

VOLVO CONSTRUCTION EQUIPMENT MATRIS REPORT

Machine model EC350E	SerialNo 310398	Operating Hours 3384	Reading Date 22/10/2019
Company name ascendum	Dealer	Report Issuer	
Contact name	Technician Boback	Primary Application Site Preparation	
Site	Workorder	Ground Condition	

MATRIS Reading, Summary / Recommendation



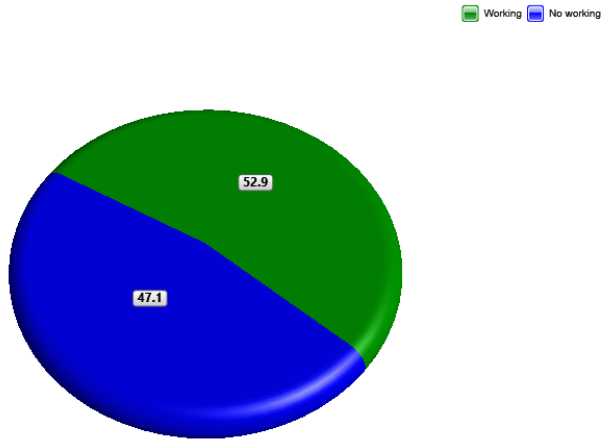
Machine model	SerialNo	Operating Hours	Reading Date
EC350E	310398	3384	22/10/2019

Main equipment	Type	Equipment
	Track chain	
	X3 piping	
	Main Attachment	
	Attachment Interface	
	Hydraulic Fluid	
	X1 Piping	
	Hose Rupture Valve on Boom	
	Hose Rupture Valve on Arm	
	X1 return filter	



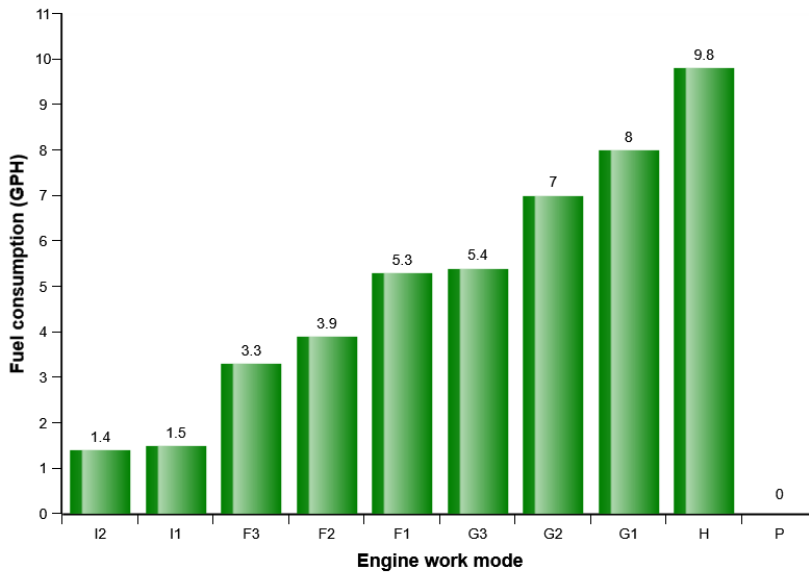
Machine model	SerialNo	Operating Hours	Reading Date
EC350E	310398	3384	22/10/2019

Machine utilization (%)



Total logged time (h) = 3384.1

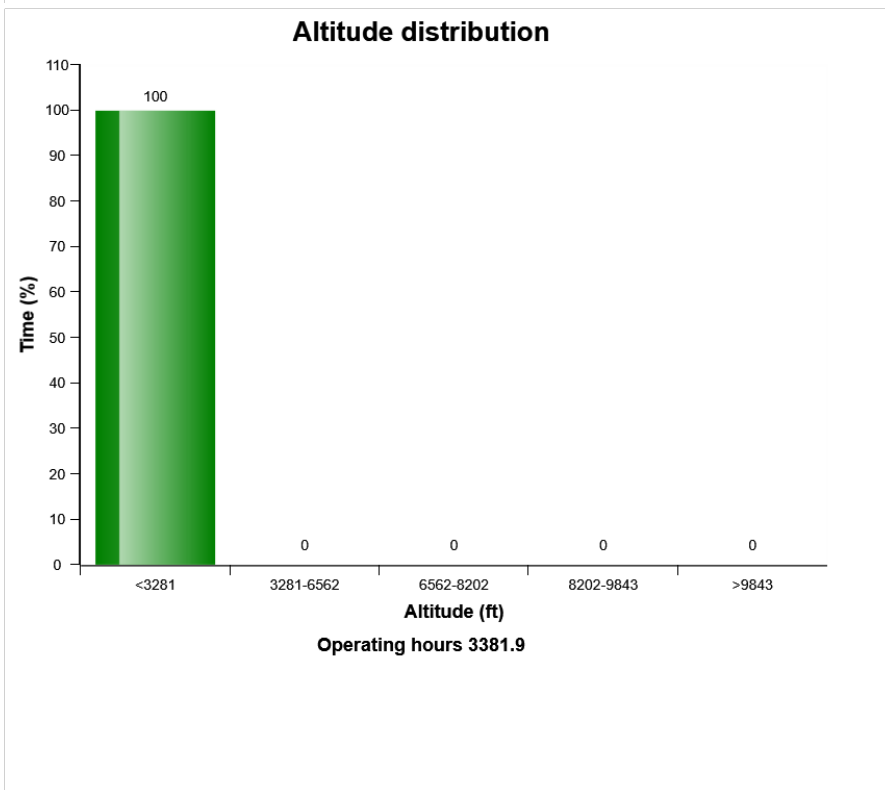
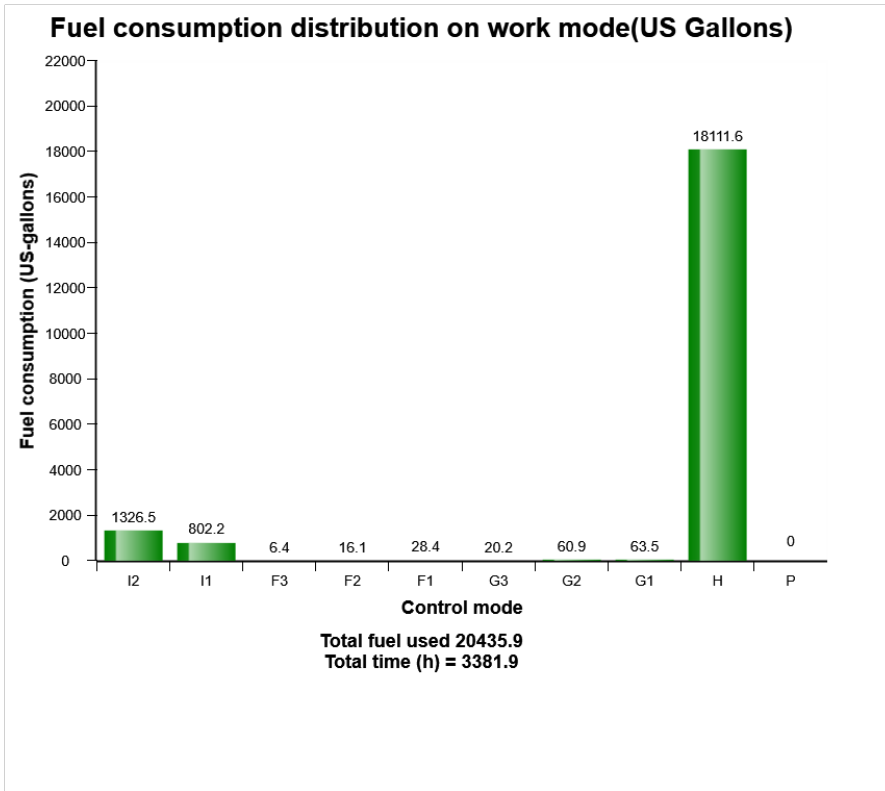
Fuel consumption distribution on work mode



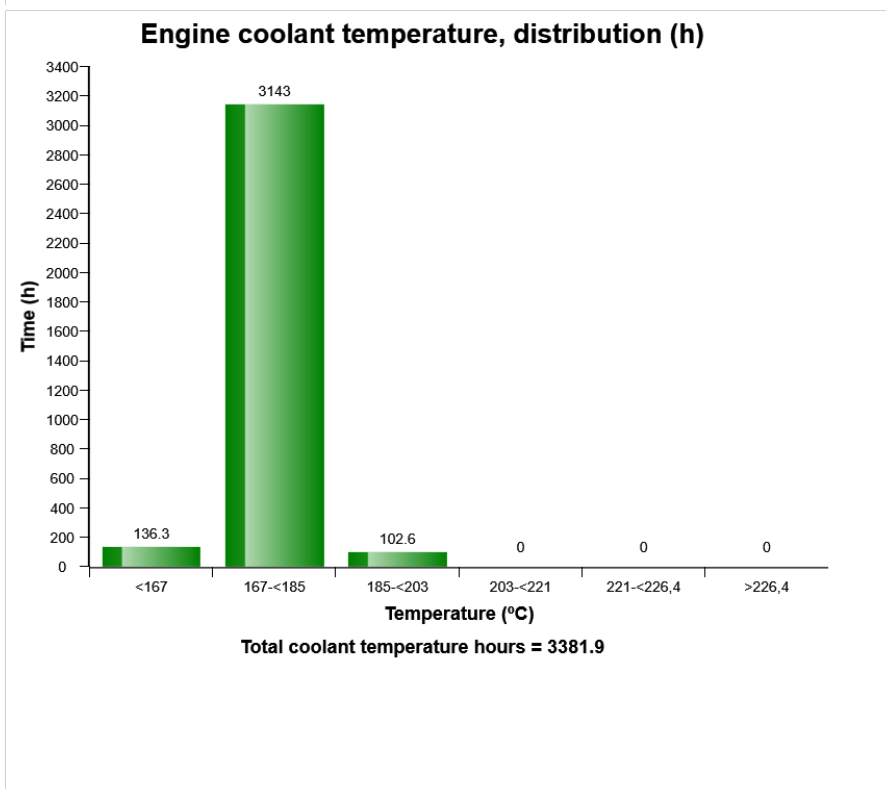
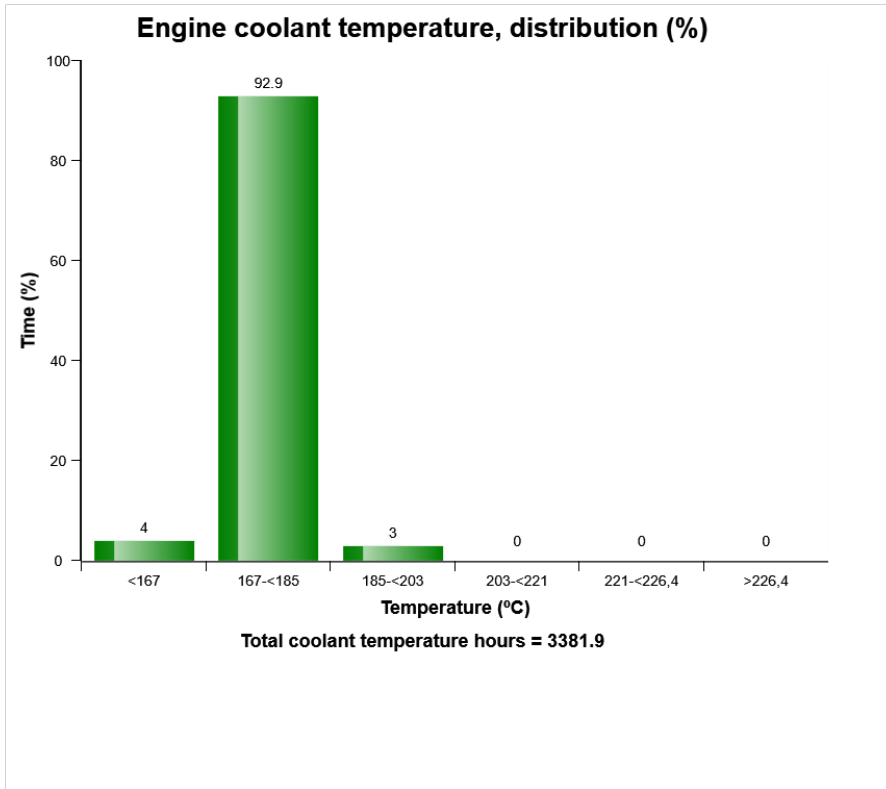
Fuel consumption (GPH) = 6.0
 Fuel used (US-Gallons) = 20435.9



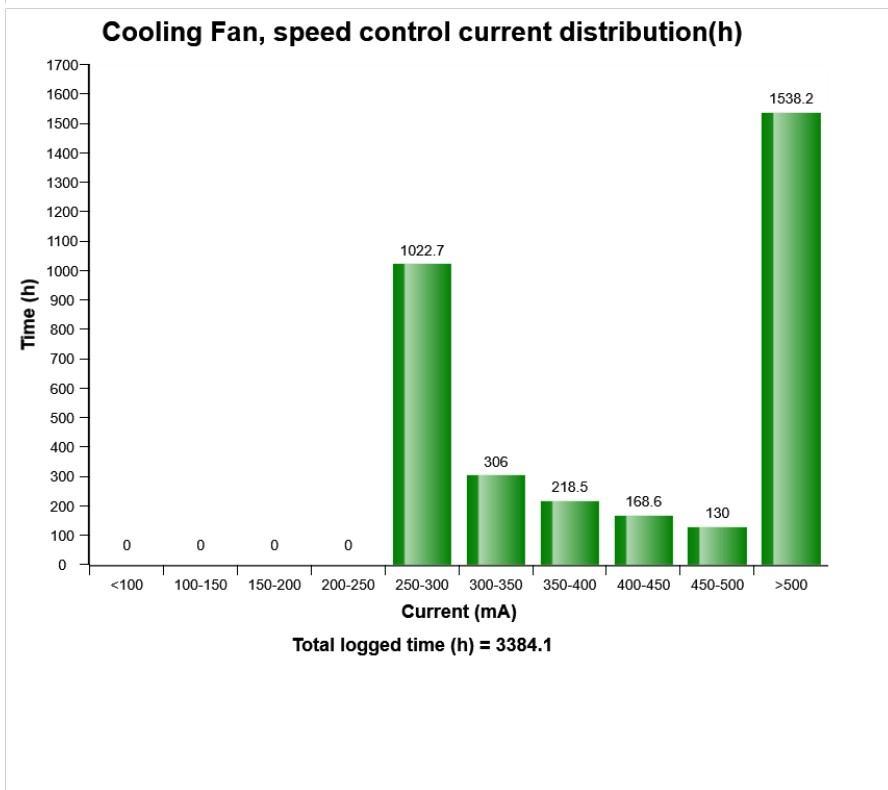
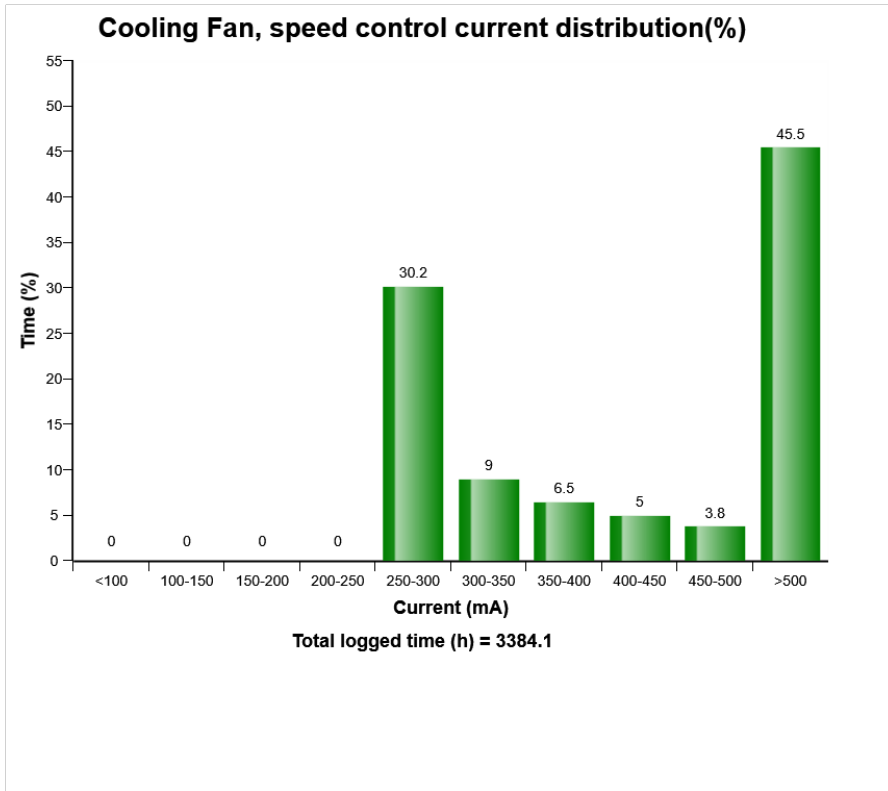
Machine model	SerialNo	Operating Hours	Reading Date
EC350E	310398	3384	22/10/2019



Machine model	SerialNo	Operating Hours	Reading Date
EC350E	310398	3384	22/10/2019

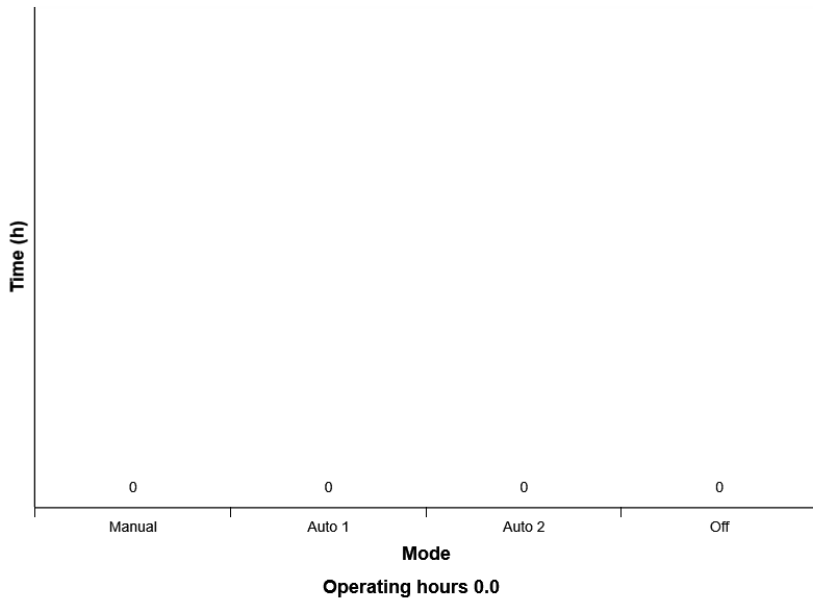


Machine model	SerialNo	Operating Hours	Reading Date
EC350E	310398	3384	22/10/2019

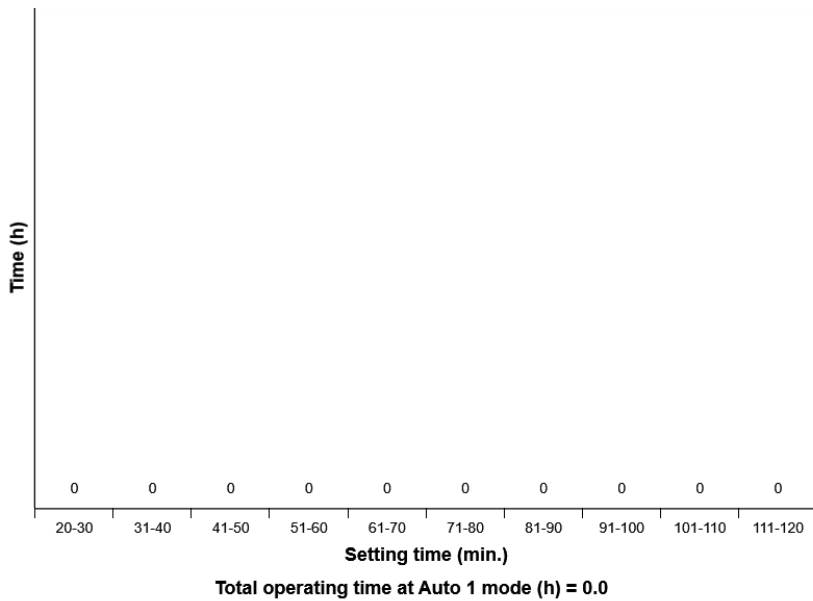


Machine model	SerialNo	Operating Hours	Reading Date
EC350E	310398	3384	22/10/2019

Cooling fan, Mode distribution (h)

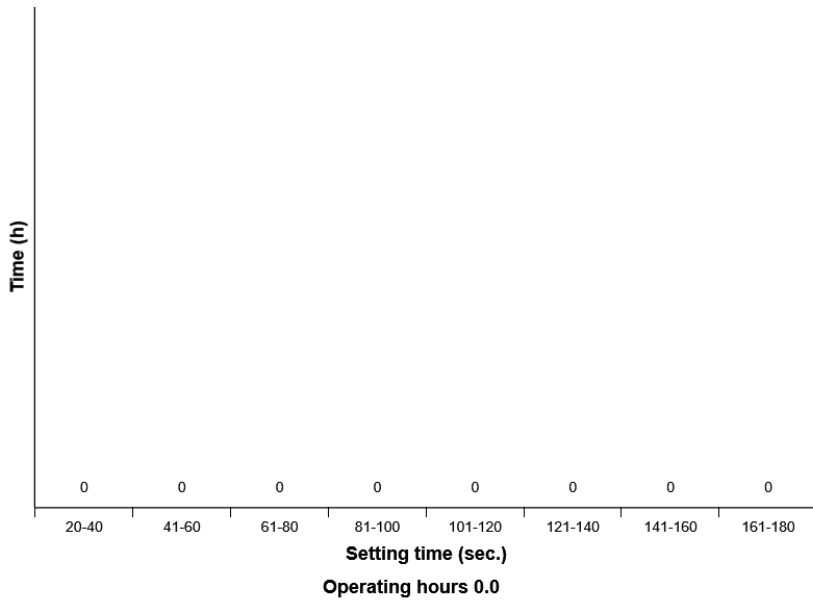


Reverisble fan, Time setting distribution (h) at Auto 1 mode

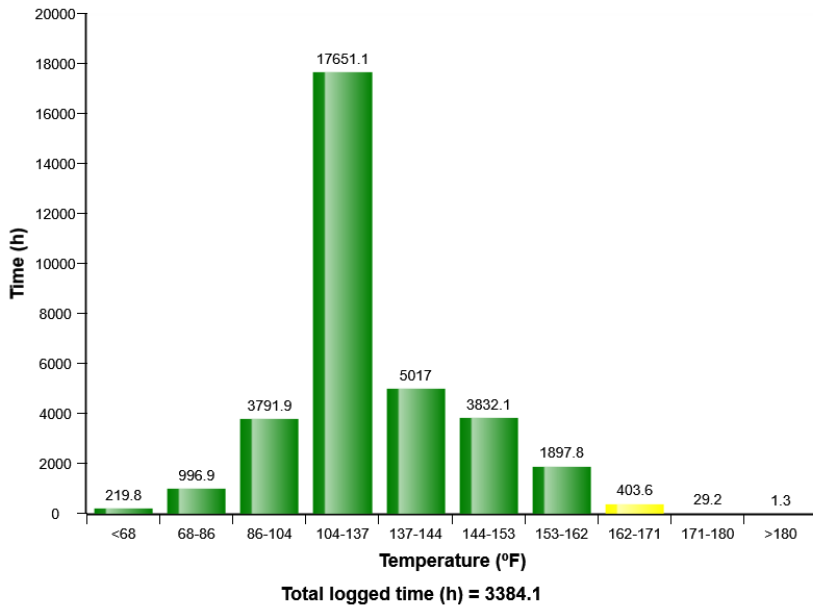


Machine model	SerialNo	Operating Hours	Reading Date
EC350E	310398	3384	22/10/2019

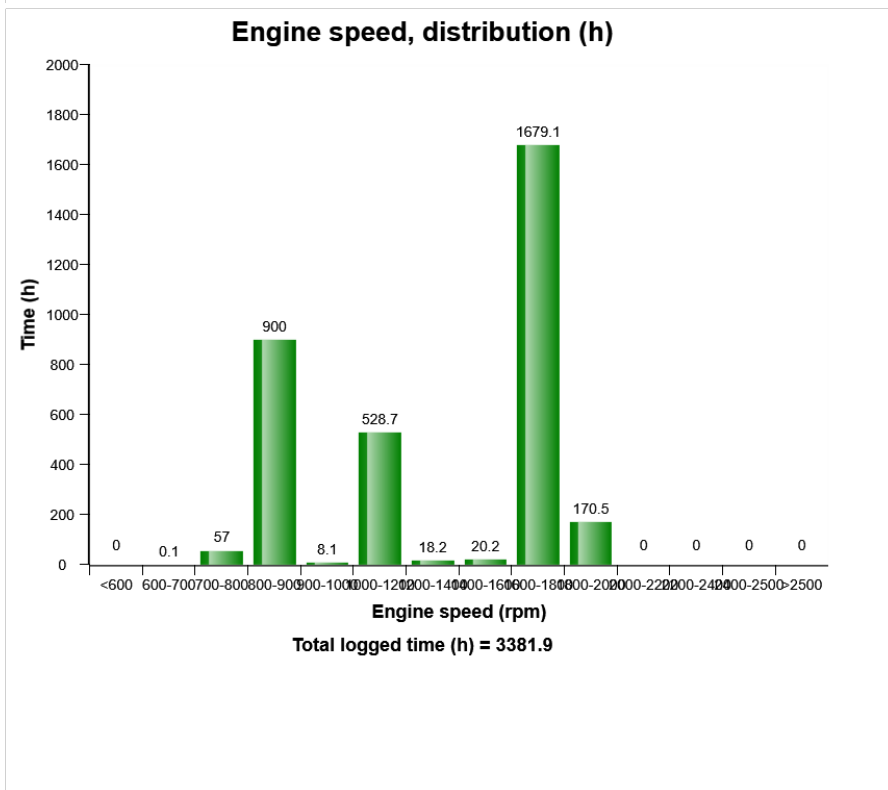
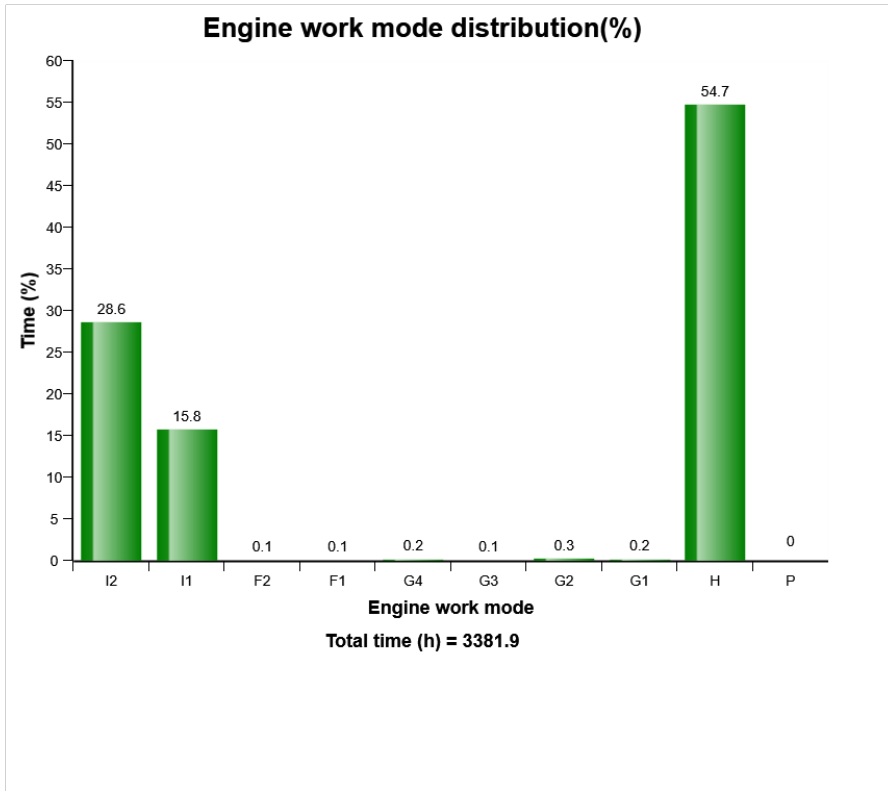
Reversible fan, Time setting distribution (h) at Manual mode



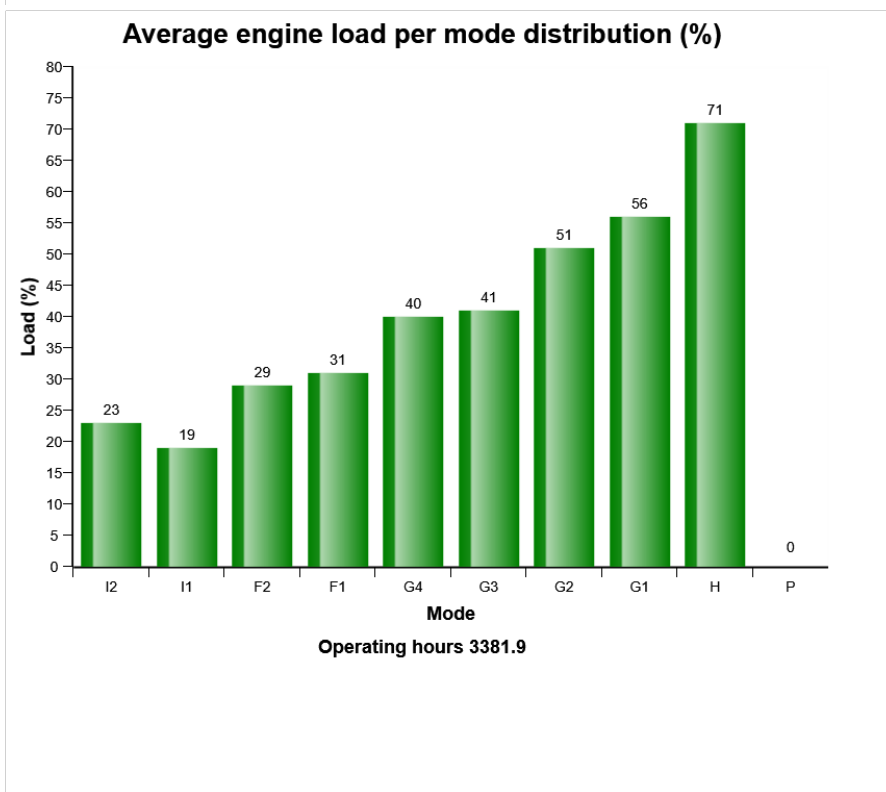
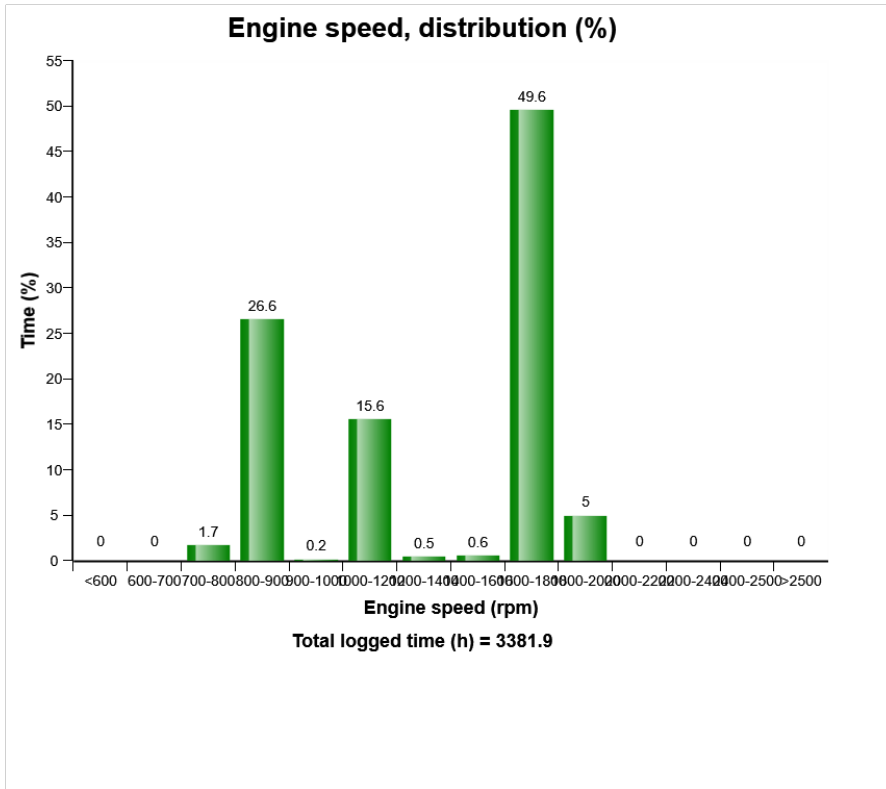
Engine boost air temperature distribution (h)



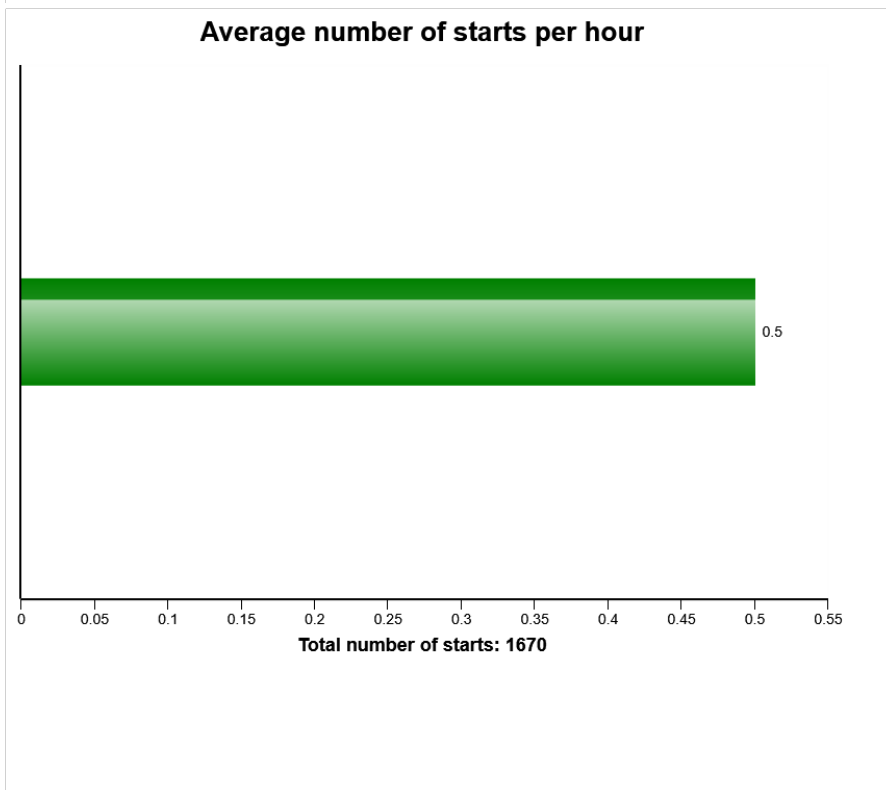
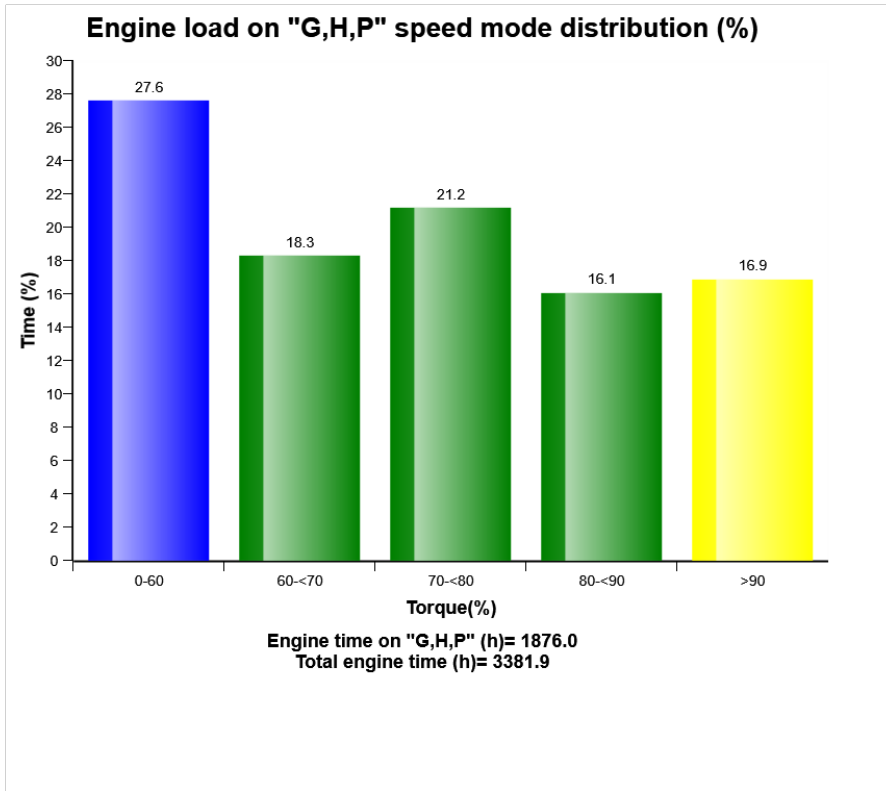
Machine model	SerialNo	Operating Hours	Reading Date
EC350E	310398	3384	22/10/2019



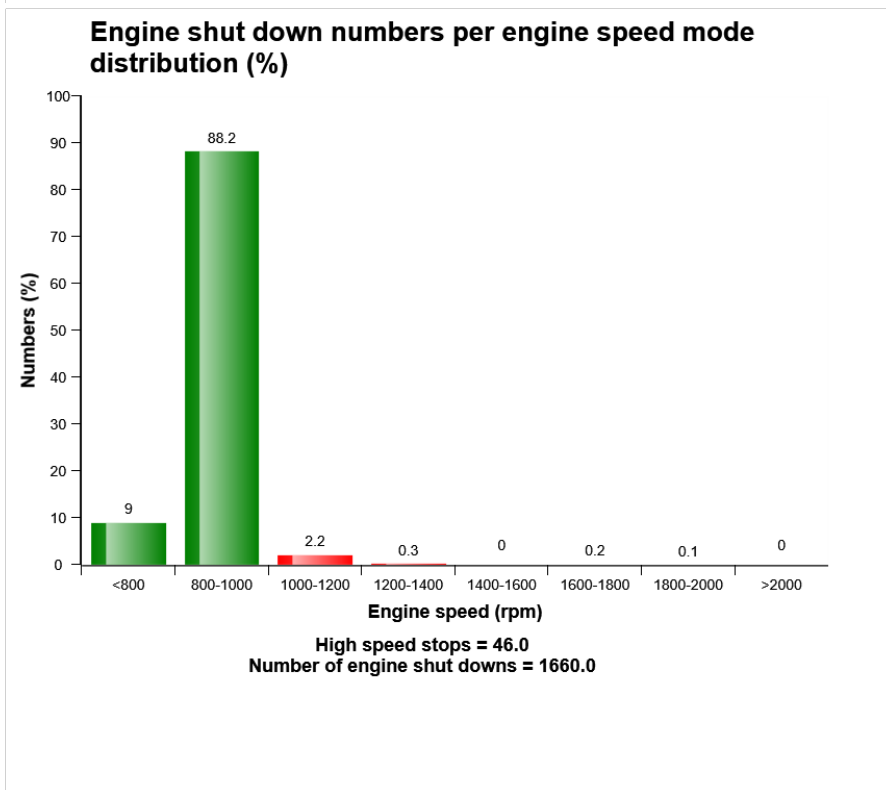
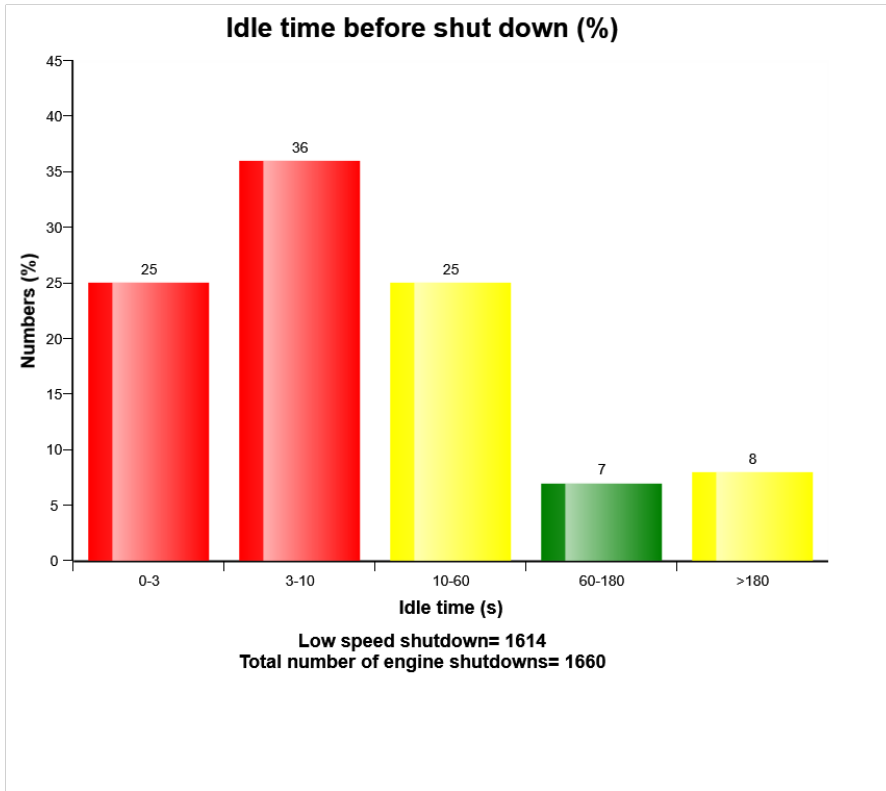
Machine model	SerialNo	Operating Hours	Reading Date
EC350E	310398	3384	22/10/2019



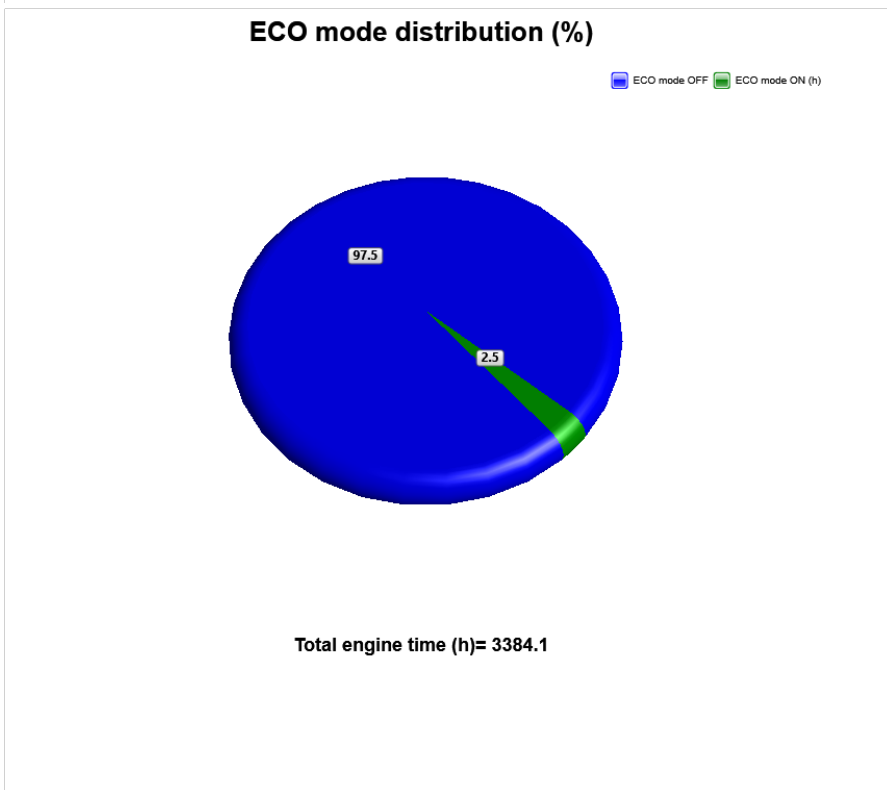
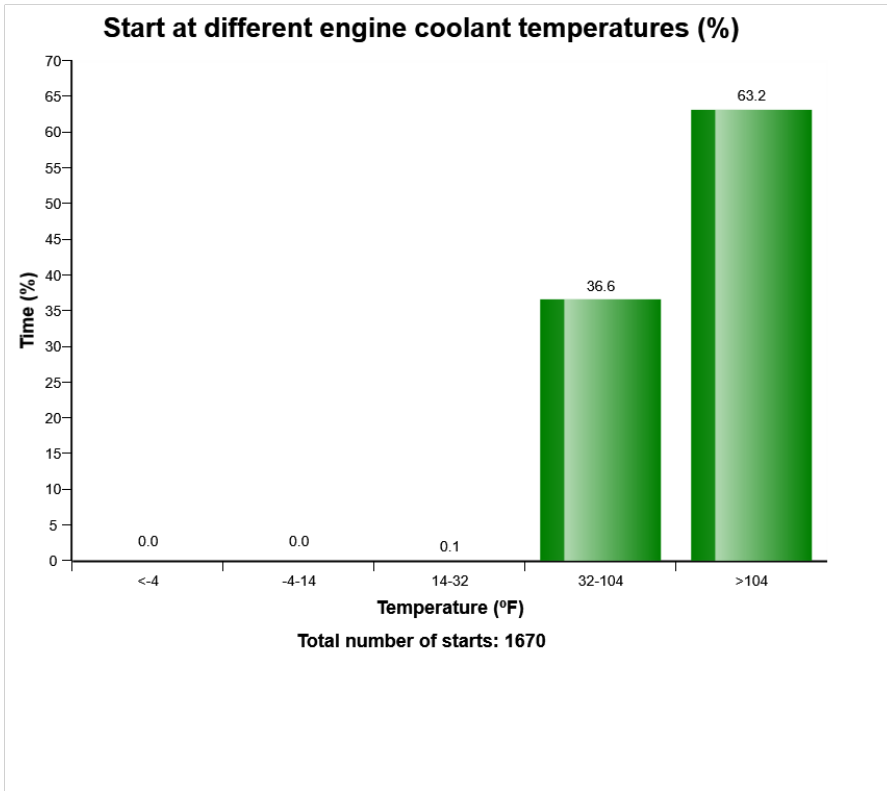
Machine model	SerialNo	Operating Hours	Reading Date
EC350E	310398	3384	22/10/2019



Machine model	SerialNo	Operating Hours	Reading Date
EC350E	310398	3384	22/10/2019



Machine model	SerialNo	Operating Hours	Reading Date
EC350E	310398	3384	22/10/2019



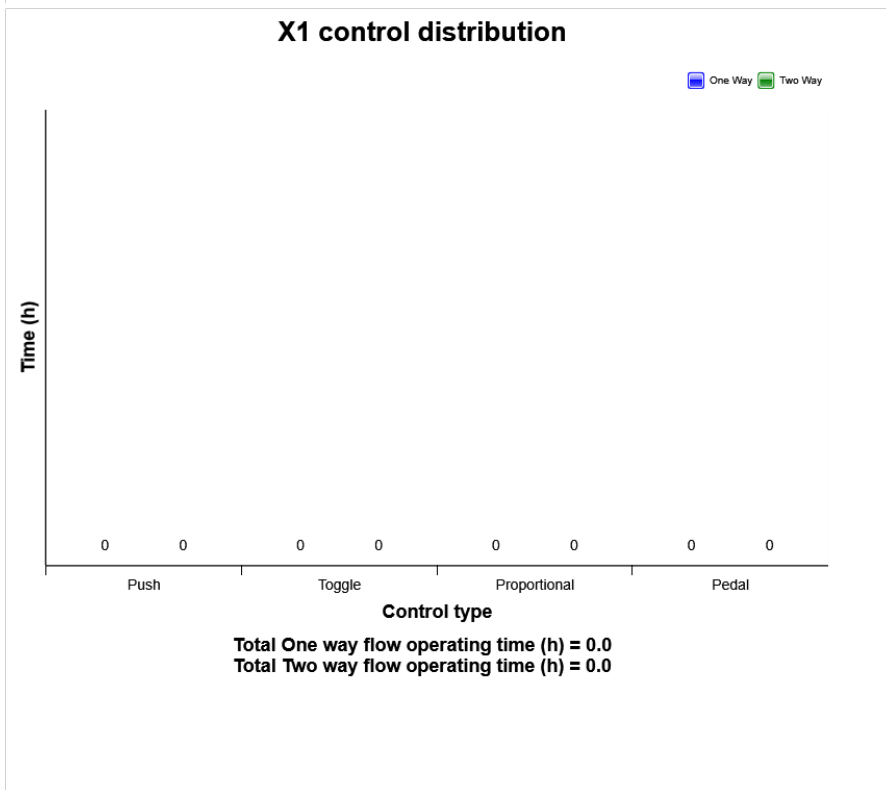
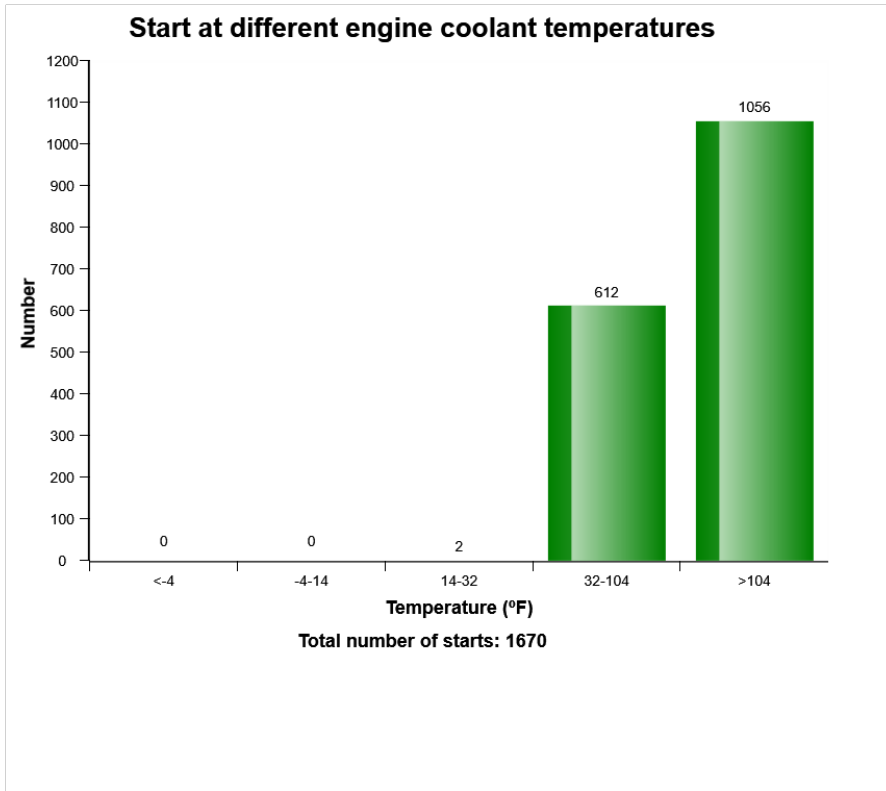
Machine model	SerialNo	Operating Hours	Reading Date
EC350E	310398	3384	22/10/2019

Fuel Filter Clogging
Total number Fuel filter clogging = 43

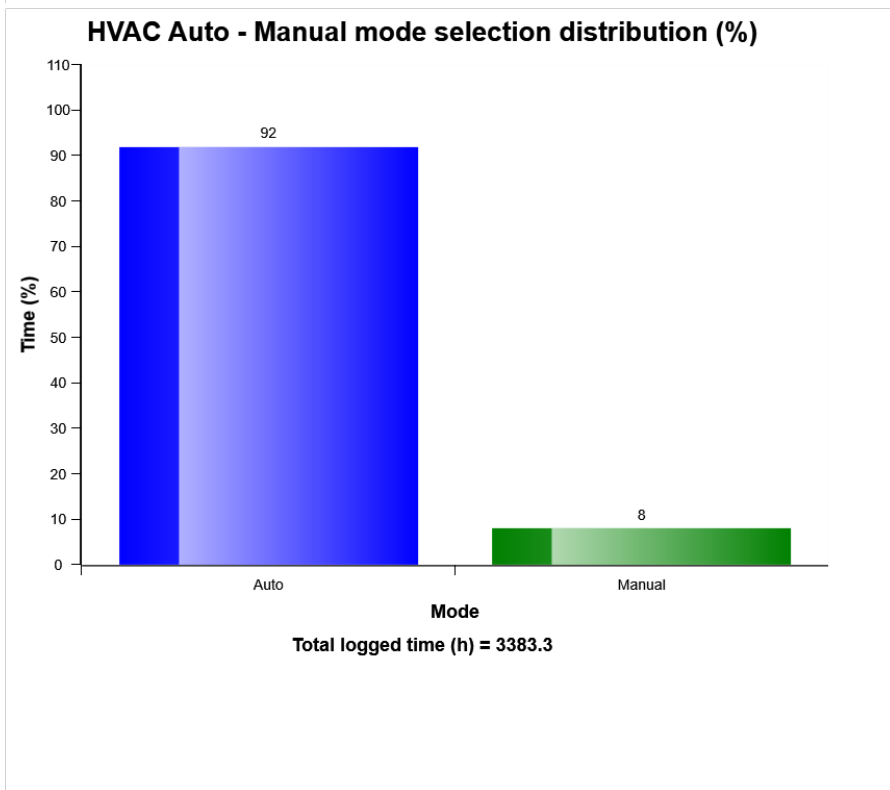
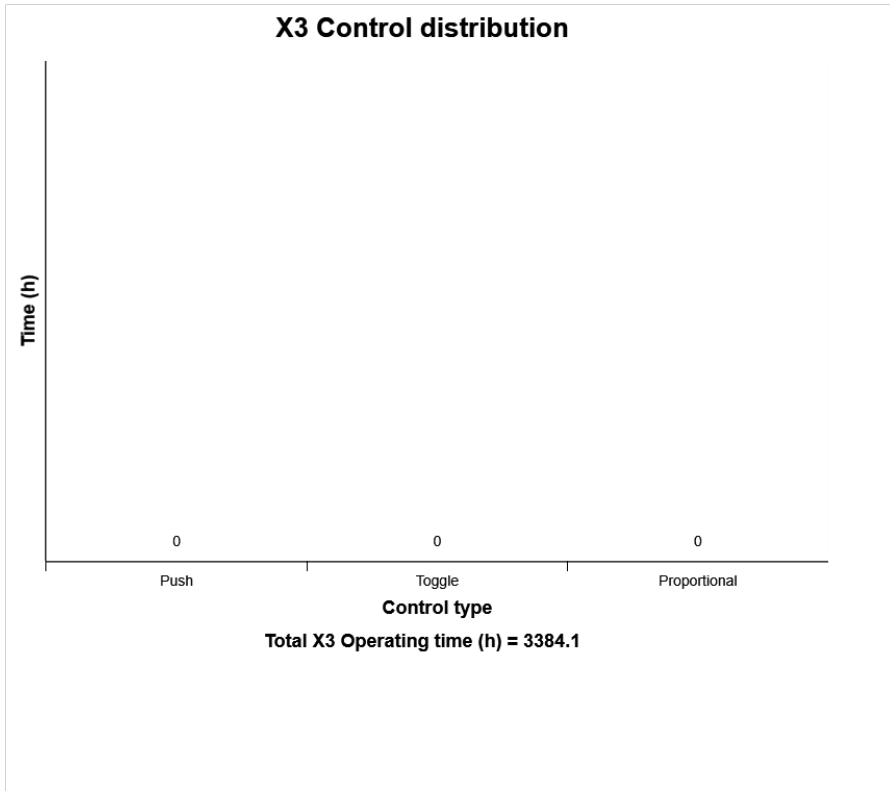
Op hours	Year	Month	Day	Hour	Minute	Duration (minutes)
* 2984	2019	6	19	9	57	1
* 2985	2019	6	19	10	22	0
* 3347	2019	8	28	6	55	1
* 2961	2019	6	15	11	34	1
* 2965	2019	6	17	7	26	0
* 2970	2019	6	17	14	15	1
* 2970	2019	6	17	14	18	3
* 2970	2019	6	17	14	27	3
* 2973	2019	6	18	7	4	1
* 2973	2019	6	18	7	5	1
* 2977	2019	6	18	10	48	3
* 2977	2019	6	18	10	59	2
* 2977	2019	6	18	11	11	4
* 2977	2019	6	18	11	28	3
* 2982	2019	6	19	7	43	5
* 2983	2019	6	19	8	27	1
* 2983	2019	6	19	8	29	1
* 2983	2019	6	19	8	42	1
* 2983	2019	6	19	9	0	1
* 2984	2019	6	19	9	52	1



Machine model	SerialNo	Operating Hours	Reading Date
EC350E	310398	3384	22/10/2019

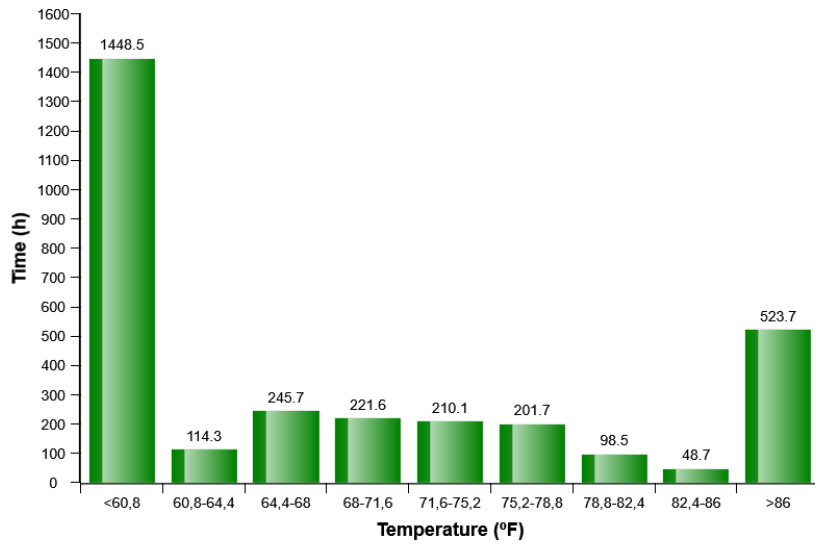


Machine model	SerialNo	Operating Hours	Reading Date
EC350E	310398	3384	22/10/2019

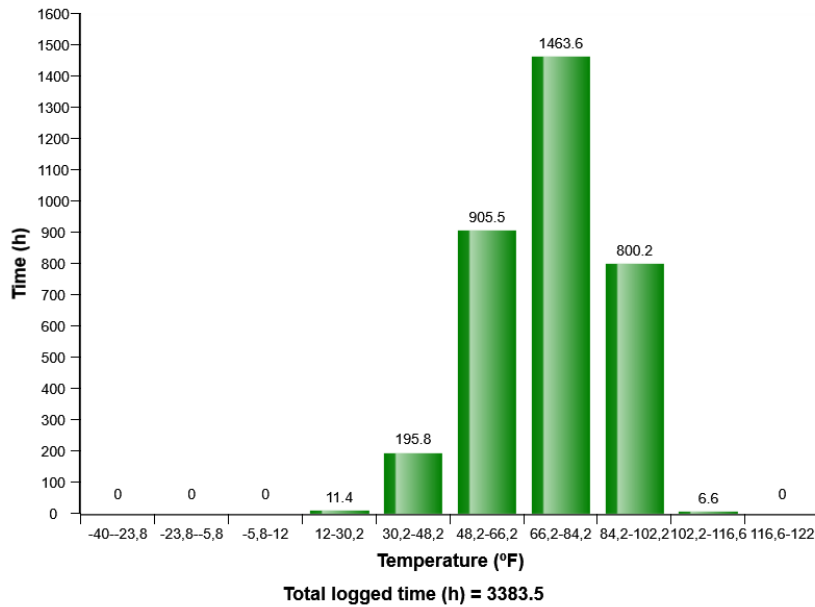


Machine model	SerialNo	Operating Hours	Reading Date
EC350E	310398	3384	22/10/2019

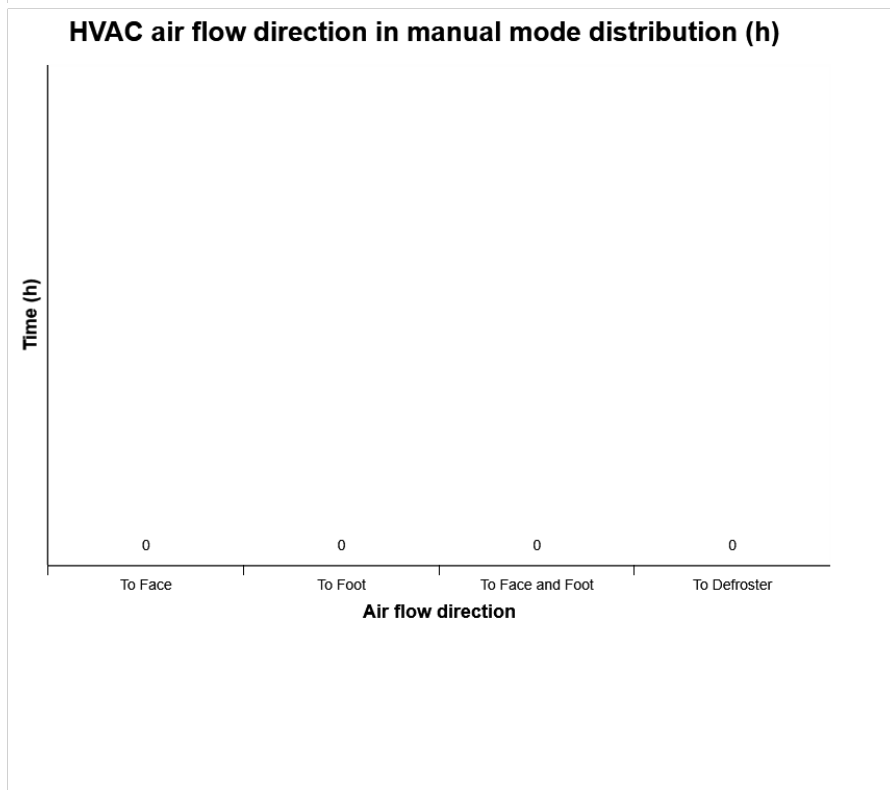
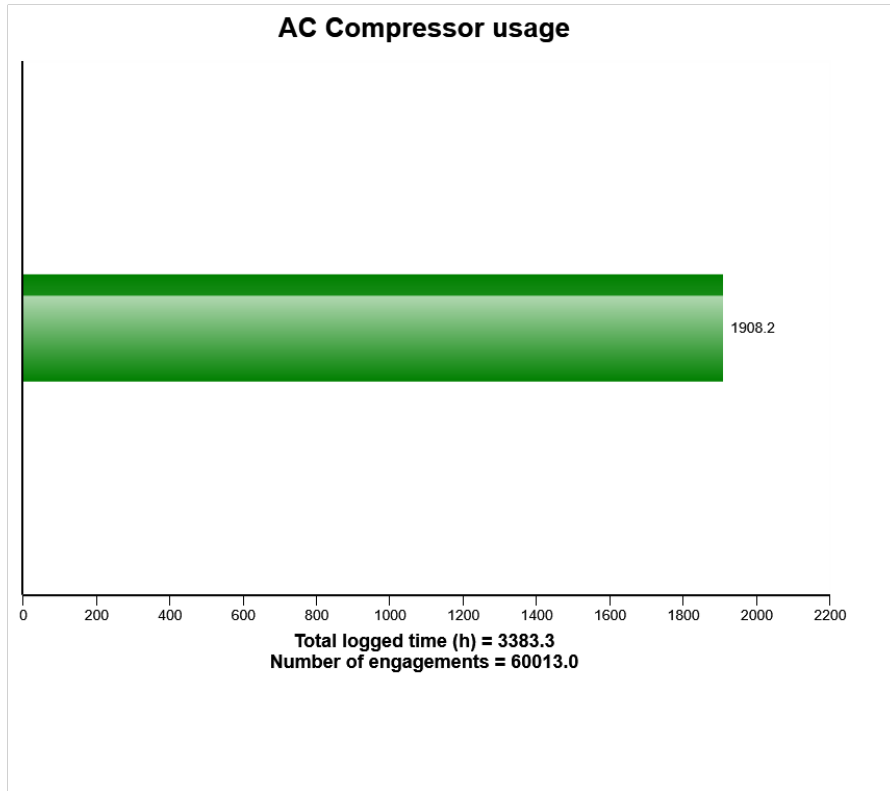
HVAC air temperature setting in auto control mode distribution (h)



Machine ambient temperature distribution (h)

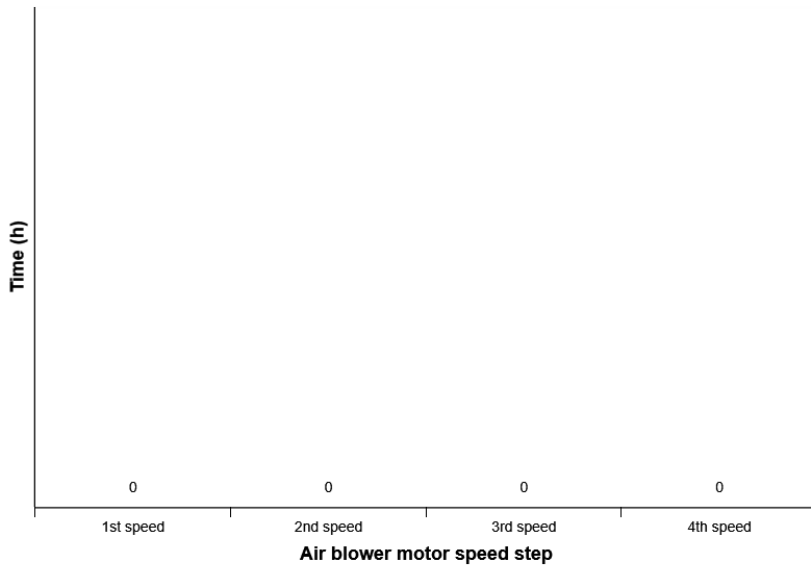


Machine model	SerialNo	Operating Hours	Reading Date
EC350E	310398	3384	22/10/2019

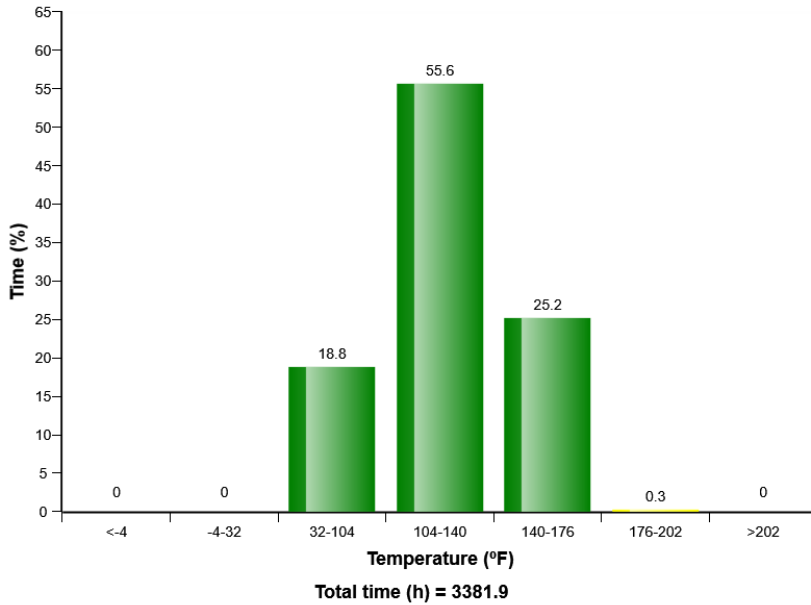


Machine model	SerialNo	Operating Hours	Reading Date
EC350E	310398	3384	22/10/2019

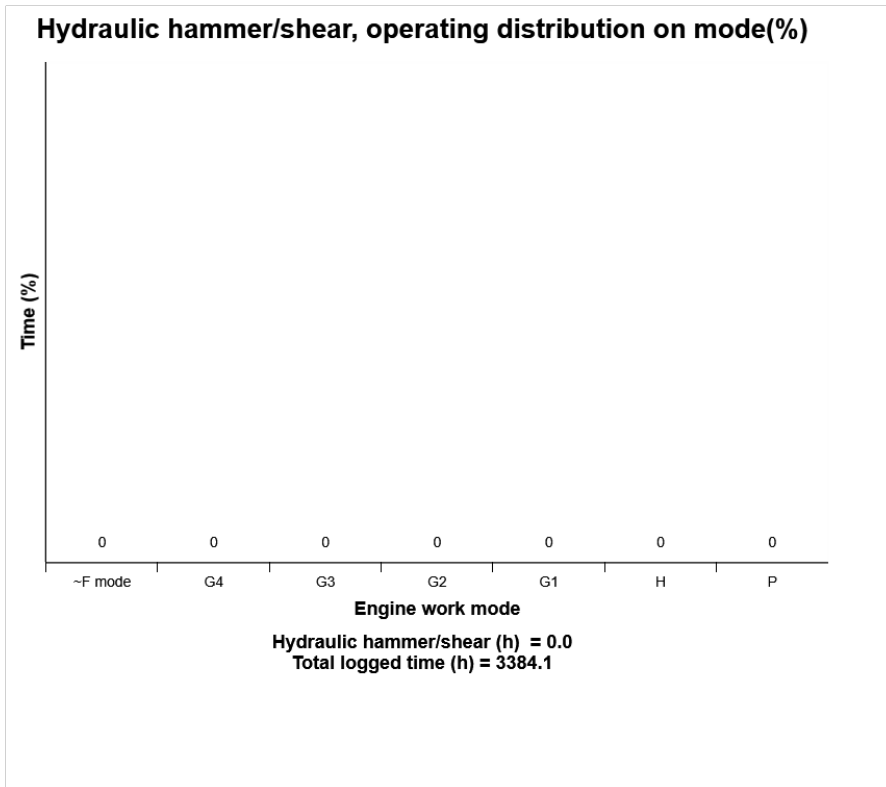
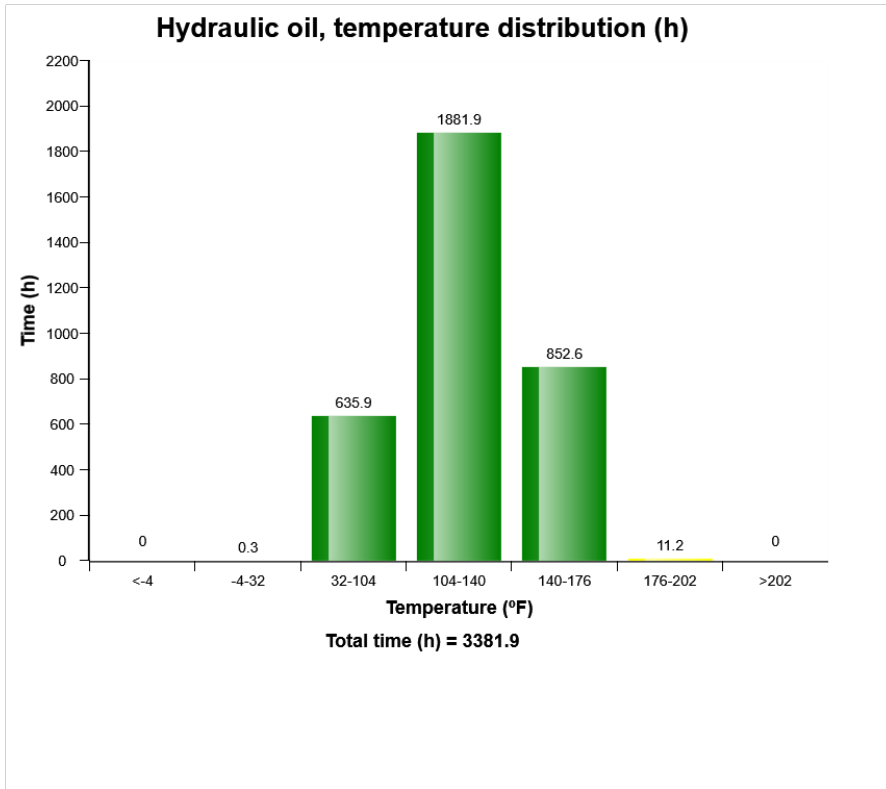
HVAC air blower motor speed in manual mode distribution (h)



Hydraulic oil, temperature distribution (%)

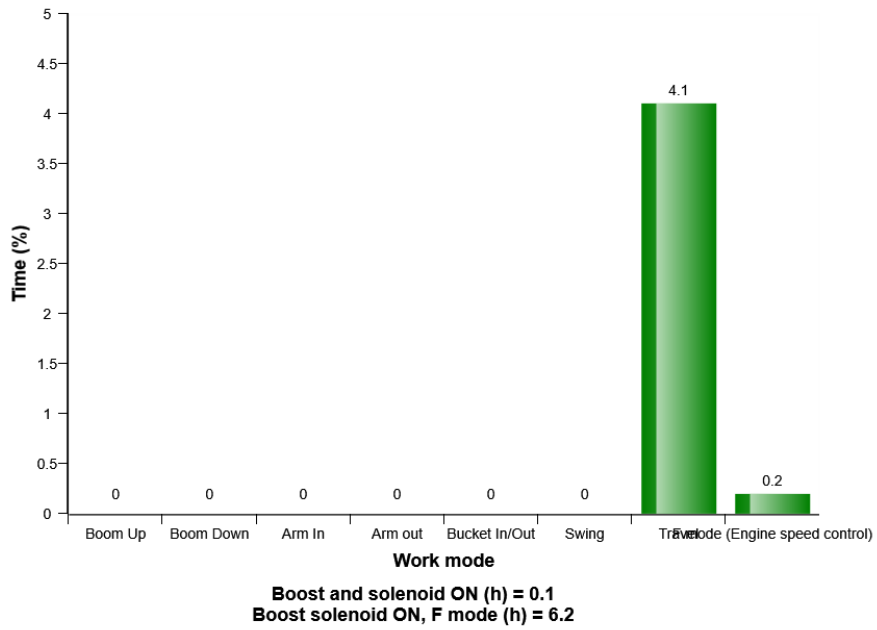


Machine model	SerialNo	Operating Hours	Reading Date
EC350E	310398	3384	22/10/2019

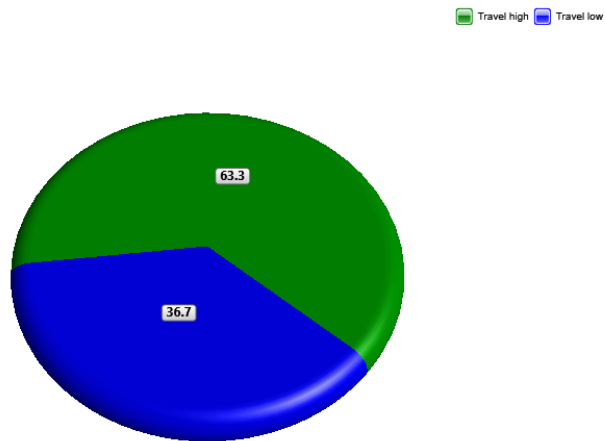


Machine model	SerialNo	Operating Hours	Reading Date
EC350E	310398	3384	22/10/2019

Hydraulic Power boosted working operation distribution (%)



Travel speed, high/low (%)

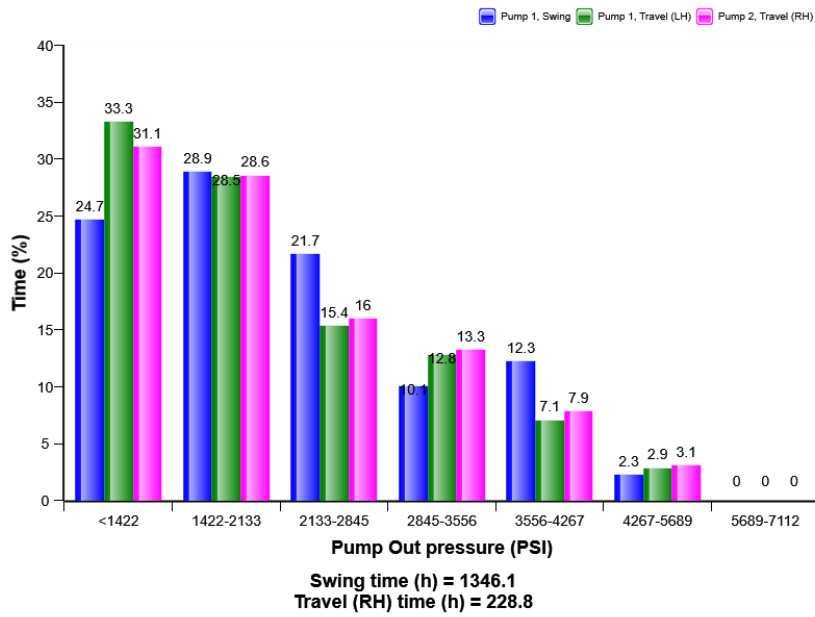


Total travel time (h) = 240.1
Travel time / Operating hours (%) = 7.1

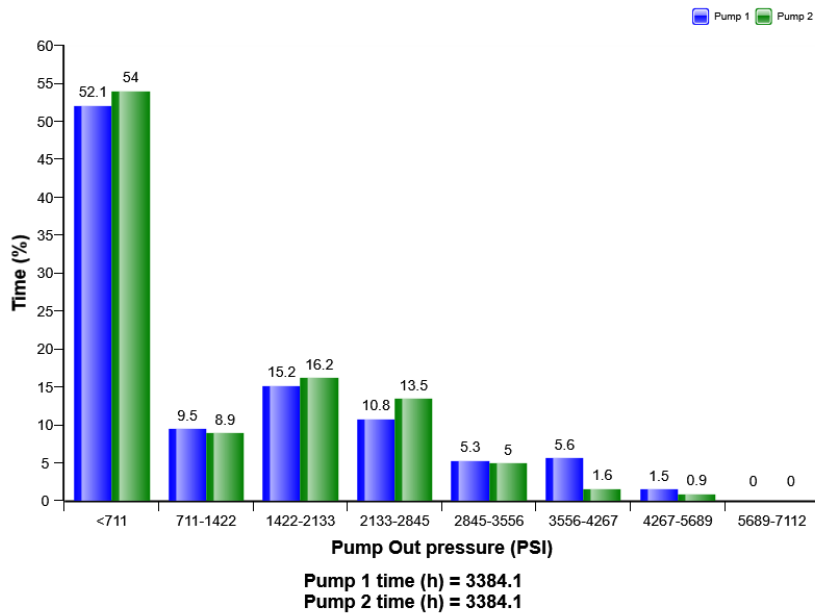


Machine model	SerialNo	Operating Hours	Reading Date
EC350E	310398	3384	22/10/2019

Pump pressure on travel and swing distribution (%)

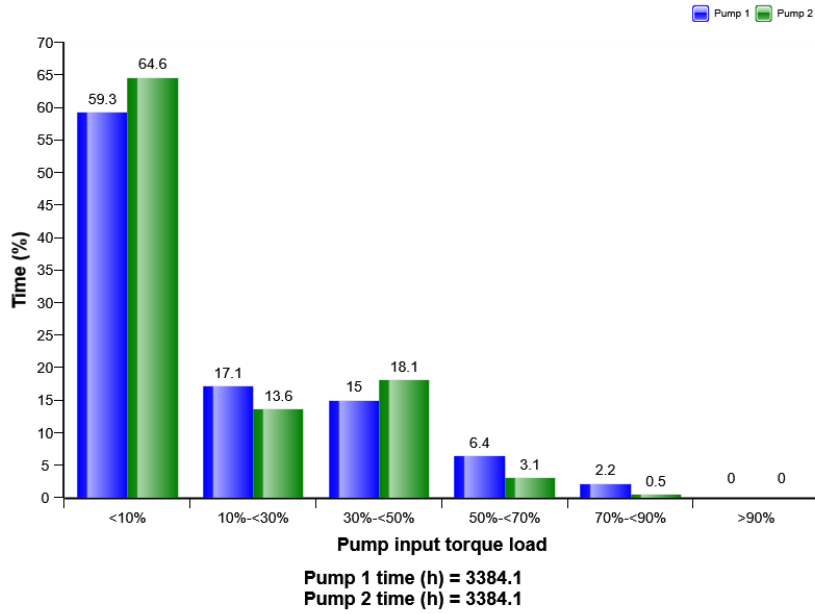


Pump pressure overall distribution (%)

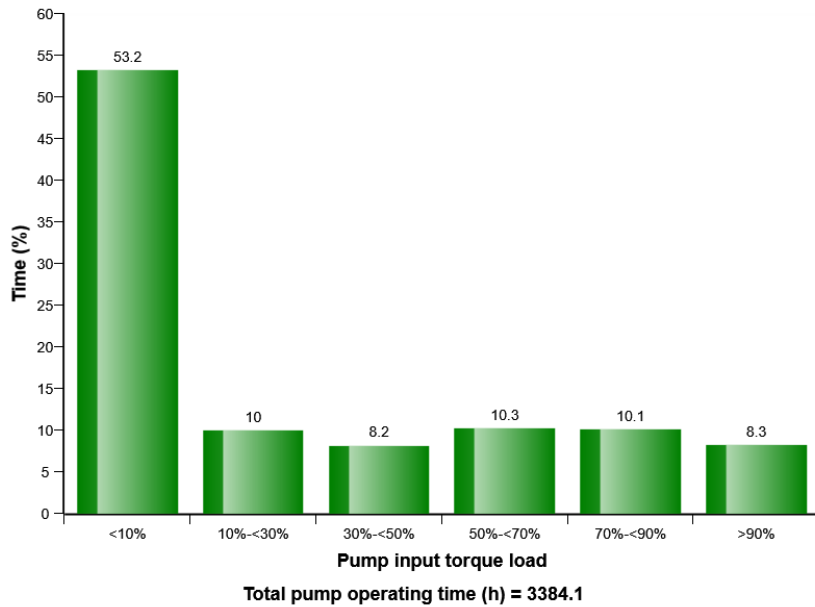


Machine model	SerialNo	Operating Hours	Reading Date
EC350E	310398	3384	22/10/2019

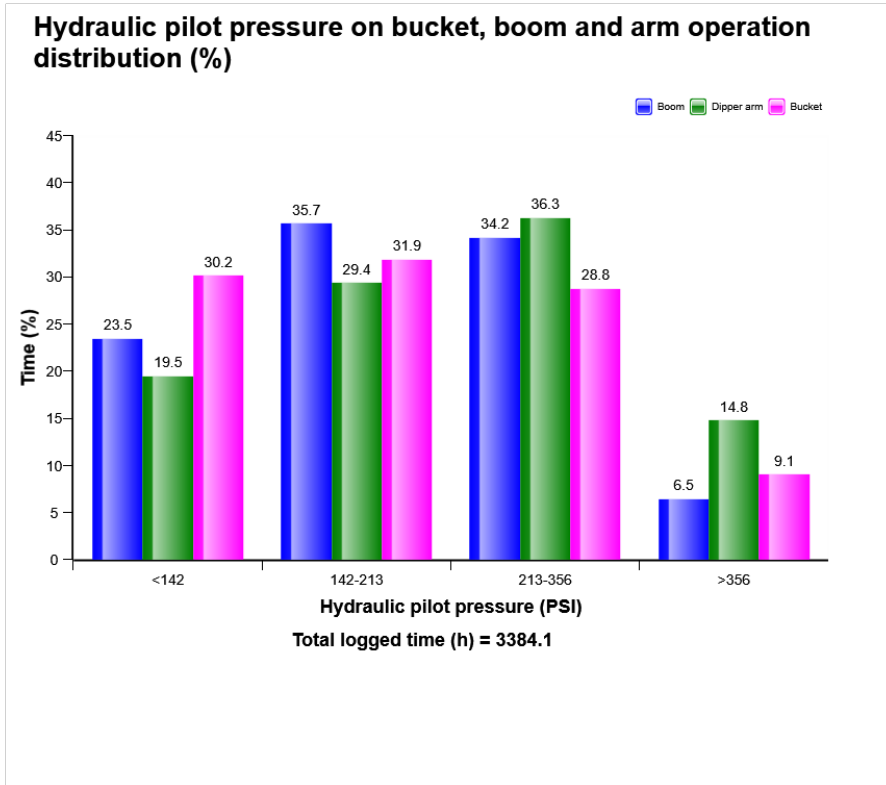
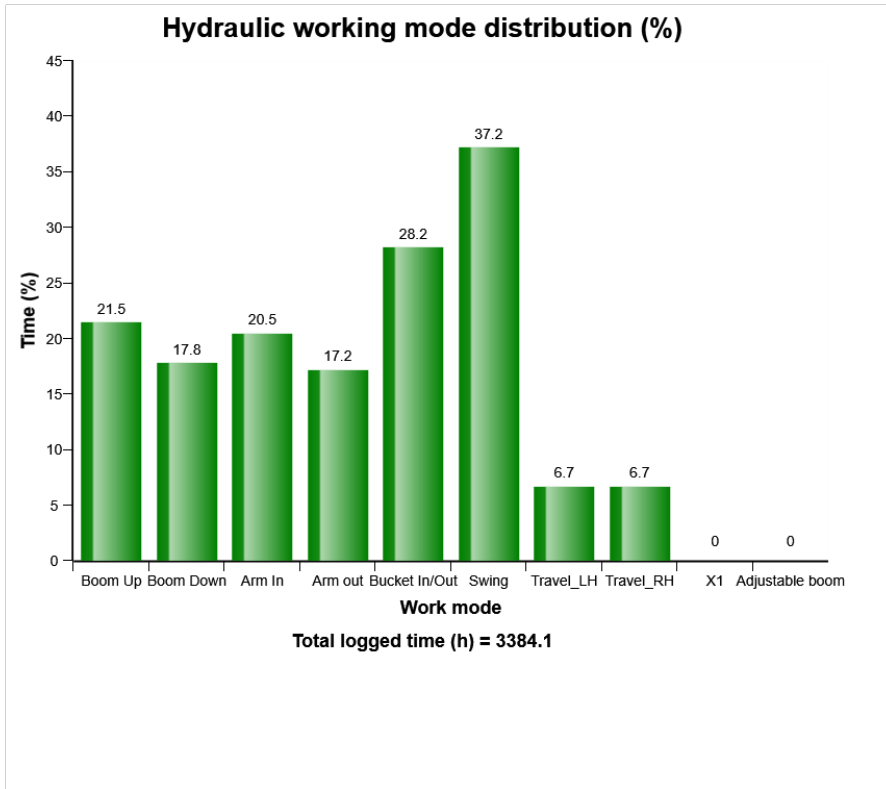
Pump input torque overall distribution (%)



Pump torque load for 2 pump interaction distribution (%)

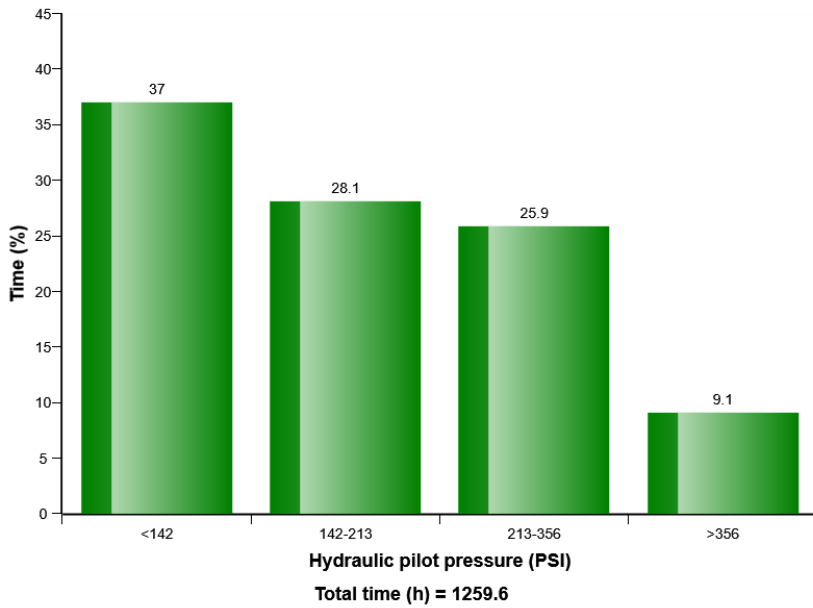


Machine model	SerialNo	Operating Hours	Reading Date
EC350E	310398	3384	22/10/2019

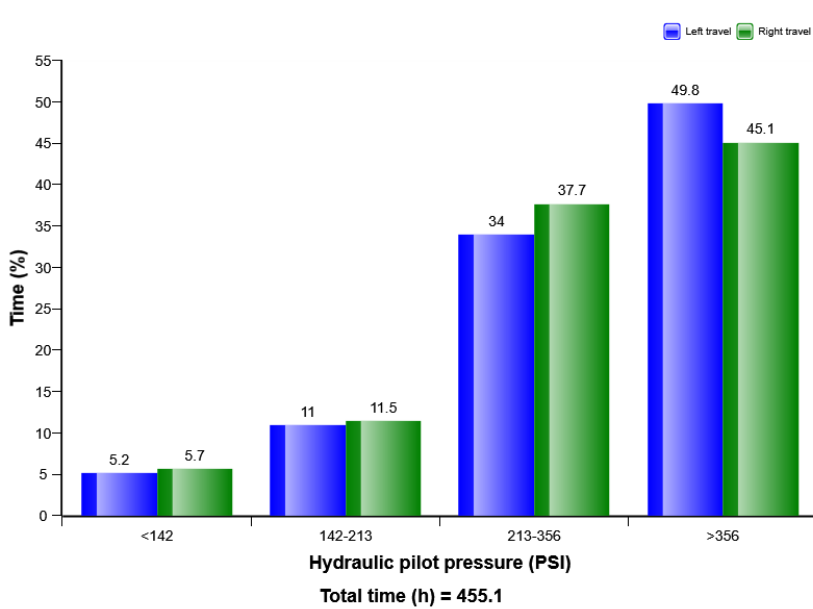


Machine model	SerialNo	Operating Hours	Reading Date
EC350E	310398	3384	22/10/2019

Hydraulic pilot pressure on swing operation distribution (%)

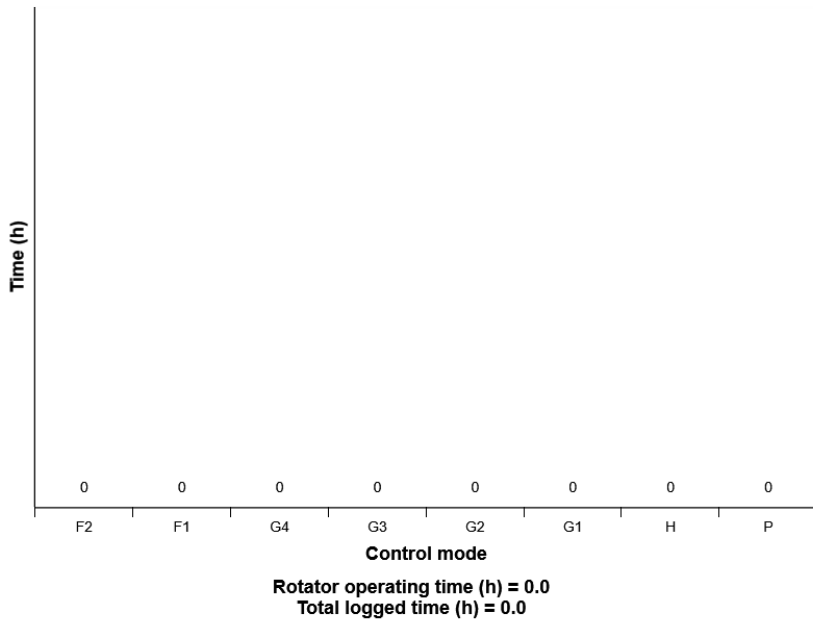


Hydraulic pilot pressure on travel operation distribution (%)



Machine model	SerialNo	Operating Hours	Reading Date
EC350E	310398	3384	22/10/2019

Rotator operation on engine speed mode distribution (h)



X1 hydraulic oil flow control distribution

