

VOLVO CONSTRUCTION EQUIPMENT MATRIS REPORT

Machine model L110H	SerialNo 631307	Operating Hours 6968.2	Reading Date 16/10/2019
Company name Ascendum Machinery	Dealer	Report Issuer	
Contact name	Technician Brandon Hallowell	Primary Application Lose VirginBank (e.g. sand,	
Site	Workorder	Ground Condition	

MATRIS Reading, Summary / Recommendation



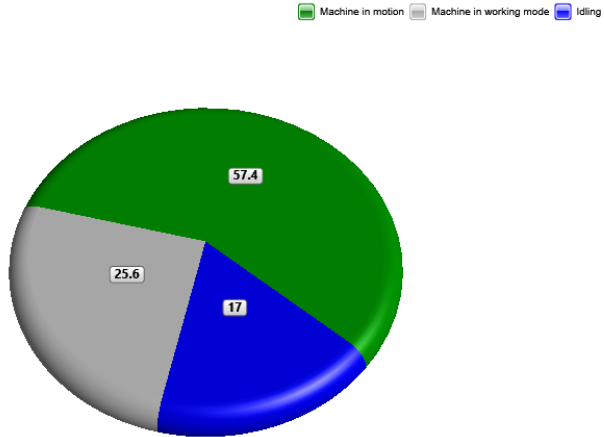
Machine model	SerialNo	Operating Hours	Reading Date
L110H	631307	6968.2	16/10/2019

Main equipment	Type	Equipment
	Tyre size/class	
	Main Attachment	
	Extra Counterweight	
	Ballast	
	Chains	
	Boom Suspension System	
	Attachment Interface	
	Volume m3 (yd3) / Area m2 (ft2)	
	Attachment make	



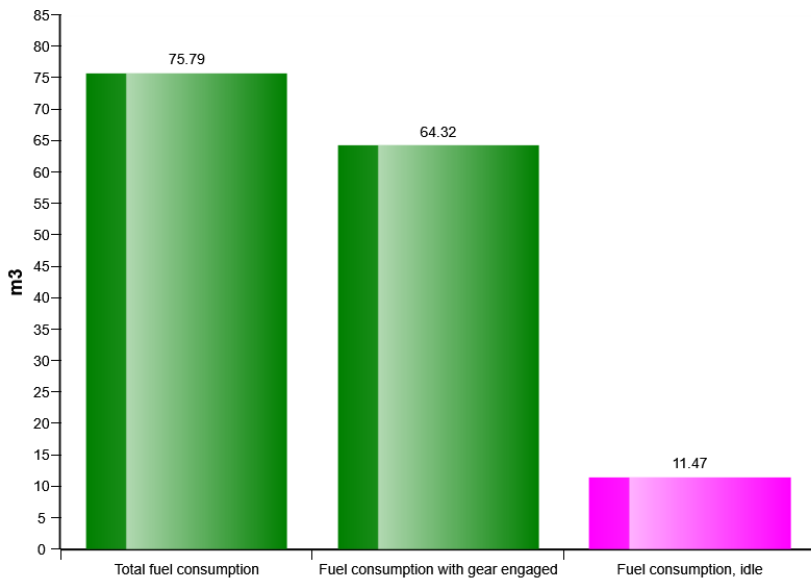
Machine model	SerialNo	Operating Hours	Reading Date
L110H	631307	6968.2	16/10/2019

Machine utilization (%)

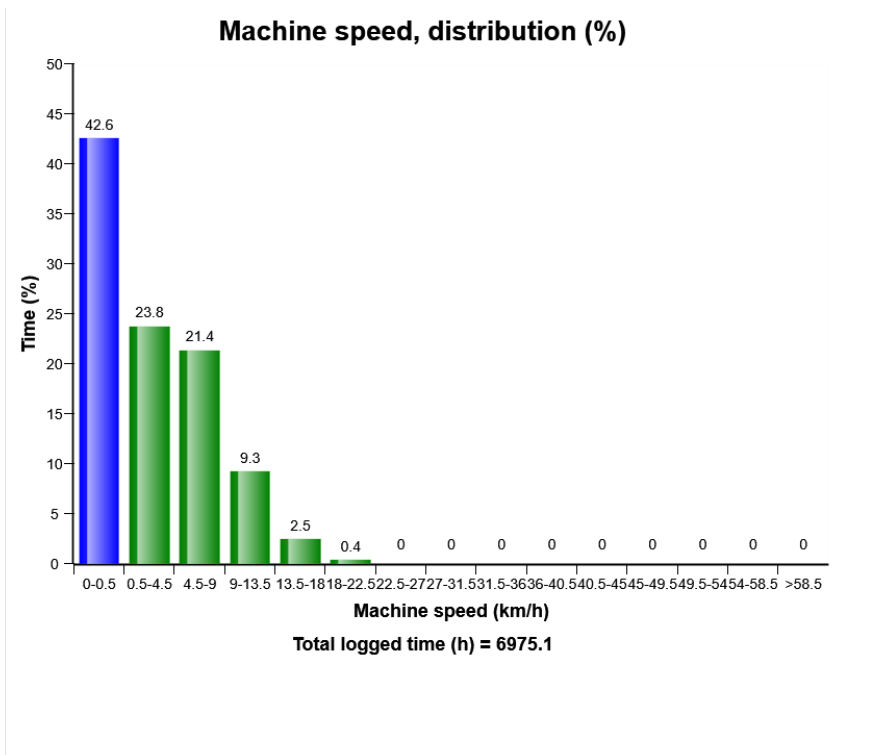
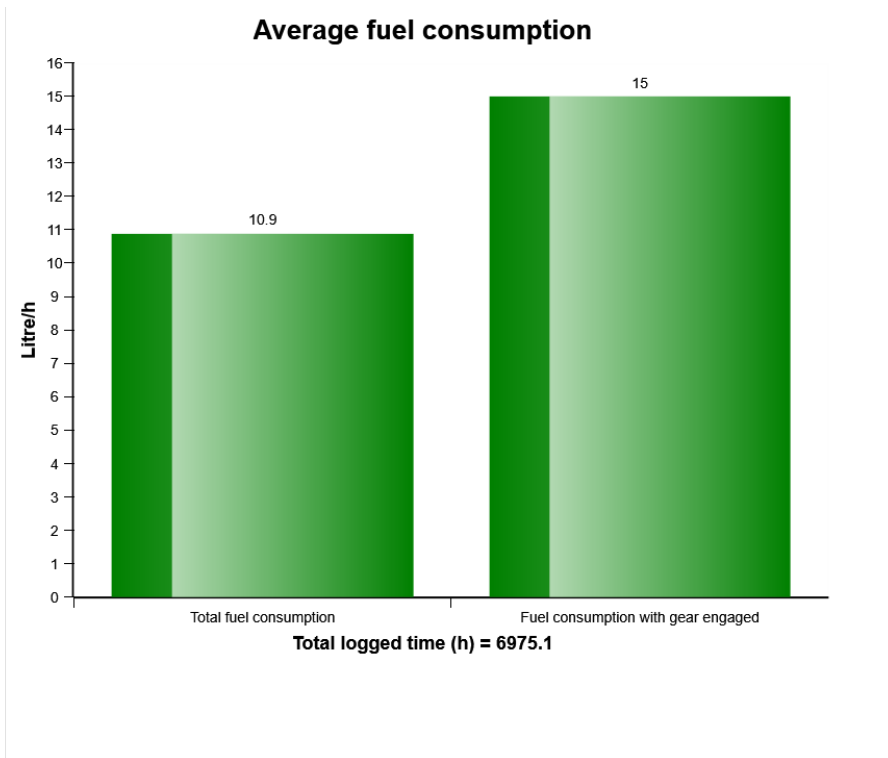


Total time (h) = 6975.1

Fuel consumption

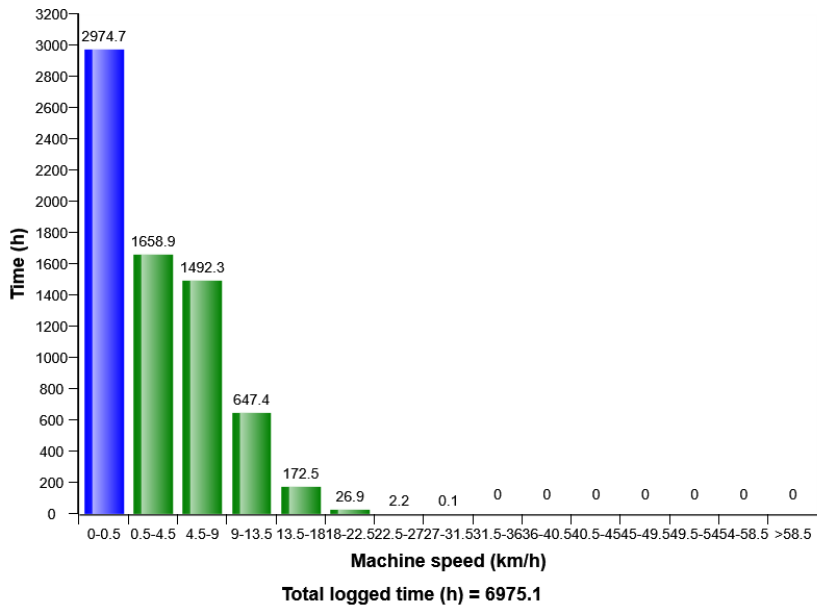


Machine model	SerialNo	Operating Hours	Reading Date
L110H	631307	6968.2	16/10/2019

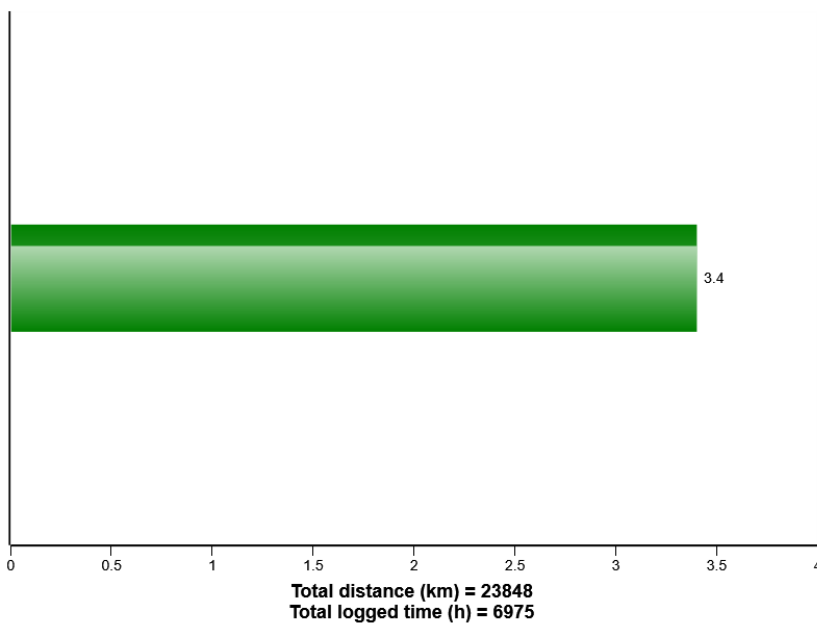


Machine model	SerialNo	Operating Hours	Reading Date
L110H	631307	6968.2	16/10/2019

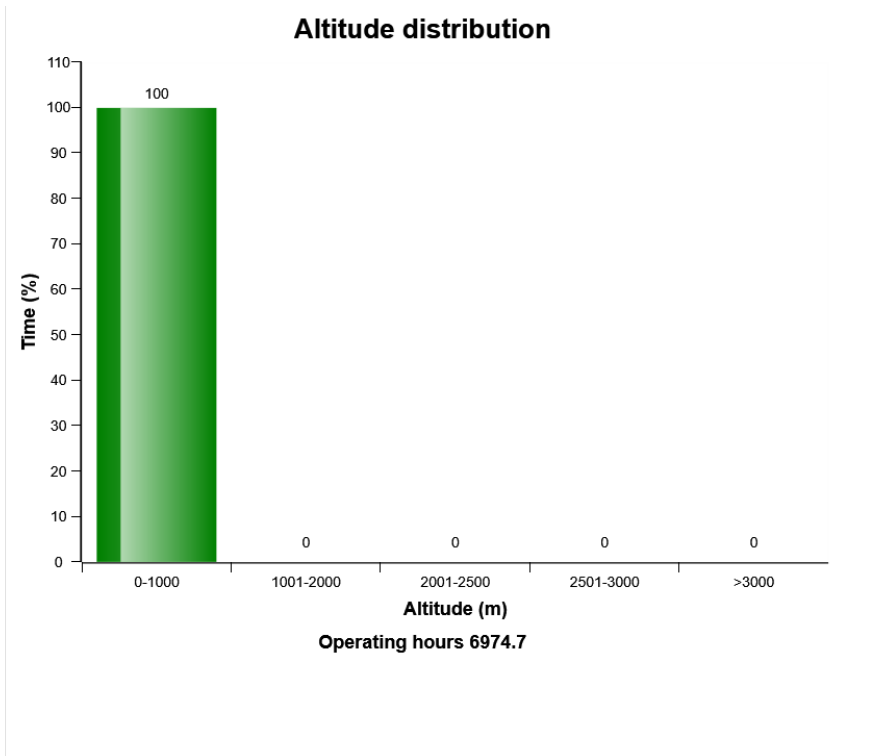
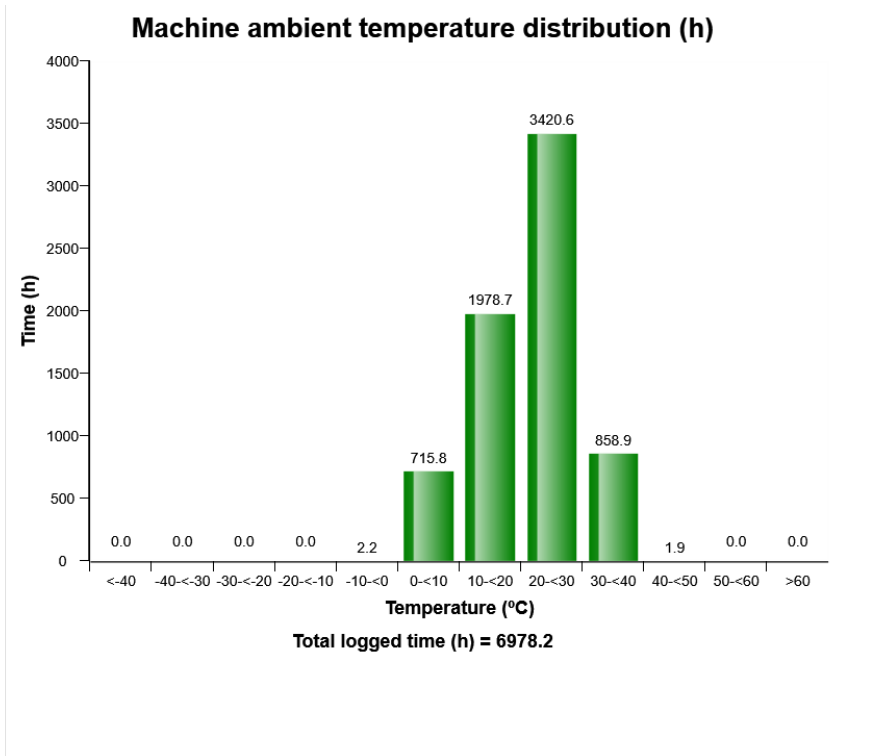
Machine speed, distribution



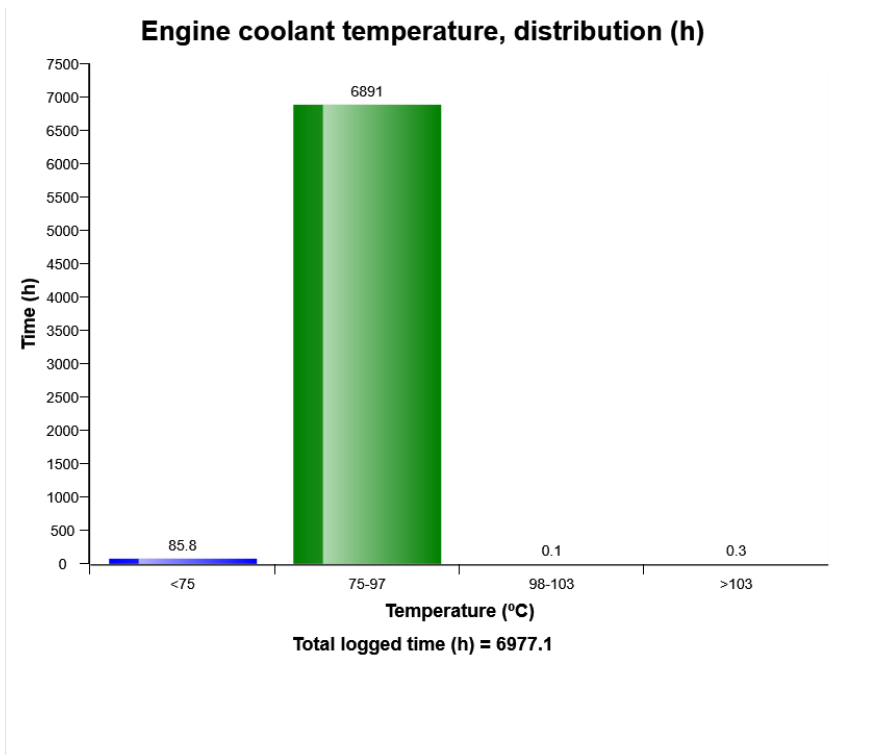
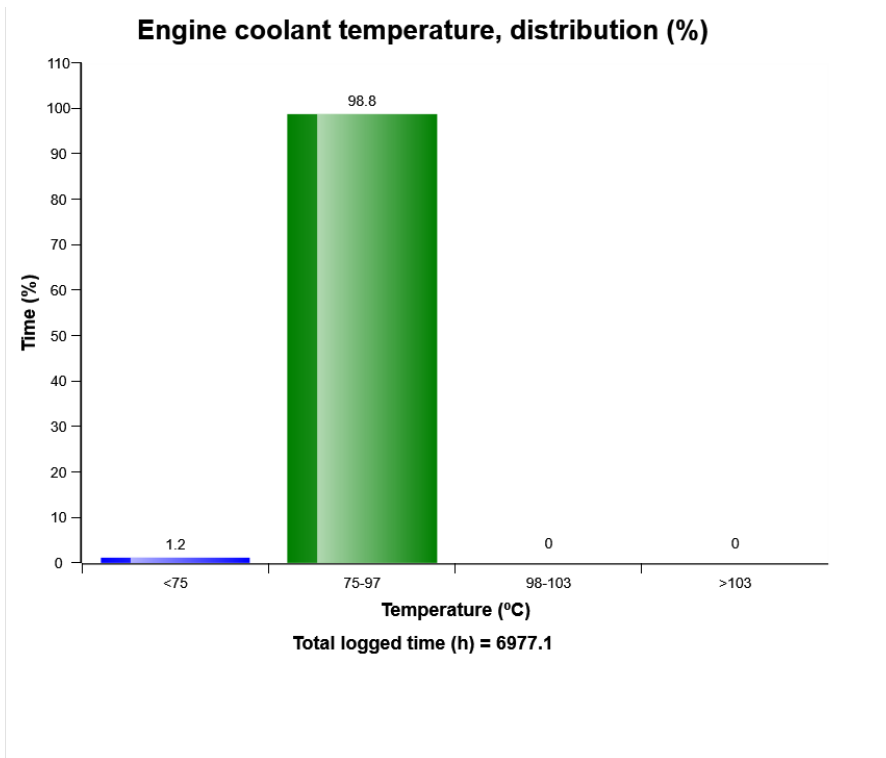
Average speed and distance



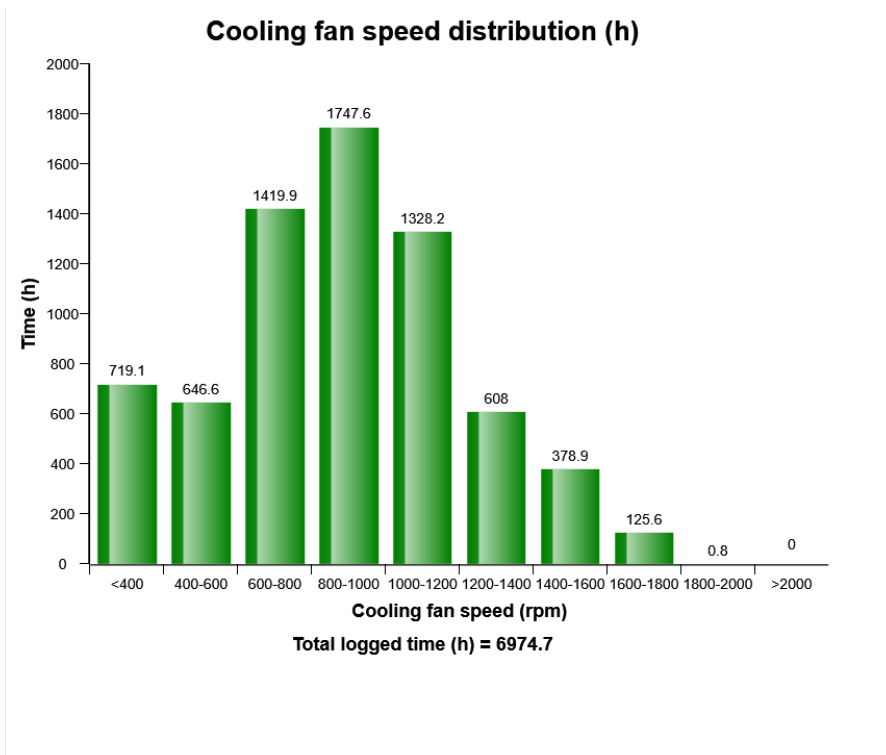
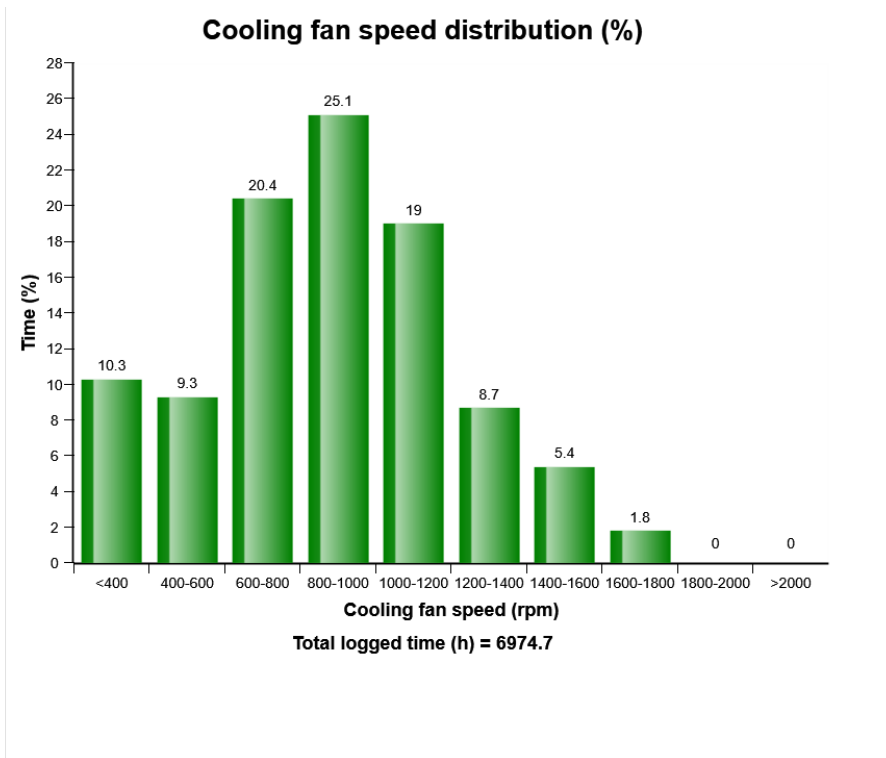
Machine model	SerialNo	Operating Hours	Reading Date
L110H	631307	6968.2	16/10/2019



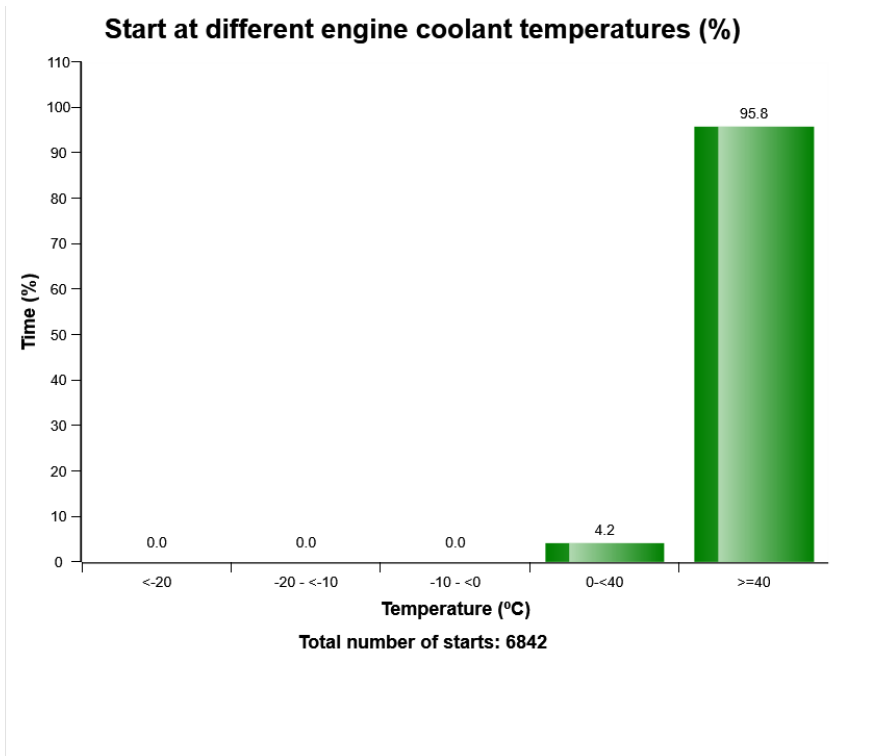
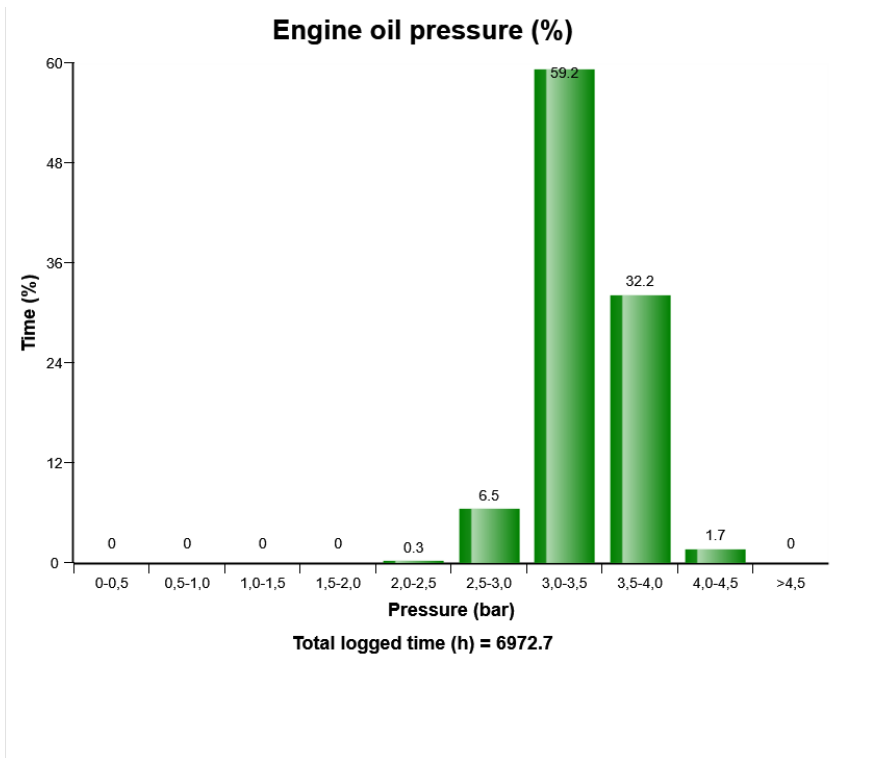
Machine model	SerialNo	Operating Hours	Reading Date
L110H	631307	6968.2	16/10/2019



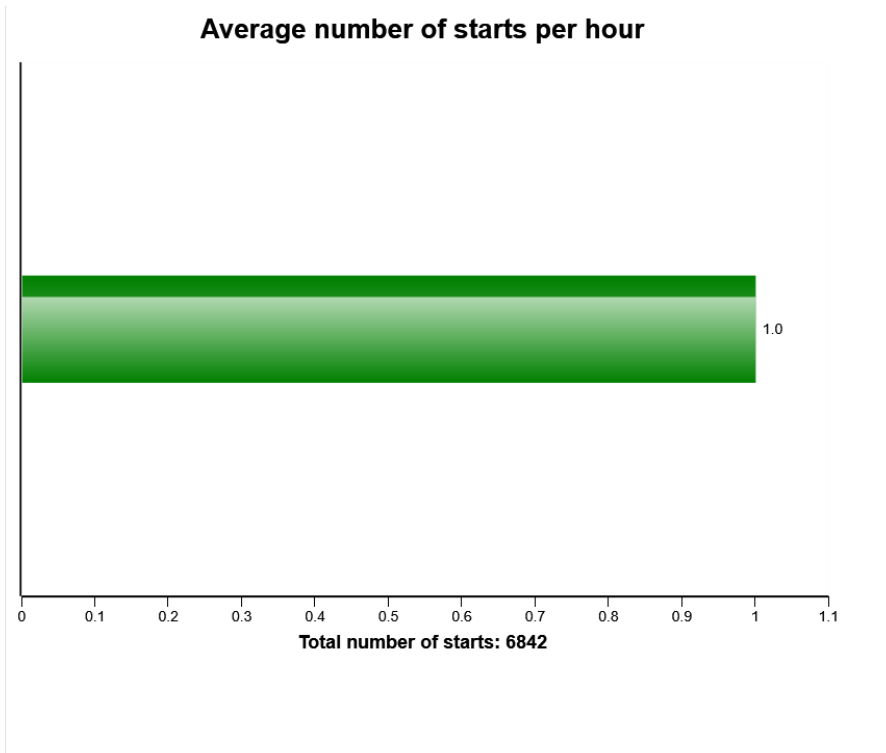
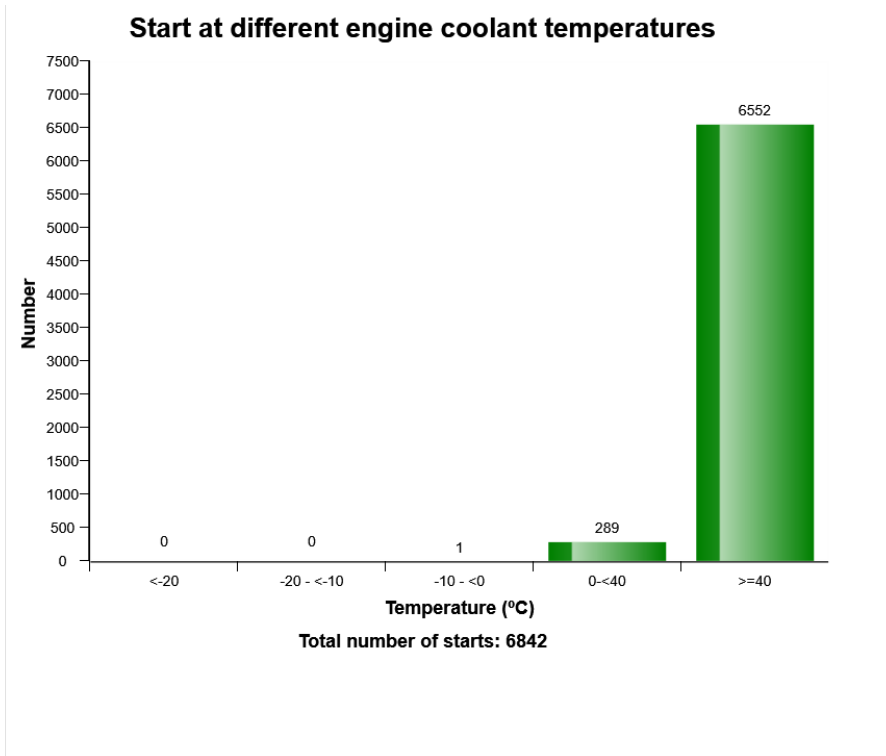
Machine model	SerialNo	Operating Hours	Reading Date
L110H	631307	6968.2	16/10/2019



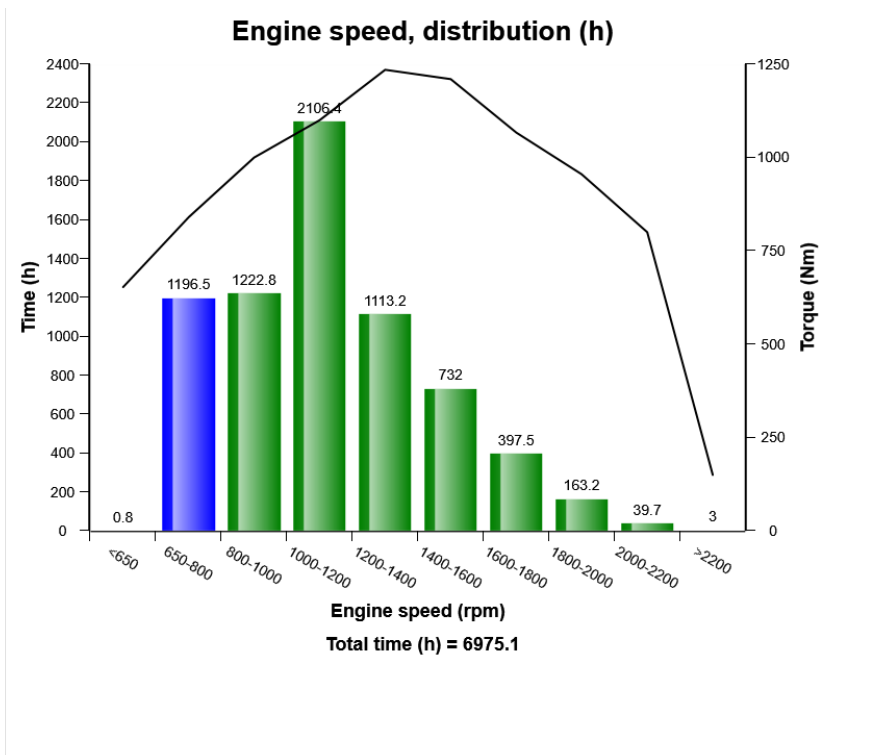
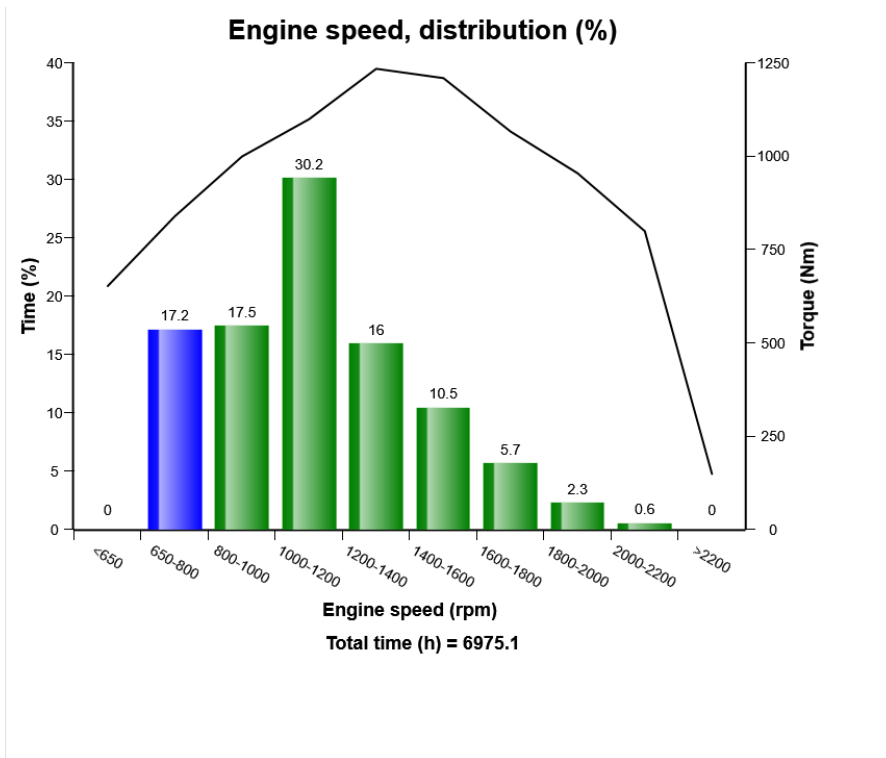
Machine model	SerialNo	Operating Hours	Reading Date
L110H	631307	6968.2	16/10/2019



Machine model	SerialNo	Operating Hours	Reading Date
L110H	631307	6968.2	16/10/2019



Machine model	SerialNo	Operating Hours	Reading Date
L110H	631307	6968.2	16/10/2019



Machine model	SerialNo	Operating Hours	Reading Date
L110H	631307	6968.2	16/10/2019

Starter overheating
Total number of occurrences = 12

Op hours	Year	Month	Day	Hour	Minute
0	2000	0	0	0	0
0	2000	0	0	0	0
0	2000	0	0	0	0
0	2000	0	0	0	0
0	2000	0	0	0	0
0	2000	0	0	0	0
0	2000	0	0	0	0
0	2000	0	0	0	0
0	2000	0	0	0	0
578	2017	6	20	12	49
1235	2017	9	27	10	5
1235	2017	9	27	10	5
2579	2018	2	19	11	58
2579	2018	2	19	11	57
3292	2018	5	18	11	33
3292	2018	5	18	11	25
3292	2018	5	18	11	25
3292	2018	5	18	11	34
3292	2018	5	18	11	34
4212	2018	8	3	12	40
4212	2018	8	3	12	40



Machine model	SerialNo	Operating Hours	Reading Date
L110H	631307	6968.2	16/10/2019

Low Air filter pressure
Total number of occurrences = 674

Op hours	Year	Month	Day	Hour	Minute	Duration (seconds)
6902	2019	5	5	4	30	671
6902	2019	5	5	4	28	5
6902	2019	5	5	3	53	1296
6903	2019	5	5	4	57	715
6903	2019	5	5	4	43	5
6903	2019	5	5	4	48	168
6903	2019	5	5	4	53	5
6903	2019	5	5	5	58	795
6903	2019	5	5	5	56	5
6903	2019	5	5	5	39	802
6903	2019	5	5	5	37	5
6904	2019	5	5	6	28	5
6904	2019	5	5	7	12	10706
6904	2019	5	5	6	17	4
6904	2019	5	5	6	19	347
6907	2019	5	5	10	24	8878
6907	2019	5	5	10	22	5
6909	2019	5	5	13	55	5
6909	2019	5	5	13	57	3701
6910	2019	5	5	15	21	5



Machine model	SerialNo	Operating Hours	Reading Date
L110H	631307	6968.2	16/10/2019

Regeneration aborted
Total number of occurrences = 6

	Op hours	Year	Month	Day	Hour	Minute
*	0	2000	0	0	0	0
*	0	2000	0	0	0	0
*	0	2000	0	0	0	0
*	0	2000	0	0	0	0
*	0	2000	0	0	0	0
*	0	2000	0	0	0	0
*	0	2000	0	0	0	0
*	0	2000	0	0	0	0
*	0	2000	0	0	0	0
*	0	2000	0	0	0	0
*	0	2000	0	0	0	0
*	0	2000	0	0	0	0
*	0	2000	0	0	0	0
*	0	2000	0	0	0	0
*	0	2000	0	0	0	0
*	0	2000	0	0	0	0
*	0	2000	0	0	0	0
*	0	2000	0	0	0	0
*	0	2000	0	0	0	0
*	563	2017	6	17	22	59
*	564	2017	6	18	0	0
*	1118	2017	9	17	16	5
*	1121	2017	9	17	20	27
*	2950	2018	3	31	17	17
*	6382	2019	2	27	1	28



Reason

0

0

0

0

0

0

0

0

0

0

0

0

0

0

2

2

2

2

2

2



Machine model	SerialNo	Operating Hours	Reading Date
L110H	631307	6968.2	16/10/2019

Regeneration ignored
Total number of occurrences = 79

	Op hours	Year	Month	Day	Hour	Minute
*	5823	2019	1	9	7	16
*	5823	2019	1	9	7	54
*	5823	2019	1	9	7	8
*	5823	2019	1	9	7	48
*	6379	2019	2	22	14	3
*	6379	2019	2	22	14	17
*	6380	2019	2	23	10	54
*	6380	2019	2	23	10	40
*	6380	2019	2	23	10	19
*	6380	2019	2	23	9	59
*	6380	2019	2	23	8	50
*	6380	2019	2	23	8	7
*	6380	2019	2	23	7	58
*	6380	2019	2	22	23	19
*	6380	2019	2	22	16	39
*	6380	2019	2	23	8	31
*	6380	2019	2	23	8	16
*	6381	2019	2	23	11	18
*	6381	2019	2	27	0	29
*	6940	2019	5	7	5	49



**Duration
(min)**

24
8
1
4
7
15
3
5
10
3
1
1
1
1
11
17
1
26
15
4



Machine model	SerialNo	Operating Hours	Reading Date
L110H	631307	6968.2	16/10/2019

Regeneration duration
Total number of occurrences = 24

	Op hours	Year	Month	Day	Hour	Minute
*	1118	2017	9	17	16	5
*	1119	2017	9	17	17	47
*	1121	2017	9	17	20	27
*	1125	2017	9	18	1	12
*	1235	2017	9	27	10	36
*	1789	2017	11	27	3	0
*	1793	2017	11	27	7	23
*	2379	2018	2	9	7	48
*	2950	2018	3	31	17	17
*	3004	2018	4	20	8	20
*	3610	2018	6	11	15	38
*	4176	2018	7	18	8	57
*	4182	2018	7	18	14	31
*	4188	2018	7	20	11	47
*	4189	2018	7	24	15	55
*	4705	2018	9	8	18	50
*	5261	2018	10	25	1	25
*	5823	2019	1	9	8	2
*	6381	2019	2	27	0	45
*	6940	2019	5	7	5	53



**Duration
(min)**

0
0
0
45
38
0
45
44
0
36
44
0
0
7
44
44
45
45
44
44



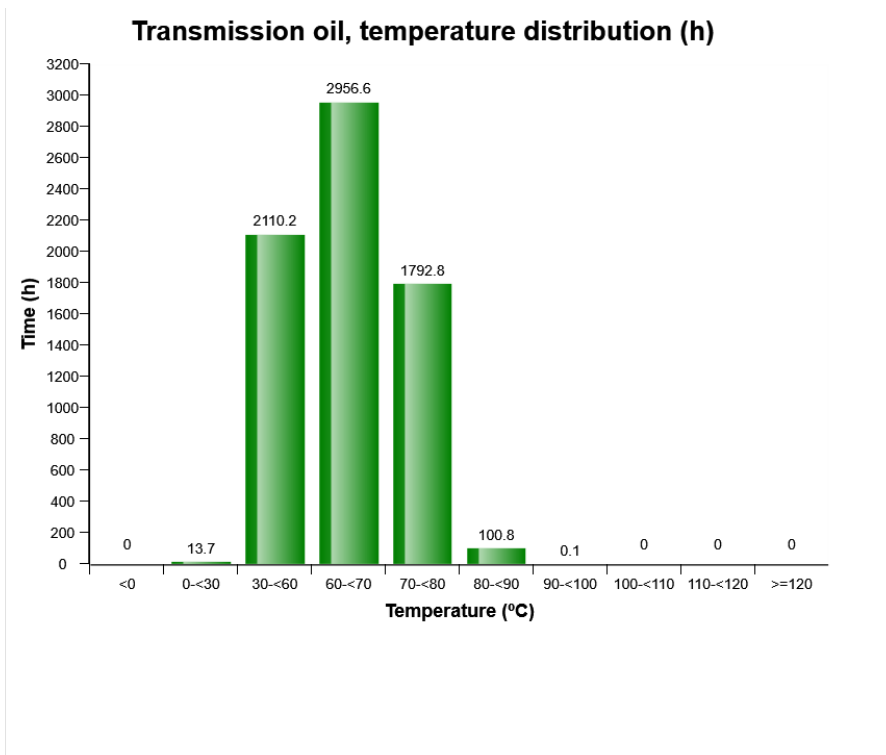
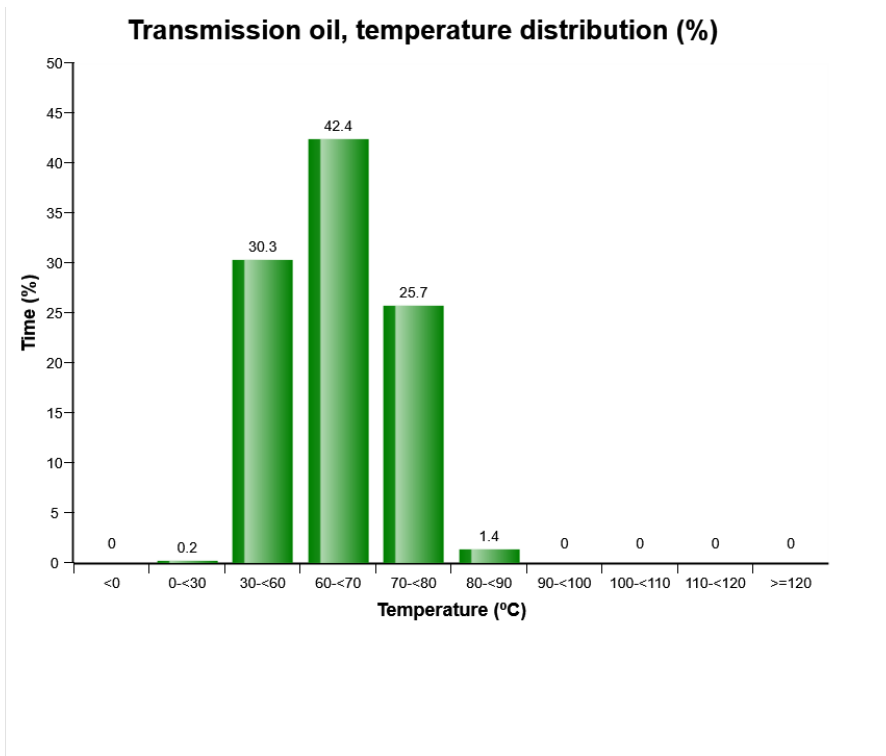
Machine model	SerialNo	Operating Hours	Reading Date
L110H	631307	6968.2	16/10/2019

**High engine coolant temperature
Total number of occurrences = 7**

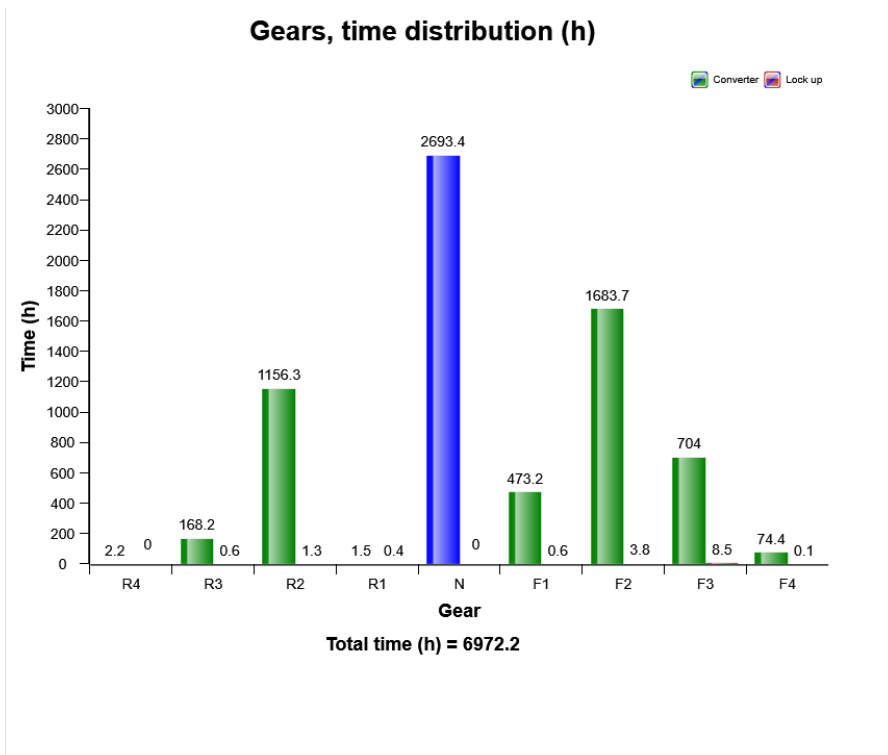
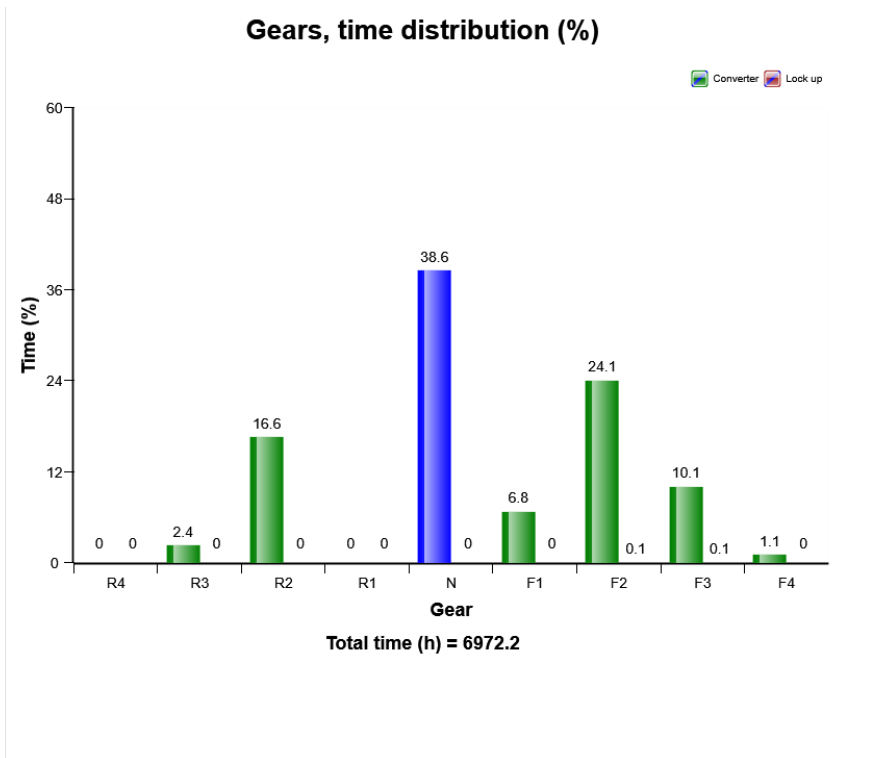
Op hours	Year	Month	Day	Hour	Minute	Duration (sec)	Extreme (° C)
0	2000	0	0	0	0	0	0
0	2000	0	0	0	0	0	0
0	2000	0	0	0	0	0	0
0	2000	0	0	0	0	0	0
0	2000	0	0	0	0	0	0
0	2000	0	0	0	0	0	0
0	2000	0	0	0	0	0	0
0	2000	0	0	0	0	0	0
0	2000	0	0	0	0	0	0
0	2000	0	0	0	0	0	0
0	2000	0	0	0	0	0	0
0	2000	0	0	0	0	0	0
0	2000	0	0	0	0	0	0
0	2000	0	0	0	0	0	0
0	2000	0	0	0	0	0	0
6327	2019	2	6	11	17	52	105
6327	2019	2	6	9	0	122	123
6327	2019	2	6	8	57	135	123
6365	2019	2	18	8	43	194	120
6365	2019	2	18	8	0	68	105
6365	2019	2	18	7	50	249	113
6365	2019	2	18	7	33	140	114



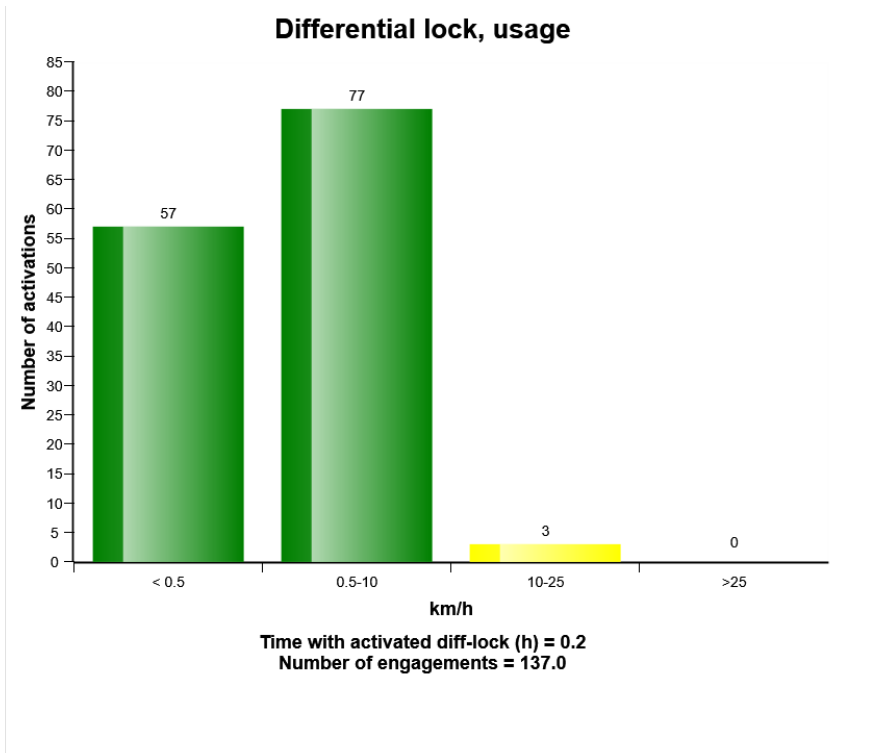
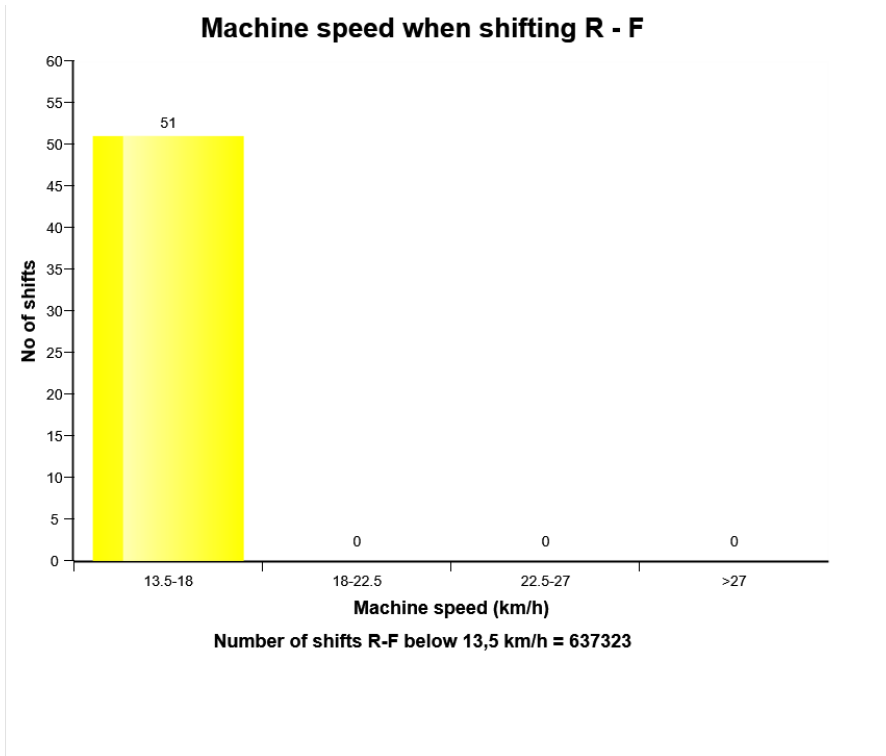
Machine model	SerialNo	Operating Hours	Reading Date
L110H	631307	6968.2	16/10/2019



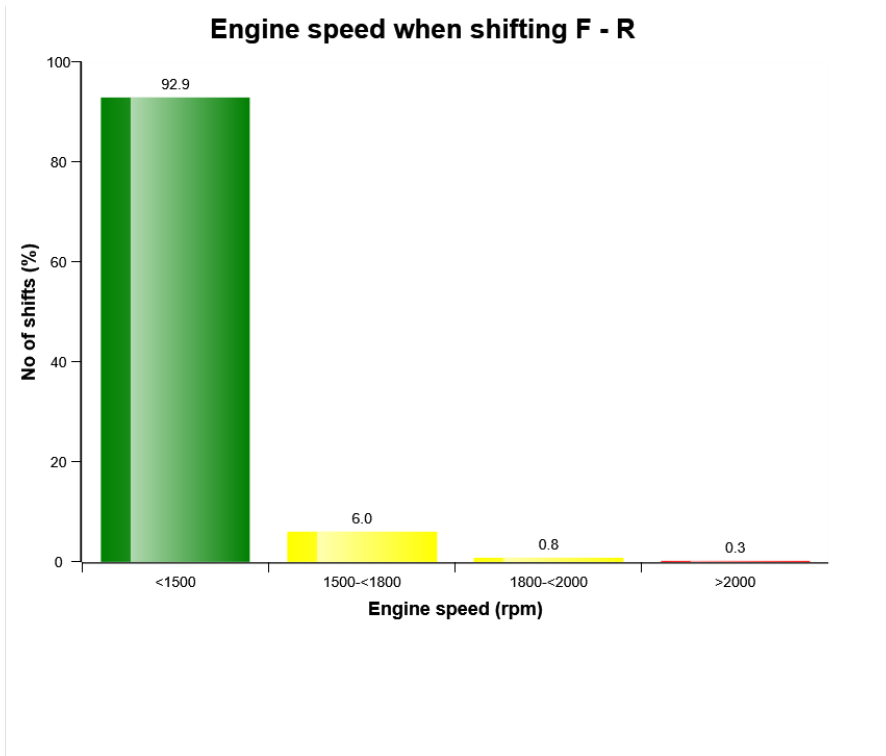
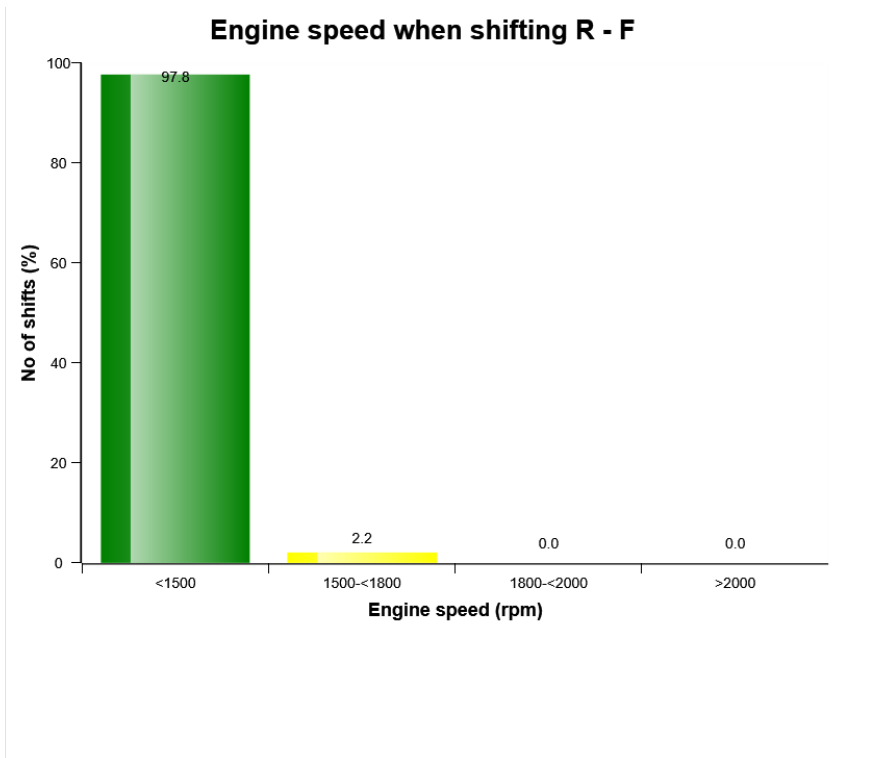
Machine model	SerialNo	Operating Hours	Reading Date
L110H	631307	6968.2	16/10/2019



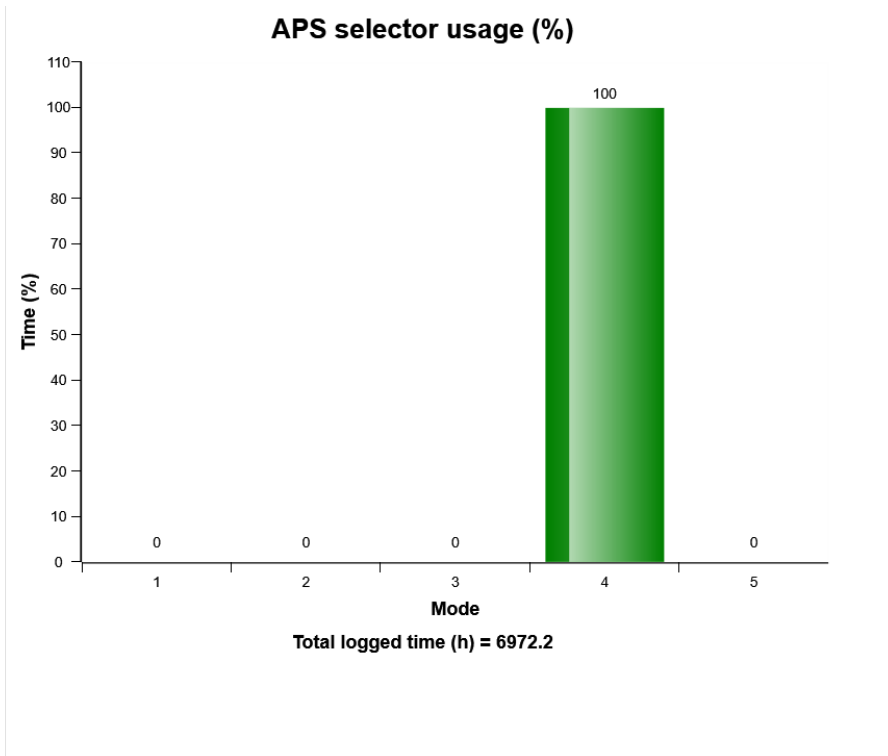
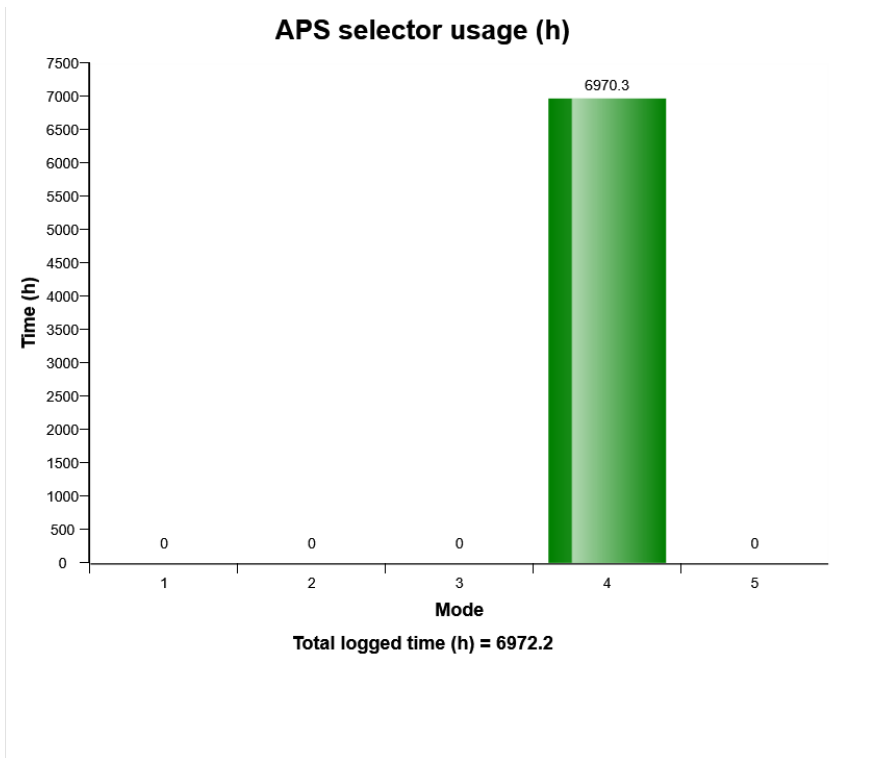
Machine model	SerialNo	Operating Hours	Reading Date
L110H	631307	6968.2	16/10/2019



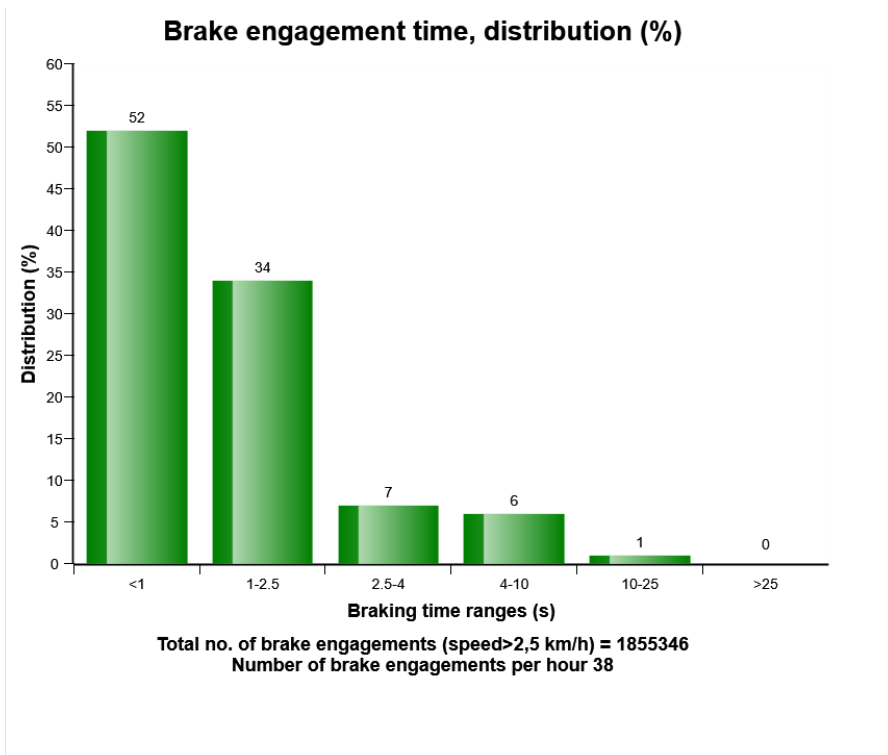
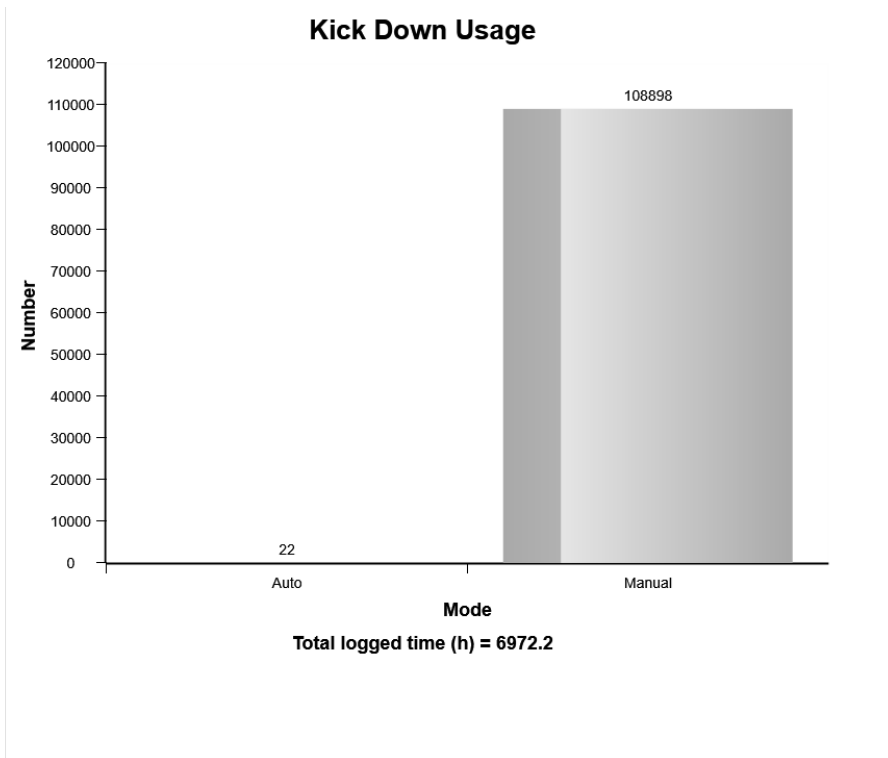
Machine model	SerialNo	Operating Hours	Reading Date
L110H	631307	6968.2	16/10/2019



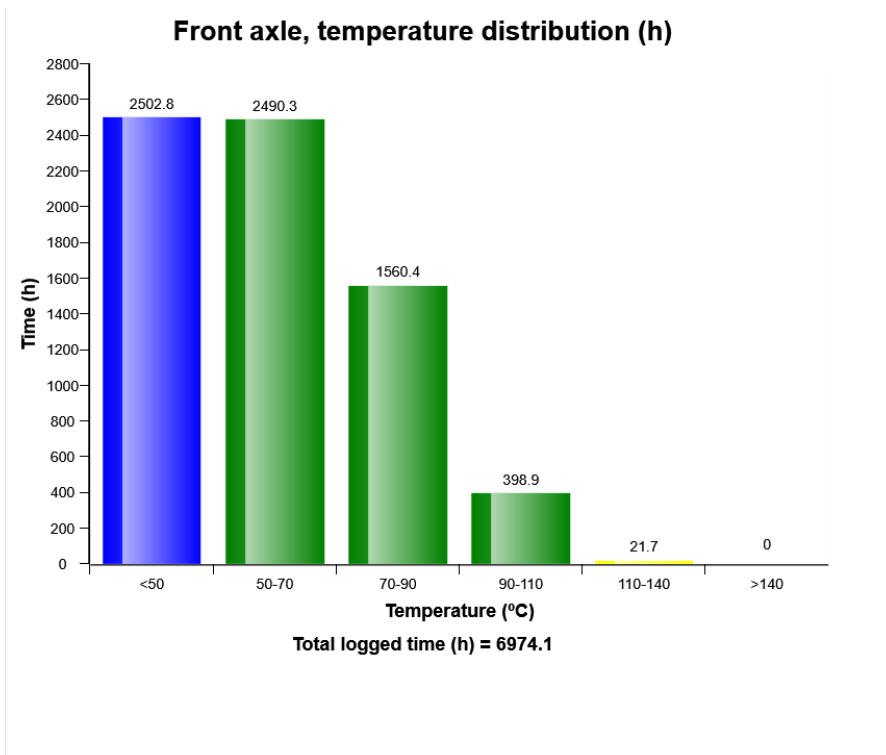
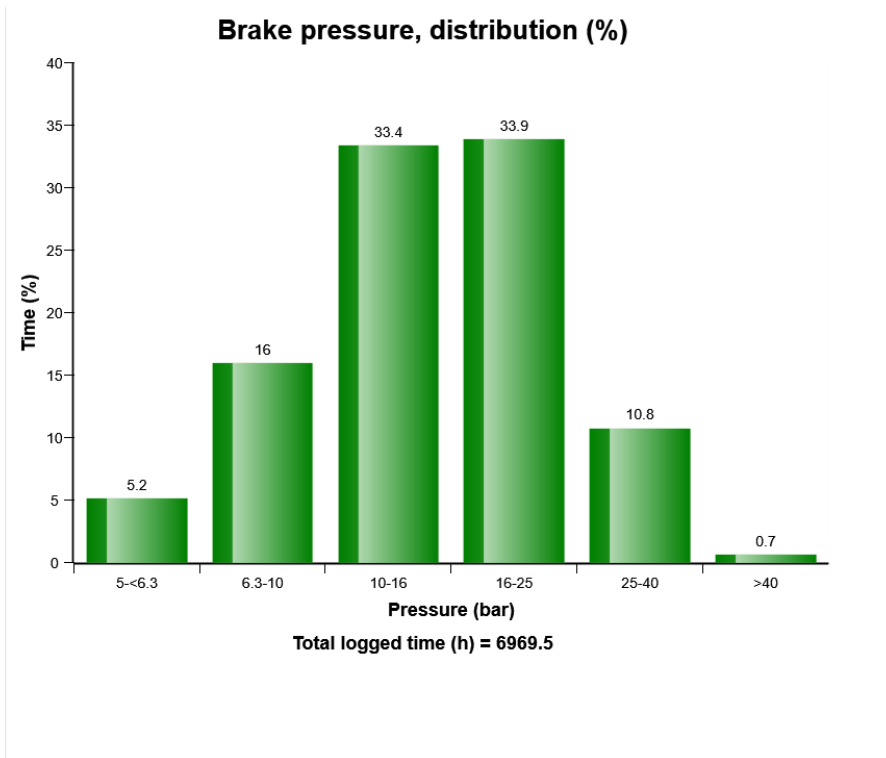
Machine model	SerialNo	Operating Hours	Reading Date
L110H	631307	6968.2	16/10/2019



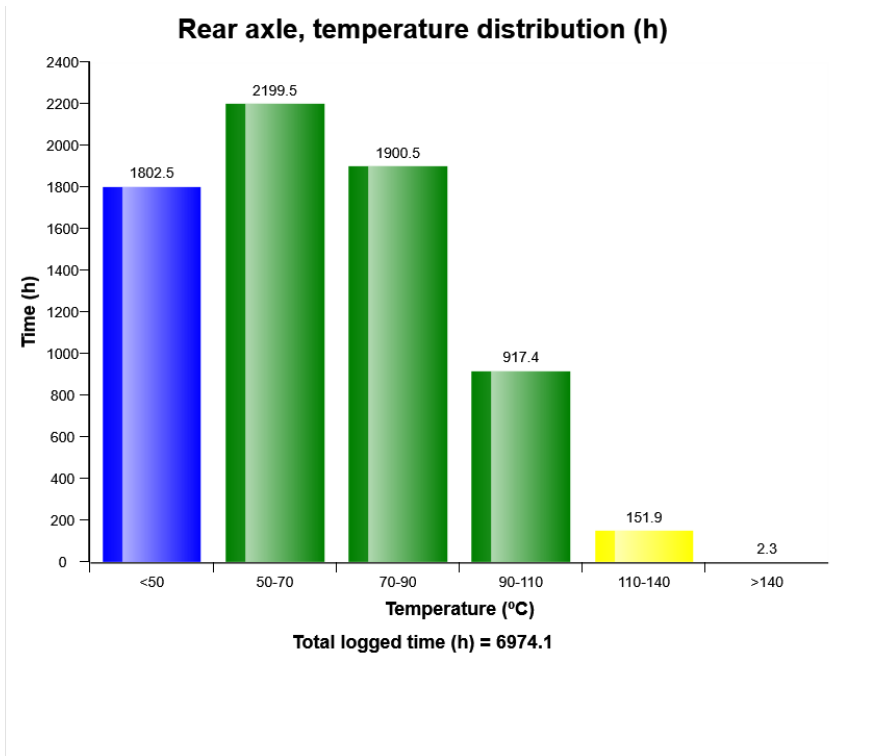
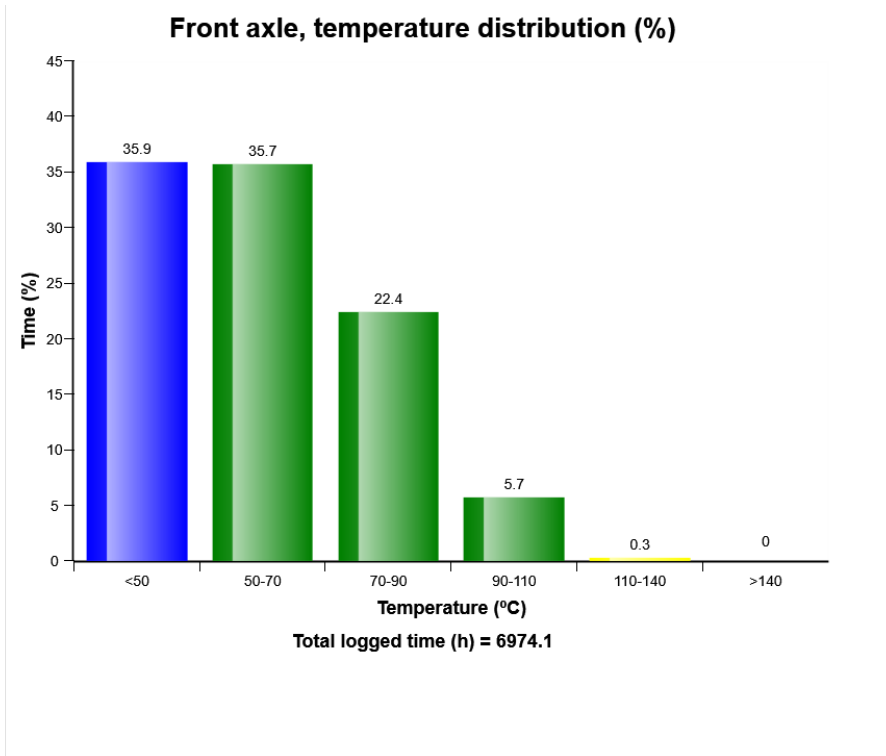
Machine model	SerialNo	Operating Hours	Reading Date
L110H	631307	6968.2	16/10/2019



Machine model	SerialNo	Operating Hours	Reading Date
L110H	631307	6968.2	16/10/2019



Machine model	SerialNo	Operating Hours	Reading Date
L110H	631307	6968.2	16/10/2019



Machine model	SerialNo	Operating Hours	Reading Date
L110H	631307	6968.2	16/10/2019

Parking brake usage
Total number of occurrences = 16336

Op hours	Year	Month	Day	Hour	Minute	Duration (minutes)
0	2019	7	22	12	45	37
0	2019	6	2	20	32	0
0	2019	5	25	2	1	1
0	2019	10	8	3	4	0
0	2019	10	8	3	2	0
0	2019	9	27	4	50	0
0	2019	9	27	4	48	0
0	2019	9	27	2	54	2
0	2019	9	27	2	45	1
0	2019	9	27	2	43	0
0	2019	9	21	8	6	8
0	2019	9	21	4	41	0
0	2019	9	21	3	27	2
0	2019	9	21	3	24	1
0	2019	9	11	5	57	0
0	2019	9	11	2	44	18
0	2019	9	11	2	38	3
0	2019	7	22	22	30	6
0	2019	6	2	20	34	0
0	2019	6	10	2	13	1



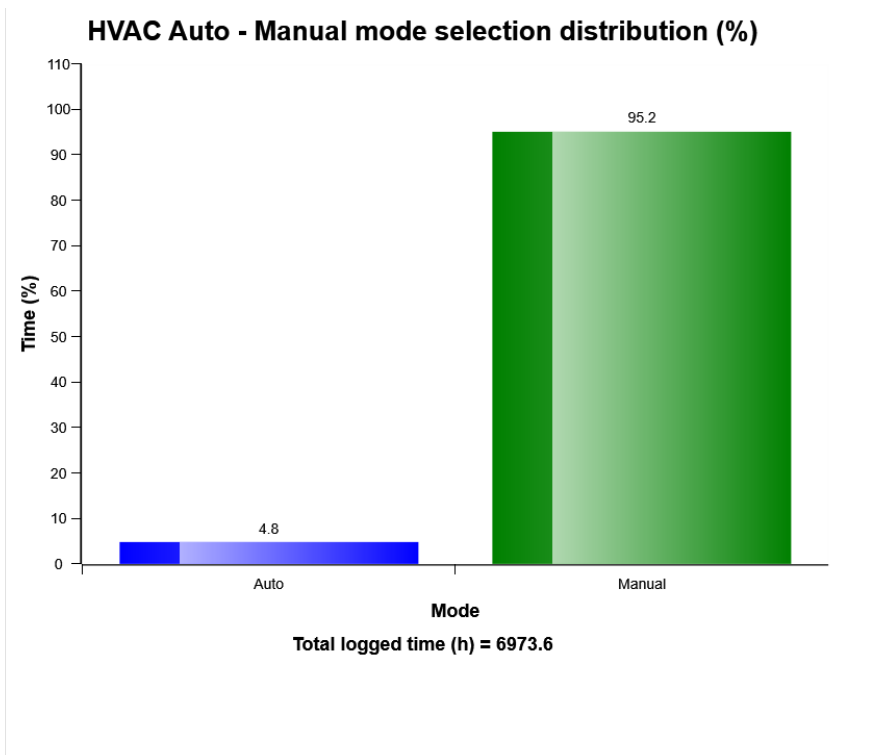
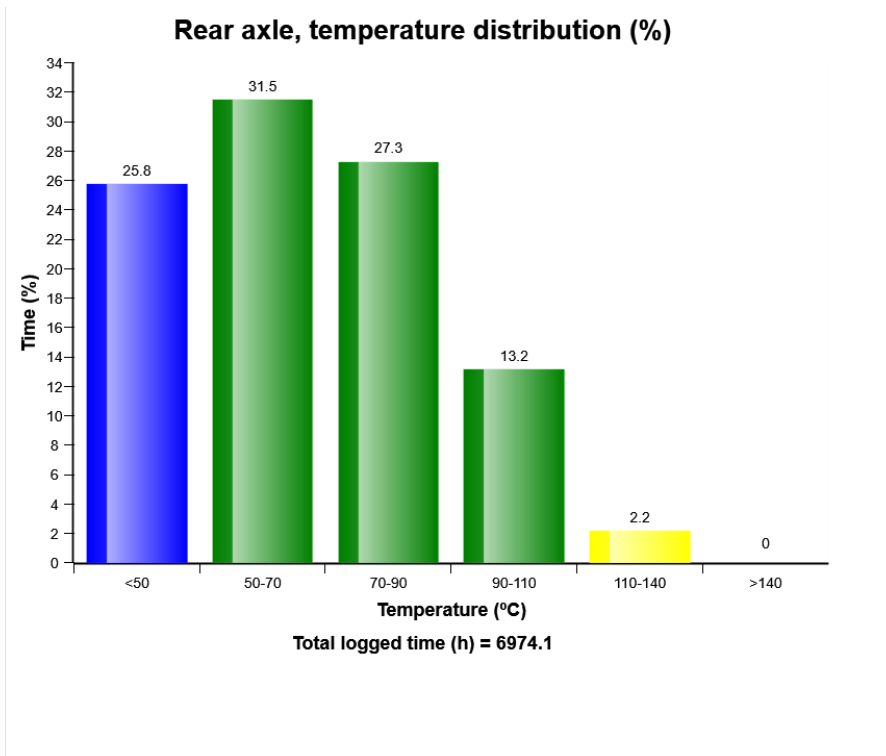
Machine model	SerialNo	Operating Hours	Reading Date
L110H	631307	6968.2	16/10/2019

Parking brake abuse
Total number of occurrences = 3

Op hours	Year	Month	Day	Hour	Minute	Duration (seconds)	Extreme (km/h)
0	2018	8	31	13	7	4	16
0	2000	0	0	0	0	0	0
0	2000	0	0	0	0	0	0
0	2000	0	0	0	0	0	0
0	2000	0	0	0	0	0	0
0	2000	0	0	0	0	0	0
0	2000	0	0	0	0	0	0
0	2000	0	0	0	0	0	0
0	2000	0	0	0	0	0	0
0	2000	0	0	0	0	0	0
0	2000	0	0	0	0	0	0
0	2000	0	0	0	0	0	0
0	2000	0	0	0	0	0	0
0	2000	0	0	0	0	0	0
0	2000	0	0	0	0	0	0
0	2000	0	0	0	0	0	0
0	2000	0	0	0	0	0	0
0	2000	0	0	0	0	0	0
0	2000	0	0	0	0	0	0
0	2019	3	27	9	17	0	3
0	2018	9	3	23	7	6	10
0	2000	0	0	0	0	0	0
0	2000	0	0	0	0	0	0

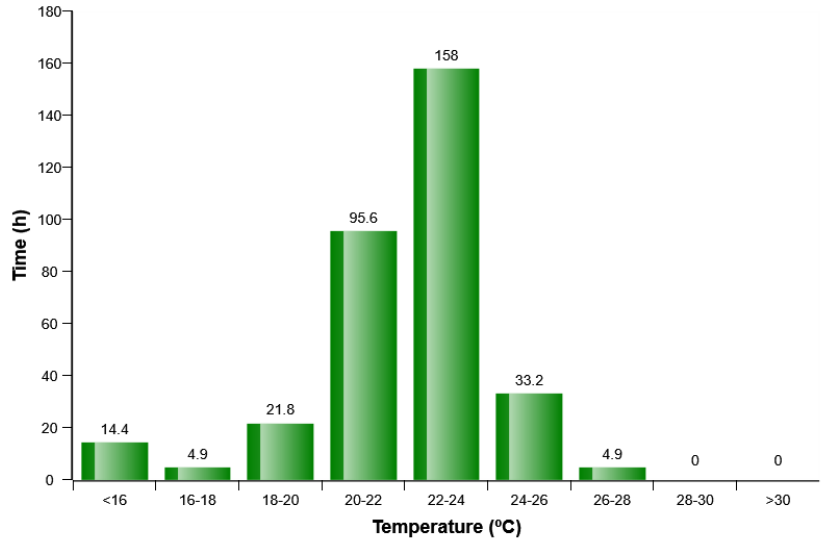


Machine model	SerialNo	Operating Hours	Reading Date
L110H	631307	6968.2	16/10/2019

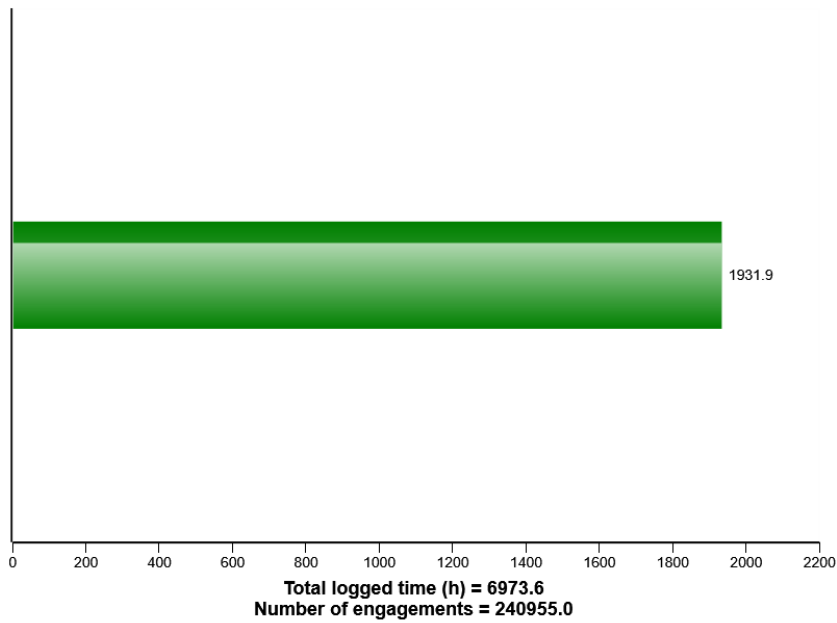


Machine model	SerialNo	Operating Hours	Reading Date
L110H	631307	6968.2	16/10/2019

HVAC air temperature setting in auto control mode distribution (h)

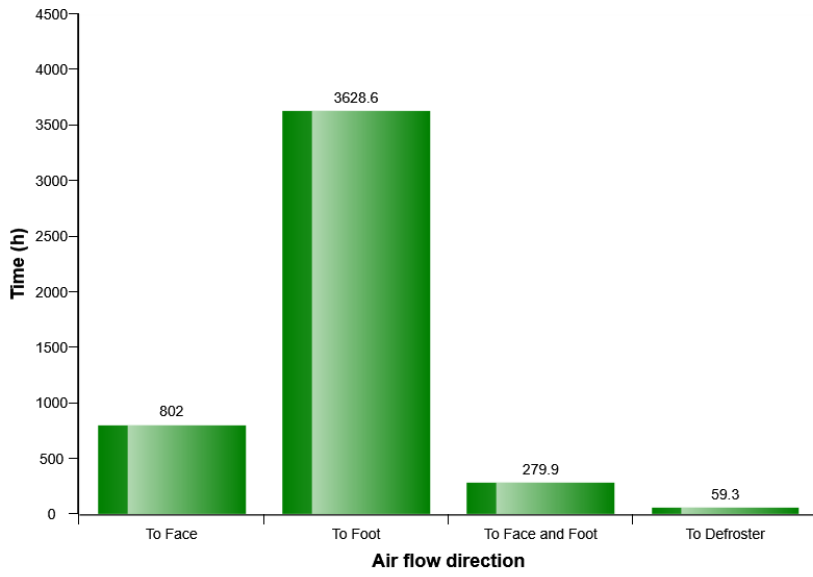


AC Compressor usage

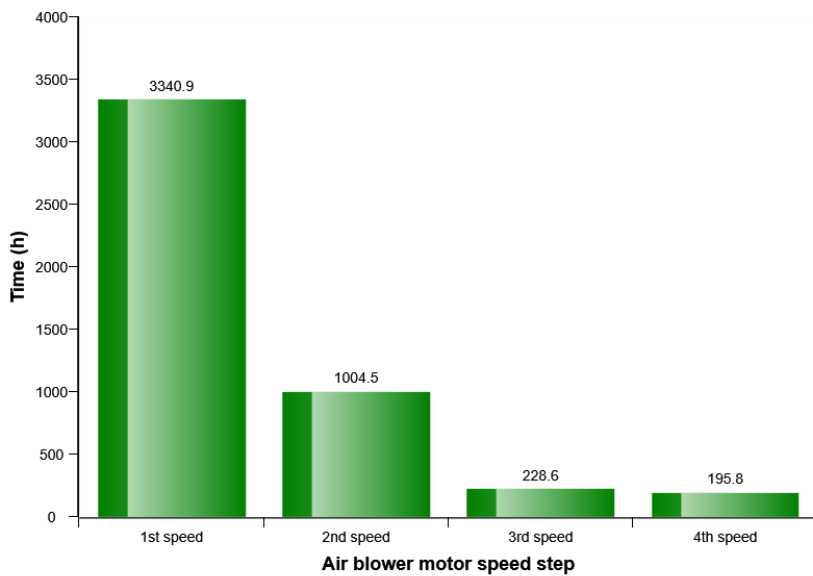


Machine model	SerialNo	Operating Hours	Reading Date
L110H	631307	6968.2	16/10/2019

HVAC air flow direction in manual mode distribution (h)



HVAC air blower motor speed in manual mode distribution (h)



Machine model	SerialNo	Operating Hours	Reading Date
L110H	631307	6968.2	16/10/2019

