

# VOLVO CONSTRUCTION EQUIPMENT MATRIS REPORT

Machine model <b>L60H</b>	SerialNo <b>621283</b>	Operating Hours <b>3888.2</b>	Reading Date <b>18/09/2019</b>
Company name <b>Flagler Davie FL</b>	Dealer	Report Issuer	
Contact name	Technician <b>rhilton</b>	Primary Application Dozing, Land clearing (e.g. coal, chips)	
Site	Workorder	Ground Condition	

MATRIS Reading, Summary / Recommendation



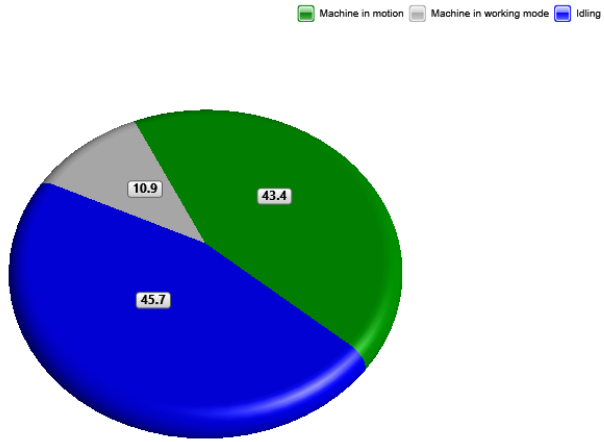
Machine model	SerialNo	Operating Hours	Reading Date
L60H	621283	3888.2	18/09/2019

Main equipment	Type	Equipment
	Tyre size/class	
	Main Attachment	
	Extra Counterweight	
	Ballast	
	Chains	
	Boom Suspension System	
	Attachment Interface	
	Volume m3 (yd3) / Area m2 (ft2)	
	Attachment make	



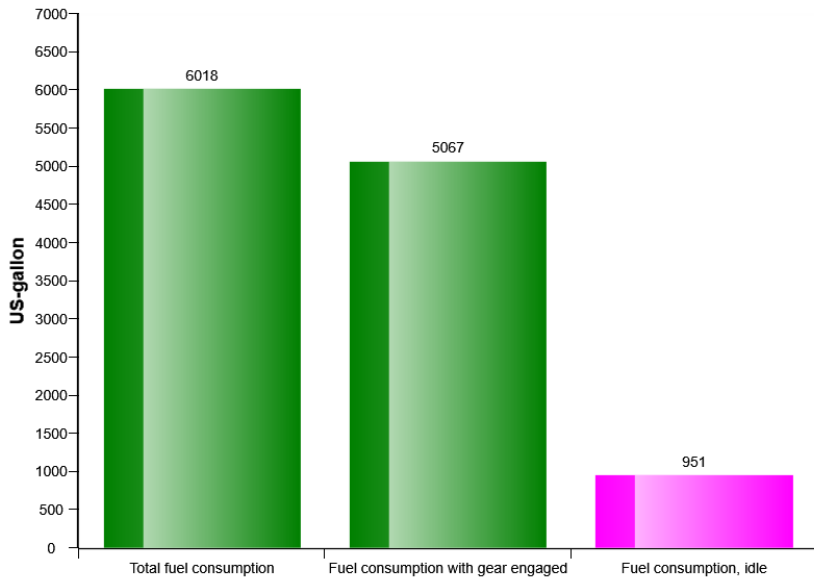
Machine model	SerialNo	Operating Hours	Reading Date
L60H	621283	3888.2	18/09/2019

### Machine utilization (%)



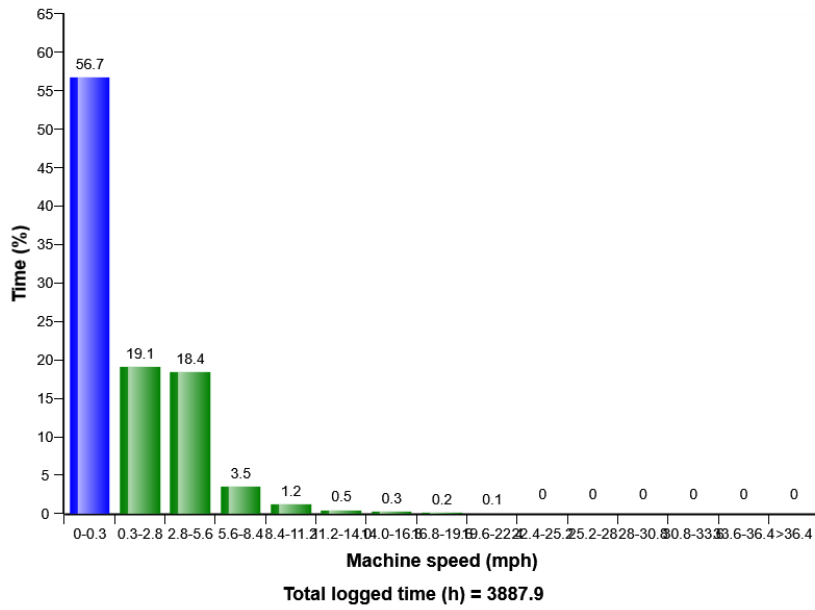
Total time (h) = 3887.9

### Fuel consumption

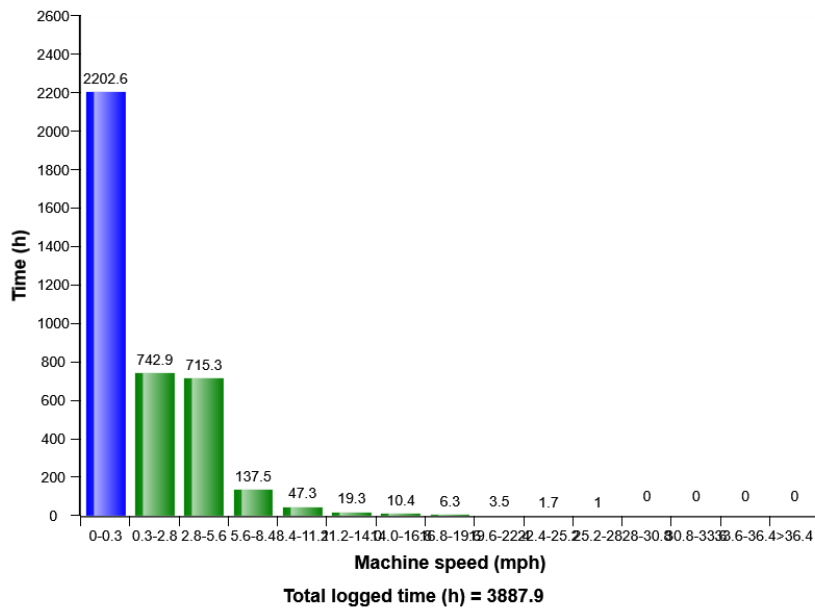


Machine model	SerialNo	Operating Hours	Reading Date
L60H	621283	3888.2	18/09/2019

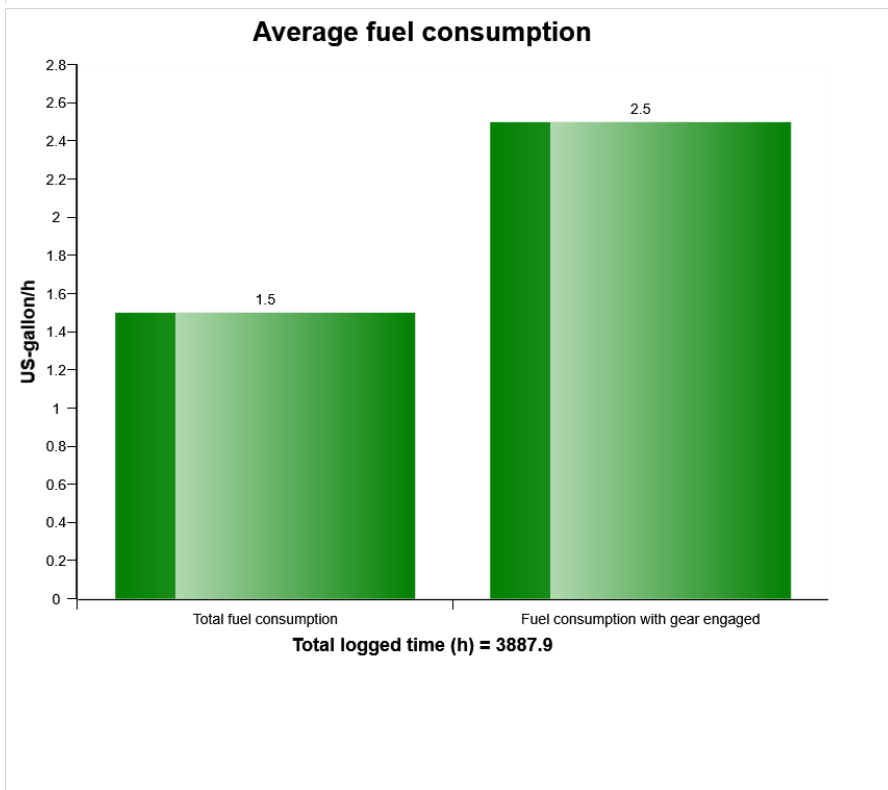
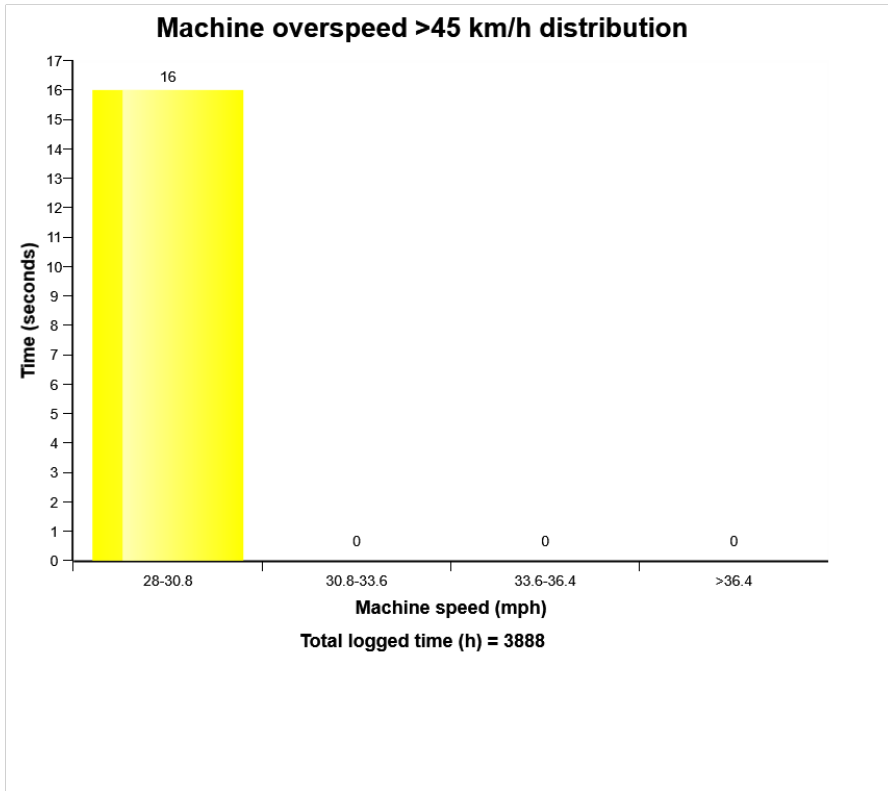
**Machine speed, distribution (%)**



**Machine speed, distribution**

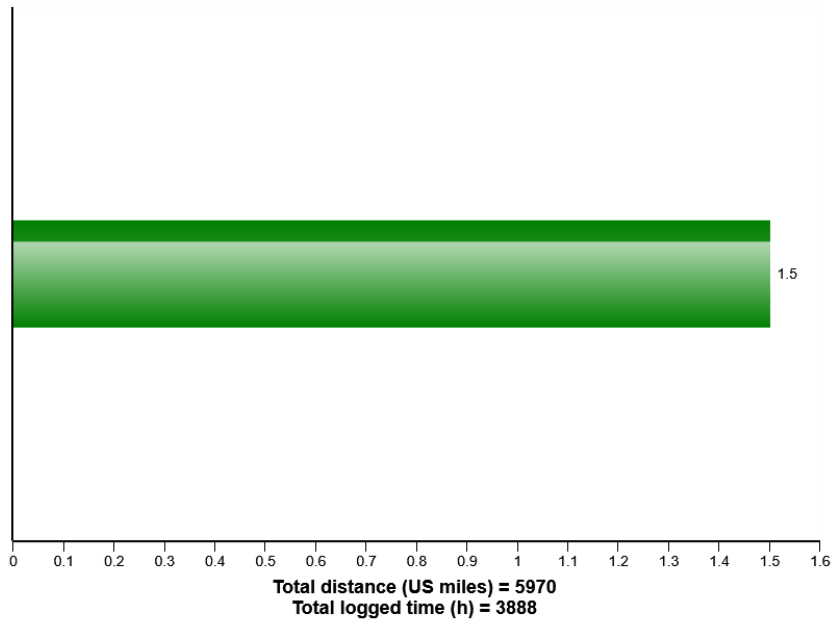


Machine model	SerialNo	Operating Hours	Reading Date
L60H	621283	3888.2	18/09/2019

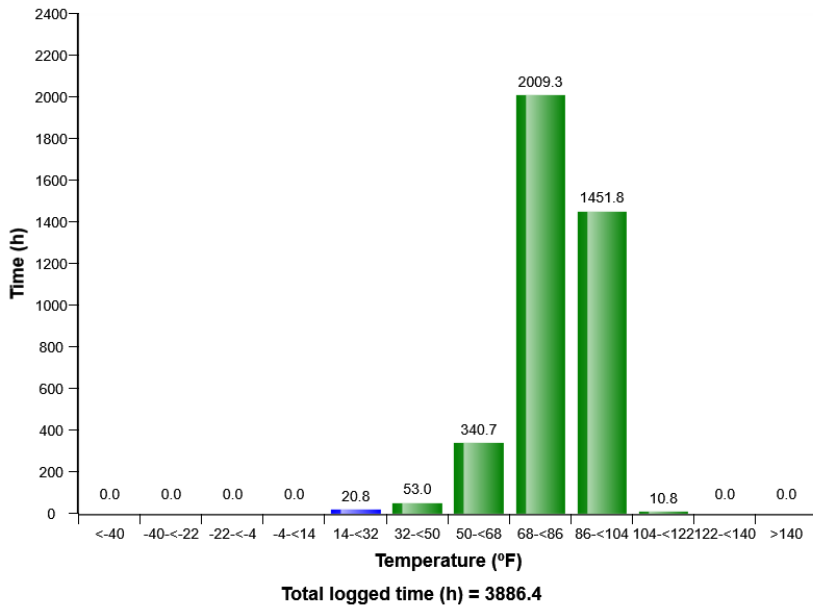


Machine model	SerialNo	Operating Hours	Reading Date
L60H	621283	3888.2	18/09/2019

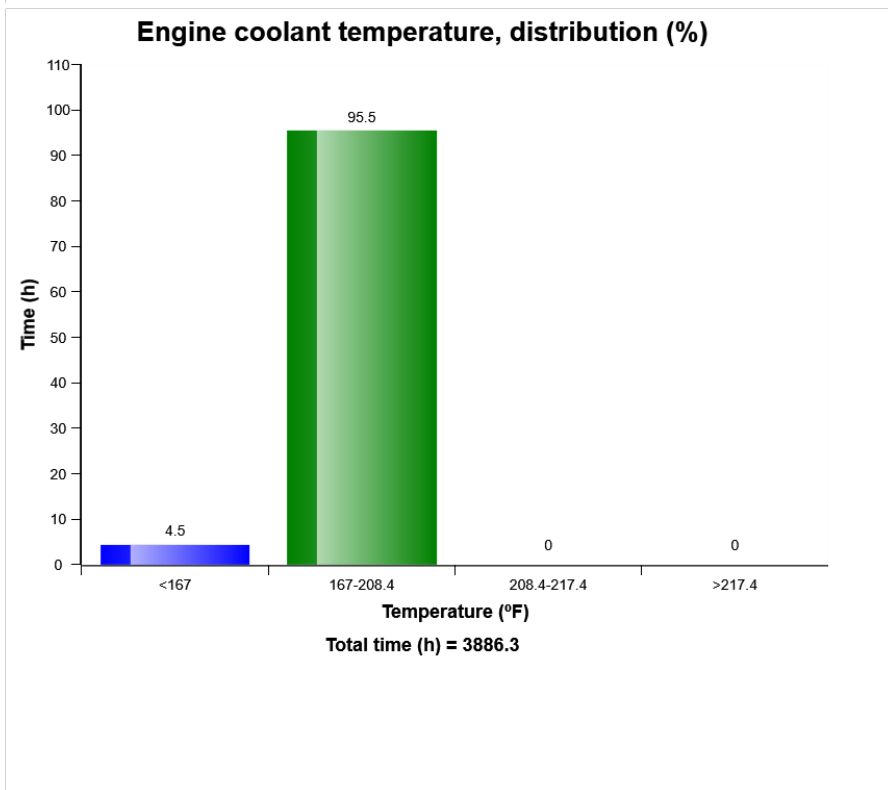
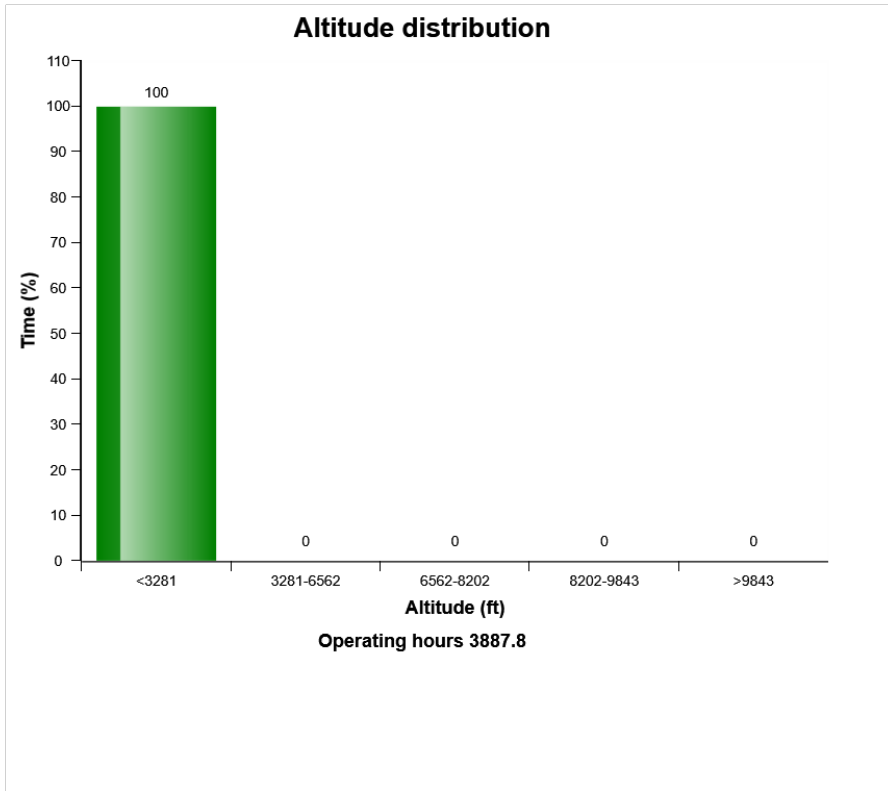
### Average speed and distance



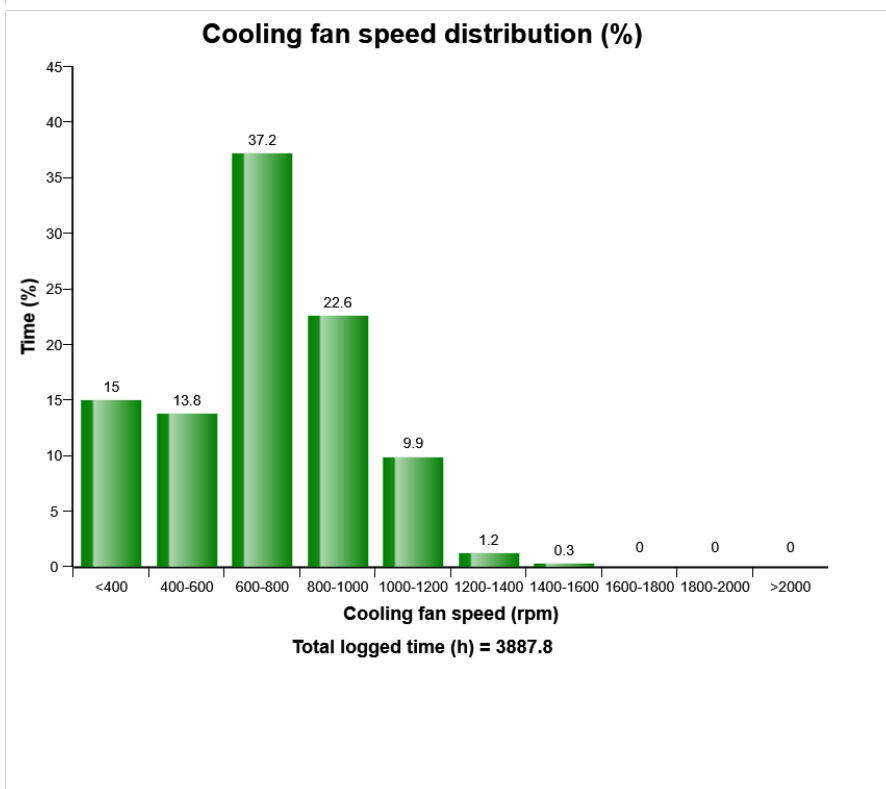
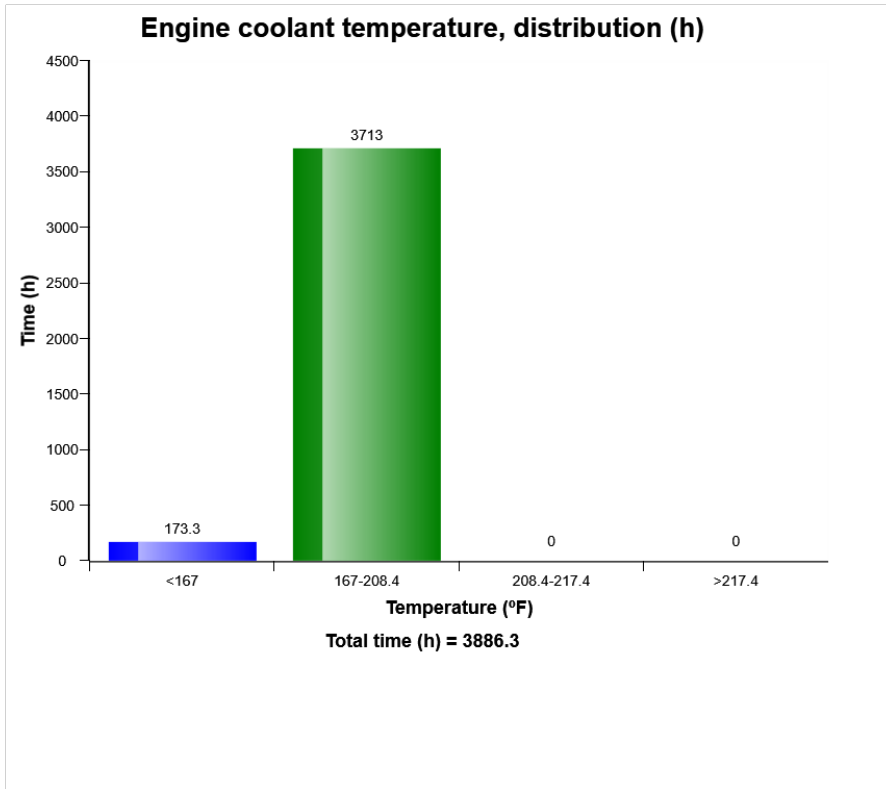
### Machine ambient temperature distribution (h)



Machine model	SerialNo	Operating Hours	Reading Date
L60H	621283	3888.2	18/09/2019

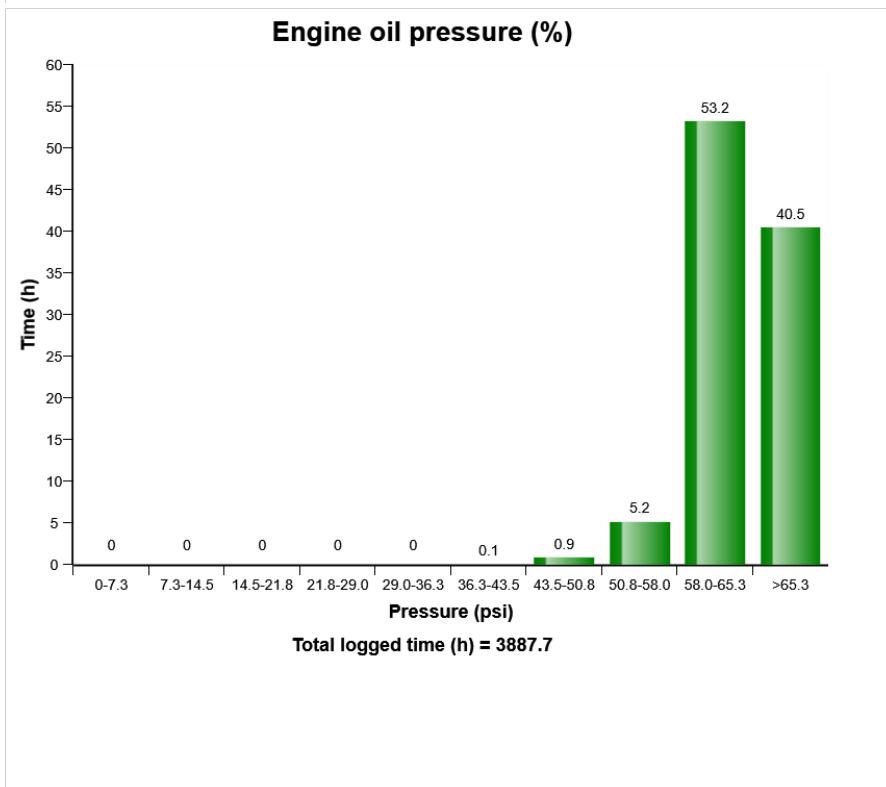
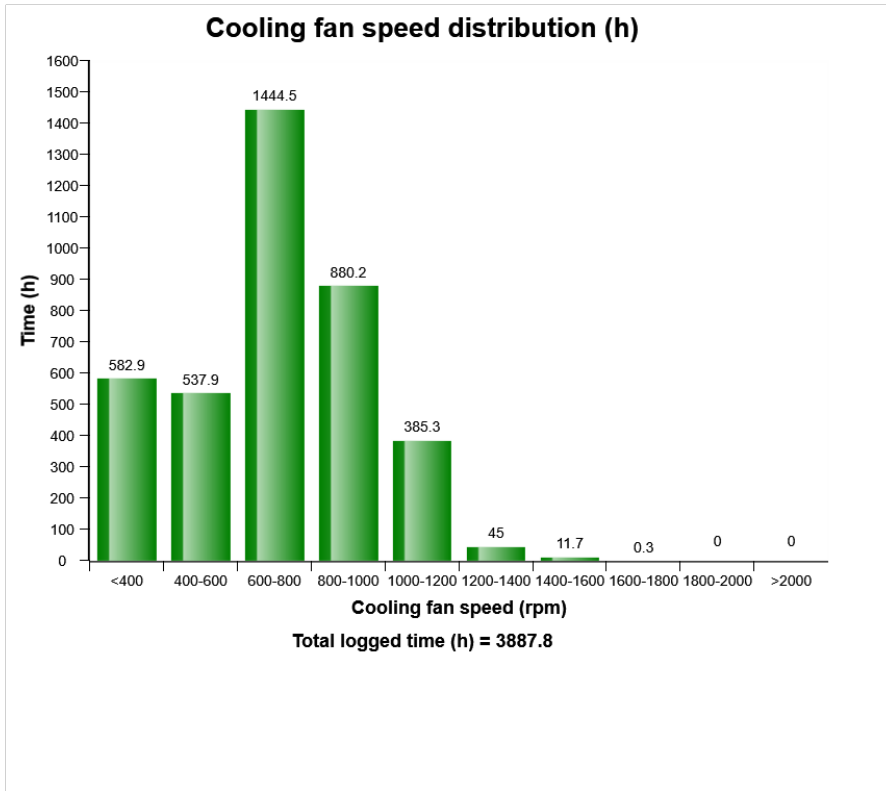


Machine model	SerialNo	Operating Hours	Reading Date
L60H	621283	3888.2	18/09/2019

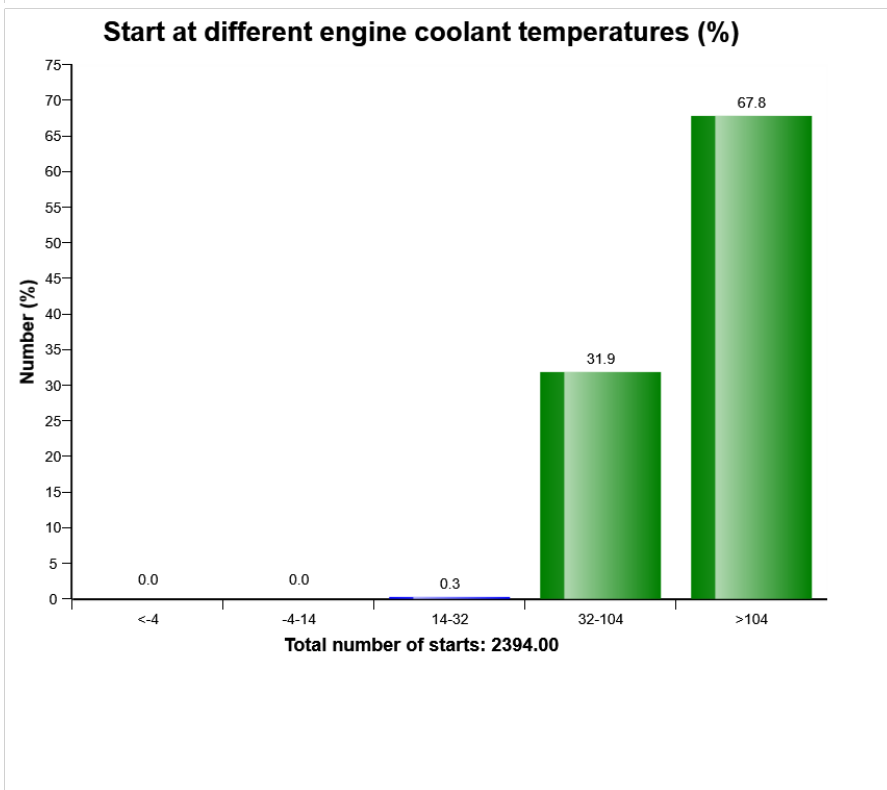
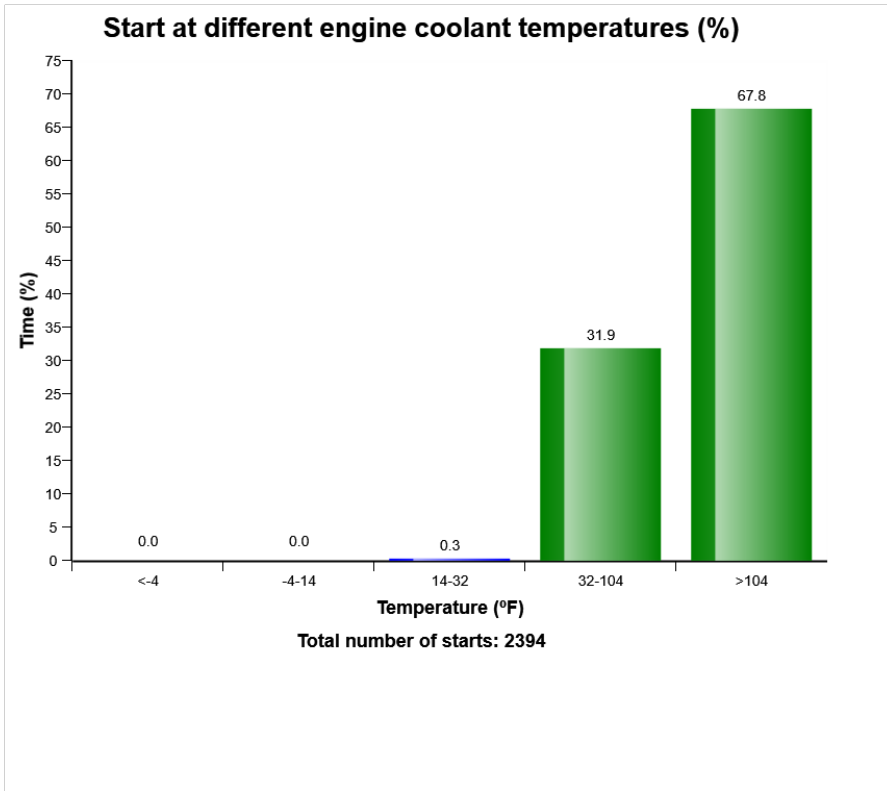




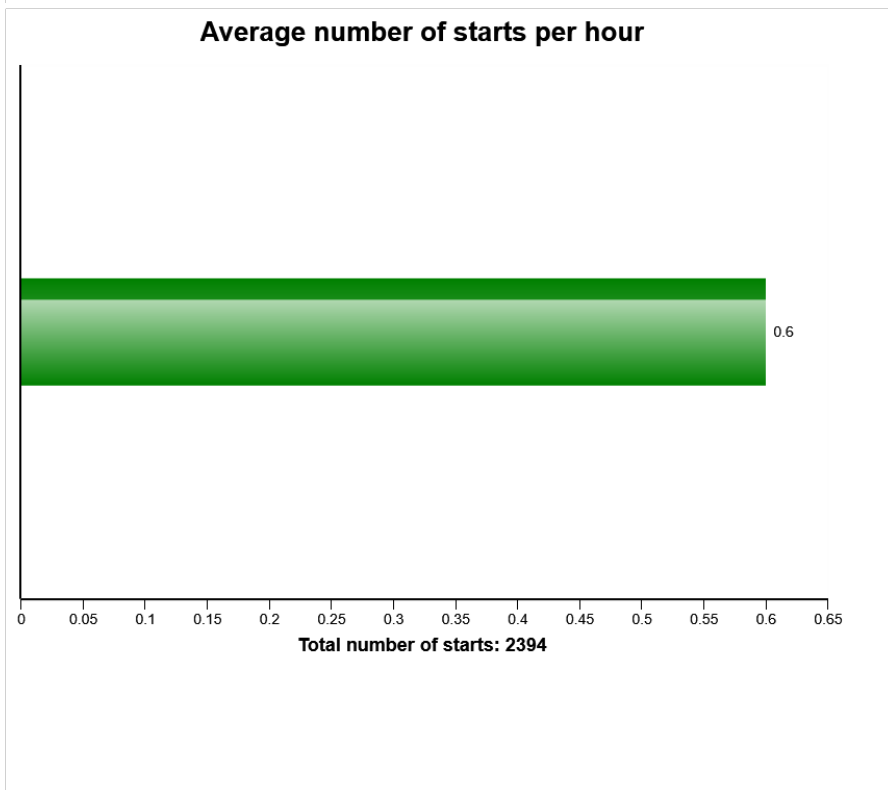
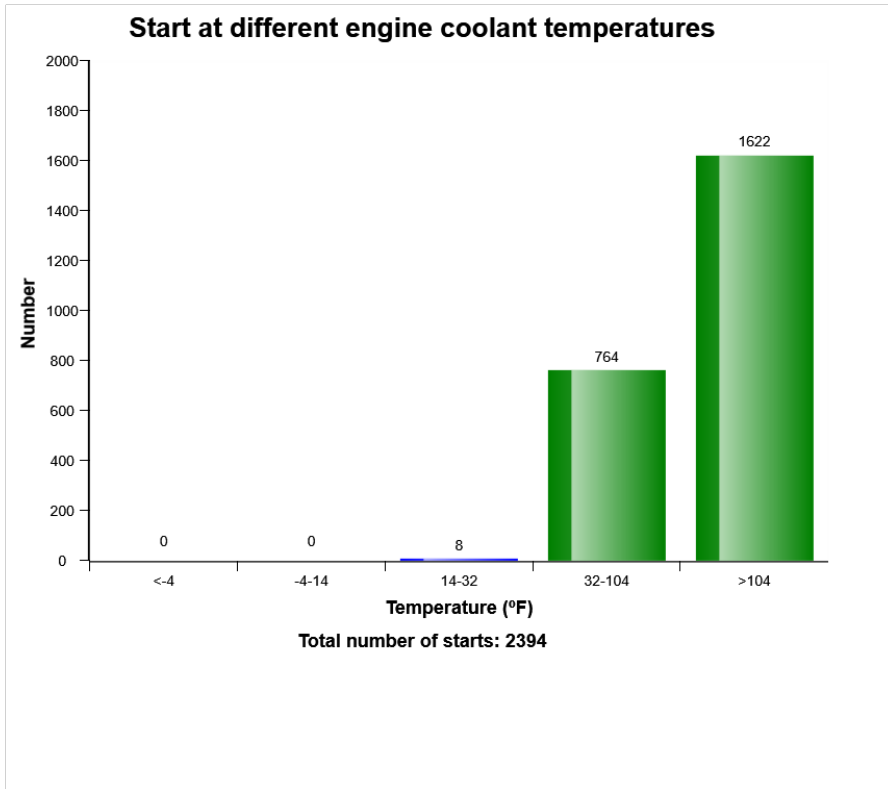
Machine model	SerialNo	Operating Hours	Reading Date
L60H	621283	3888.2	18/09/2019



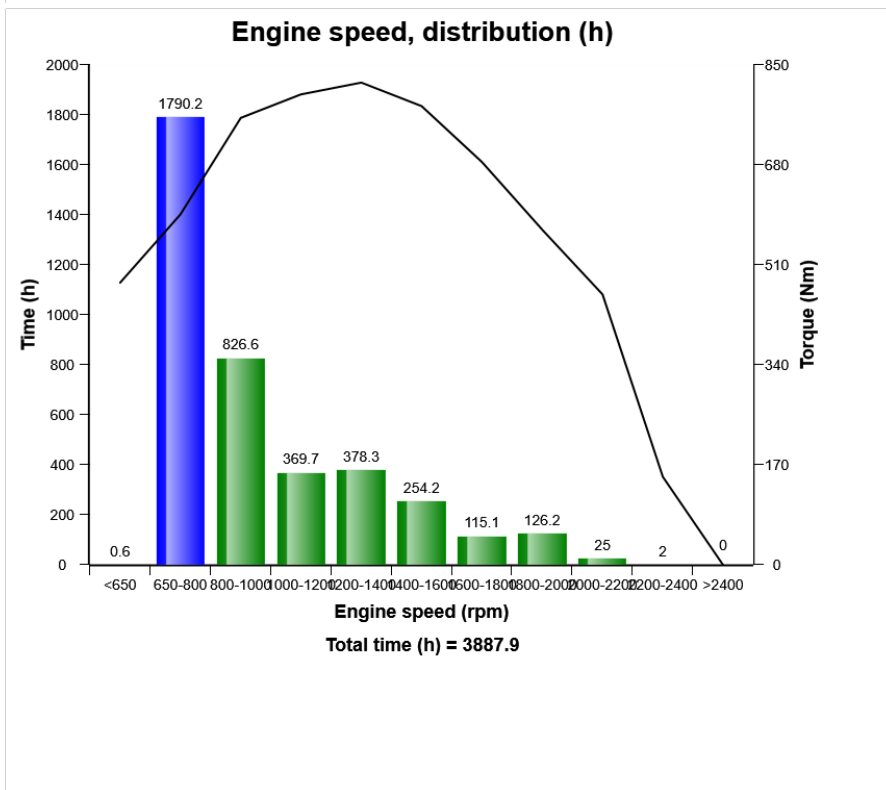
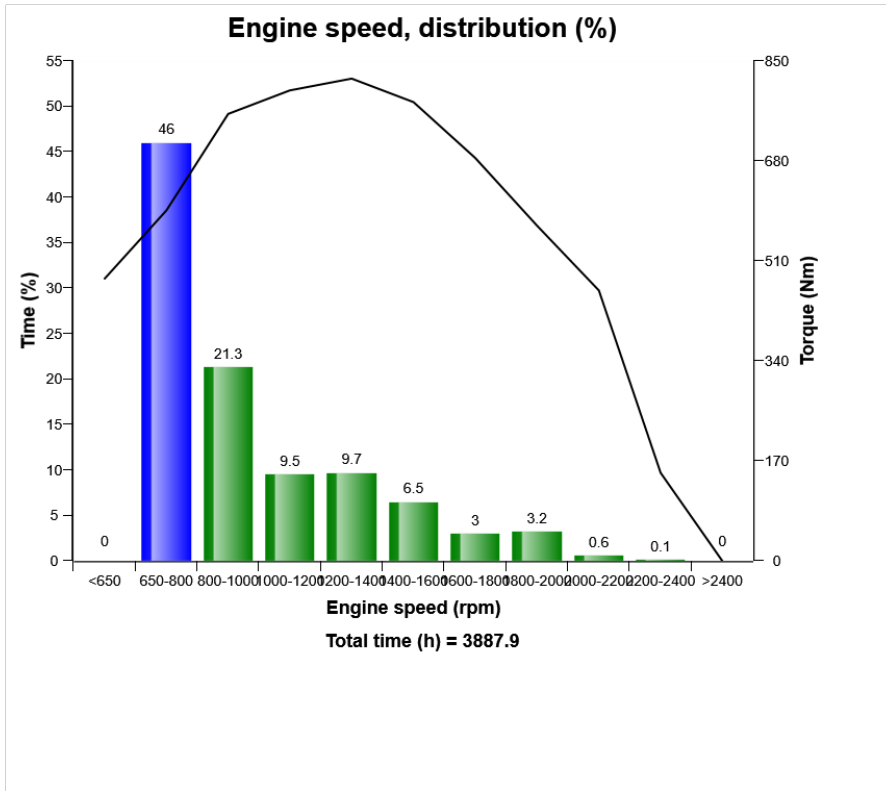
Machine model	SerialNo	Operating Hours	Reading Date
L60H	621283	3888.2	18/09/2019



Machine model	SerialNo	Operating Hours	Reading Date
L60H	621283	3888.2	18/09/2019



Machine model	SerialNo	Operating Hours	Reading Date
L60H	621283	3888.2	18/09/2019



Machine model L60H	SerialNo 621283	Operating Hours 3888.2	Reading Date 18/09/2019
-----------------------	--------------------	---------------------------	----------------------------

**Starter overheating  
Total number of occurrences = 0**

Op hours	Year	Month	Day	Hour	Minute
0	2000	0	0	0	0
0	2000	0	0	0	0
0	2000	0	0	0	0
0	2000	0	0	0	0
0	2000	0	0	0	0
0	2000	0	0	0	0
0	2000	0	0	0	0
0	2000	0	0	0	0
0	2000	0	0	0	0
0	2000	0	0	0	0
0	2000	0	0	0	0
0	2000	0	0	0	0
0	2000	0	0	0	0
0	2000	0	0	0	0
0	2000	0	0	0	0
0	2000	0	0	0	0
0	2000	0	0	0	0
0	2000	0	0	0	0
0	2000	0	0	0	0
0	2000	0	0	0	0
0	2000	0	0	0	0
0	2000	0	0	0	0
0	2000	0	0	0	0



Machine model	SerialNo	Operating Hours	Reading Date
L60H	621283	3888.2	18/09/2019

**Low engine oil level at start  
Total number of occurrences = 0**

Op hours	Year	Month	Day	Hour	Minute
* 0	2000	0	0	0	0
* 0	2000	0	0	0	0
* 0	2000	0	0	0	0
* 0	2000	0	0	0	0
* 0	2000	0	0	0	0
* 0	2000	0	0	0	0
* 0	2000	0	0	0	0
* 0	2000	0	0	0	0
* 0	2000	0	0	0	0
* 0	2000	0	0	0	0
* 0	2000	0	0	0	0
* 0	2000	0	0	0	0
* 0	2000	0	0	0	0
* 0	2000	0	0	0	0
* 0	2000	0	0	0	0
* 0	2000	0	0	0	0
* 0	2000	0	0	0	0
* 0	2000	0	0	0	0
* 0	2000	0	0	0	0
* 0	2000	0	0	0	0
* 0	2000	0	0	0	0
* 0	2000	0	0	0	0
* 0	2000	0	0	0	0
* 0	2000	0	0	0	0
* 0	2000	0	0	0	0
* 0	2000	0	0	0	0
* 0	2000	0	0	0	0



Machine model	SerialNo	Operating Hours	Reading Date
L60H	621283	3888.2	18/09/2019

**Low Engine Oil Pressure  
Total number of occurrences = 0**

	Op hours	Year	Month	Day	Hour	Minute	Duration (seconds)	Extreme (psi)
*	0	2000	0	0	0	0	0	0
*	0	2000	0	0	0	0	0	0
*	0	2000	0	0	0	0	0	0
*	0	2000	0	0	0	0	0	0
*	0	2000	0	0	0	0	0	0
*	0	2000	0	0	0	0	0	0
*	0	2000	0	0	0	0	0	0
*	0	2000	0	0	0	0	0	0
*	0	2000	0	0	0	0	0	0
*	0	2000	0	0	0	0	0	0
*	0	2000	0	0	0	0	0	0
*	0	2000	0	0	0	0	0	0
*	0	2000	0	0	0	0	0	0
*	0	2000	0	0	0	0	0	0
*	0	2000	0	0	0	0	0	0
*	0	2000	0	0	0	0	0	0
*	0	2000	0	0	0	0	0	0
*	0	2000	0	0	0	0	0	0
*	0	2000	0	0	0	0	0	0
*	0	2000	0	0	0	0	0	0
*	0	2000	0	0	0	0	0	0
*	0	2000	0	0	0	0	0	0
*	0	2000	0	0	0	0	0	0
*	0	2000	0	0	0	0	0	0



Machine model	SerialNo	Operating Hours	Reading Date
L60H	621283	3888.2	18/09/2019

**Low Air filter pressure**  
**Total number of occurrences = 0**

Op hours	Year	Month	Day	Hour	Minute	Duration (seconds)
0	2000	0	0	0	0	0
0	2000	0	0	0	0	0
0	2000	0	0	0	0	0
0	2000	0	0	0	0	0
0	2000	0	0	0	0	0
0	2000	0	0	0	0	0
0	2000	0	0	0	0	0
0	2000	0	0	0	0	0
0	2000	0	0	0	0	0
0	2000	0	0	0	0	0
0	2000	0	0	0	0	0
0	2000	0	0	0	0	0
0	2000	0	0	0	0	0
0	2000	0	0	0	0	0
0	2000	0	0	0	0	0
0	2000	0	0	0	0	0
0	2000	0	0	0	0	0
0	2000	0	0	0	0	0
0	2000	0	0	0	0	0
0	2000	0	0	0	0	0
0	2000	0	0	0	0	0
0	2000	0	0	0	0	0





Machine model L60H	SerialNo 621283	Operating Hours 3888.2	Reading Date 18/09/2019
-----------------------	--------------------	---------------------------	----------------------------

**Engine overspeed, duration  
Total number of occurrences = 0**

Op hours	Year	Month	Day	Hour	Minute	Duration (seconds)	Extreme value
0	2000	0	0	0	0	0	0
0	2000	0	0	0	0	0	0
0	2000	0	0	0	0	0	0
0	2000	0	0	0	0	0	0
0	2000	0	0	0	0	0	0
0	2000	0	0	0	0	0	0
0	2000	0	0	0	0	0	0
0	2000	0	0	0	0	0	0
0	2000	0	0	0	0	0	0
0	2000	0	0	0	0	0	0
0	2000	0	0	0	0	0	0
0	2000	0	0	0	0	0	0
0	2000	0	0	0	0	0	0
0	2000	0	0	0	0	0	0
0	2000	0	0	0	0	0	0
0	2000	0	0	0	0	0	0
0	2000	0	0	0	0	0	0
0	2000	0	0	0	0	0	0
0	2000	0	0	0	0	0	0
0	2000	0	0	0	0	0	0
0	2000	0	0	0	0	0	0
0	2000	0	0	0	0	0	0
0	2000	0	0	0	0	0	0
0	2000	0	0	0	0	0	0
0	2000	0	0	0	0	0	0
0	2000	0	0	0	0	0	0
0	2000	0	0	0	0	0	0
0	2000	0	0	0	0	0	0
0	2000	0	0	0	0	0	0
0	2000	0	0	0	0	0	0
0	2000	0	0	0	0	0	0
0	2000	0	0	0	0	0	0
0	2000	0	0	0	0	0	0
0	2000	0	0	0	0	0	0
0	2000	0	0	0	0	0	0
0	2000	0	0	0	0	0	0
0	2000	0	0	0	0	0	0
0	2000	0	0	0	0	0	0
0	2000	0	0	0	0	0	0



Machine model	SerialNo	Operating Hours	Reading Date
L60H	621283	3888.2	18/09/2019

**Regeneration aborted**  
**Total number of occurrences = 37228**

Op hours	Year	Month	Day	Hour	Minute	Reason
* 3835	2019	8	12	8	29	0
* 3835	2019	8	12	8	29	0
* 3835	2019	8	12	8	29	0
* 3835	2019	8	12	8	29	0
* 3835	2019	8	12	8	29	0
* 3835	2019	8	12	8	29	0
* 3835	2019	8	12	8	29	0
* 3835	2019	8	12	8	29	0
* 3835	2019	8	12	8	29	0
* 3835	2019	8	12	8	29	0
* 3835	2019	8	12	8	29	0
* 3835	2019	8	12	8	29	0
* 3835	2019	8	12	8	29	0
* 3835	2019	8	12	8	29	0
* 3835	2019	8	12	8	29	0
* 3835	2019	8	12	8	29	0
* 3835	2019	8	12	8	29	0
* 3835	2019	8	12	8	29	0
* 3835	2019	8	12	8	29	0
* 3835	2019	8	12	8	29	0
* 3835	2019	8	12	8	29	0
* 3835	2019	8	12	8	29	0
* 3835	2019	8	12	8	29	0
* 3835	2019	8	12	8	29	0
* 3835	2019	8	12	8	29	0



Machine model	SerialNo	Operating Hours	Reading Date
L60H	621283	3888.2	18/09/2019

**Regeneration ignored**  
**Total number of occurrences = 39**

Op hours	Year	Month	Day	Hour	Minute	Duration (min)
* 945	2018	2	14	8	4	10
* 945	2018	2	14	7	19	44
* 1233	2018	4	5	11	23	36
* 1234	2018	4	5	12	1	10
* 1349	2018	4	25	8	30	40
* 1350	2018	4	25	9	11	10
* 1458	2018	5	16	7	26	46
* 2011	2018	8	22	12	55	133
* 2013	2018	8	23	6	56	55
* 2566	2018	11	29	12	29	151
* 2566	2018	11	29	11	44	29
* 2569	2018	11	30	7	18	94
* 2880	2019	2	5	10	4	94
* 2882	2019	2	5	11	40	10
* 3275	2019	4	30	7	40	170
* 3278	2019	4	30	10	31	10
* 3831	2019	8	10	11	32	172
* 3834	2019	8	12	2	46	3
* 3834	2019	8	12	3	53	2
* 3834	2019	8	12	7	28	61



Machine model	SerialNo	Operating Hours	Reading Date
L60H	621283	3888.2	18/09/2019

**Regeneration duration**  
**Total number of occurrences = 22**

Op hours	Year	Month	Day	Hour	Minute	Duration (min)
* 742	2018	1	10	8	53	4
* 742	2018	1	10	9	10	19
* 743	2018	1	10	9	30	10
* 744	2018	1	10	10	34	28
* 746	2018	1	10	13	7	15
* 748	2018	1	11	6	19	19
* 750	2018	1	11	8	4	4
* 752	2018	1	11	9	45	2
* 756	2018	1	11	14	9	2
* 757	2018	1	12	6	3	45
* 945	2018	2	14	7	29	45
* 1233	2018	4	5	11	26	45
* 1349	2018	4	25	8	37	45
* 1458	2018	5	16	7	27	46
* 2014	2018	8	23	7	5	45
* 2569	2018	11	30	7	32	22
* 2570	2018	11	30	8	7	45
* 2881	2019	2	5	11	5	45
* 3277	2019	4	30	9	57	45
* 3834	2019	8	12	7	44	45



Machine model	SerialNo	Operating Hours	Reading Date
L60H	621283	3888.2	18/09/2019

**High engine coolant temperature  
Total number of occurrences = 0**

Op hours	Year	Month	Day	Hour	Minute	Duration (seconds)	Extreme (° F)
0	2000	0	0	0	0	0	32
0	2000	0	0	0	0	0	32
0	2000	0	0	0	0	0	32
0	2000	0	0	0	0	0	32
0	2000	0	0	0	0	0	32
0	2000	0	0	0	0	0	32
0	2000	0	0	0	0	0	32
0	2000	0	0	0	0	0	32
0	2000	0	0	0	0	0	32
0	2000	0	0	0	0	0	32
0	2000	0	0	0	0	0	32
0	2000	0	0	0	0	0	32
0	2000	0	0	0	0	0	32
0	2000	0	0	0	0	0	32
0	2000	0	0	0	0	0	32
0	2000	0	0	0	0	0	32
0	2000	0	0	0	0	0	32
0	2000	0	0	0	0	0	32
0	2000	0	0	0	0	0	32
0	2000	0	0	0	0	0	32
0	2000	0	0	0	0	0	32
0	2000	0	0	0	0	0	32
0	2000	0	0	0	0	0	32
0	2000	0	0	0	0	0	32
0	2000	0	0	0	0	0	32
0	2000	0	0	0	0	0	32
0	2000	0	0	0	0	0	32



Machine model	SerialNo	Operating Hours	Reading Date
L60H	621283	3888.2	18/09/2019

**Water level warning in water separator**  
**Total number of occurrences = 3**

Op hours	Year	Month	Day	Hour	Minute	Duration (min)
* 0	2000	0	0	0	0	0
* 0	2000	0	0	0	0	0
* 0	2000	0	0	0	0	0
* 0	2000	0	0	0	0	0
* 0	2000	0	0	0	0	0
* 0	2000	0	0	0	0	0
* 0	2000	0	0	0	0	0
* 0	2000	0	0	0	0	0
* 0	2000	0	0	0	0	0
* 0	2000	0	0	0	0	0
* 0	2000	0	0	0	0	0
* 0	2000	0	0	0	0	0
* 0	2000	0	0	0	0	0
* 0	2000	0	0	0	0	0
* 0	2000	0	0	0	0	0
* 0	2000	0	0	0	0	0
* 0	2000	0	0	0	0	0
* 0	2000	0	0	0	0	0
* 0	2000	0	0	0	0	0
* 0	2000	0	0	0	0	0
* 3547	2019	6	15	9	27	245
* 3551	2019	6	15	13	37	7
* 3665	2019	7	10	11	33	0



Machine model	SerialNo	Operating Hours	Reading Date
L60H	621283	3888.2	18/09/2019

**High voltage**  
**Total number of occurrences = 0**

Op hours	Year	Month	Day	Hour	Minute	Duration (seconds)	Extreme value
0	2000	0	0	0	0	0	0
0	2000	0	0	0	0	0	0
0	2000	0	0	0	0	0	0
0	2000	0	0	0	0	0	0
0	2000	0	0	0	0	0	0
0	2000	0	0	0	0	0	0
0	2000	0	0	0	0	0	0
0	2000	0	0	0	0	0	0
0	2000	0	0	0	0	0	0
0	2000	0	0	0	0	0	0
0	2000	0	0	0	0	0	0
0	2000	0	0	0	0	0	0
0	2000	0	0	0	0	0	0
0	2000	0	0	0	0	0	0
0	2000	0	0	0	0	0	0
0	2000	0	0	0	0	0	0
0	2000	0	0	0	0	0	0
0	2000	0	0	0	0	0	0
0	2000	0	0	0	0	0	0
0	2000	0	0	0	0	0	0
0	2000	0	0	0	0	0	0
0	2000	0	0	0	0	0	0
0	2000	0	0	0	0	0	0
0	2000	0	0	0	0	0	0
0	2000	0	0	0	0	0	0



Machine model	SerialNo	Operating Hours	Reading Date
L60H	621283	3888.2	18/09/2019

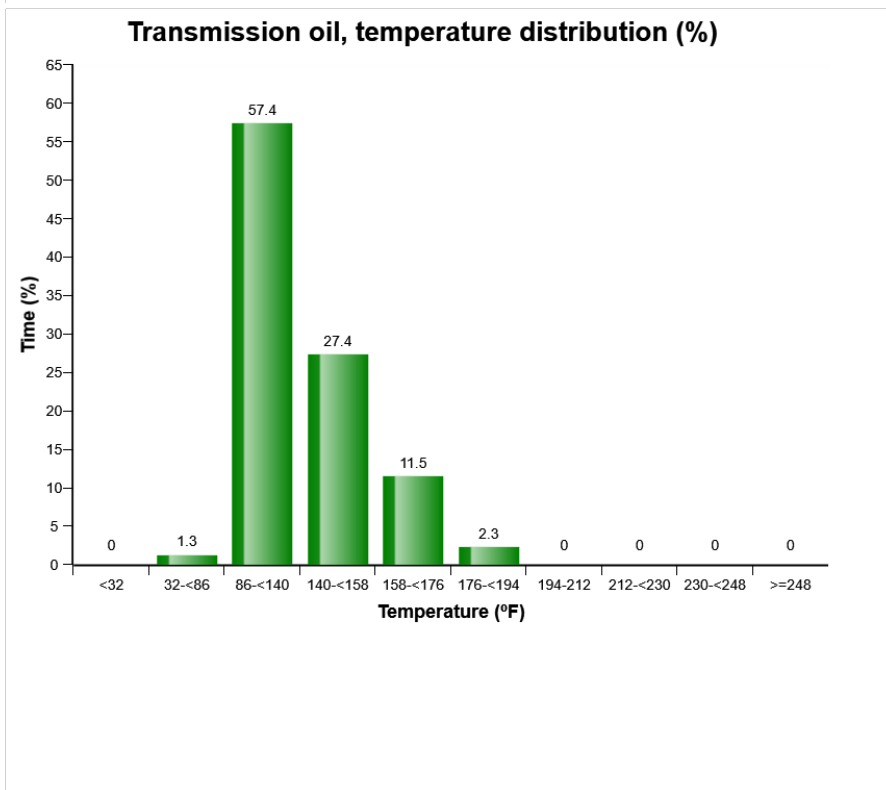
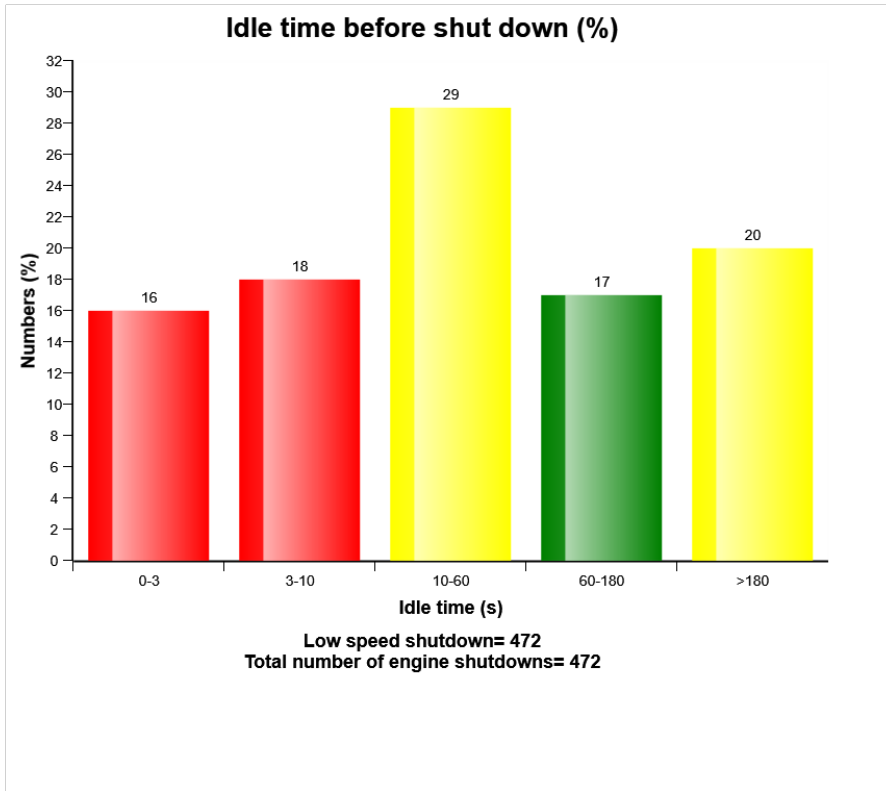
**Low voltage**  
**Total number of occurrences = 0**

<b>Op hours</b>	<b>Year</b>	<b>Month</b>	<b>Day</b>	<b>Hour</b>	<b>Minute</b>	<b>Duration (seconds)</b>	<b>Extreme value</b>
0	2000	0	0	0	0	0	0
0	2000	0	0	0	0	0	0
0	2000	0	0	0	0	0	0
0	2000	0	0	0	0	0	0
0	2000	0	0	0	0	0	0
0	2000	0	0	0	0	0	0
0	2000	0	0	0	0	0	0
0	2000	0	0	0	0	0	0
0	2000	0	0	0	0	0	0
0	2000	0	0	0	0	0	0
0	2000	0	0	0	0	0	0
0	2000	0	0	0	0	0	0
0	2000	0	0	0	0	0	0
0	2000	0	0	0	0	0	0
0	2000	0	0	0	0	0	0
0	2000	0	0	0	0	0	0
0	2000	0	0	0	0	0	0
0	2000	0	0	0	0	0	0
0	2000	0	0	0	0	0	0
0	2000	0	0	0	0	0	0
0	2000	0	0	0	0	0	0
0	2000	0	0	0	0	0	0
0	2000	0	0	0	0	0	0

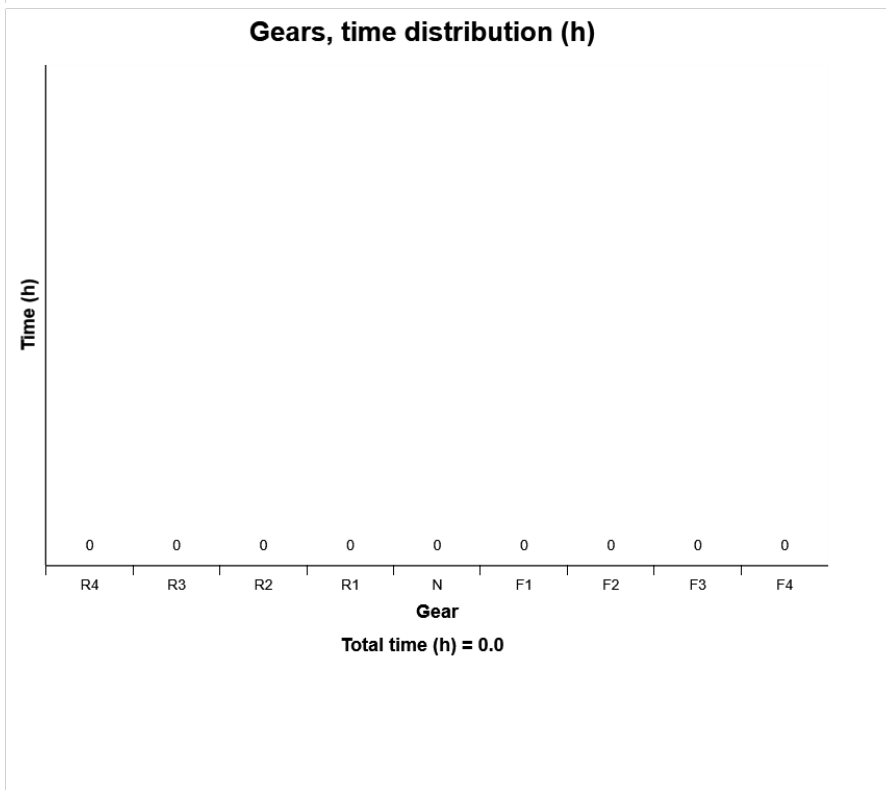
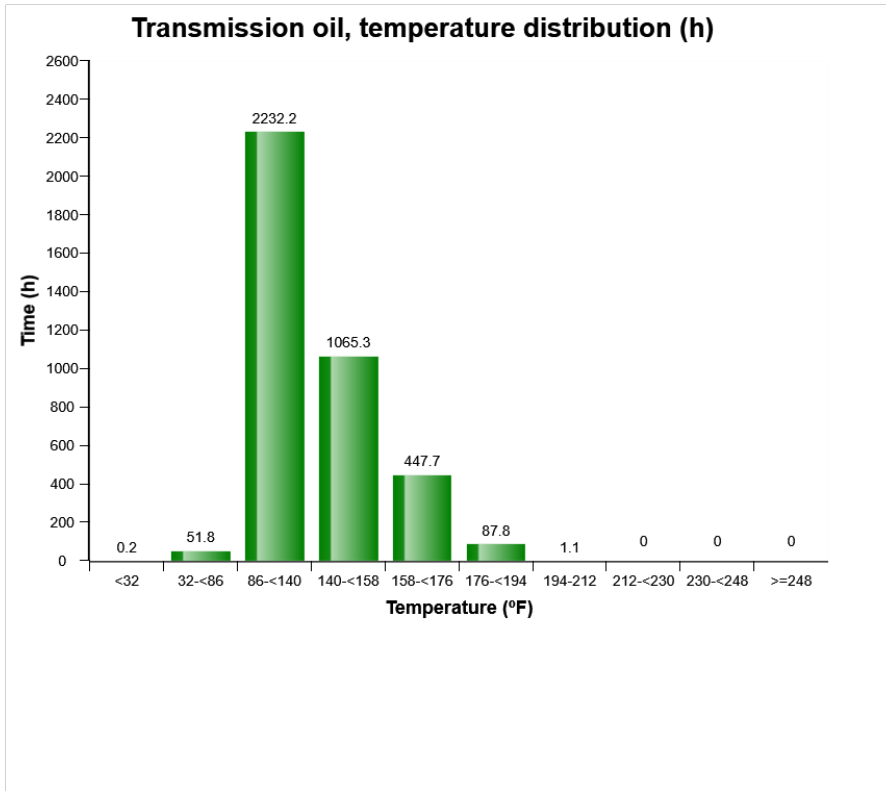




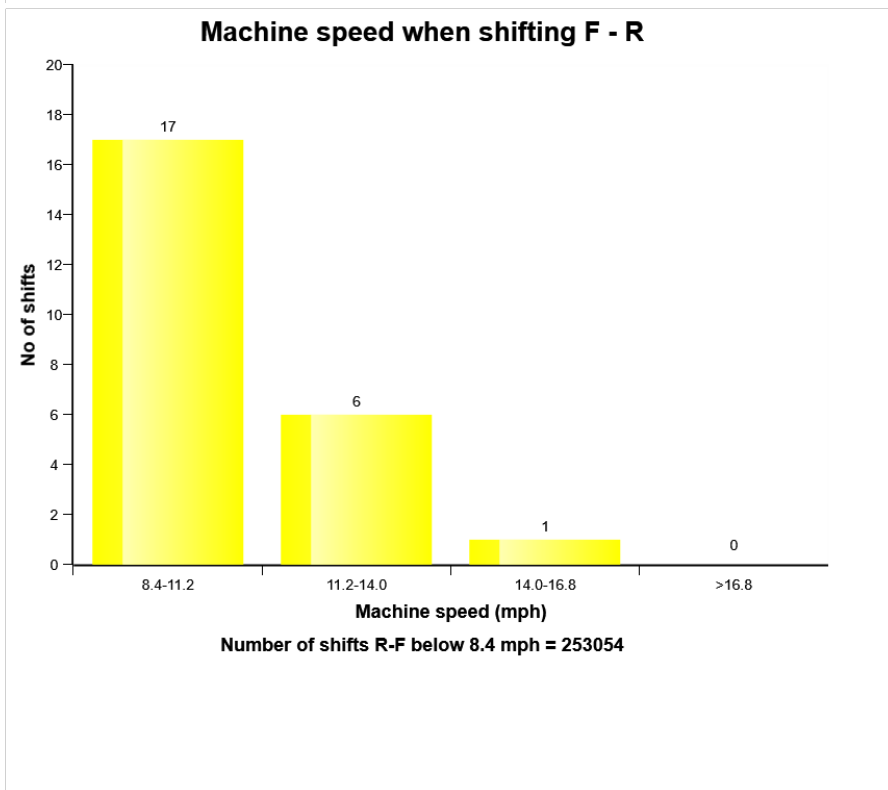
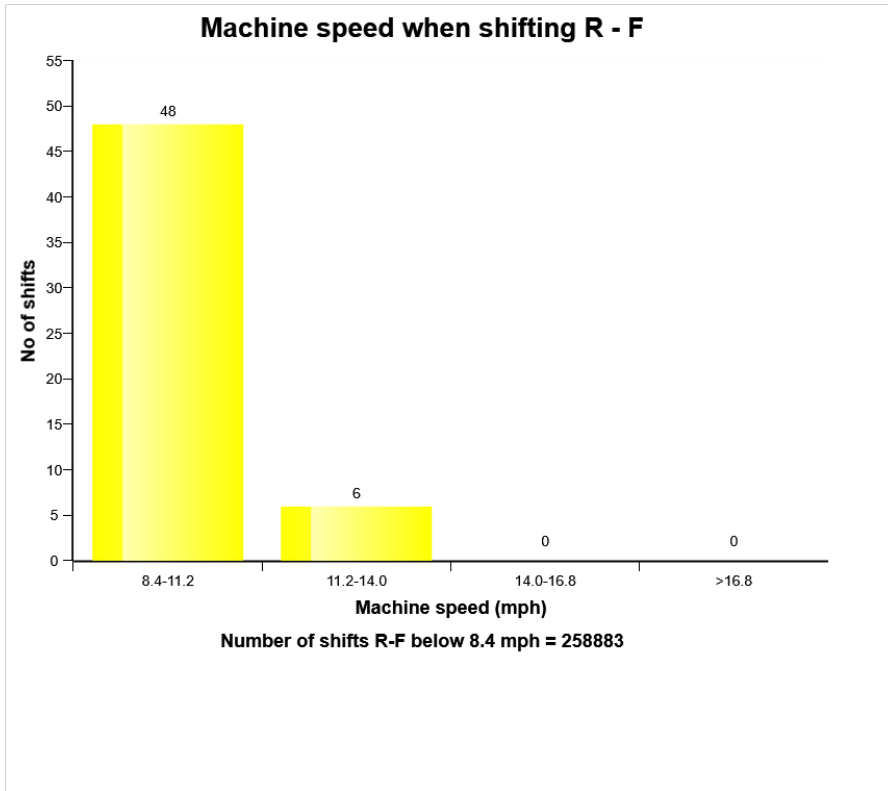
Machine model	SerialNo	Operating Hours	Reading Date
L60H	621283	3888.2	18/09/2019



Machine model	SerialNo	Operating Hours	Reading Date
L60H	621283	3888.2	18/09/2019



Machine model	SerialNo	Operating Hours	Reading Date
L60H	621283	3888.2	18/09/2019



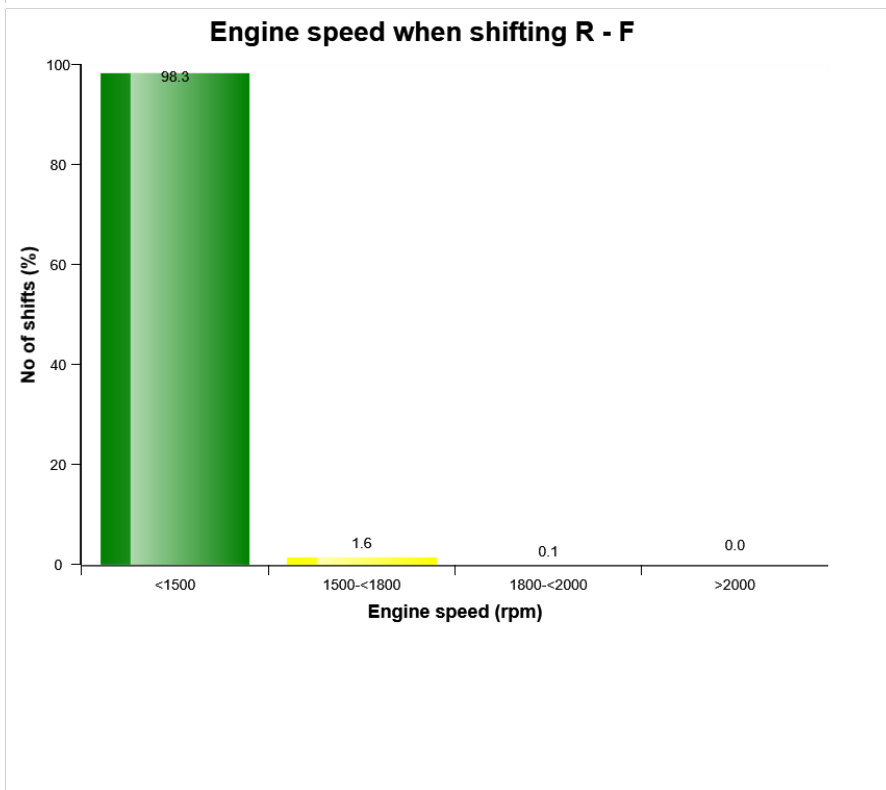
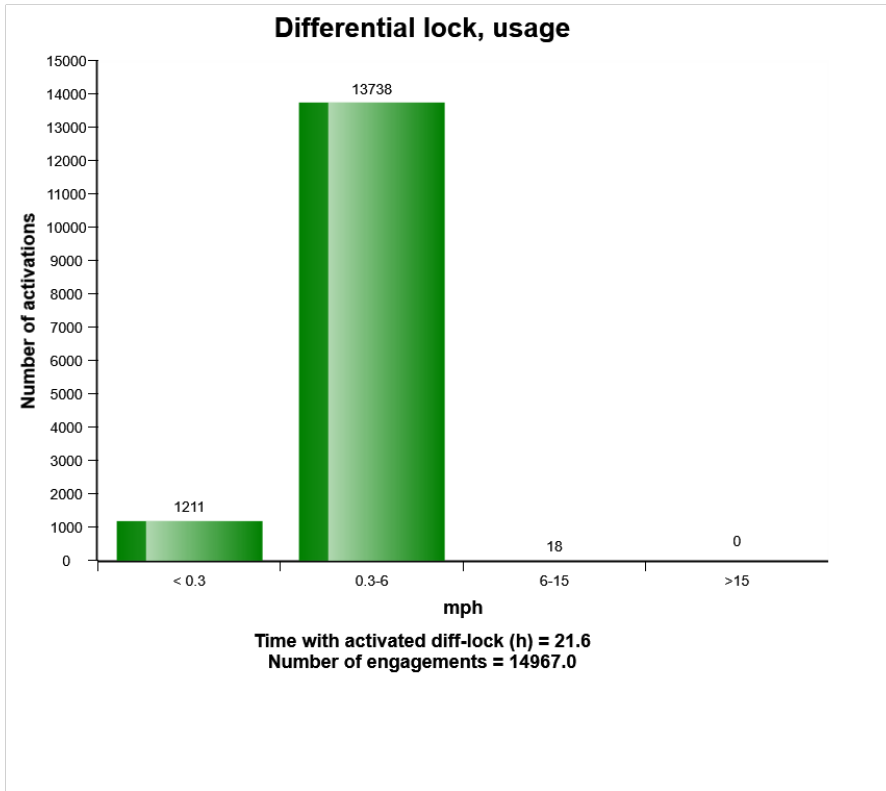
Machine model	SerialNo	Operating Hours	Reading Date
L60H	621283	3888.2	18/09/2019

**Transmission oil temperature high**  
**Total number of occurences = 0**

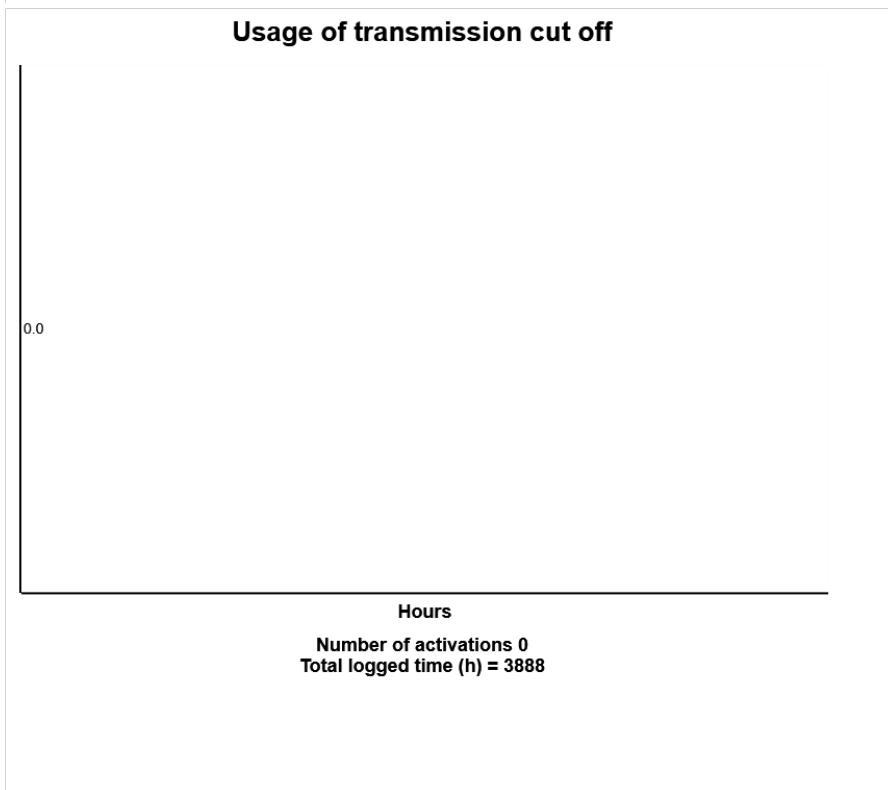
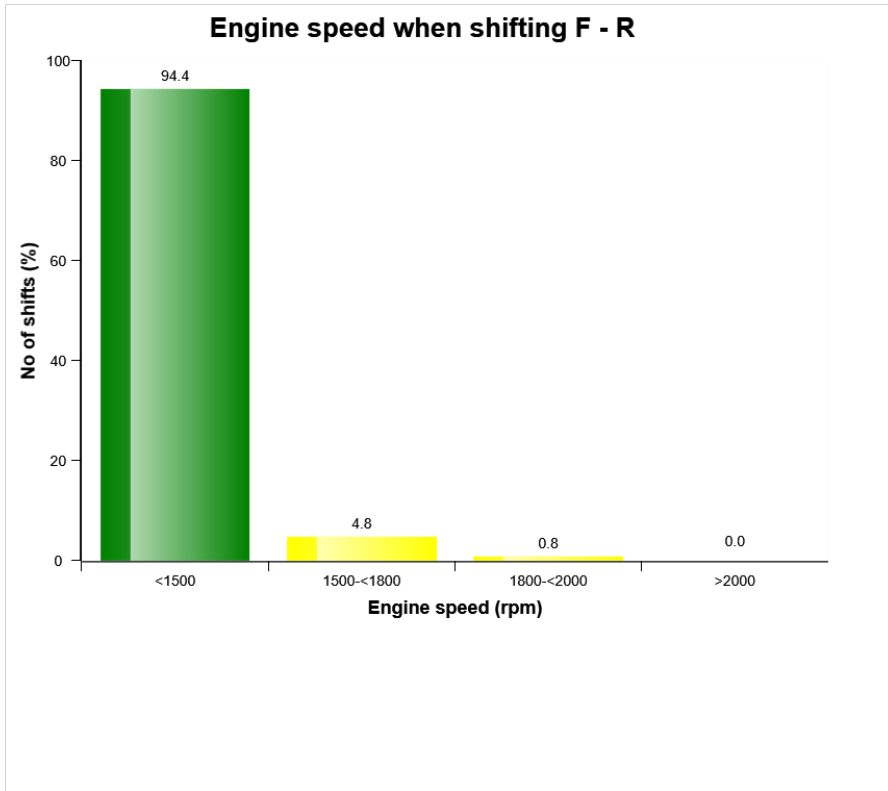
Op hours	Year	Month	Day	Hour	Minute	Duration (seconds)	Extreme (° F)
0	2000	0	0	0	0	0	32
0	2000	0	0	0	0	0	32
0	2000	0	0	0	0	0	32
0	2000	0	0	0	0	0	32
0	2000	0	0	0	0	0	32
0	2000	0	0	0	0	0	32
0	2000	0	0	0	0	0	32
0	2000	0	0	0	0	0	32
0	2000	0	0	0	0	0	32
0	2000	0	0	0	0	0	32
0	2000	0	0	0	0	0	32
0	2000	0	0	0	0	0	32
0	2000	0	0	0	0	0	32
0	2000	0	0	0	0	0	32
0	2000	0	0	0	0	0	32
0	2000	0	0	0	0	0	32
0	2000	0	0	0	0	0	32
0	2000	0	0	0	0	0	32
0	2000	0	0	0	0	0	32
0	2000	0	0	0	0	0	32
0	2000	0	0	0	0	0	32
0	2000	0	0	0	0	0	32
0	2000	0	0	0	0	0	32
0	2000	0	0	0	0	0	32
0	2000	0	0	0	0	0	32
0	2000	0	0	0	0	0	32
0	2000	0	0	0	0	0	32
0	2000	0	0	0	0	0	32
0	2000	0	0	0	0	0	32
0	2000	0	0	0	0	0	32
0	2000	0	0	0	0	0	32
0	2000	0	0	0	0	0	32
0	2000	0	0	0	0	0	32
0	2000	0	0	0	0	0	32
0	2000	0	0	0	0	0	32



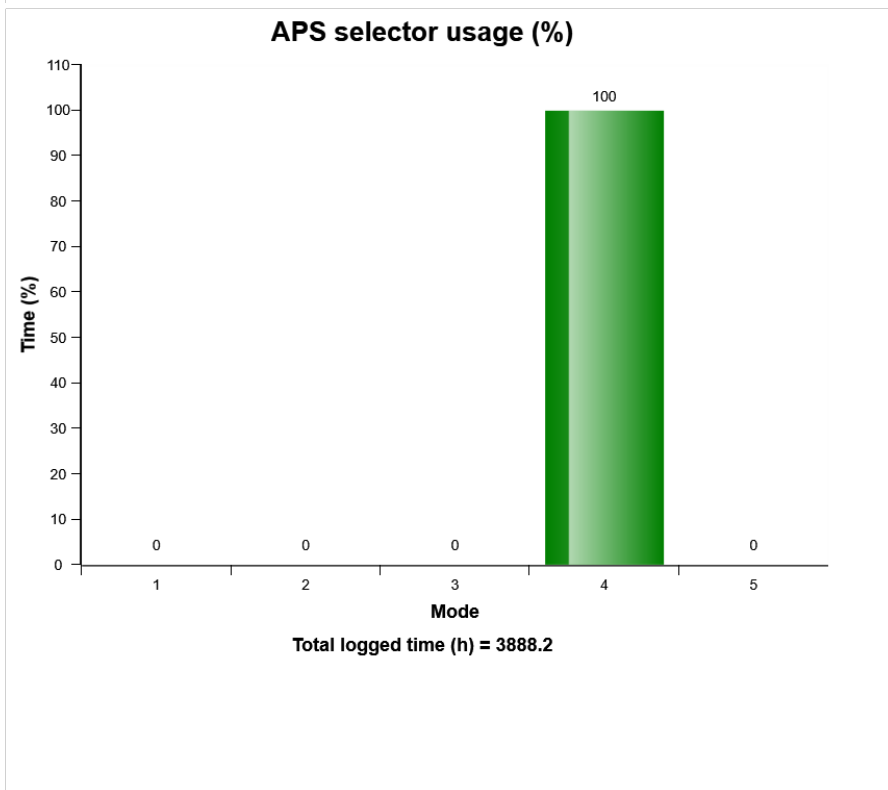
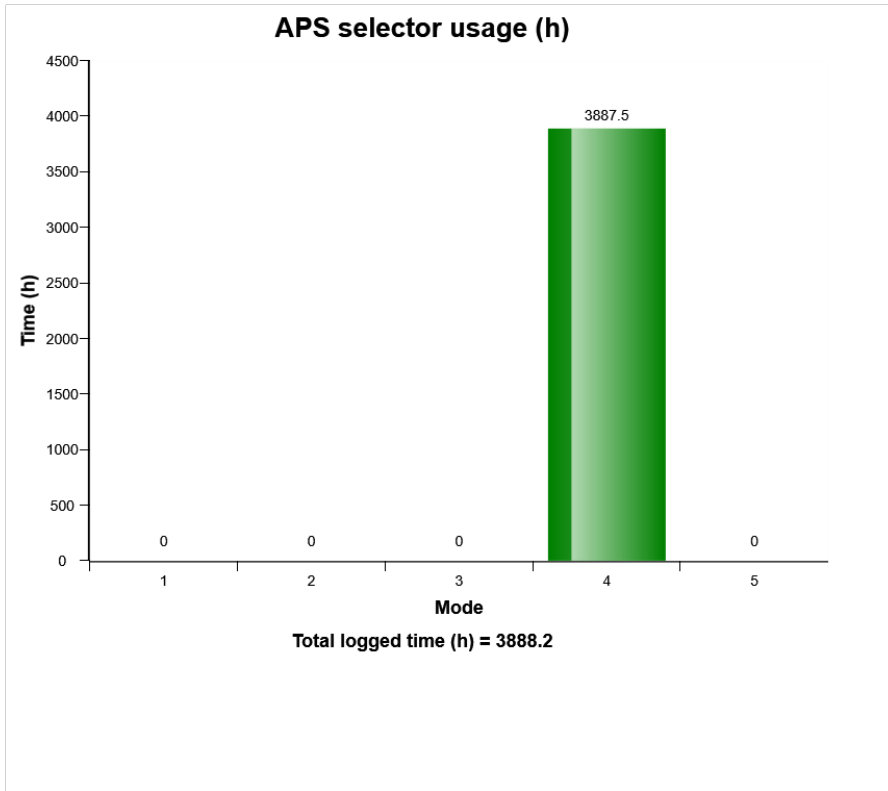
Machine model	SerialNo	Operating Hours	Reading Date
L60H	621283	3888.2	18/09/2019



Machine model	SerialNo	Operating Hours	Reading Date
L60H	621283	3888.2	18/09/2019



Machine model	SerialNo	Operating Hours	Reading Date
L60H	621283	3888.2	18/09/2019



Machine model	SerialNo	Operating Hours	Reading Date
L60H	621283	3888.2	18/09/2019

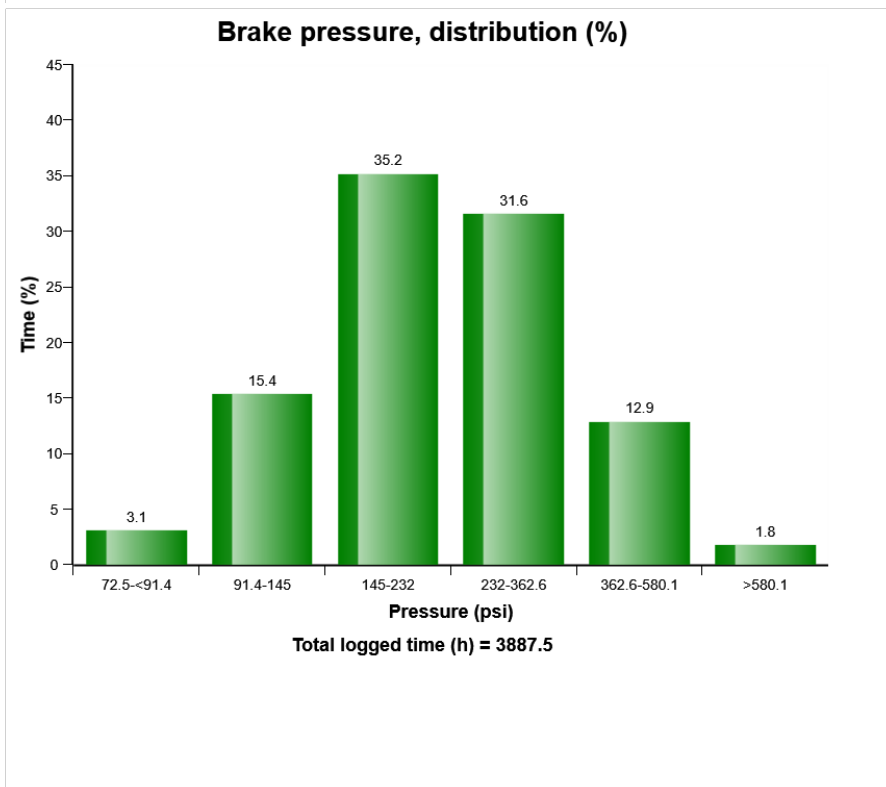
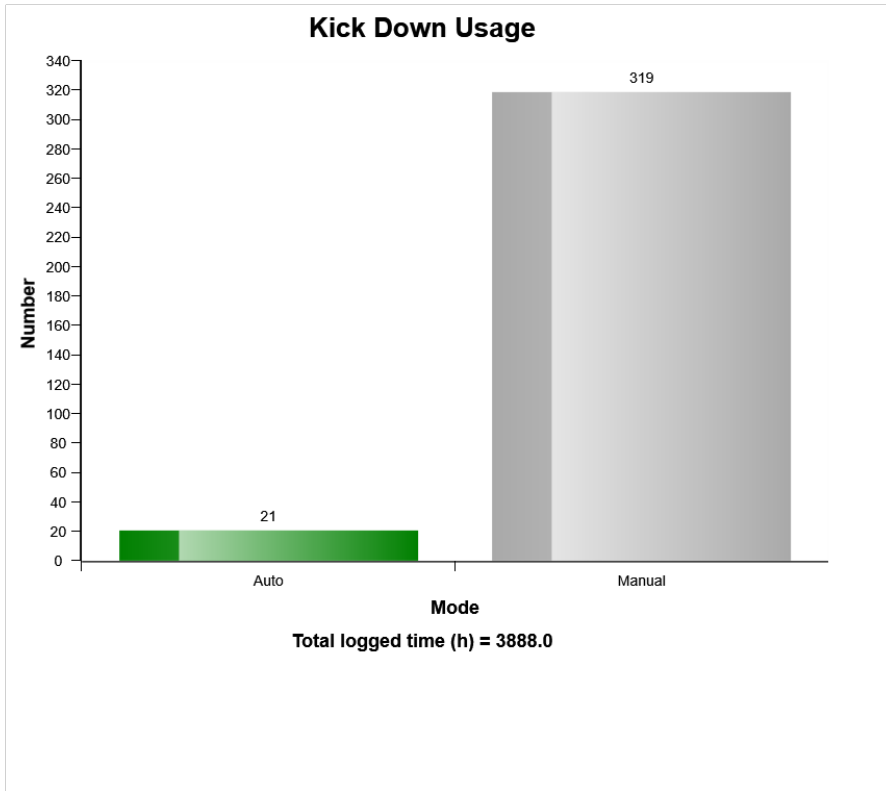
**Transmission oil pressure low**  
**Total number of occurrences = 0**

0	Year	Month	Day	Hour	Minute	Duration (seconds)	Extreme (psi)
0	2000	0	0	0	0	0	0
0	2000	0	0	0	0	0	0
0	2000	0	0	0	0	0	0
0	2000	0	0	0	0	0	0
0	2000	0	0	0	0	0	0
0	2000	0	0	0	0	0	0
0	2000	0	0	0	0	0	0
0	2000	0	0	0	0	0	0
0	2000	0	0	0	0	0	0
0	2000	0	0	0	0	0	0
0	2000	0	0	0	0	0	0
0	2000	0	0	0	0	0	0
0	2000	0	0	0	0	0	0
0	2000	0	0	0	0	0	0
0	2000	0	0	0	0	0	0
0	2000	0	0	0	0	0	0
0	2000	0	0	0	0	0	0
0	2000	0	0	0	0	0	0
0	2000	0	0	0	0	0	0
0	2000	0	0	0	0	0	0

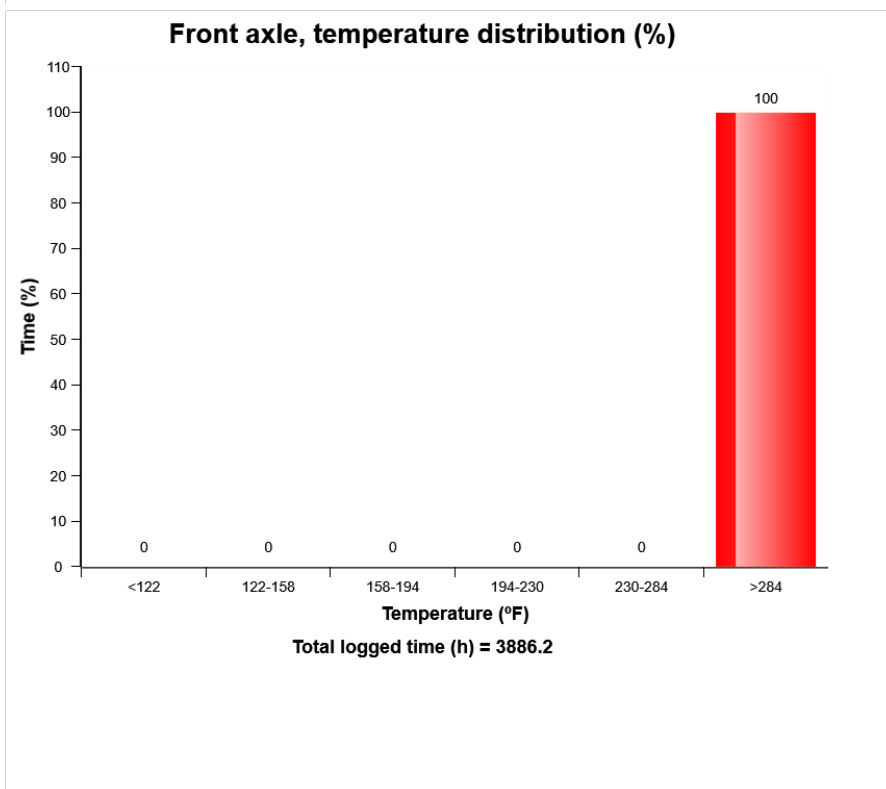
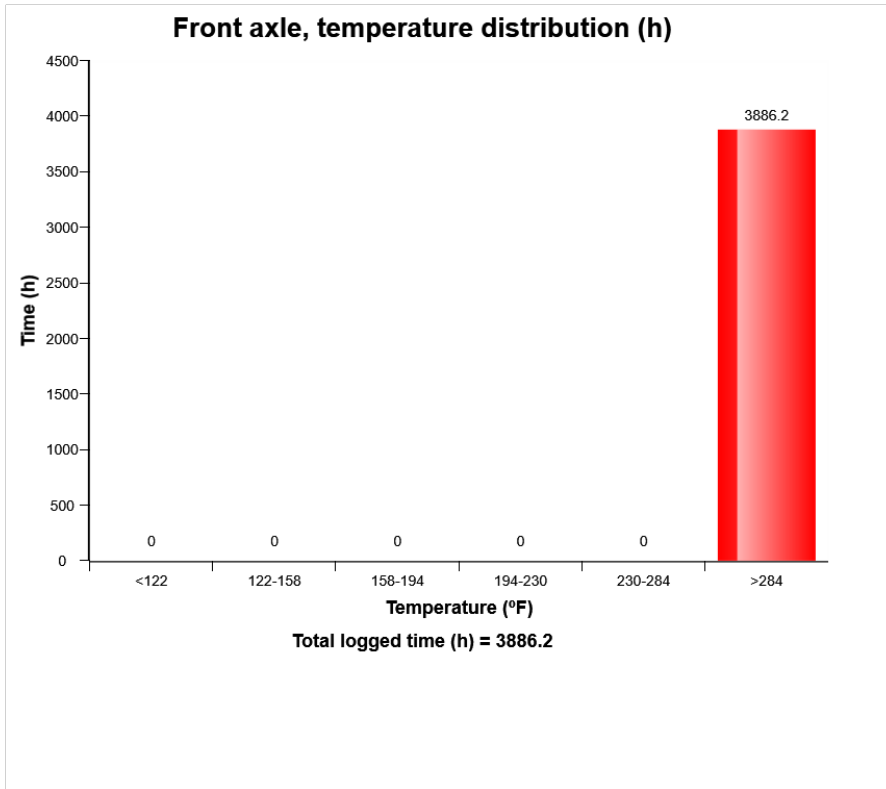




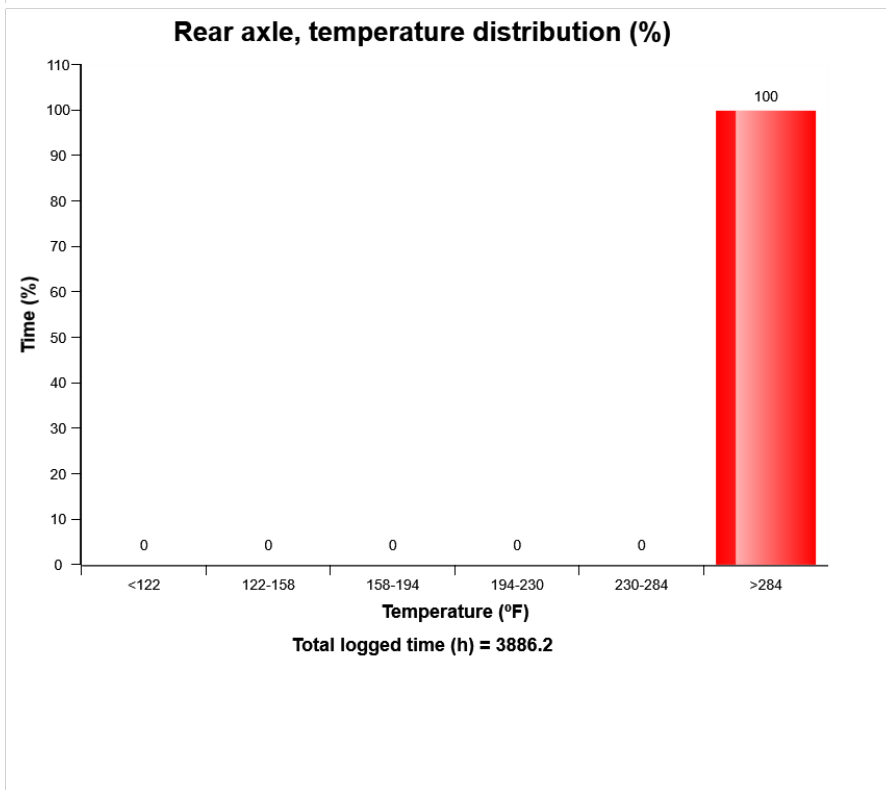
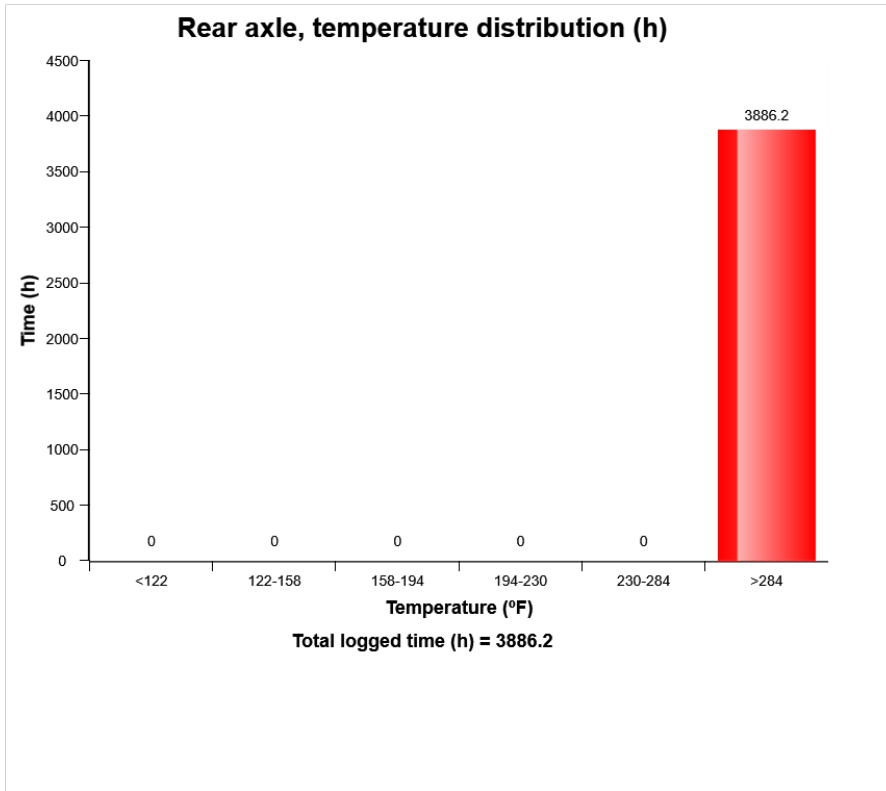
Machine model	SerialNo	Operating Hours	Reading Date
L60H	621283	3888.2	18/09/2019



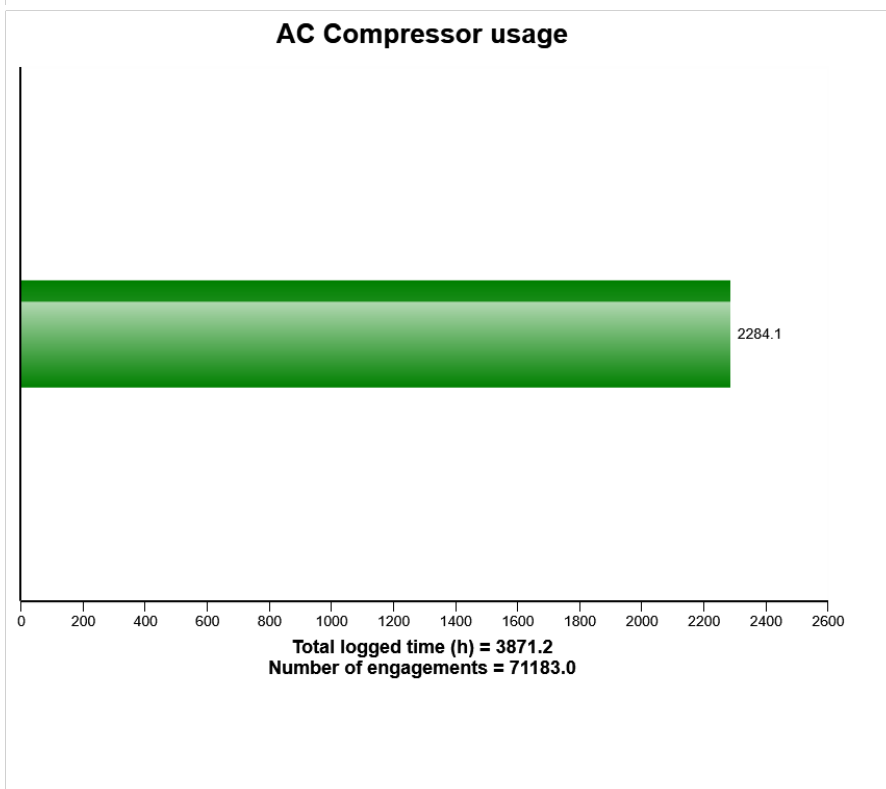
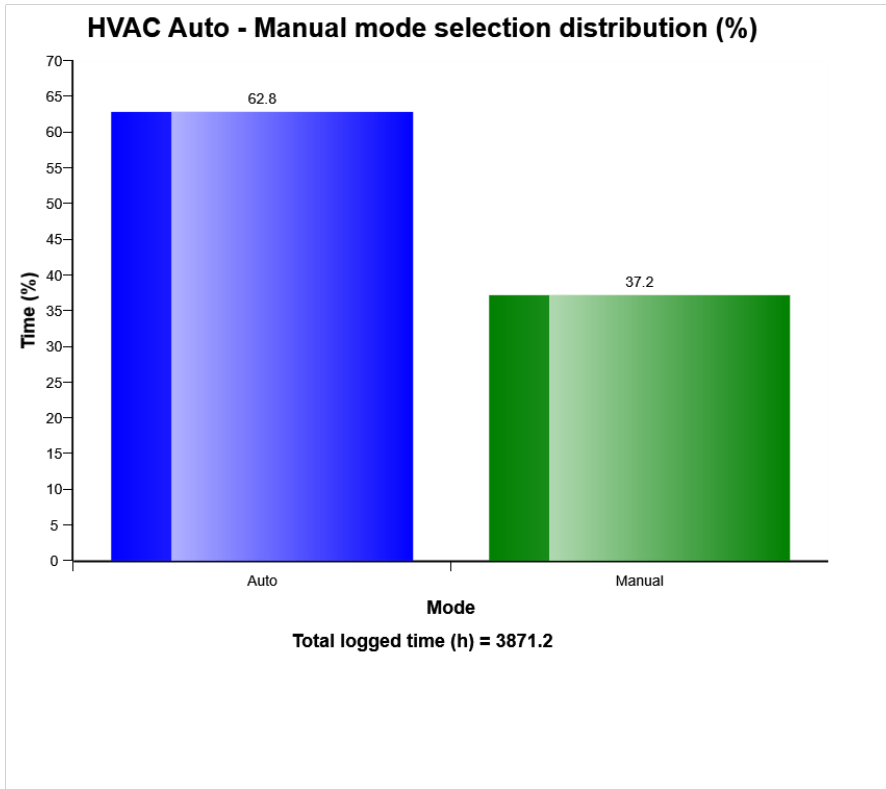
Machine model	SerialNo	Operating Hours	Reading Date
L60H	621283	3888.2	18/09/2019



Machine model	SerialNo	Operating Hours	Reading Date
L60H	621283	3888.2	18/09/2019

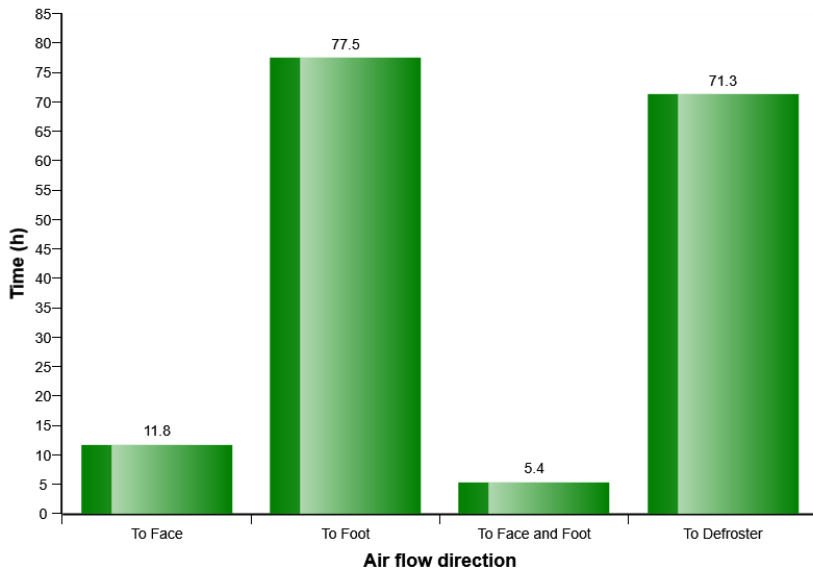


Machine model	SerialNo	Operating Hours	Reading Date
L60H	621283	3888.2	18/09/2019

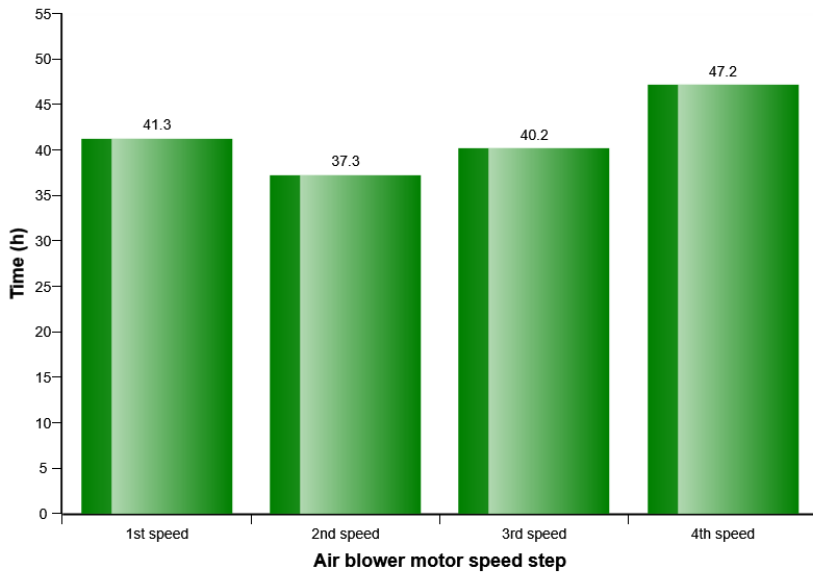


Machine model	SerialNo	Operating Hours	Reading Date
L60H	621283	3888.2	18/09/2019

**HVAC air flow direction in manual mode distribution (h)**



**HVAC air blower motor speed in manual mode distribution (h)**



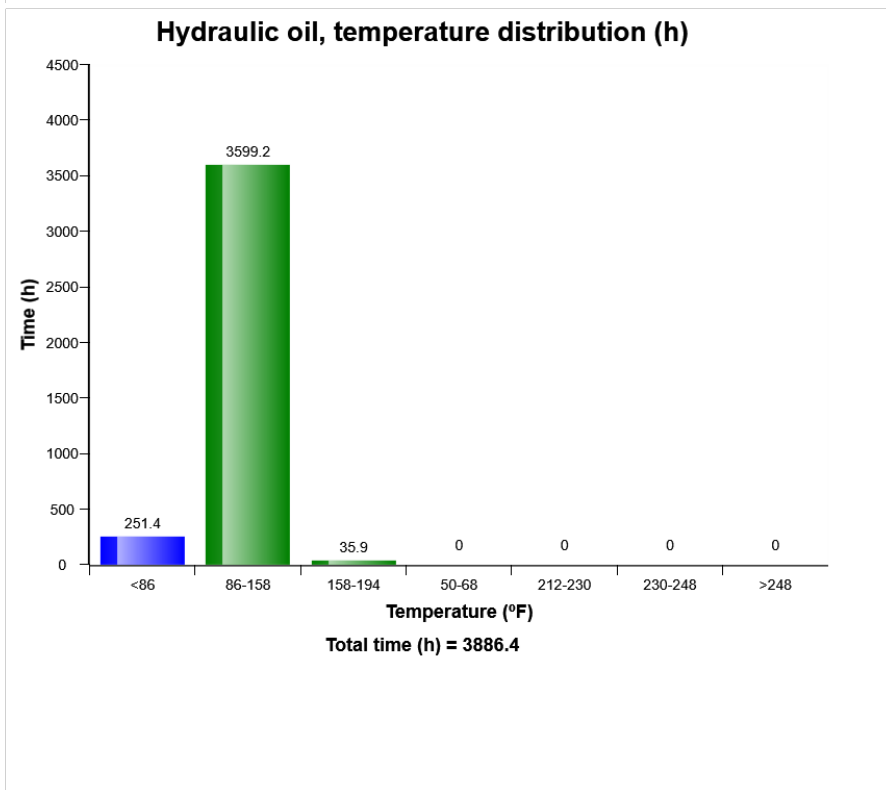
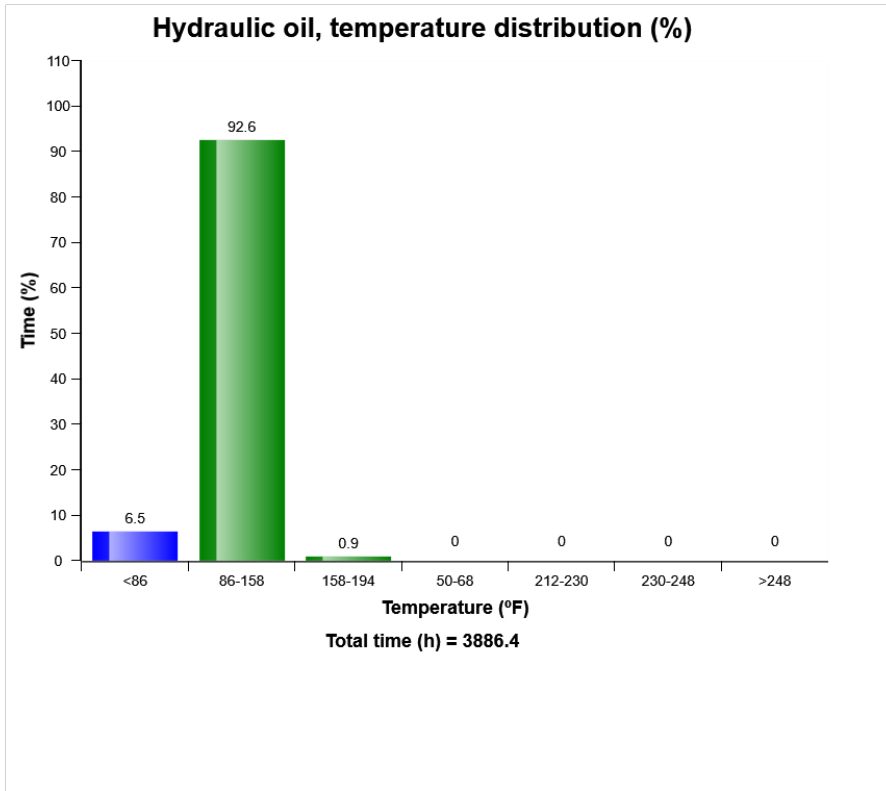
Machine model	SerialNo	Operating Hours	Reading Date
L60H	621283	3888.2	18/09/2019

**AC High Pressure**  
**Total number of occurrences = 0**

Op hours	Year	Month	Day	Hour	Minute	Duration (seconds)	Ambient temperature (°F)
0	2000	0	0	0	0	0	32
0	2000	0	0	0	0	0	32
0	2000	0	0	0	0	0	32
0	2000	0	0	0	0	0	32
0	2000	0	0	0	0	0	32
0	2000	0	0	0	0	0	32
0	2000	0	0	0	0	0	32
0	2000	0	0	0	0	0	32
0	2000	0	0	0	0	0	32
0	2000	0	0	0	0	0	32
0	2000	0	0	0	0	0	32
0	2000	0	0	0	0	0	32
0	2000	0	0	0	0	0	32
0	2000	0	0	0	0	0	32
0	2000	0	0	0	0	0	32
0	2000	0	0	0	0	0	32
0	2000	0	0	0	0	0	32
0	2000	0	0	0	0	0	32
0	2000	0	0	0	0	0	32
0	2000	0	0	0	0	0	32
0	2000	0	0	0	0	0	32
0	2000	0	0	0	0	0	32
0	2000	0	0	0	0	0	32
0	2000	0	0	0	0	0	32
0	2000	0	0	0	0	0	32
0	2000	0	0	0	0	0	32



Machine model	SerialNo	Operating Hours	Reading Date
L60H	621283	3888.2	18/09/2019



Machine model	SerialNo	Operating Hours	Reading Date
L60H	621283	3888.2	18/09/2019

**High hydraulic oil temperature  
Total number of occurrences = 0**

Op hours	Year	Month	Day	Hour	Minute	Duration (seconds)	Extreme (° F)
0	2000	0	0	0	0	0	32
0	2000	0	0	0	0	0	32
0	2000	0	0	0	0	0	32
0	2000	0	0	0	0	0	32
0	2000	0	0	0	0	0	32
0	2000	0	0	0	0	0	32
0	2000	0	0	0	0	0	32
0	2000	0	0	0	0	0	32
0	2000	0	0	0	0	0	32
0	2000	0	0	0	0	0	32
0	2000	0	0	0	0	0	32
0	2000	0	0	0	0	0	32
0	2000	0	0	0	0	0	32
0	2000	0	0	0	0	0	32
0	2000	0	0	0	0	0	32
0	2000	0	0	0	0	0	32
0	2000	0	0	0	0	0	32
0	2000	0	0	0	0	0	32
0	2000	0	0	0	0	0	32
0	2000	0	0	0	0	0	32
0	2000	0	0	0	0	0	32
0	2000	0	0	0	0	0	32
0	2000	0	0	0	0	0	32





Machine model	SerialNo	Operating Hours	Reading Date
L60H	621283	3888.2	18/09/2019

**Low Hydraulic Oil Level**  
**Total number of occurrences = 0**

Op hours	Year	Month	Day	Hour	Minute	Duration (seconds)
0	2000	0	0	0	0	0
0	2000	0	0	0	0	0
0	2000	0	0	0	0	0
0	2000	0	0	0	0	0
0	2000	0	0	0	0	0
0	2000	0	0	0	0	0
0	2000	0	0	0	0	0
0	2000	0	0	0	0	0
0	2000	0	0	0	0	0
0	2000	0	0	0	0	0
0	2000	0	0	0	0	0
0	2000	0	0	0	0	0
0	2000	0	0	0	0	0
0	2000	0	0	0	0	0
0	2000	0	0	0	0	0
0	2000	0	0	0	0	0
0	2000	0	0	0	0	0
0	2000	0	0	0	0	0
0	2000	0	0	0	0	0
0	2000	0	0	0	0	0
0	2000	0	0	0	0	0
0	2000	0	0	0	0	0
0	2000	0	0	0	0	0
0	2000	0	0	0	0	0
0	2000	0	0	0	0	0
0	2000	0	0	0	0	0

