

VOLVO CONSTRUCTION EQUIPMENT MATRIS REPORT

Machine model L110H	SerialNo 10261	Operating Hours 5666.7	Reading Date 09/12/2019
Company name Asset Appraisal Service	Dealer	Report Issuer	
Contact name	Technician mgaskill	Primary Application Log handling	
Site	Workorder	Ground Condition	

MATRIS Reading, Summary / Recommendation

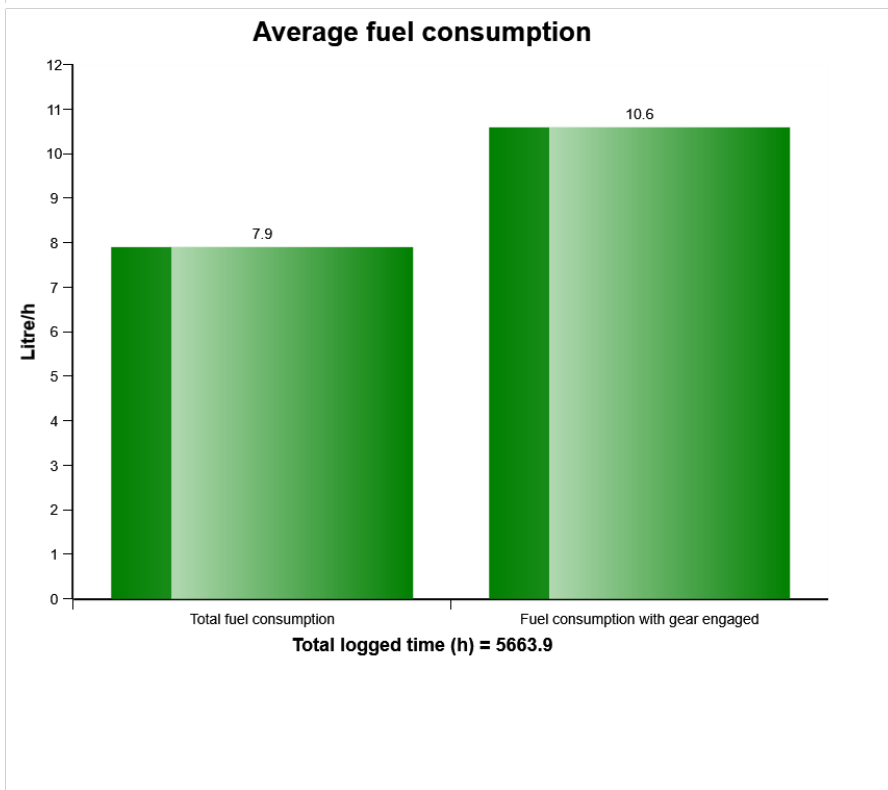
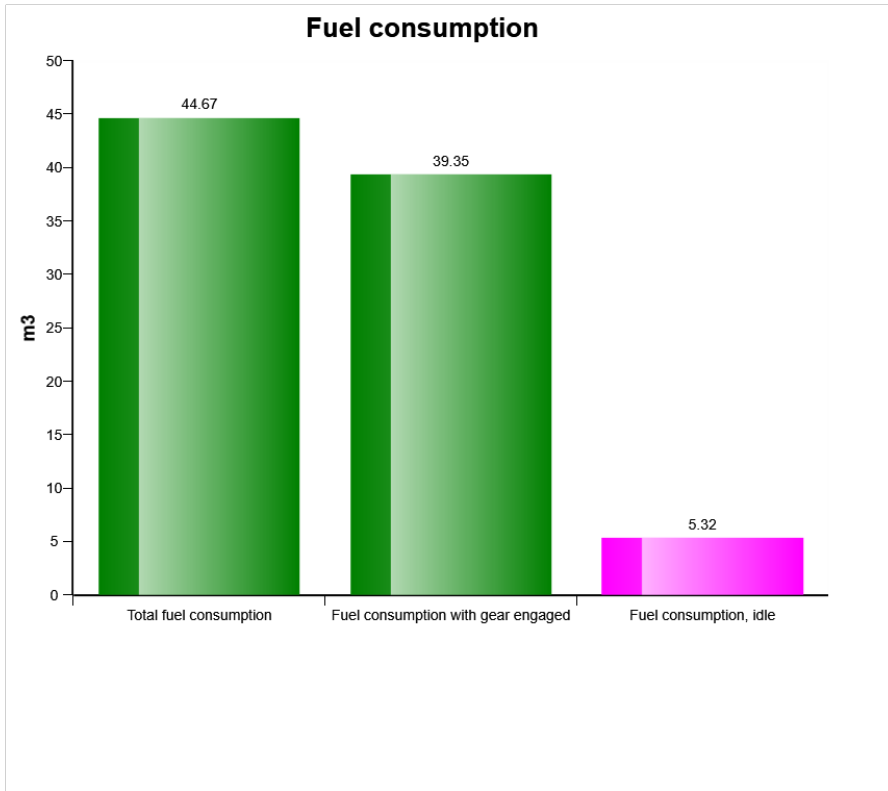


Machine model	SerialNo	Operating Hours	Reading Date
L110H	10261	5666.7	09/12/2019

Main equipment	Type	Equipment
	Tyre size/class	
	Main Attachment	
	Extra Counterweight	
	Ballast	
	Chains	
	Boom Suspension System	
	Attachment Interface	
	Volume m3 (yd3) / Area m2 (ft2)	
	Attachment make	

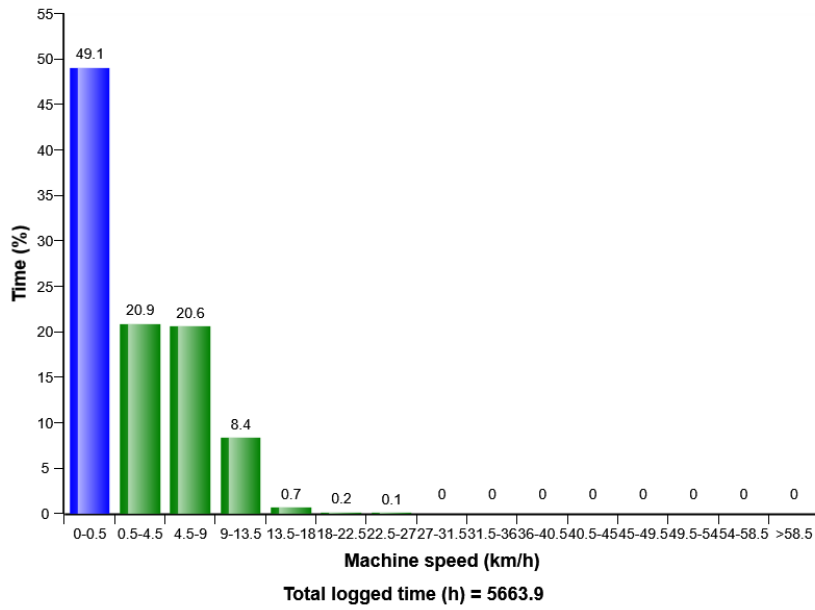


Machine model	SerialNo	Operating Hours	Reading Date
L110H	10261	5666.7	09/12/2019

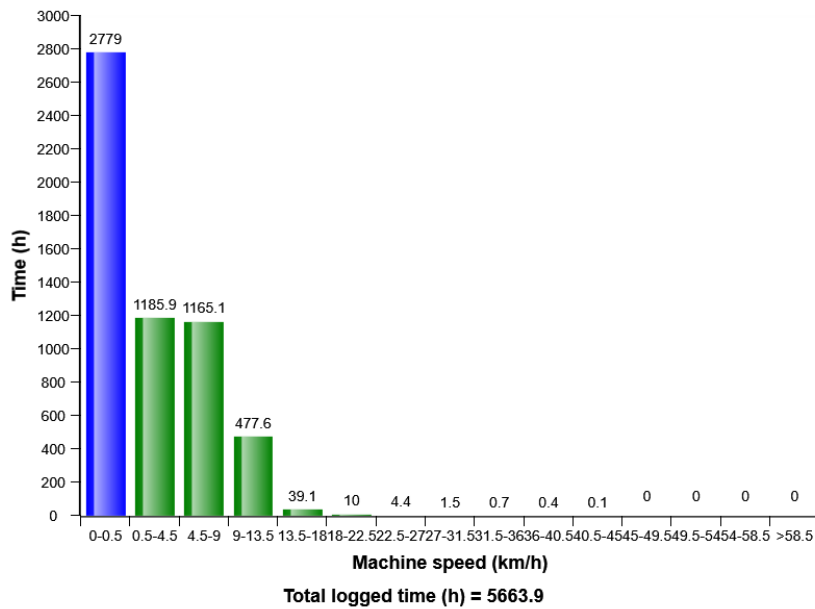


Machine model	SerialNo	Operating Hours	Reading Date
L110H	10261	5666.7	09/12/2019

Machine speed, distribution (%)

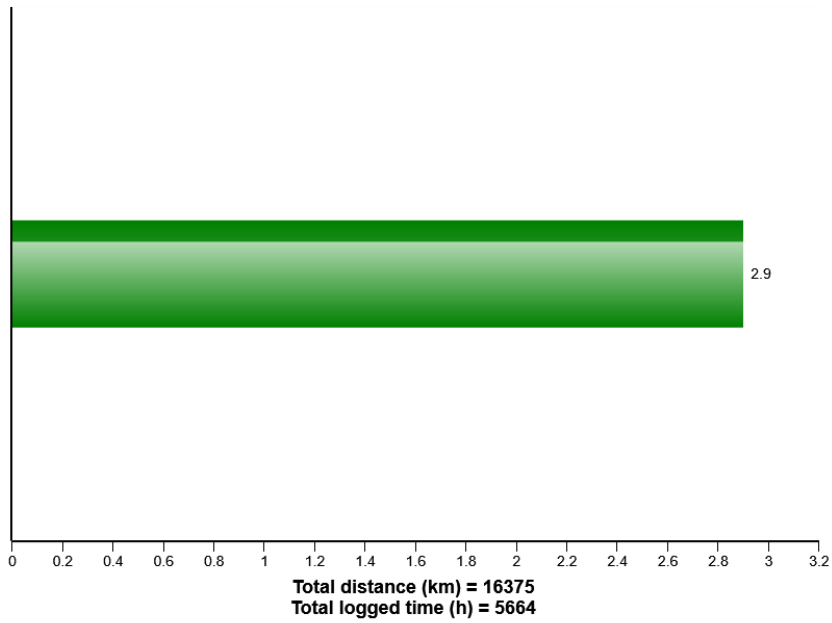


Machine speed, distribution

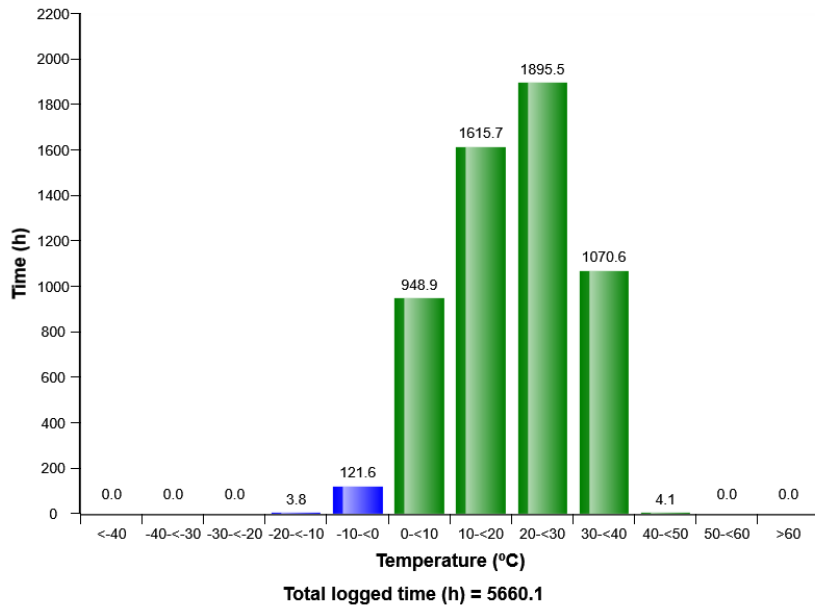


Machine model	SerialNo	Operating Hours	Reading Date
L110H	10261	5666.7	09/12/2019

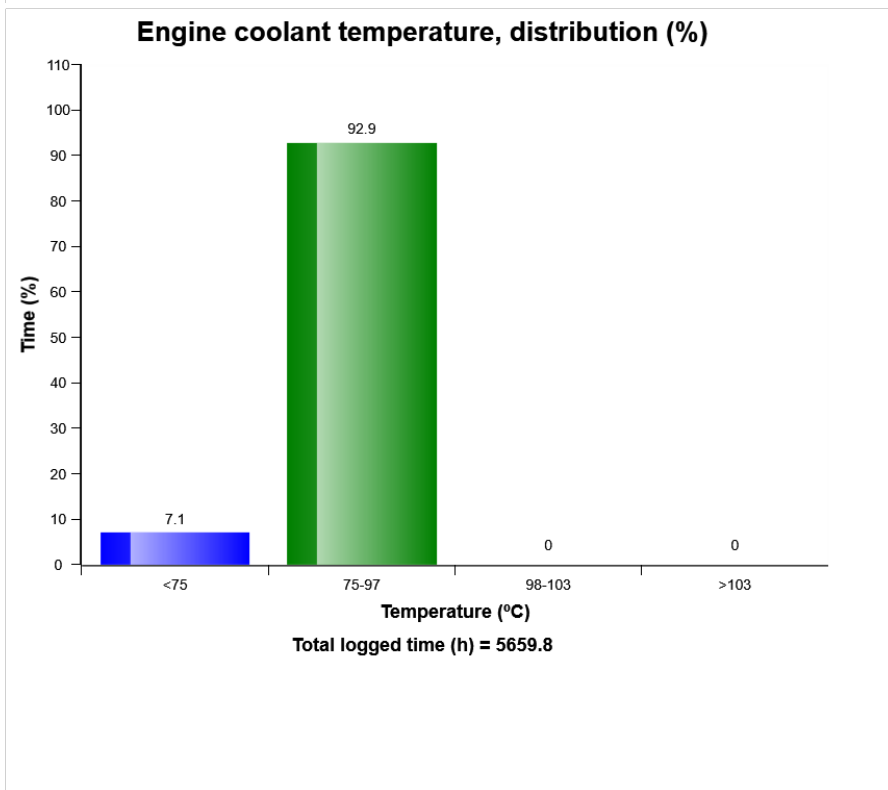
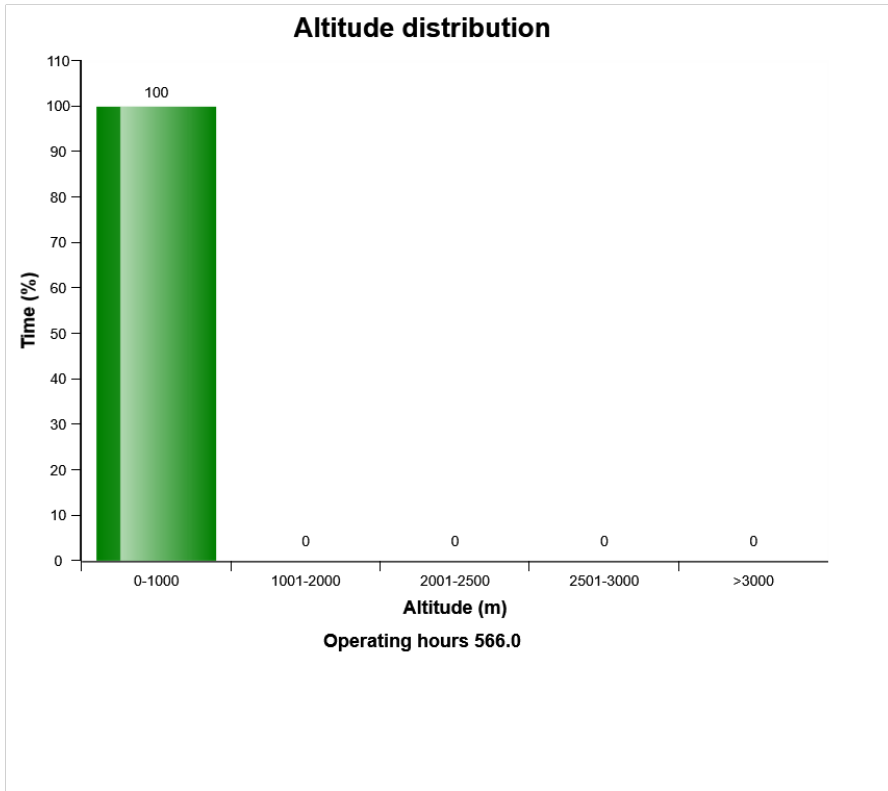
Average speed and distance



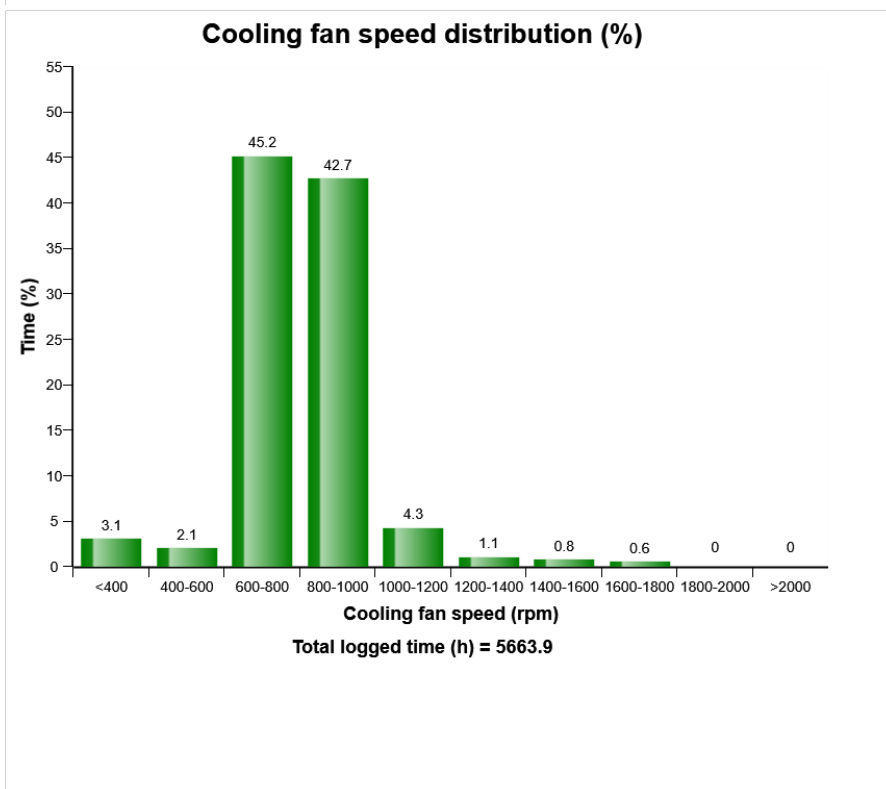
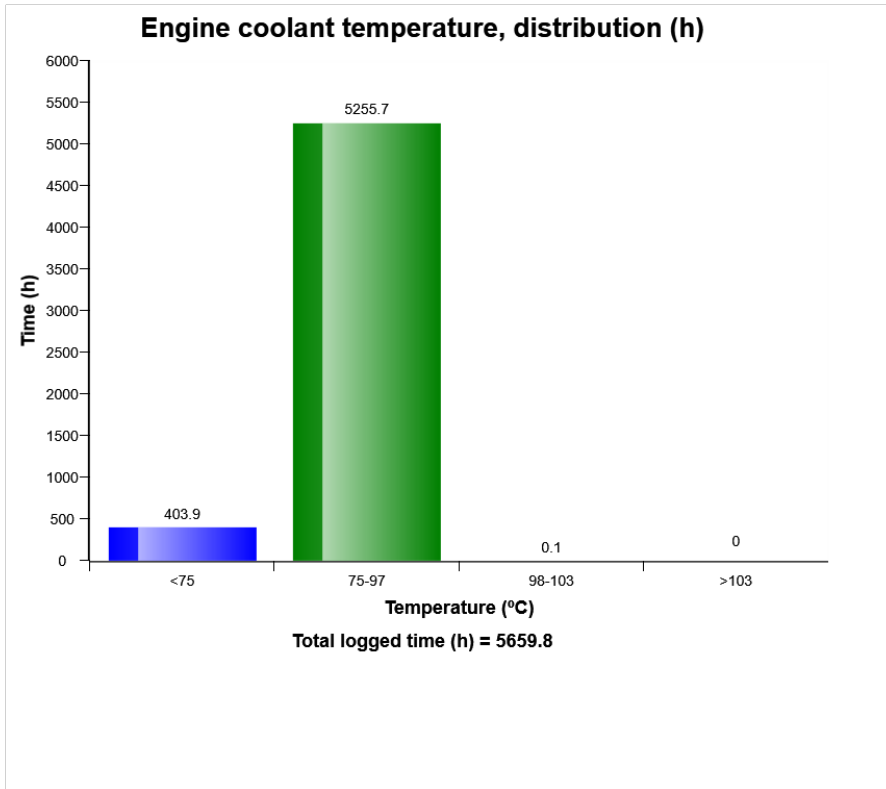
Machine ambient temperature distribution (h)



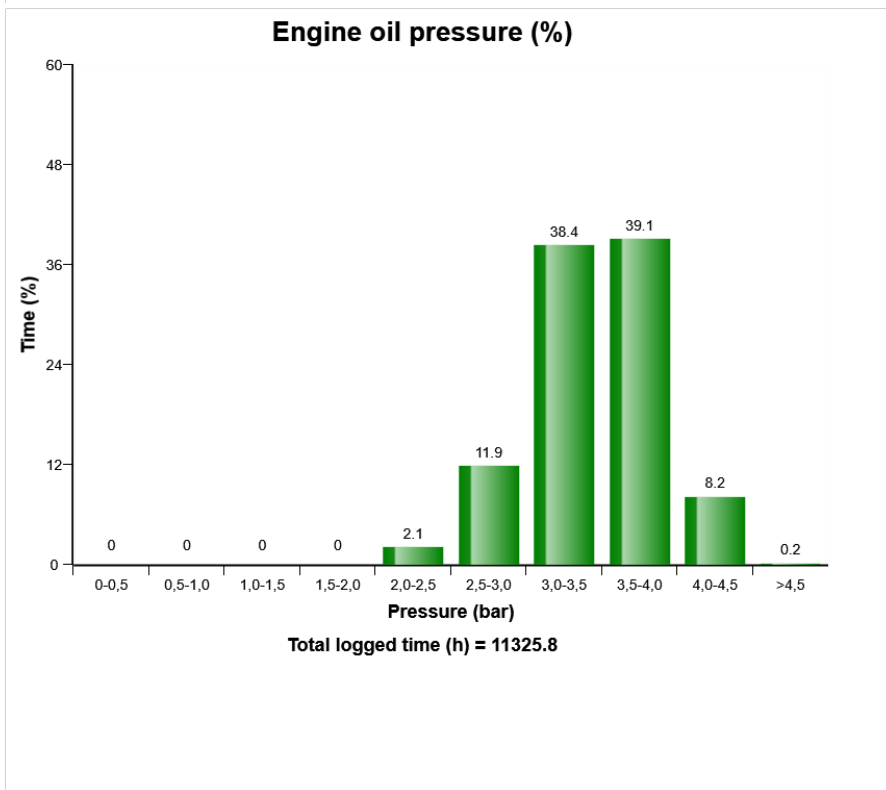
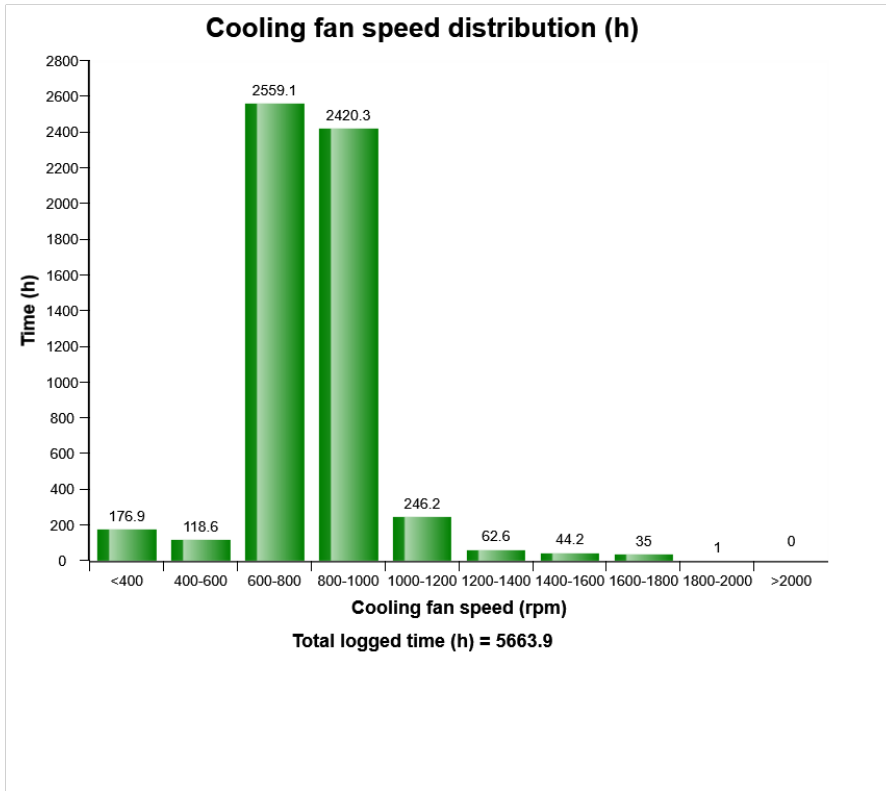
Machine model	SerialNo	Operating Hours	Reading Date
L110H	10261	5666.7	09/12/2019



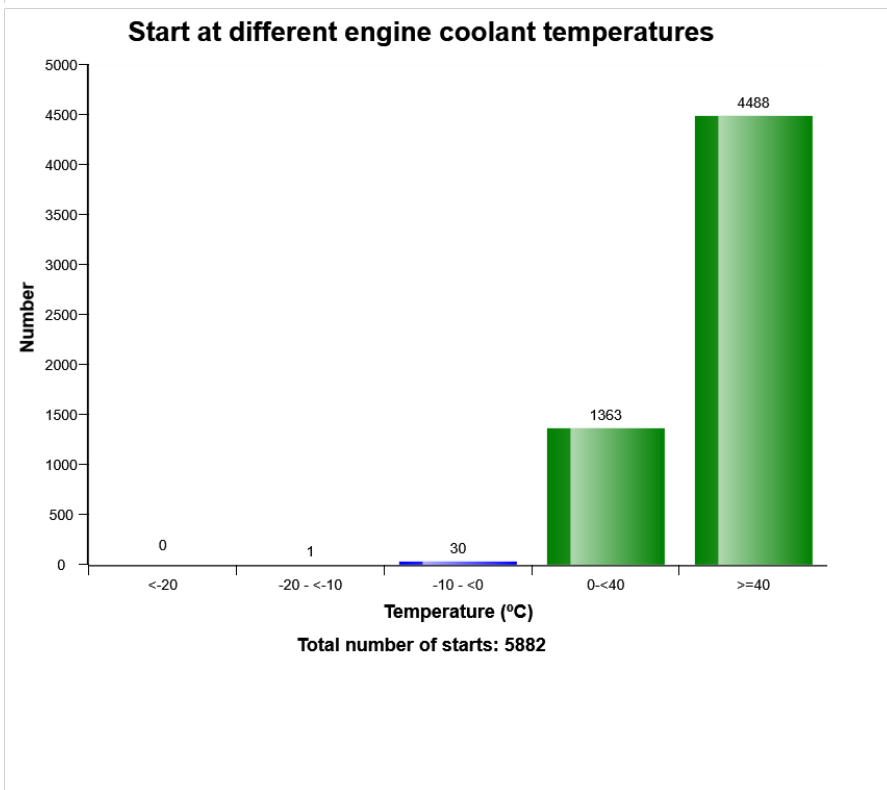
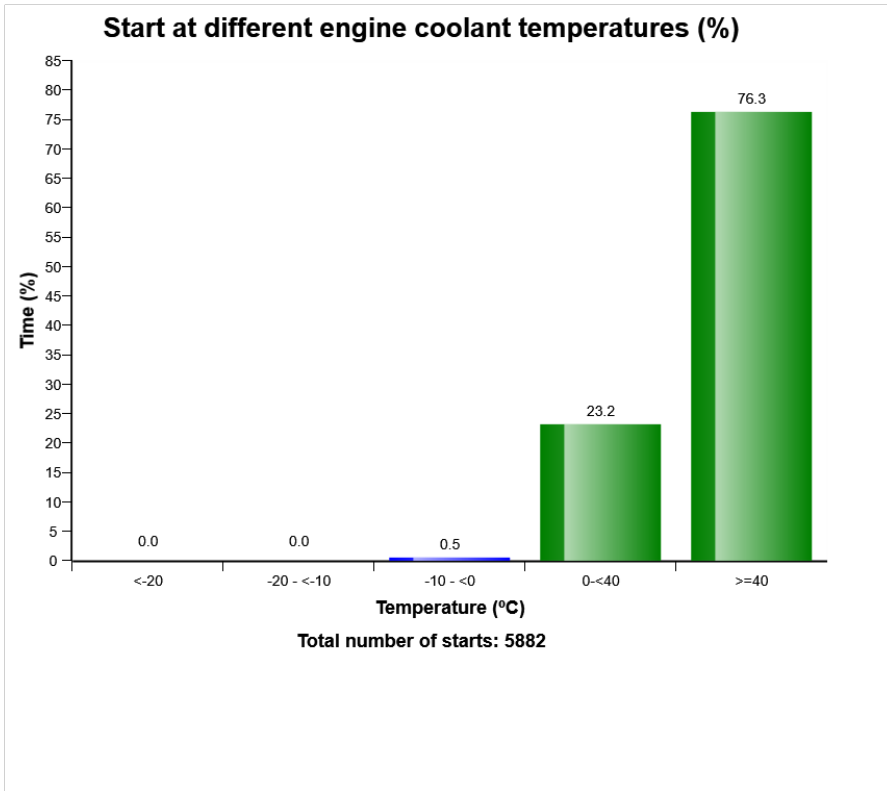
Machine model	SerialNo	Operating Hours	Reading Date
L110H	10261	5666.7	09/12/2019



Machine model	SerialNo	Operating Hours	Reading Date
L110H	10261	5666.7	09/12/2019

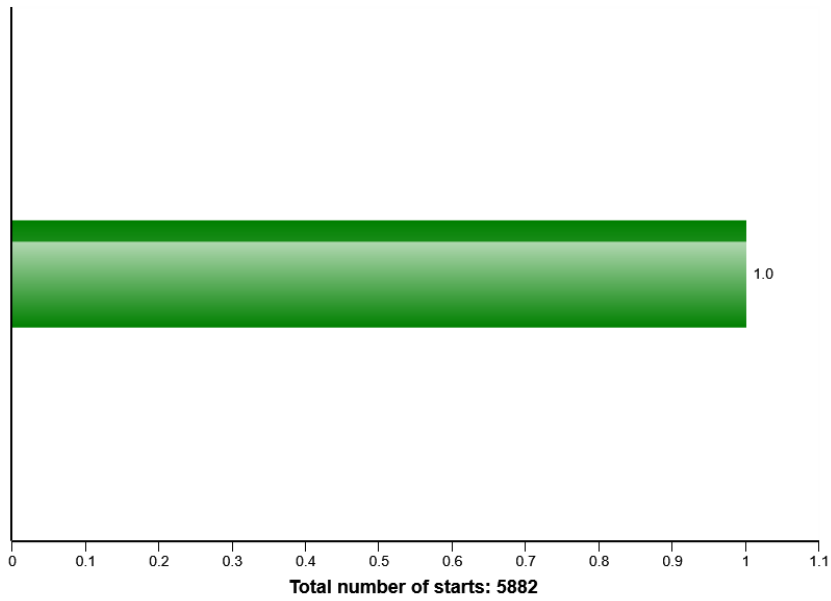


Machine model	SerialNo	Operating Hours	Reading Date
L110H	10261	5666.7	09/12/2019

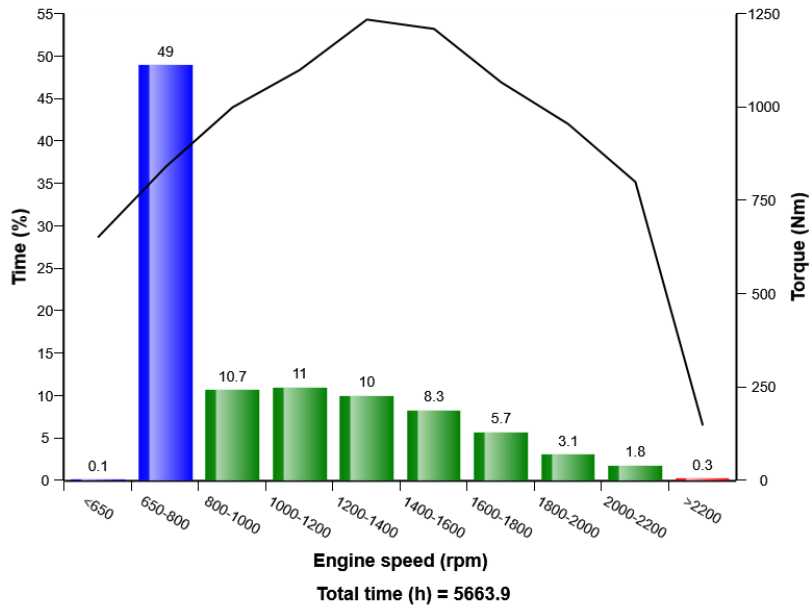


Machine model	SerialNo	Operating Hours	Reading Date
L110H	10261	5666.7	09/12/2019

Average number of starts per hour



Engine speed, distribution (%)



Machine model	SerialNo	Operating Hours	Reading Date
L110H	10261	5666.7	09/12/2019

Starter overheating
Total number of occurrences = 3840

Op hours	Year	Month	Day	Hour	Minute
0	2000	0	0	0	0
0	2000	0	0	0	0
0	2000	0	0	0	0
0	2000	0	0	0	0
0	2000	0	0	0	0
1318	2014	20	4	18	164
1322	2014	20	4	18	164
2320	2016	9	4	18	4
2342	2018	31	8	19	222
2568	2016	9	4	18	4
2618	2016	30	3	18	184
3130	2016	30	3	18	184
5674	2016	9	4	18	9
5903	2016	9	4	18	9
6914	2016	30	3	18	184
8477	2009	29	3	18	172
8504	2009	29	3	18	172
8707	2009	29	3	18	172
8729	2009	29	3	18	172
8734	2009	29	3	18	172



Machine model L110H	SerialNo 10261	Operating Hours 5666.7	Reading Date 09/12/2019
------------------------	-------------------	---------------------------	----------------------------

**Regeneration ignored
Total number of occurrences = 4608**

Op hours	Year	Month	Day	Hour	Minute	Duration (min)
* 0	2000	0	0	0	0	0
* 0	2000	0	0	0	0	0
* 0	2000	0	0	0	0	0
* 0	2000	0	0	0	0	0
* 0	2000	0	0	0	0	0
* 0	2000	0	0	0	0	0
* 0	2000	0	0	0	0	0
* 0	2000	0	0	0	0	0
* 0	2000	0	0	0	0	0
* 0	2000	0	0	0	0	0
* 0	2000	0	0	0	0	0
* 0	2000	0	0	0	0	0
* 0	2000	0	0	0	0	0
* 0	2000	0	0	0	0	0
* 0	2000	0	0	0	0	0
* 0	2000	0	0	0	0	0
* 0	2000	0	0	0	0	0
* 0	2000	0	0	0	0	0
* 5435	2015	20	6	17	247	92
* 6676	2007	7	3	17	28	98
* 8763	2013	19	10	17	0	0
* 10807	2006	27	1	16	3	41
* 11565	2016	6	3	17	233	82



Machine model	SerialNo	Operating Hours	Reading Date
L110H	10261	5666.7	09/12/2019

Regeneration duration
Total number of occurrences = 4096

Op hours	Year	Month	Day	Hour	Minute	Duration (min)
* 0	2000	0	0	0	0	0
* 0	2000	0	0	0	0	0
* 0	2000	0	0	0	0	0
* 0	2000	0	0	0	0	0
* 1587	2013	8	8	18	69	23
* 2327	2017	6	3	17	115	31
* 3609	2016	20	6	17	58	40
* 3616	2009	21	5	19	75	39
* 4136	2016	8	8	18	245	39
* 5946	2013	11	4	18	162	40
* 6180	2008	7	3	17	196	39
* 6422	2014	19	10	17	149	39
* 6449	2015	20	6	17	221	23
* 7169	2009	15	2	19	210	39
* 7946	2012	13	11	18	87	40
* 8986	2009	13	9	19	51	21
* 10755	2008	19	4	18	156	40
* 11049	2015	25	1	18	253	39
* 11296	2006	27	1	16	100	40
* 14637	2009	13	9	19	101	38



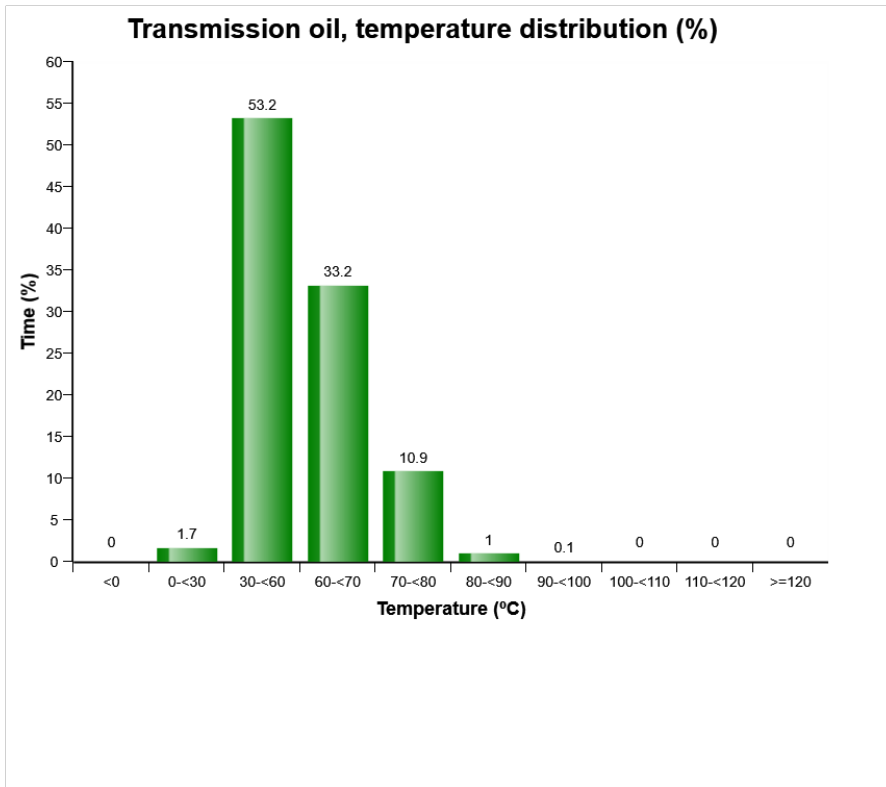
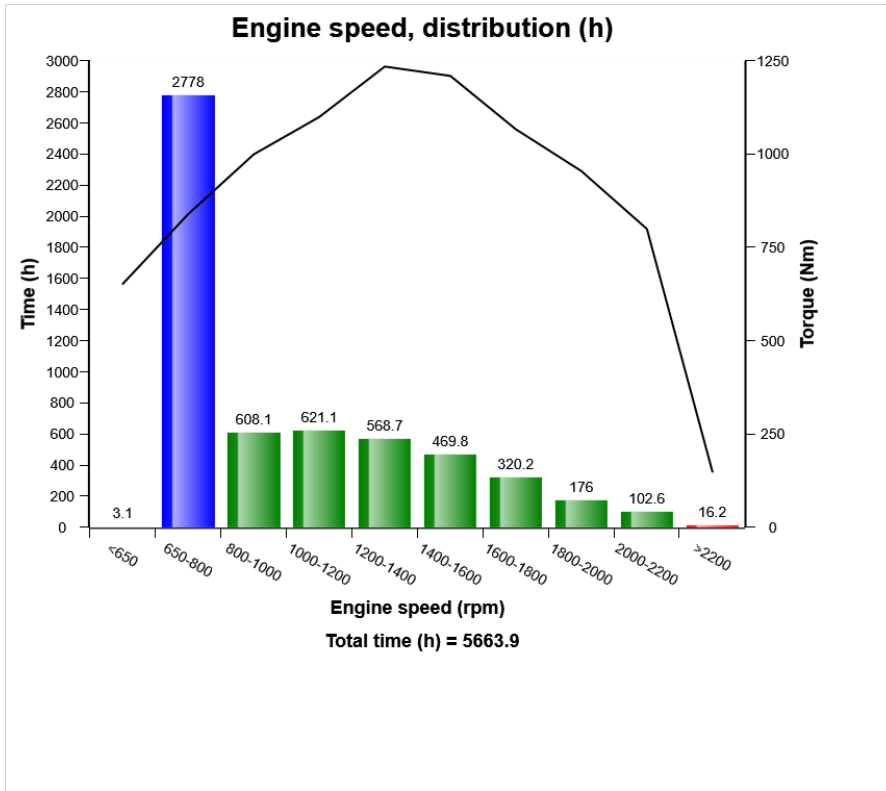
Machine model L110H	SerialNo 10261	Operating Hours 5666.7	Reading Date 09/12/2019
-------------------------------	--------------------------	----------------------------------	-----------------------------------

**Low voltage
Total number of occurences = 256**

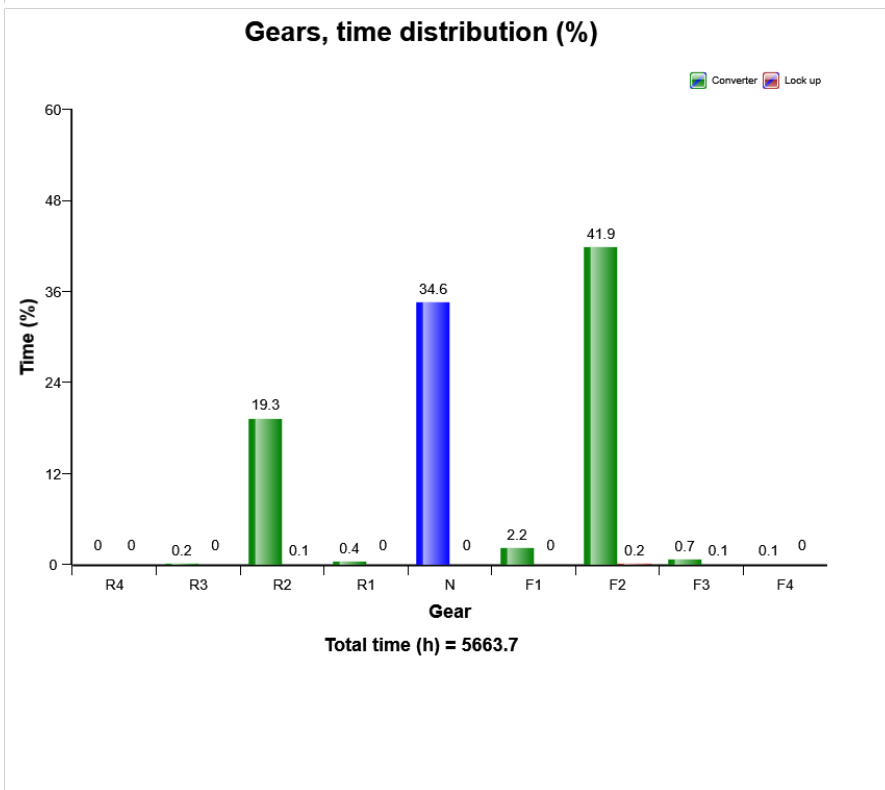
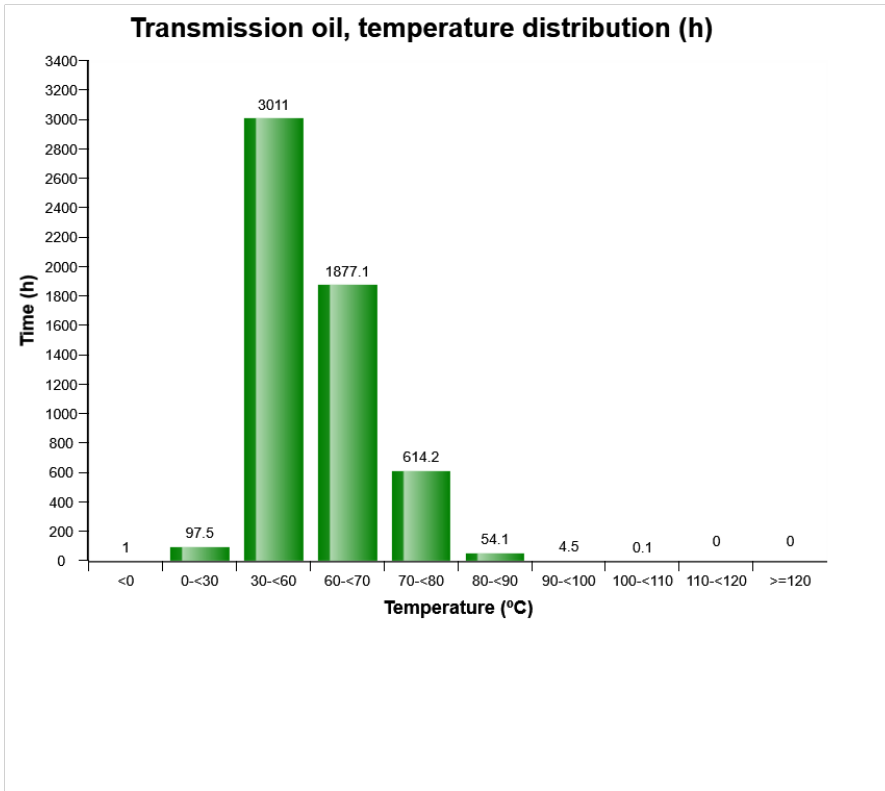
Op hours	Year	Month	Day	Hour	Minute	Duration (seconds)	Extreme value
0	2000	0	0	0	0	0	0
0	2000	0	0	0	0	0	0
0	2000	0	0	0	0	0	0
0	2000	0	0	0	0	0	0
0	2000	0	0	0	0	0	0
0	2000	0	0	0	0	0	0
0	2000	0	0	0	0	0	0
0	2000	0	0	0	0	0	0
0	2000	0	0	0	0	0	0
0	2000	0	0	0	0	0	0
0	2000	0	0	0	0	0	0
0	2000	0	0	0	0	0	0
0	2000	0	0	0	0	0	0
0	2000	0	0	0	0	0	0
0	2000	0	0	0	0	0	0
0	2000	0	0	0	0	0	0
0	2000	0	0	0	0	0	0
0	2000	0	0	0	0	0	0
0	2000	0	0	0	0	0	0
0	2000	0	0	0	0	0	0
0	2000	0	0	0	0	0	0
0	2000	0	0	0	0	0	0
0	2000	0	0	0	0	0	0
0	2000	0	0	0	0	0	0
0	2000	0	0	0	0	0	0
0	2000	0	0	0	0	0	0
13068	2008	2	1	18	34	2	19



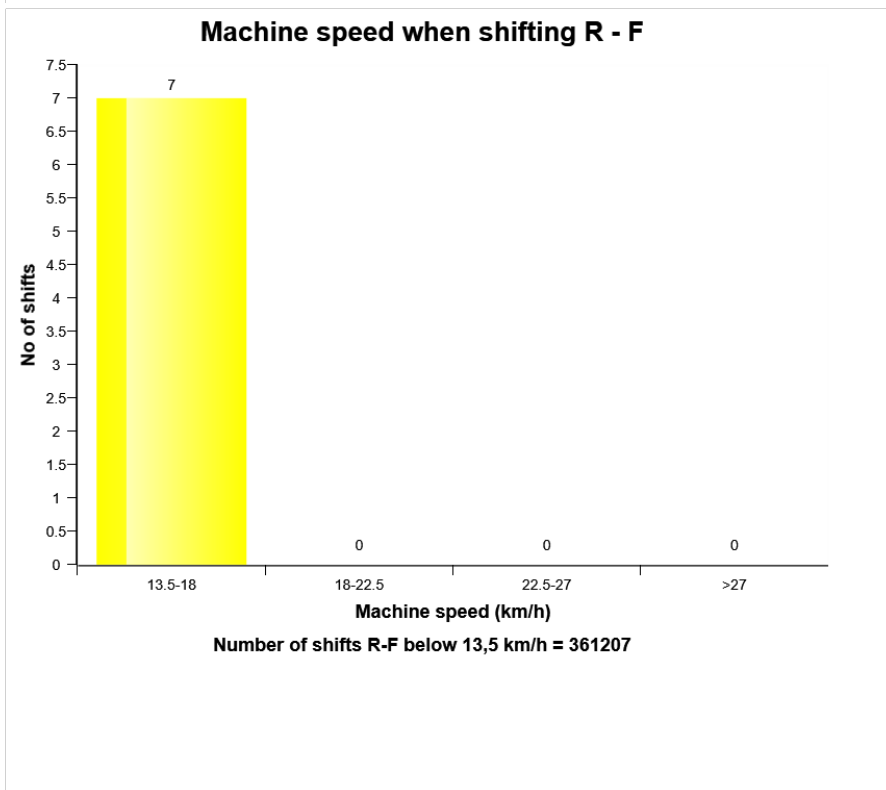
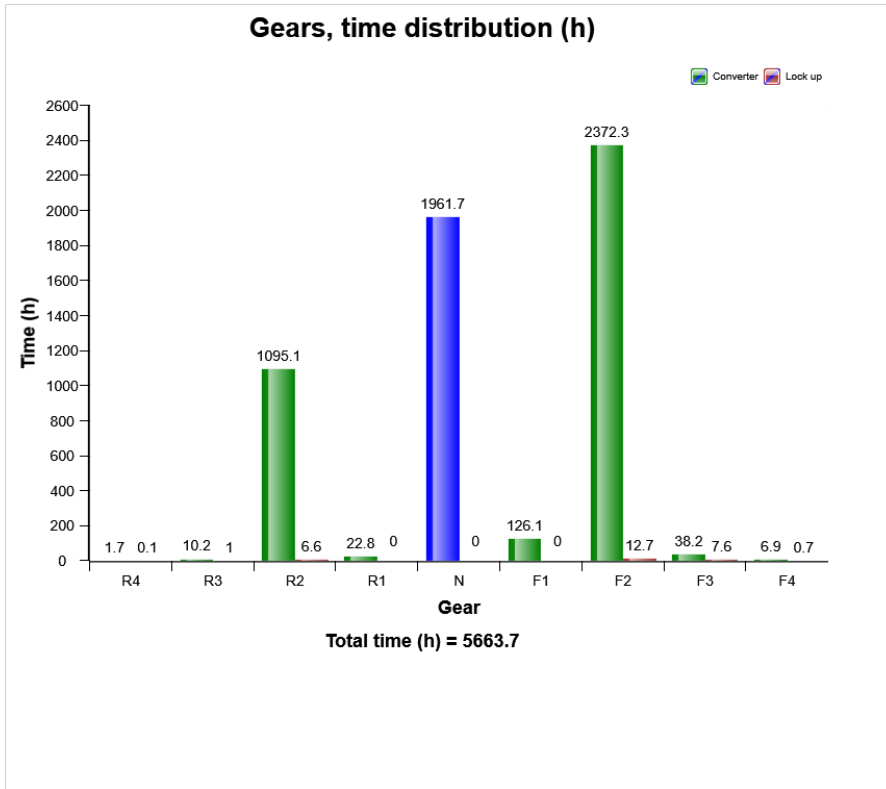
Machine model	SerialNo	Operating Hours	Reading Date
L110H	10261	5666.7	09/12/2019



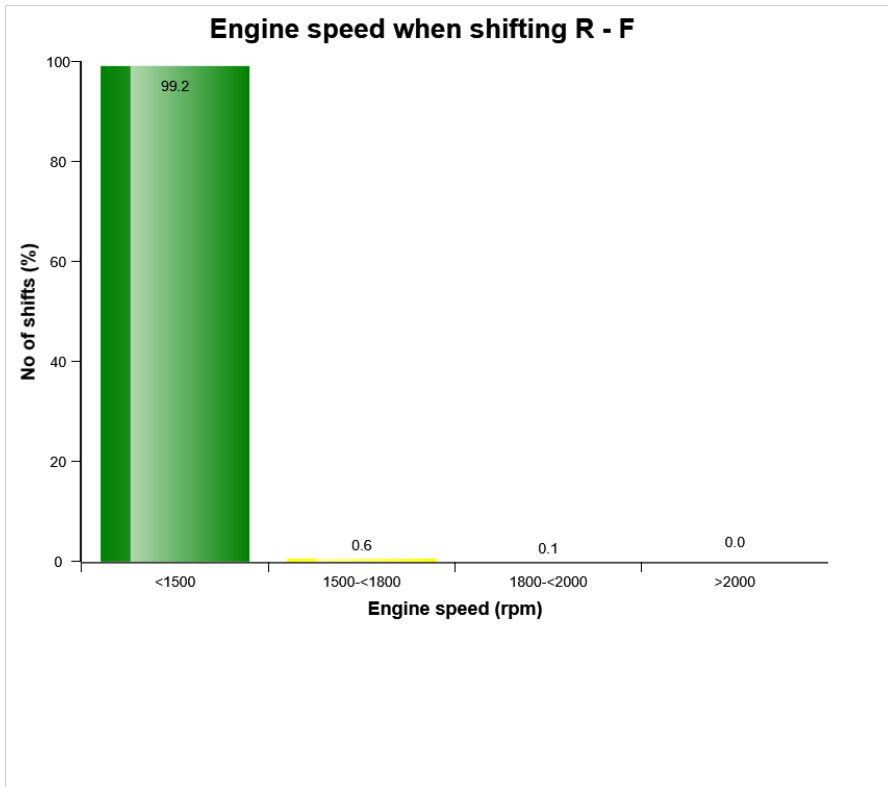
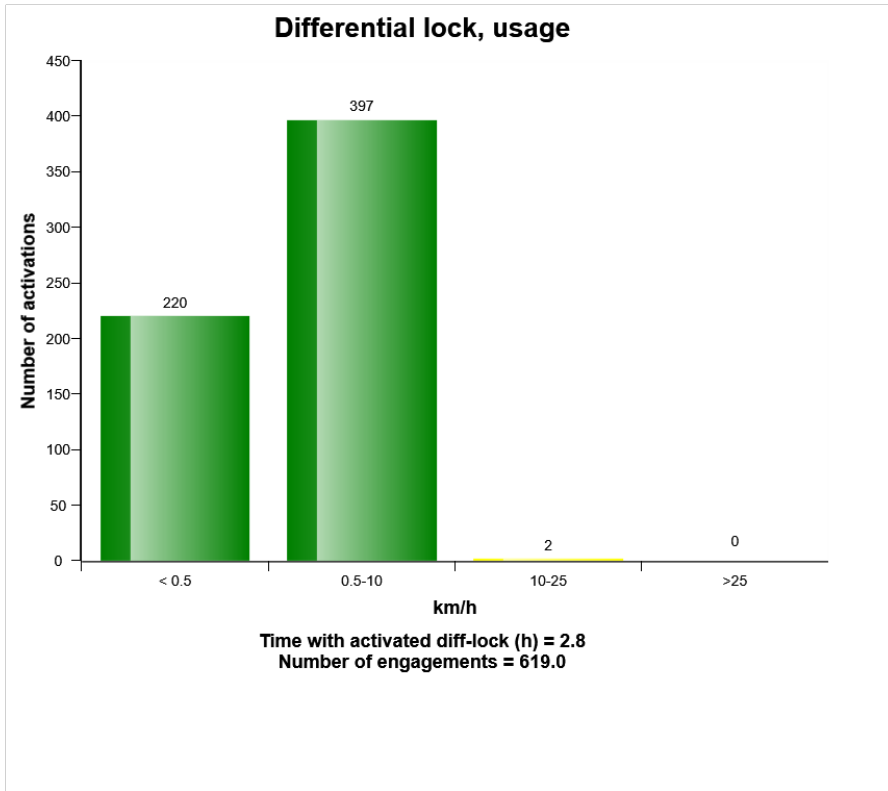
Machine model	SerialNo	Operating Hours	Reading Date
L110H	10261	5666.7	09/12/2019



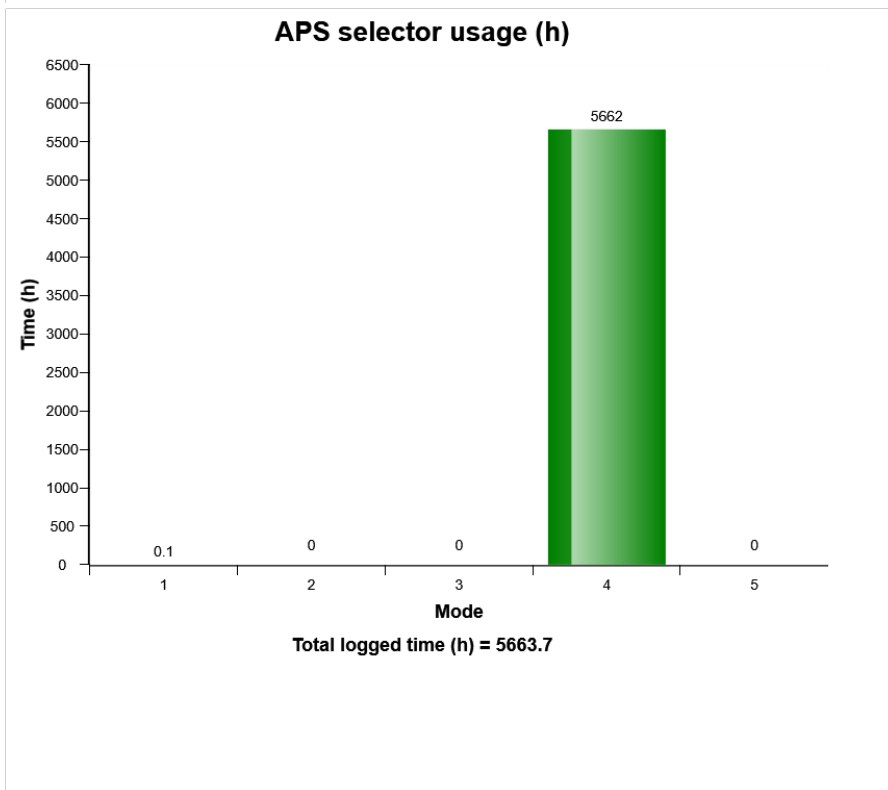
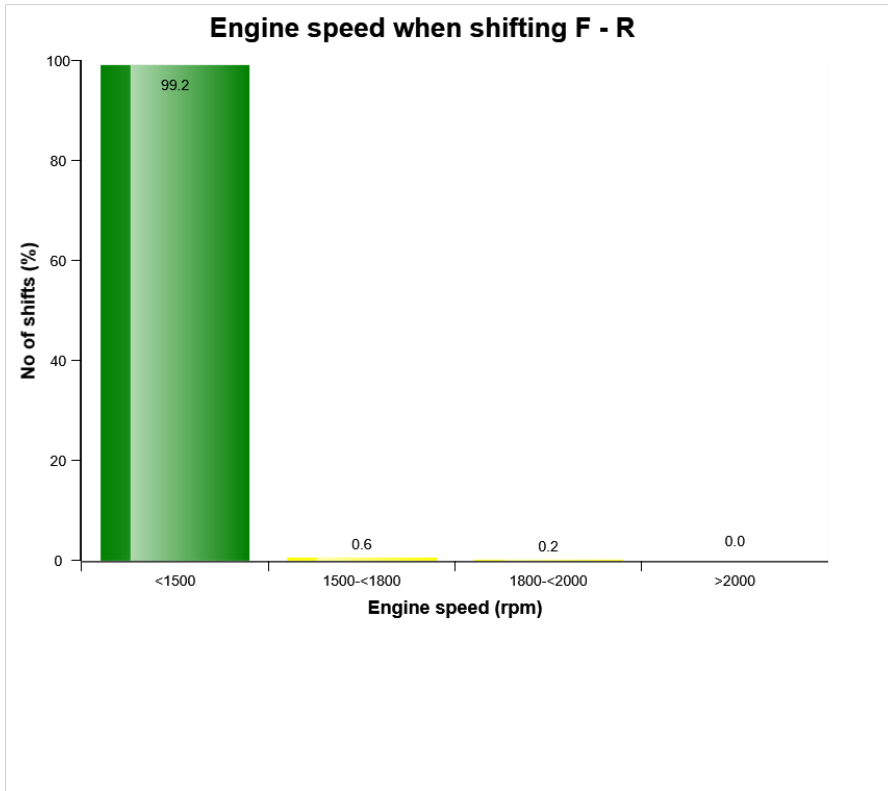
Machine model	SerialNo	Operating Hours	Reading Date
L110H	10261	5666.7	09/12/2019



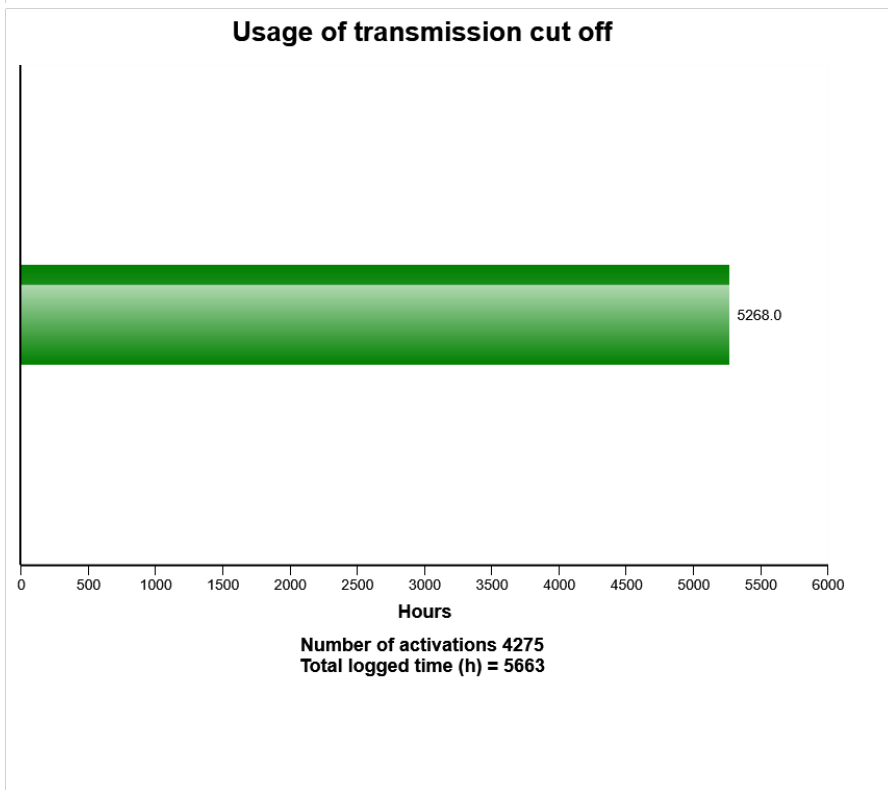
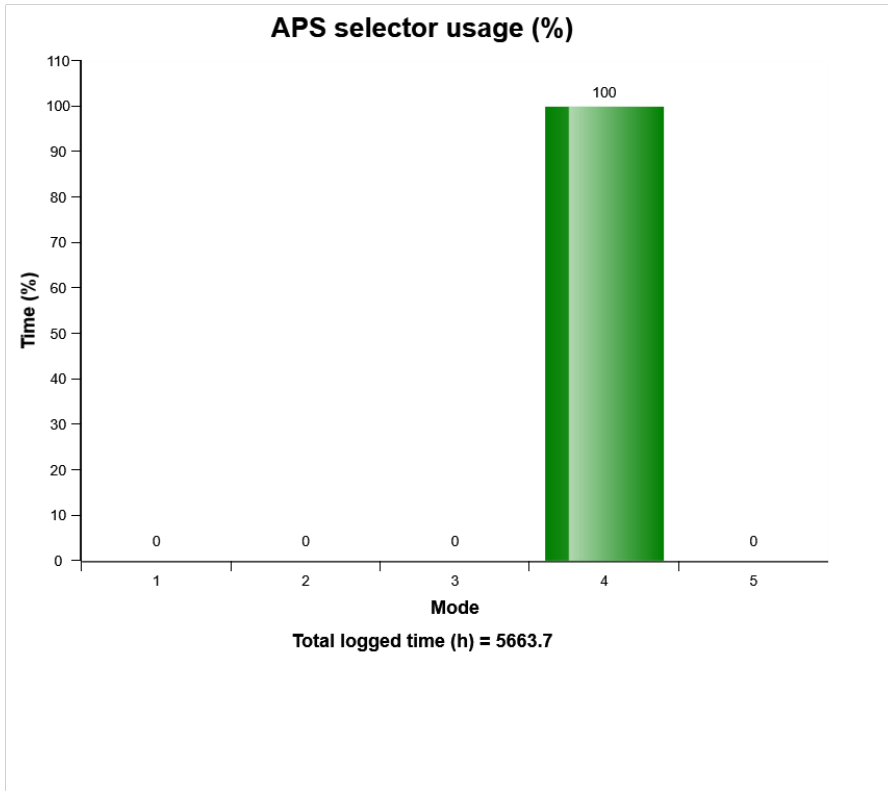
Machine model	SerialNo	Operating Hours	Reading Date
L110H	10261	5666.7	09/12/2019



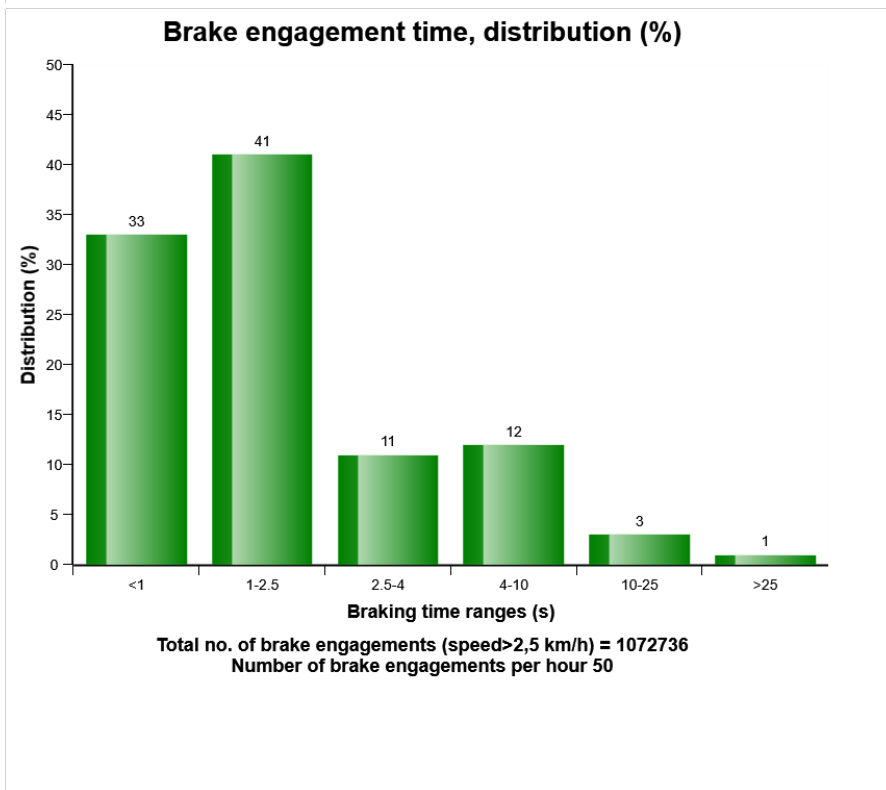
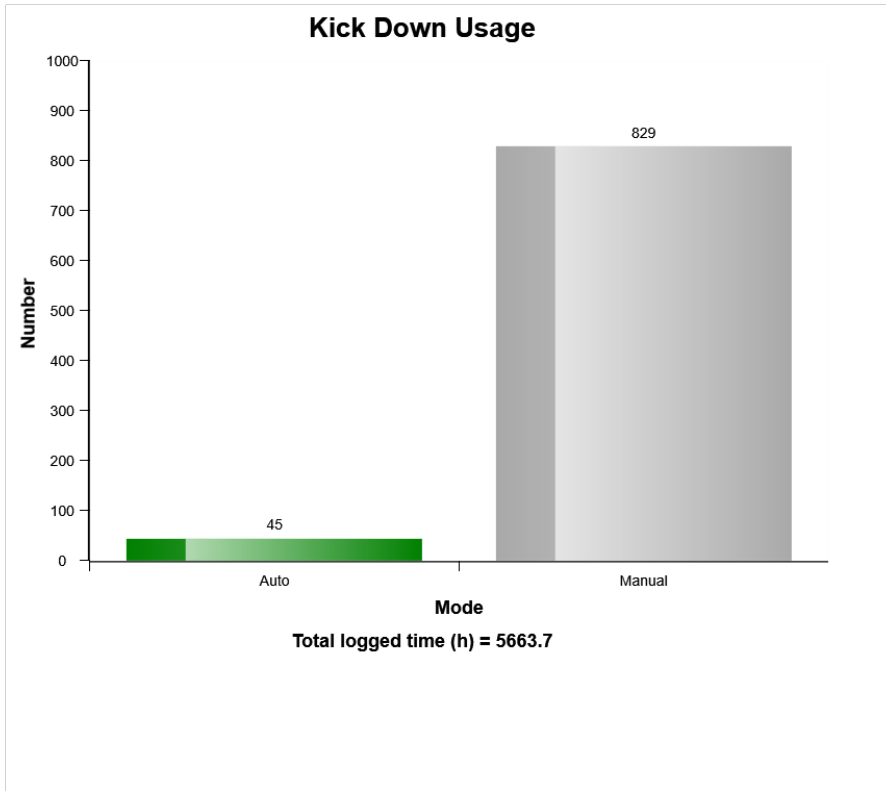
Machine model	SerialNo	Operating Hours	Reading Date
L110H	10261	5666.7	09/12/2019



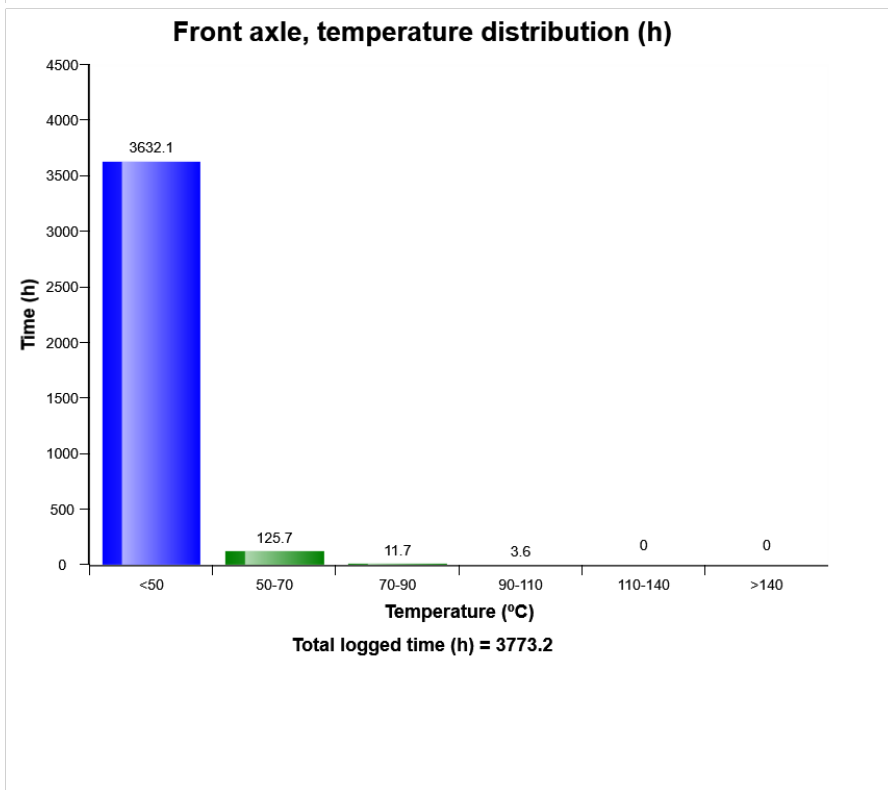
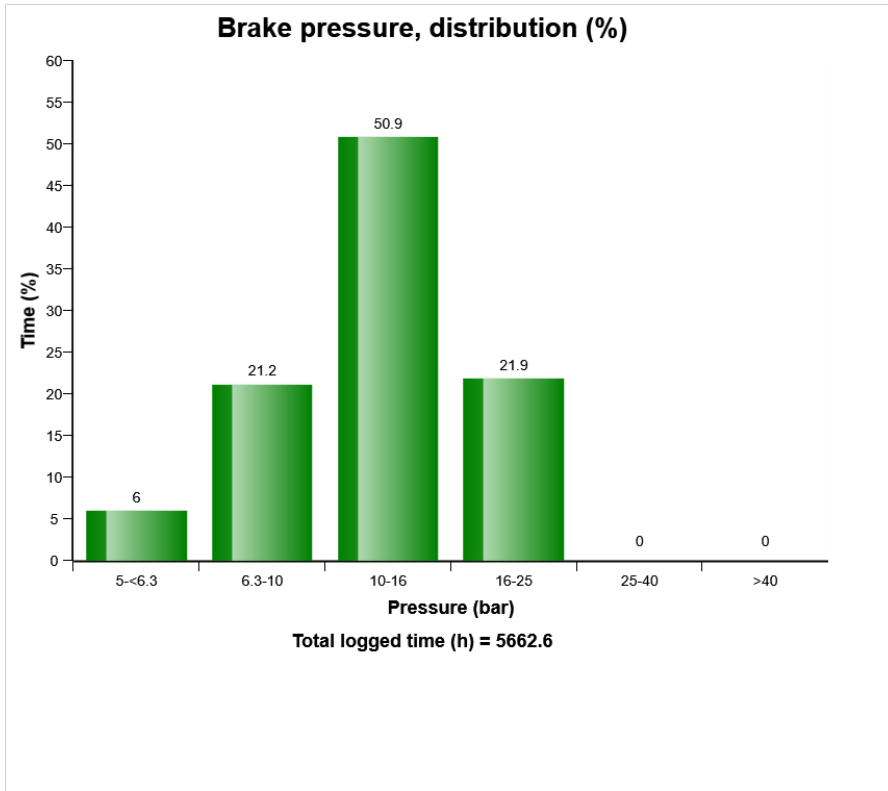
Machine model	SerialNo	Operating Hours	Reading Date
L110H	10261	5666.7	09/12/2019



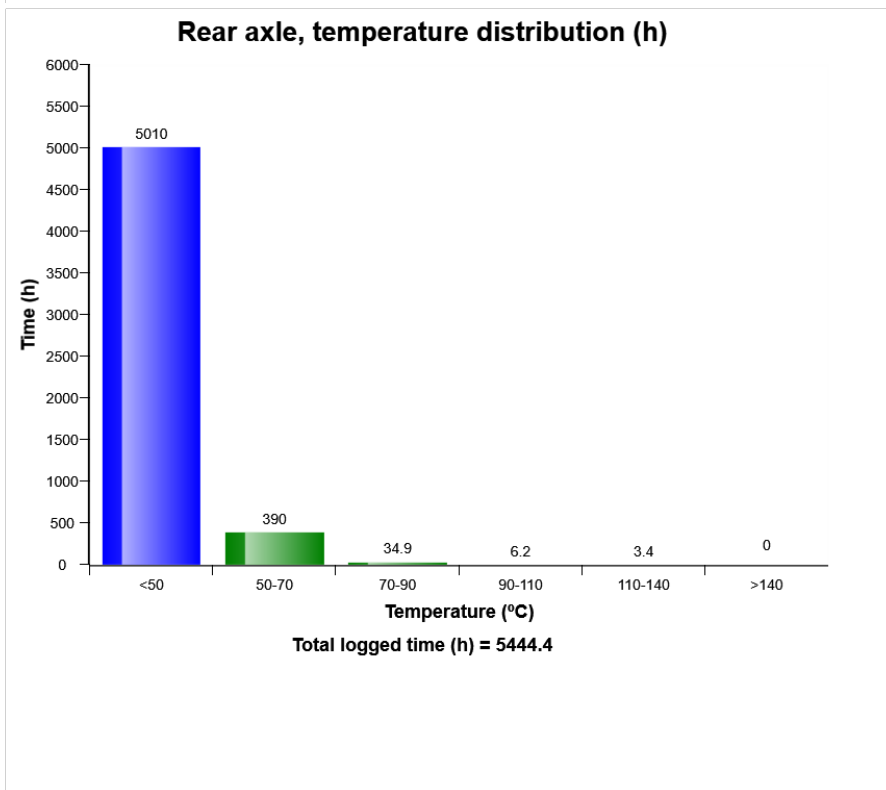
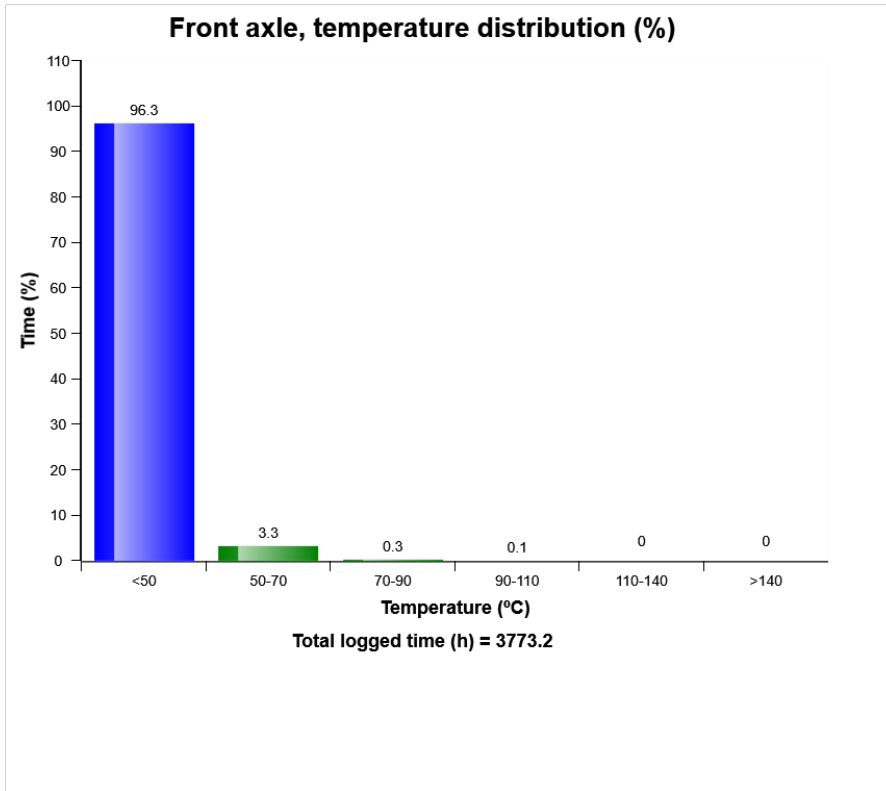
Machine model	SerialNo	Operating Hours	Reading Date
L110H	10261	5666.7	09/12/2019



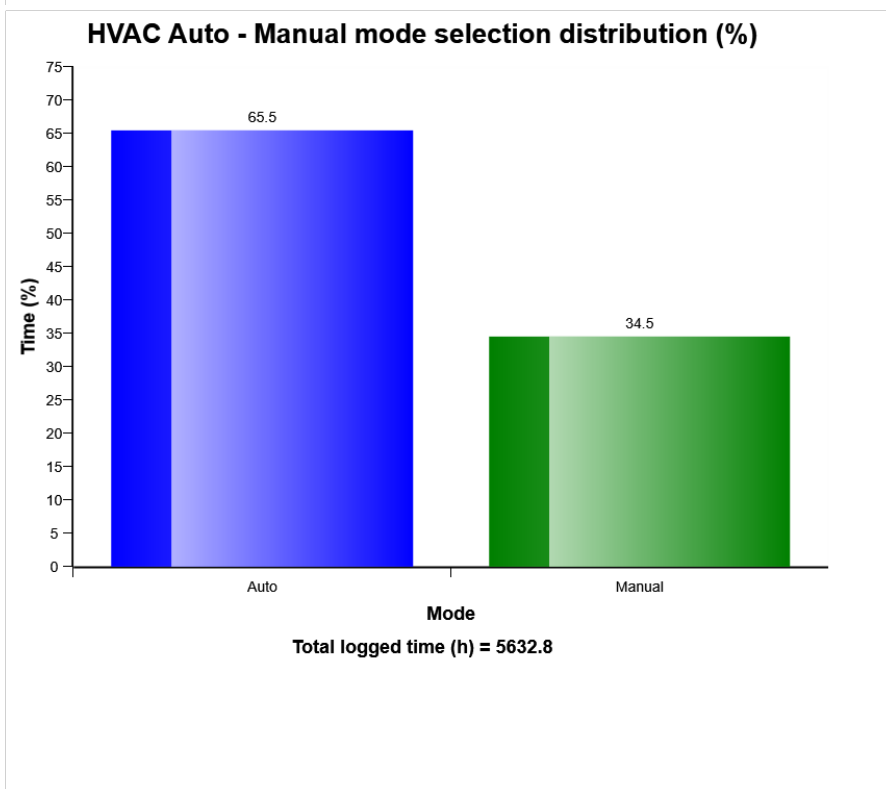
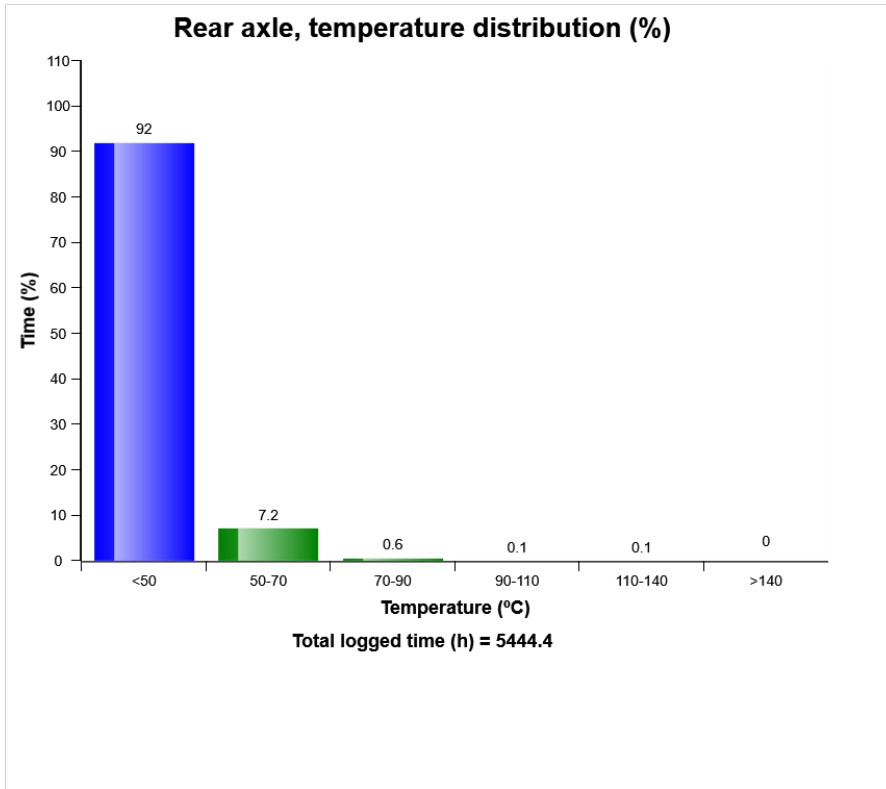
Machine model	SerialNo	Operating Hours	Reading Date
L110H	10261	5666.7	09/12/2019



Machine model	SerialNo	Operating Hours	Reading Date
L110H	10261	5666.7	09/12/2019

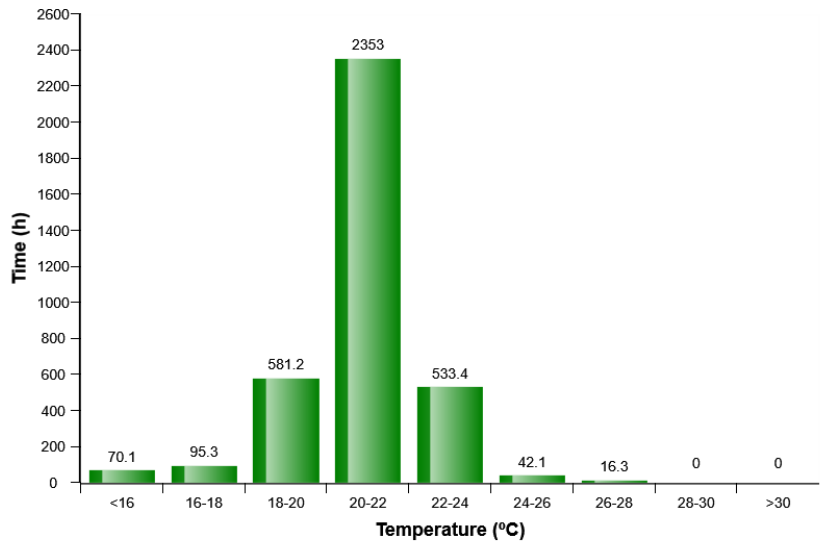


Machine model	SerialNo	Operating Hours	Reading Date
L110H	10261	5666.7	09/12/2019

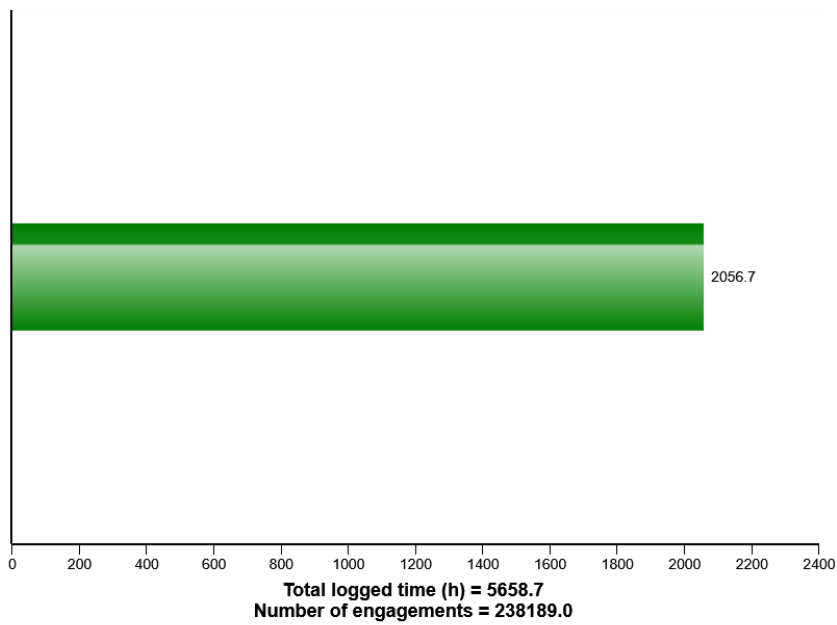


Machine model	SerialNo	Operating Hours	Reading Date
L110H	10261	5666.7	09/12/2019

HVAC air temperature setting in auto control mode distribution (h)

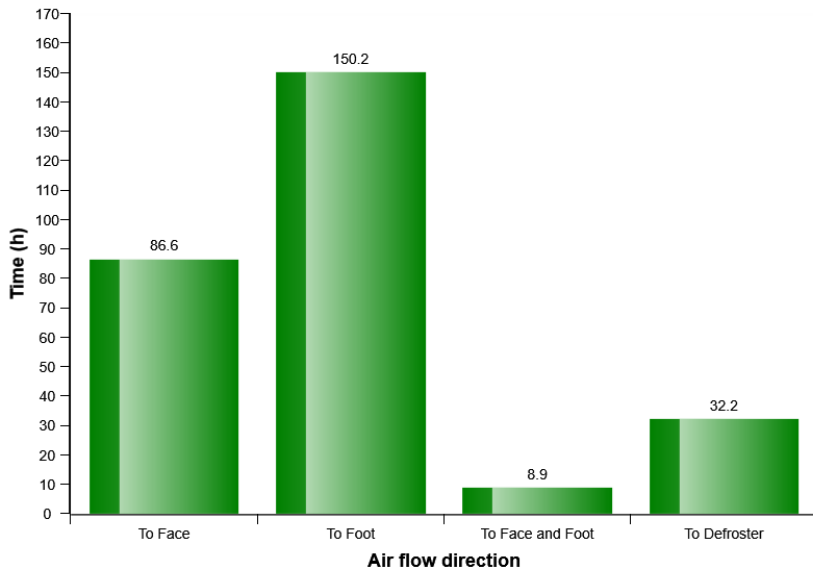


AC Compressor usage

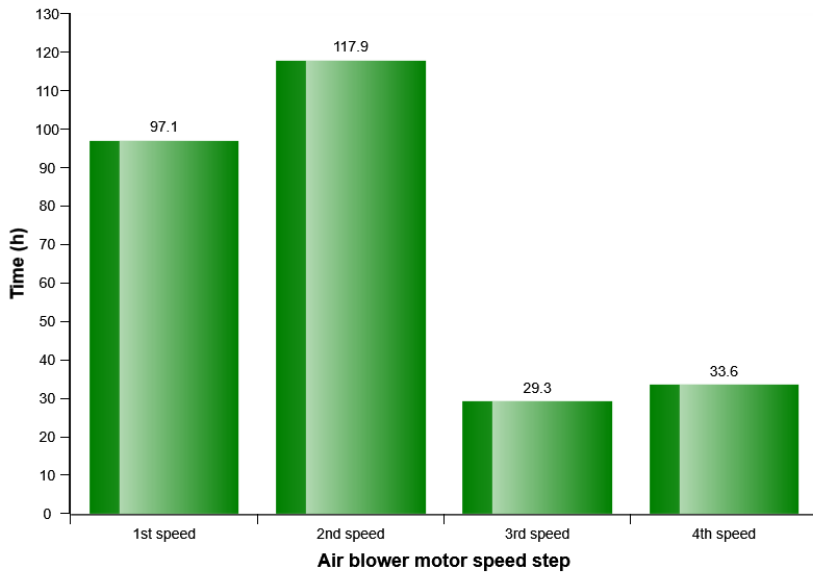


Machine model	SerialNo	Operating Hours	Reading Date
L110H	10261	5666.7	09/12/2019

HVAC air flow direction in manual mode distribution (h)



HVAC air blower motor speed in manual mode distribution (h)



Machine model	SerialNo	Operating Hours	Reading Date
L110H	10261	5666.7	09/12/2019

