

VOLVO CONSTRUCTION EQUIPMENT MATRIS REPORT

Machine model EC300E	SerialNo 310073	Operating Hours 4308.6	Reading Date 11/09/2019
Company name volvo	Dealer	Report Issuer	
Contact name	Technician arnold	Primary Application Site Preparation	
Site	Workorder	Ground Condition	

MATRIS Reading, Summary / Recommendation



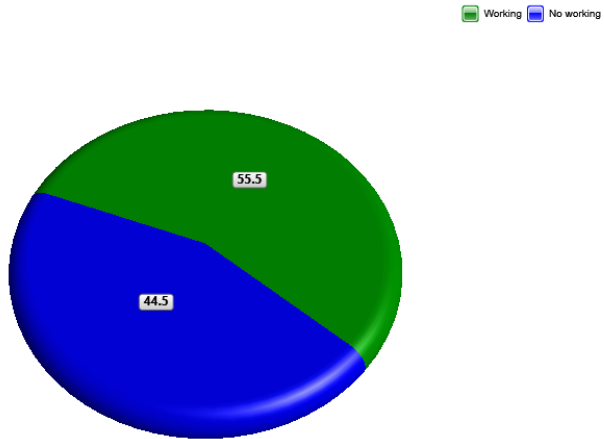
Machine model	SerialNo	Operating Hours	Reading Date
EC300E	310073	4308.6	11/09/2019

Main equipment	Type	Equipment
	Track chain	
	X3 piping	
	Main Attachment	
	Attachment Interface	
	Hydraulic Fluid	
	X1 Piping	
	Hose Rupture Valve on Boom	
	Hose Rupture Valve on Arm	
	X1 return filter	



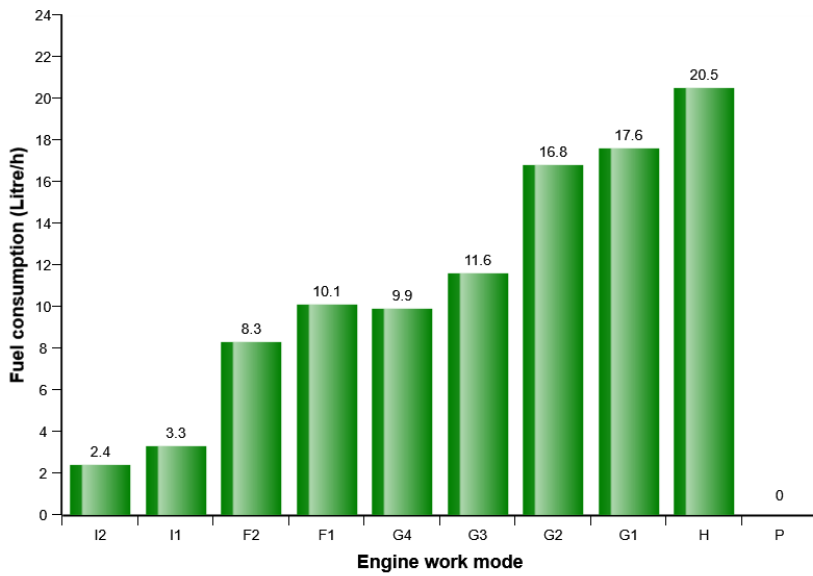
Machine model	SerialNo	Operating Hours	Reading Date
EC300E	310073	4308.6	11/09/2019

Machine utilization (%)



Total logged time (h) = 4308.9

Average fuel consumption per work mode

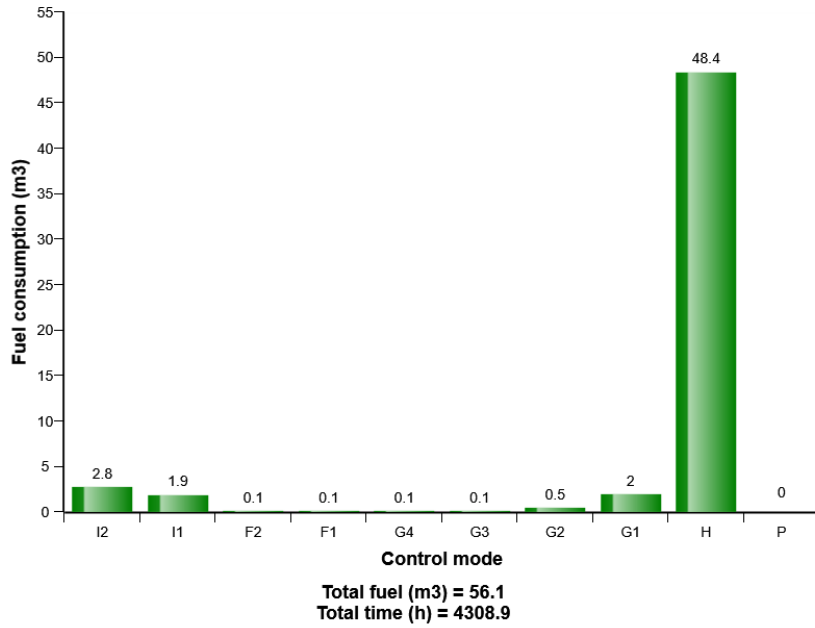


Fuel consumption (L/h) = 13.0
Amount of fuel used (m3) = 56.1

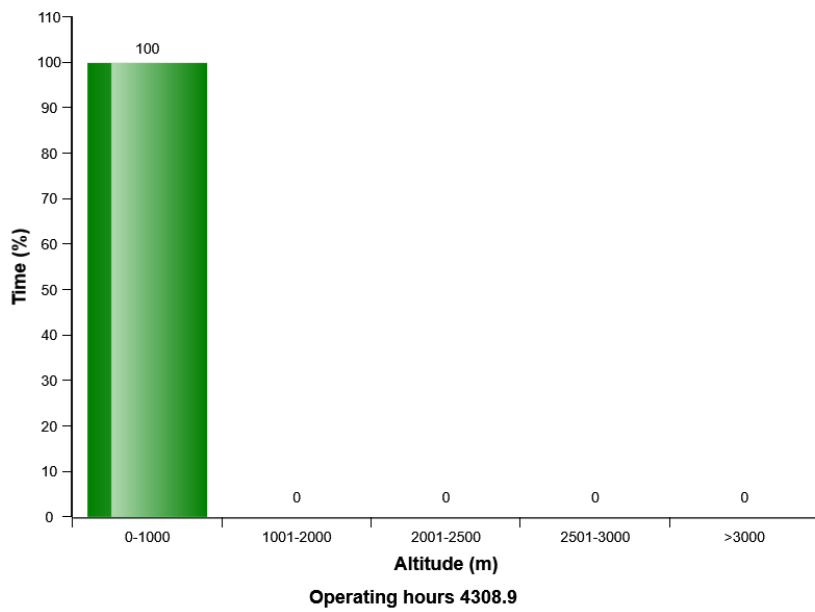


Machine model	SerialNo	Operating Hours	Reading Date
EC300E	310073	4308.6	11/09/2019

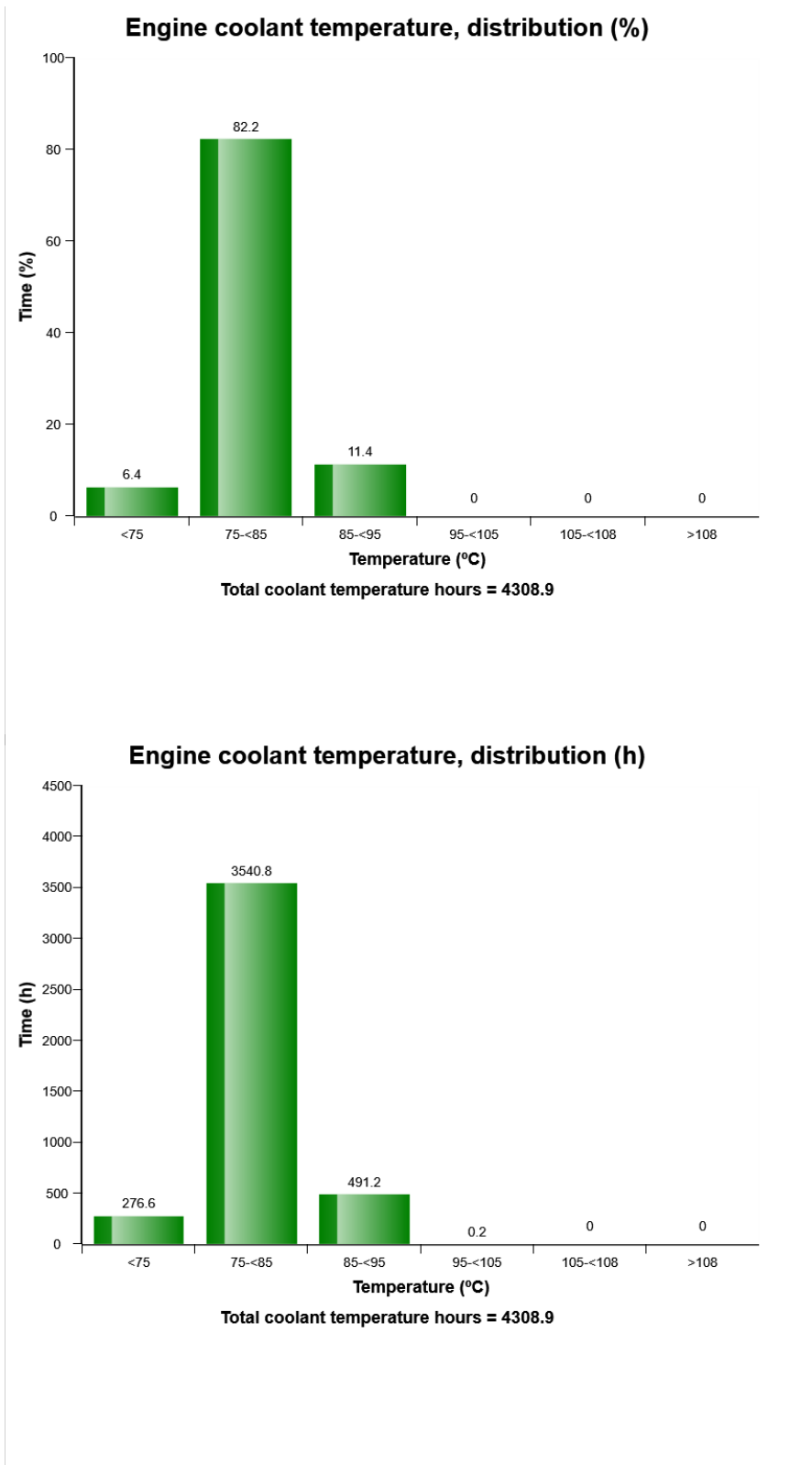
Fuel consumption distribution on work mode(m3)



Altitude distribution

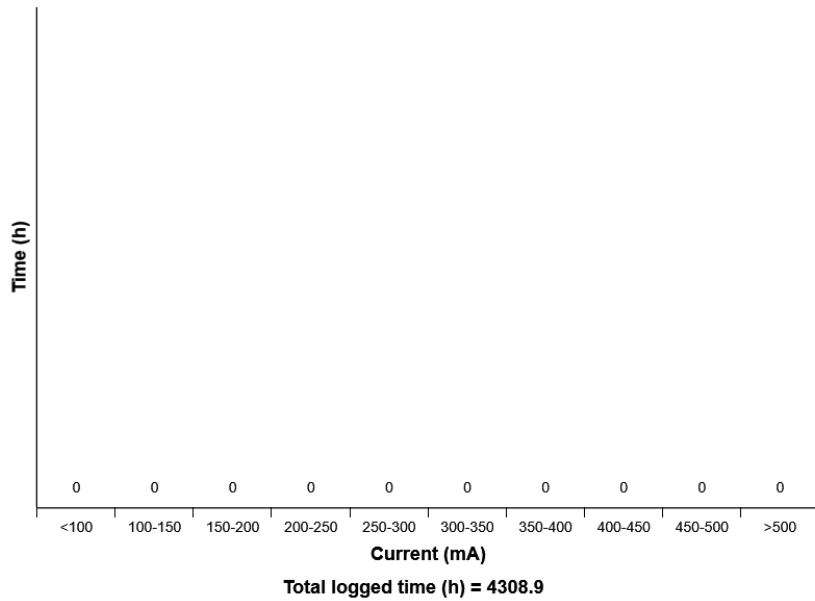


Machine model	SerialNo	Operating Hours	Reading Date
EC300E	310073	4308.6	11/09/2019

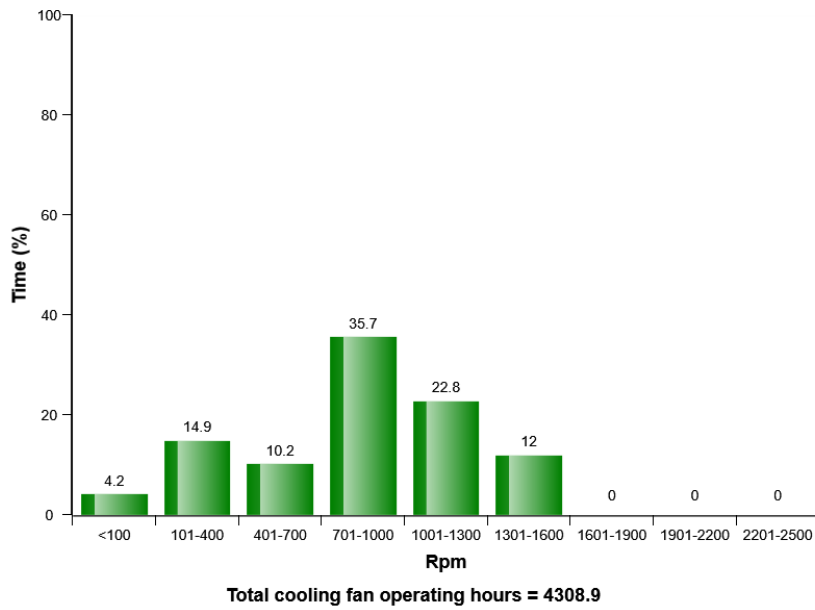


Machine model	SerialNo	Operating Hours	Reading Date
EC300E	310073	4308.6	11/09/2019

Cooling Fan, speed control current distribution(h)

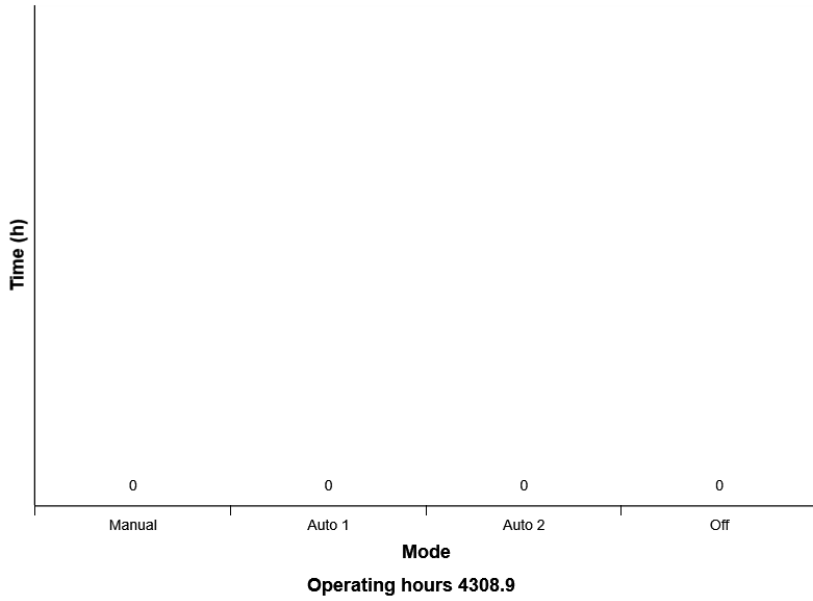


Cooling fan (clutch type) speed distribution (%)

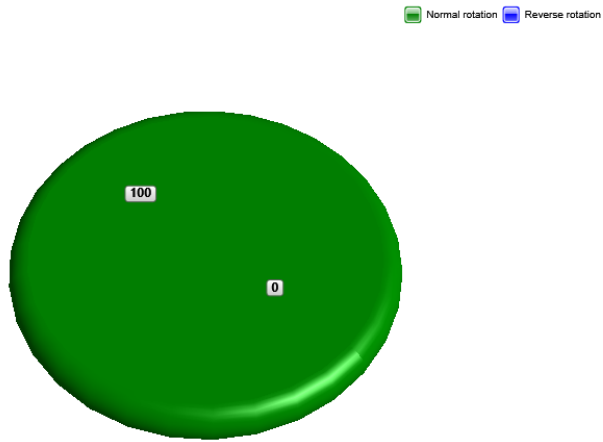


Machine model	SerialNo	Operating Hours	Reading Date
EC300E	310073	4308.6	11/09/2019

Cooling fan, Mode distribution (h)

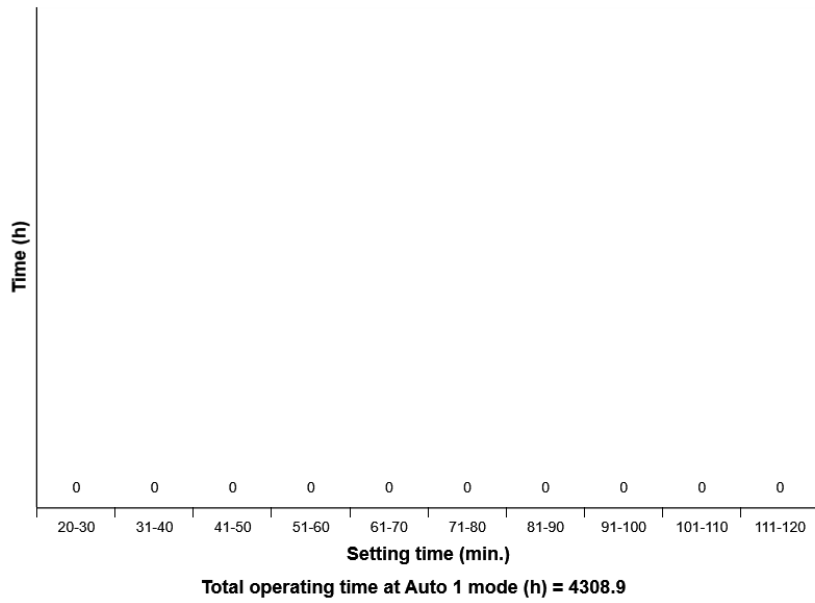


Cooling fan, Normal-Reverse rotation distribution (%)

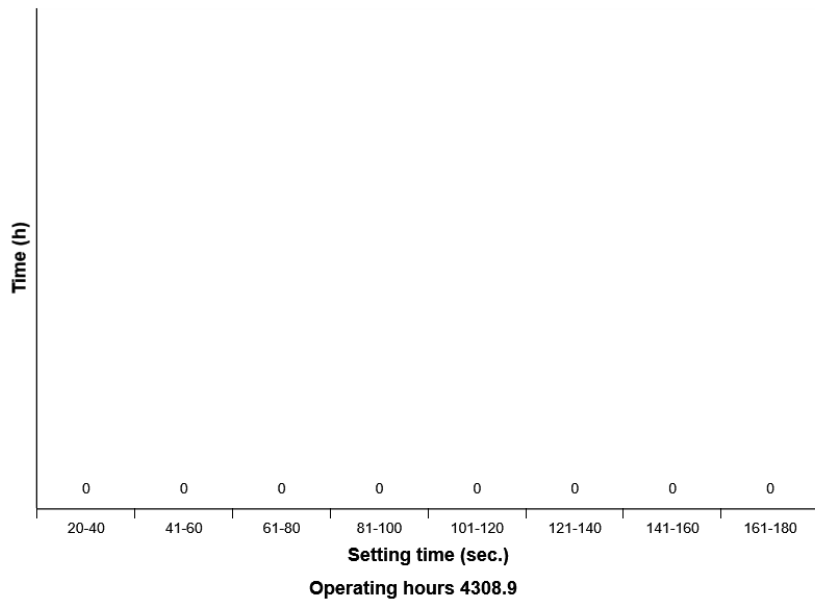


Machine model	SerialNo	Operating Hours	Reading Date
EC300E	310073	4308.6	11/09/2019

Reverisble fan, Time setting distribution (h) at Auto 1 mode

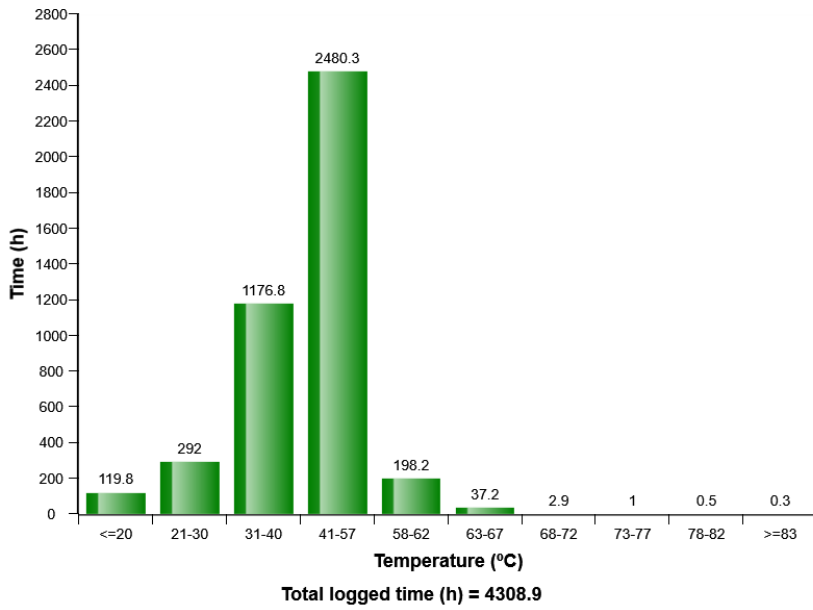


Reversible fan, Time setting distribution (h) at Manual mode

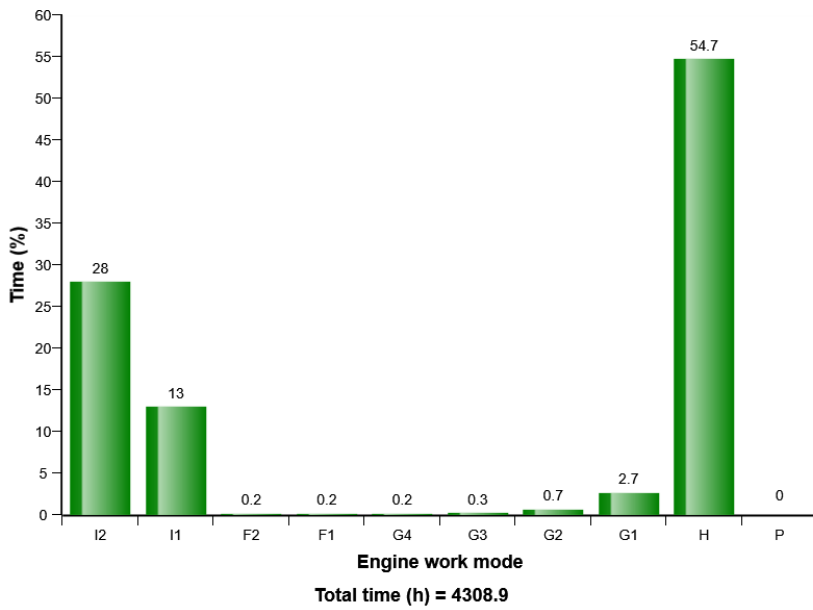


Machine model	SerialNo	Operating Hours	Reading Date
EC300E	310073	4308.6	11/09/2019

Engine boost air temperature distribution (h)

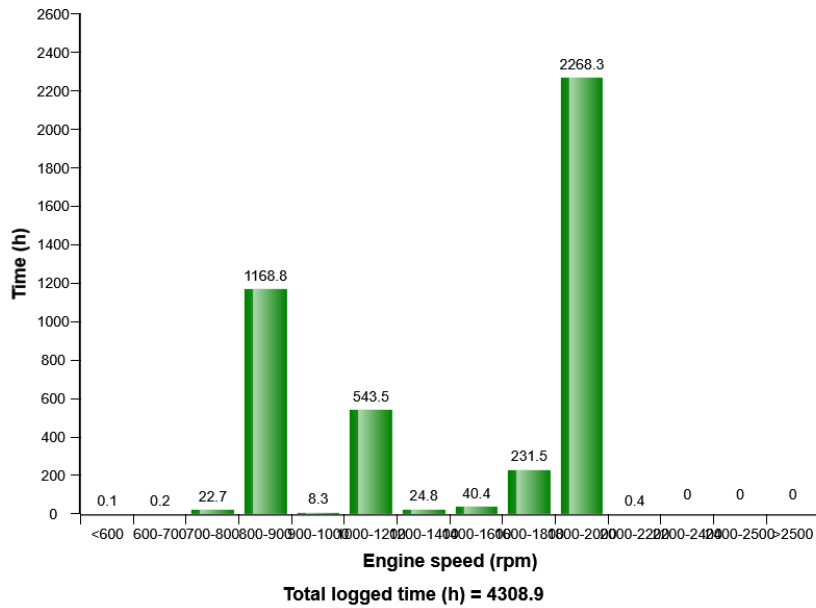


Engine work mode distribution(%)

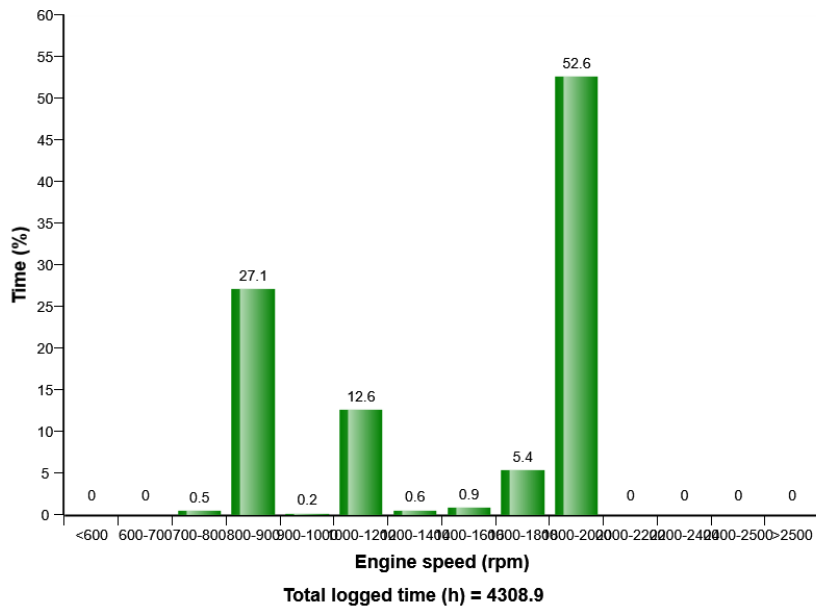


Machine model	SerialNo	Operating Hours	Reading Date
EC300E	310073	4308.6	11/09/2019

Engine speed, distribution (h)

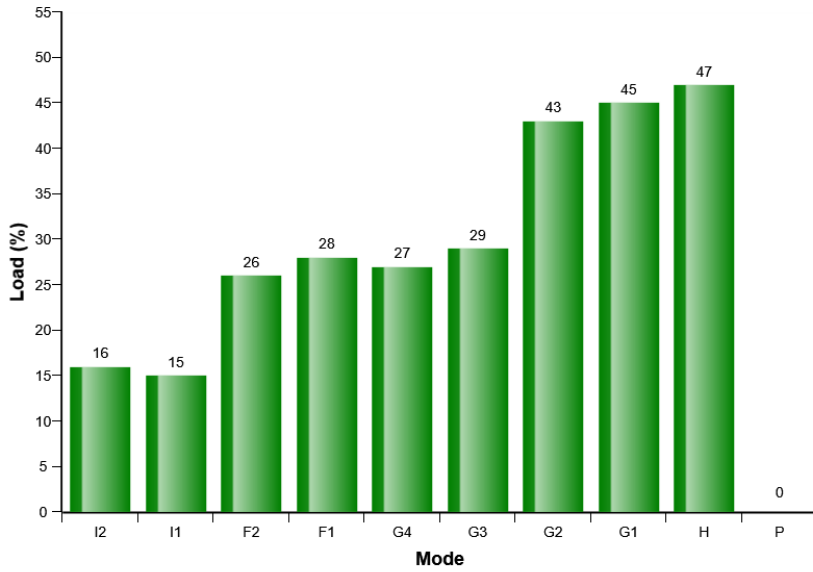


Engine speed, distribution (%)



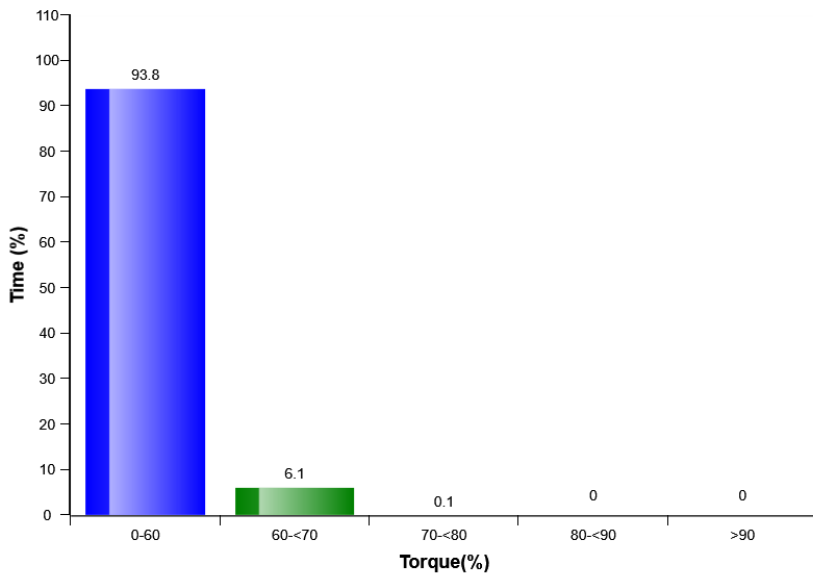
Machine model	SerialNo	Operating Hours	Reading Date
EC300E	310073	4308.6	11/09/2019

Average engine load per mode distribution (%)



Operating hours 4308.9

Engine load on "G,H,P" speed mode distribution (%)

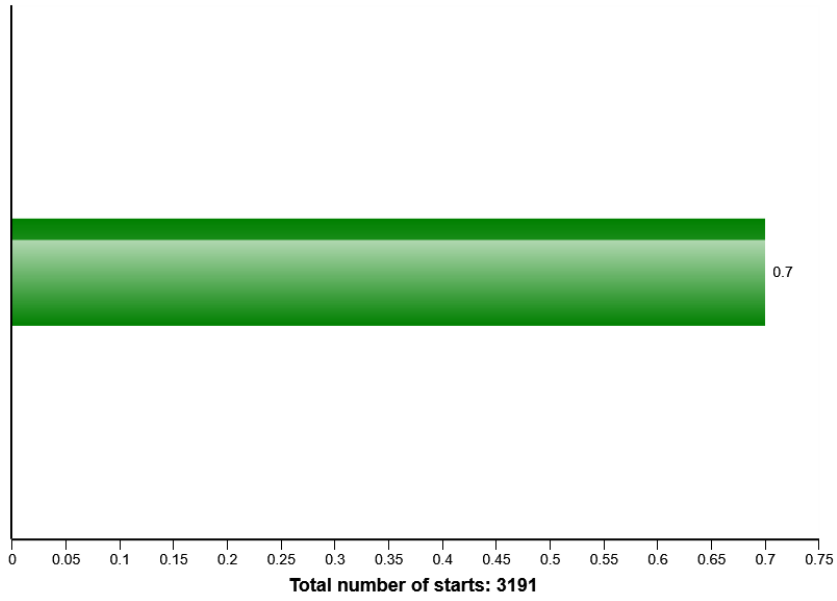


Engine time on "G,H,P" (h)= 2524.7
Total engine time (h)= 4308.9

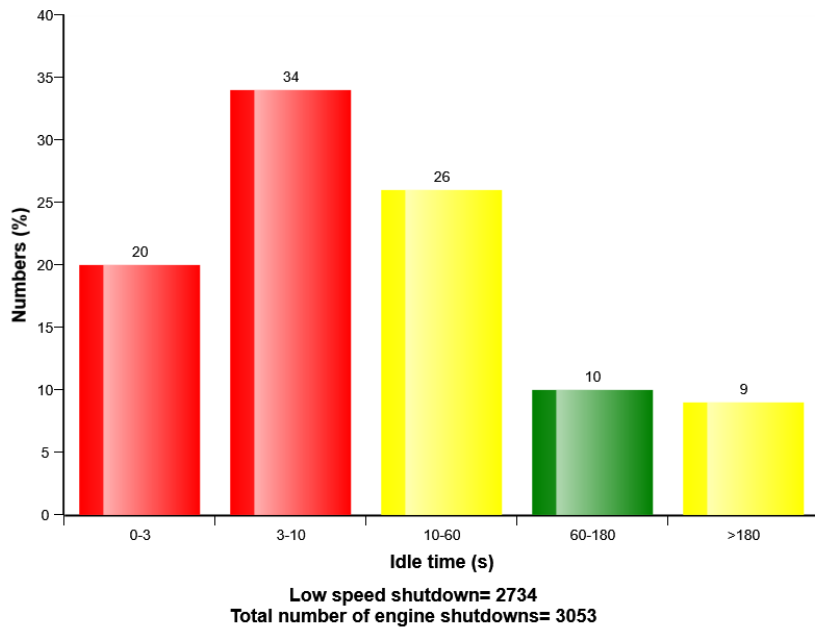


Machine model	SerialNo	Operating Hours	Reading Date
EC300E	310073	4308.6	11/09/2019

Average number of starts per hour

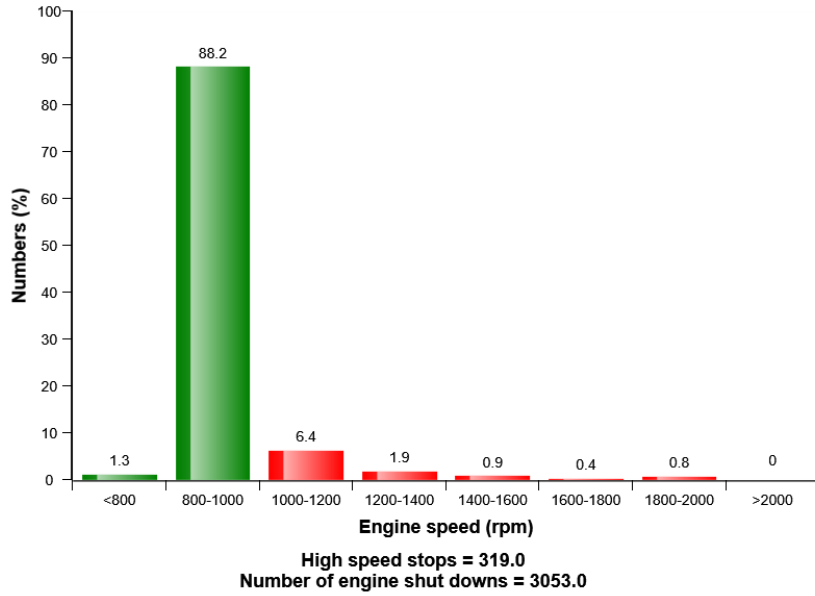


Idle time before shut down (%)

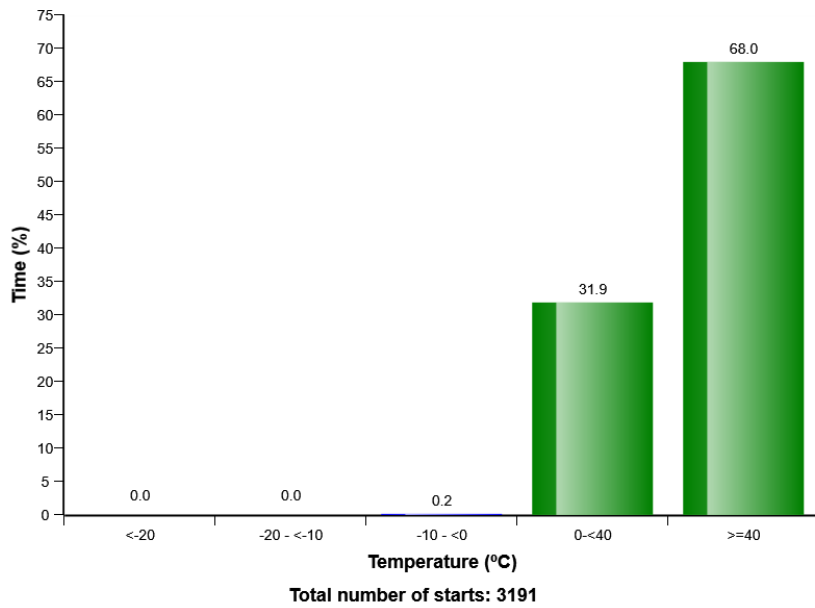


Machine model	SerialNo	Operating Hours	Reading Date
EC300E	310073	4308.6	11/09/2019

Engine shut down numbers per engine speed mode distribution (%)

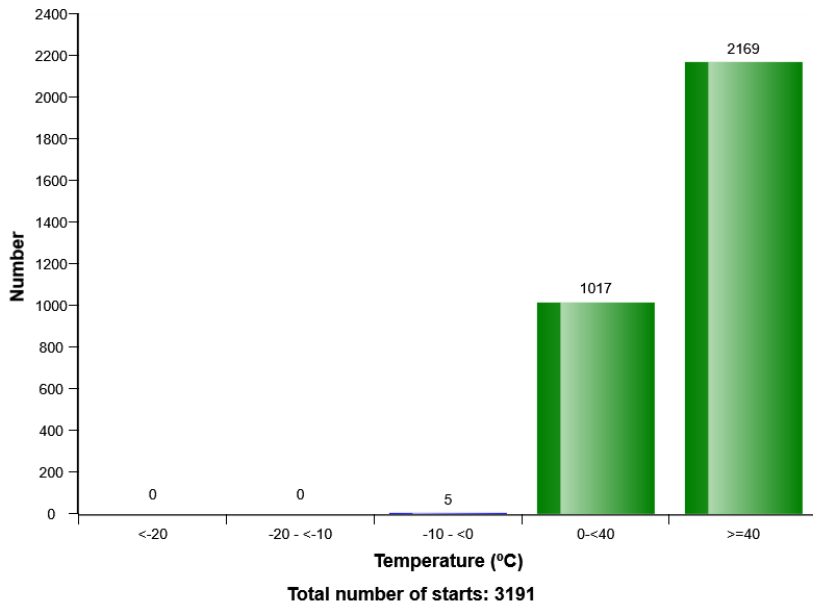


Start at different engine coolant temperatures (%)

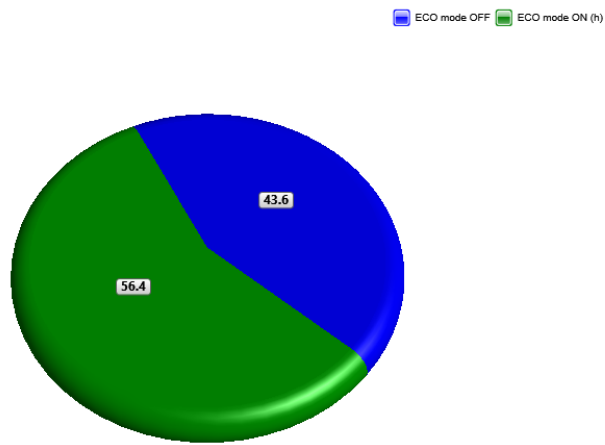


Machine model	SerialNo	Operating Hours	Reading Date
EC300E	310073	4308.6	11/09/2019

Start at different engine coolant temperatures



ECO mode distribution (%)



Machine model	SerialNo	Operating Hours	Reading Date
EC300E	310073	4308.6	11/09/2019

Low coolant level
Total number of occurrences = 2229

	Op hours	Year	Month	Day	Hour	Minute	Duration (minutes)
*	4302	2019	3	26	8	43	1
*	4303	2019	3	26	9	24	14
*	4303	2019	3	26	10	9	6
*	4303	2019	3	26	11	35	2
*	4303	2019	4	23	11	7	50
*	4304	2019	6	5	12	6	10
*	4304	2019	6	5	12	21	24
*	4305	2019	7	3	9	8	4
*	4305	2019	6	5	12	45	0
*	4305	2019	7	3	9	14	14
*	4305	2019	7	9	13	44	44
*	4306	2019	7	9	14	29	0
*	4306	2019	7	29	14	17	5
*	4307	2019	7	30	10	27	3
*	4307	2019	7	29	15	10	3
*	4307	2019	7	30	15	11	1
*	4307	2019	7	29	14	27	1
*	4307	2019	7	30	10	31	0
*	4307	2019	7	29	14	31	39
*	4307	2019	7	30	15	0	2



Machine model	SerialNo	Operating Hours	Reading Date
EC300E	310073	4308.6	11/09/2019

**Low engine oil level at start
Total number of occurrences = 0**

Op hours	Year	Month	Day	Hour	Minute
* 0	2000	0	0	0	0
* 0	2000	0	0	0	0
* 0	2000	0	0	0	0
* 0	2000	0	0	0	0
* 0	2000	0	0	0	0
* 0	2000	0	0	0	0
* 0	2000	0	0	0	0
* 0	2000	0	0	0	0
* 0	2000	0	0	0	0
* 0	2000	0	0	0	0
* 0	2000	0	0	0	0
* 0	2000	0	0	0	0
* 0	2000	0	0	0	0
* 0	2000	0	0	0	0
* 0	2000	0	0	0	0
* 0	2000	0	0	0	0
* 0	2000	0	0	0	0
* 0	2000	0	0	0	0
* 0	2000	0	0	0	0
* 0	2000	0	0	0	0
* 0	2000	0	0	0	0
* 0	2000	0	0	0	0
* 0	2000	0	0	0	0
* 0	2000	0	0	0	0
* 0	2000	0	0	0	0
* 0	2000	0	0	0	0
* 0	2000	0	0	0	0
* 0	2000	0	0	0	0
* 0	2000	0	0	0	0



Machine model	SerialNo	Operating Hours	Reading Date
EC300E	310073	4308.6	11/09/2019

Low engine oil pressure
Total number of occurrences = 2560

Op hours	Year	Month	Day	Hour	Minute	Duration (sec)	Extreme (bar)
1562	2013	10	6	15	110	3	0
1808	2014	16	6	15	131	2	0
3330	2010	12	6	15	120	3	0
4376	2016	16	6	15	132	1	2
5635	2013	10	6	15	110	1	2
6912	2007	11	6	15	111	4	0
7194	2013	15	6	15	128	4	0
7215	2008	12	6	15	119	4	0
7736	2016	16	6	15	132	4	0
8226	2013	16	6	15	131	4	0
9239	2012	11	6	15	114	3	0
12069	2008	11	6	15	111	4	0
12332	2012	10	6	15	110	4	0
12554	2012	12	6	15	122	2	1
12852	2008	12	6	15	119	2	0
12854	2007	11	6	15	111	2	0
13573	2007	15	6	15	124	3	0
14104	2014	11	6	15	116	4	0
14870	2007	11	6	15	111	2	0
14902	2015	16	6	15	131	4	0



Machine model	SerialNo	Operating Hours	Reading Date
EC300E	310073	4308.6	11/09/2019

Regeneration aborted
Total number of occurrences = 11

Op hours	Year	Month	Day	Hour	Minute	Reason
* 0	2000	0	0	0	0	0
* 0	2000	0	0	0	0	0
* 0	2000	0	0	0	0	0
* 0	2000	0	0	0	0	0
* 0	2000	0	0	0	0	0
* 0	2000	0	0	0	0	0
* 0	2000	0	0	0	0	0
* 0	2000	0	0	0	0	0
* 0	2000	0	0	0	0	0
* 0	2000	0	0	0	0	0
* 1036	2015	7	29	15	57	2
* 1036	2015	7	29	16	50	2
* 1036	2015	7	29	16	48	2
* 1036	2015	7	29	16	12	2
* 1037	2015	7	29	18	45	2
* 1037	2015	7	29	16	58	1
* 1038	2015	7	29	19	3	2
* 1501	2016	4	19	13	0	2
* 3390	2018	4	20	11	7	1
* 4035	2018	11	16	15	48	2
* 4039	2018	11	17	11	11	2



Machine model	SerialNo	Operating Hours	Reading Date
EC300E	310073	4308.6	11/09/2019

Regeneration ignored
Total number of occurrences = 1559

	Op hours	Year	Month	Day	Hour	Minute	Duration (min)
*	1037	2015	7	29	17	48	19
*	1037	2015	7	29	18	9	37
*	1037	2015	7	29	18	47	2
*	1038	2015	7	30	8	16	23
*	1038	2015	7	29	18	56	7
*	1038	2015	7	29	19	9	2
*	1038	2015	7	29	19	19	2
*	1038	2015	7	30	8	42	92
*	1040	2015	7	30	11	5	52
*	1501	2016	4	19	12	42	60
*	1954	2017	1	30	9	35	41
*	2507	2017	5	30	13	19	48
*	3060	2018	1	10	15	47	80
*	3389	2018	4	20	10	43	24
*	3390	2018	4	20	11	8	42
*	3475	2018	5	10	10	43	50
*	4033	2018	11	16	14	20	140
*	4036	2018	11	16	16	57	59
*	4037	2018	11	17	8	38	290
*	4045	2018	11	19	8	41	288



Machine model	SerialNo	Operating Hours	Reading Date
EC300E	310073	4308.6	11/09/2019

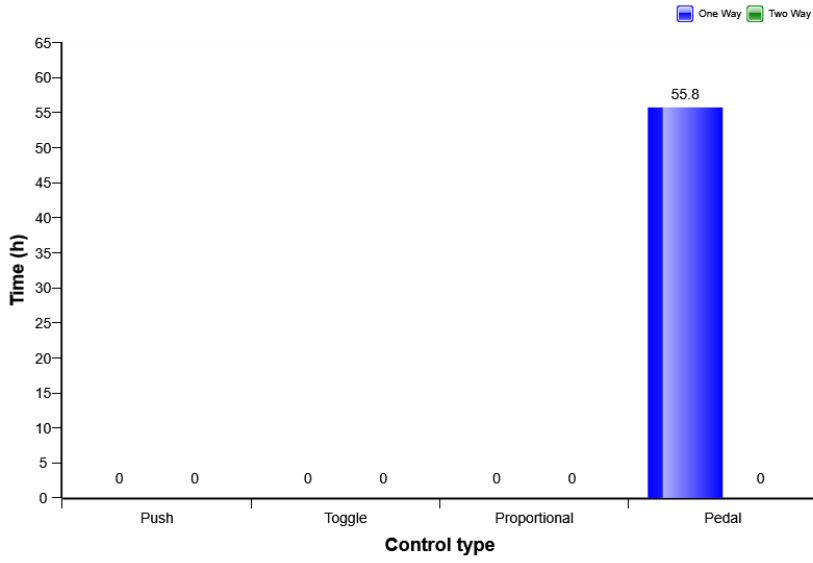
Regeneration duration
Total number of occurrences = 1044

	Op hours	Year	Month	Day	Hour	Minute	Duration (min)
*	901	2015	6	16	17	48	40
*	953	2015	7	14	11	52	40
*	1035	2015	7	29	15	21	35
*	1036	2015	7	29	16	12	36
*	1036	2015	7	29	16	50	0
*	1036	2015	7	29	16	53	5
*	1037	2015	7	29	18	15	31
*	1038	2015	7	29	18	58	5
*	1040	2015	7	30	11	17	40
*	1501	2016	4	19	12	45	57
*	1954	2017	1	30	9	35	41
*	2507	2017	5	30	13	31	35
*	3061	2018	1	10	16	27	40
*	3389	2018	4	20	10	43	24
*	3390	2018	4	20	11	9	41
*	3476	2018	5	10	10	54	40
*	4035	2018	11	16	15	48	1
*	4039	2018	11	17	10	46	26
*	4041	2018	11	17	12	48	40
*	4049	2018	11	19	12	49	40



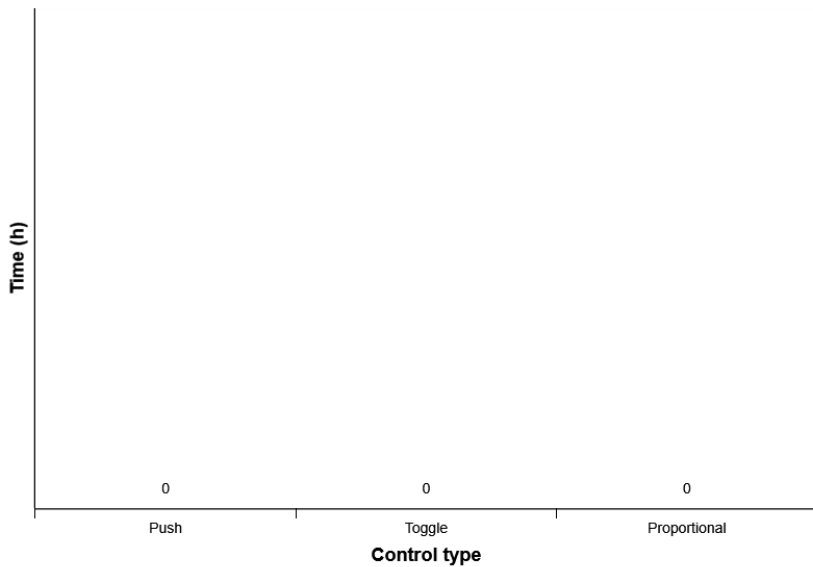
Machine model	SerialNo	Operating Hours	Reading Date
EC300E	310073	4308.6	11/09/2019

X1 control distribution



Total One way flow operating time (h) = 55.8
 Total Two way flow operating time (h) = 0.1

X3 Control distribution

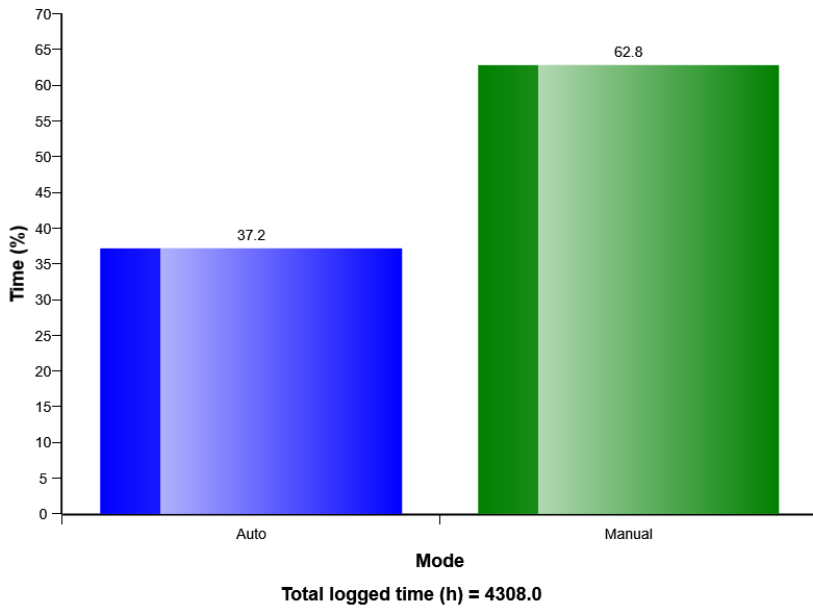


Total X3 Operating time (h) = 55.9

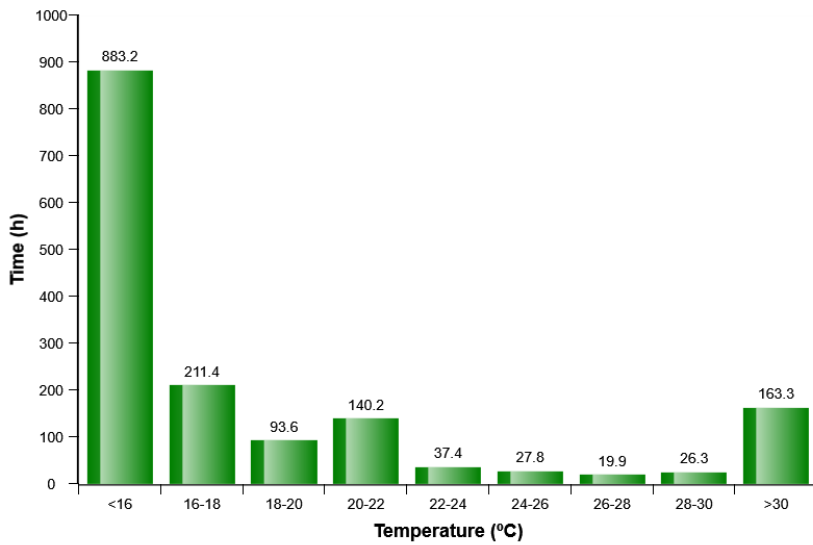


Machine model	SerialNo	Operating Hours	Reading Date
EC300E	310073	4308.6	11/09/2019

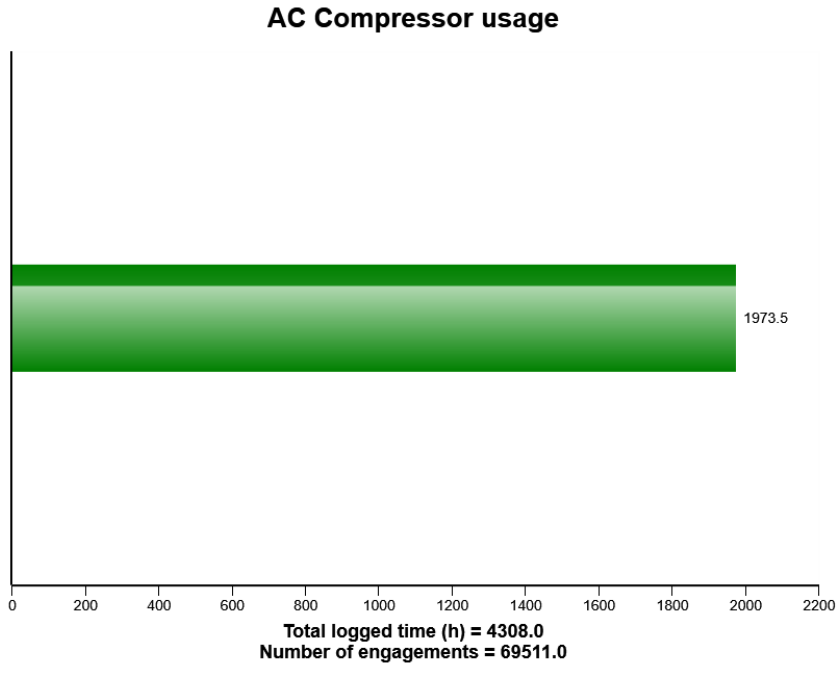
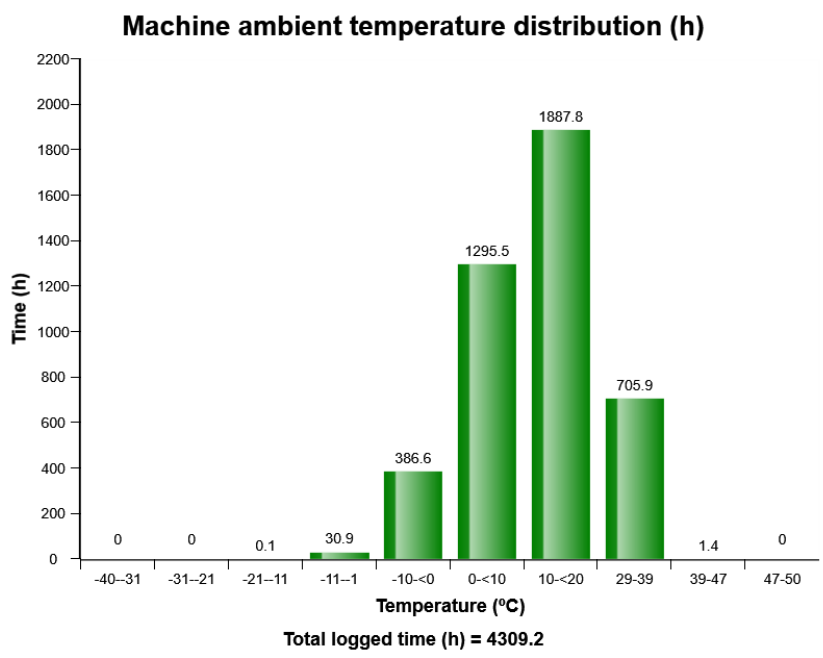
HVAC Auto - Manual mode selection distribution (%)



HVAC air temperature setting in auto control mode distribution (h)

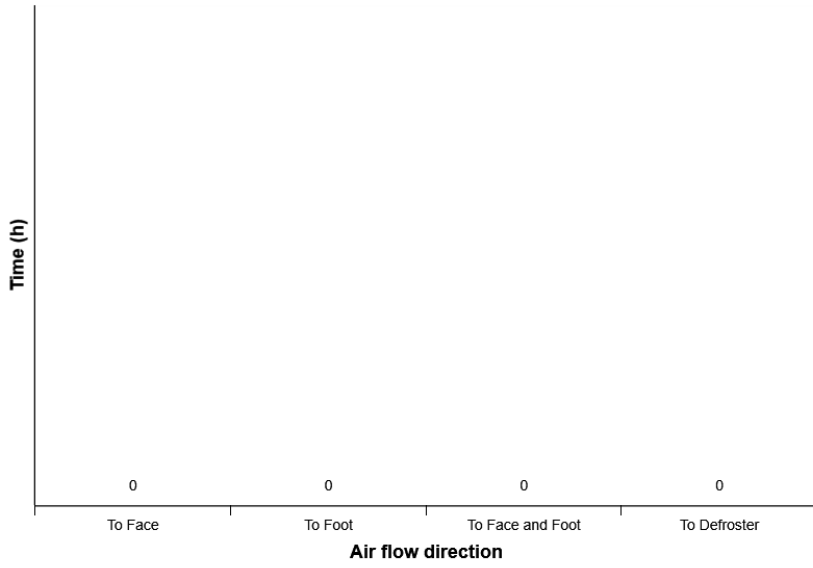


Machine model	SerialNo	Operating Hours	Reading Date
EC300E	310073	4308.6	11/09/2019

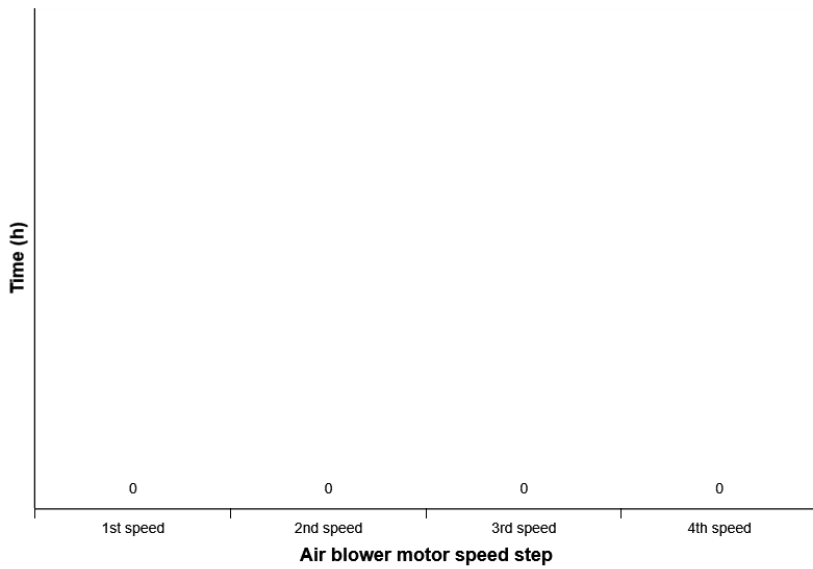


Machine model	SerialNo	Operating Hours	Reading Date
EC300E	310073	4308.6	11/09/2019

HVAC air flow direction in manual mode distribution (h)

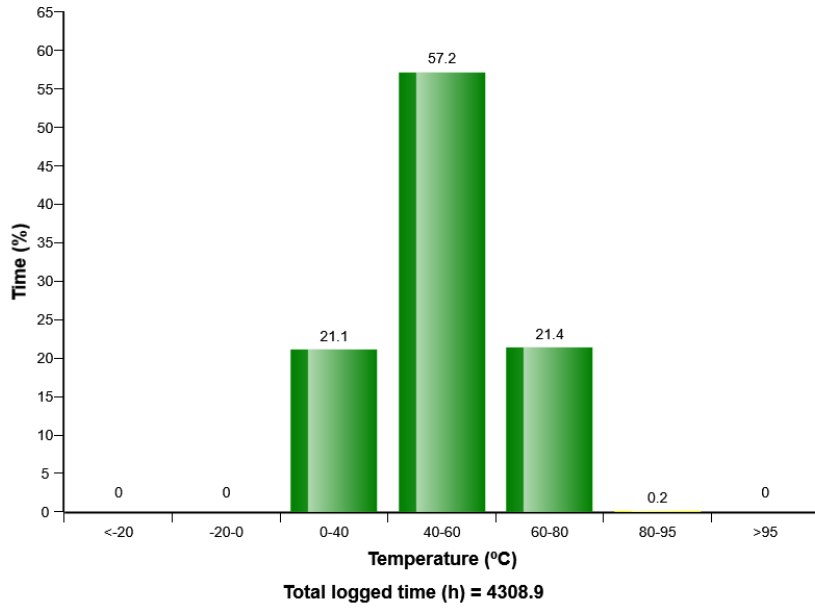


HVAC air blower motor speed in manual mode distribution (h)

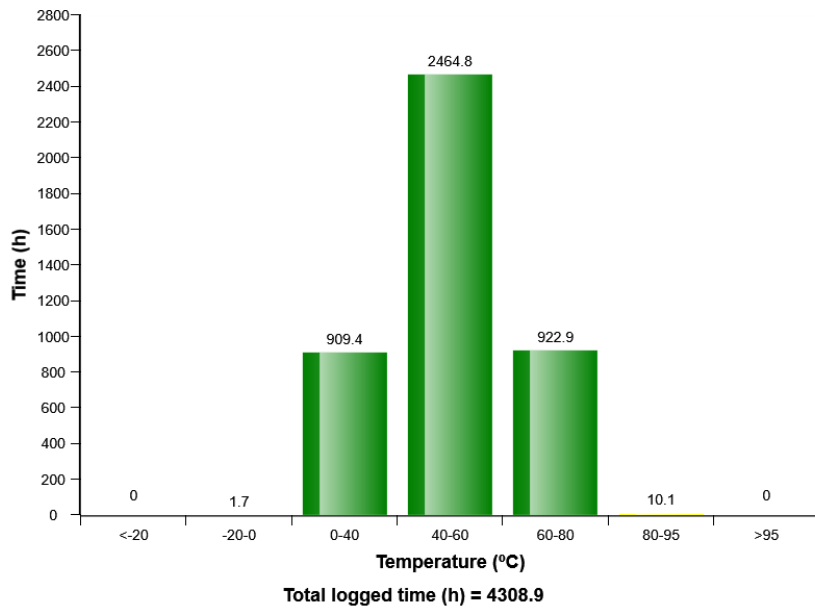


Machine model	SerialNo	Operating Hours	Reading Date
EC300E	310073	4308.6	11/09/2019

Hydraulic oil, temperature distribution (%)

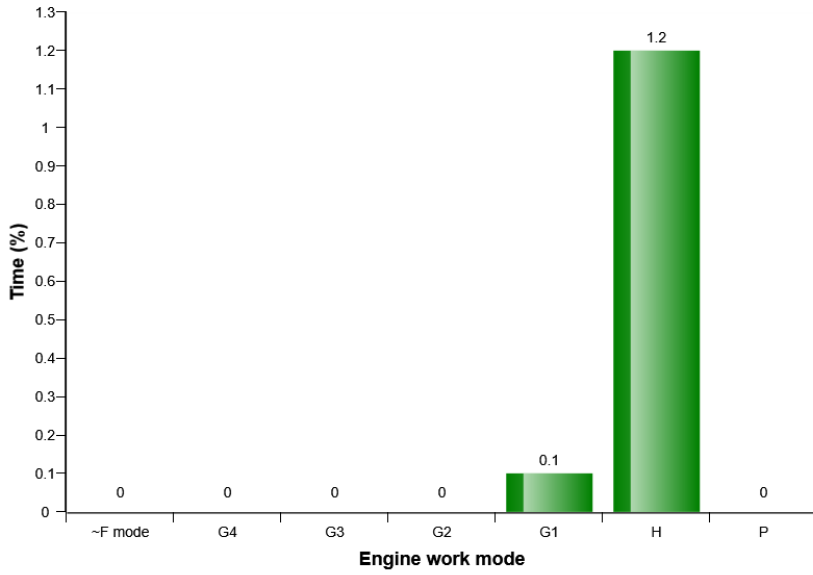


Hydraulic oil, temperature distribution (h)



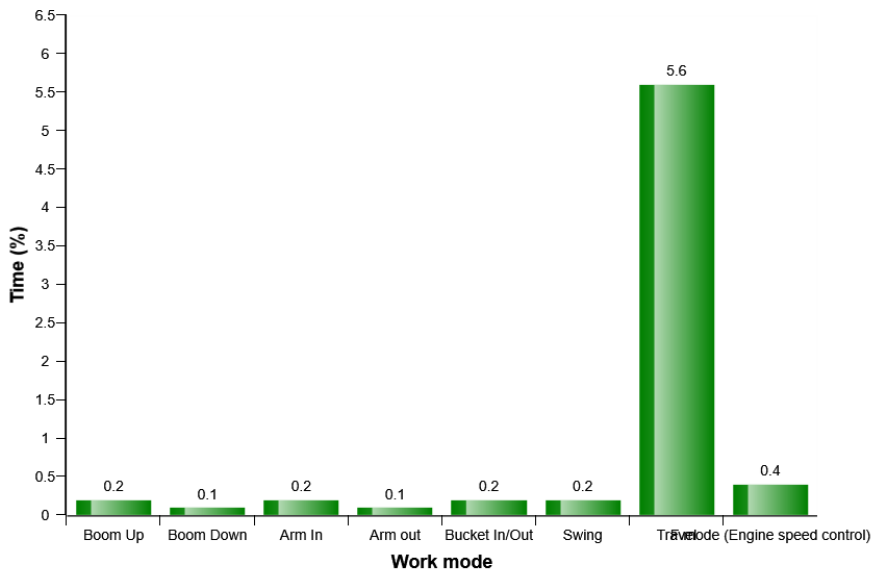
Machine model	SerialNo	Operating Hours	Reading Date
EC300E	310073	4308.6	11/09/2019

Hydraulic hammer/shear, operating distribution on mode(%)



Hydraulic hammer/shear (h) = 55.9
Total logged time (h) = 4308.9

Hydraulic Power boosted working operation distribution (%)

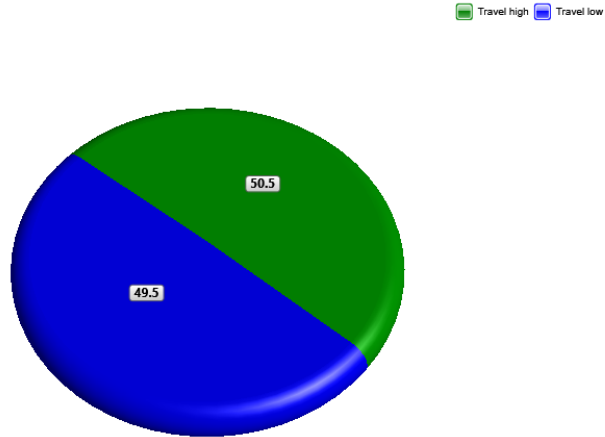


Boost and solenoid ON (h) = 11.9
Boost solenoid ON, F mode (h) = 18.5



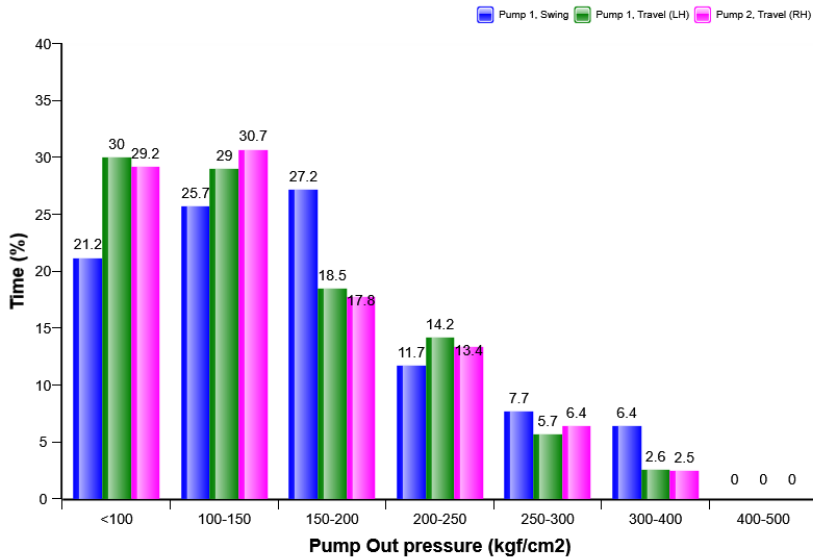
Machine model	SerialNo	Operating Hours	Reading Date
EC300E	310073	4308.6	11/09/2019

Travel speed, high/low (%)



Total travel time (h) = 428.6
 Travel time / Operating hours (%) = 9.9

Pump pressure on travel and swing distribution (%)

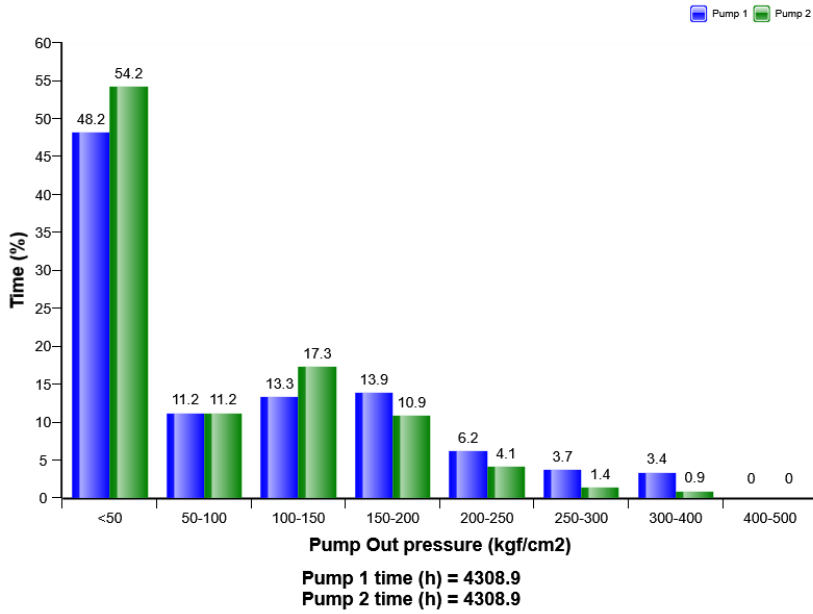


Swing time (h) = 1608.3
 Travel (RH) time (h) = 402.9

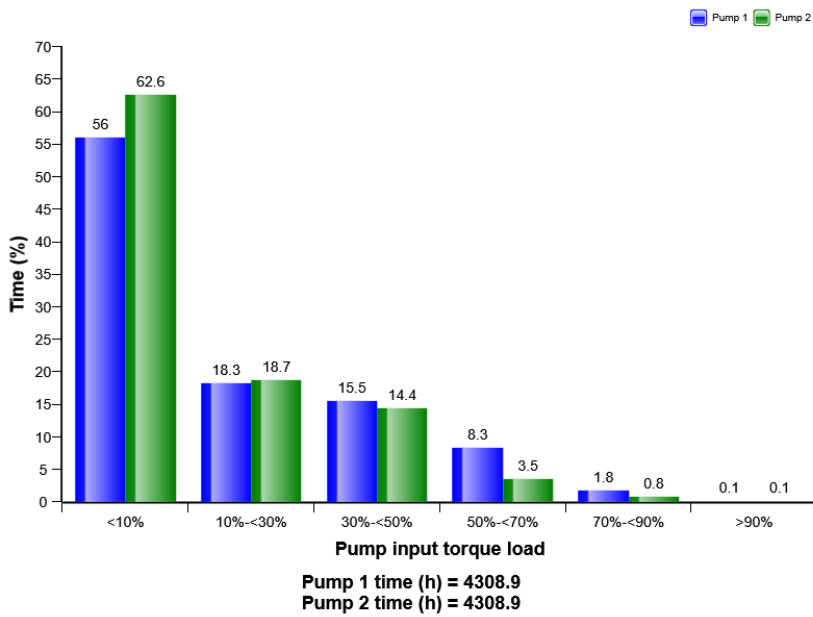


Machine model	SerialNo	Operating Hours	Reading Date
EC300E	310073	4308.6	11/09/2019

Pump pressure overall distribution (%)

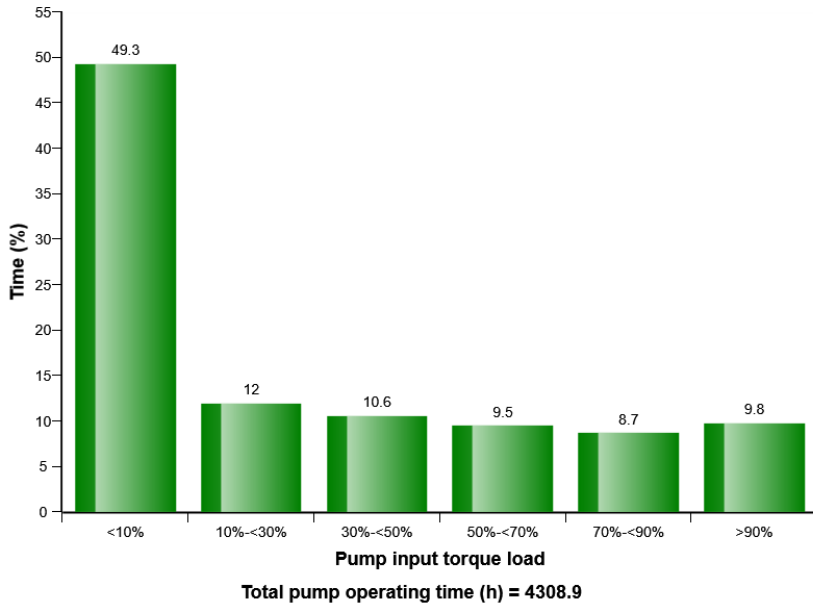


Pump input torque overall distribution (%)

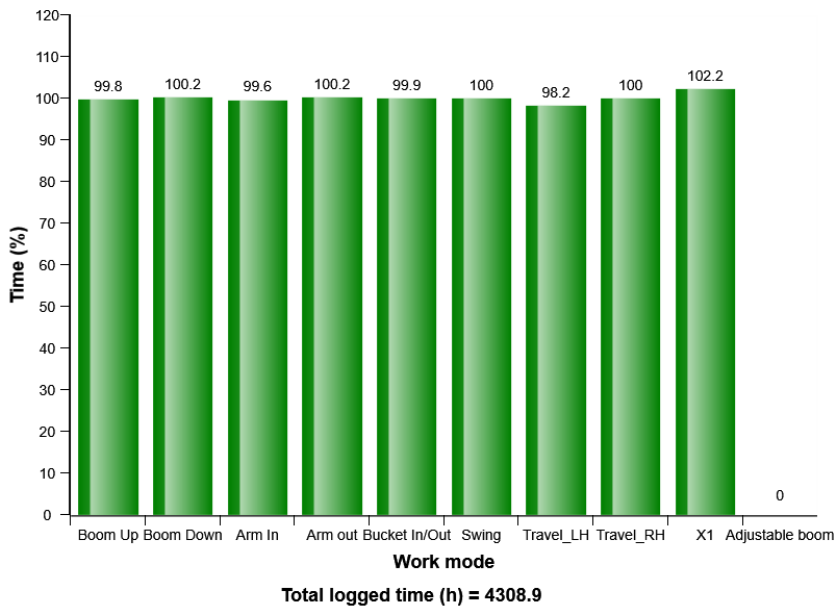


Machine model	SerialNo	Operating Hours	Reading Date
EC300E	310073	4308.6	11/09/2019

Pump torque load for 2 pump interaction distribution (%)

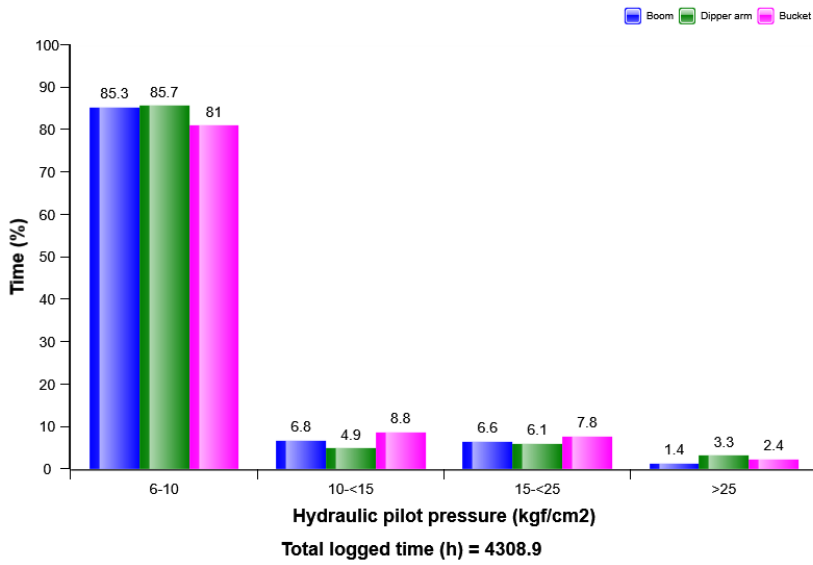


Hydraulic working mode distribution (%)

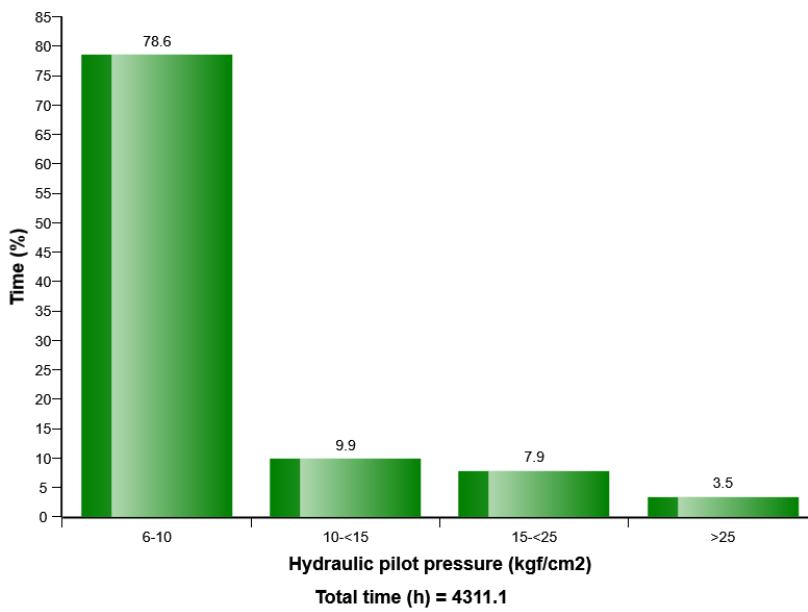


Machine model	SerialNo	Operating Hours	Reading Date
EC300E	310073	4308.6	11/09/2019

Hydraulic pilot pressure on bucket, boom and arm operation distribution (%)



Hydraulic pilot pressure on swing operation distribution (%)



Machine model	SerialNo	Operating Hours	Reading Date
EC300E	310073	4308.6	11/09/2019

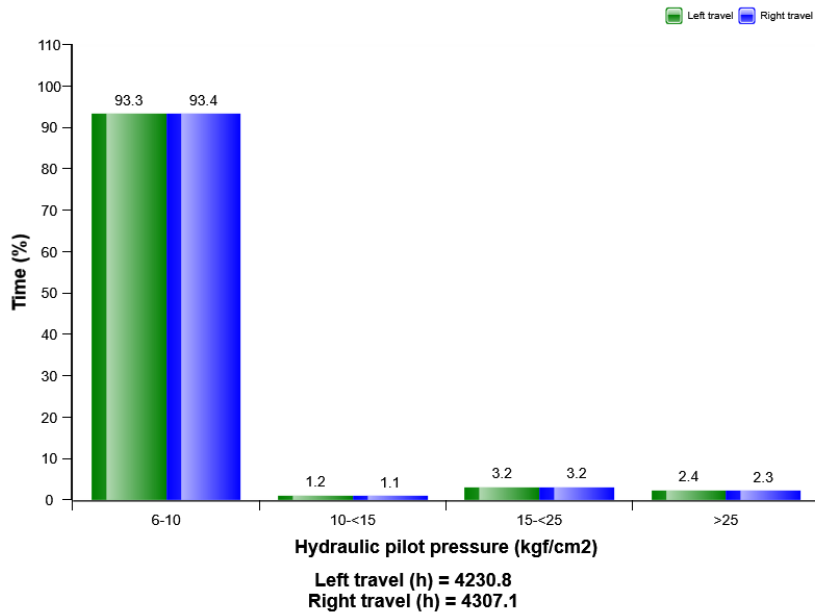
**High hydraulic oil temperature
Total number of occurences = 0**

Op hours	Year	Month	Day	Hour	Minute	Duration (seconds)	Extreme (° C)
0	2000	0	0	0	0	0	0
0	2000	0	0	0	0	0	0
0	2000	0	0	0	0	0	0
0	2000	0	0	0	0	0	0
0	2000	0	0	0	0	0	0
0	2000	0	0	0	0	0	0
0	2000	0	0	0	0	0	0
0	2000	0	0	0	0	0	0
0	2000	0	0	0	0	0	0
0	2000	0	0	0	0	0	0
0	2000	0	0	0	0	0	0
0	2000	0	0	0	0	0	0
0	2000	0	0	0	0	0	0
0	2000	0	0	0	0	0	0
0	2000	0	0	0	0	0	0
0	2000	0	0	0	0	0	0
0	2000	0	0	0	0	0	0
0	2000	0	0	0	0	0	0
0	2000	0	0	0	0	0	0
0	2000	0	0	0	0	0	0
0	2000	0	0	0	0	0	0
0	2000	0	0	0	0	0	0

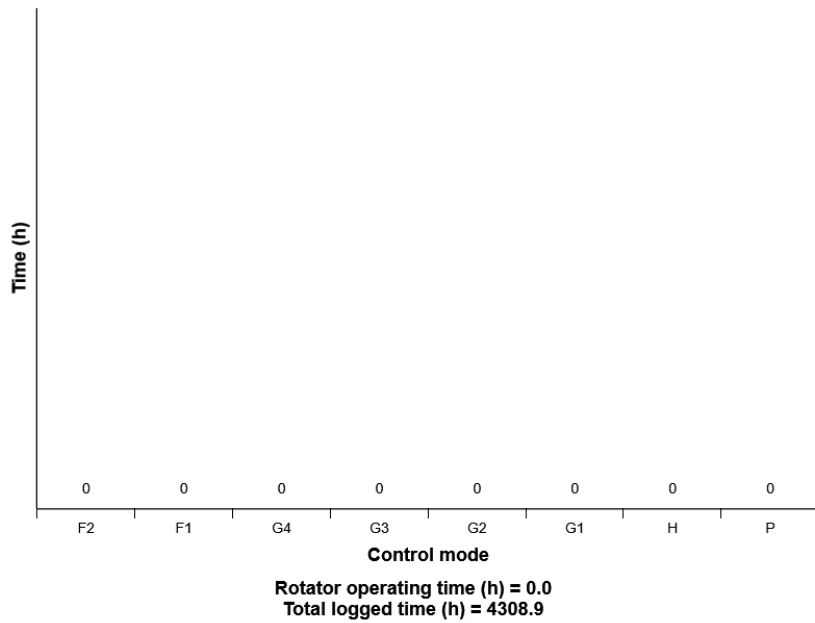


Machine model	SerialNo	Operating Hours	Reading Date
EC300E	310073	4308.6	11/09/2019

Hydraulic pilot pressure on travel operation distribution (%)



Rotator operation on engine speed mode distribution (h)



Machine model	SerialNo	Operating Hours	Reading Date
EC300E	310073	4308.6	11/09/2019

X1 hydraulic oil flow control distribution

