

Lessee: Sonny Glasbrenner, Inc.
Contract: 502-7710204-001

Unit: 2016 Volvo L110H

UNIT # 631105
Location: Flagler Construction
Equipment, Tampa FL



SPECIFICATIONS

VIN	631105
LeaseInspector ID #	631105
Year	2016
Model	Volvo L110H
Location City	Tampa
Location State	FL
General Specifications	
New Hours	2595
Old Hours	2593

Lessee: Sonny Glasbrenner, Inc.
Contract: 502-7710204-001

Unit: 2016 Volvo L110H

UNIT # 631105
Location: Flagler Construction
Equipment, Tampa FL

ADDITIONAL FEATURES OF THIS VEHICLE
COMMENTS

Appraiser Comments:

Creditor Comments:

Public Comments:

Starts/Runs: Yes

Overall: Fair

Lessee: Sonny Glasbrenner, Inc.
Contract: 502-7710204-001

Unit: 2016 Volvo L110H

UNIT # 631105
Location: Flagler Construction
Equipment, Tampa FL

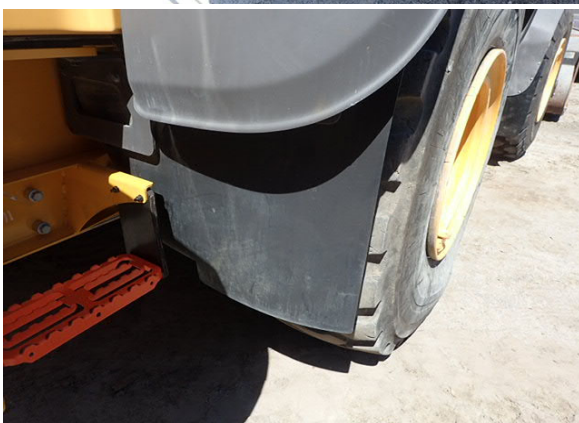
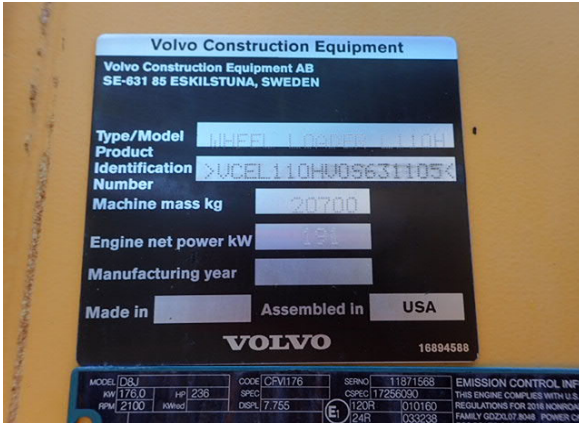
DEFICIENCY REVIEW

ITEM	QTY PRICE
1. Clean Machine Inside, Out, Engine, Undercarriage- Done	\$0.00
2. Front and Right rear Mudflap Damaged- Replaced	\$0.00
3. Dealer to Determine is Service is Due- Up to Date	\$0.00
4. Dealer to Verify Tire Cuts are Cosmetic Only- Verified	\$0.00
5. Batteries Dead- Had to Jump Start- Rear	\$0.00
6. Bucket Cutting Edge Worn and Damaged- Replaced	\$0.00
7. Right Rear Tire Lower Air Pressure- Repaired	\$0.00
8. Left Rear, Right Rear, Right Front Tires Gouged- Verified	\$0.00
9. Right Step Brackets Bent- Repaired	\$0.00
10. Both Rear Steps Missing- Replaced	\$0.00
Total	\$0.00

Lessee: Sonny Glasbrenner, Inc.
Contract: 502-7710204-001

Unit: 2016 Volvo L110H

UNIT # 631105
Location: Flagler Construction
Equipment, Tampa FL



Lessee: Sonny Glasbrenner, Inc.
Contract: 502-7710204-001

Unit: 2016 Volvo L110H

UNIT # 631105
Location: Flagler Construction
Equipment, Tampa FL



Lessee: Sonny Glasbrenner, Inc.
Contract: 502-7710204-001

Unit: 2016 Volvo L110H

UNIT # 631105
Location: Flagler Construction
Equipment, Tampa FL

