

VOLVO CONSTRUCTION EQUIPMENT MATRIS REPORT

Machine model L90H	SerialNo 624235	Operating Hours 2563.5	Reading Date 05/02/2020
Company name Asset Appraisal Services	Dealer	Report Issuer	
Contact name	Technician Tilden Swallow	Primary Application Rehandling	
Site	Workorder	Ground Condition	

MATRIS Reading, Summary / Recommendation



Machine model	SerialNo	Operating Hours	Reading Date
L90H	624235	2563.5	05/02/2020

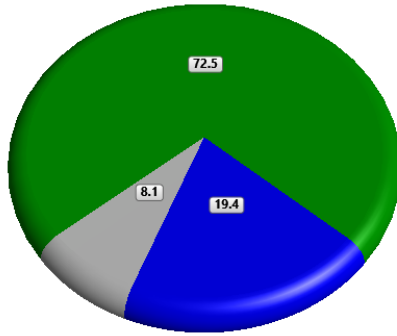
Main equipment	Type	Equipment
	Tyre size/class	
	Main Attachment	
	Extra Counterweight	
	Ballast	
	Chains	
	Boom Suspension System	
	Attachment Interface	
	Volume m3 (yd3) / Area m2 (ft2)	
	Attachment make	



Machine model	SerialNo	Operating Hours	Reading Date
L90H	624235	2563.5	05/02/2020

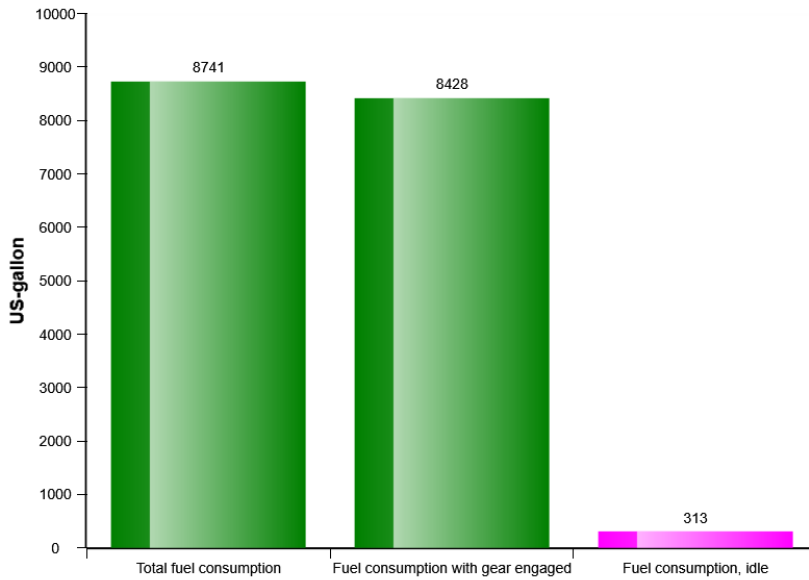
Machine utilization (%)

Machine in motion Machine in working mode Idling



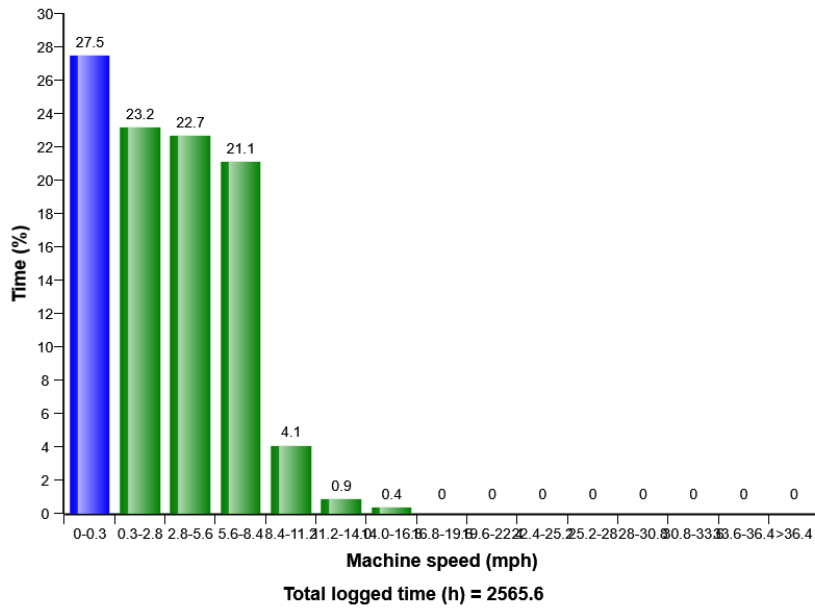
Total time (h) = 2565.6

Fuel consumption

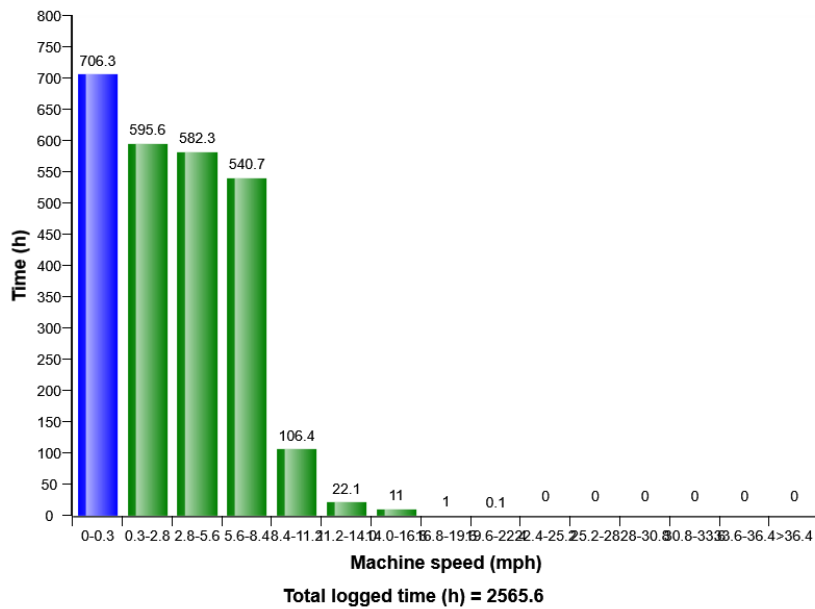


Machine model	SerialNo	Operating Hours	Reading Date
L90H	624235	2563.5	05/02/2020

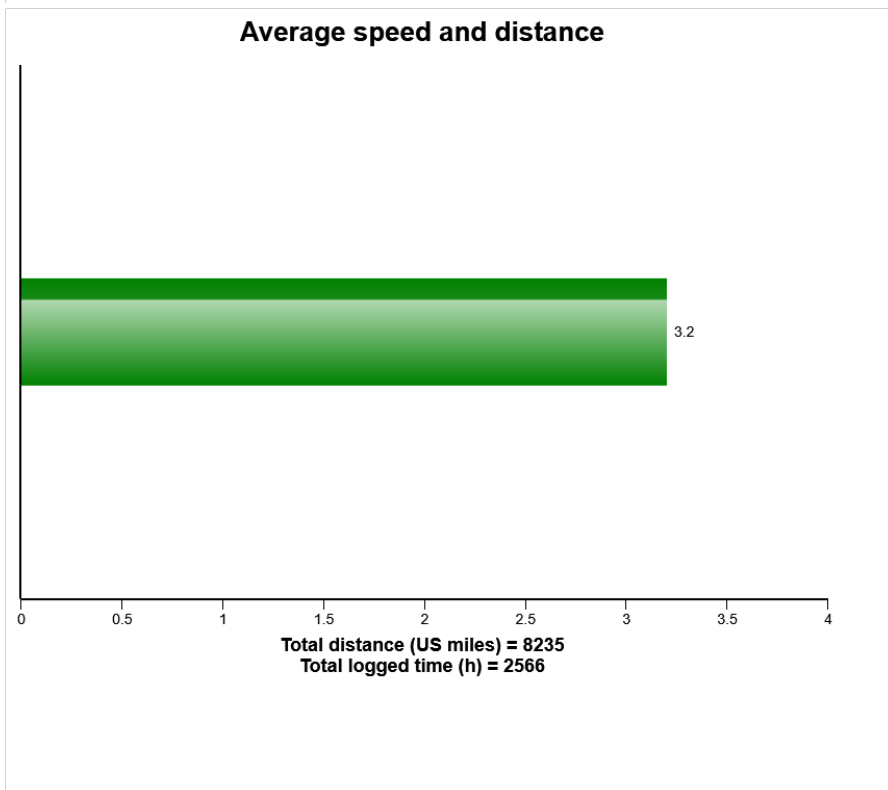
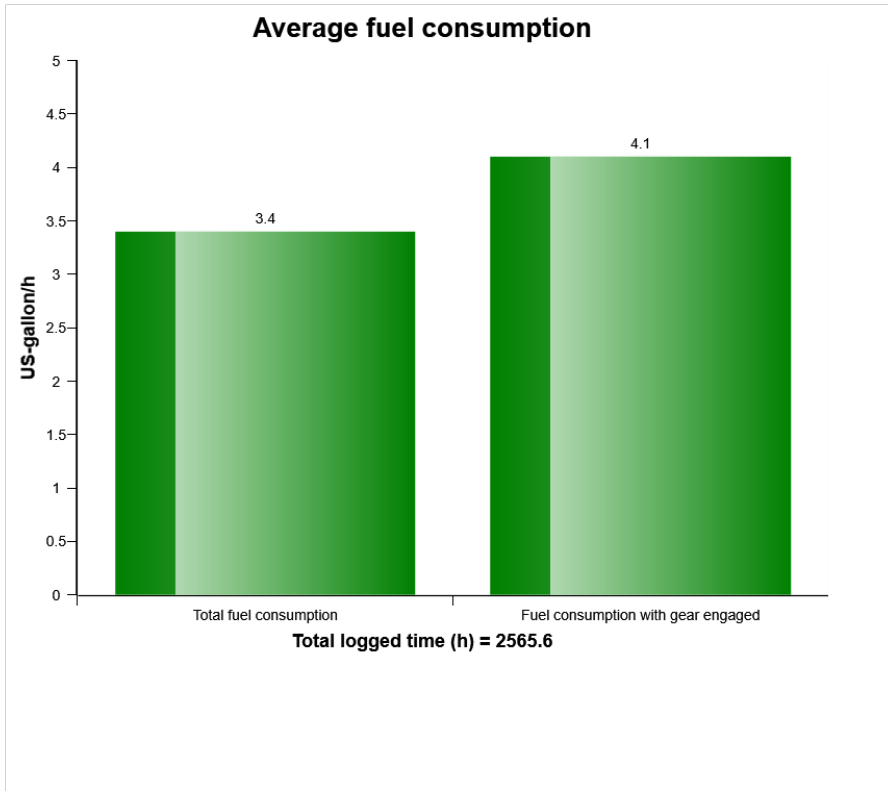
Machine speed, distribution (%)



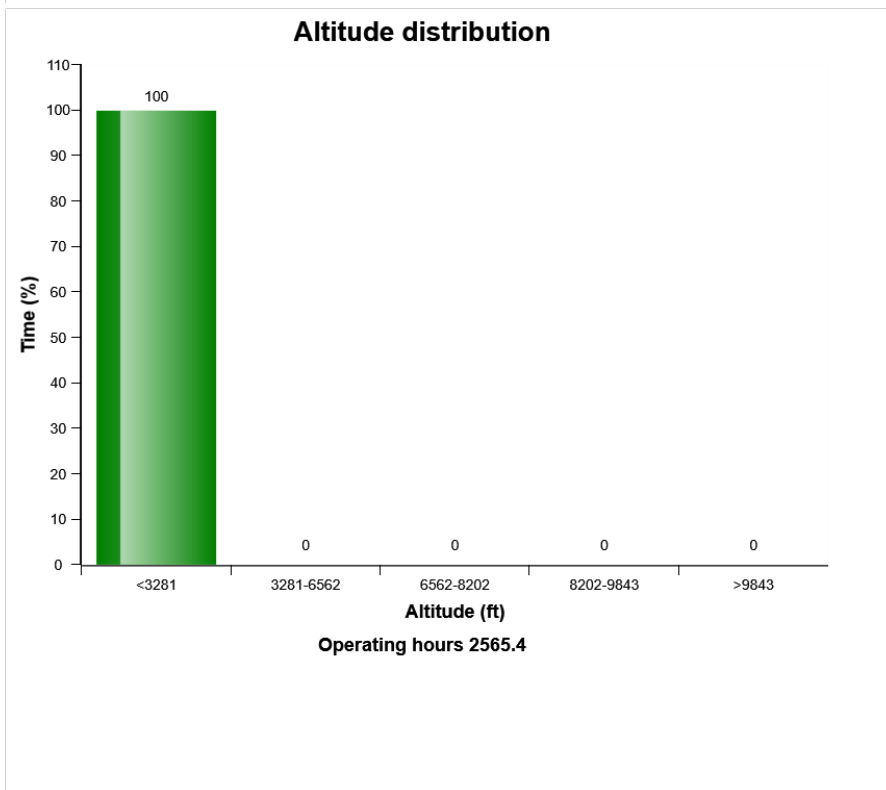
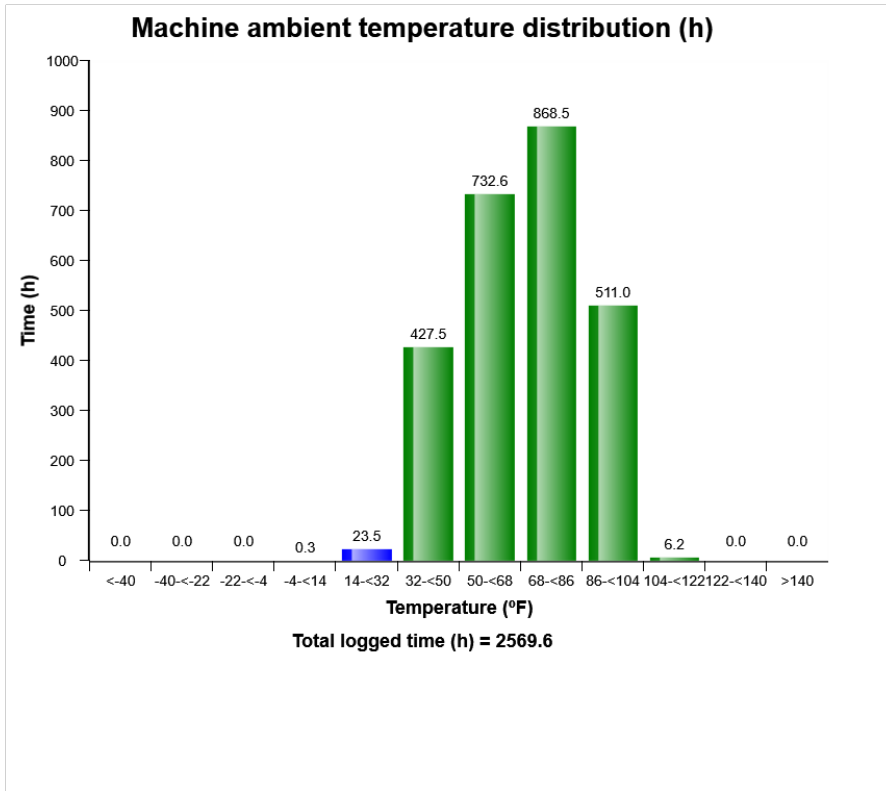
Machine speed, distribution



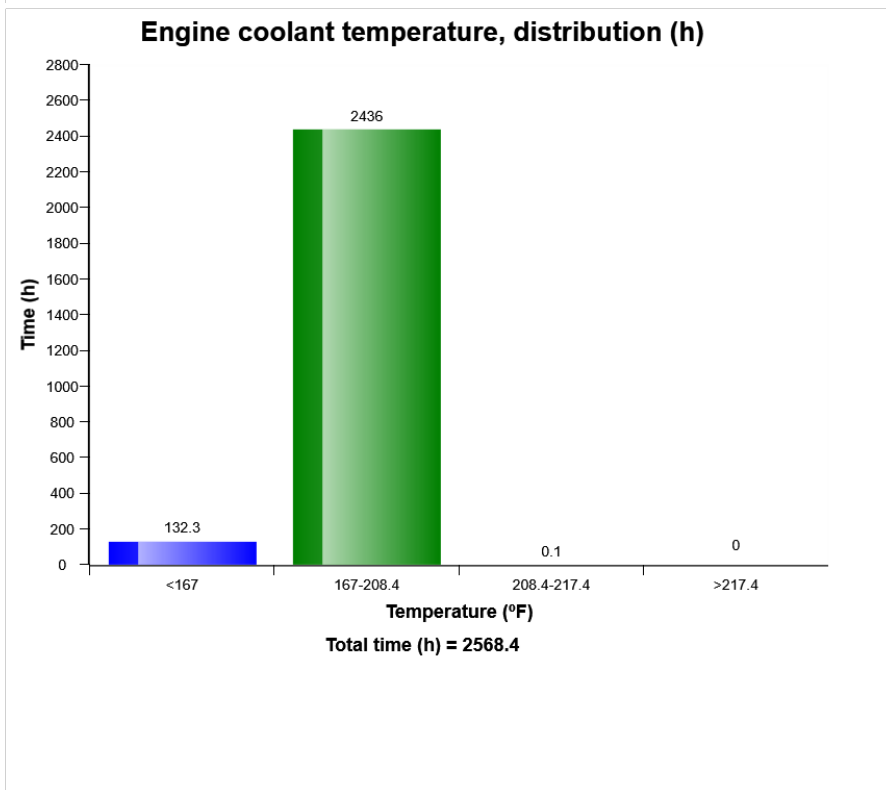
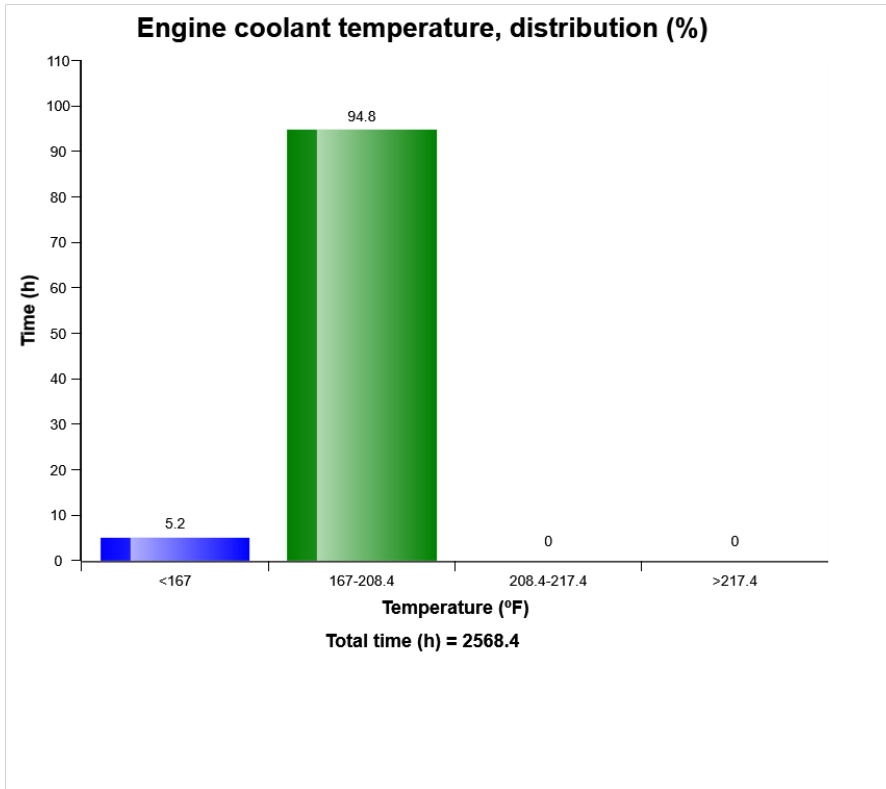
Machine model	SerialNo	Operating Hours	Reading Date
L90H	624235	2563.5	05/02/2020



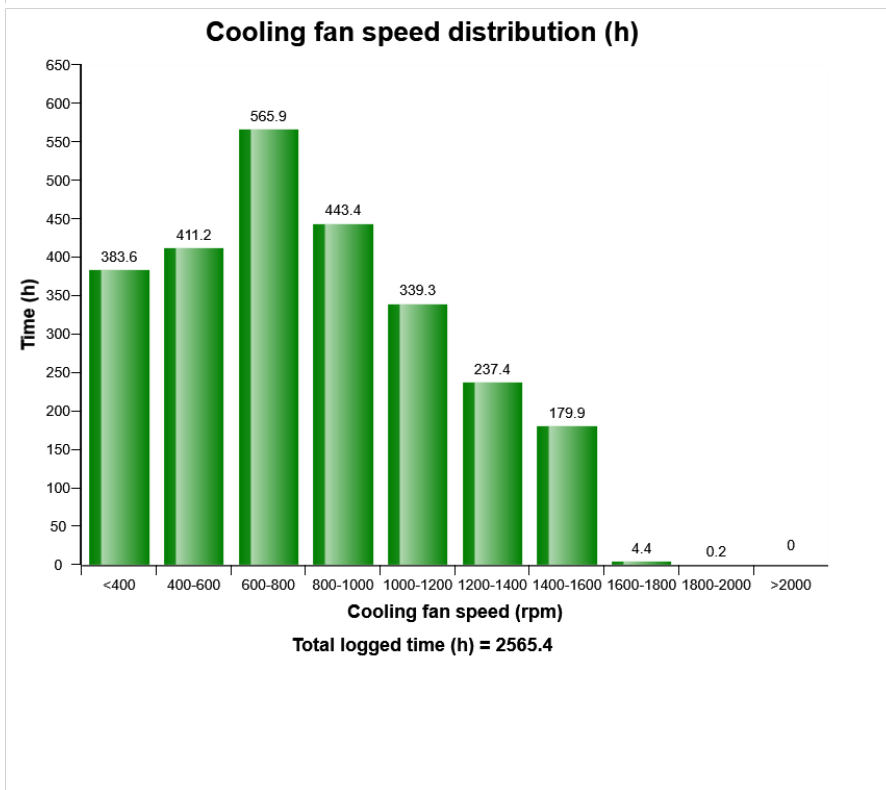
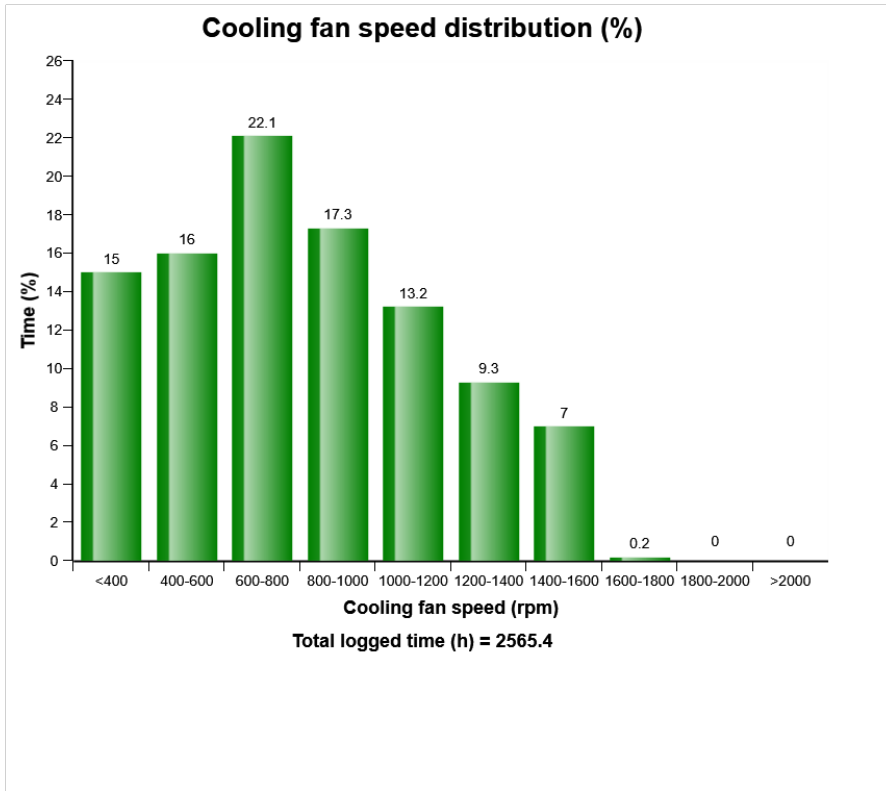
Machine model	SerialNo	Operating Hours	Reading Date
L90H	624235	2563.5	05/02/2020



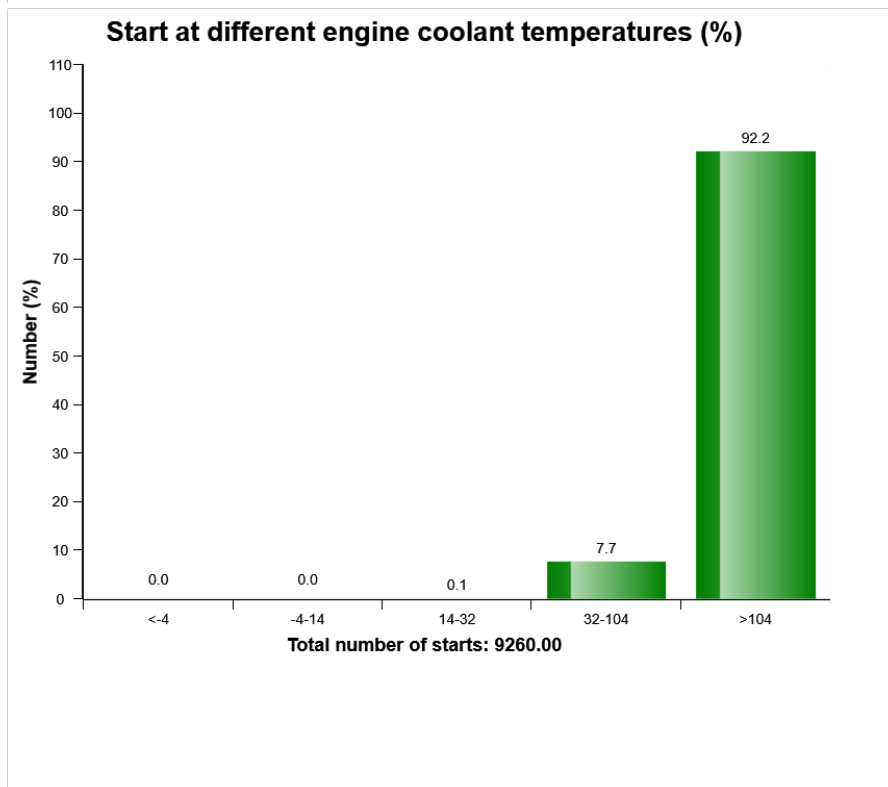
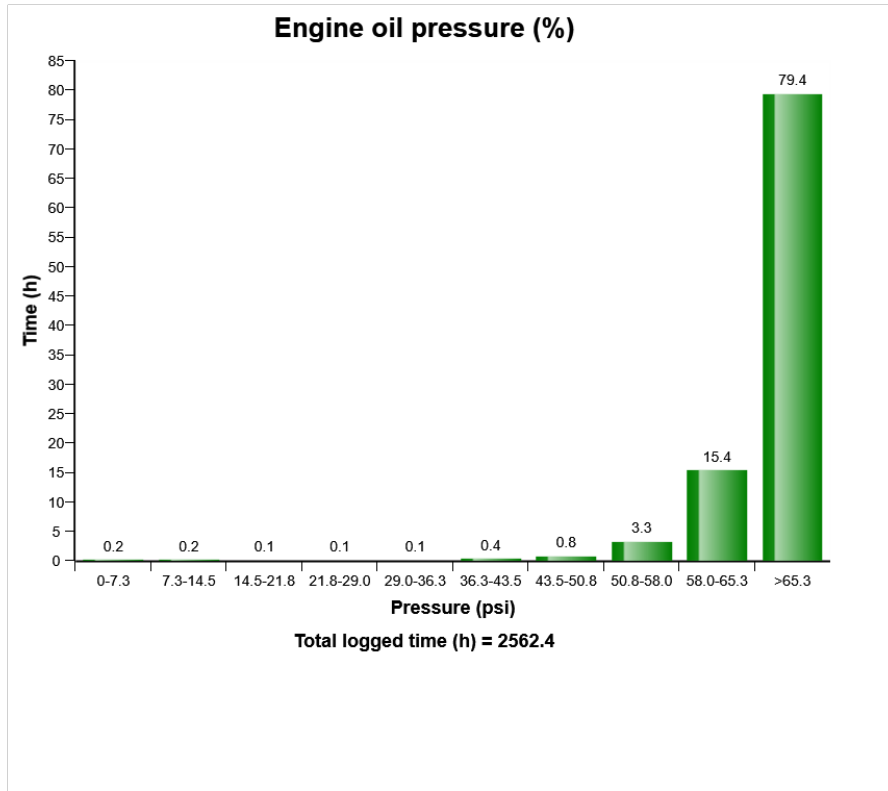
Machine model	SerialNo	Operating Hours	Reading Date
L90H	624235	2563.5	05/02/2020



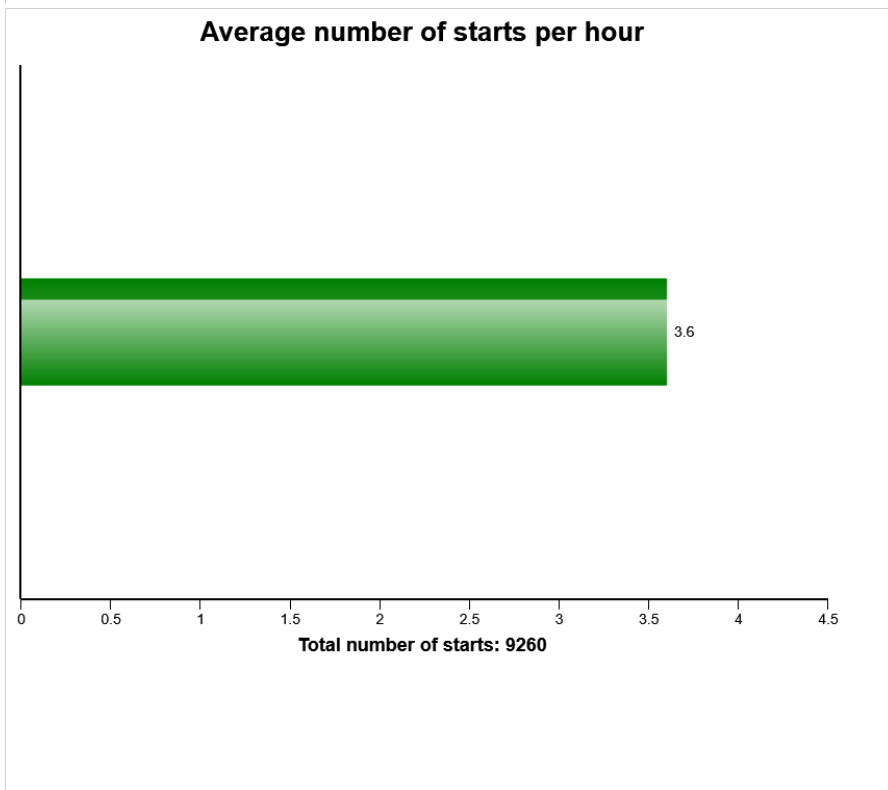
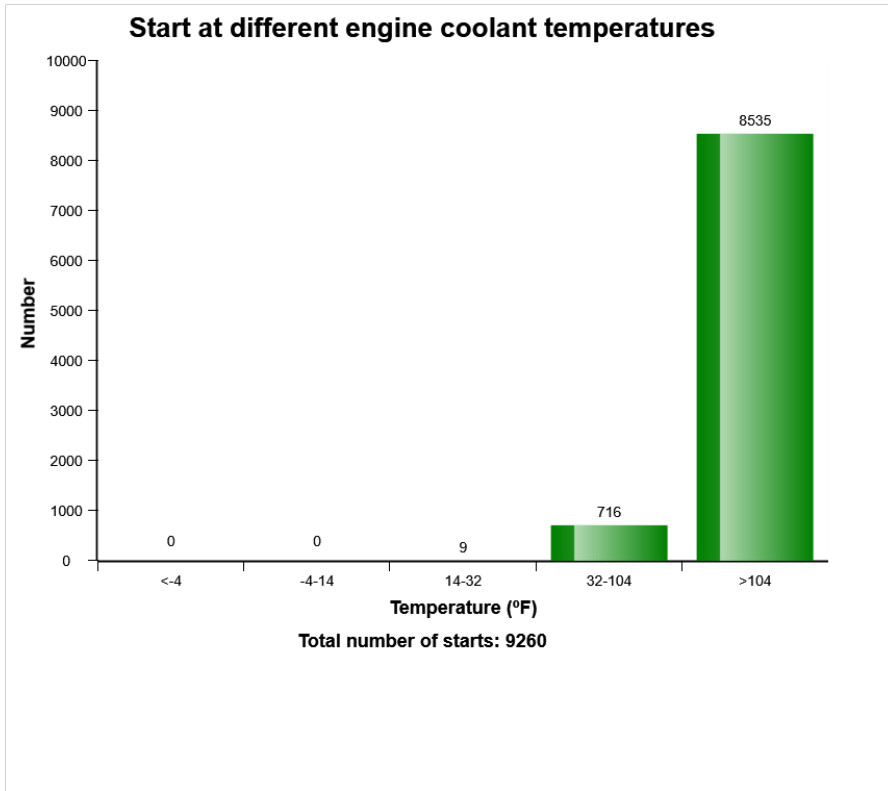
Machine model	SerialNo	Operating Hours	Reading Date
L90H	624235	2563.5	05/02/2020



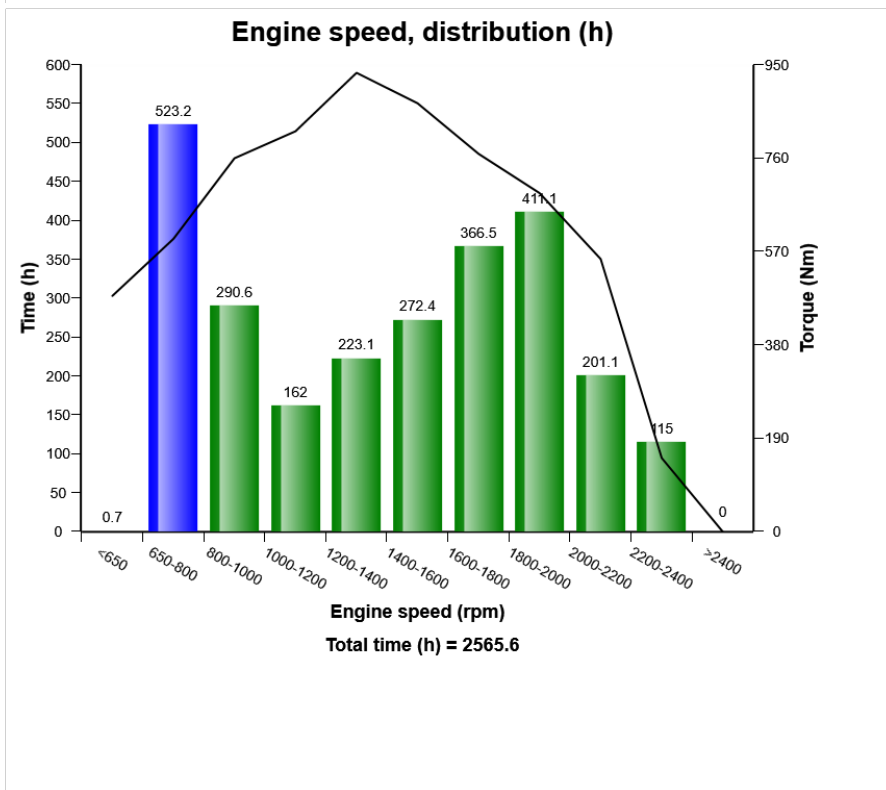
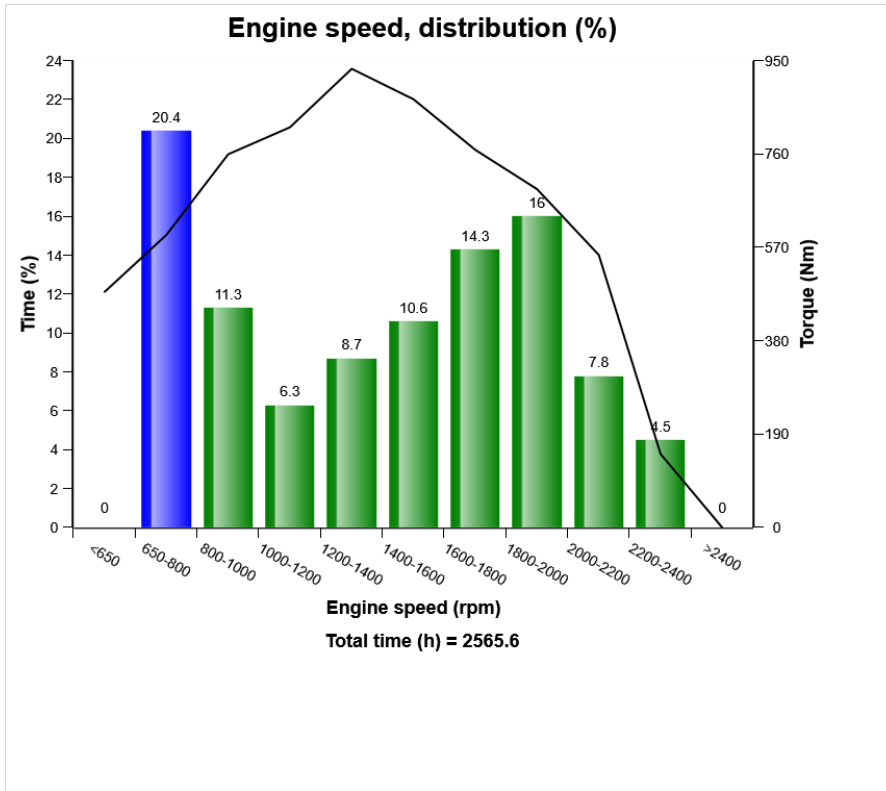
Machine model	SerialNo	Operating Hours	Reading Date
L90H	624235	2563.5	05/02/2020



Machine model	SerialNo	Operating Hours	Reading Date
L90H	624235	2563.5	05/02/2020



Machine model	SerialNo	Operating Hours	Reading Date
L90H	624235	2563.5	05/02/2020



Machine model	SerialNo	Operating Hours	Reading Date
L90H	624235	2563.5	05/02/2020

Regeneration ignored
Total number of occurrences = 13

Op hours	Year	Month	Day	Hour	Minute	Duration (min)
* 0	2000	0	0	0	0	0
* 0	2000	0	0	0	0	0
* 0	2000	0	0	0	0	0
* 0	2000	0	0	0	0	0
* 0	2000	0	0	0	0	0
* 0	2000	0	0	0	0	0
* 0	2000	0	0	0	0	0
* 0	2000	0	0	0	0	0
* 565	2018	5	1	10	2	14
* 565	2018	5	1	10	33	16
* 565	2018	5	1	10	17	4
* 1133	2018	9	25	10	37	11
* 1133	2018	9	25	10	7	2
* 1134	2018	9	25	11	16	43
* 2032	2019	7	25	13	21	1
* 2032	2019	7	25	13	53	8
* 2033	2019	7	25	14	32	3
* 2034	2019	7	26	5	23	2
* 2034	2019	7	31	14	36	4
* 2034	2019	7	31	14	51	7
* 2034	2019	7	25	15	6	7



Machine model	SerialNo	Operating Hours	Reading Date
L90H	624235	2563.5	05/02/2020

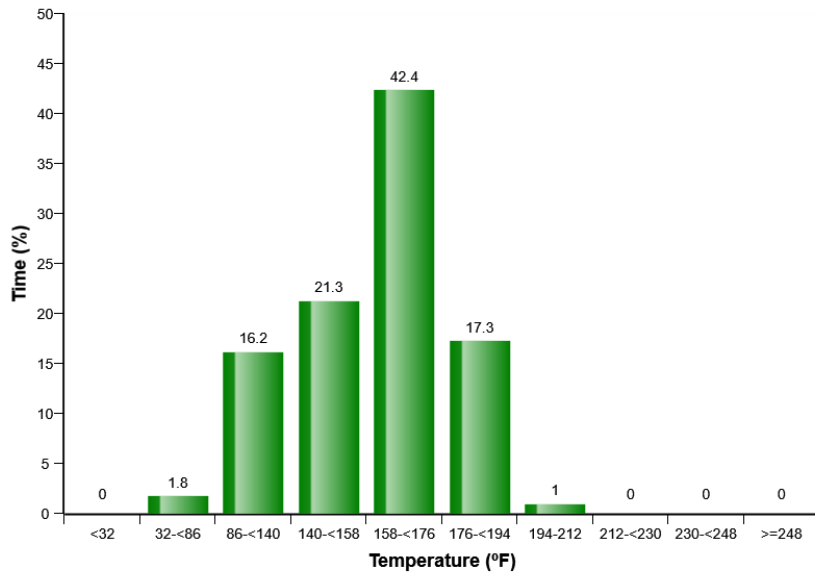
Regeneration duration
Total number of occurrences = 11

Op hours	Year	Month	Day	Hour	Minute	Duration (min)
* 0	2000	0	0	0	0	0
* 0	2000	0	0	0	0	0
* 0	2000	0	0	0	0	0
* 0	2000	0	0	0	0	0
* 0	2000	0	0	0	0	0
* 0	2000	0	0	0	0	0
* 0	2000	0	0	0	0	0
* 0	2000	0	0	0	0	0
* 0	2000	0	0	0	0	0
* 0	2000	0	0	0	0	0
* 565	2018	5	1	10	50	45
* 1133	2018	9	25	10	47	29
* 1133	2018	9	25	10	9	27
* 1135	2018	9	25	11	59	45
* 1558	2019	2	18	13	40	46
* 2032	2019	7	25	14	1	31
* 2032	2019	7	25	13	22	31
* 2033	2019	7	25	14	35	31
* 2034	2019	7	31	14	59	45
* 2099	2019	8	16	15	19	45
* 2373	2019	11	6	18	27	45

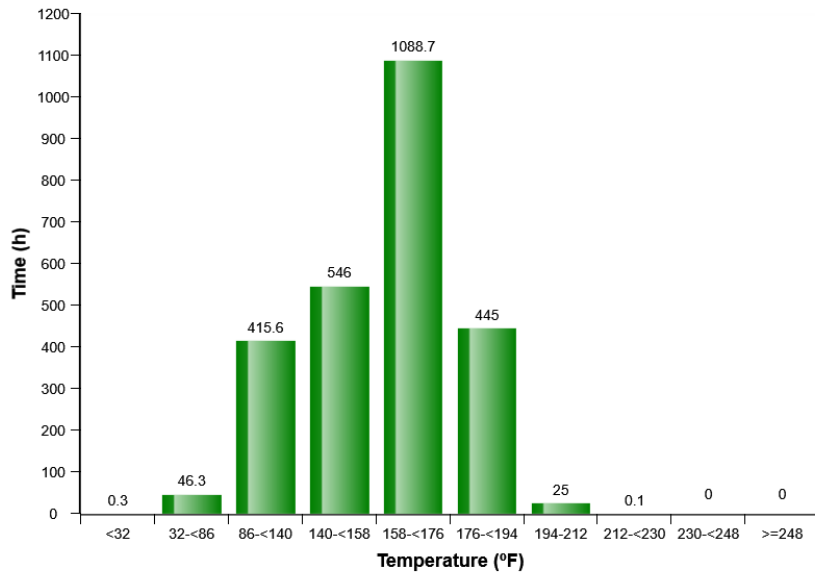


Machine model	SerialNo	Operating Hours	Reading Date
L90H	624235	2563.5	05/02/2020

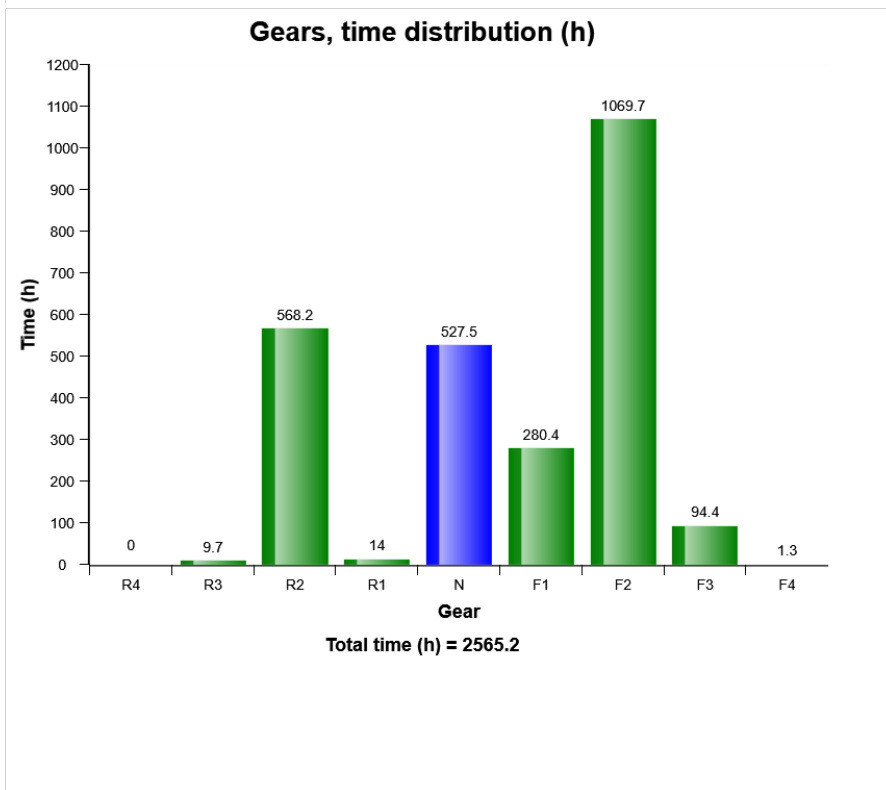
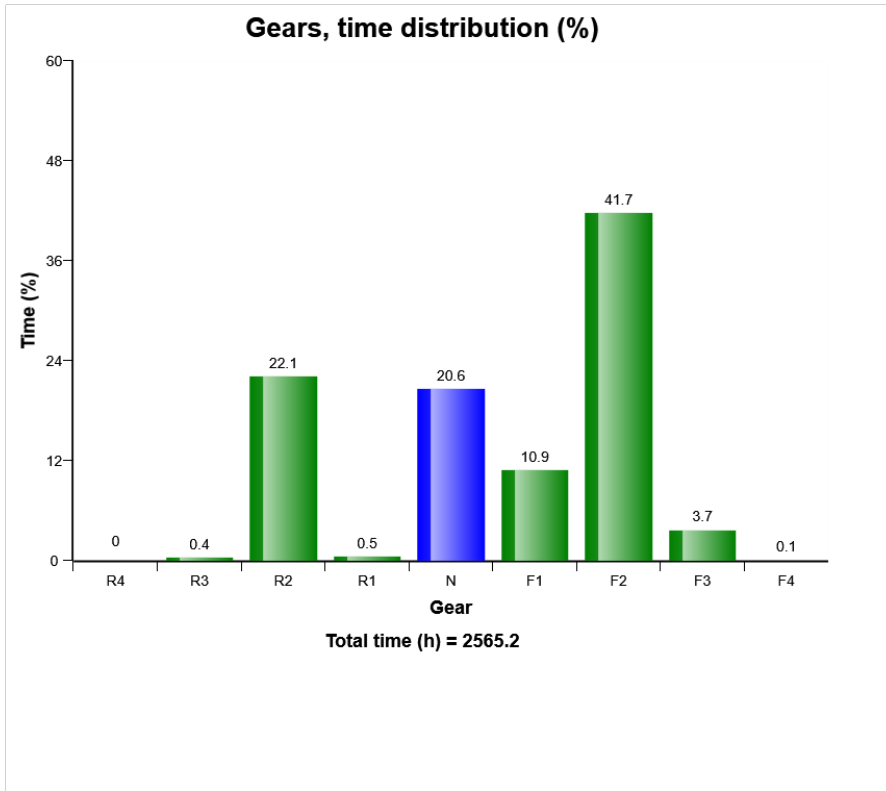
Transmission oil, temperature distribution (%)



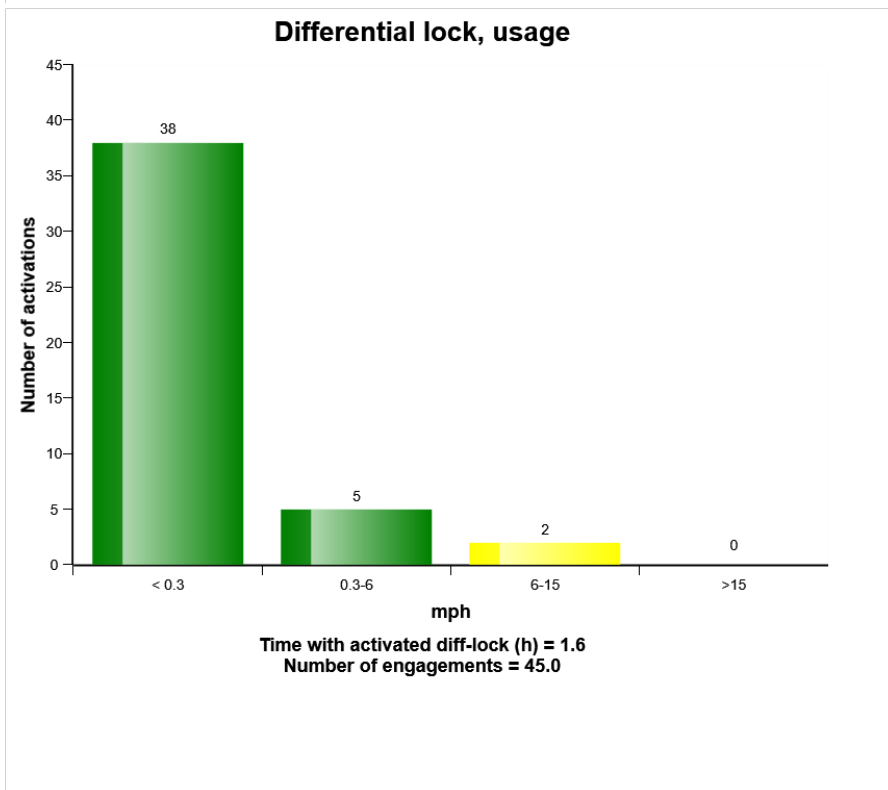
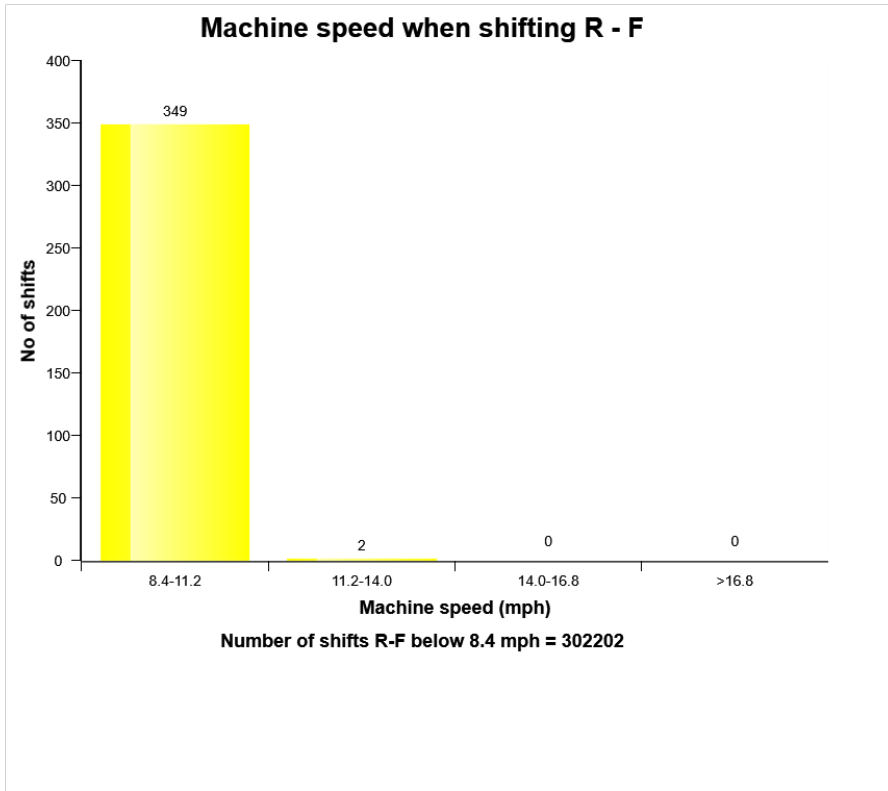
Transmission oil, temperature distribution (h)



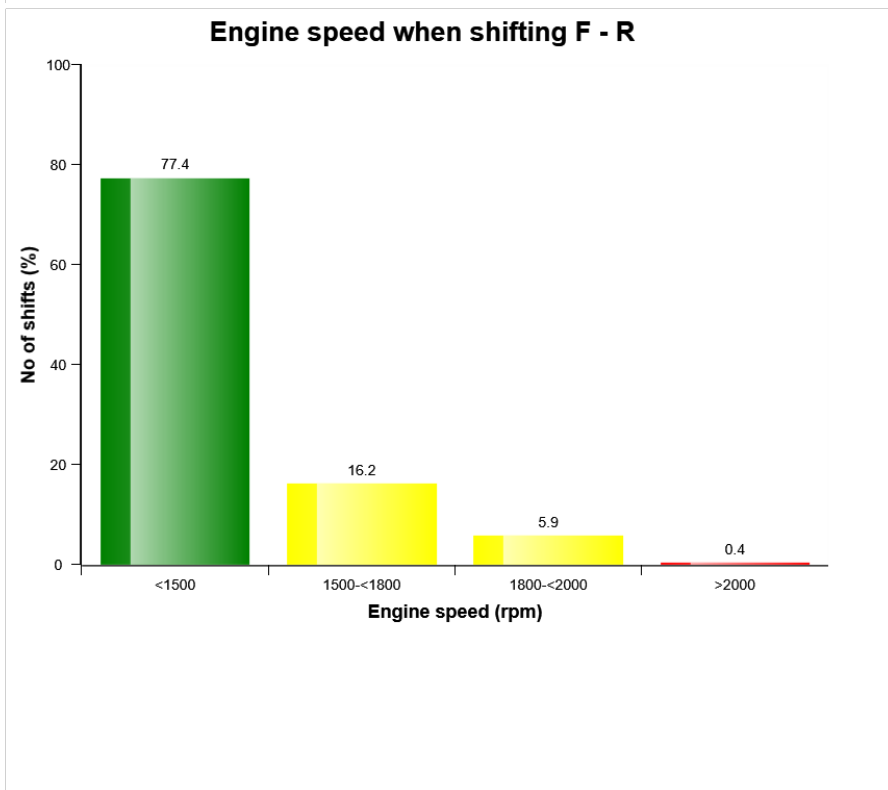
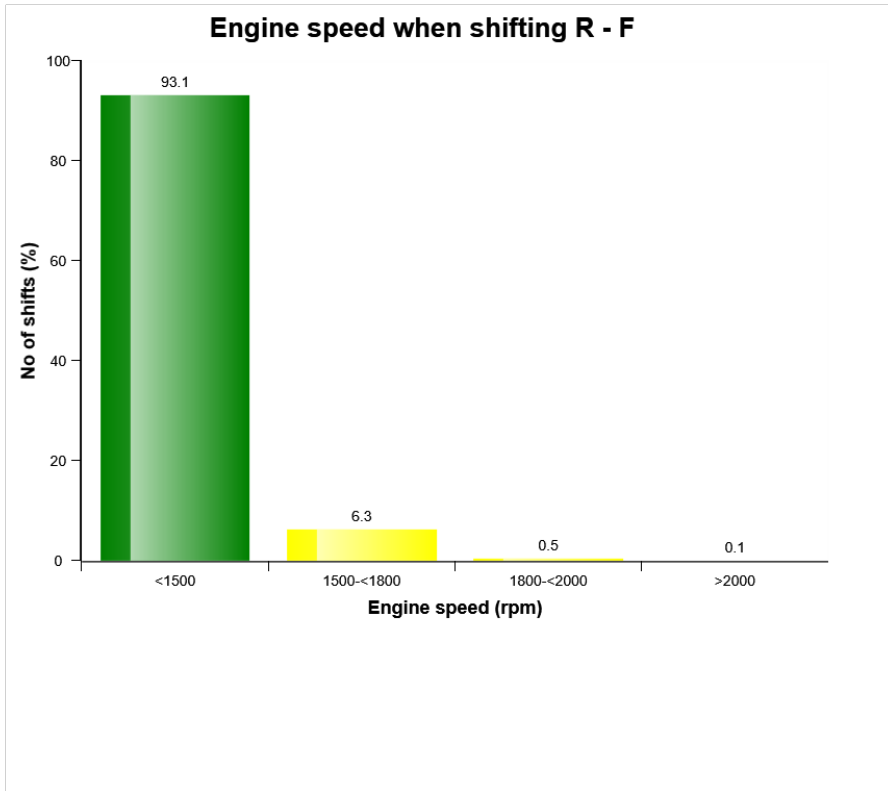
Machine model	SerialNo	Operating Hours	Reading Date
L90H	624235	2563.5	05/02/2020



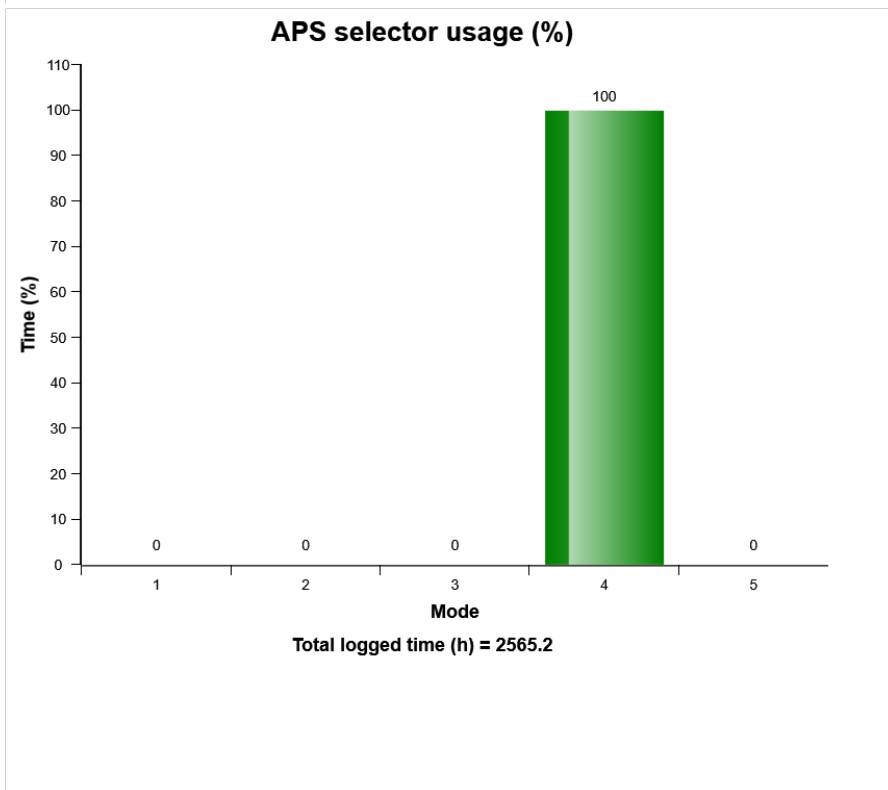
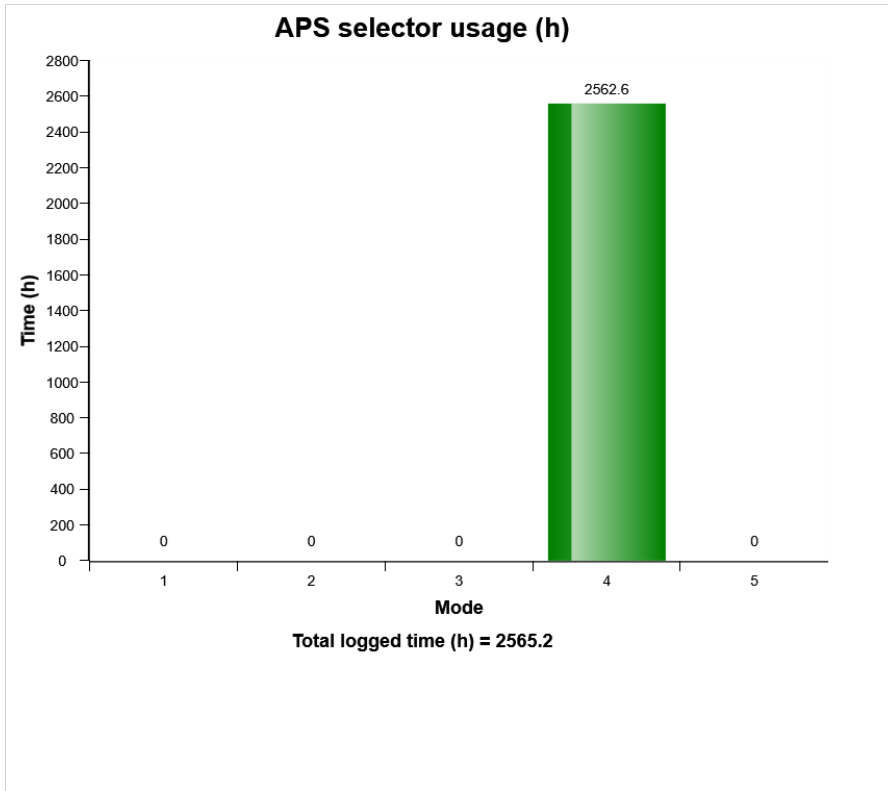
Machine model	SerialNo	Operating Hours	Reading Date
L90H	624235	2563.5	05/02/2020



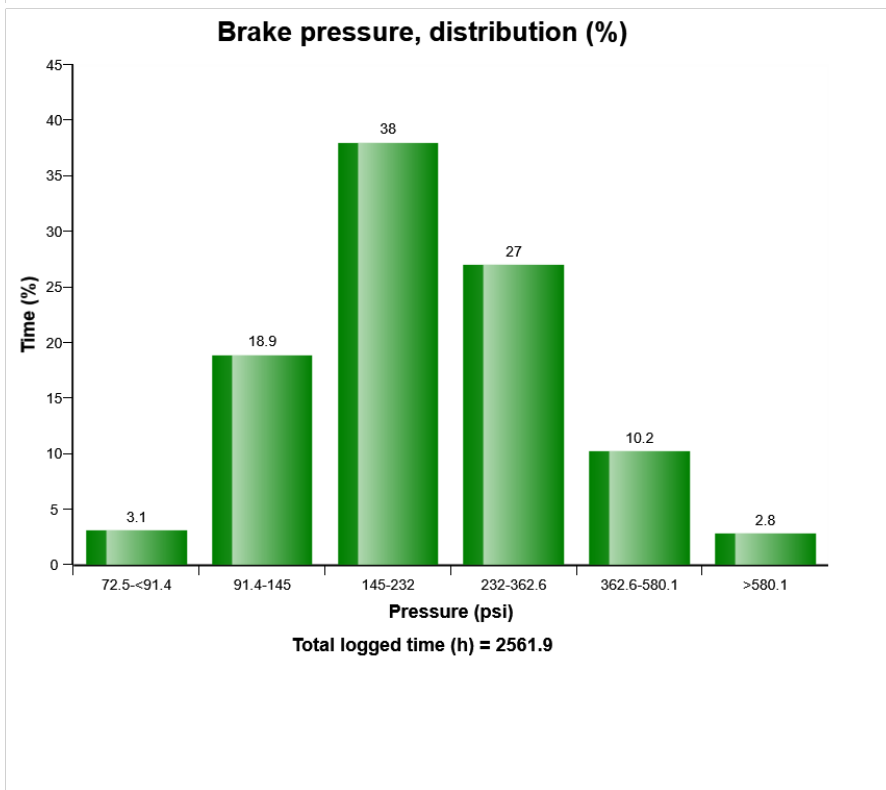
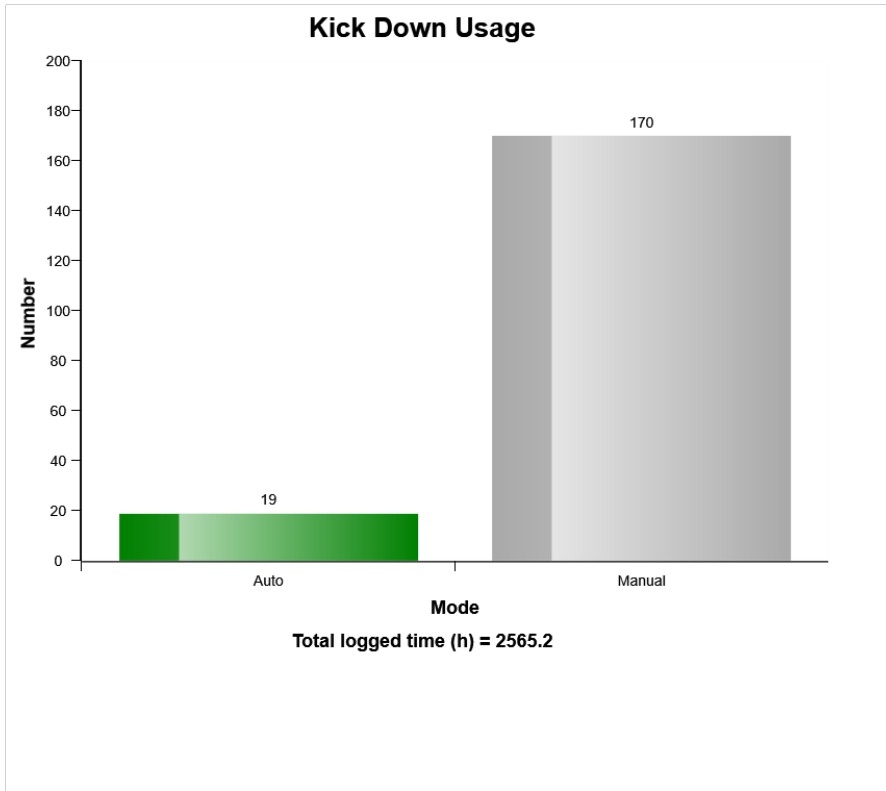
Machine model	SerialNo	Operating Hours	Reading Date
L90H	624235	2563.5	05/02/2020



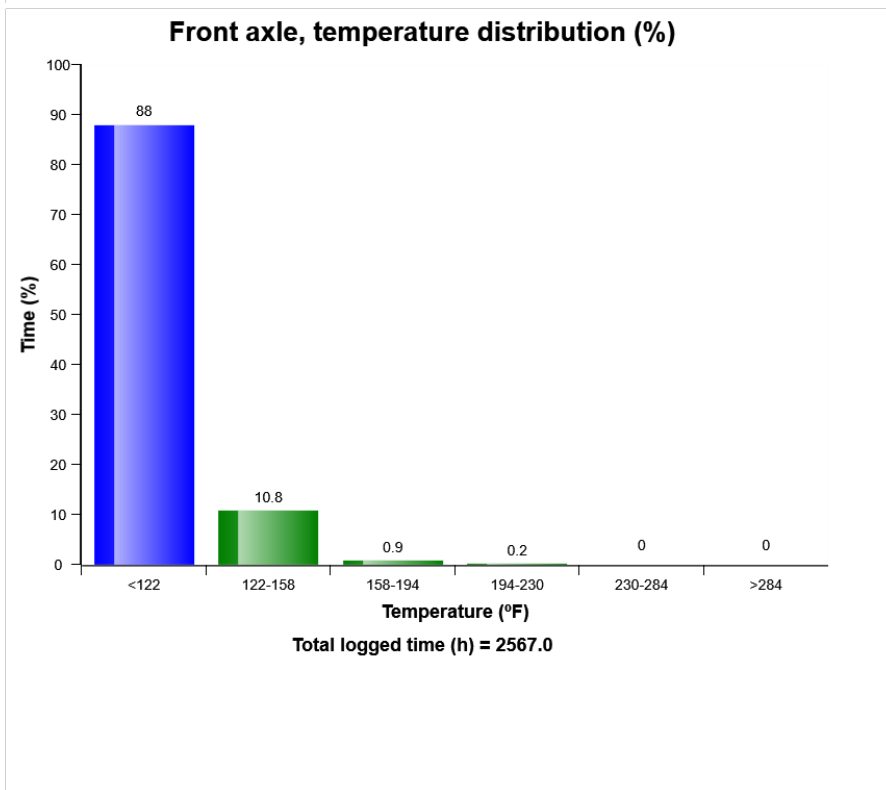
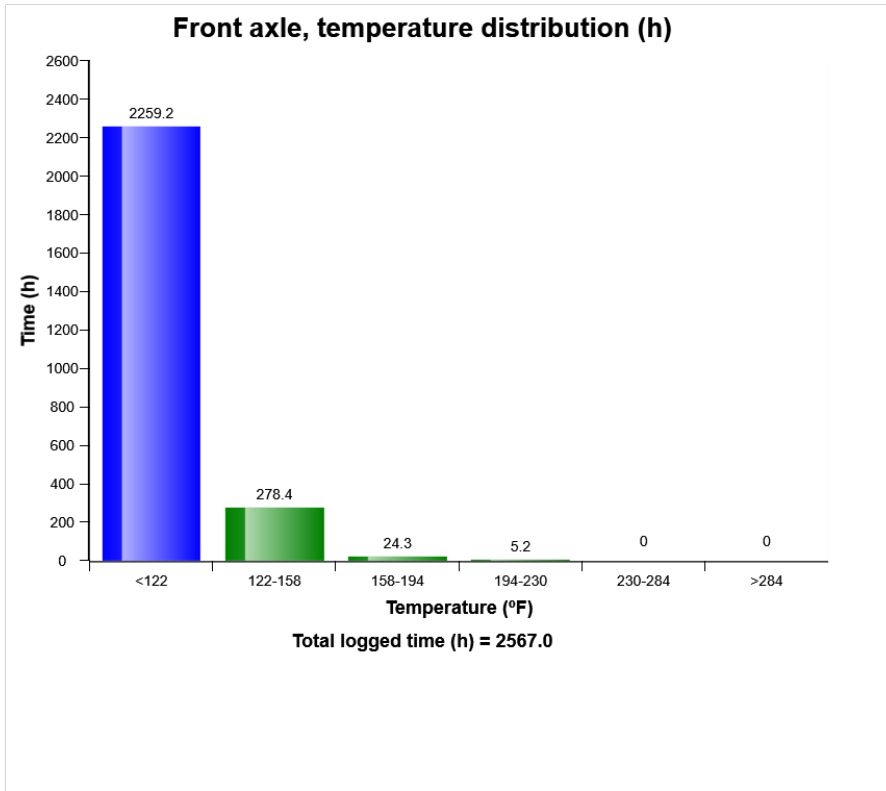
Machine model	SerialNo	Operating Hours	Reading Date
L90H	624235	2563.5	05/02/2020



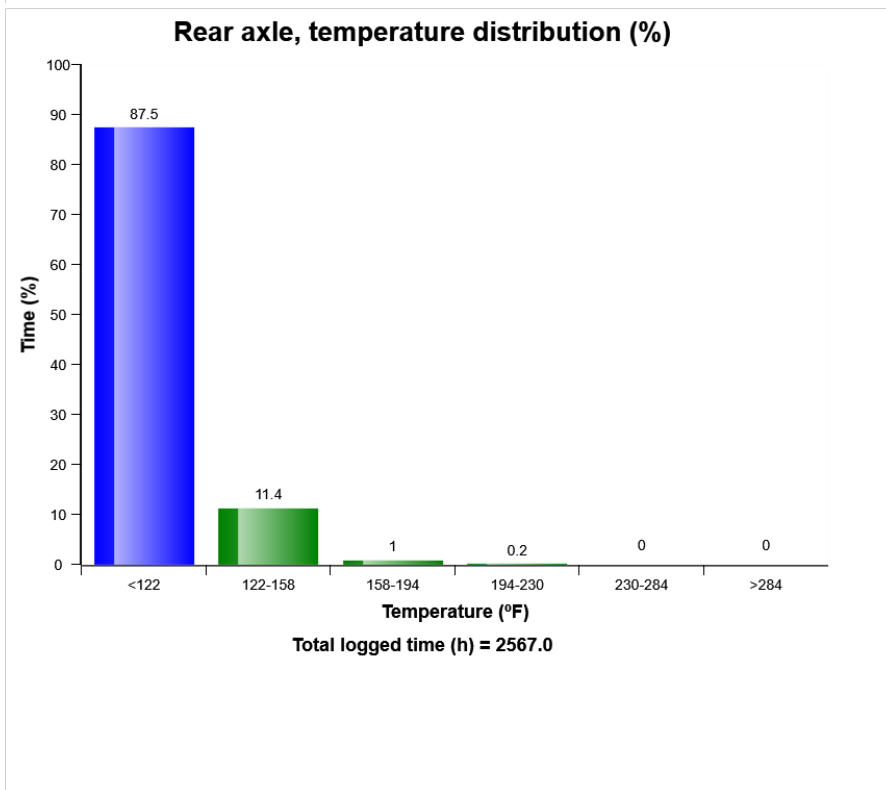
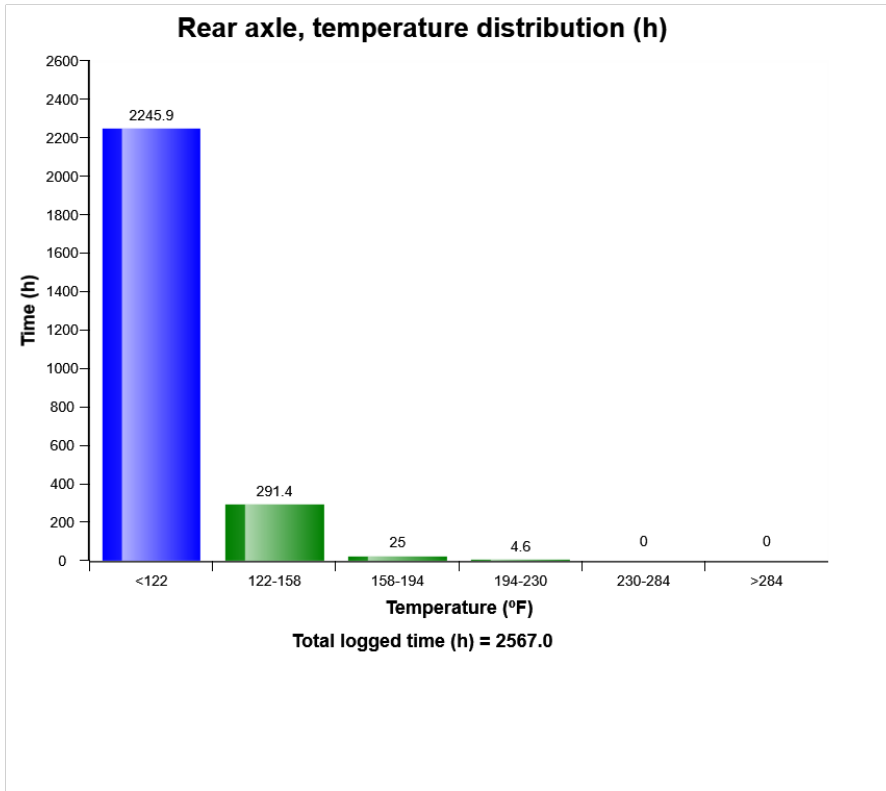
Machine model	SerialNo	Operating Hours	Reading Date
L90H	624235	2563.5	05/02/2020



Machine model	SerialNo	Operating Hours	Reading Date
L90H	624235	2563.5	05/02/2020



Machine model	SerialNo	Operating Hours	Reading Date
L90H	624235	2563.5	05/02/2020



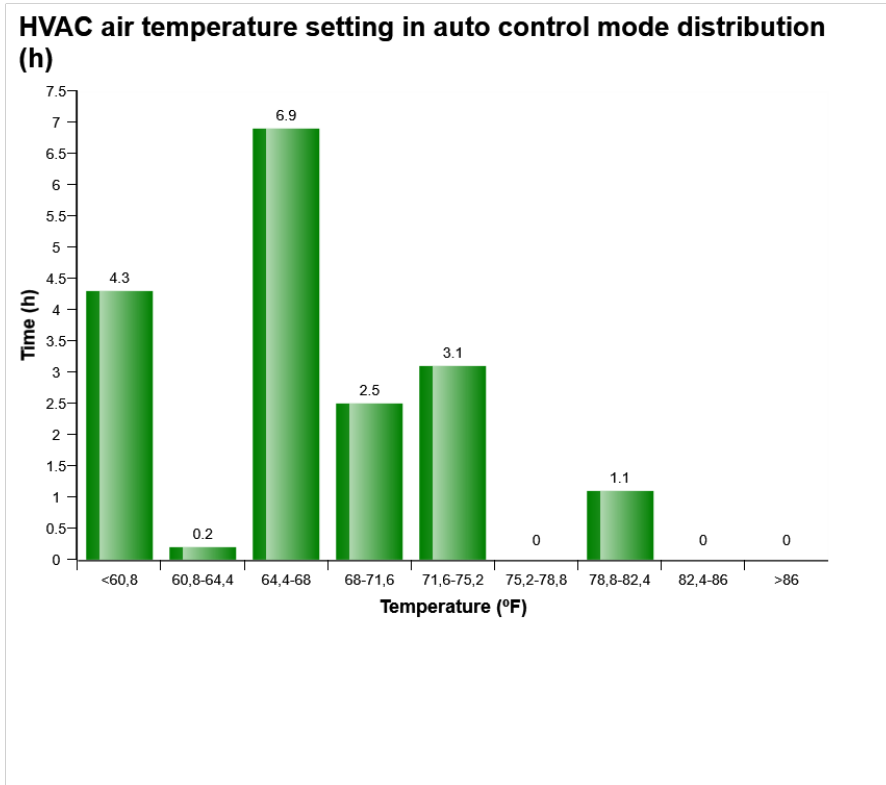
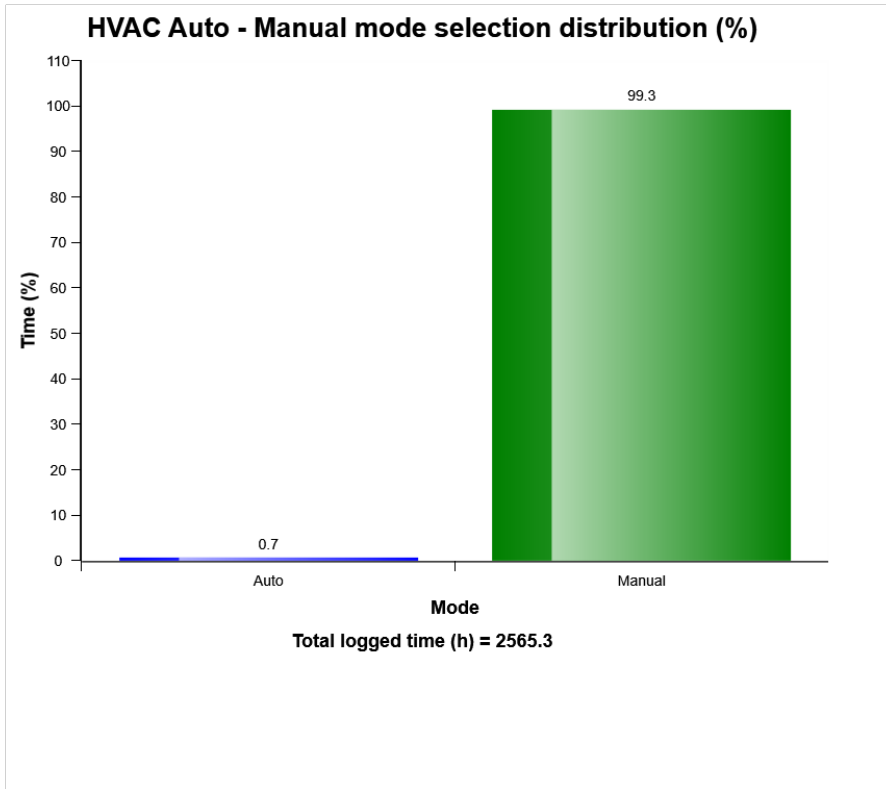
Machine model	SerialNo	Operating Hours	Reading Date
L90H	624235	2563.5	05/02/2020

Parking brake usage
Total number of occurrences = 22297

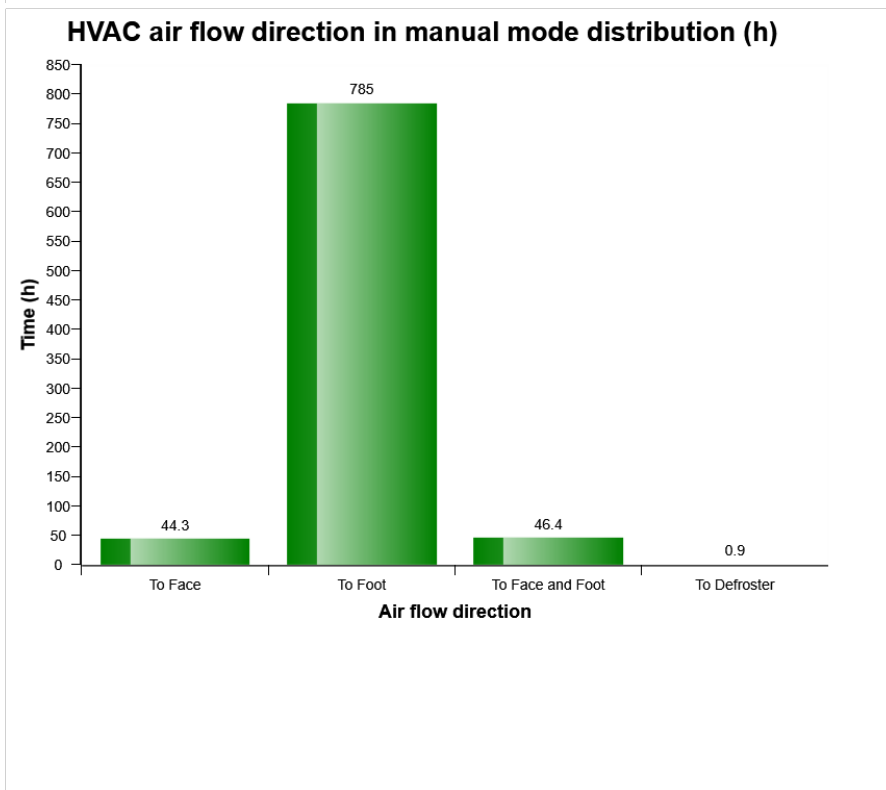
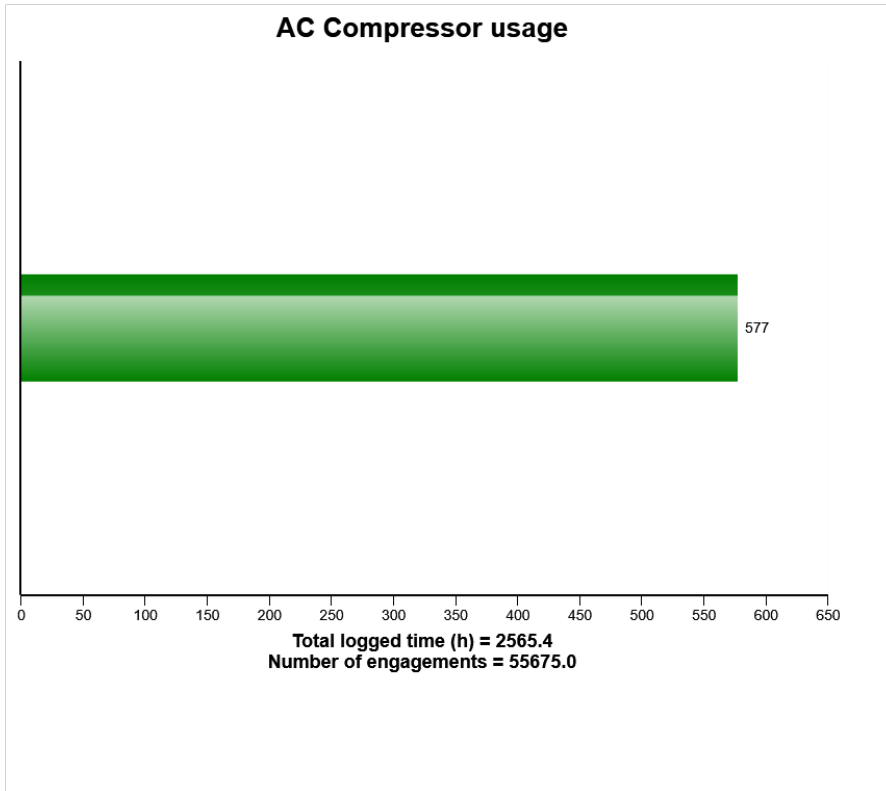
Op hours	Year	Month	Day	Hour	Minute	Duration (minutes)
2563	2020	2	4	17	8	1
2563	2020	2	4	16	53	1
2563	2020	2	4	17	1	1
2563	2020	2	4	18	13	4
2563	2020	2	4	17	4	2
2563	2020	2	4	18	2	4
2563	2020	2	4	17	10	0
2563	2020	2	4	18	11	0
2564	2020	2	4	18	19	2
2564	2020	2	4	18	25	0
2564	2020	2	4	18	27	0
2564	2020	2	4	18	29	0
2564	2020	2	4	19	23	0
2564	2020	2	4	19	33	4
2564	2020	2	4	19	39	0
2564	2020	2	4	19	41	1
2564	2020	2	4	19	49	0
2564	2020	2	5	11	20	4
2564	2020	2	5	11	28	9
2564	2020	2	4	18	30	4



Machine model	SerialNo	Operating Hours	Reading Date
L90H	624235	2563.5	05/02/2020

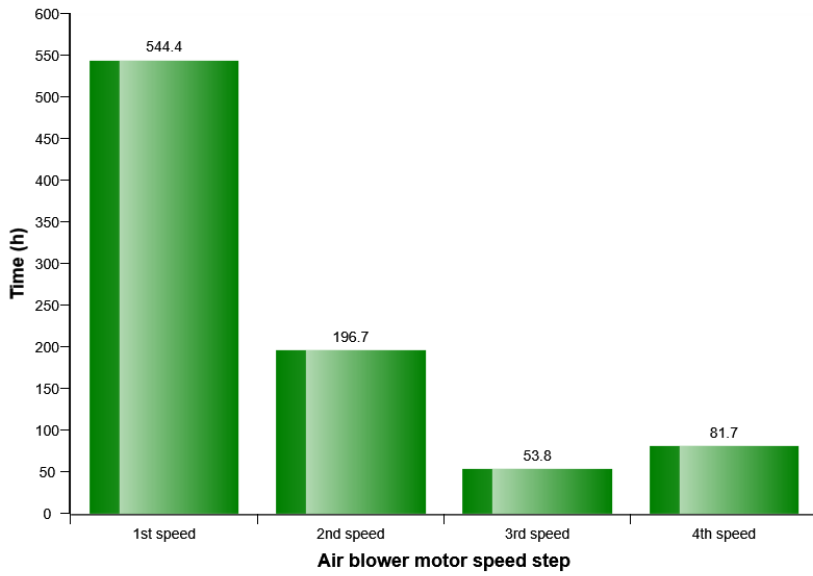


Machine model	SerialNo	Operating Hours	Reading Date
L90H	624235	2563.5	05/02/2020

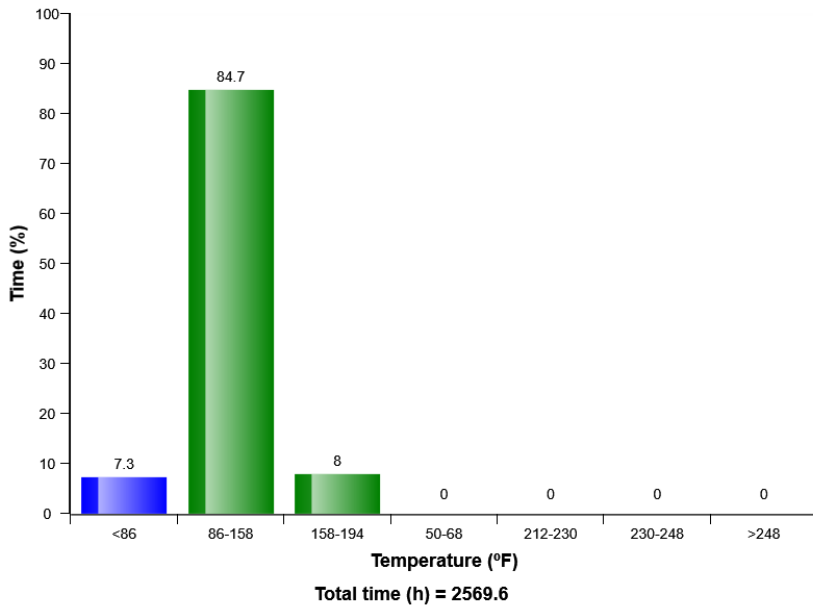


Machine model	SerialNo	Operating Hours	Reading Date
L90H	624235	2563.5	05/02/2020

HVAC air blower motor speed in manual mode distribution (h)



Hydraulic oil, temperature distribution (%)



Machine model	SerialNo	Operating Hours	Reading Date
L90H	624235	2563.5	05/02/2020

