

# VOLVO CONSTRUCTION EQUIPMENT MATRIS REPORT

Machine model L120H	SerialNo 632016	Operating Hours 3080	Reading Date 17/04/2019
Company name scott equipment baton rouge	Dealer	Report Issuer	
Contact name	Technician shawn r	Primary Application Rehandling	
Site	Workorder	Ground Condition	

MATRIS Reading, Summary / Recommendation



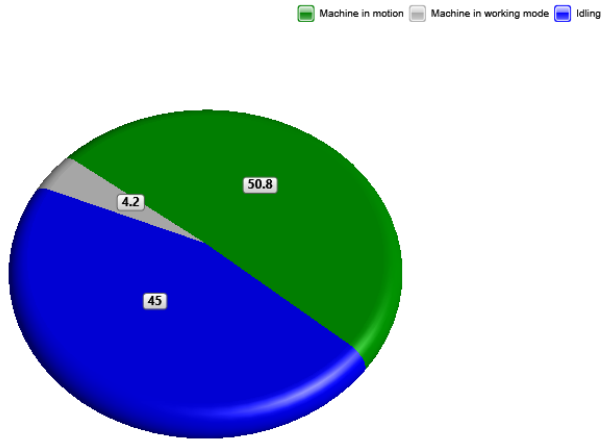
Machine model	SerialNo	Operating Hours	Reading Date
L120H	632016	3080	17/04/2019

Main equipment	Type	Equipment
	Tyre size/class	
	Main Attachment	
	Extra Counterweight	
	Ballast	
	Chains	
	Boom Suspension System	
	Attachment Interface	
	Volume m3 (yd3) / Area m2 (ft2)	
	Attachment make	



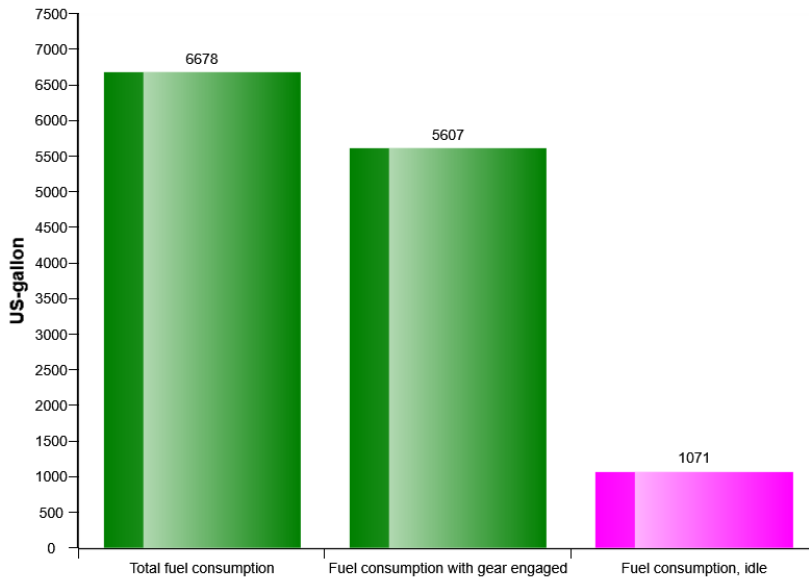
Machine model	SerialNo	Operating Hours	Reading Date
L120H	632016	3080	17/04/2019

### Machine utilization (%)



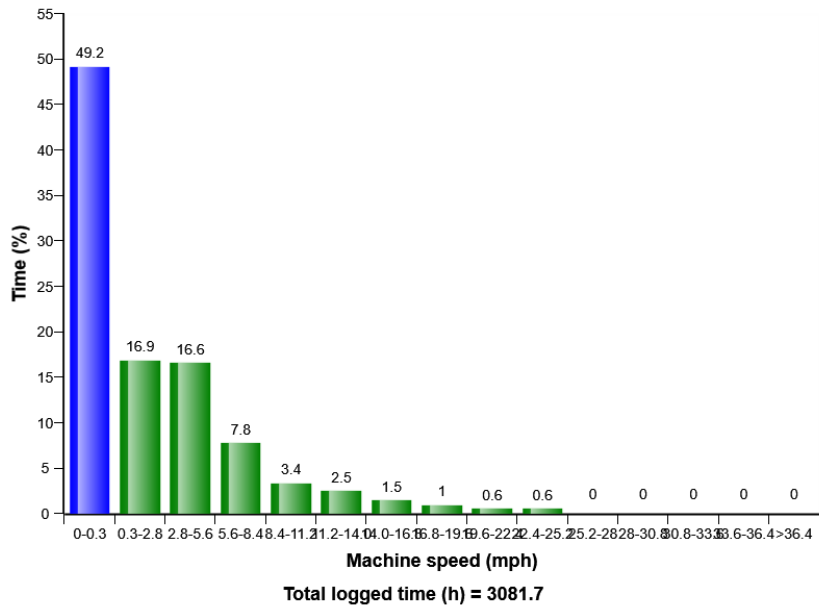
Total time (h) = 3081.7

### Fuel consumption

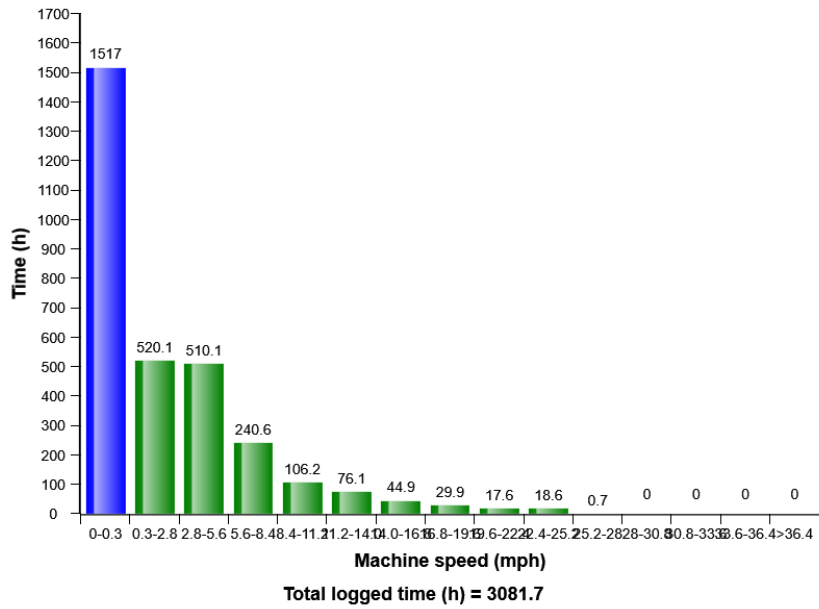


Machine model	SerialNo	Operating Hours	Reading Date
L120H	632016	3080	17/04/2019

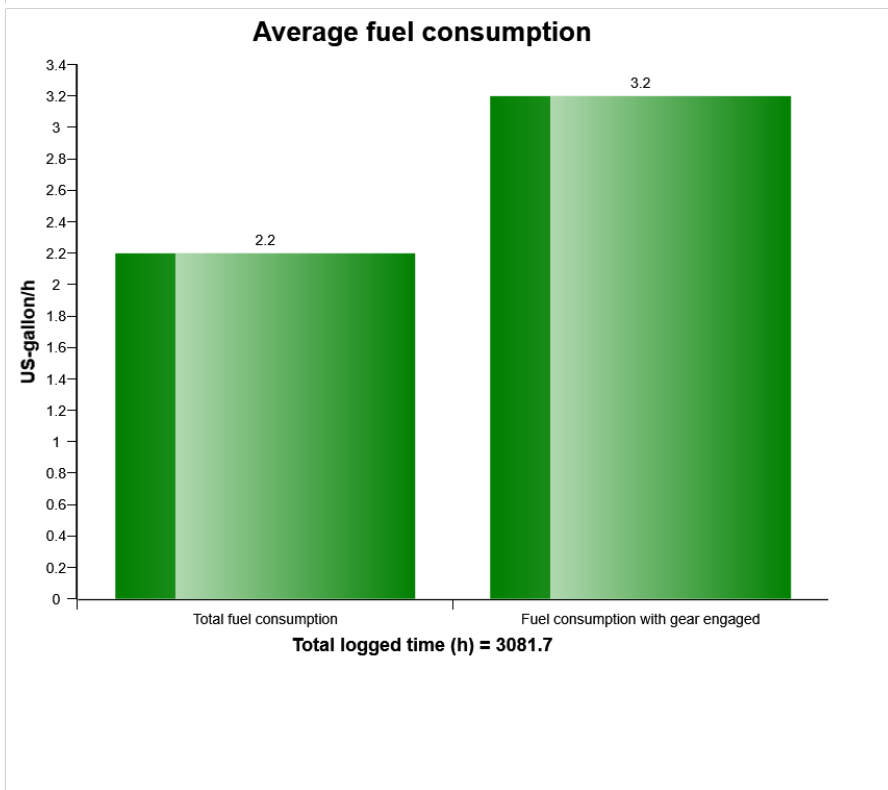
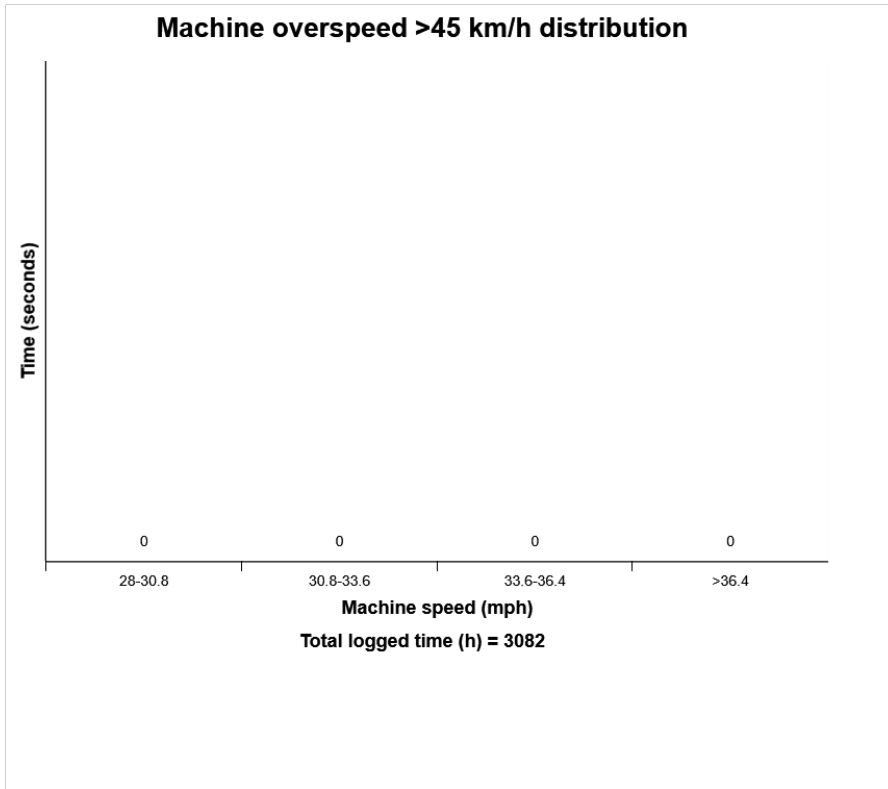
**Machine speed, distribution (%)**



**Machine speed, distribution**

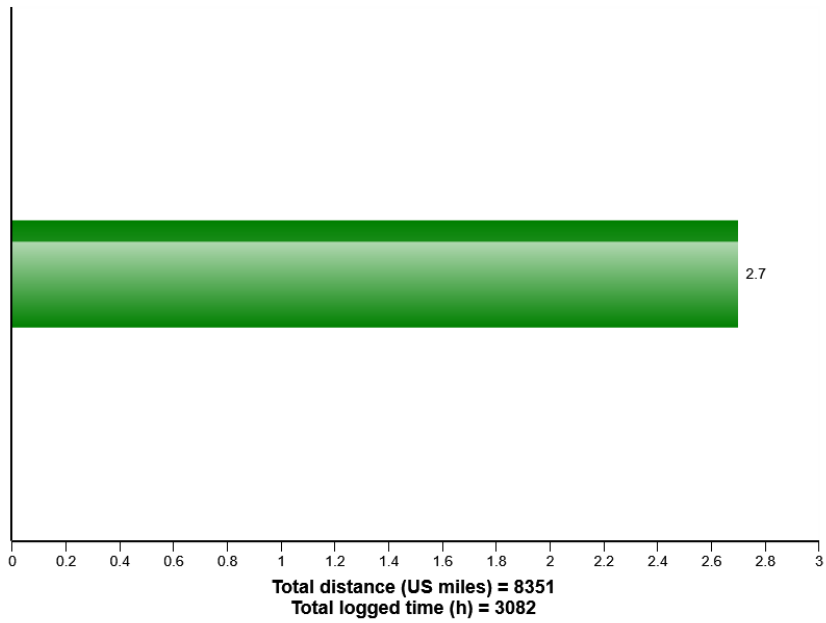


Machine model	SerialNo	Operating Hours	Reading Date
L120H	632016	3080	17/04/2019

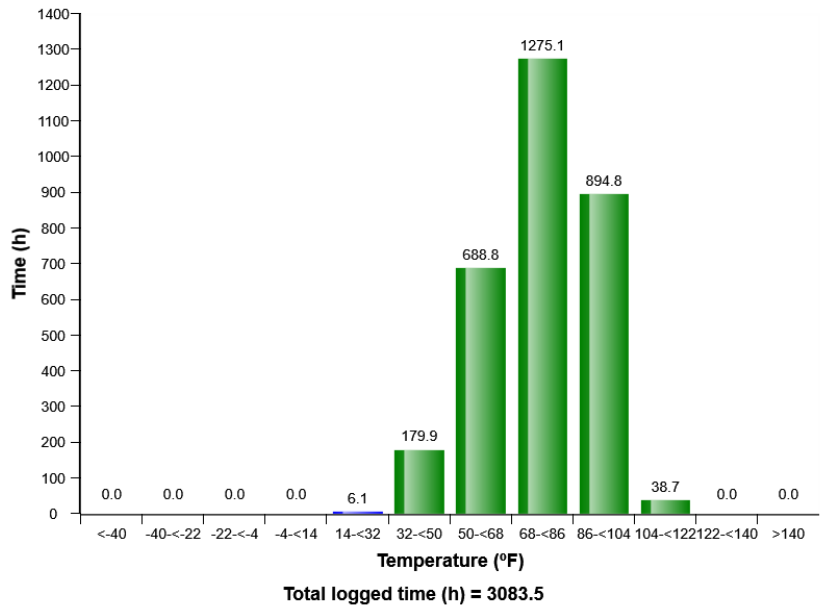


Machine model	SerialNo	Operating Hours	Reading Date
L120H	632016	3080	17/04/2019

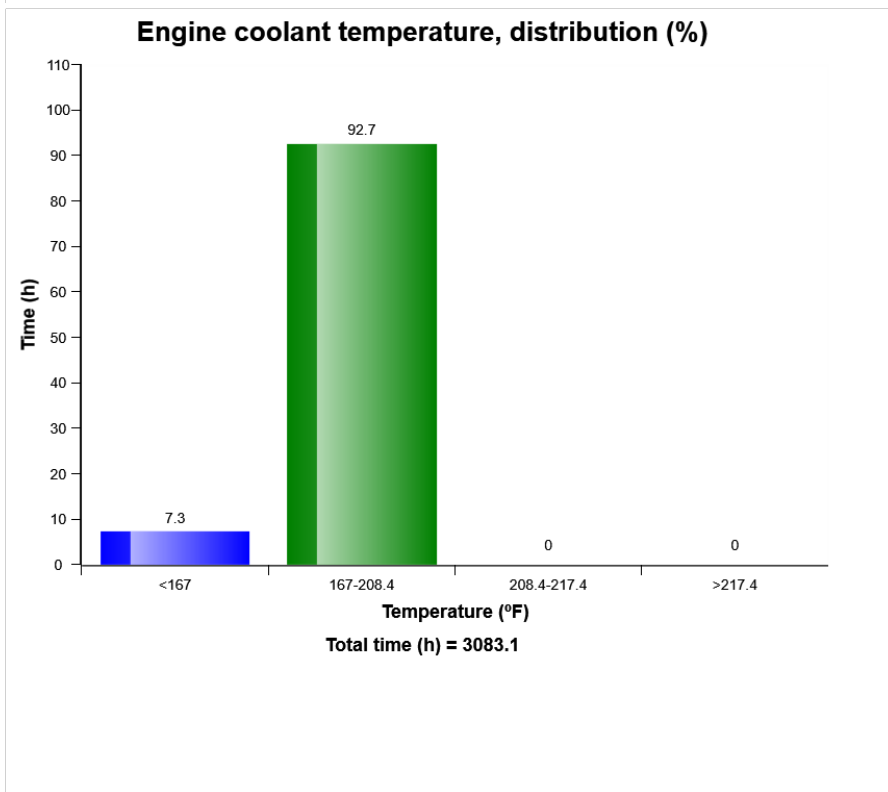
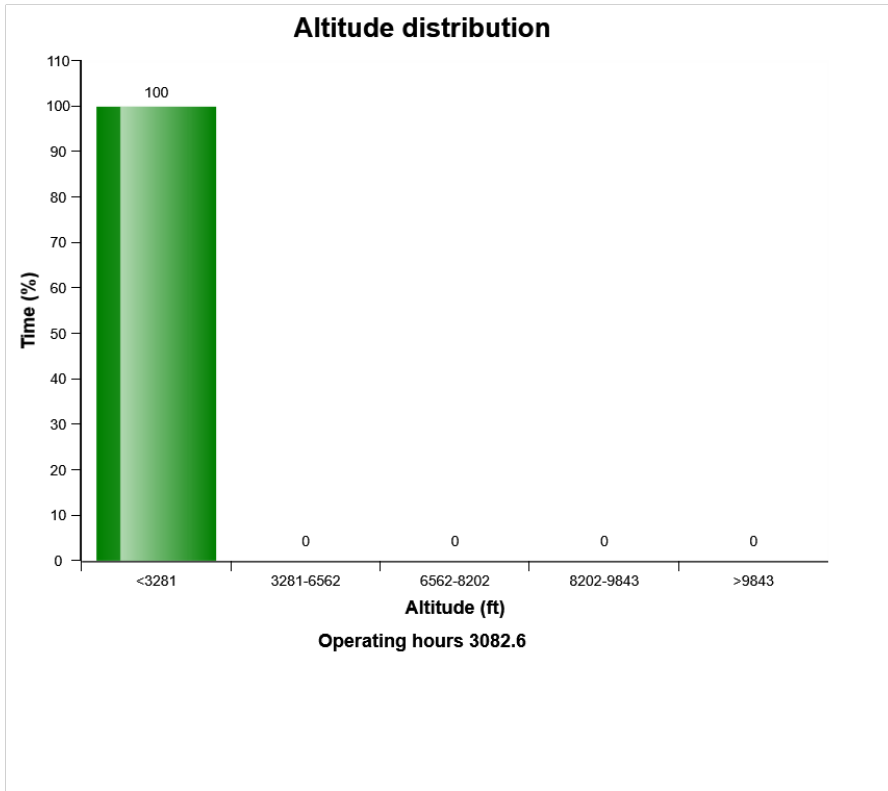
### Average speed and distance



### Machine ambient temperature distribution (h)

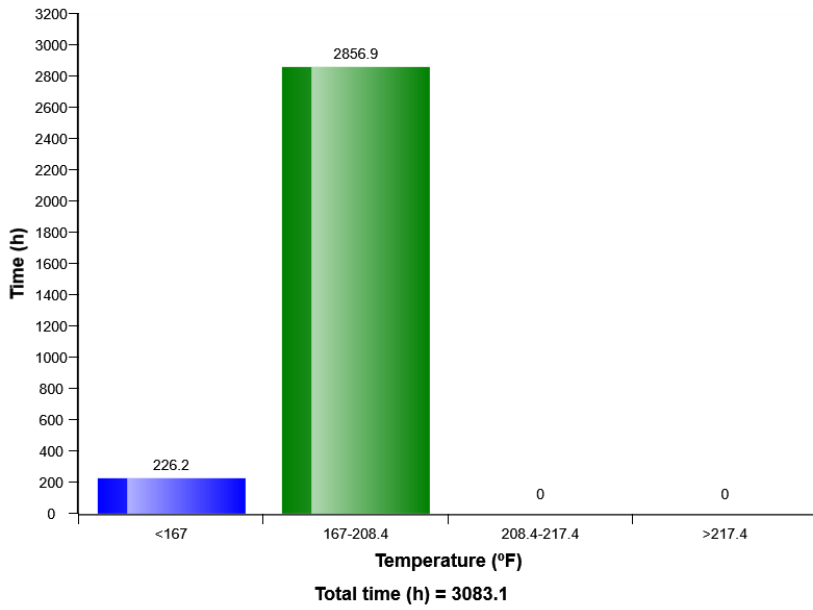


Machine model	SerialNo	Operating Hours	Reading Date
L120H	632016	3080	17/04/2019

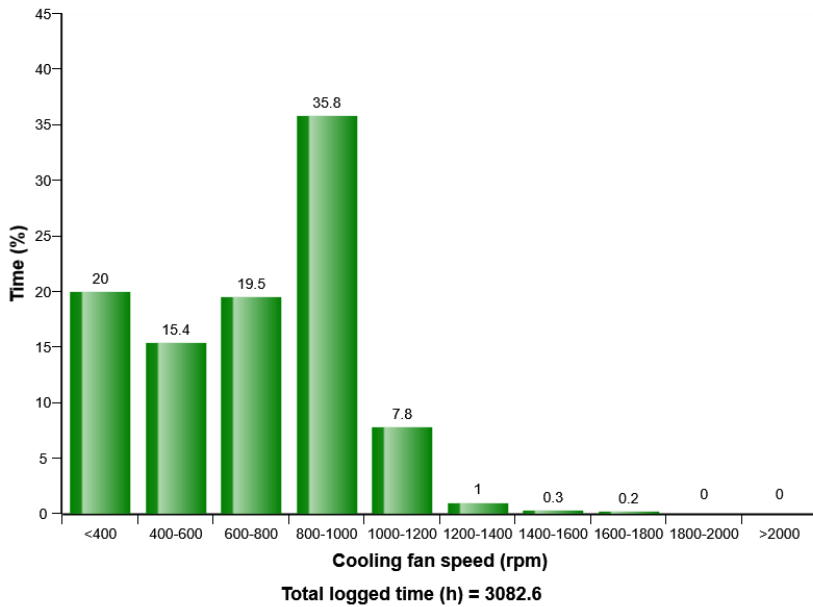


Machine model	SerialNo	Operating Hours	Reading Date
L120H	632016	3080	17/04/2019

**Engine coolant temperature, distribution (h)**

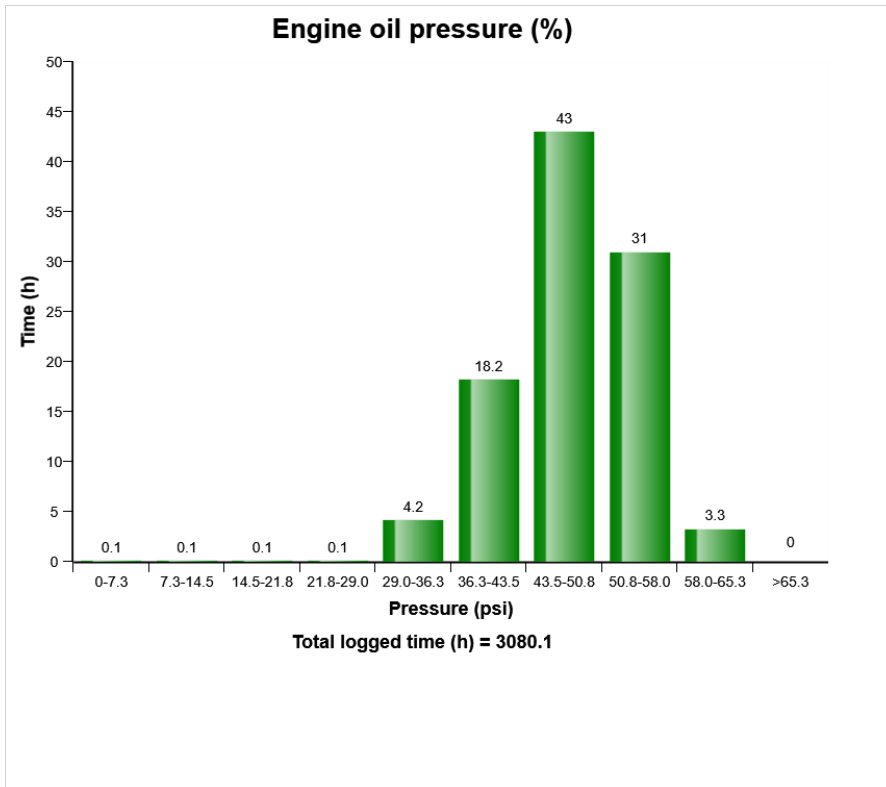
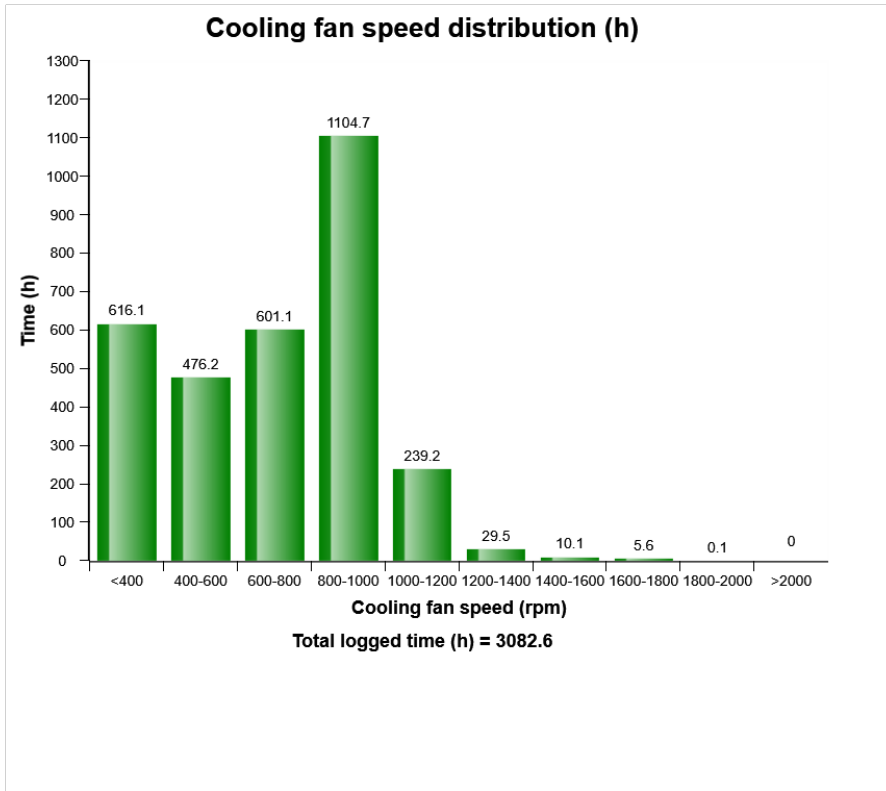


**Cooling fan speed distribution (%)**

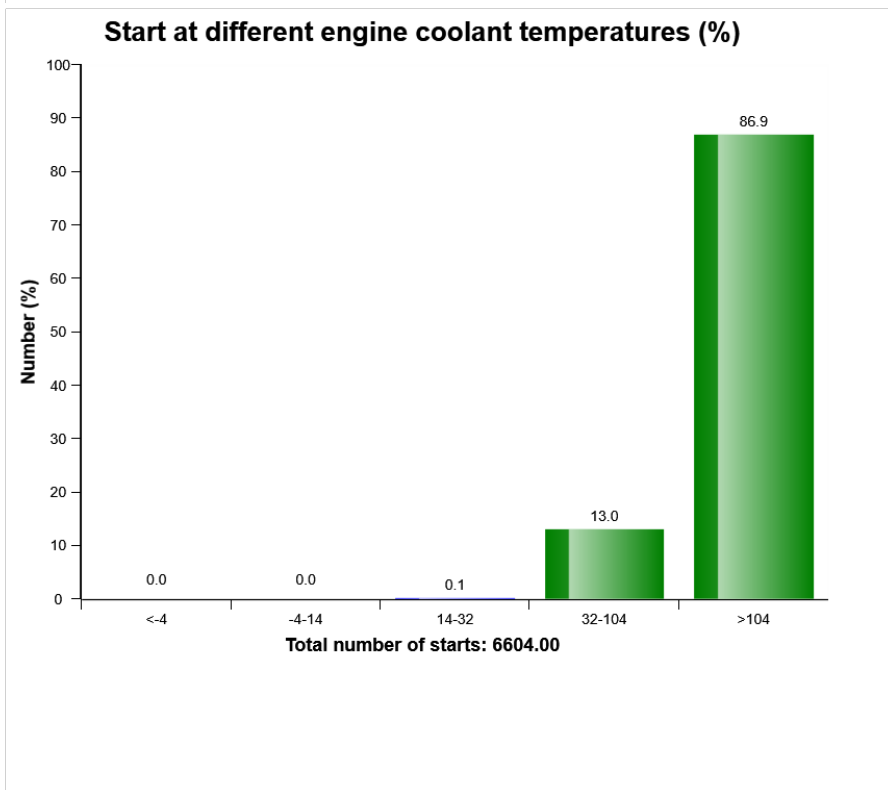
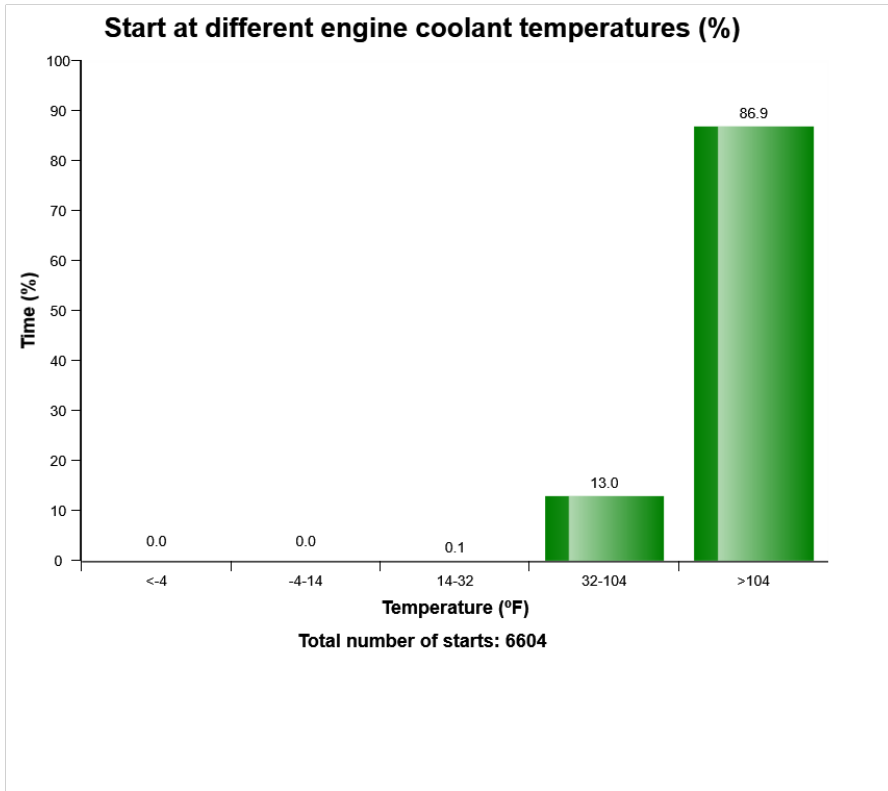




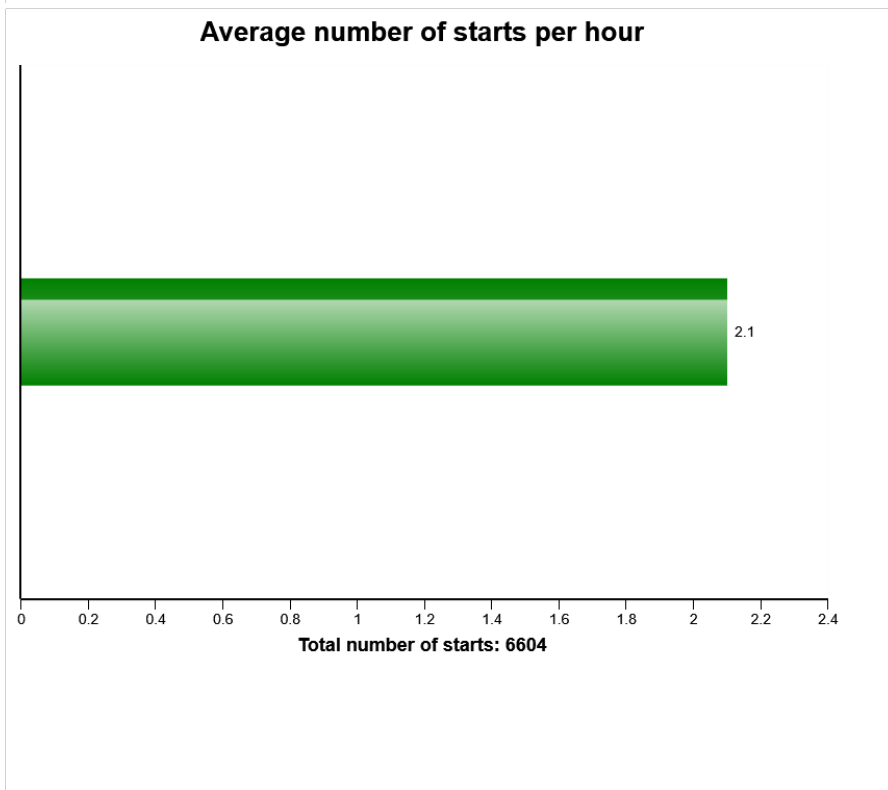
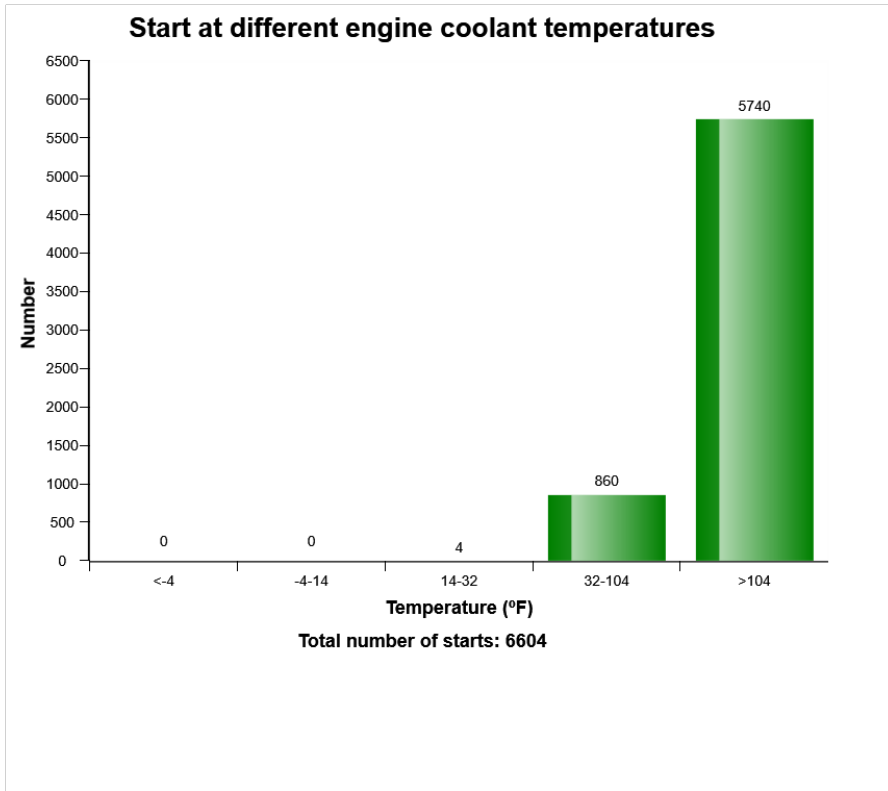
Machine model	SerialNo	Operating Hours	Reading Date
L120H	632016	3080	17/04/2019



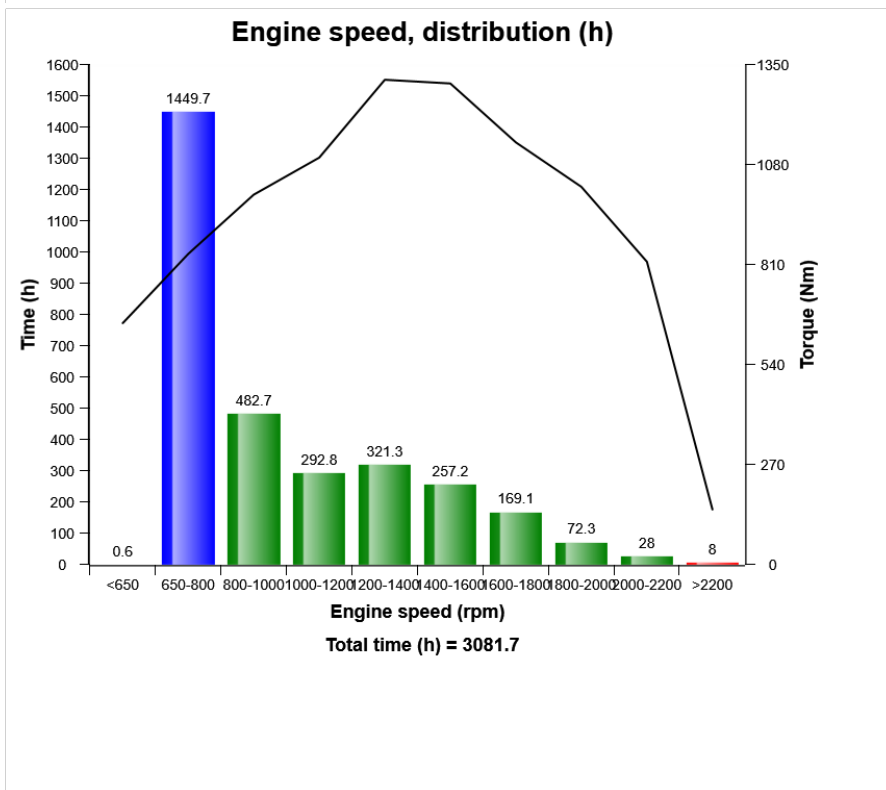
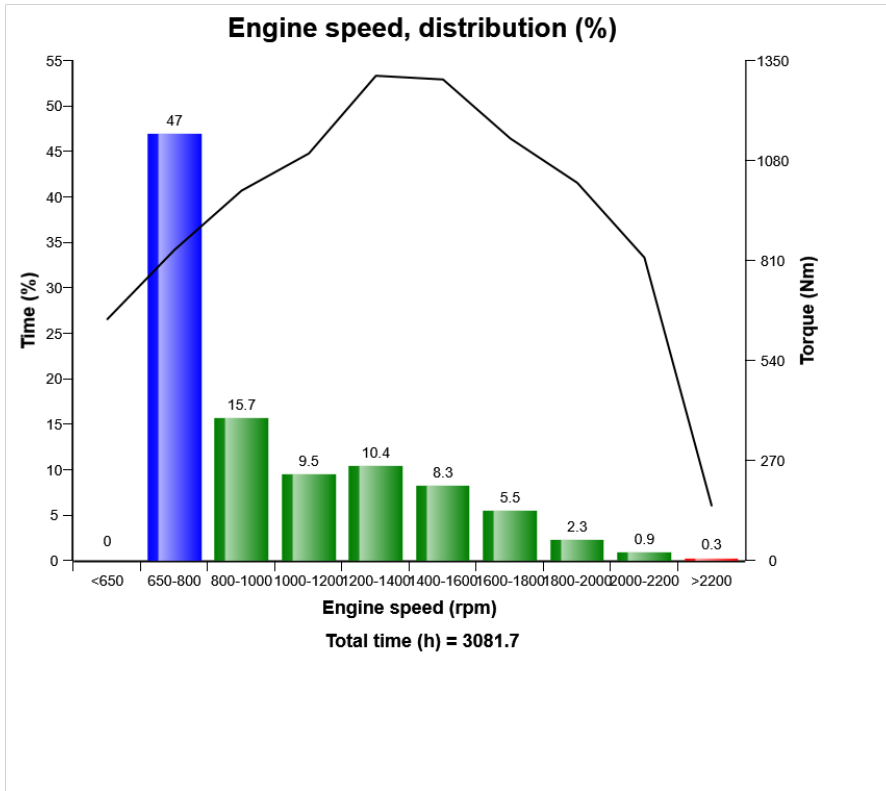
Machine model	SerialNo	Operating Hours	Reading Date
L120H	632016	3080	17/04/2019



Machine model	SerialNo	Operating Hours	Reading Date
L120H	632016	3080	17/04/2019



Machine model	SerialNo	Operating Hours	Reading Date
L120H	632016	3080	17/04/2019



Machine model	SerialNo	Operating Hours	Reading Date
L120H	632016	3080	17/04/2019

**Starter overheating**  
**Total number of occurrences = 0**

Op hours	Year	Month	Day	Hour	Minute
0	2000	0	0	0	0
0	2000	0	0	0	0
0	2000	0	0	0	0
0	2000	0	0	0	0
0	2000	0	0	0	0
0	2000	0	0	0	0
0	2000	0	0	0	0
0	2000	0	0	0	0
0	2000	0	0	0	0
0	2000	0	0	0	0
0	2000	0	0	0	0
0	2000	0	0	0	0
0	2000	0	0	0	0
0	2000	0	0	0	0
0	2000	0	0	0	0
0	2000	0	0	0	0
0	2000	0	0	0	0
0	2000	0	0	0	0
0	2000	0	0	0	0
0	2000	0	0	0	0
0	2000	0	0	0	0
0	2000	0	0	0	0
0	2000	0	0	0	0
0	2000	0	0	0	0
0	2000	0	0	0	0
0	2000	0	0	0	0
0	2000	0	0	0	0
0	2000	0	0	0	0
0	2000	0	0	0	0
0	2000	0	0	0	0
0	2000	0	0	0	0
0	2000	0	0	0	0
0	2000	0	0	0	0
0	2000	0	0	0	0
0	2000	0	0	0	0
0	2000	0	0	0	0
0	2000	0	0	0	0



Machine model	SerialNo	Operating Hours	Reading Date
L120H	632016	3080	17/04/2019

**Low engine oil level at start  
Total number of occurrences = 0**

Op hours	Year	Month	Day	Hour	Minute
* 0	2000	0	0	0	0
* 0	2000	0	0	0	0
* 0	2000	0	0	0	0
* 0	2000	0	0	0	0
* 0	2000	0	0	0	0
* 0	2000	0	0	0	0
* 0	2000	0	0	0	0
* 0	2000	0	0	0	0
* 0	2000	0	0	0	0
* 0	2000	0	0	0	0
* 0	2000	0	0	0	0
* 0	2000	0	0	0	0
* 0	2000	0	0	0	0
* 0	2000	0	0	0	0
* 0	2000	0	0	0	0
* 0	2000	0	0	0	0
* 0	2000	0	0	0	0
* 0	2000	0	0	0	0
* 0	2000	0	0	0	0
* 0	2000	0	0	0	0
* 0	2000	0	0	0	0
* 0	2000	0	0	0	0



Machine model	SerialNo	Operating Hours	Reading Date
L120H	632016	3080	17/04/2019

**Low Engine Oil Pressure**  
**Total number of occurrences = 0**

	Op hours	Year	Month	Day	Hour	Minute	Duration (seconds)	Extreme (psi)
*	0	2000	0	0	0	0	0	0
*	0	2000	0	0	0	0	0	0
*	0	2000	0	0	0	0	0	0
*	0	2000	0	0	0	0	0	0
*	0	2000	0	0	0	0	0	0
*	0	2000	0	0	0	0	0	0
*	0	2000	0	0	0	0	0	0
*	0	2000	0	0	0	0	0	0
*	0	2000	0	0	0	0	0	0
*	0	2000	0	0	0	0	0	0
*	0	2000	0	0	0	0	0	0
*	0	2000	0	0	0	0	0	0
*	0	2000	0	0	0	0	0	0
*	0	2000	0	0	0	0	0	0
*	0	2000	0	0	0	0	0	0
*	0	2000	0	0	0	0	0	0
*	0	2000	0	0	0	0	0	0
*	0	2000	0	0	0	0	0	0
*	0	2000	0	0	0	0	0	0
*	0	2000	0	0	0	0	0	0
*	0	2000	0	0	0	0	0	0
*	0	2000	0	0	0	0	0	0
*	0	2000	0	0	0	0	0	0
*	0	2000	0	0	0	0	0	0



Machine model	SerialNo	Operating Hours	Reading Date
L120H	632016	3080	17/04/2019

**Low Air filter pressure  
Total number of occurrences = 0**

Op hours	Year	Month	Day	Hour	Minute	Duration (seconds)
0	2000	0	0	0	0	0
0	2000	0	0	0	0	0
0	2000	0	0	0	0	0
0	2000	0	0	0	0	0
0	2000	0	0	0	0	0
0	2000	0	0	0	0	0
0	2000	0	0	0	0	0
0	2000	0	0	0	0	0
0	2000	0	0	0	0	0
0	2000	0	0	0	0	0
0	2000	0	0	0	0	0
0	2000	0	0	0	0	0
0	2000	0	0	0	0	0
0	2000	0	0	0	0	0
0	2000	0	0	0	0	0
0	2000	0	0	0	0	0
0	2000	0	0	0	0	0
0	2000	0	0	0	0	0
0	2000	0	0	0	0	0
0	2000	0	0	0	0	0
0	2000	0	0	0	0	0
0	2000	0	0	0	0	0
0	2000	0	0	0	0	0
0	2000	0	0	0	0	0





Machine model	SerialNo	Operating Hours	Reading Date
L120H	632016	3080	17/04/2019

**Engine overspeed, duration**  
**Total number of occurrences = 0**

Op hours	Year	Month	Day	Hour	Minute	Duration (seconds)	Extreme value
0	2000	0	0	0	0	0	0
0	2000	0	0	0	0	0	0
0	2000	0	0	0	0	0	0
0	2000	0	0	0	0	0	0
0	2000	0	0	0	0	0	0
0	2000	0	0	0	0	0	0
0	2000	0	0	0	0	0	0
0	2000	0	0	0	0	0	0
0	2000	0	0	0	0	0	0
0	2000	0	0	0	0	0	0
0	2000	0	0	0	0	0	0
0	2000	0	0	0	0	0	0
0	2000	0	0	0	0	0	0
0	2000	0	0	0	0	0	0
0	2000	0	0	0	0	0	0
0	2000	0	0	0	0	0	0
0	2000	0	0	0	0	0	0
0	2000	0	0	0	0	0	0
0	2000	0	0	0	0	0	0
0	2000	0	0	0	0	0	0
0	2000	0	0	0	0	0	0
0	2000	0	0	0	0	0	0
0	2000	0	0	0	0	0	0



Machine model	SerialNo	Operating Hours	Reading Date
L120H	632016	3080	17/04/2019

**Regeneration aborted**  
**Total number of occurrences = 9877**

Op hours	Year	Month	Day	Hour	Minute	Reason
* 535	2017	3	24	2	8	0
* 535	2017	3	24	2	8	0
* 535	2017	3	24	2	9	0
* 535	2017	3	24	2	9	0
* 535	2017	3	24	2	9	0
* 535	2017	3	24	2	9	0
* 535	2017	3	24	2	9	0
* 535	2017	3	24	2	9	0
* 535	2017	3	24	2	8	0
* 535	2017	3	24	2	9	0
* 535	2017	3	24	2	8	0
* 535	2017	3	24	2	8	0
* 535	2017	3	24	2	8	0
* 535	2017	3	24	2	8	0
* 535	2017	3	24	2	8	0
* 535	2017	3	24	2	8	0
* 535	2017	3	24	2	8	0
* 535	2017	3	24	2	8	0
* 535	2017	3	24	2	9	0
* 535	2017	3	24	2	8	0
* 997	2017	9	6	15	27	2
* 1971	2018	6	8	12	50	2



Machine model	SerialNo	Operating Hours	Reading Date
L120H	632016	3080	17/04/2019

**Regeneration ignored**  
**Total number of occurrences = 21**

Op hours	Year	Month	Day	Hour	Minute	Duration (min)
* 469	2016	10	21	20	53	47
* 488	2016	11	17	23	37	39
* 489	2016	11	29	5	9	6
* 489	2016	11	29	20	9	3
* 489	2016	11	29	23	10	74
* 533	2017	3	23	20	9	50
* 534	2017	3	24	1	25	43
* 534	2017	3	23	23	0	6
* 534	2017	3	23	22	58	1
* 993	2017	9	6	12	1	11
* 993	2017	9	6	12	19	205
* 997	2017	9	7	5	59	172
* 1000	2017	9	7	9	8	55
* 1463	2018	2	19	8	8	45
* 1969	2018	6	8	10	25	43
* 1971	2018	6	8	12	50	44
* 1984	2018	6	12	14	40	44
* 2545	2018	11	1	14	37	44
* 2654	2018	11	29	9	20	45
* 2925	2019	2	4	12	23	44



Machine model	SerialNo	Operating Hours	Reading Date
L120H	632016	3080	17/04/2019

**Regeneration duration**  
**Total number of occurrences = 18**

Op hours	Year	Month	Day	Hour	Minute	Duration (min)
* 0	2000	0	0	0	0	0
* 0	2000	0	0	0	0	0
* 470	2016	10	21	21	0	40
* 488	2016	11	17	23	37	39
* 489	2016	11	29	5	10	0
* 489	2016	11	29	23	45	39
* 489	2016	11	29	5	9	0
* 533	2017	3	23	20	9	6
* 534	2017	3	24	1	29	40
* 993	2017	9	6	12	20	18
* 996	2017	9	6	15	2	24
* 997	2017	9	7	6	23	27
* 1000	2017	9	7	9	20	43
* 1463	2018	2	19	8	8	44
* 1969	2018	6	8	10	25	43
* 1971	2018	6	8	12	50	44
* 1984	2018	6	12	14	40	44
* 2545	2018	11	1	14	37	44
* 2654	2018	11	29	9	20	45
* 2925	2019	2	4	12	23	44



Machine model	SerialNo	Operating Hours	Reading Date
L120H	632016	3080	17/04/2019

**High engine coolant temperature**  
**Total number of occurrences = 0**

<b>Op hours</b>	<b>Year</b>	<b>Month</b>	<b>Day</b>	<b>Hour</b>	<b>Minute</b>	<b>Duration (seconds)</b>	<b>Extreme (° F)</b>
0	2000	0	0	0	0	0	32
0	2000	0	0	0	0	0	32
0	2000	0	0	0	0	0	32
0	2000	0	0	0	0	0	32
0	2000	0	0	0	0	0	32
0	2000	0	0	0	0	0	32
0	2000	0	0	0	0	0	32
0	2000	0	0	0	0	0	32
0	2000	0	0	0	0	0	32
0	2000	0	0	0	0	0	32
0	2000	0	0	0	0	0	32
0	2000	0	0	0	0	0	32
0	2000	0	0	0	0	0	32
0	2000	0	0	0	0	0	32
0	2000	0	0	0	0	0	32
0	2000	0	0	0	0	0	32
0	2000	0	0	0	0	0	32
0	2000	0	0	0	0	0	32
0	2000	0	0	0	0	0	32
0	2000	0	0	0	0	0	32
0	2000	0	0	0	0	0	32



Machine model	SerialNo	Operating Hours	Reading Date
L120H	632016	3080	17/04/2019

**Water level warning in water separator**  
**Total number of occurrences = 0**

Op hours	Year	Month	Day	Hour	Minute	Duration (min)
* 0	2000	0	0	0	0	0
* 0	2000	0	0	0	0	0
* 0	2000	0	0	0	0	0
* 0	2000	0	0	0	0	0
* 0	2000	0	0	0	0	0
* 0	2000	0	0	0	0	0
* 0	2000	0	0	0	0	0
* 0	2000	0	0	0	0	0
* 0	2000	0	0	0	0	0
* 0	2000	0	0	0	0	0
* 0	2000	0	0	0	0	0
* 0	2000	0	0	0	0	0
* 0	2000	0	0	0	0	0
* 0	2000	0	0	0	0	0
* 0	2000	0	0	0	0	0
* 0	2000	0	0	0	0	0
* 0	2000	0	0	0	0	0
* 0	2000	0	0	0	0	0
* 0	2000	0	0	0	0	0
* 0	2000	0	0	0	0	0
* 0	2000	0	0	0	0	0



Machine model	SerialNo	Operating Hours	Reading Date
L120H	632016	3080	17/04/2019

**High voltage  
Total number of occurrences = 0**

Op hours	Year	Month	Day	Hour	Minute	Duration (seconds)	Extreme value
0	2000	0	0	0	0	0	0
0	2000	0	0	0	0	0	0
0	2000	0	0	0	0	0	0
0	2000	0	0	0	0	0	0
0	2000	0	0	0	0	0	0
0	2000	0	0	0	0	0	0
0	2000	0	0	0	0	0	0
0	2000	0	0	0	0	0	0
0	2000	0	0	0	0	0	0
0	2000	0	0	0	0	0	0
0	2000	0	0	0	0	0	0
0	2000	0	0	0	0	0	0
0	2000	0	0	0	0	0	0
0	2000	0	0	0	0	0	0
0	2000	0	0	0	0	0	0
0	2000	0	0	0	0	0	0
0	2000	0	0	0	0	0	0
0	2000	0	0	0	0	0	0
0	2000	0	0	0	0	0	0
0	2000	0	0	0	0	0	0
0	2000	0	0	0	0	0	0



Machine model	SerialNo	Operating Hours	Reading Date
L120H	632016	3080	17/04/2019

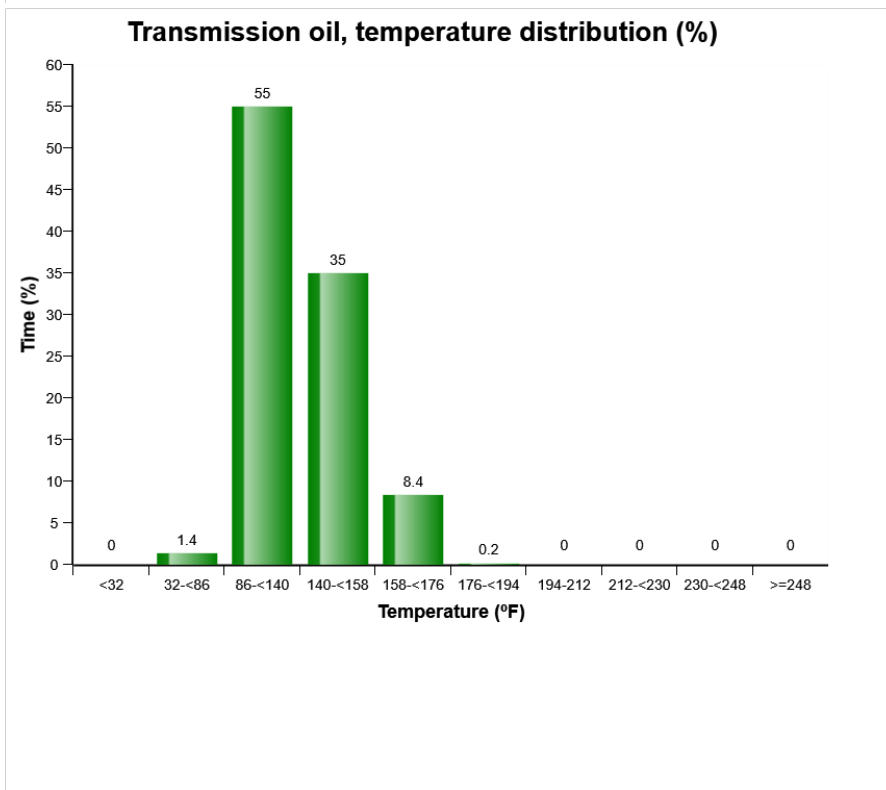
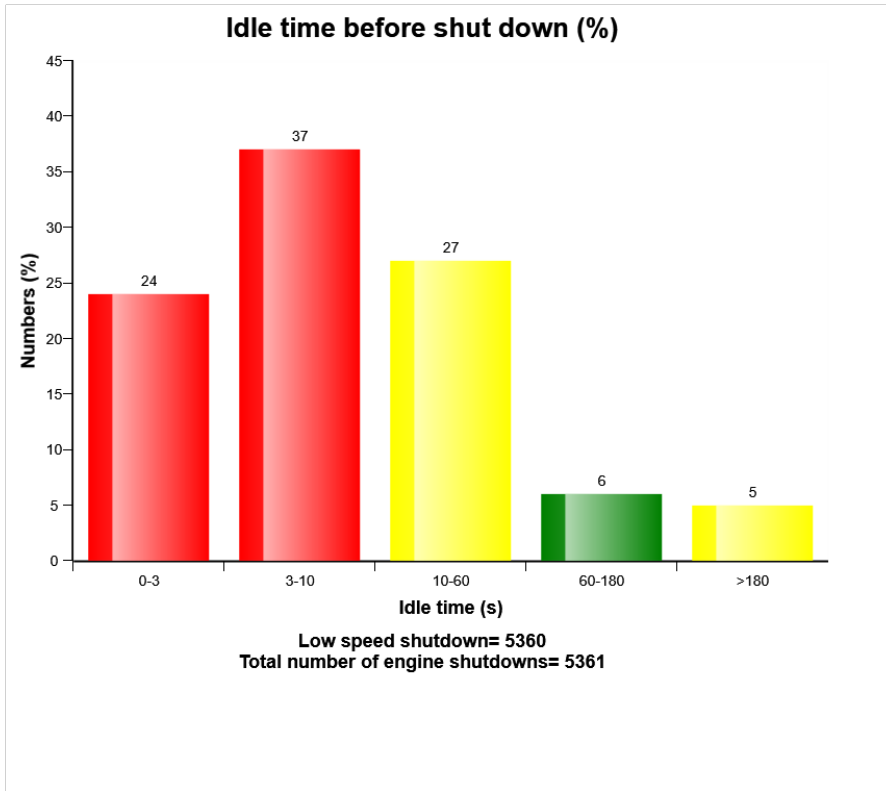
**Low voltage**  
**Total number of occurrences = 0**

Op hours	Year	Month	Day	Hour	Minute	Duration (seconds)	Extreme value
0	2000	0	0	0	0	0	0
0	2000	0	0	0	0	0	0
0	2000	0	0	0	0	0	0
0	2000	0	0	0	0	0	0
0	2000	0	0	0	0	0	0
0	2000	0	0	0	0	0	0
0	2000	0	0	0	0	0	0
0	2000	0	0	0	0	0	0
0	2000	0	0	0	0	0	0
0	2000	0	0	0	0	0	0
0	2000	0	0	0	0	0	0
0	2000	0	0	0	0	0	0
0	2000	0	0	0	0	0	0
0	2000	0	0	0	0	0	0
0	2000	0	0	0	0	0	0
0	2000	0	0	0	0	0	0
0	2000	0	0	0	0	0	0
0	2000	0	0	0	0	0	0
0	2000	0	0	0	0	0	0
0	2000	0	0	0	0	0	0
0	2000	0	0	0	0	0	0
0	2000	0	0	0	0	0	0
0	2000	0	0	0	0	0	0
0	2000	0	0	0	0	0	0

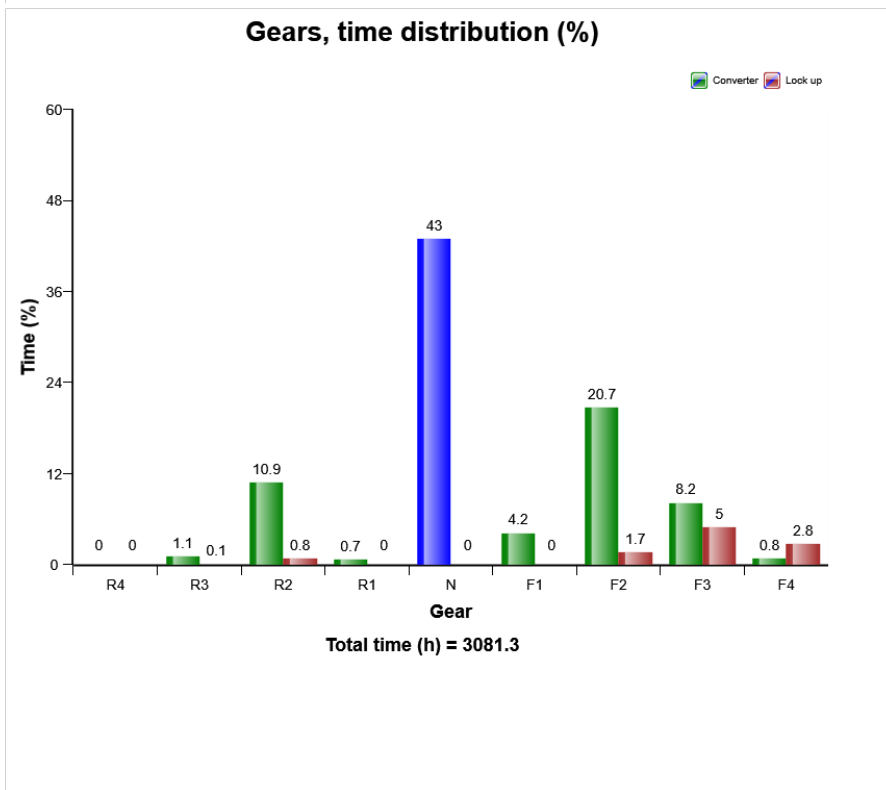
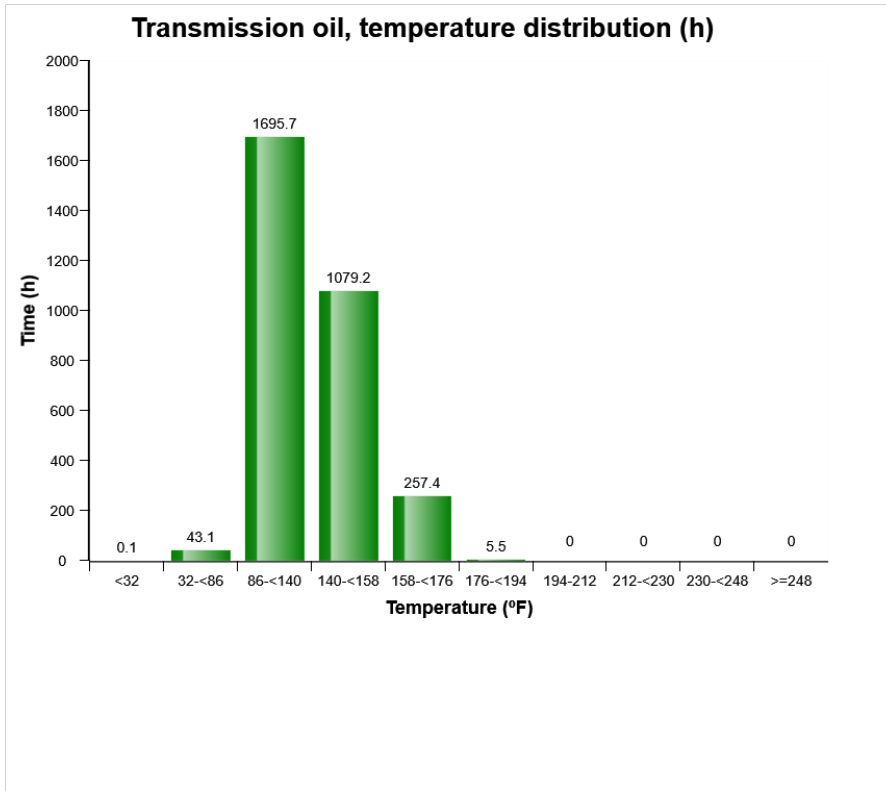




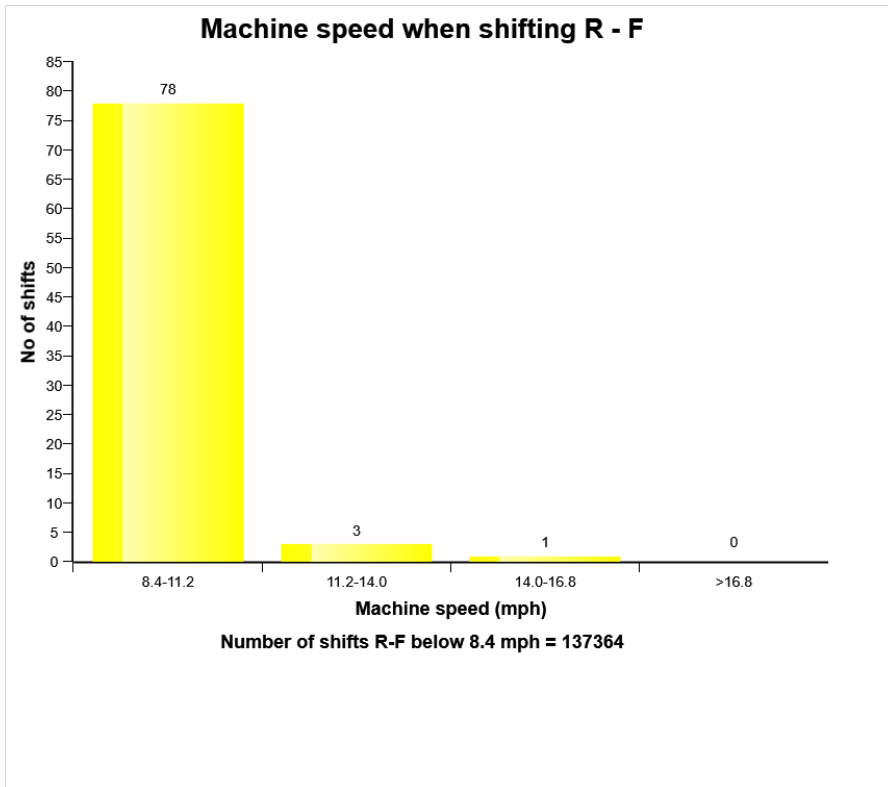
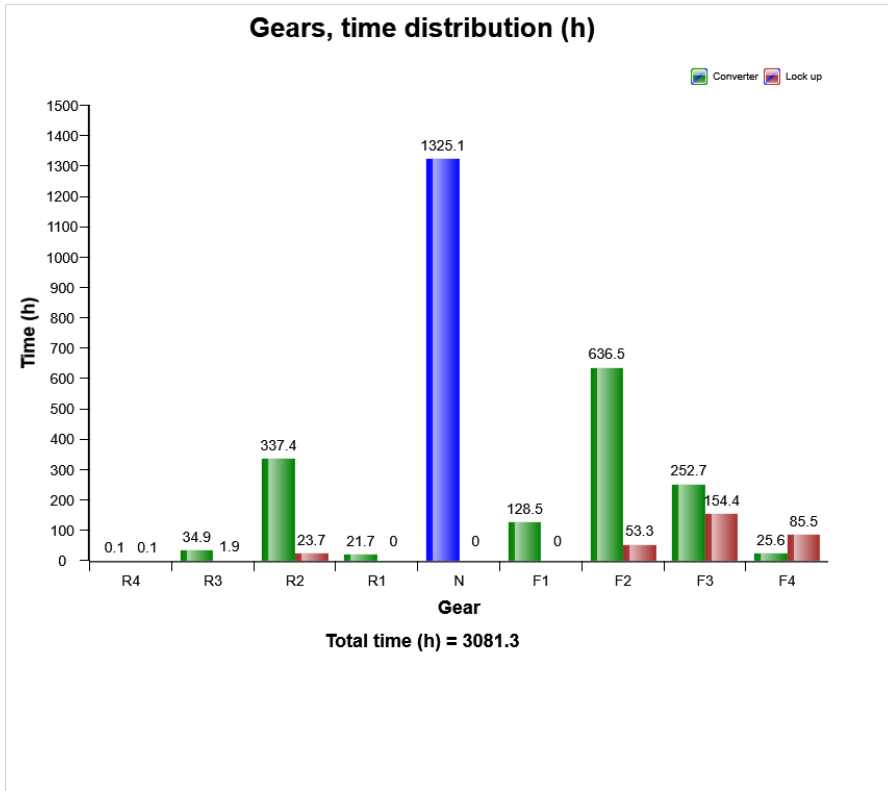
Machine model	SerialNo	Operating Hours	Reading Date
L120H	632016	3080	17/04/2019



Machine model	SerialNo	Operating Hours	Reading Date
L120H	632016	3080	17/04/2019



Machine model	SerialNo	Operating Hours	Reading Date
L120H	632016	3080	17/04/2019



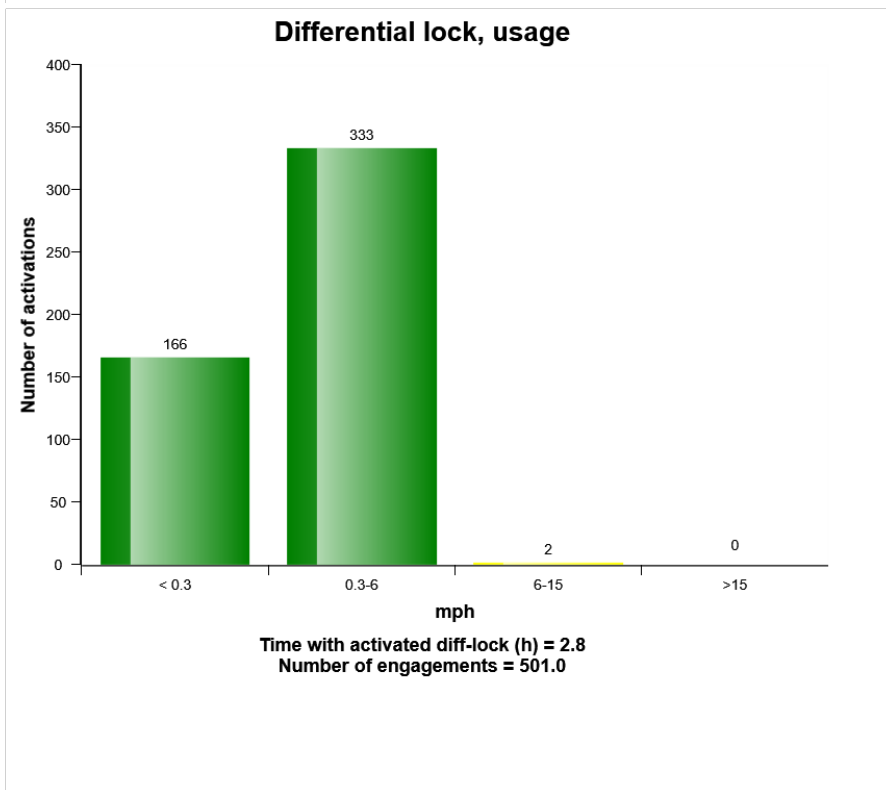
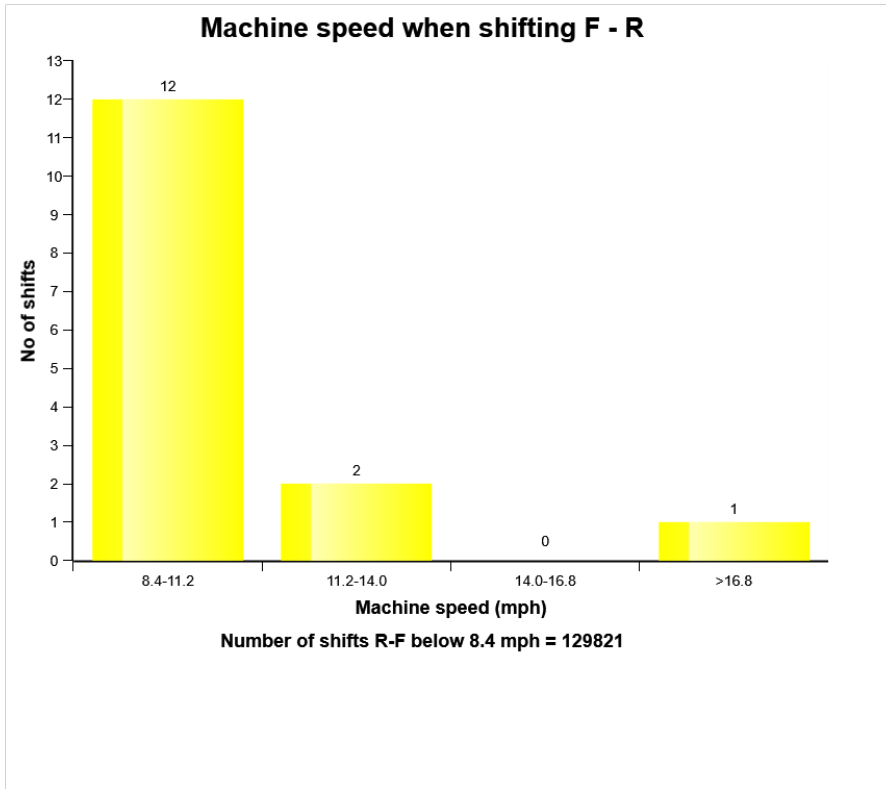
Machine model	SerialNo	Operating Hours	Reading Date
L120H	632016	3080	17/04/2019

**Transmission oil temperature high**  
**Total number of occurrences = 0**

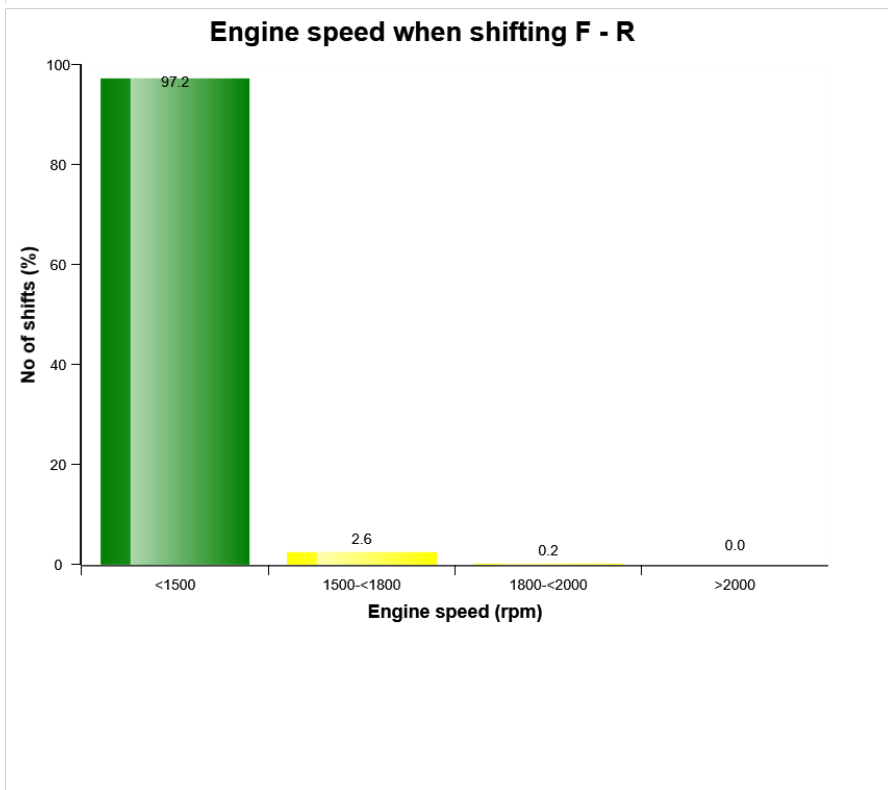
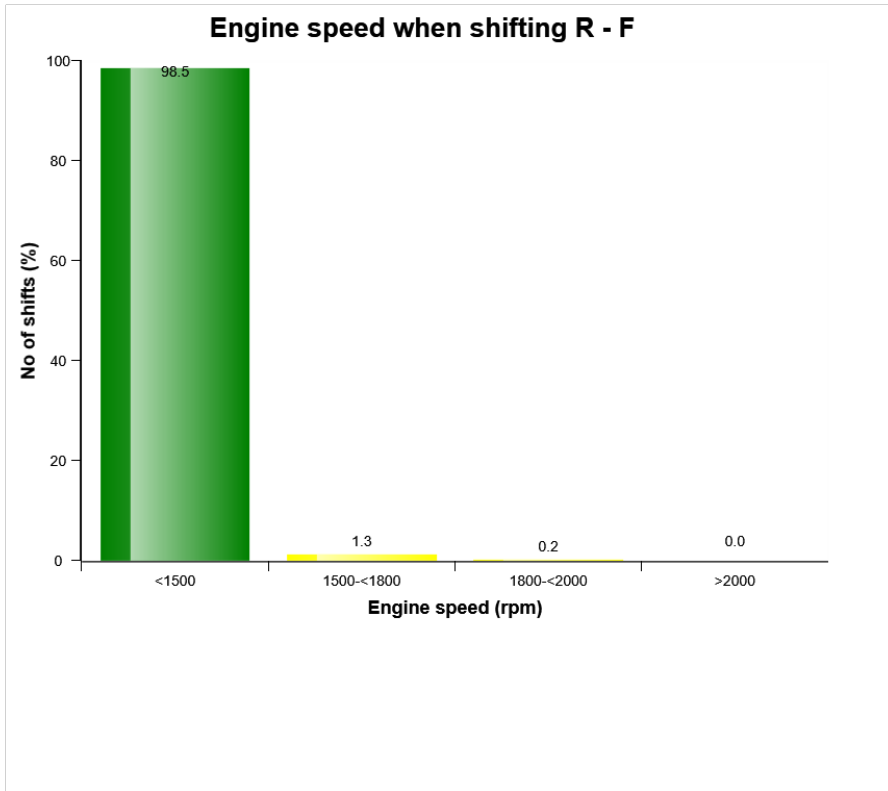
Op hours	Year	Month	Day	Hour	Minute	Duration (seconds)	Extreme (° F)
0	2000	0	0	0	0	0	32
0	2000	0	0	0	0	0	32
0	2000	0	0	0	0	0	32
0	2000	0	0	0	0	0	32
0	2000	0	0	0	0	0	32
0	2000	0	0	0	0	0	32
0	2000	0	0	0	0	0	32
0	2000	0	0	0	0	0	32
0	2000	0	0	0	0	0	32
0	2000	0	0	0	0	0	32
0	2000	0	0	0	0	0	32
0	2000	0	0	0	0	0	32
0	2000	0	0	0	0	0	32
0	2000	0	0	0	0	0	32
0	2000	0	0	0	0	0	32
0	2000	0	0	0	0	0	32
0	2000	0	0	0	0	0	32
0	2000	0	0	0	0	0	32
0	2000	0	0	0	0	0	32
0	2000	0	0	0	0	0	32
0	2000	0	0	0	0	0	32
0	2000	0	0	0	0	0	32
0	2000	0	0	0	0	0	32
0	2000	0	0	0	0	0	32



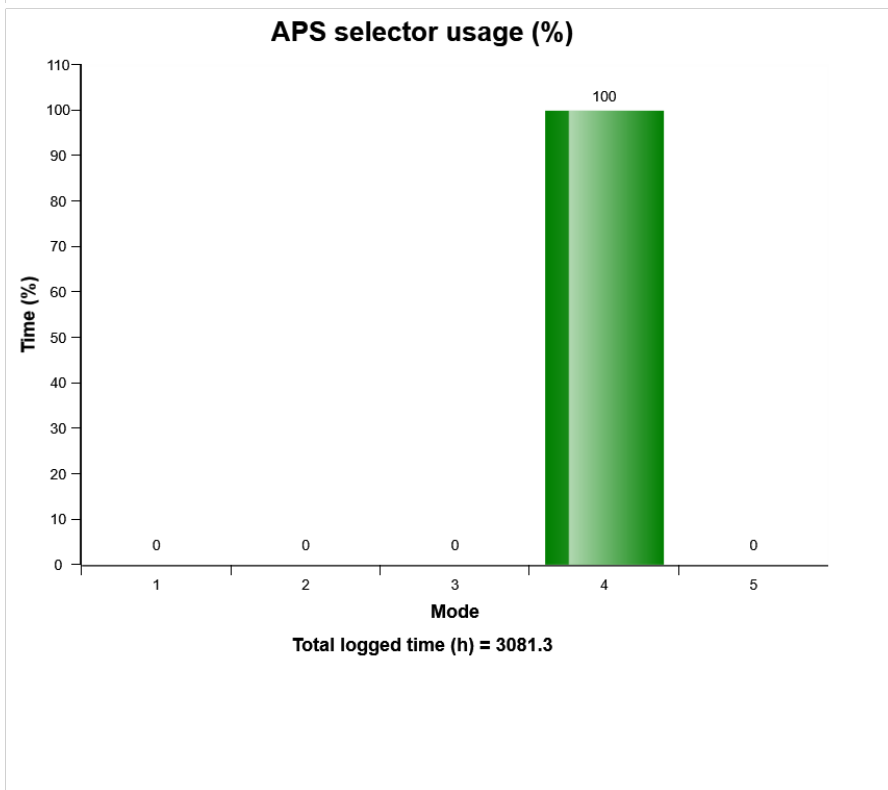
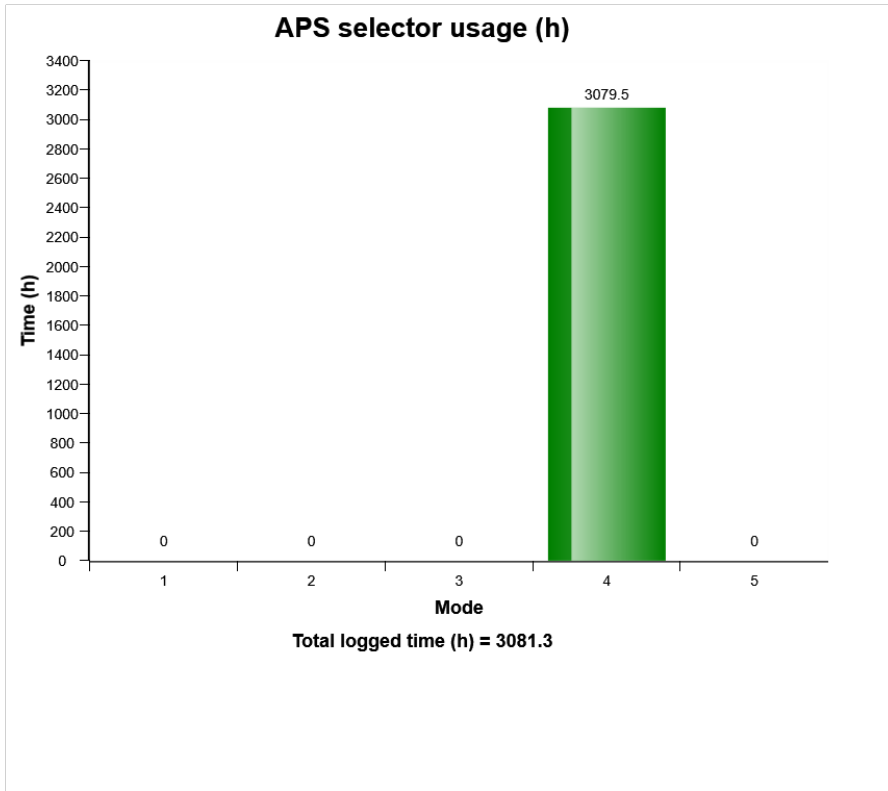
Machine model	SerialNo	Operating Hours	Reading Date
L120H	632016	3080	17/04/2019



Machine model	SerialNo	Operating Hours	Reading Date
L120H	632016	3080	17/04/2019



Machine model	SerialNo	Operating Hours	Reading Date
L120H	632016	3080	17/04/2019



Machine model	SerialNo	Operating Hours	Reading Date
L120H	632016	3080	17/04/2019

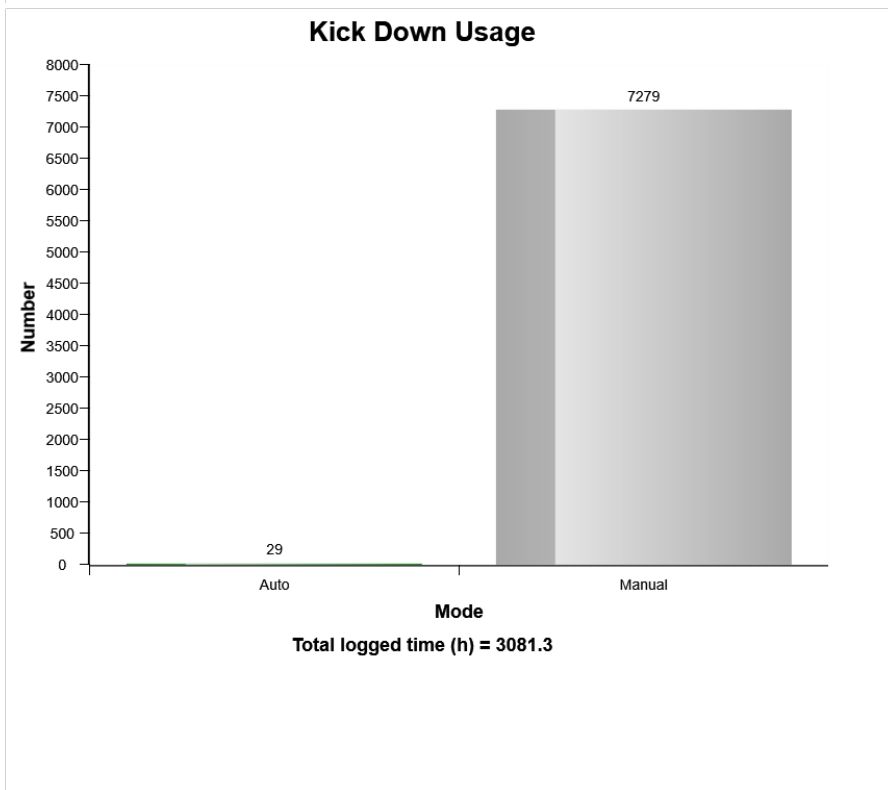
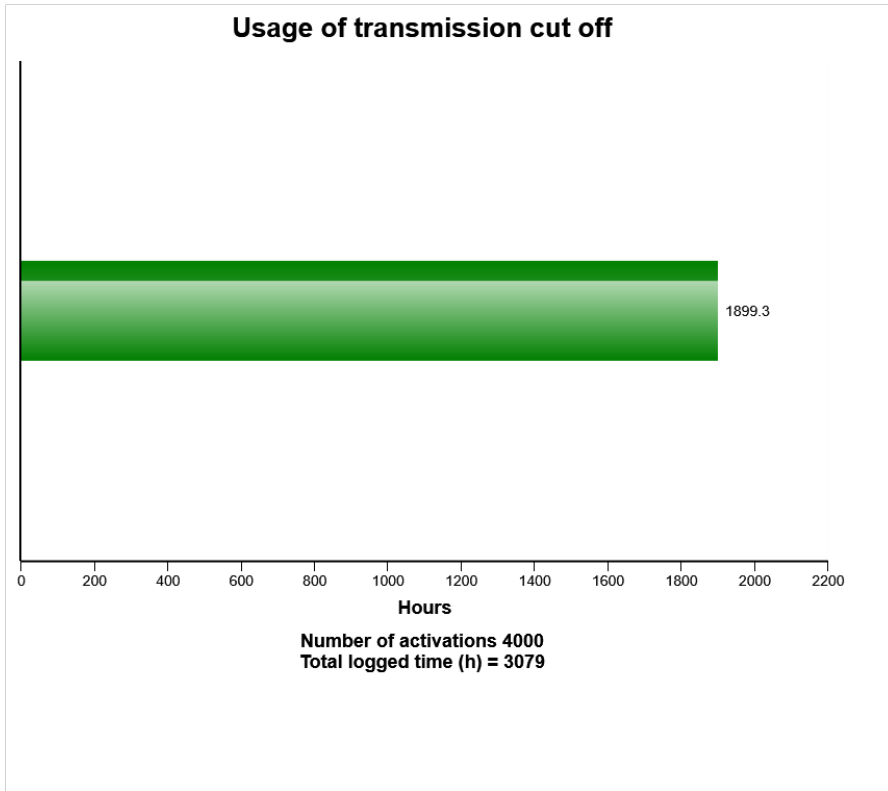
**Transmission oil pressure low  
Total number of occurrences = 0**

0	Year	Month	Day	Hour	Minute	Duration (seconds)	Extreme (psi)
0	2000	0	0	0	0	0	0
0	2000	0	0	0	0	0	0
0	2000	0	0	0	0	0	0
0	2000	0	0	0	0	0	0
0	2000	0	0	0	0	0	0
0	2000	0	0	0	0	0	0
0	2000	0	0	0	0	0	0
0	2000	0	0	0	0	0	0
0	2000	0	0	0	0	0	0
0	2000	0	0	0	0	0	0
0	2000	0	0	0	0	0	0
0	2000	0	0	0	0	0	0
0	2000	0	0	0	0	0	0
0	2000	0	0	0	0	0	0
0	2000	0	0	0	0	0	0
0	2000	0	0	0	0	0	0
0	2000	0	0	0	0	0	0
0	2000	0	0	0	0	0	0
0	2000	0	0	0	0	0	0
0	2000	0	0	0	0	0	0

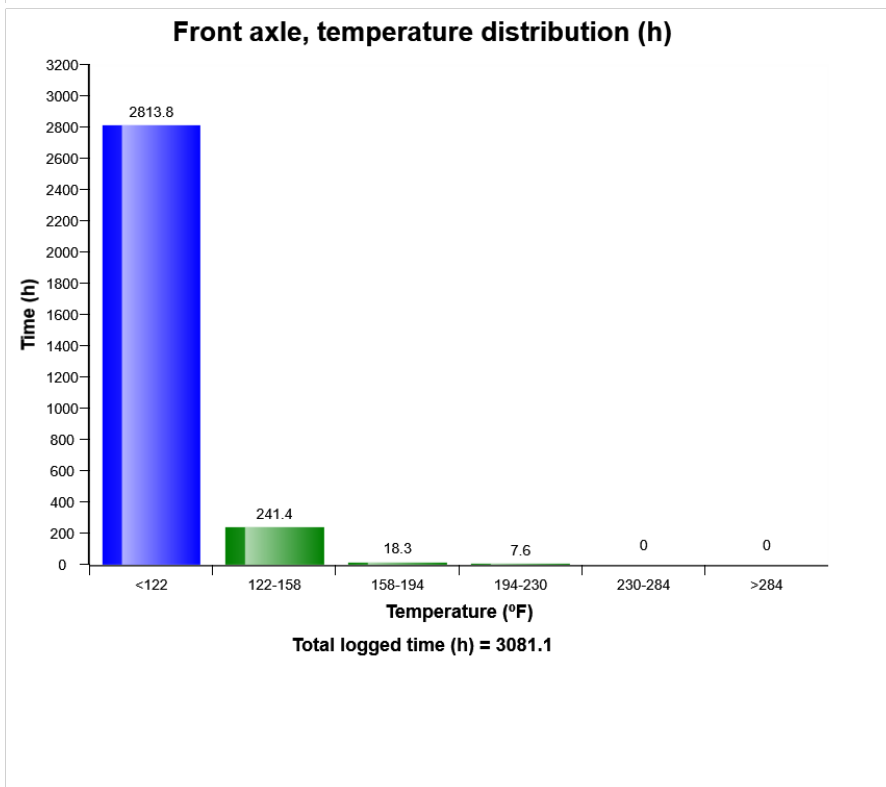
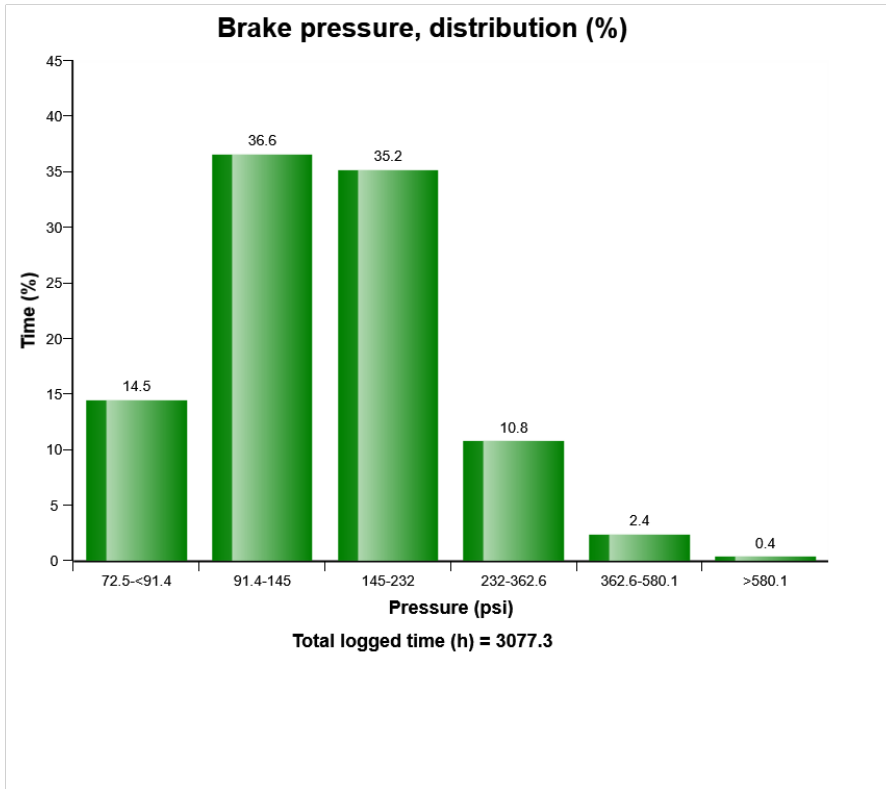




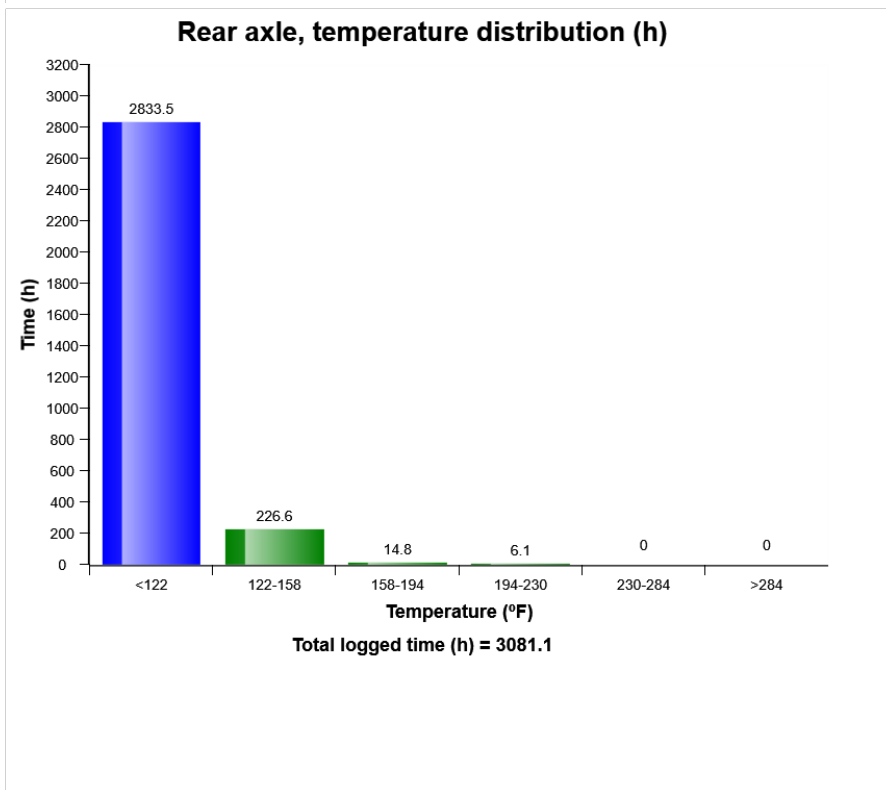
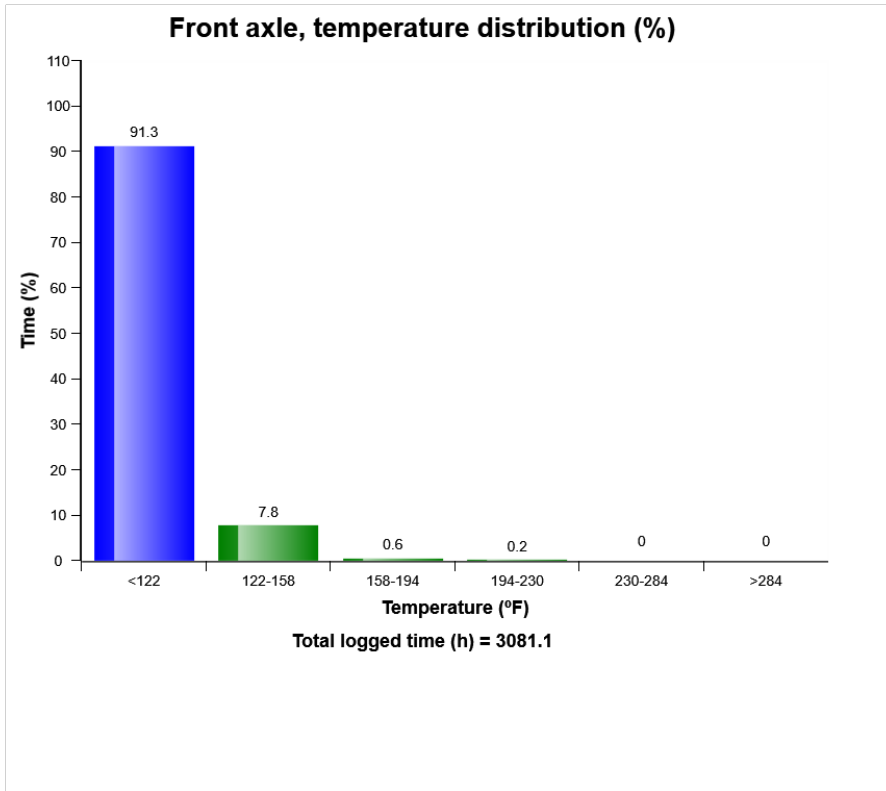
Machine model	SerialNo	Operating Hours	Reading Date
L120H	632016	3080	17/04/2019



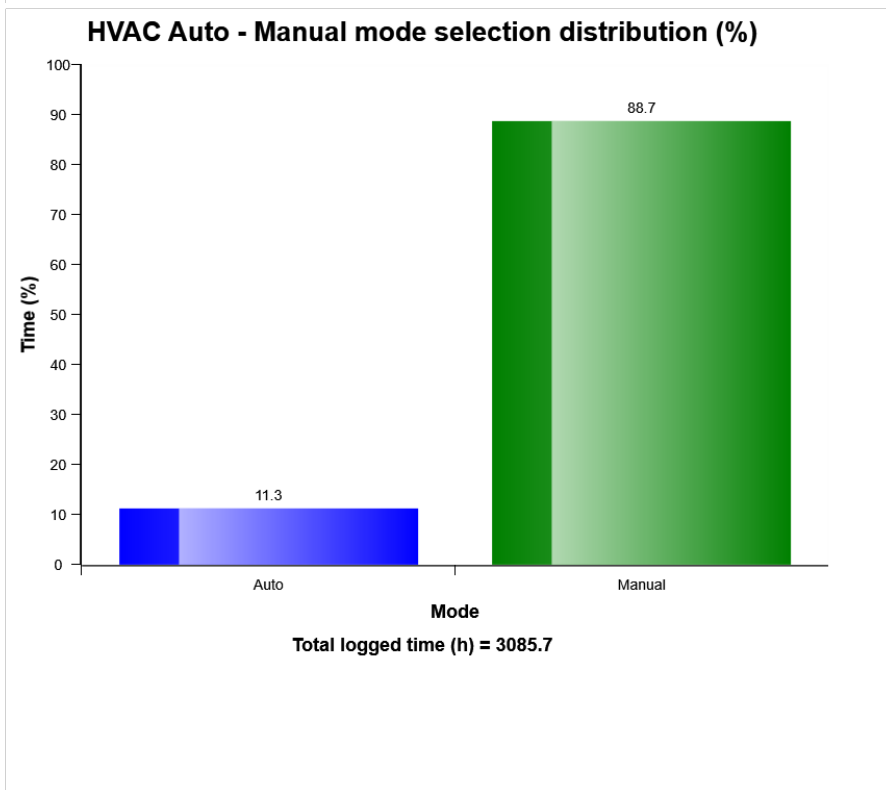
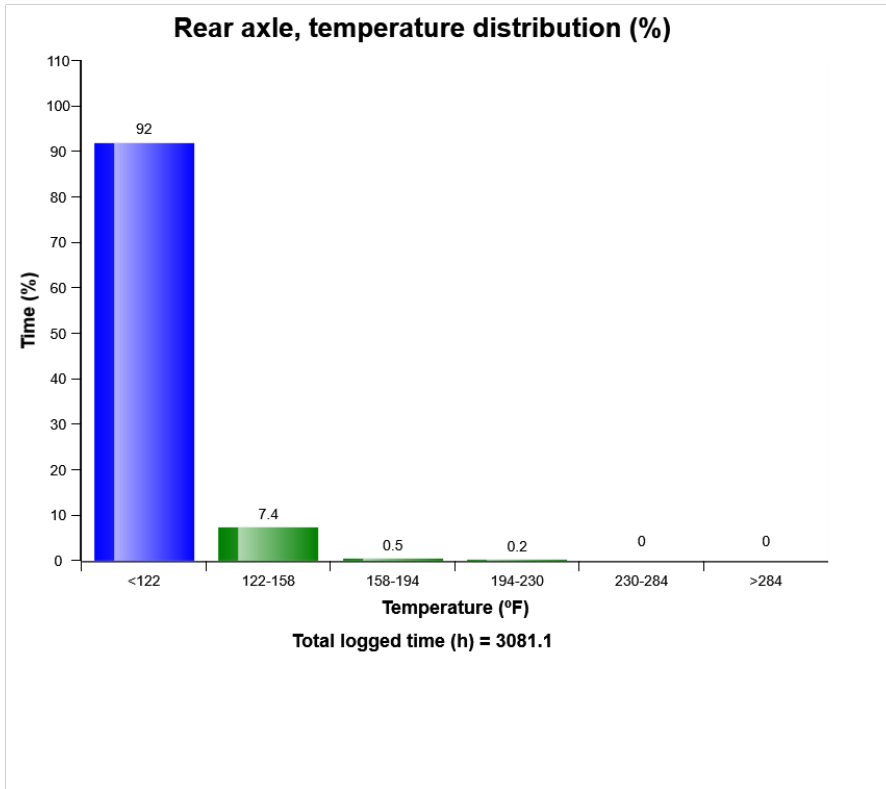
Machine model	SerialNo	Operating Hours	Reading Date
L120H	632016	3080	17/04/2019



Machine model	SerialNo	Operating Hours	Reading Date
L120H	632016	3080	17/04/2019

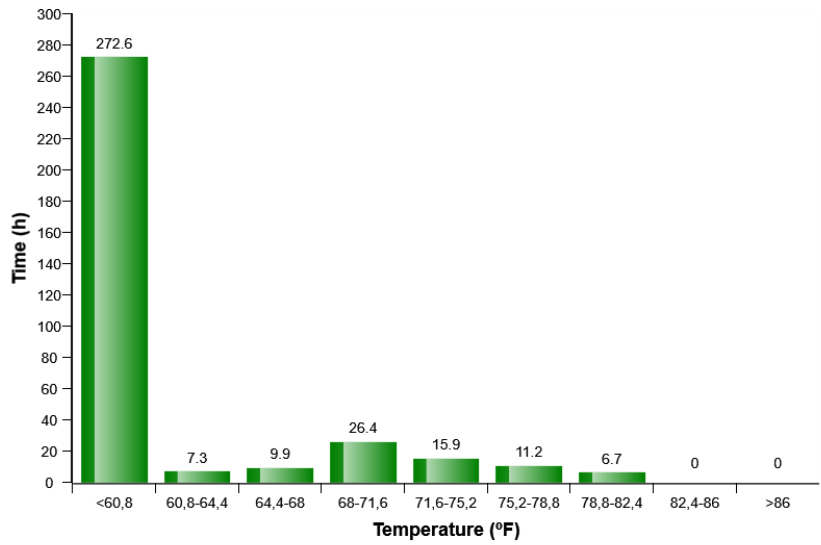


Machine model	SerialNo	Operating Hours	Reading Date
L120H	632016	3080	17/04/2019

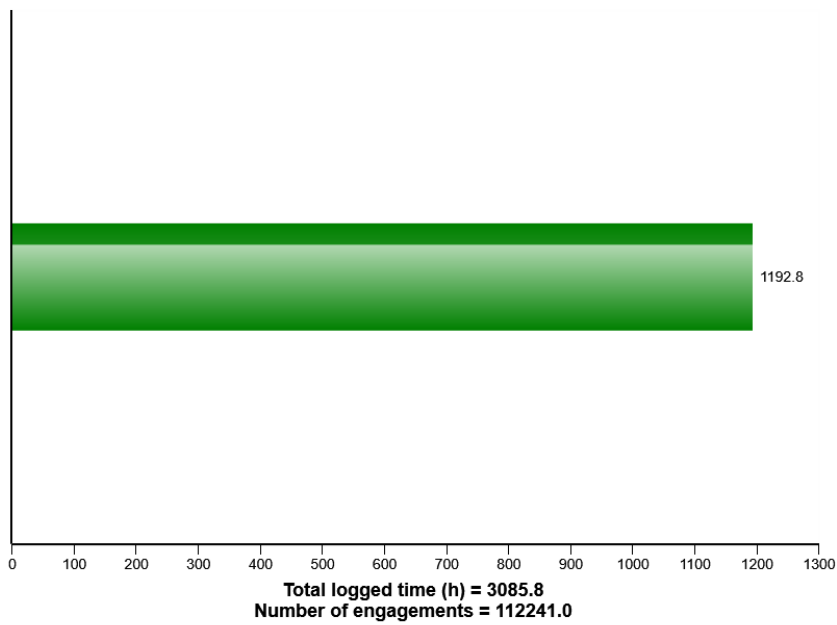


Machine model	SerialNo	Operating Hours	Reading Date
L120H	632016	3080	17/04/2019

### HVAC air temperature setting in auto control mode distribution (h)

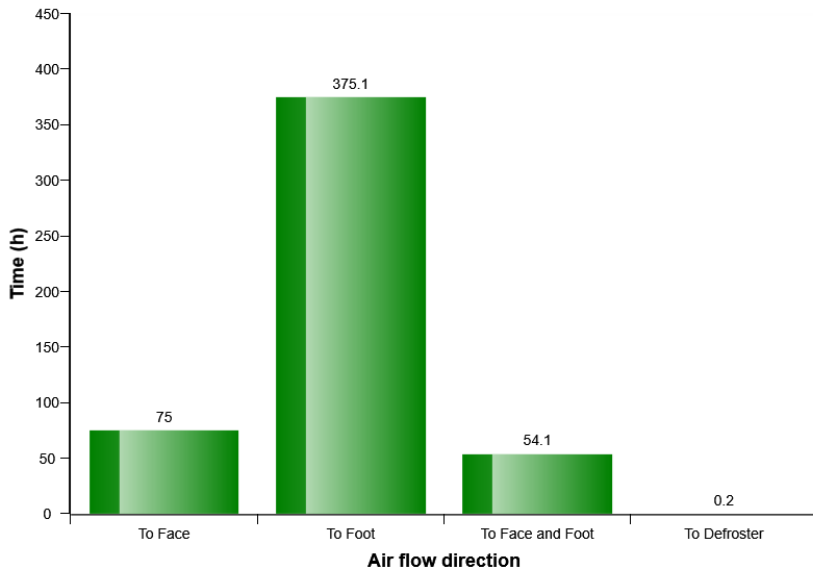


### AC Compressor usage

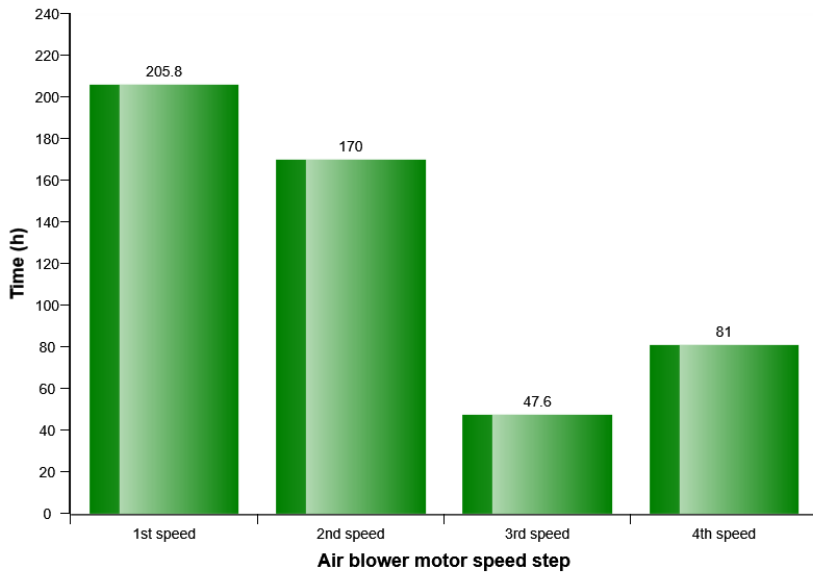


Machine model	SerialNo	Operating Hours	Reading Date
L120H	632016	3080	17/04/2019

**HVAC air flow direction in manual mode distribution (h)**



**HVAC air blower motor speed in manual mode distribution (h)**



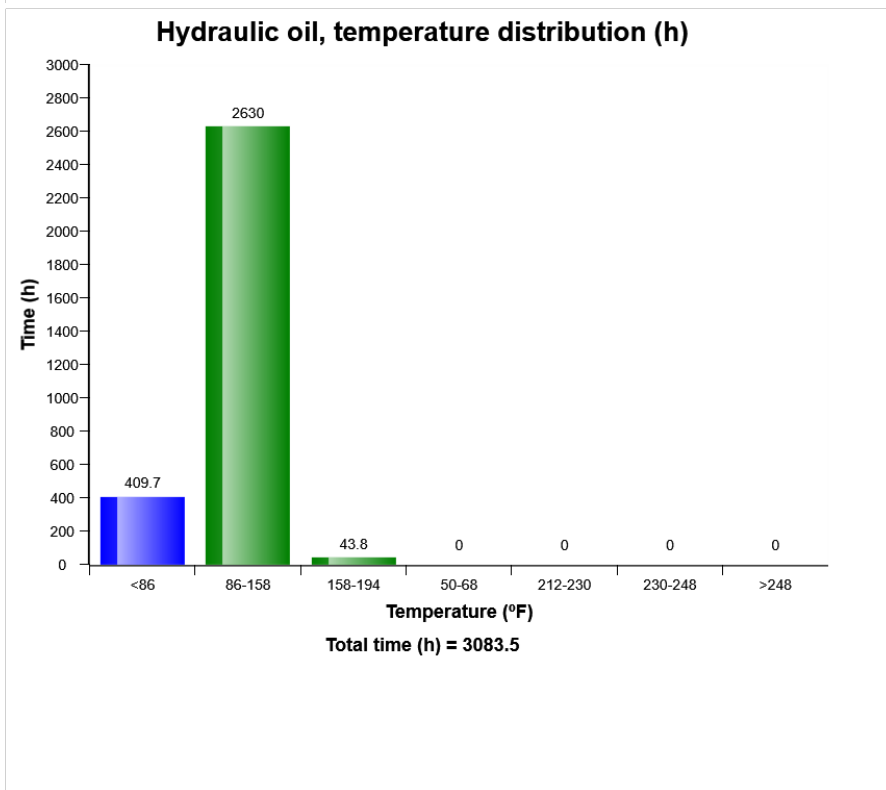
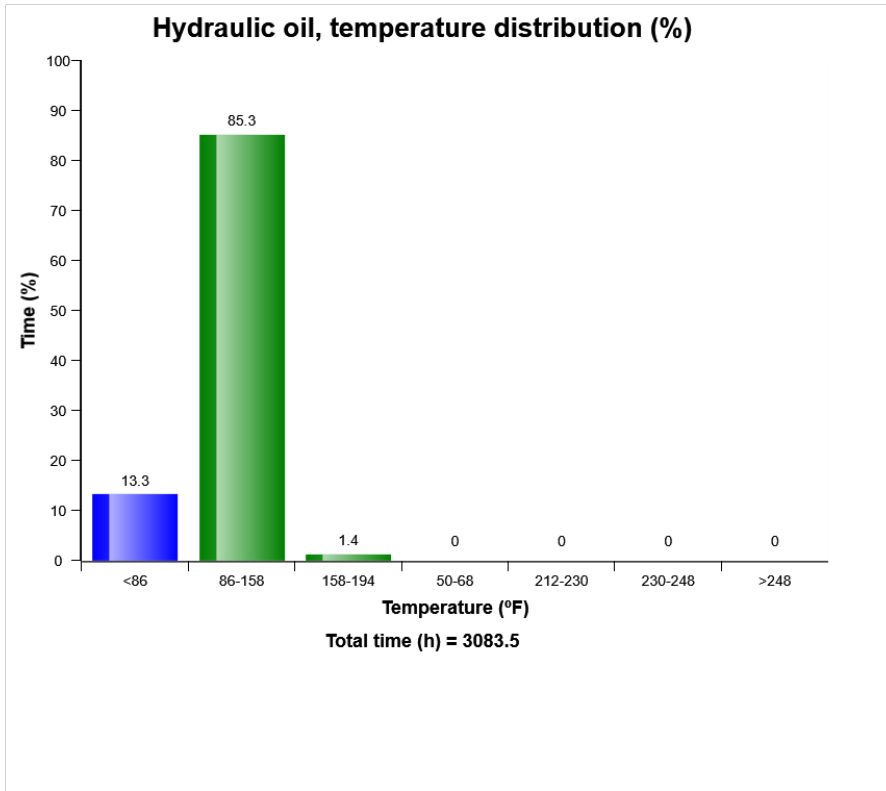
Machine model	SerialNo	Operating Hours	Reading Date
L120H	632016	3080	17/04/2019

**AC High Pressure**  
**Total number of occurrences = 0**

Op hours	Year	Month	Day	Hour	Minute	Duration (seconds)	Ambient temperature (°F)
0	2000	0	0	0	0	0	32
0	2000	0	0	0	0	0	32
0	2000	0	0	0	0	0	32
0	2000	0	0	0	0	0	32
0	2000	0	0	0	0	0	32
0	2000	0	0	0	0	0	32
0	2000	0	0	0	0	0	32
0	2000	0	0	0	0	0	32
0	2000	0	0	0	0	0	32
0	2000	0	0	0	0	0	32
0	2000	0	0	0	0	0	32
0	2000	0	0	0	0	0	32
0	2000	0	0	0	0	0	32
0	2000	0	0	0	0	0	32
0	2000	0	0	0	0	0	32
0	2000	0	0	0	0	0	32
0	2000	0	0	0	0	0	32
0	2000	0	0	0	0	0	32
0	2000	0	0	0	0	0	32
0	2000	0	0	0	0	0	32
0	2000	0	0	0	0	0	32
0	2000	0	0	0	0	0	32
0	2000	0	0	0	0	0	32
0	2000	0	0	0	0	0	32
0	2000	0	0	0	0	0	32
0	2000	0	0	0	0	0	32



Machine model	SerialNo	Operating Hours	Reading Date
L120H	632016	3080	17/04/2019





Machine model	SerialNo	Operating Hours	Reading Date
L120H	632016	3080	17/04/2019

**High hydraulic oil temperature  
Total number of occurrences = 0**

Op hours	Year	Month	Day	Hour	Minute	Duration (seconds)	Extreme (° F)
0	2000	0	0	0	0	0	32
0	2000	0	0	0	0	0	32
0	2000	0	0	0	0	0	32
0	2000	0	0	0	0	0	32
0	2000	0	0	0	0	0	32
0	2000	0	0	0	0	0	32
0	2000	0	0	0	0	0	32
0	2000	0	0	0	0	0	32
0	2000	0	0	0	0	0	32
0	2000	0	0	0	0	0	32
0	2000	0	0	0	0	0	32
0	2000	0	0	0	0	0	32
0	2000	0	0	0	0	0	32
0	2000	0	0	0	0	0	32
0	2000	0	0	0	0	0	32
0	2000	0	0	0	0	0	32
0	2000	0	0	0	0	0	32
0	2000	0	0	0	0	0	32
0	2000	0	0	0	0	0	32
0	2000	0	0	0	0	0	32
0	2000	0	0	0	0	0	32
0	2000	0	0	0	0	0	32
0	2000	0	0	0	0	0	32
0	2000	0	0	0	0	0	32
0	2000	0	0	0	0	0	32
0	2000	0	0	0	0	0	32
0	2000	0	0	0	0	0	32
0	2000	0	0	0	0	0	32
0	2000	0	0	0	0	0	32
0	2000	0	0	0	0	0	32
0	2000	0	0	0	0	0	32
0	2000	0	0	0	0	0	32
0	2000	0	0	0	0	0	32
0	2000	0	0	0	0	0	32
0	2000	0	0	0	0	0	32
0	2000	0	0	0	0	0	32
0	2000	0	0	0	0	0	32
0	2000	0	0	0	0	0	32
0	2000	0	0	0	0	0	32
0	2000	0	0	0	0	0	32
0	2000	0	0	0	0	0	32
0	2000	0	0	0	0	0	32



Machine model	SerialNo	Operating Hours	Reading Date
L120H	632016	3080	17/04/2019

**Low Hydraulic Oil Level**  
**Total number of occurrences = 0**

Op hours	Year	Month	Day	Hour	Minute	Duration (seconds)
0	2000	0	0	0	0	0
0	2000	0	0	0	0	0
0	2000	0	0	0	0	0
0	2000	0	0	0	0	0
0	2000	0	0	0	0	0
0	2000	0	0	0	0	0
0	2000	0	0	0	0	0
0	2000	0	0	0	0	0
0	2000	0	0	0	0	0
0	2000	0	0	0	0	0
0	2000	0	0	0	0	0
0	2000	0	0	0	0	0
0	2000	0	0	0	0	0
0	2000	0	0	0	0	0
0	2000	0	0	0	0	0
0	2000	0	0	0	0	0
0	2000	0	0	0	0	0
0	2000	0	0	0	0	0
0	2000	0	0	0	0	0
0	2000	0	0	0	0	0

