

# VOLVO CONSTRUCTION EQUIPMENT MATRIS REPORT

Machine model <b>A40G</b>	SerialNo <b>342113</b>	Operating Hours <b>5036.4</b>	Reading Date <b>17/07/2019</b>
Company name <b>Asset Appraisal Services</b>	Dealer	Report Issuer	
Contact name	Technician <b>Tilden Swallow</b>	Primary Application <b>Earth moving construction</b>	
Site	Workorder	Ground Condition	

MATRIS Reading, Summary / Recommendation

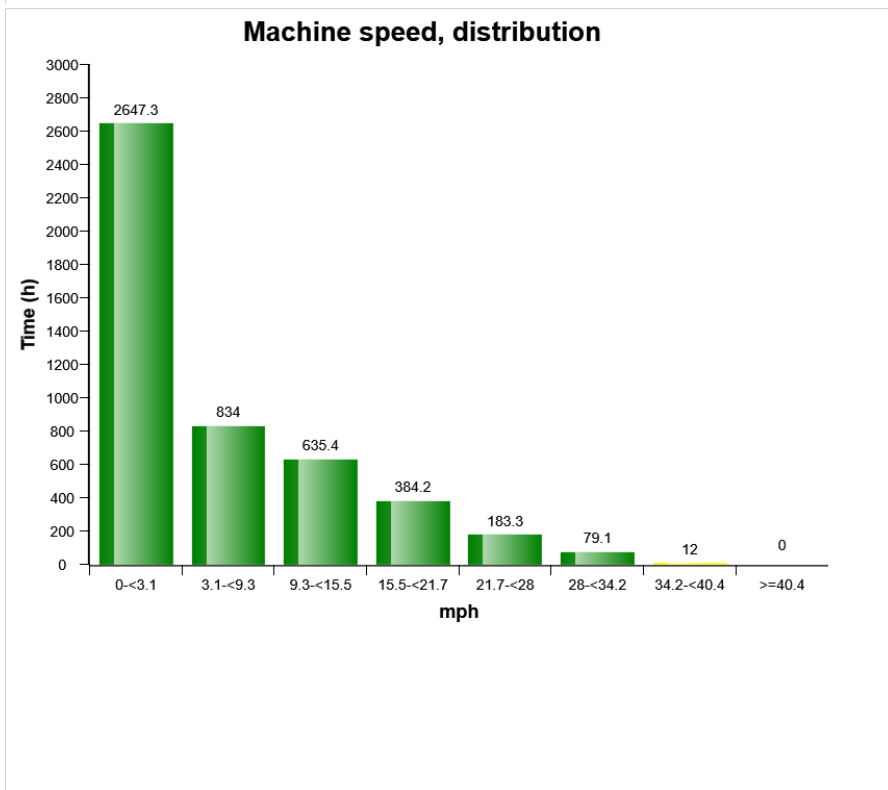
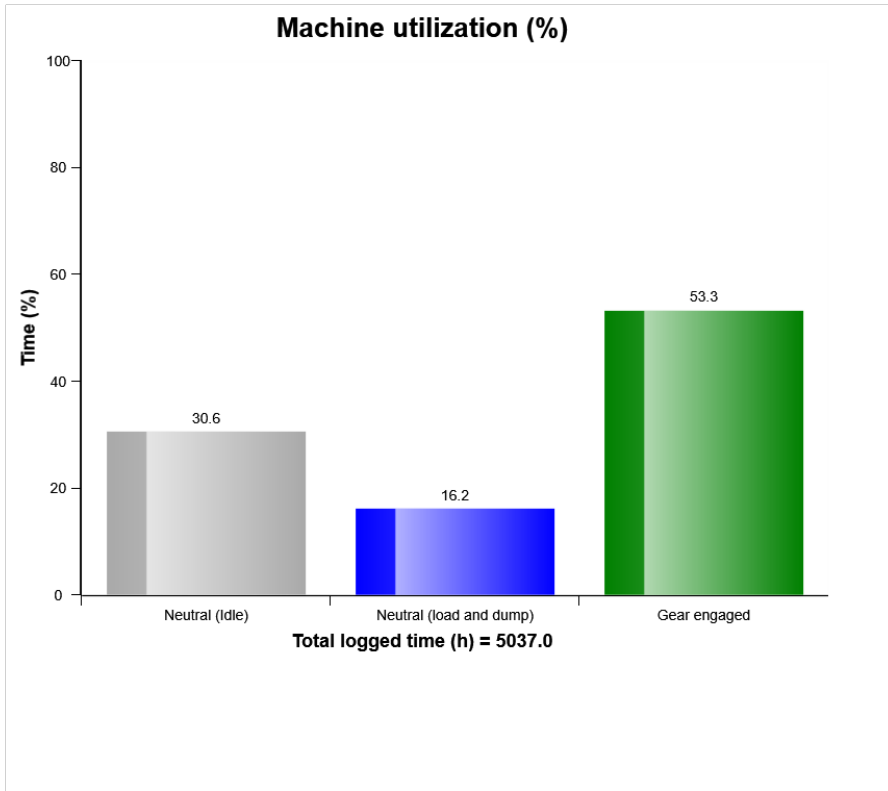


Machine model	SerialNo	Operating Hours	Reading Date
A40G	342113	5036.4	17/07/2019

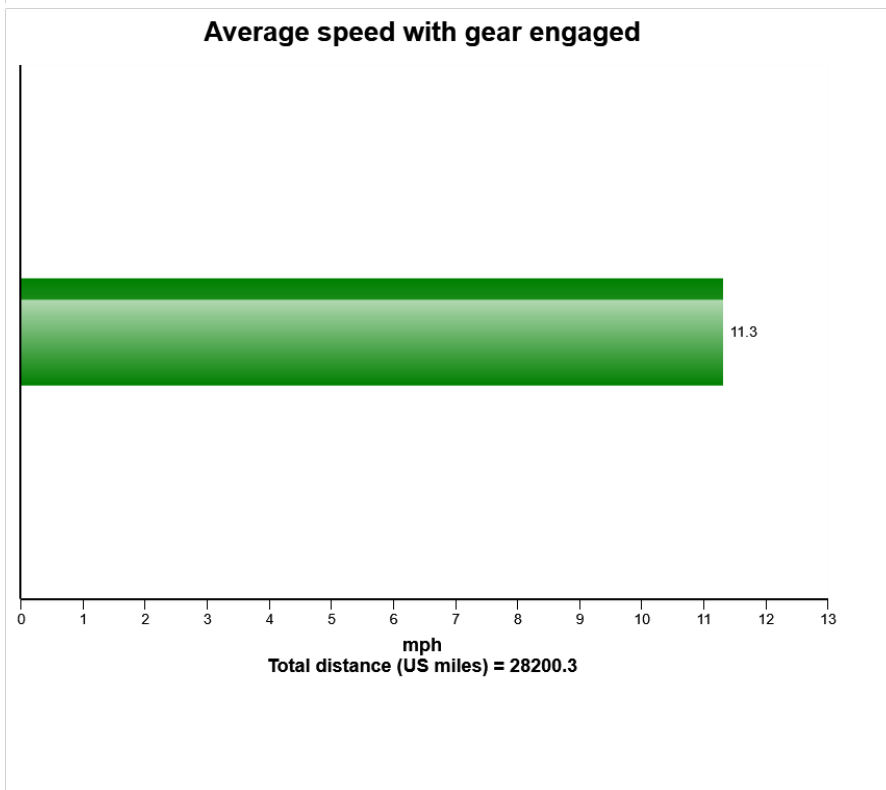
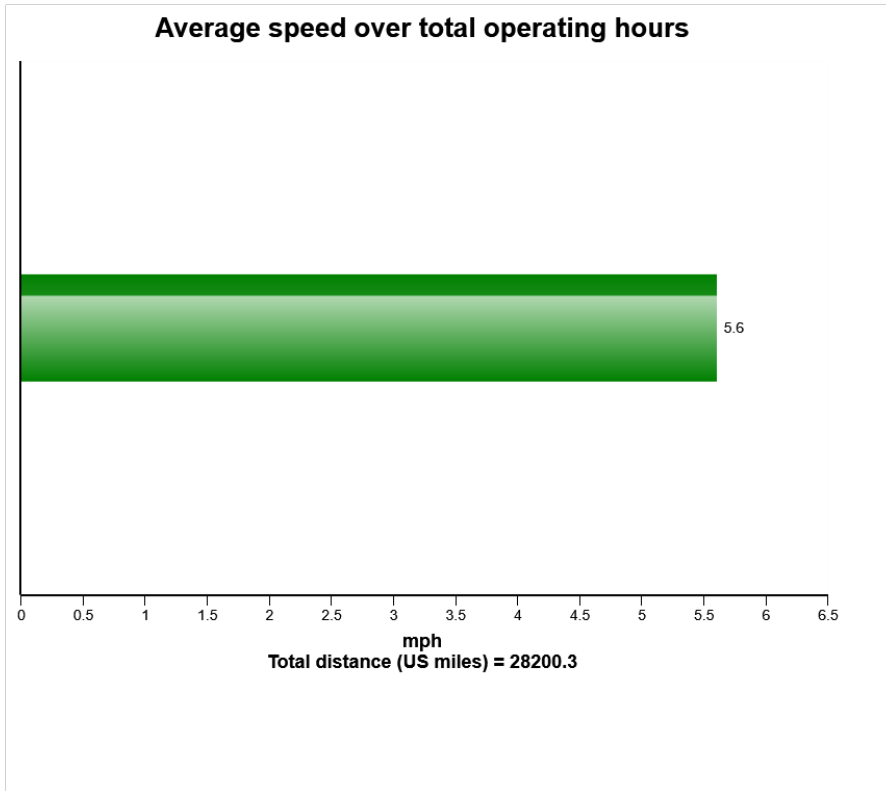
Main equipment	Type	Equipment
	Tyre size/class	Sold without tyres
	Body extensions	Not mounted
	Tail-gate	Not mounted
	Extra spillguard	Not mounted
	Wear plates	Not mounted
	Pattern	None



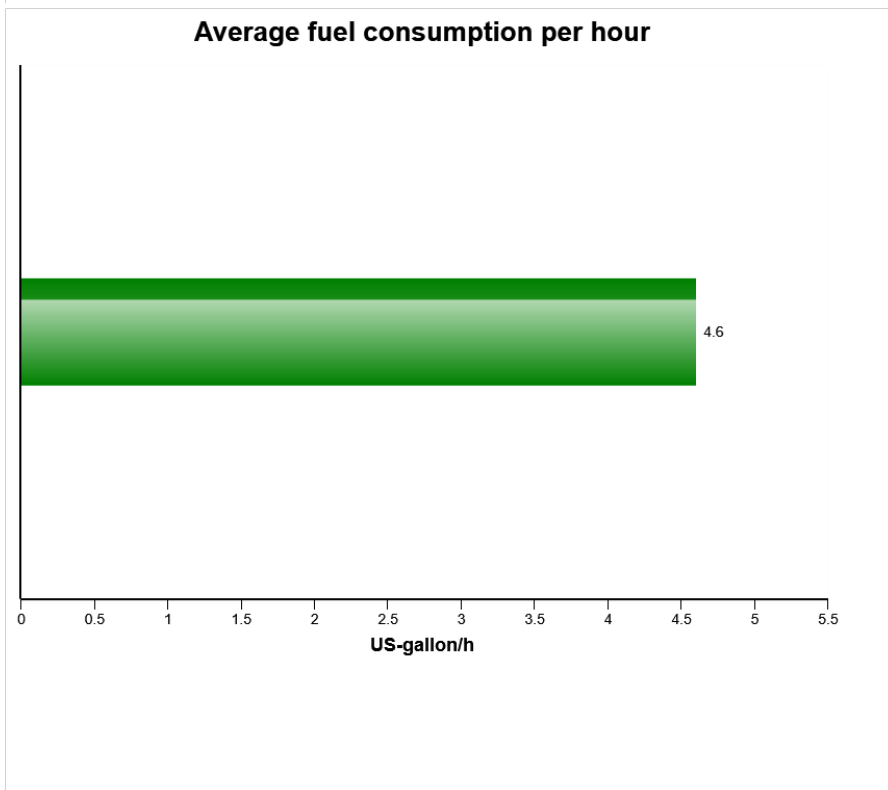
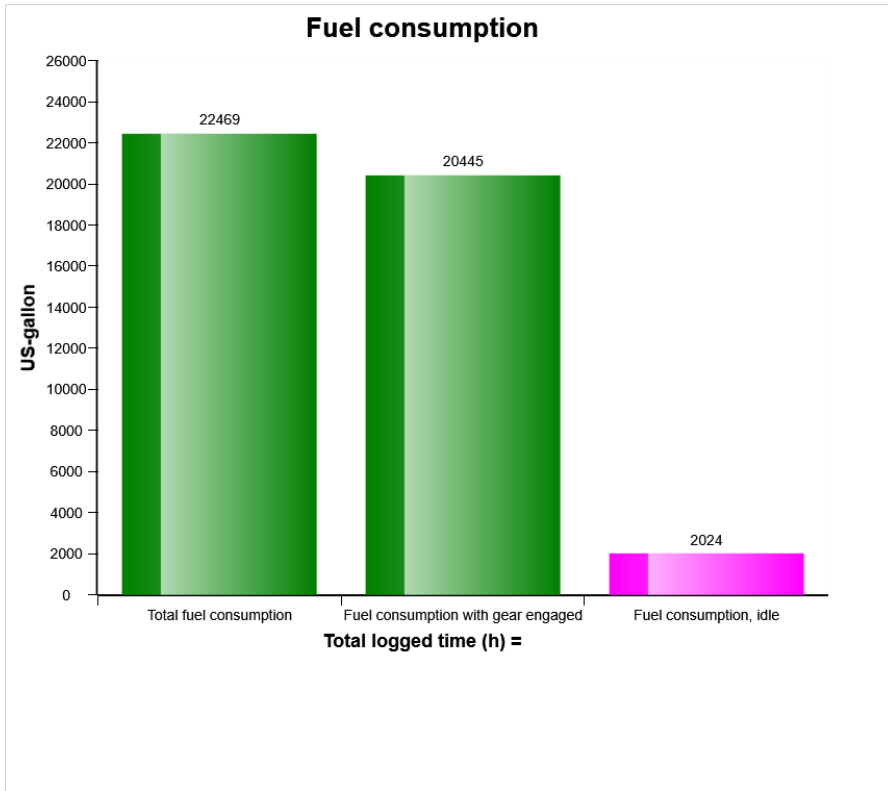
Machine model	SerialNo	Operating Hours	Reading Date
A40G	342113	5036.4	17/07/2019



Machine model	SerialNo	Operating Hours	Reading Date
A40G	342113	5036.4	17/07/2019

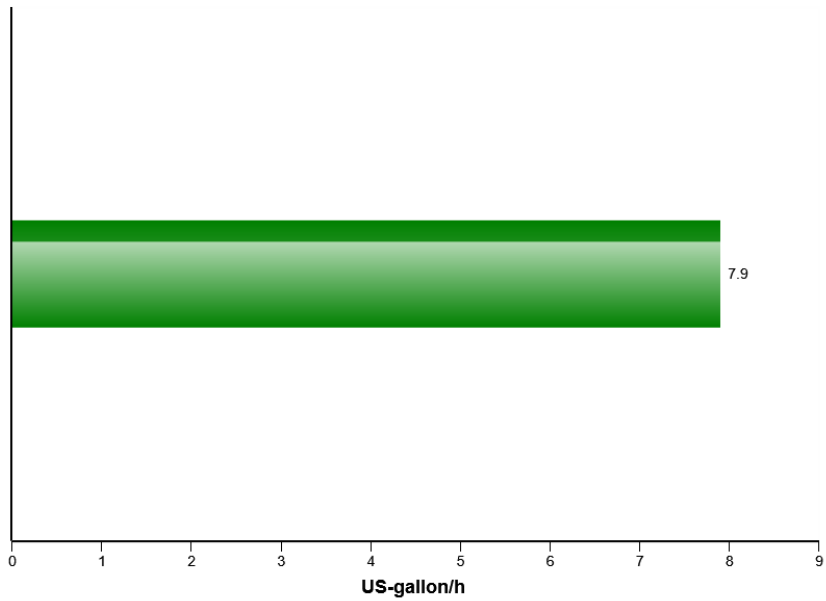


Machine model	SerialNo	Operating Hours	Reading Date
A40G	342113	5036.4	17/07/2019

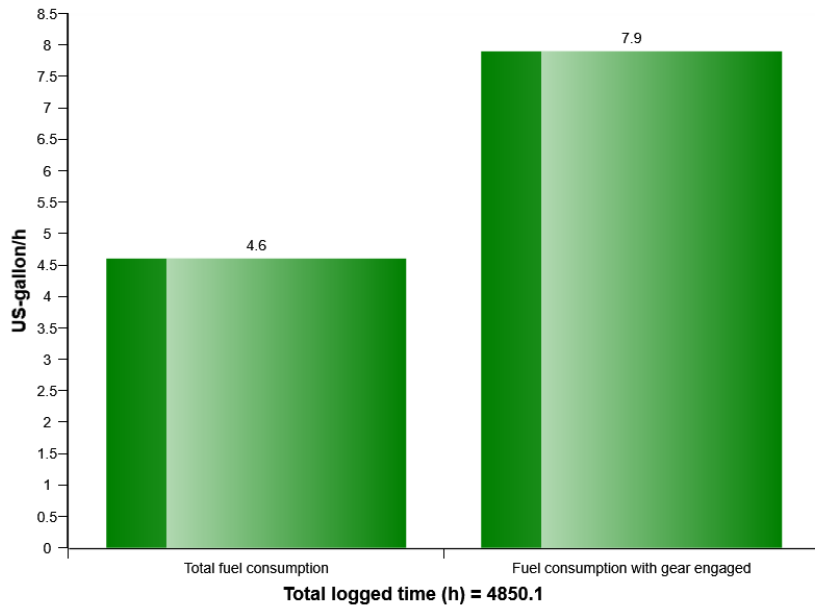


Machine model	SerialNo	Operating Hours	Reading Date
A40G	342113	5036.4	17/07/2019

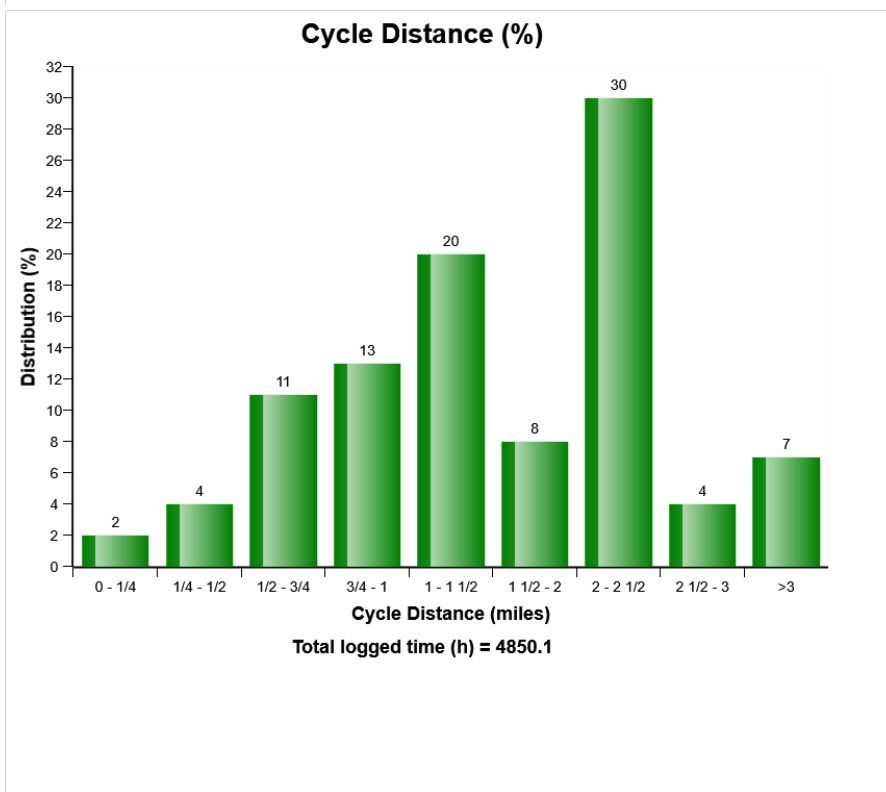
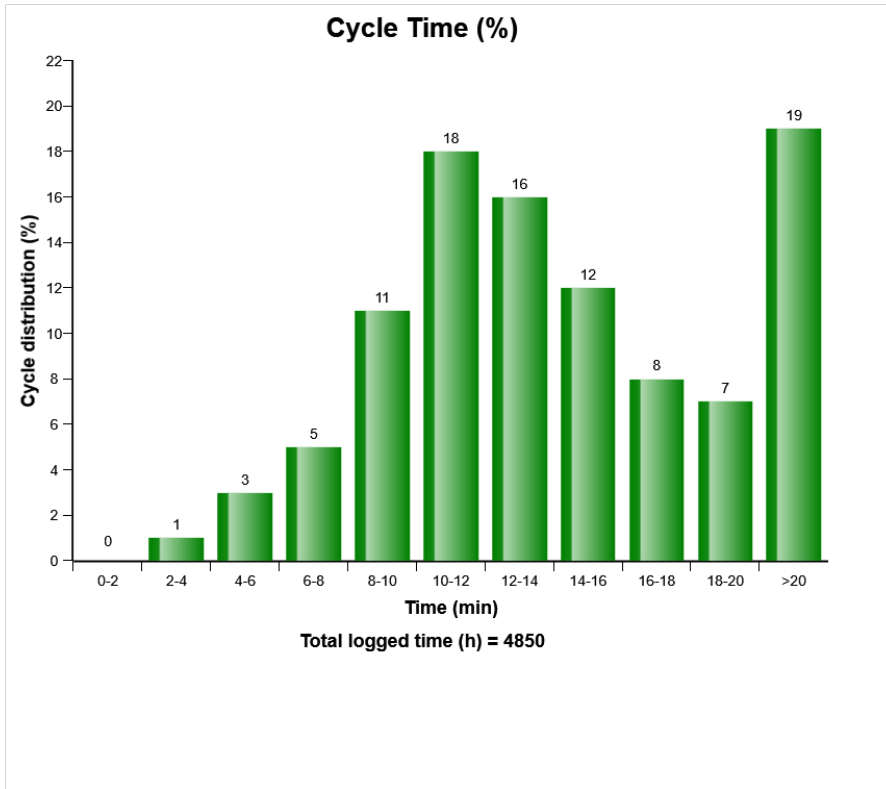
### Average fuel consumption per hour with gear engaged



### Average fuel consumption



Machine model	SerialNo	Operating Hours	Reading Date
A40G	342113	5036.4	17/07/2019



Machine model	SerialNo	Operating Hours	Reading Date
A40G	342113	5036.4	17/07/2019

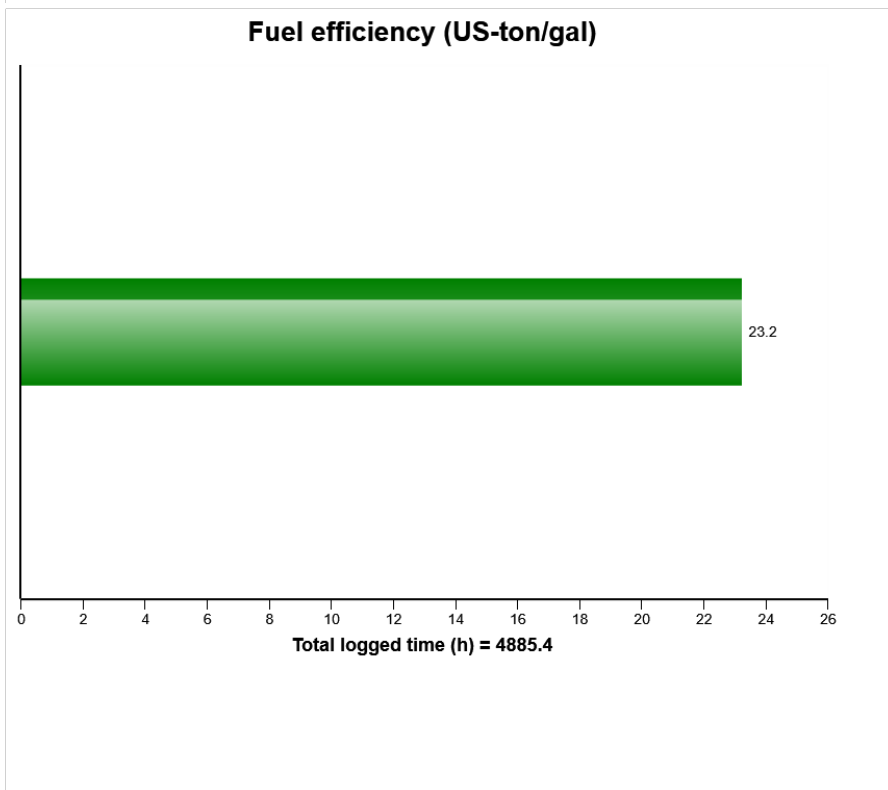
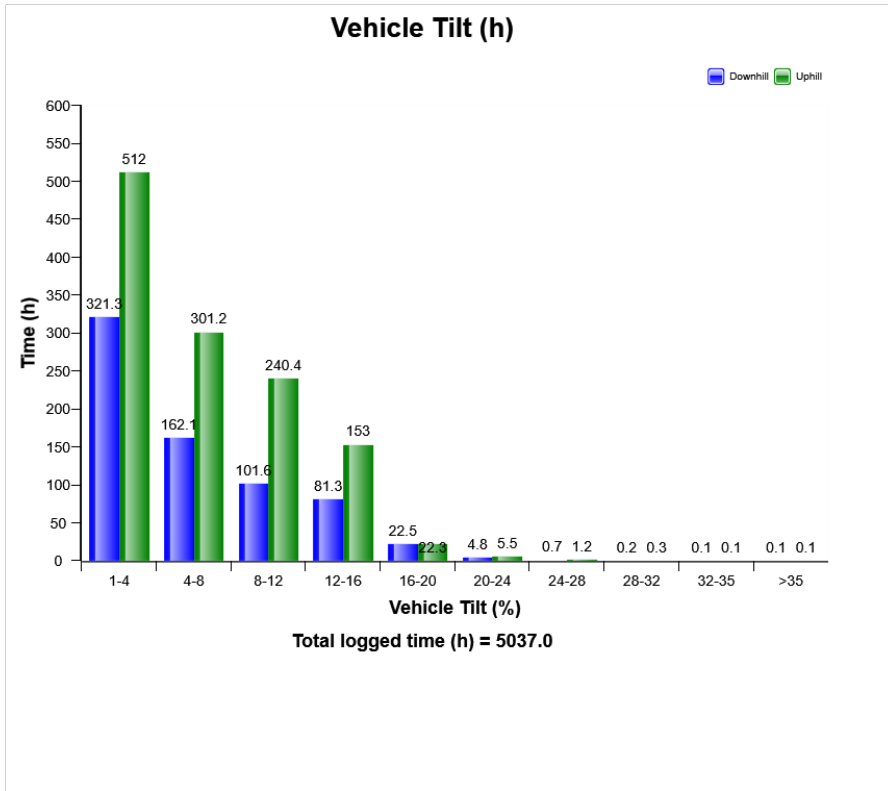
**Accumulated performance**  
**Total logged time (h) =**

<b>Total logged time (h) =</b>	4885.4
<b>Fuel consumption (US-gallons)</b>	22474
<b>Production (ton,US)</b>	521432
<b>Ton/h</b>	106.7
<b>Ton/gal</b>	23.2
<b>Fuel efficiency (US Gal/ton)</b>	0.04
<b>Number of cycles</b>	13772
<b>Cycles overloaded (%)</b>	5
<b>Load utilisation / cycle (%)</b>	88

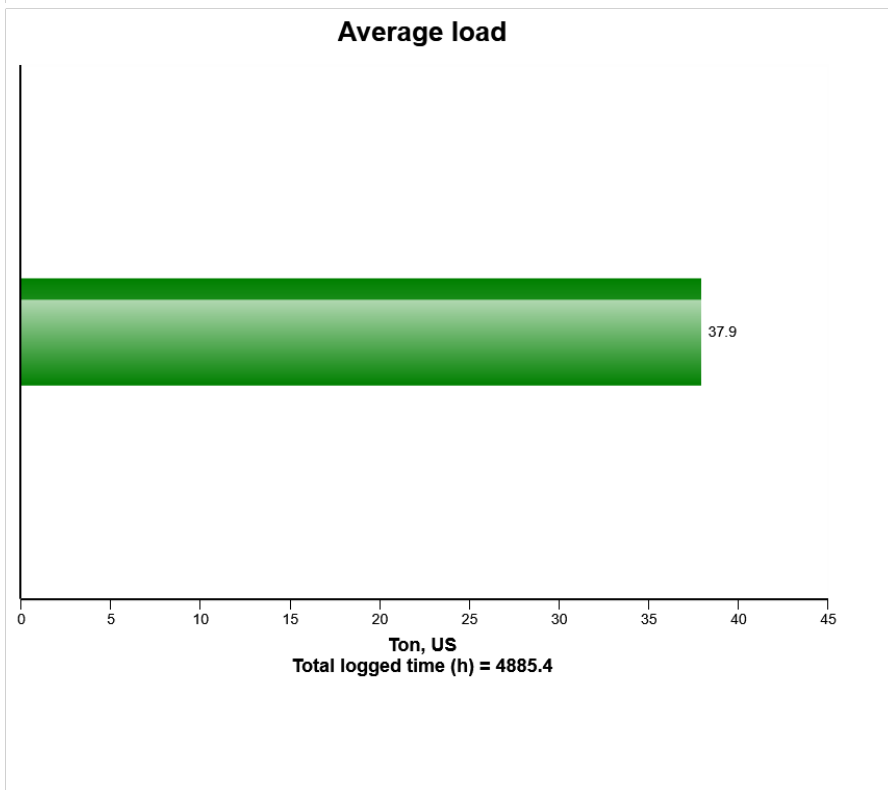
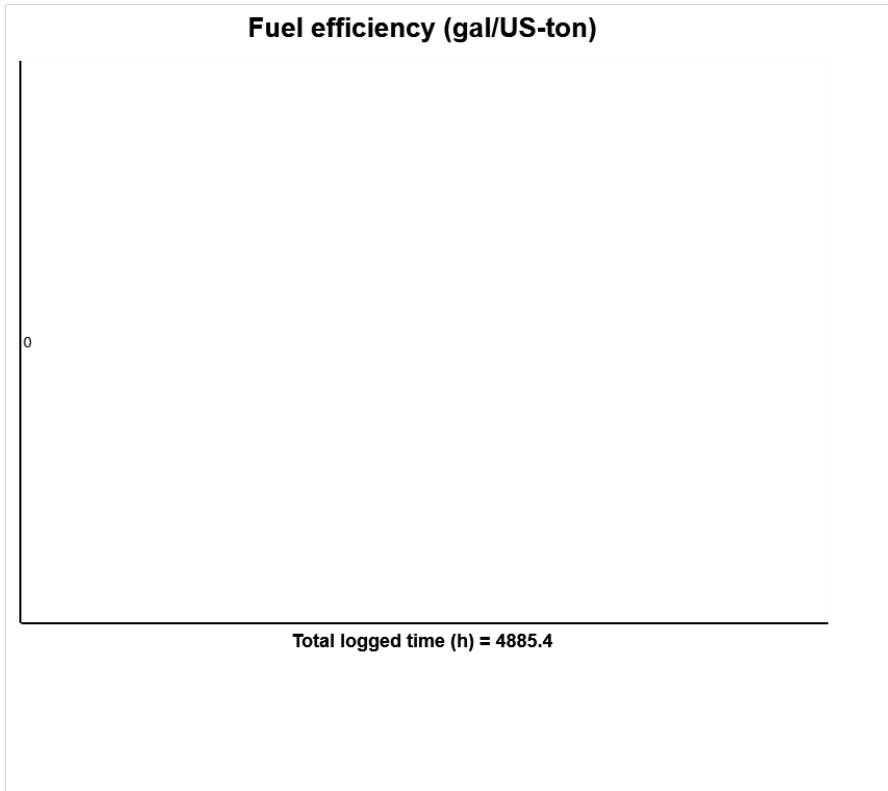




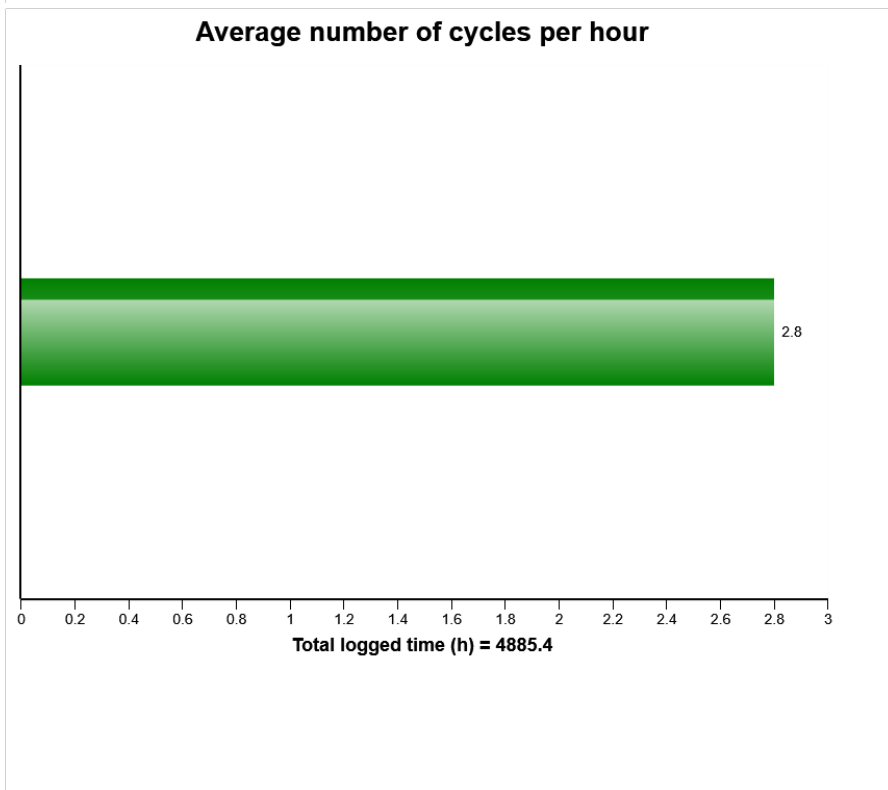
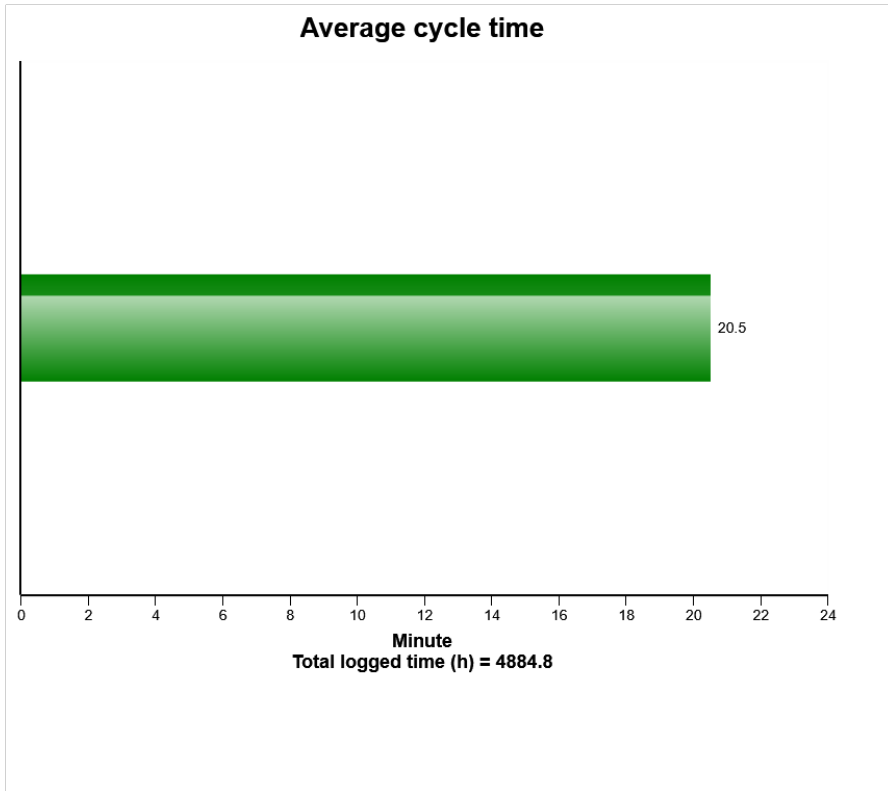
Machine model	SerialNo	Operating Hours	Reading Date
A40G	342113	5036.4	17/07/2019



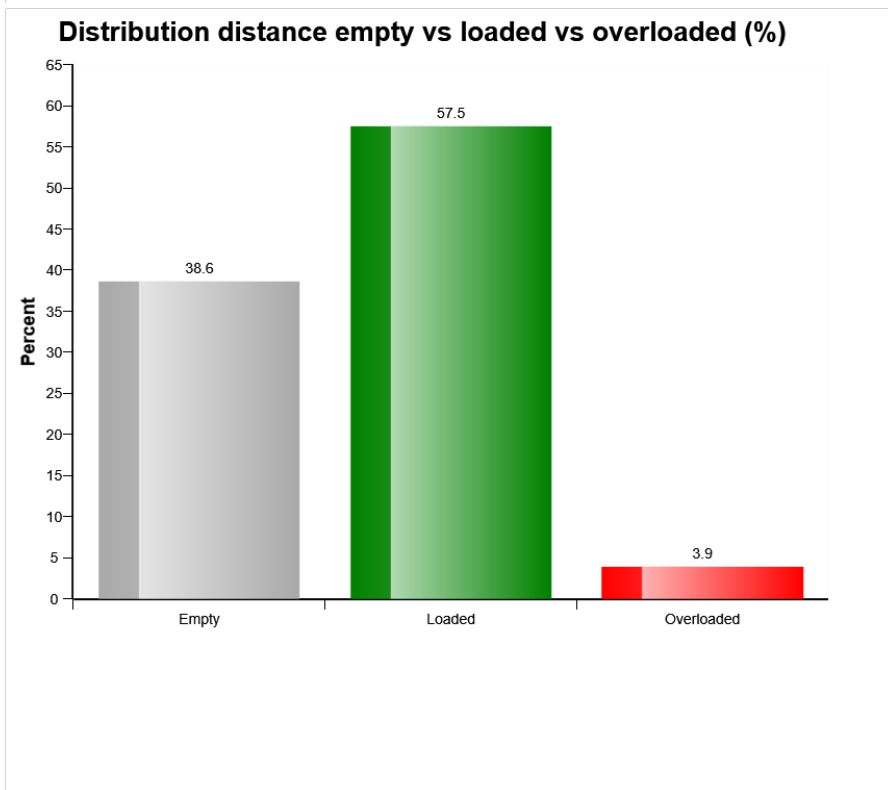
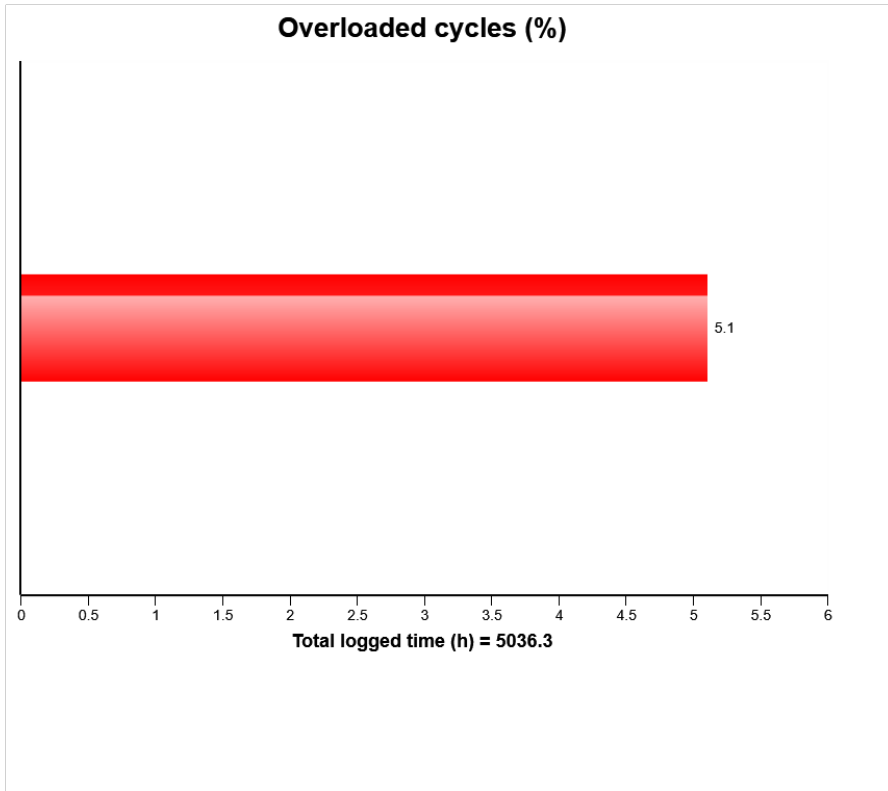
Machine model	SerialNo	Operating Hours	Reading Date
A40G	342113	5036.4	17/07/2019



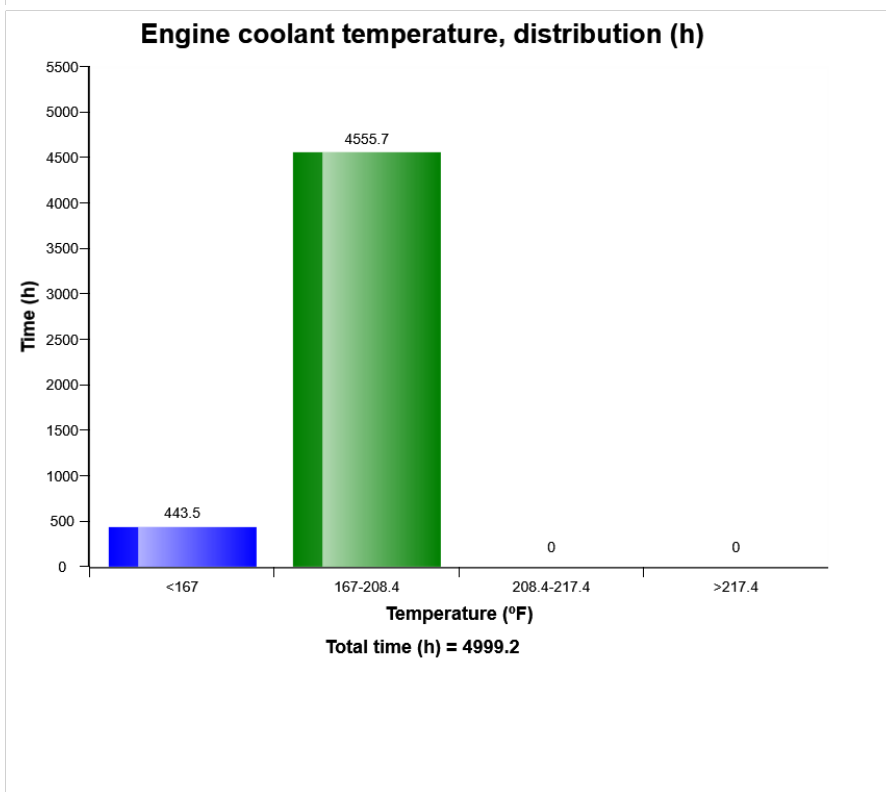
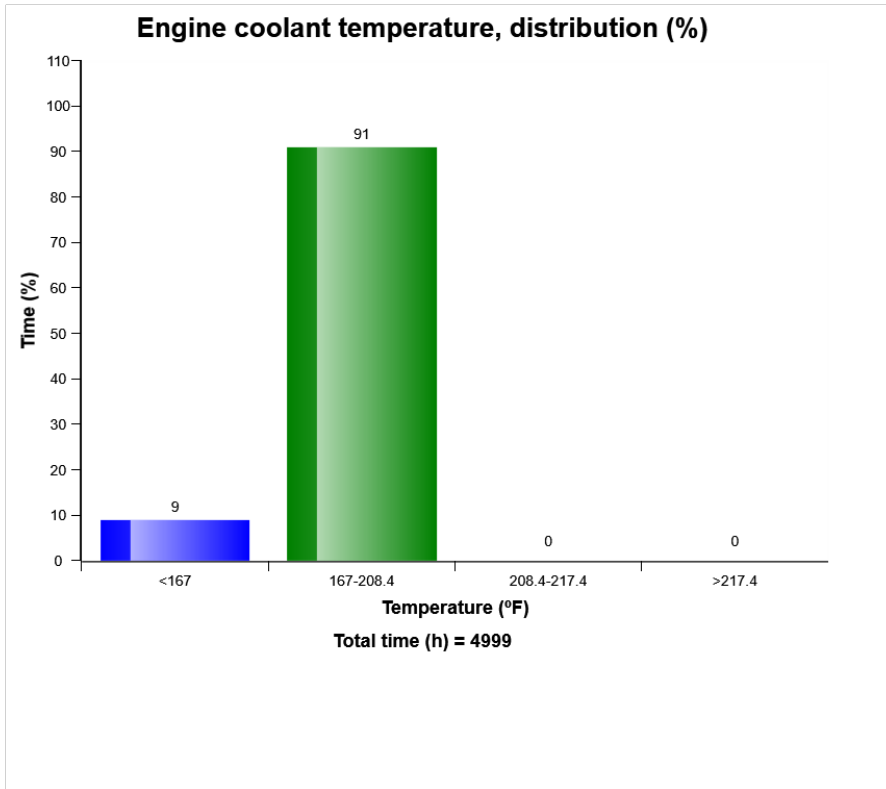
Machine model	SerialNo	Operating Hours	Reading Date
A40G	342113	5036.4	17/07/2019



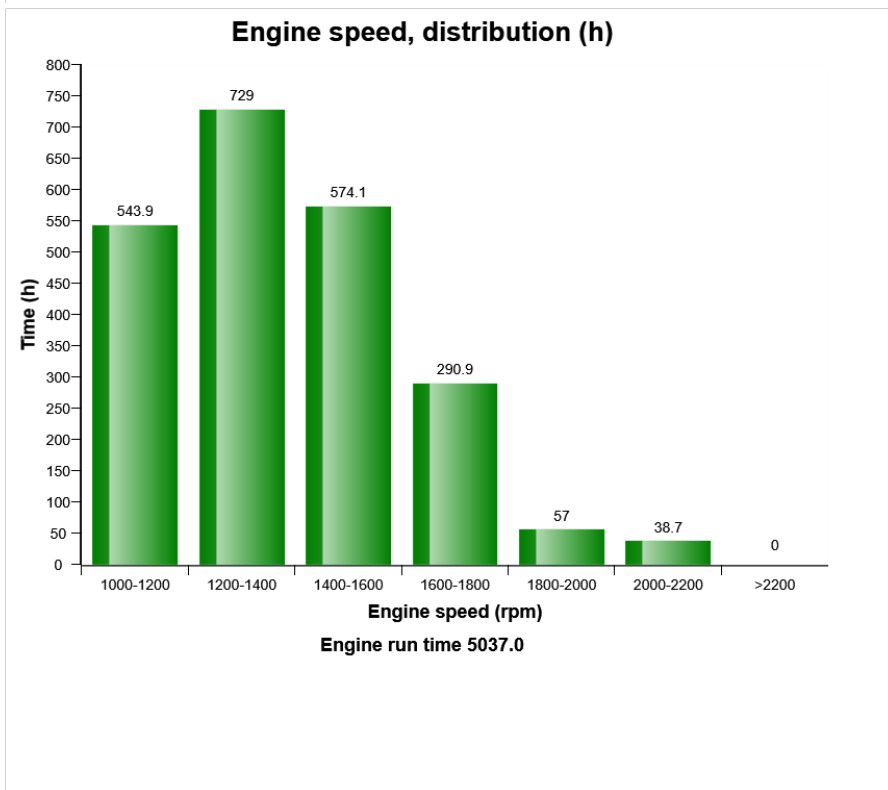
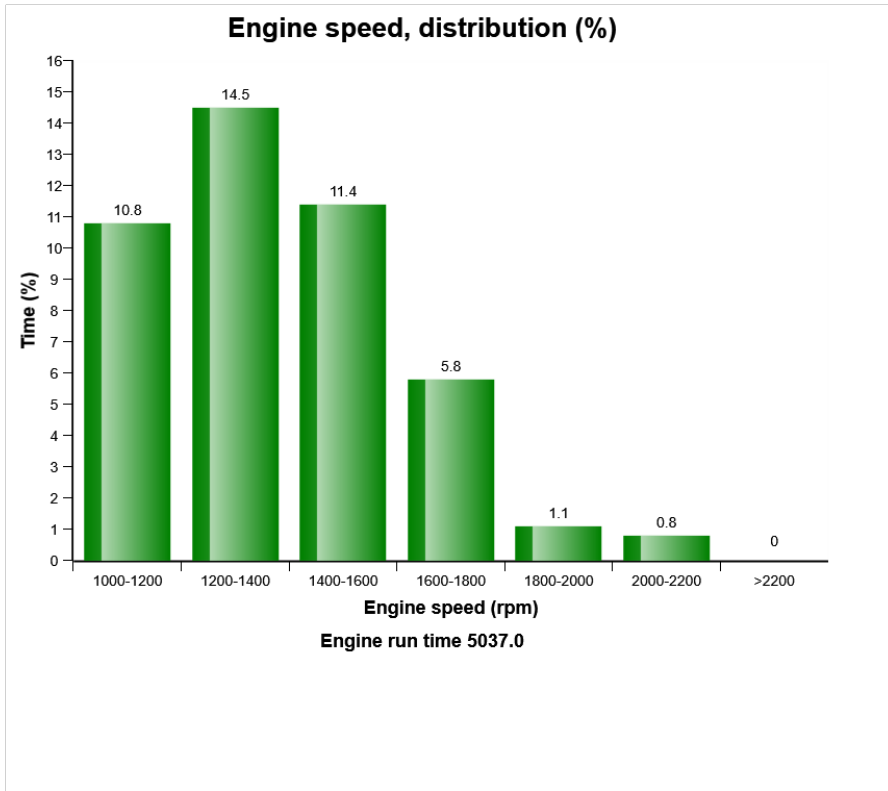
Machine model	SerialNo	Operating Hours	Reading Date
A40G	342113	5036.4	17/07/2019



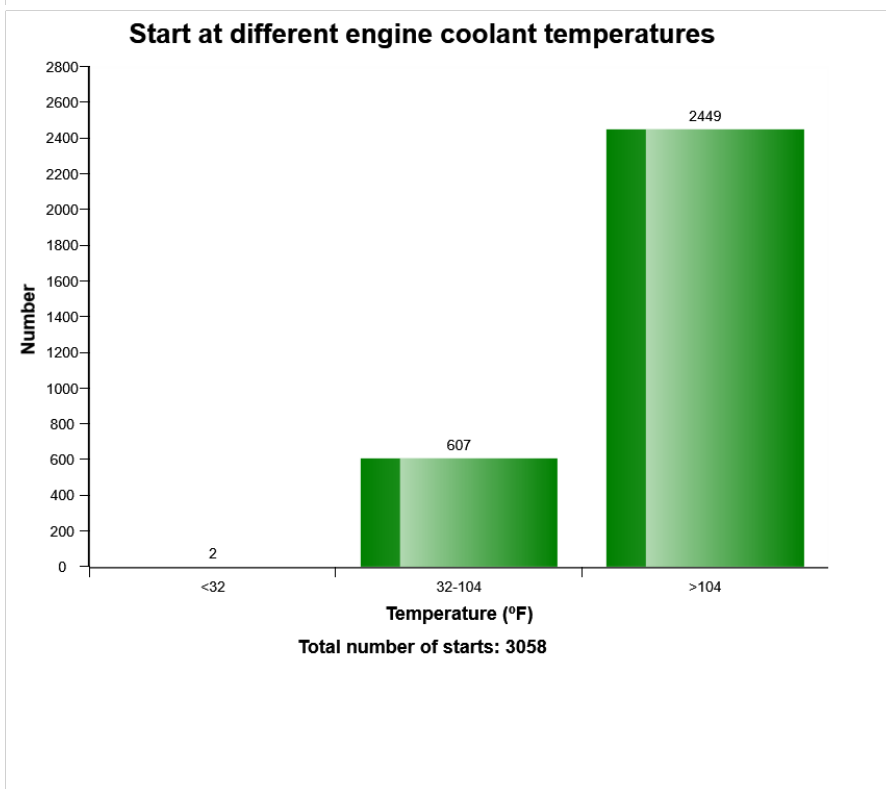
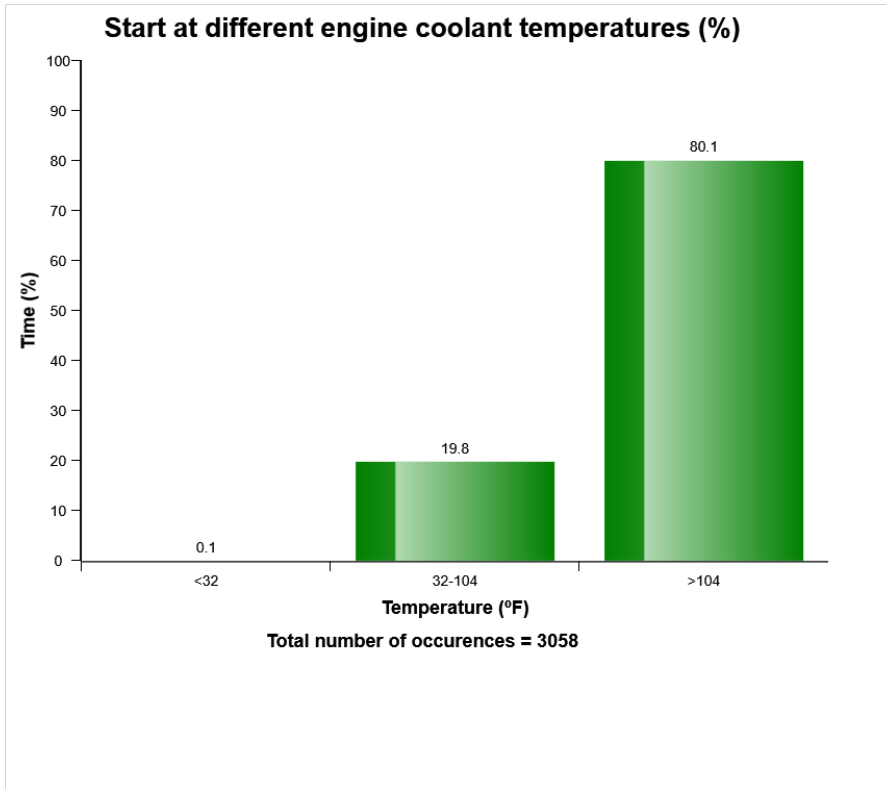
Machine model	SerialNo	Operating Hours	Reading Date
A40G	342113	5036.4	17/07/2019



Machine model	SerialNo	Operating Hours	Reading Date
A40G	342113	5036.4	17/07/2019



Machine model	SerialNo	Operating Hours	Reading Date
A40G	342113	5036.4	17/07/2019



Machine model	SerialNo	Operating Hours	Reading Date
A40G	342113	5036.4	17/07/2019

**High engine coolant temperature  
Total number of occurrences = 0**

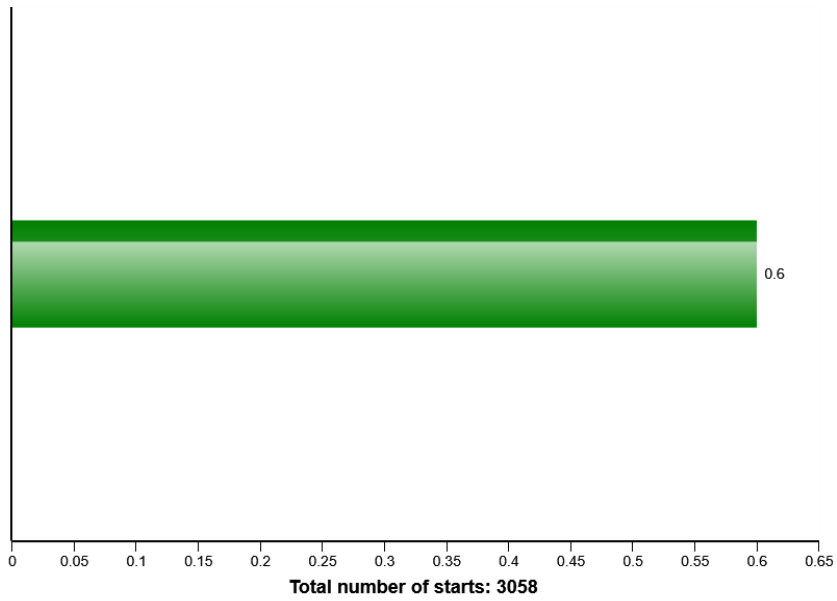
	Op hours	Year	Month	Day	Hour	Minute	Duration (sec)	Extreme (° F)
<b>A</b>	0	2000	0	0	0	0	0	32
<b>B</b>	0	2000	0	0	0	0	0	32
<b>C</b>	0	2000	0	0	0	0	0	32
<b>D</b>	0	2000	0	0	0	0	0	32
<b>E</b>	0	2000	0	0	0	0	0	32
<b>F</b>	0	2000	0	0	0	0	0	32
<b>G</b>	0	2000	0	0	0	0	0	32
<b>H</b>	0	2000	0	0	0	0	0	32
<b>I</b>	0	2000	0	0	0	0	0	32
<b>J</b>	0	2000	0	0	0	0	0	32



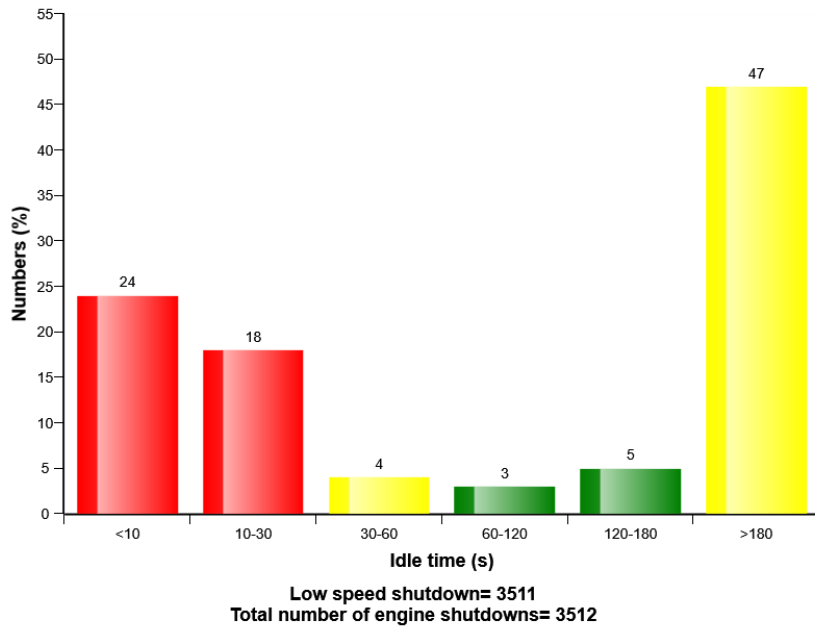


Machine model	SerialNo	Operating Hours	Reading Date
A40G	342113	5036.4	17/07/2019

### Average number of starts per hour



### Idle time before shut down (%)



Machine model	SerialNo	Operating Hours	Reading Date
A40G	342113	5036.4	17/07/2019

**High engine oil temperature**  
**Total number of occurrences = 0**

	Op hours	Year	Month	Day	Hour	Minute	Duration (sec)	Extreme (° F)
<b>A</b>	0	2000	0	0	0	0	0	32
<b>B</b>	0	2000	0	0	0	0	0	32
<b>C</b>	0	2000	0	0	0	0	0	32
<b>D</b>	0	2000	0	0	0	0	0	32
<b>E</b>	0	2000	0	0	0	0	0	32
<b>F</b>	0	2000	0	0	0	0	0	32
<b>G</b>	0	2000	0	0	0	0	0	32
<b>H</b>	0	2000	0	0	0	0	0	32
<b>I</b>	0	2000	0	0	0	0	0	32
<b>J</b>	0	2000	0	0	0	0	0	32



Machine model	SerialNo	Operating Hours	Reading Date
A40G	342113	5036.4	17/07/2019

**Starter overheating  
Total number of occurrences = 0**

Op hours	Year	Month	Day	Hour	Minute
0	2000	0	0	0	0
0	2000	0	0	0	0
0	2000	0	0	0	0
0	2000	0	0	0	0
0	2000	0	0	0	0
0	2000	0	0	0	0
0	2000	0	0	0	0
0	2000	0	0	0	0
0	2000	0	0	0	0
0	2000	0	0	0	0
0	2000	0	0	0	0
0	2000	0	0	0	0
0	2000	0	0	0	0
0	2000	0	0	0	0
0	2000	0	0	0	0
0	2000	0	0	0	0
0	2000	0	0	0	0
0	2000	0	0	0	0
0	2000	0	0	0	0
0	2000	0	0	0	0
0	2000	0	0	0	0
0	2000	0	0	0	0



Machine model A40G	SerialNo 342113	Operating Hours 5036.4	Reading Date 17/07/2019
-----------------------	--------------------	---------------------------	----------------------------

**Low Air filter pressure**  
**Total number of occurrences = 0**

Op hours	Year	Month	Day	Hour	Minute	Duration (sec)
0	2000	0	0	0	0	0
0	2000	0	0	0	0	0
0	2000	0	0	0	0	0
0	2000	0	0	0	0	0
0	2000	0	0	0	0	0
0	2000	0	0	0	0	0
0	2000	0	0	0	0	0
0	2000	0	0	0	0	0
0	2000	0	0	0	0	0
0	2000	0	0	0	0	0
0	2000	0	0	0	0	0
0	2000	0	0	0	0	0
0	2000	0	0	0	0	0
0	2000	0	0	0	0	0
0	2000	0	0	0	0	0
0	2000	0	0	0	0	0
0	2000	0	0	0	0	0
0	2000	0	0	0	0	0
0	2000	0	0	0	0	0
0	2000	0	0	0	0	0
0	2000	0	0	0	0	0
0	2000	0	0	0	0	0



Machine model	SerialNo	Operating Hours	Reading Date
A40G	342113	5036.4	17/07/2019

**Regeneration ignored**  
**Total number of ignored regenerations 0**

Op hours	Year	Month	Day	Hour	Minute	Duration (min)
* 0	2000	0	0	0	0	0
* 0	2000	0	0	0	0	0
* 0	2000	0	0	0	0	0
* 0	2000	0	0	0	0	0
* 0	2000	0	0	0	0	0
* 0	2000	0	0	0	0	0
* 0	2000	0	0	0	0	0
* 0	2000	0	0	0	0	0
* 0	2000	0	0	0	0	0
* 0	2000	0	0	0	0	0
* 0	2000	0	0	0	0	0
* 0	2000	0	0	0	0	0
* 0	2000	0	0	0	0	0
* 0	2000	0	0	0	0	0
* 0	2000	0	0	0	0	0
* 0	2000	0	0	0	0	0
* 0	2000	0	0	0	0	0
* 0	2000	0	0	0	0	0
* 0	2000	0	0	0	0	0
* 0	2000	0	0	0	0	0
* 0	2000	0	0	0	0	0



Machine model	SerialNo	Operating Hours	Reading Date
A40G	342113	5036.4	17/07/2019

**Regeneration aborted**  
**Total number of occurrences = 6**

Op hours	Year	Month	Day	Hour	Minute	Reason
0	2000	0	0	0	0	0
0	2000	0	0	0	0	0
0	2000	0	0	0	0	0
0	2000	0	0	0	0	0
0	2000	0	0	0	0	0
0	2000	0	0	0	0	0
0	2000	0	0	0	0	0
0	2000	0	0	0	0	0
0	2000	0	0	0	0	0
0	2000	0	0	0	0	0
0	2000	0	0	0	0	0
0	2000	0	0	0	0	0
0	2000	0	0	0	0	0
0	2000	0	0	0	0	0
0	2000	0	0	0	0	0
0	2000	0	0	0	0	0
499	2017	8	23	9	11	2
499	2017	8	23	8	27	1
1000	2017	10	25	11	48	1
4101	2018	12	31	8	9	1
4101	2018	12	31	8	3	1
4607	2019	4	2	10	57	2



Machine model	SerialNo	Operating Hours	Reading Date
A40G	342113	5036.4	17/07/2019

**Regeneration duration**  
**Total number of occurrences = 13**

Op hours	Year	Month	Day	Hour	Minute	Duration (min)
0	2000	0	0	0	0	0
0	2000	0	0	0	0	0
0	2000	0	0	0	0	0
0	2000	0	0	0	0	0
0	2000	0	0	0	0	0
0	2000	0	0	0	0	0
0	2000	0	0	0	0	0
498	2017	8	23	8	18	8
499	2017	8	23	8	36	36
1000	2017	10	25	12	30	43
1000	2017	10	25	11	44	4
1502	2017	12	28	7	14	43
2003	2018	3	6	16	46	40
2504	2018	5	10	6	21	41
3005	2018	7	18	15	5	40
3505	2018	9	20	9	23	43
4101	2018	12	31	8	3	6
4101	2018	12	31	7	53	9
4102	2019	1	11	6	22	40
4606	2019	4	2	10	16	40



Machine model	SerialNo	Operating Hours	Reading Date
A40G	342113	5036.4	17/07/2019

**Water level warning in water separator**  
**Total number of occurrences = 0**

Op hours	Year	Month	Day	Hour	Minute	Duration (min)
0	2000	0	0	0	0	0
0	2000	0	0	0	0	0
0	2000	0	0	0	0	0
0	2000	0	0	0	0	0
0	2000	0	0	0	0	0
0	2000	0	0	0	0	0
0	2000	0	0	0	0	0
0	2000	0	0	0	0	0
0	2000	0	0	0	0	0
0	2000	0	0	0	0	0
0	2000	0	0	0	0	0
0	2000	0	0	0	0	0
0	2000	0	0	0	0	0
0	2000	0	0	0	0	0
0	2000	0	0	0	0	0
0	2000	0	0	0	0	0
0	2000	0	0	0	0	0
0	2000	0	0	0	0	0
0	2000	0	0	0	0	0
0	2000	0	0	0	0	0
0	2000	0	0	0	0	0
0	2000	0	0	0	0	0
0	2000	0	0	0	0	0
0	2000	0	0	0	0	0





Machine model	SerialNo	Operating Hours	Reading Date
A40G	342113	5036.4	17/07/2019

**High voltage**  
**Total number of occurrences = 3**

Op hours	Year	Month	Day	Hour	Minute	Duration (sec)	Extreme value
5001	2019	7	18	10	55	0	27.7
4756	2019	4	22	8	34	1	32.7
3786	2018	11	19	6	38	28	31.4
0	2000	0	0	0	0	0	0.0
0	2000	0	0	0	0	0	0.0
0	2000	0	0	0	0	0	0.0
0	2000	0	0	0	0	0	0.0
0	2000	0	0	0	0	0	0.0
0	2000	0	0	0	0	0	0.0
0	2000	0	0	0	0	0	0.0
0	2000	0	0	0	0	0	0.0
0	2000	0	0	0	0	0	0.0
0	2000	0	0	0	0	0	0.0
0	2000	0	0	0	0	0	0.0
0	2000	0	0	0	0	0	0.0
0	2000	0	0	0	0	0	0.0
0	2000	0	0	0	0	0	0.0
0	2000	0	0	0	0	0	0.0
0	2000	0	0	0	0	0	0.0
0	2000	0	0	0	0	0	0.0
0	2000	0	0	0	0	0	0.0
0	2000	0	0	0	0	0	0.0



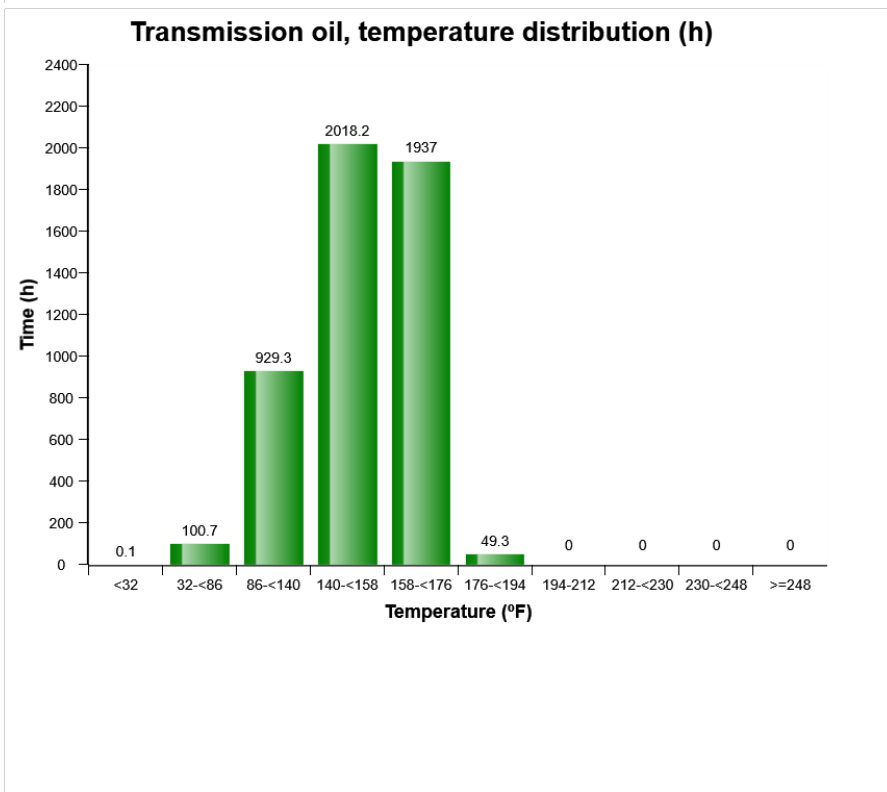
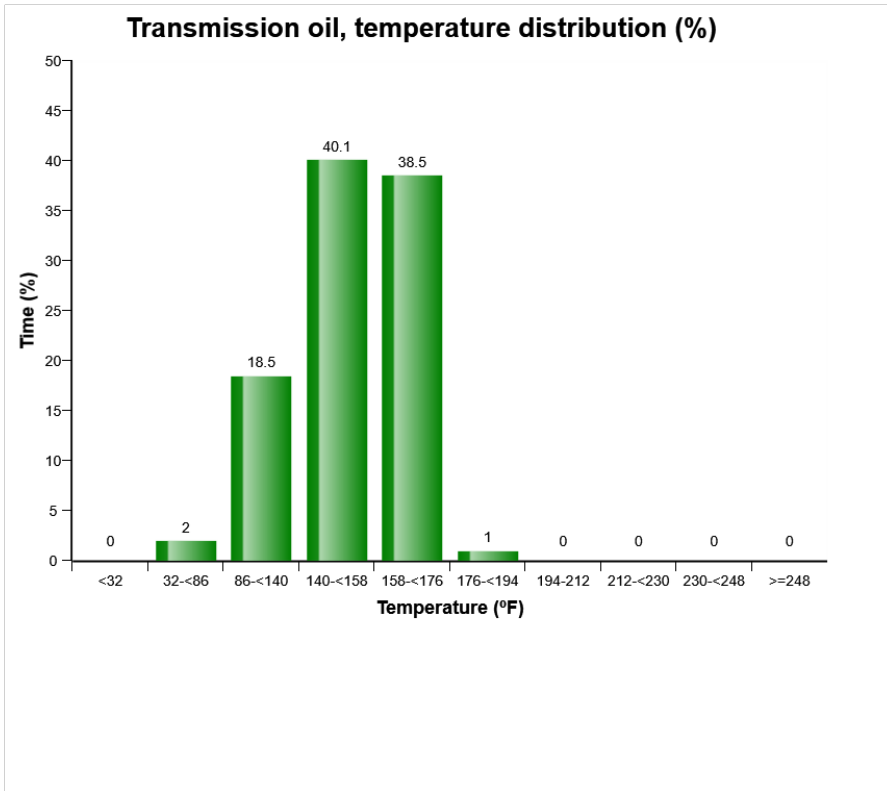
Machine model	SerialNo	Operating Hours	Reading Date
A40G	342113	5036.4	17/07/2019

**Low voltage**  
**Total number of occurrences = 1**

Op hours	Year	Month	Day	Hour	Minute	Duration (sec)	Extreme value
2888	2018	7	3	6	8	0	25.9
0	2000	0	0	0	0	0	0.0
0	2000	0	0	0	0	0	0.0
0	2000	0	0	0	0	0	0.0
0	2000	0	0	0	0	0	0.0
0	2000	0	0	0	0	0	0.0
0	2000	0	0	0	0	0	0.0
0	2000	0	0	0	0	0	0.0
0	2000	0	0	0	0	0	0.0
0	2000	0	0	0	0	0	0.0
0	2000	0	0	0	0	0	0.0
0	2000	0	0	0	0	0	0.0
0	2000	0	0	0	0	0	0.0
0	2000	0	0	0	0	0	0.0
0	2000	0	0	0	0	0	0.0
0	2000	0	0	0	0	0	0.0
0	2000	0	0	0	0	0	0.0
0	2000	0	0	0	0	0	0.0
0	2000	0	0	0	0	0	0.0
0	2000	0	0	0	0	0	0.0

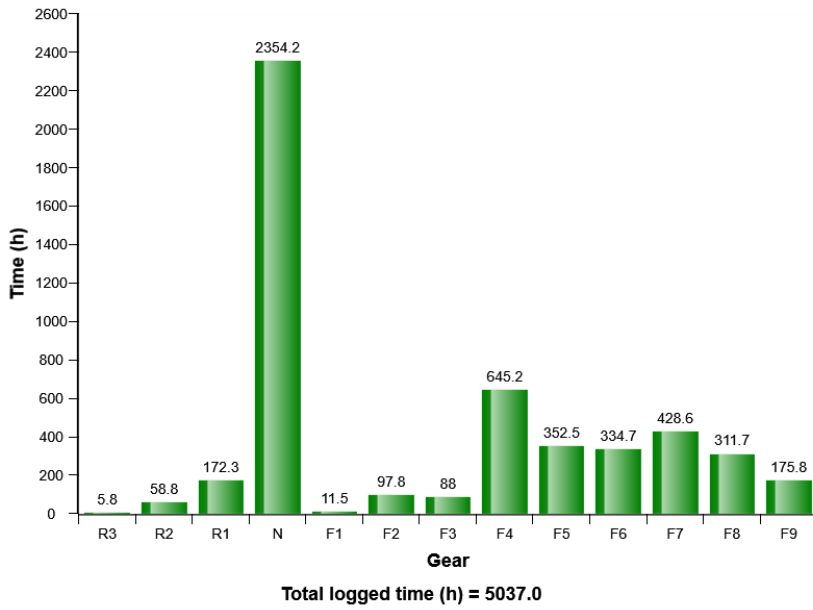


Machine model	SerialNo	Operating Hours	Reading Date
A40G	342113	5036.4	17/07/2019

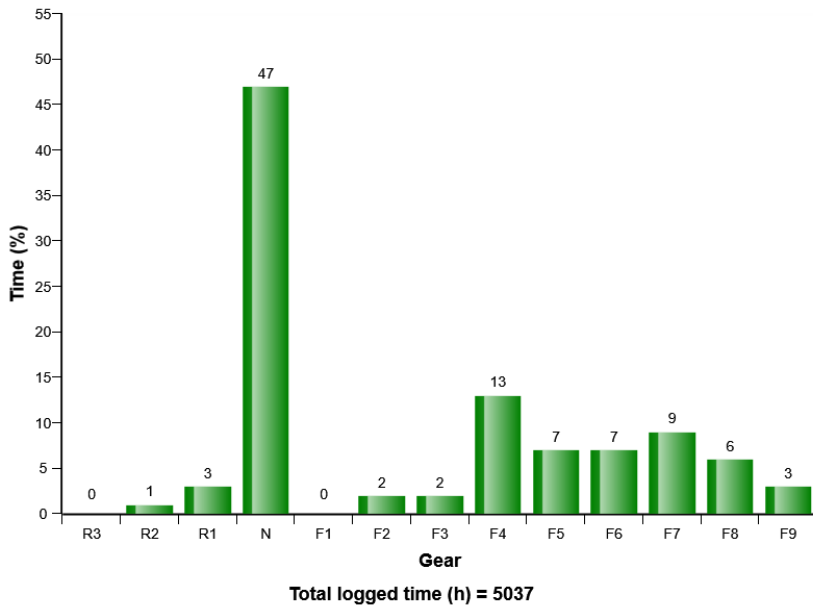


Machine model	SerialNo	Operating Hours	Reading Date
A40G	342113	5036.4	17/07/2019

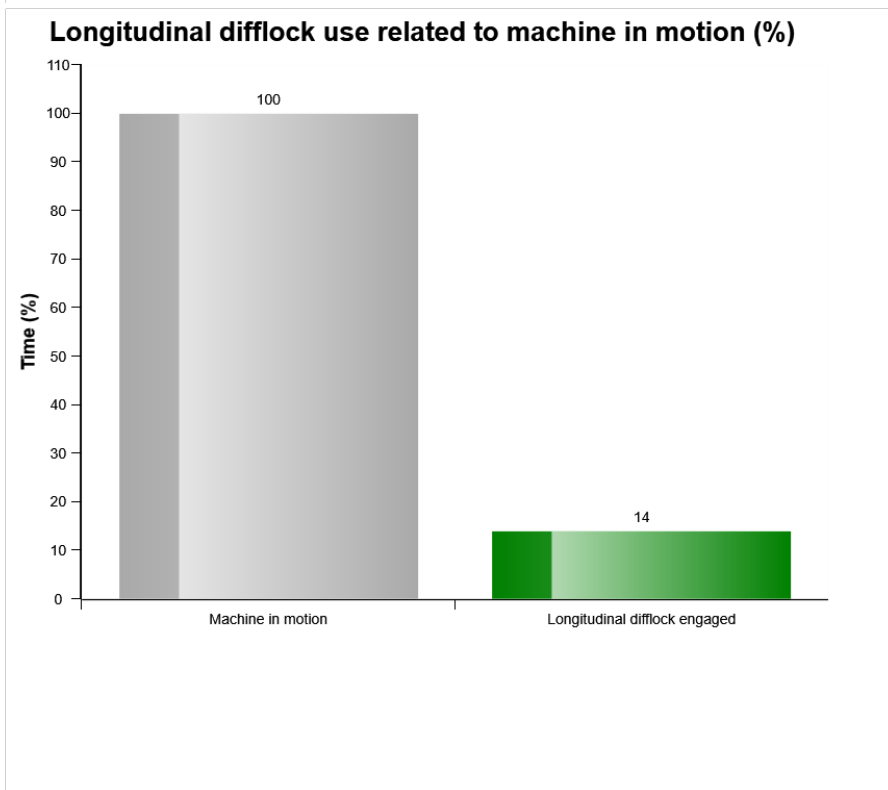
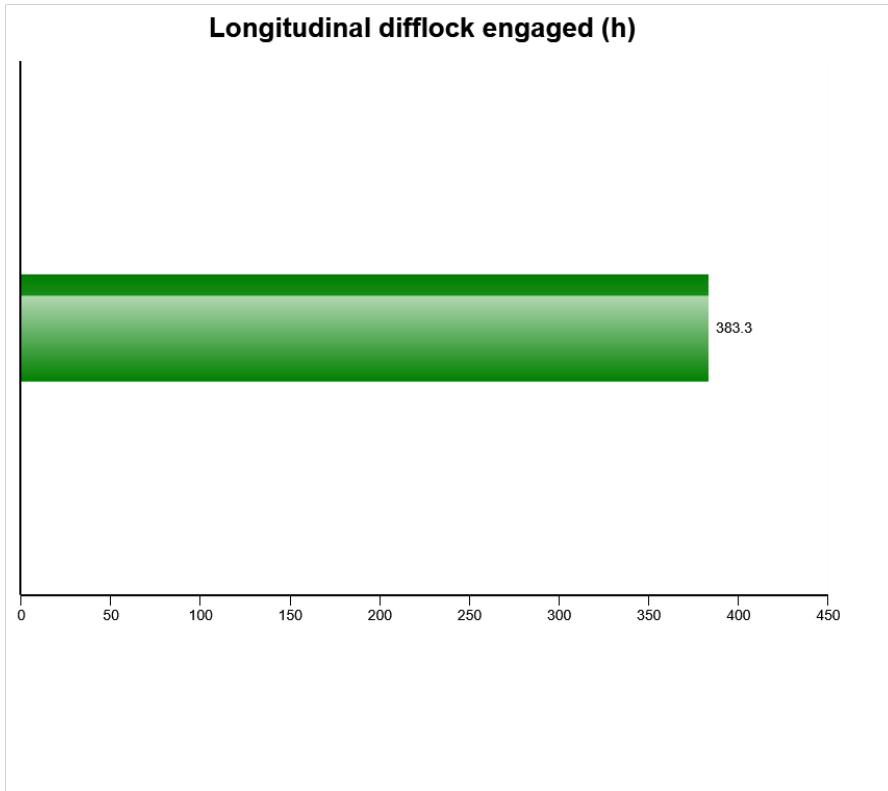
**Gears, time distribution (h)**



**Gears, time distribution (%)**



Machine model	SerialNo	Operating Hours	Reading Date
A40G	342113	5036.4	17/07/2019



Machine model	SerialNo	Operating Hours	Reading Date
A40G	342113	5036.4	17/07/2019

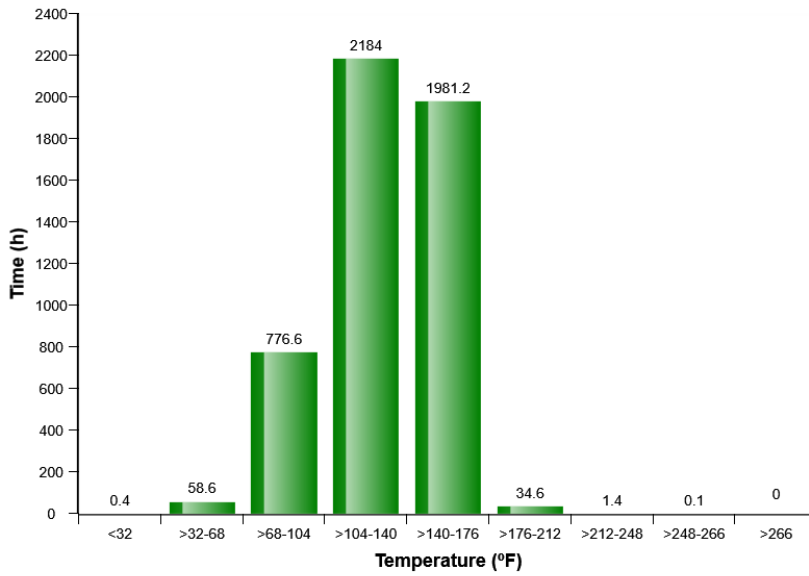
**Transmission oil pressure low  
Total number of occurrences = 0**

Op hours	Year	Month	Day	Hour	Minute	Duration (sec)	Extreme (psi)
0	2000	0	0	0	0	0	0
0	2000	0	0	0	0	0	0
0	2000	0	0	0	0	0	0
0	2000	0	0	0	0	0	0
0	2000	0	0	0	0	0	0
0	2000	0	0	0	0	0	0
0	2000	0	0	0	0	0	0
0	2000	0	0	0	0	0	0
0	2000	0	0	0	0	0	0
0	2000	0	0	0	0	0	0
0	2000	0	0	0	0	0	0
0	2000	0	0	0	0	0	0
0	2000	0	0	0	0	0	0
0	2000	0	0	0	0	0	0
0	2000	0	0	0	0	0	0
0	2000	0	0	0	0	0	0
0	2000	0	0	0	0	0	0
0	2000	0	0	0	0	0	0
0	2000	0	0	0	0	0	0
0	2000	0	0	0	0	0	0
0	2000	0	0	0	0	0	0

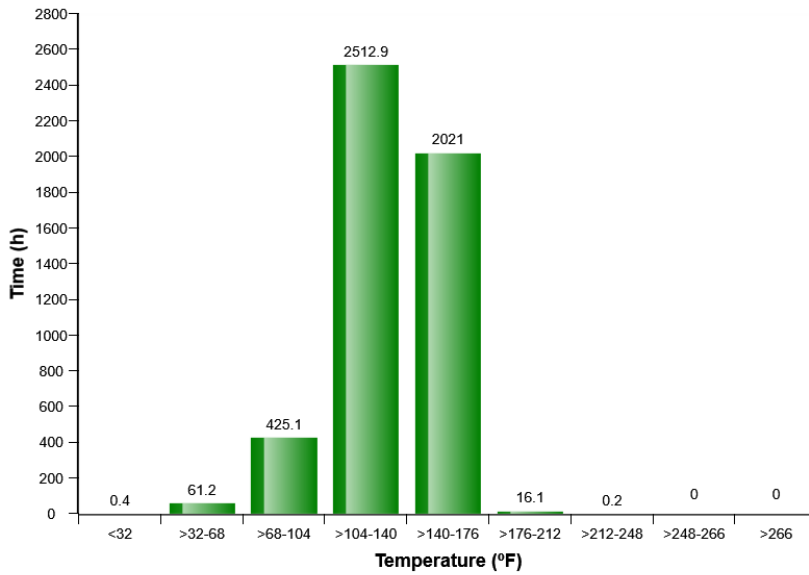


Machine model	SerialNo	Operating Hours	Reading Date
A40G	342113	5036.4	17/07/2019

### Service brake cooling oil, front axle temperature

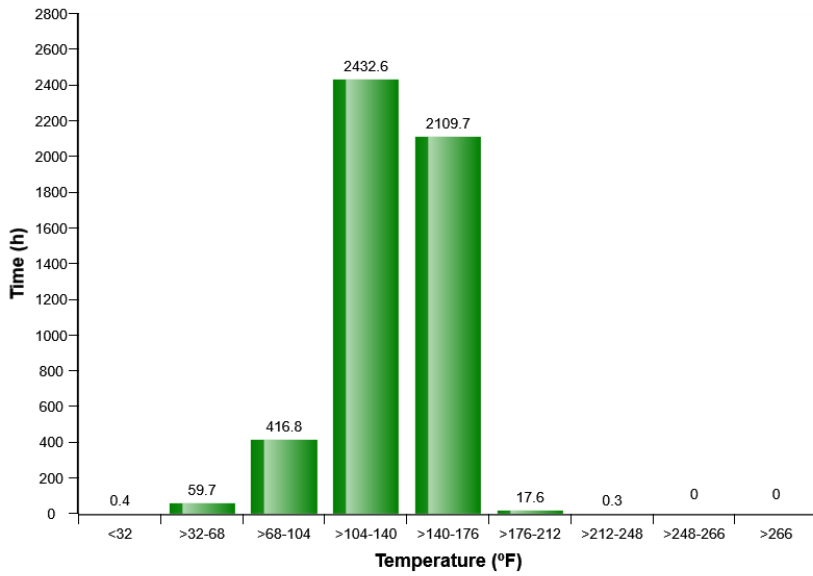


### Service brake cooling oil, first bogie axle temperature

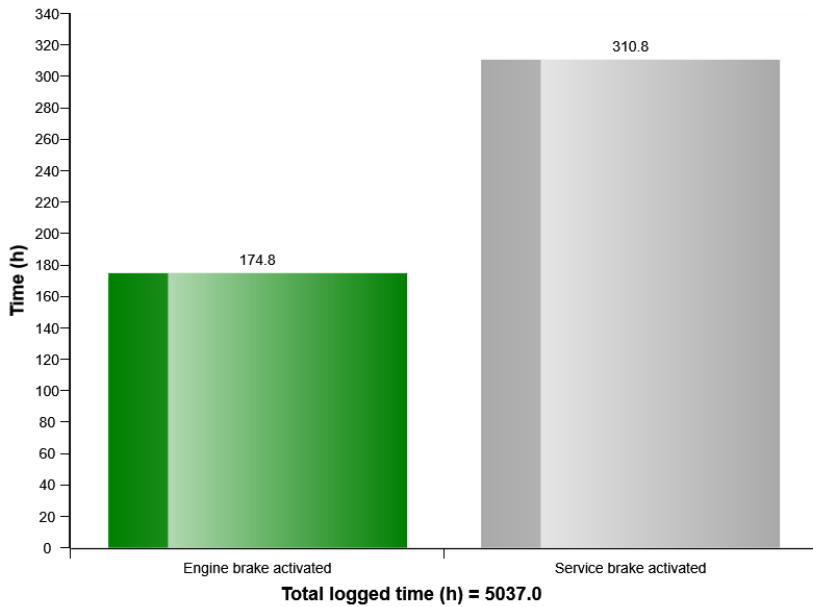


Machine model	SerialNo	Operating Hours	Reading Date
A40G	342113	5036.4	17/07/2019

### Service brake cooling oil, second bogie axle temperature



### Brake Usage (h)





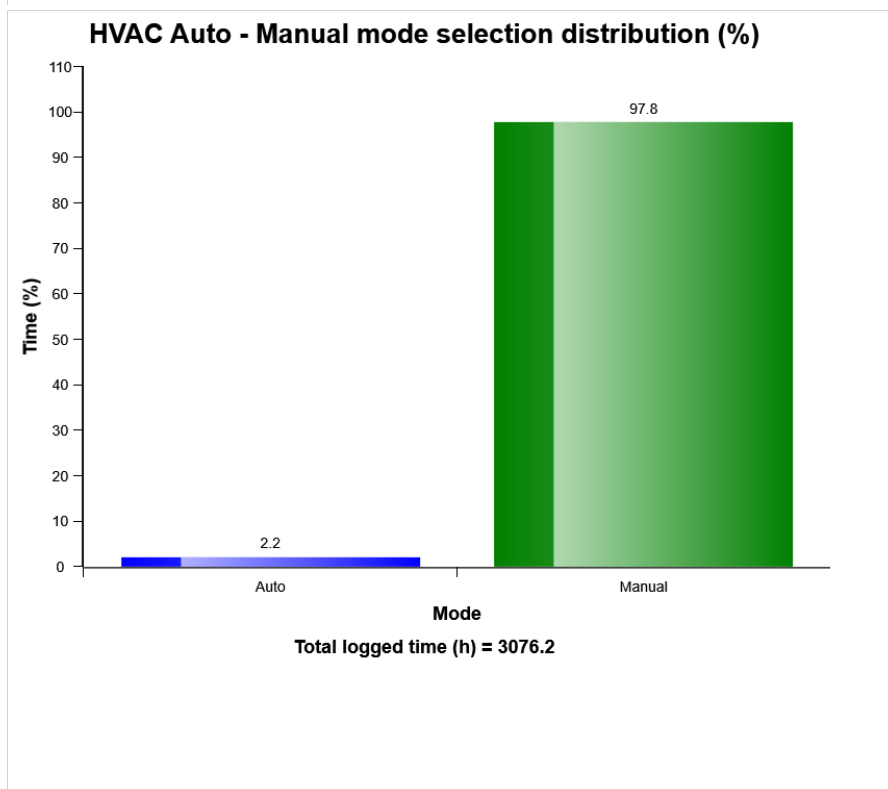
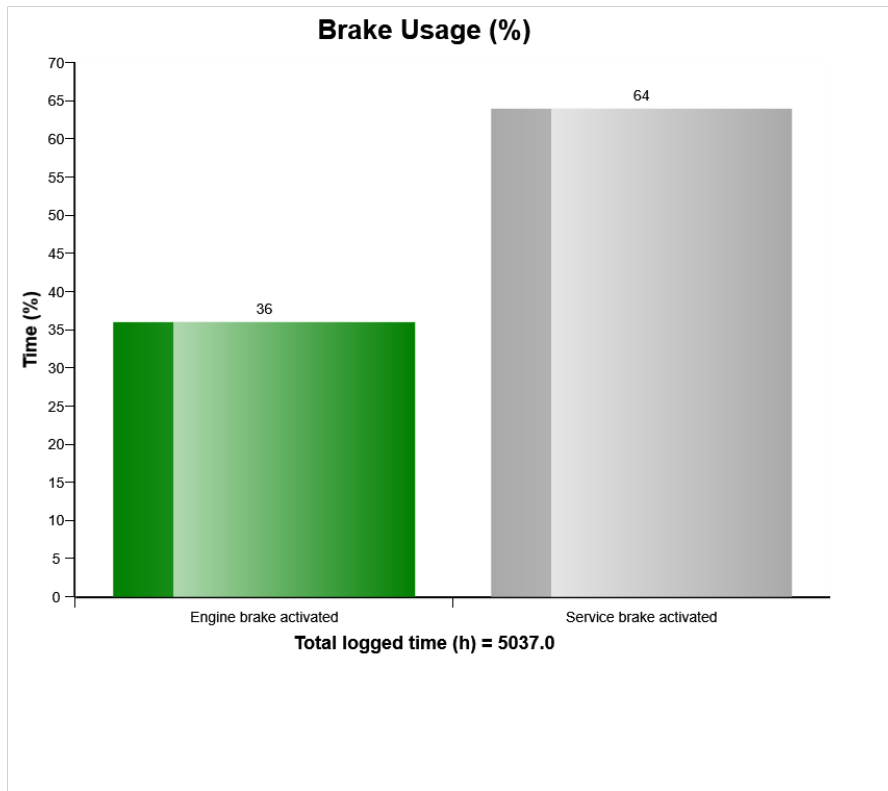
Machine model	SerialNo	Operating Hours	Reading Date
A40G	342113	5036.4	17/07/2019

**Low Brake Servo Pressure**  
**Total number of occurrences = 1**

	Op hours	Year	Month	Day	Hour	Minute	Duration (sec)	Extreme (psi)
<b>B</b>	0	2000	0	0	0	0	0	0
<b>C</b>	0	2000	0	0	0	0	0	0
<b>D</b>	0	2000	0	0	0	0	0	0
<b>E</b>	0	2000	0	0	0	0	0	0
<b>F</b>	0	2000	0	0	0	0	0	0
<b>G</b>	0	2000	0	0	0	0	0	0
<b>H</b>	0	2000	0	0	0	0	0	0
<b>I</b>	0	2000	0	0	0	0	0	0
<b>J</b>	0	2000	0	0	0	0	0	0
<b>A</b>	10	2017	6	30	5	51	10	2064

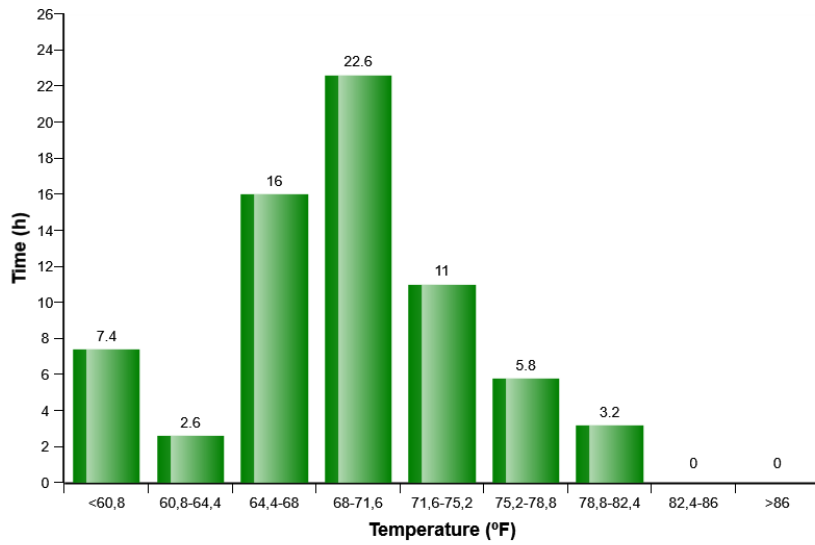


Machine model	SerialNo	Operating Hours	Reading Date
A40G	342113	5036.4	17/07/2019

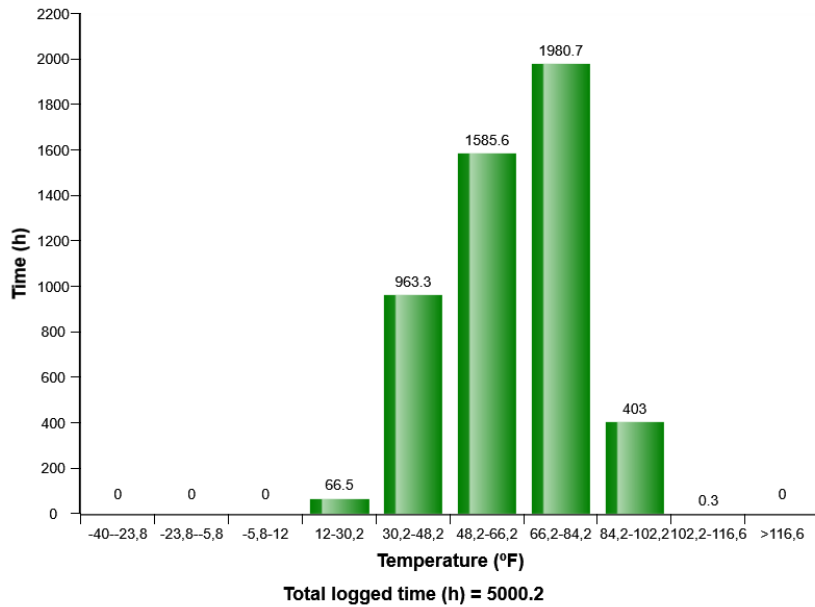


Machine model	SerialNo	Operating Hours	Reading Date
A40G	342113	5036.4	17/07/2019

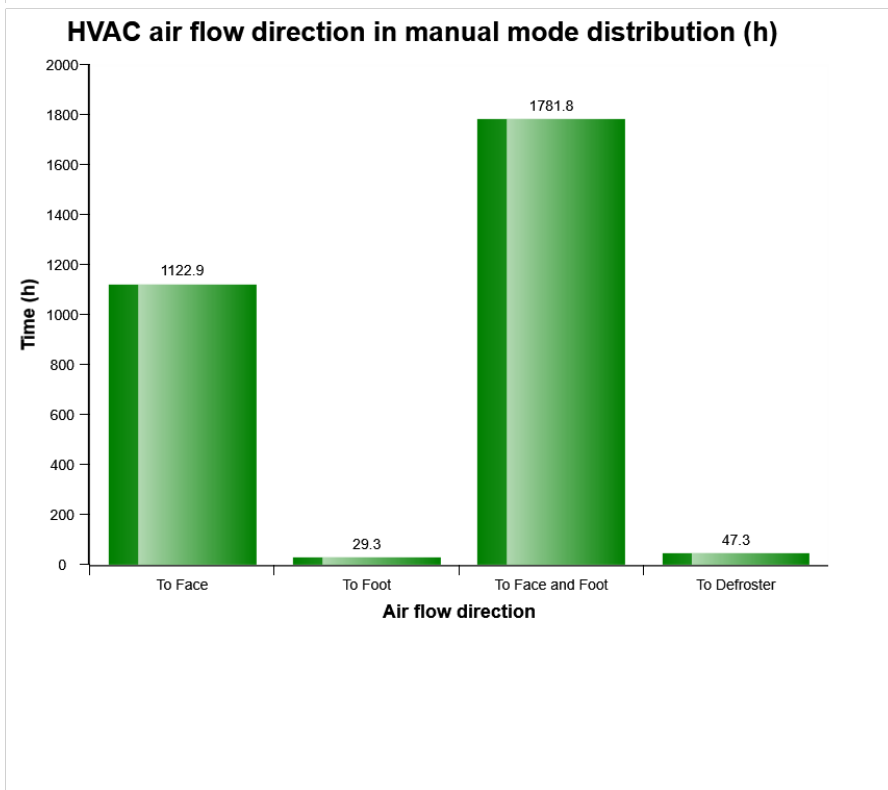
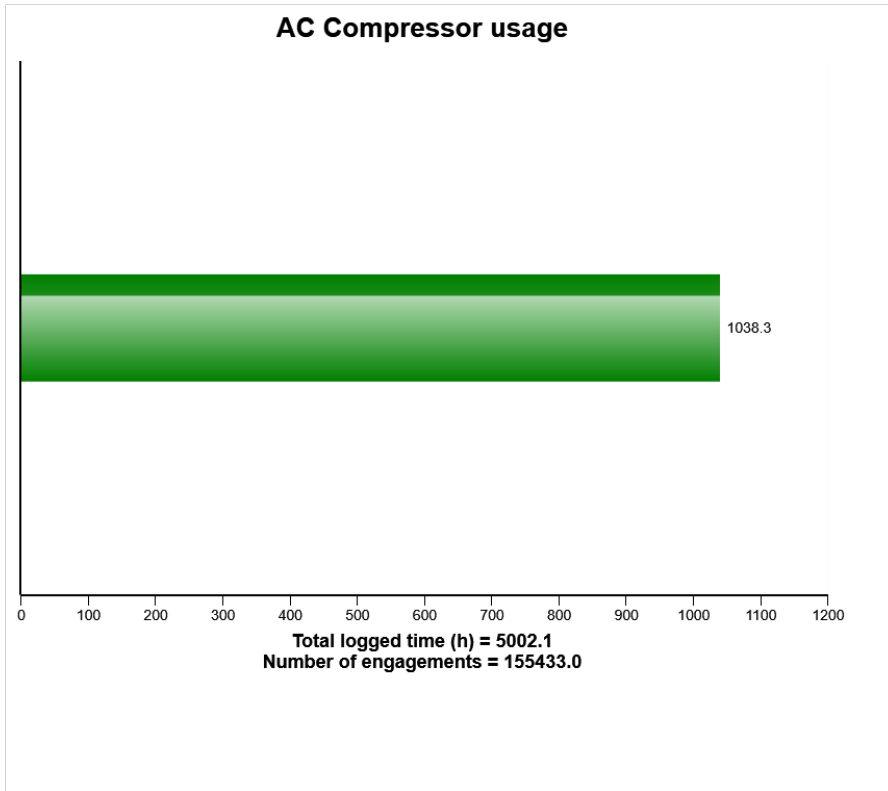
### HVAC air temperature setting in auto control mode distribution (h)



### Machine ambient temperature distribution (h)



Machine model	SerialNo	Operating Hours	Reading Date
A40G	342113	5036.4	17/07/2019



Machine model	SerialNo	Operating Hours	Reading Date
A40G	342113	5036.4	17/07/2019

**AC High Pressure**  
**Total number of occurrences = 10**

Op hours	Year	Month	Day	Hours	Minute	Duration (sec)	Extreme (° F)
0	2000	0	0	0	0	0	32
0	2000	0	0	0	0	0	32
0	2000	0	0	0	0	0	32
0	2000	0	0	0	0	0	32
0	2000	0	0	0	0	0	32
0	2000	0	0	0	0	0	32
0	2000	0	0	0	0	0	32
0	2000	0	0	0	0	0	32
0	2000	0	0	0	0	0	32
0	2000	0	0	0	0	0	32
0	2000	0	0	0	0	0	32
469	2017	8	18	17	32	7	93
507	2017	8	23	14	33	11	95
792	2017	9	29	17	14	189	102
2815	2018	6	20	14	50	12	97
2816	2018	6	20	16	20	9	97
2816	2018	6	20	16	11	10	99
3017	2018	7	17	17	11	6	91
3284	2018	8	21	15	7	74	86
3284	2018	8	21	15	26	39	86
3482	2018	9	14	17	3	26	95





Machine model	SerialNo	Operating Hours	Reading Date
A40G	342113	5036.4	17/07/2019

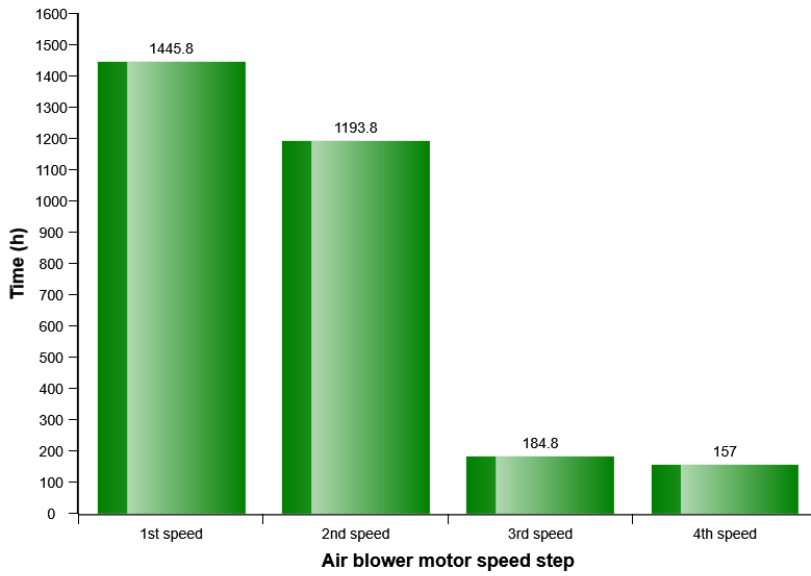
**AC System Cut Out Pressure**  
**Total number of occurrences = 3**

Op hours	Year	Month	Day	Hour	Minute	Duration (sec)	Extreme (° F)
0	2000	0	0	0	0	0	32
0	2000	0	0	0	0	0	32
0	2000	0	0	0	0	0	32
0	2000	0	0	0	0	0	32
0	2000	0	0	0	0	0	32
0	2000	0	0	0	0	0	32
0	2000	0	0	0	0	0	32
0	2000	0	0	0	0	0	32
0	2000	0	0	0	0	0	32
0	2000	0	0	0	0	0	32
0	2000	0	0	0	0	0	32
0	2000	0	0	0	0	0	32
0	2000	0	0	0	0	0	32
0	2000	0	0	0	0	0	32
0	2000	0	0	0	0	0	32
0	2000	0	0	0	0	0	32
0	2000	0	0	0	0	0	32
0	2000	0	0	0	0	0	32
0	2000	0	0	0	0	0	32
0	2000	0	0	0	0	0	32
0	2000	0	0	0	0	0	32
1521	2001	10	19	16	59	552	14
1554	2001	10	22	17	3	542	18
1653	2001	11	4	20	58	567	19

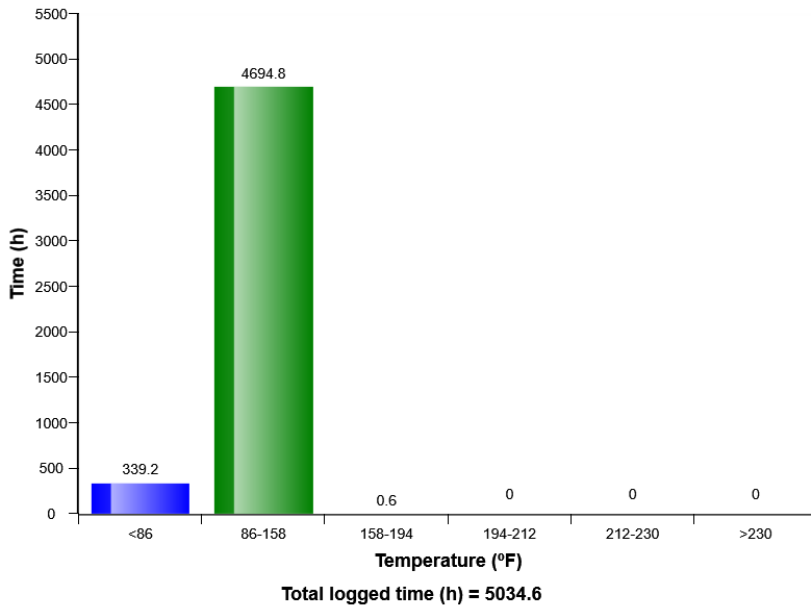


Machine model	SerialNo	Operating Hours	Reading Date
A40G	342113	5036.4	17/07/2019

### HVAC air blower motor speed in manual mode distribution (h)



### Hydraulic oil, temperature distribution (h)





Machine model	SerialNo	Operating Hours	Reading Date
A40G	342113	5036.4	17/07/2019

