

# VOLVO CONSTRUCTION EQUIPMENT MATRIS REPORT

Machine model <b>L90H</b>	SerialNo <b>624234</b>	Operating Hours <b>3345.1</b>	Reading Date <b>30/01/2020</b>
Company name <b>ascendum</b>	Dealer	Report Issuer	
Contact name	Technician <b>Boback</b>	Primary Application <b>Lose VirginBank (e.g. sand,</b>	
Site	Workorder	Ground Condition	

MATRIS Reading, Summary / Recommendation



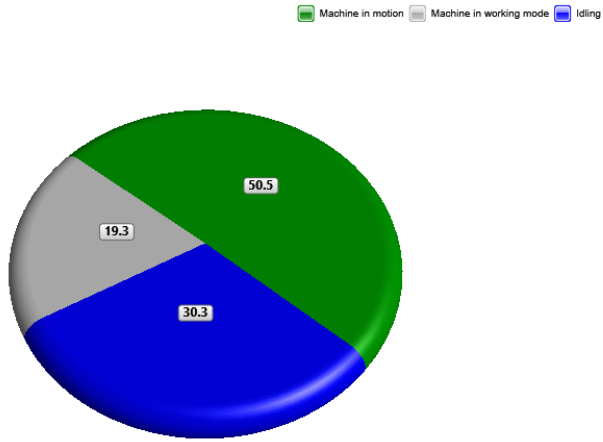
Machine model	SerialNo	Operating Hours	Reading Date
L90H	624234	3345.1	30/01/2020

Main equipment	Type	Equipment
	Tyre size/class	
	Main Attachment	
	Extra Counterweight	
	Ballast	
	Chains	
	Boom Suspension System	
	Attachment Interface	
	Volume m3 (yd3) / Area m2 (ft2)	
	Attachment make	



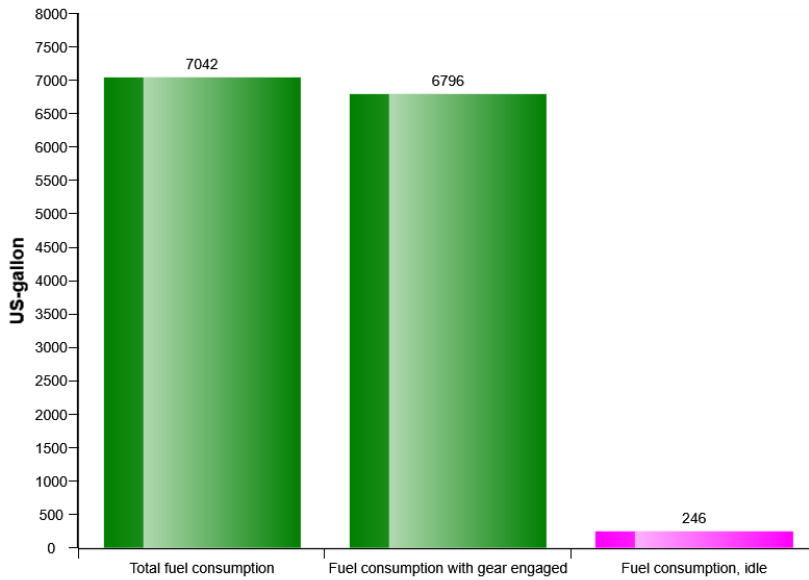
Machine model	SerialNo	Operating Hours	Reading Date
L90H	624234	3345.1	30/01/2020

### Machine utilization (%)



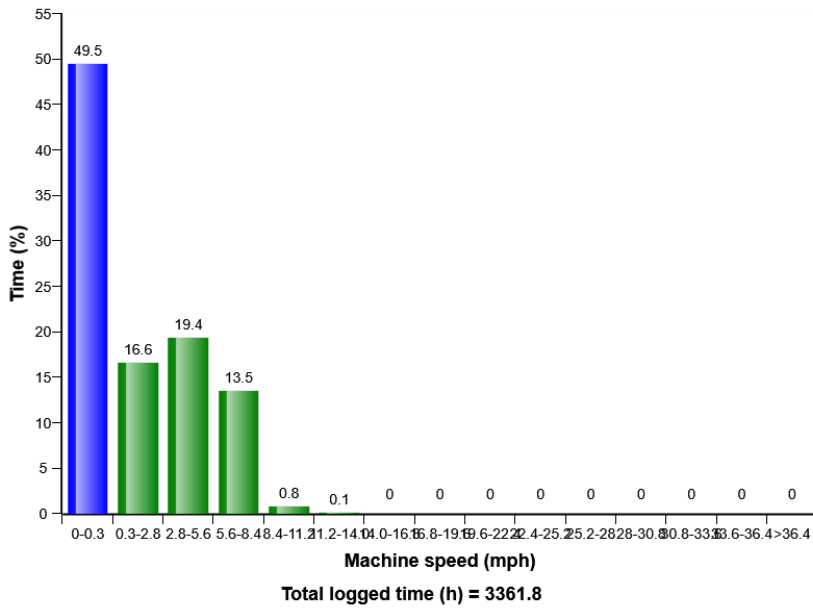
Total time (h) = 3361.8

### Fuel consumption

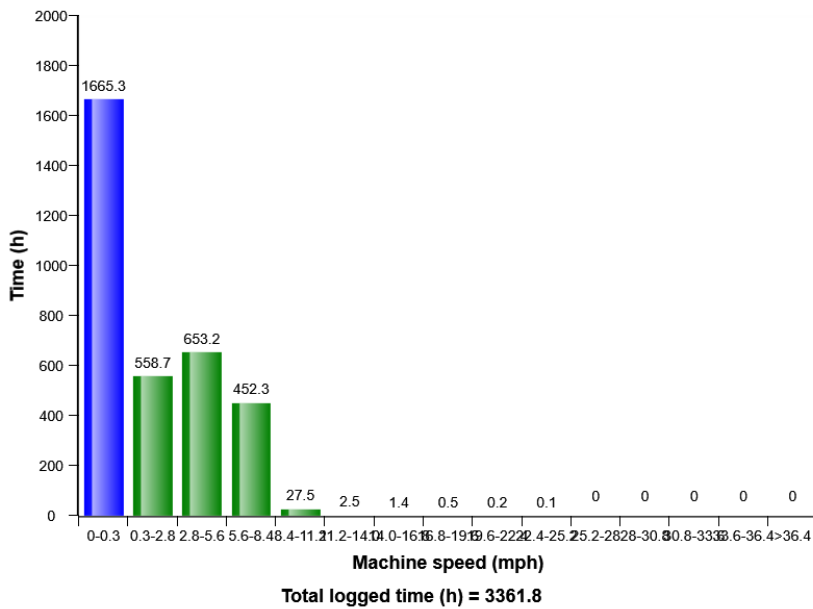


Machine model	SerialNo	Operating Hours	Reading Date
L90H	624234	3345.1	30/01/2020

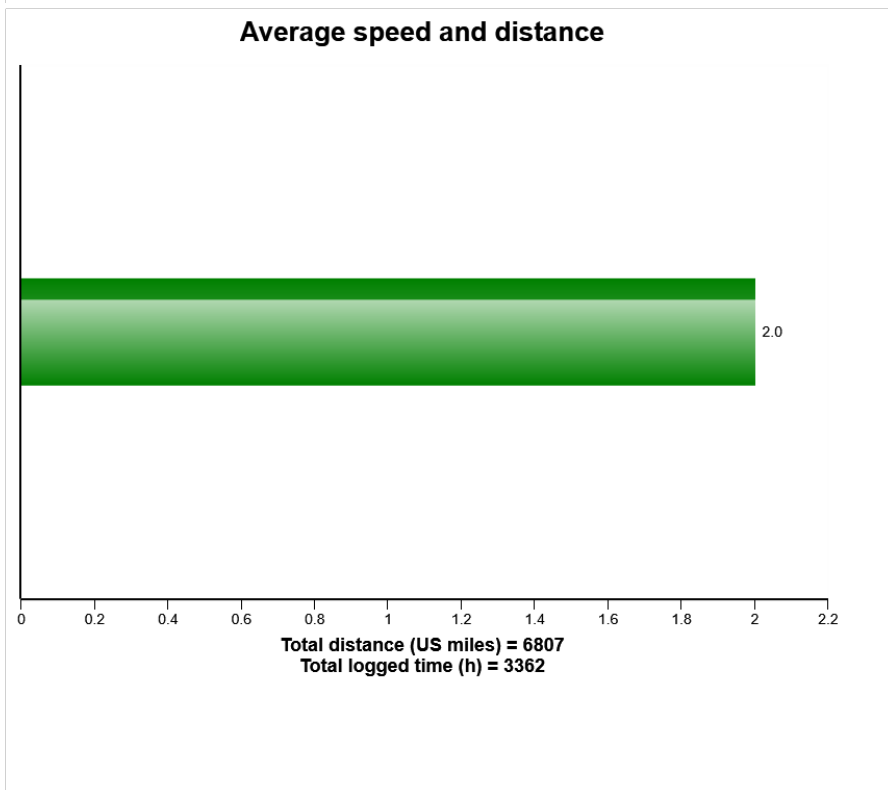
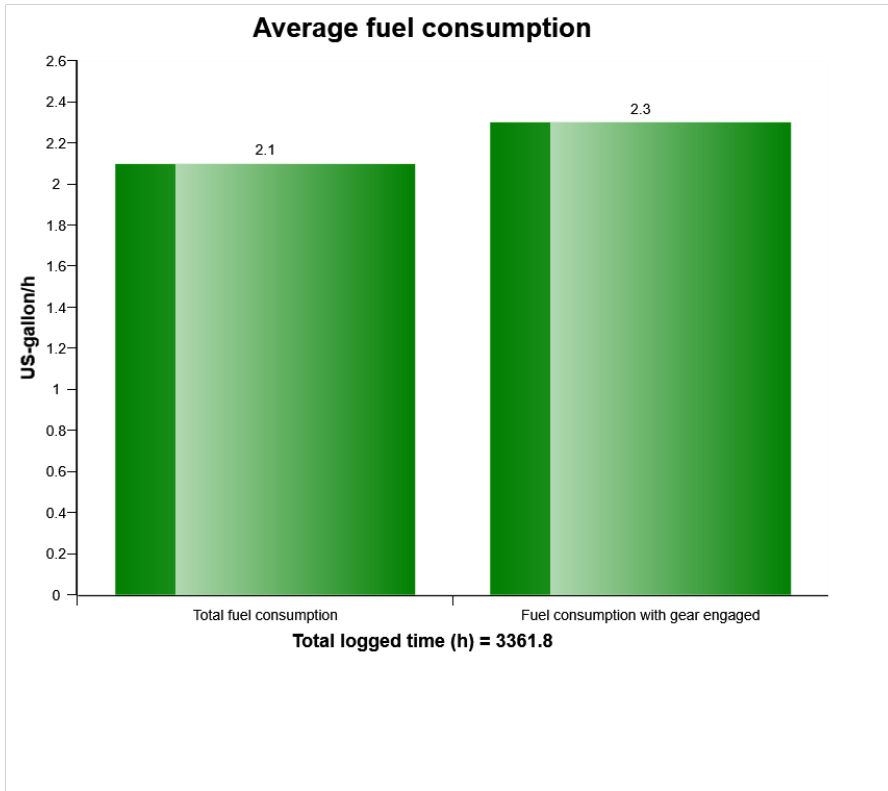
**Machine speed, distribution (%)**



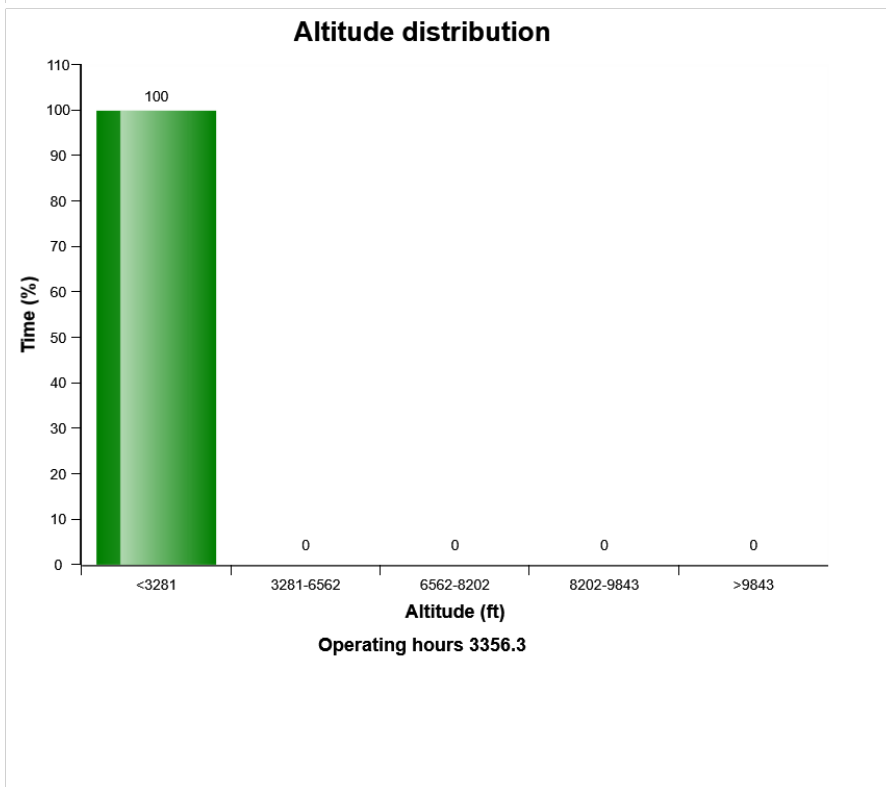
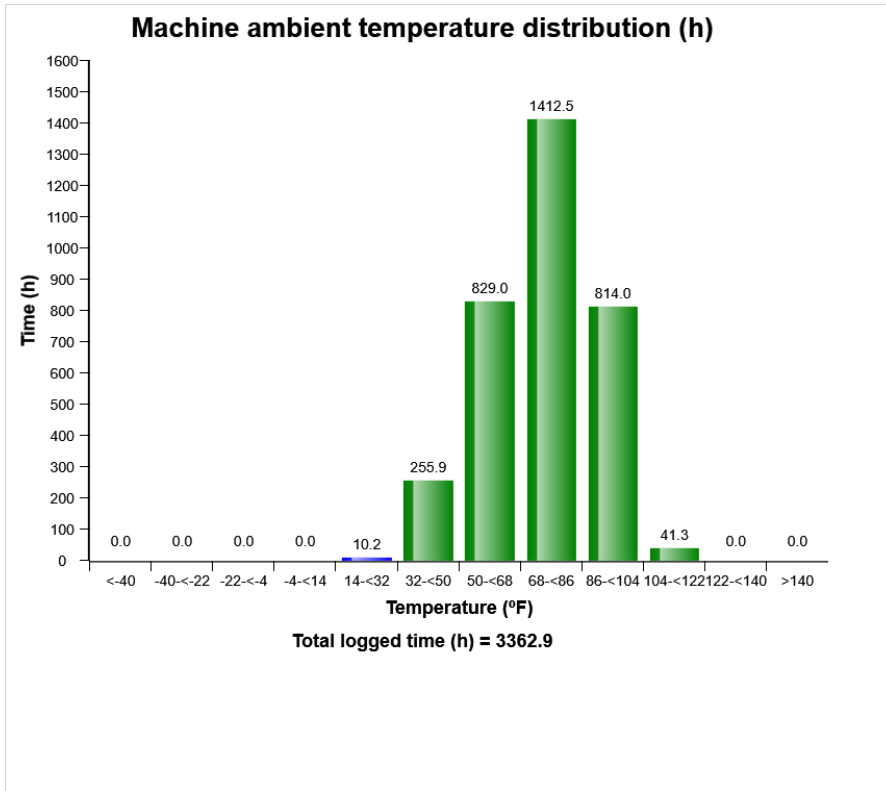
**Machine speed, distribution**



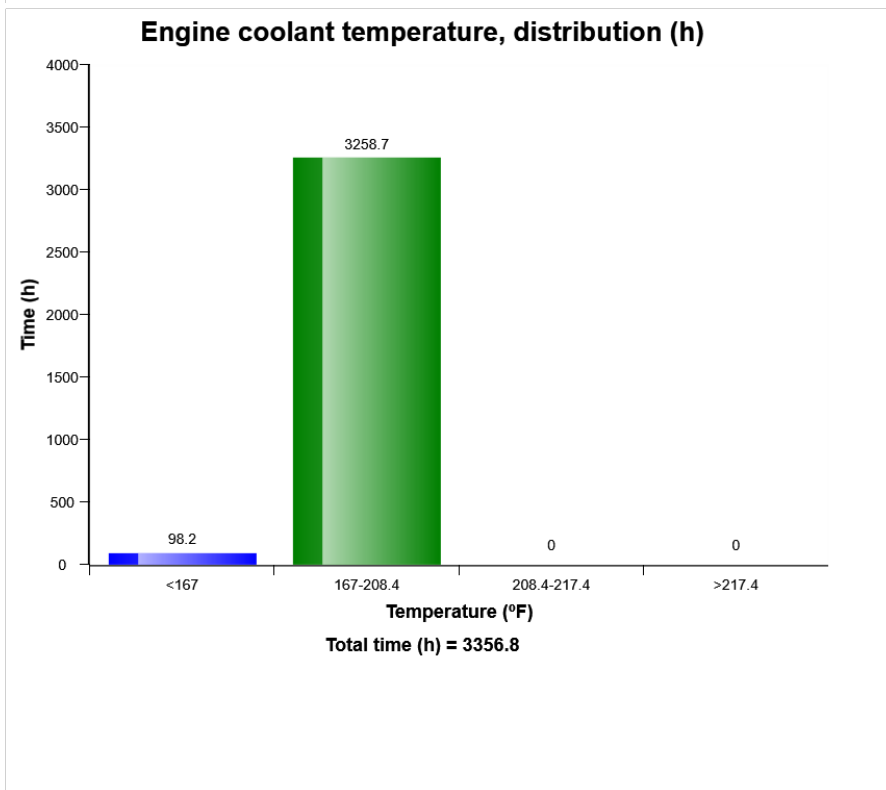
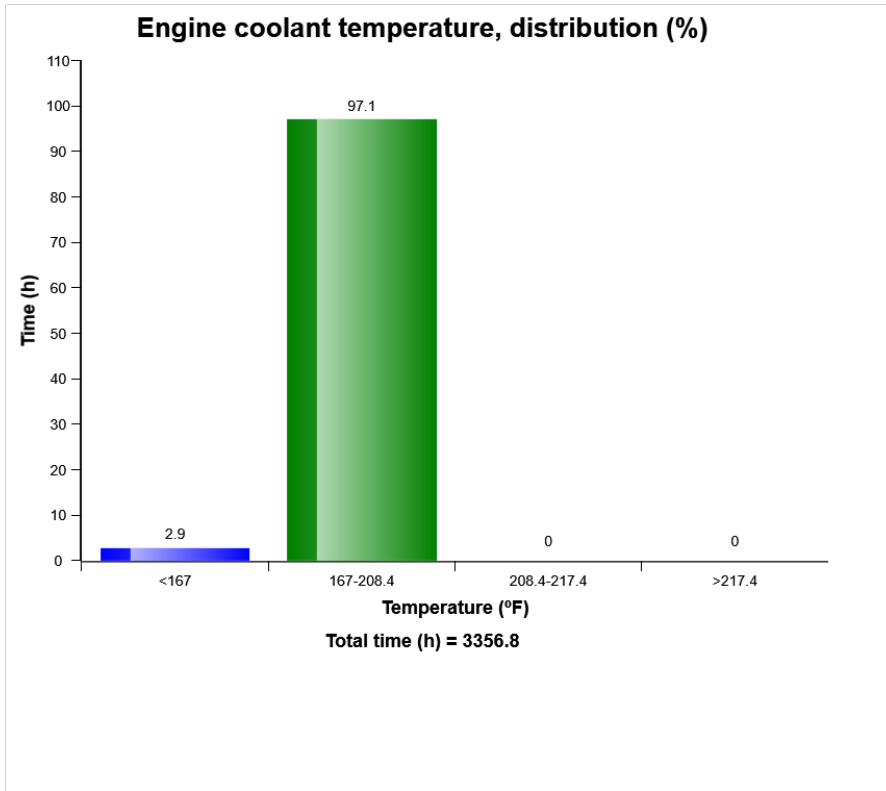
Machine model	SerialNo	Operating Hours	Reading Date
L90H	624234	3345.1	30/01/2020



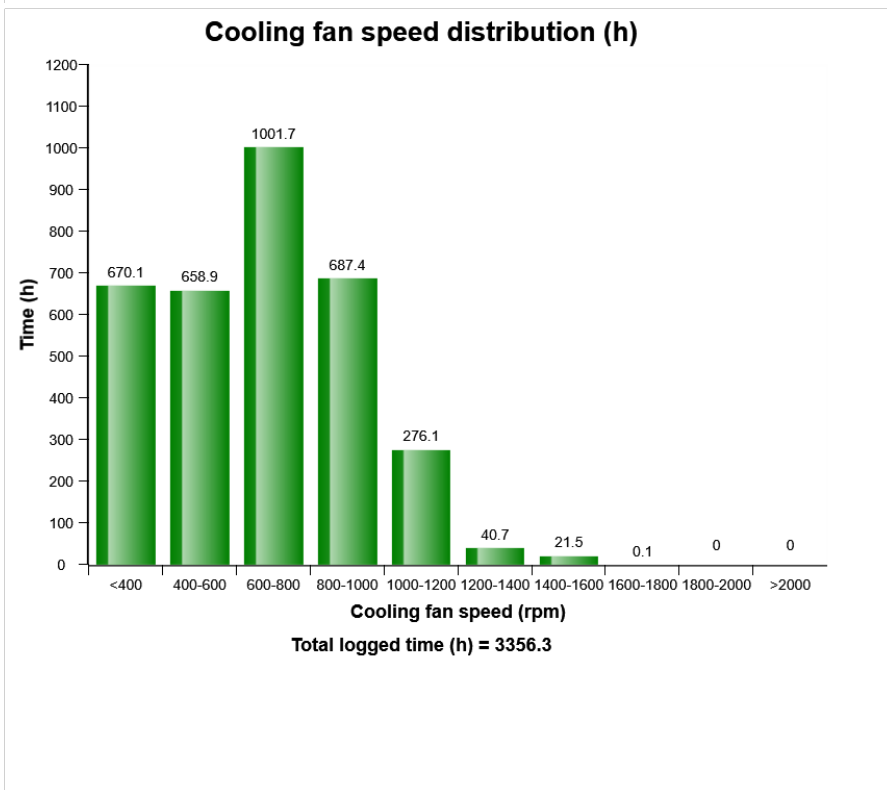
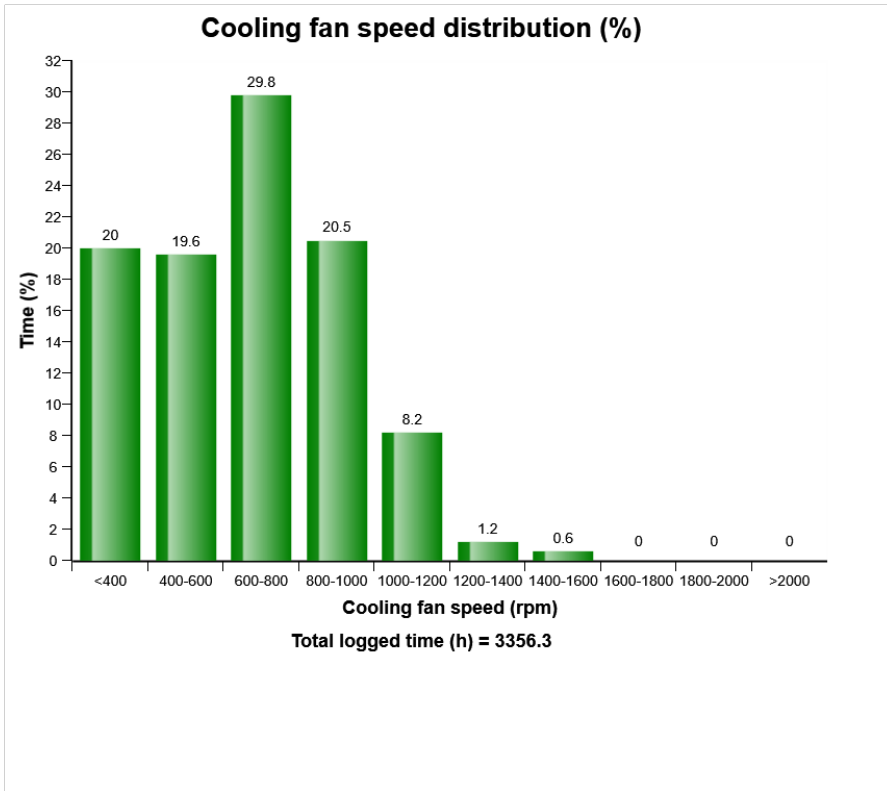
Machine model	SerialNo	Operating Hours	Reading Date
L90H	624234	3345.1	30/01/2020



Machine model	SerialNo	Operating Hours	Reading Date
L90H	624234	3345.1	30/01/2020

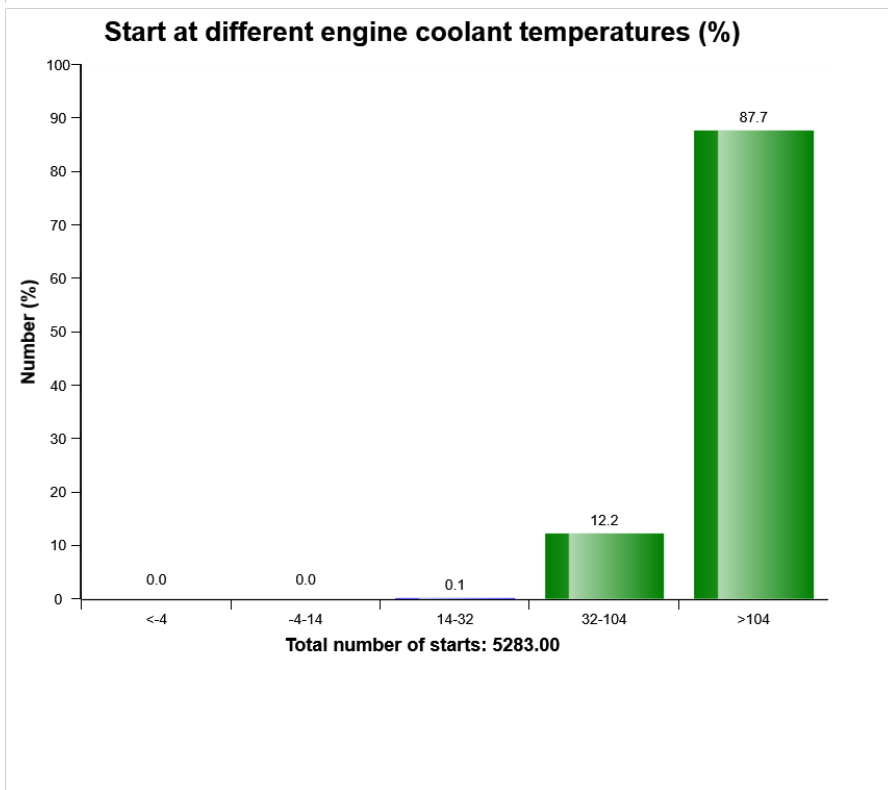
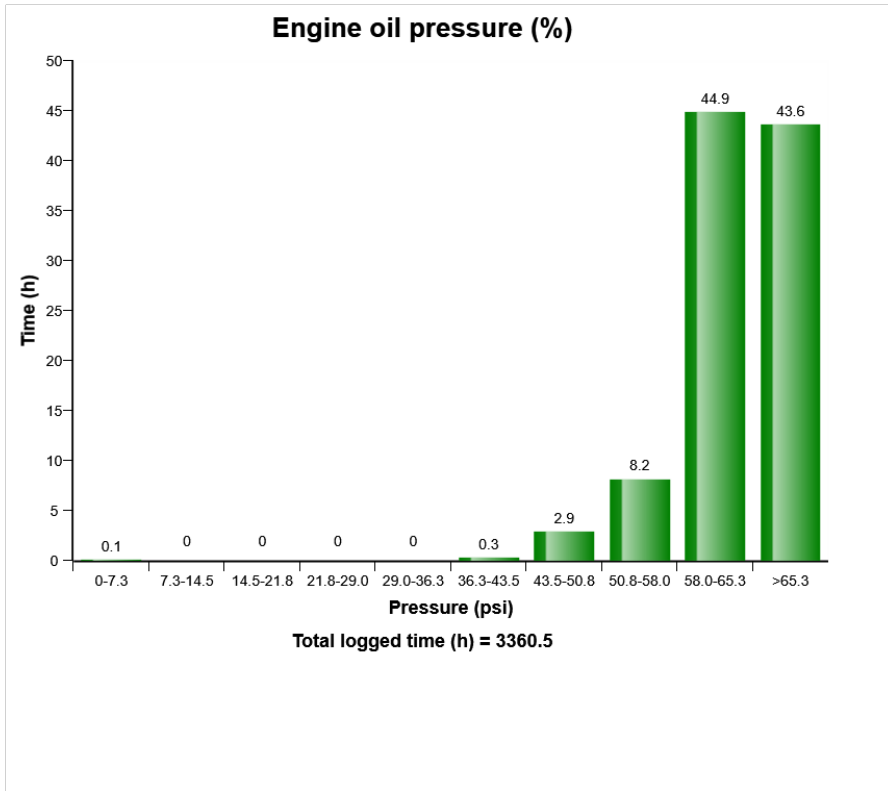


Machine model	SerialNo	Operating Hours	Reading Date
L90H	624234	3345.1	30/01/2020

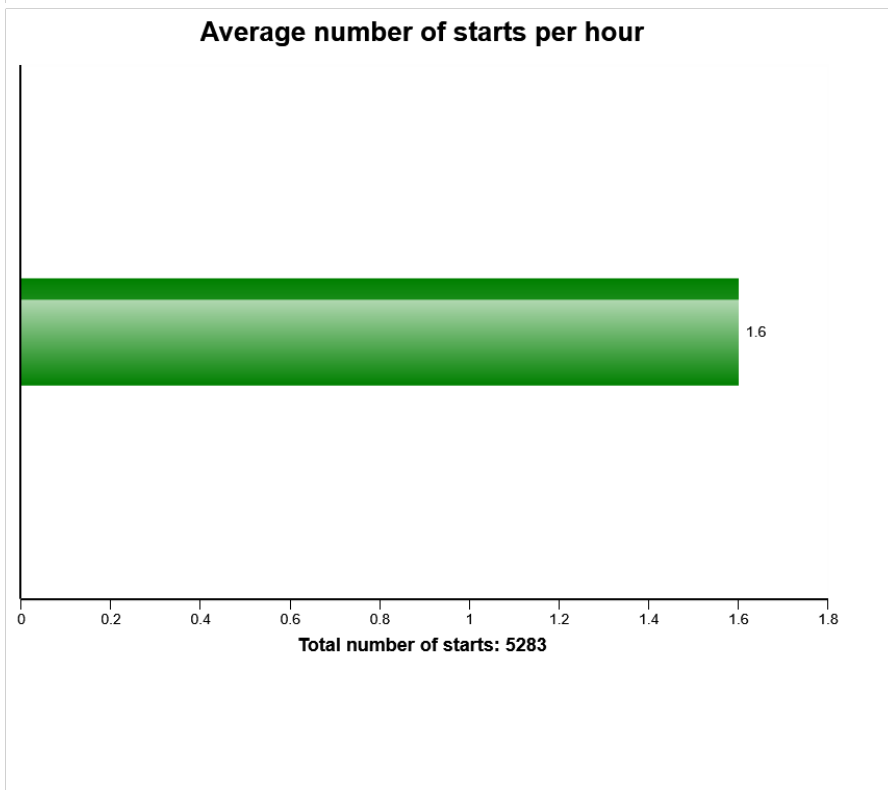
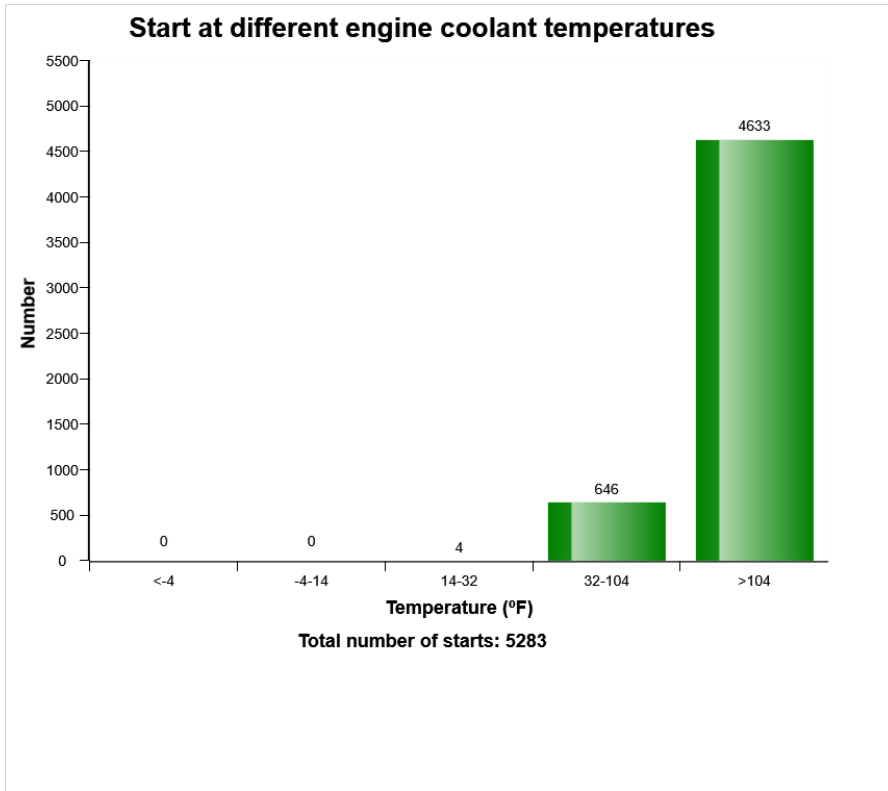




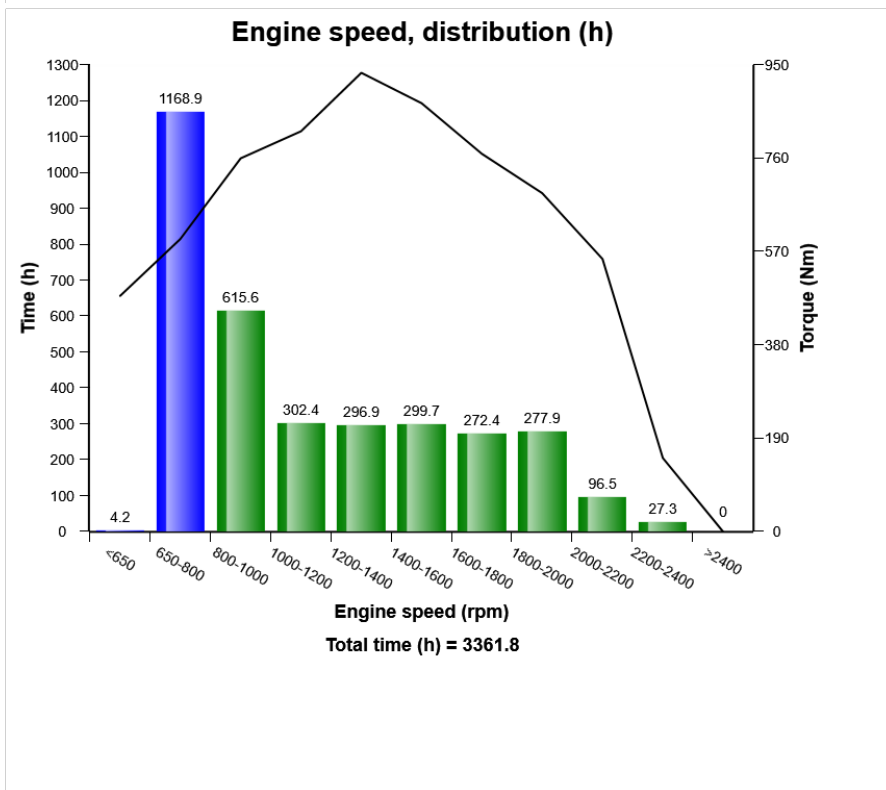
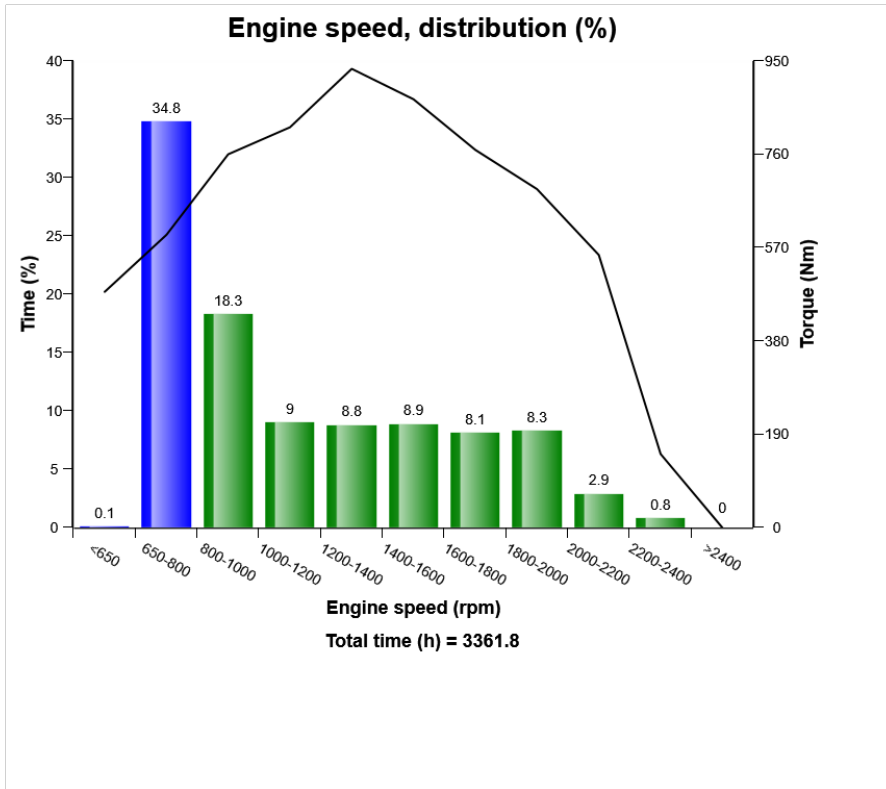
Machine model	SerialNo	Operating Hours	Reading Date
L90H	624234	3345.1	30/01/2020



Machine model	SerialNo	Operating Hours	Reading Date
L90H	624234	3345.1	30/01/2020



Machine model	SerialNo	Operating Hours	Reading Date
L90H	624234	3345.1	30/01/2020



Machine model	SerialNo	Operating Hours	Reading Date
L90H	624234	3345.1	30/01/2020

**Regeneration ignored**  
**Total number of occurrences = 47**

	Op hours	Year	Month	Day	Hour	Minute	Duration (min)
*	1535	2018	12	14	8	49	3
*	1535	2018	12	13	16	13	10
*	1535	2018	12	14	8	37	5
*	1535	2018	12	14	9	27	27
*	1536	2018	12	17	9	36	34
*	1536	2018	12	14	17	26	30
*	1537	2018	12	17	15	8	35
*	1537	2018	12	17	14	44	2
*	1537	2018	12	17	14	10	15
*	1537	2018	12	17	11	41	22
*	2096	2019	4	29	8	15	7
*	2460	2019	7	2	17	44	0
*	3016	2019	10	1	13	49	35
*	3017	2019	10	1	14	31	39
*	3018	2019	10	2	6	11	23
*	3018	2019	10	2	5	24	40
*	3018	2019	10	2	5	14	8
*	3019	2019	10	2	6	39	2
*	3019	2019	10	2	6	35	2
*	3242	2019	11	21	15	4	0



Machine model	SerialNo	Operating Hours	Reading Date
L90H	624234	3345.1	30/01/2020

**Regeneration duration**  
**Total number of occurrences = 9**

Op hours	Year	Month	Day	Hour	Minute	Duration (min)
* 0	2000	0	0	0	0	0
* 0	2000	0	0	0	0	0
* 0	2000	0	0	0	0	0
* 0	2000	0	0	0	0	0
* 0	2000	0	0	0	0	0
* 0	2000	0	0	0	0	0
* 0	2000	0	0	0	0	0
* 0	2000	0	0	0	0	0
* 0	2000	0	0	0	0	0
* 0	2000	0	0	0	0	0
* 0	2000	0	0	0	0	0
* 0	2000	0	0	0	0	0
* 0	2000	0	0	0	0	0
* 0	2000	0	0	0	0	0
* 0	2000	0	0	0	0	0
* 532	2018	4	12	14	28	46
* 1091	2018	8	20	14	21	45
* 1535	2018	12	14	9	48	0
* 1538	2018	12	17	15	44	45
* 2096	2019	4	29	8	23	46
* 2460	2019	7	2	17	44	45
* 3019	2019	10	2	6	40	46
* 3019	2019	10	2	6	34	1
* 3242	2019	11	21	15	4	46





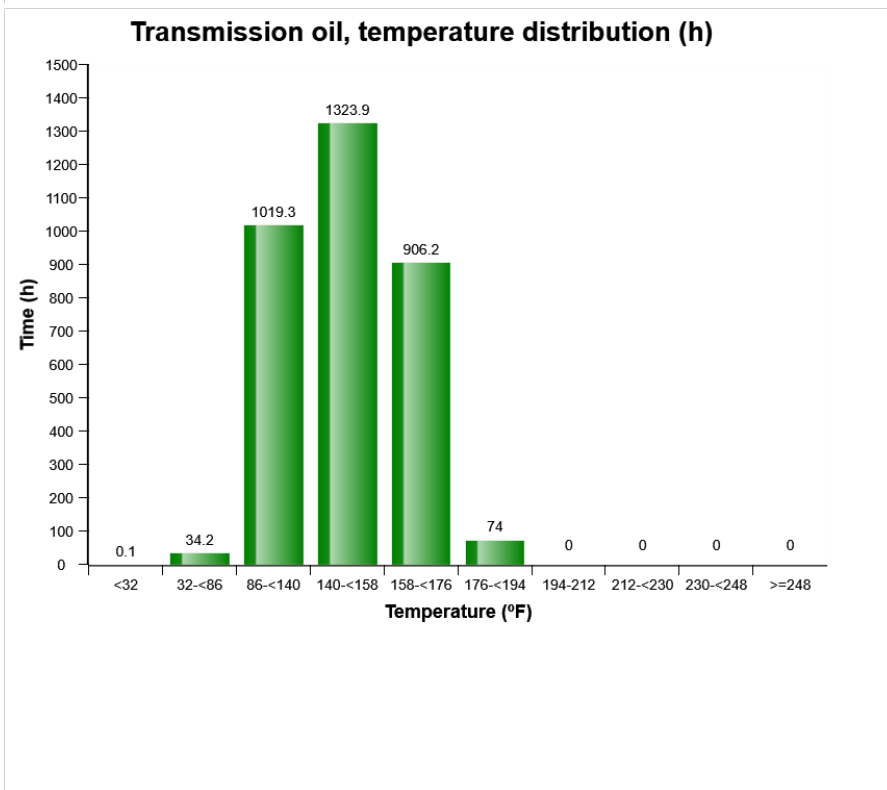
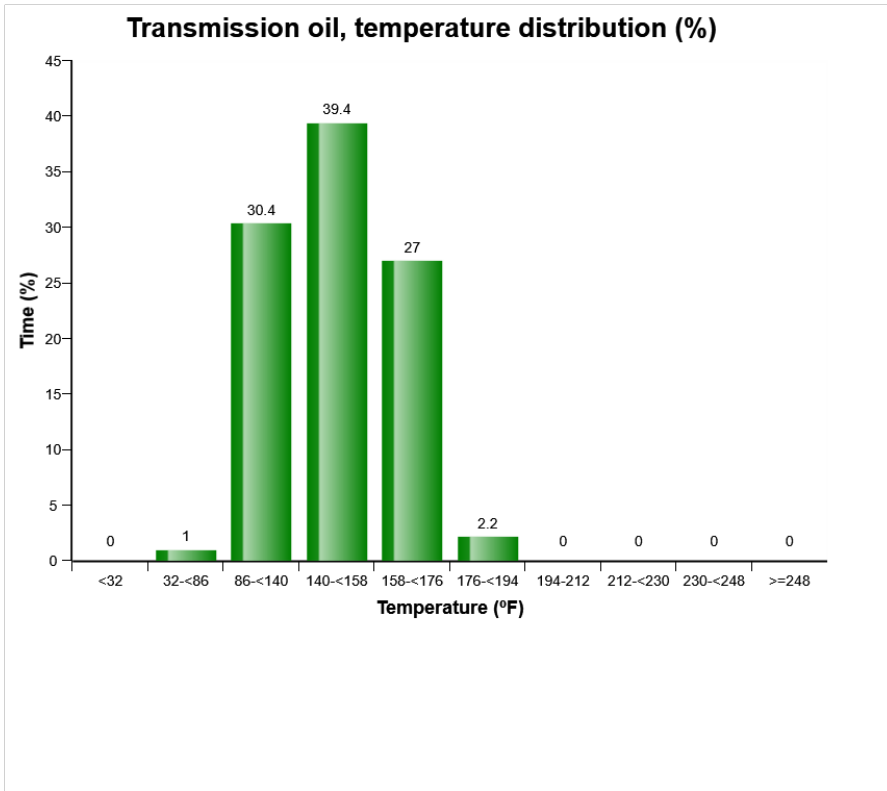
Machine model	SerialNo	Operating Hours	Reading Date
L90H	624234	3345.1	30/01/2020

**Water level warning in water separator**  
**Total number of occurrences = 126**

Op hours	Year	Month	Day	Hour	Minute	Duration (min)
* 1173	2018	9	13	11	39	15
* 1173	2018	9	13	11	1	6
* 1173	2018	9	13	11	8	21
* 1173	2018	9	13	11	35	3
* 1174	2018	9	13	12	4	2
* 1174	2018	9	13	13	20	25
* 1174	2018	9	13	14	23	40
* 1175	2018	9	14	6	51	75
* 1175	2018	9	13	15	4	18
* 1176	2018	9	14	8	29	143
* 1176	2018	9	14	8	9	8
* 1179	2018	9	14	11	17	37
* 1179	2018	9	14	12	48	41
* 1180	2018	9	14	14	2	74
* 1180	2018	9	14	13	33	6
* 1181	2018	9	17	7	39	6
* 1181	2018	9	14	16	0	4
* 1182	2018	9	17	10	12	75
* 1182	2018	9	17	7	55	51
* 1184	2018	9	17	11	38	12

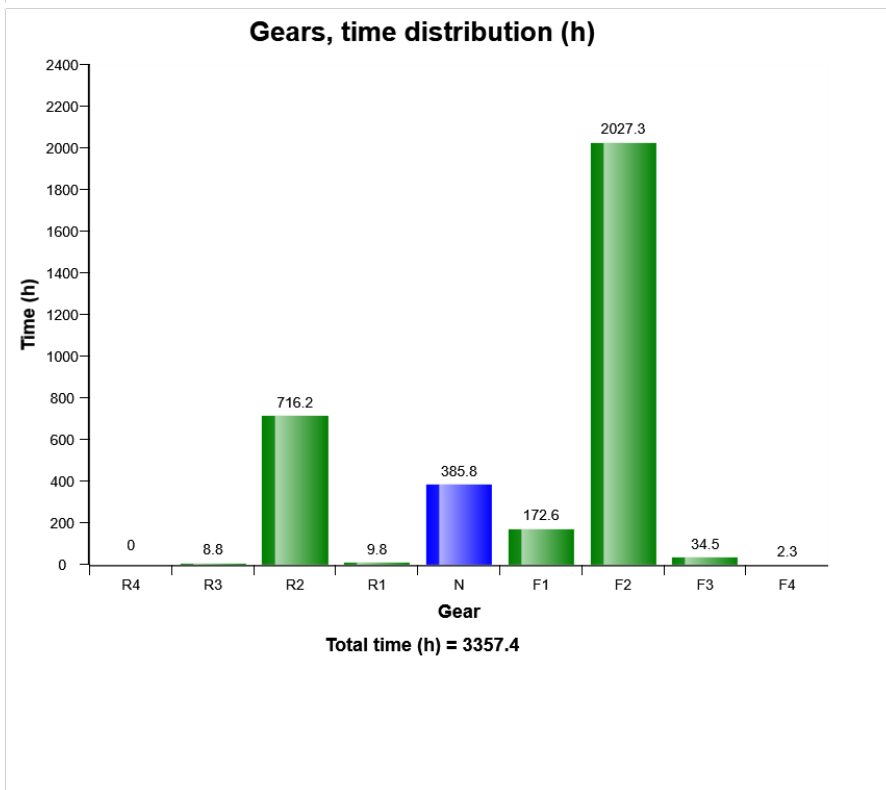
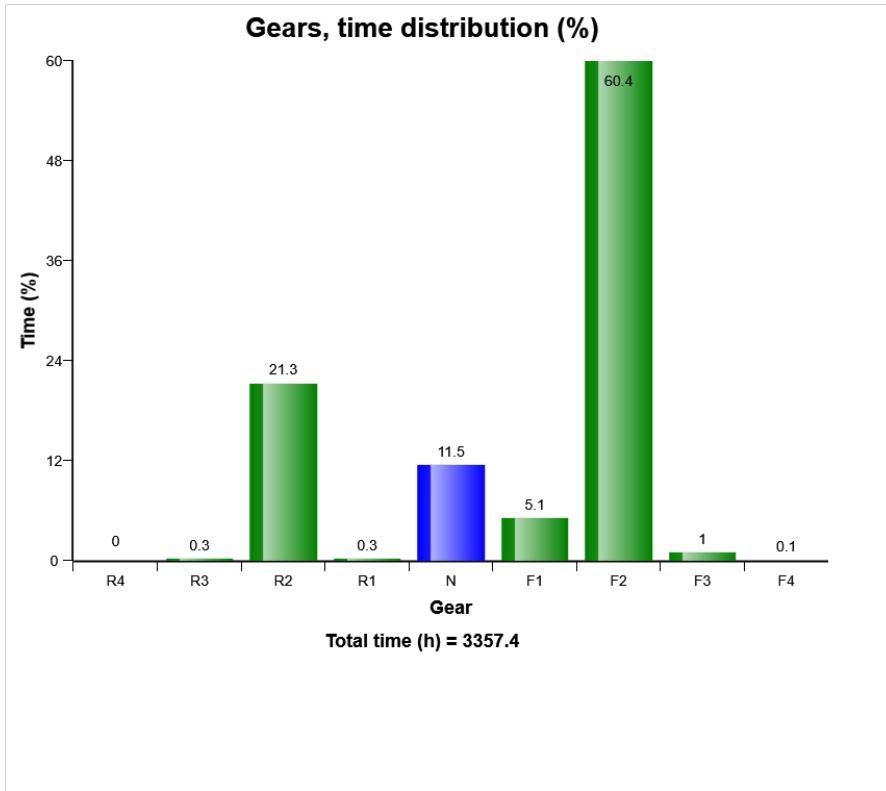


Machine model	SerialNo	Operating Hours	Reading Date
L90H	624234	3345.1	30/01/2020





Machine model	SerialNo	Operating Hours	Reading Date
L90H	624234	3345.1	30/01/2020



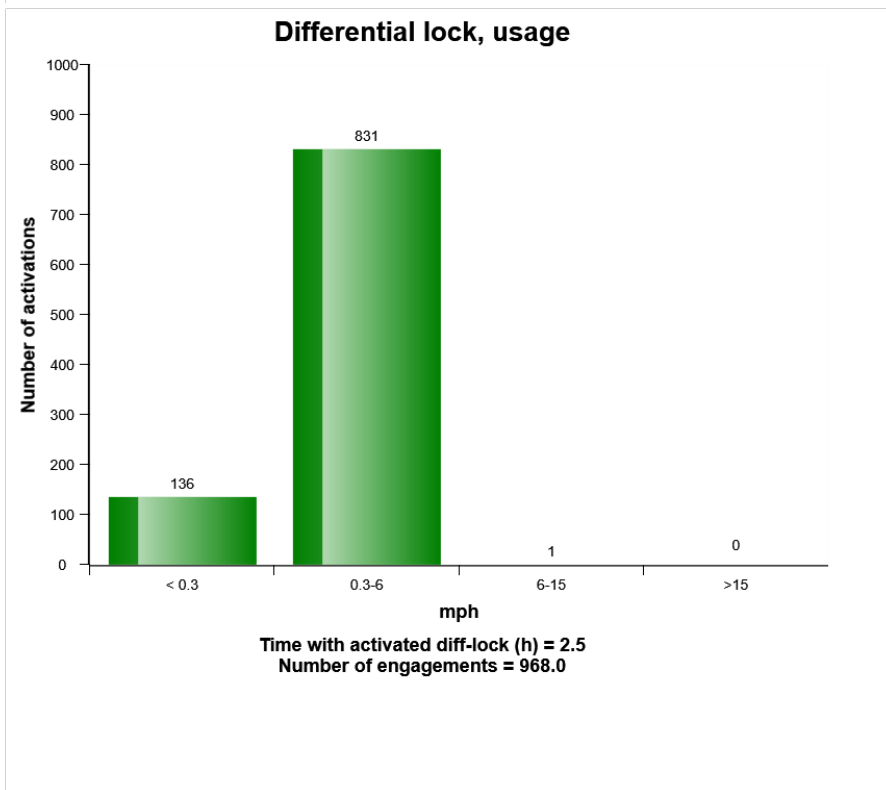
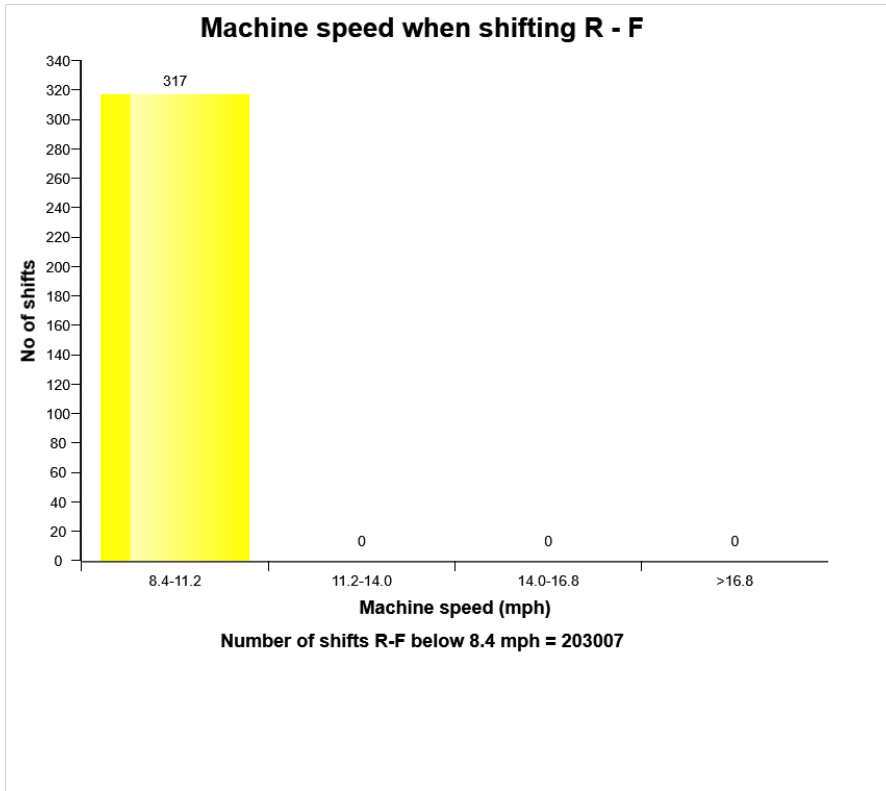
Machine model L90H	SerialNo 624234	Operating Hours 3345.1	Reading Date 30/01/2020
-----------------------	--------------------	---------------------------	----------------------------

**Transmission oil temperature high**  
**Total number of occurrences = 0**

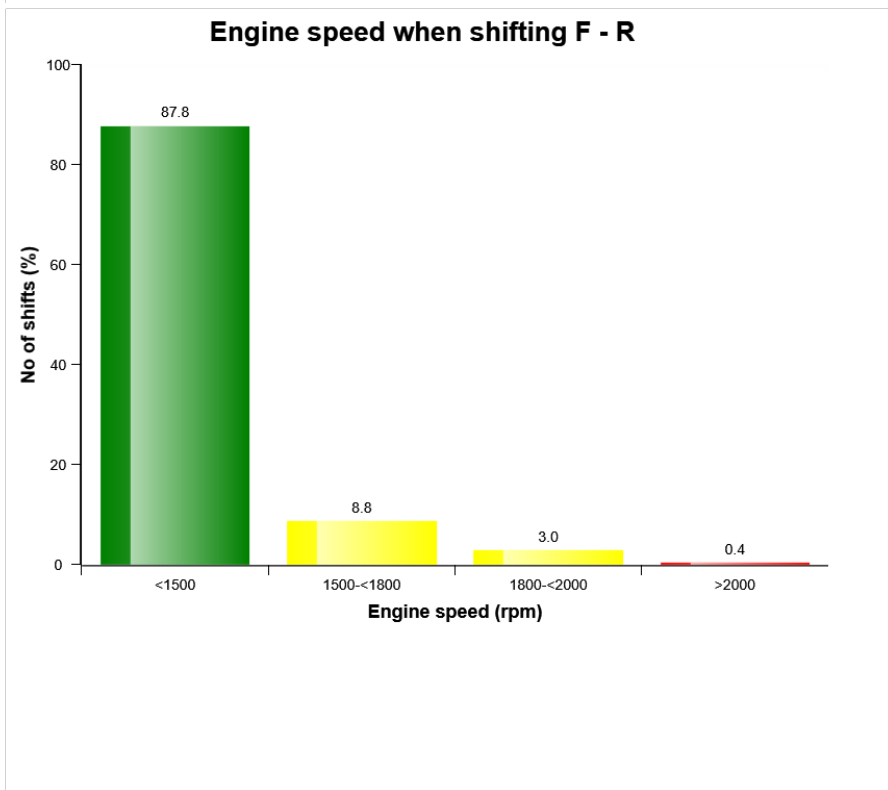
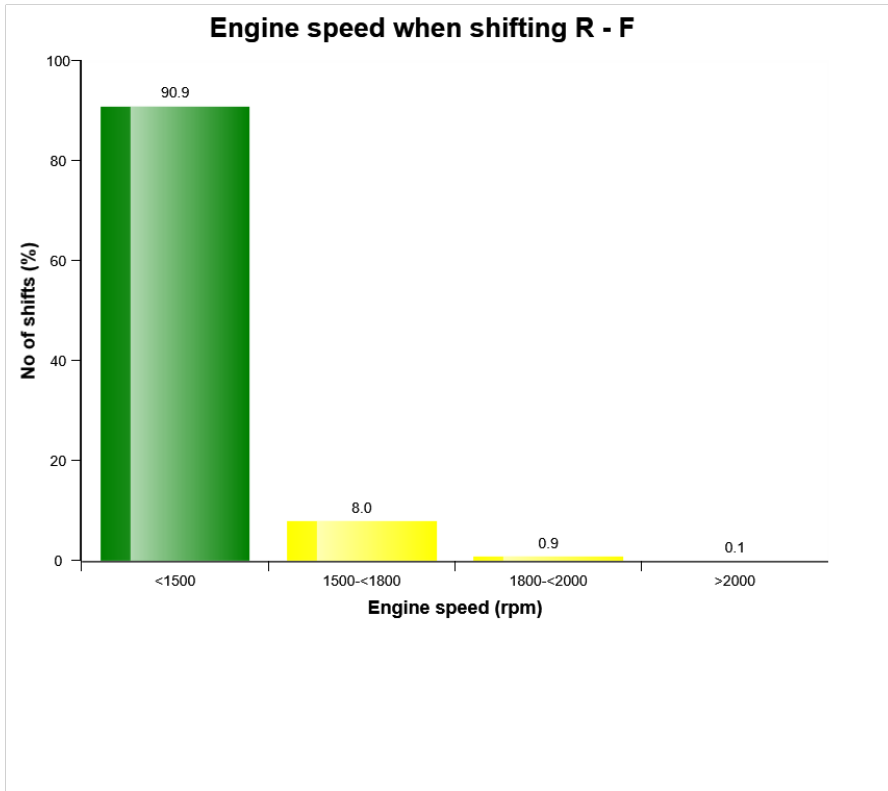
<b>Op hours</b>	<b>Year</b>	<b>Month</b>	<b>Day</b>	<b>Hour</b>	<b>Minute</b>	<b>Duration (seconds)</b>	<b>Extreme (° F)</b>
0	2000	0	0	0	0	0	32
0	2000	0	0	0	0	0	32
0	2000	0	0	0	0	0	32
0	2000	0	0	0	0	0	32
0	2000	0	0	0	0	0	32
0	2000	0	0	0	0	0	32
0	2000	0	0	0	0	0	32
0	2000	0	0	0	0	0	32
0	2000	0	0	0	0	0	32
0	2000	0	0	0	0	0	32
0	2000	0	0	0	0	0	32
0	2000	0	0	0	0	0	32
0	2000	0	0	0	0	0	32
0	2000	0	0	0	0	0	32
0	2000	0	0	0	0	0	32
0	2000	0	0	0	0	0	32
0	2000	0	0	0	0	0	32
0	2000	0	0	0	0	0	32
0	2000	0	0	0	0	0	32
0	2000	0	0	0	0	0	32
0	2000	0	0	0	0	0	32
0	2000	0	0	0	0	0	32
0	2000	0	0	0	0	0	32
0	2000	0	0	0	0	0	32
0	2000	0	0	0	0	0	32



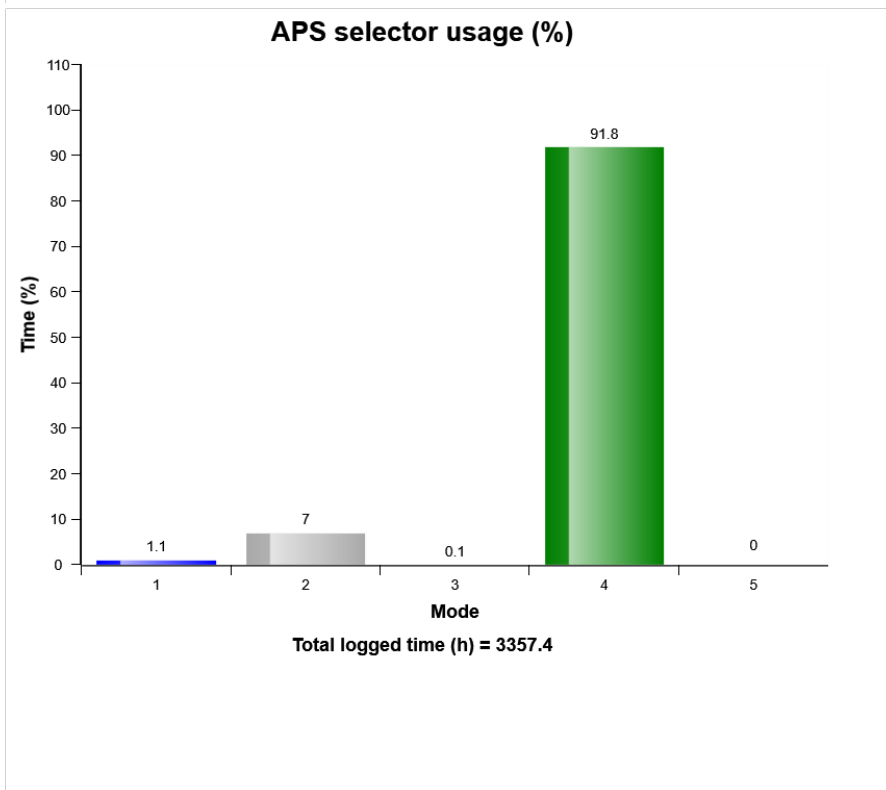
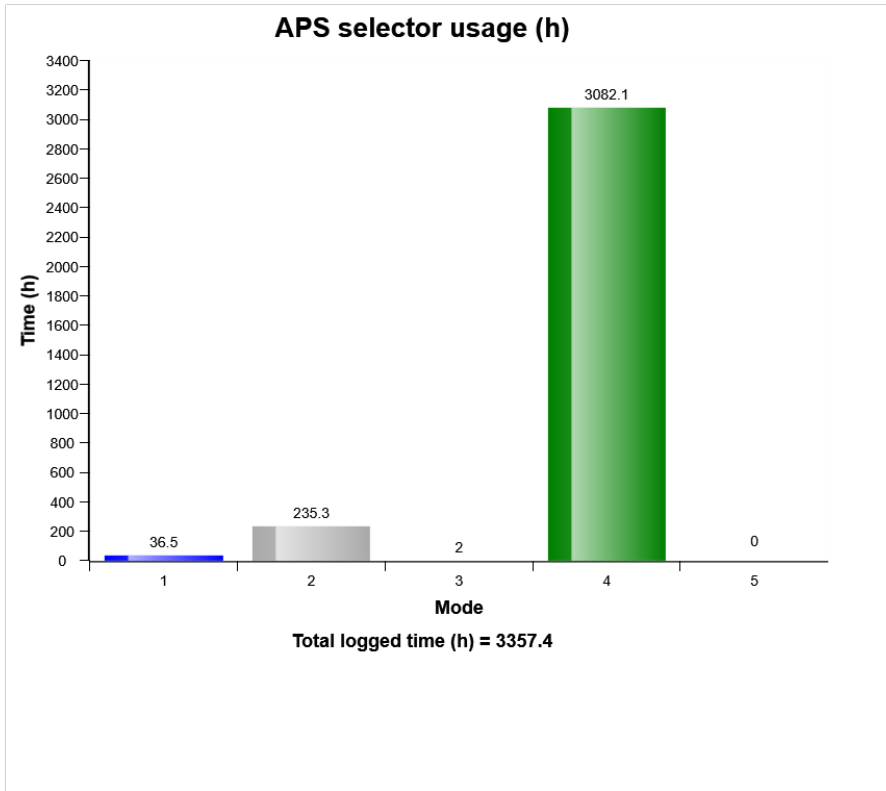
Machine model	SerialNo	Operating Hours	Reading Date
L90H	624234	3345.1	30/01/2020



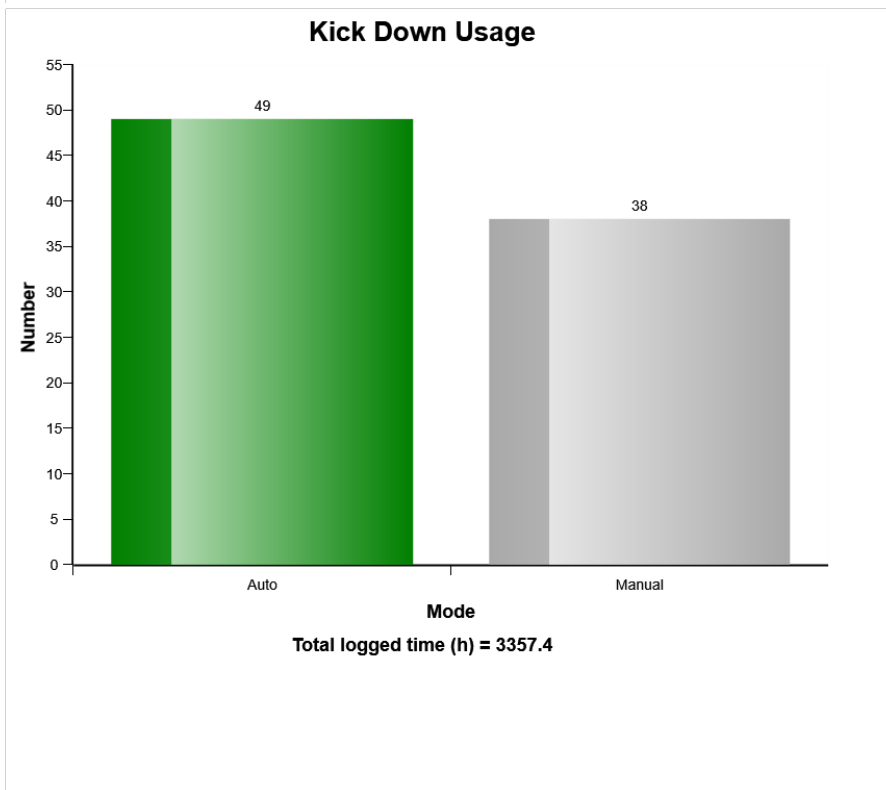
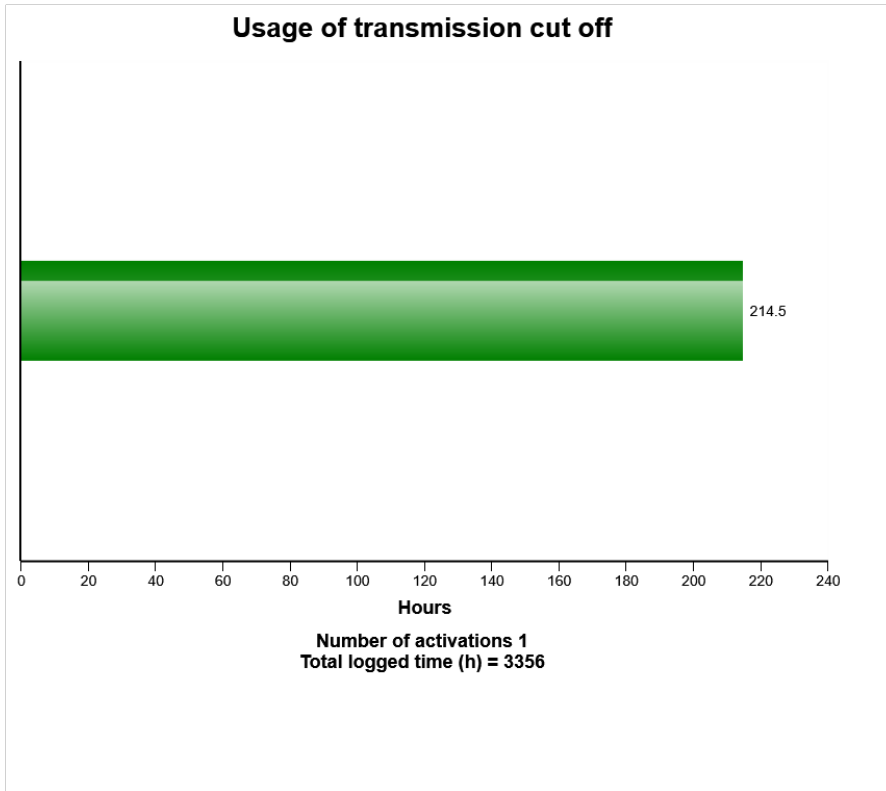
Machine model	SerialNo	Operating Hours	Reading Date
L90H	624234	3345.1	30/01/2020



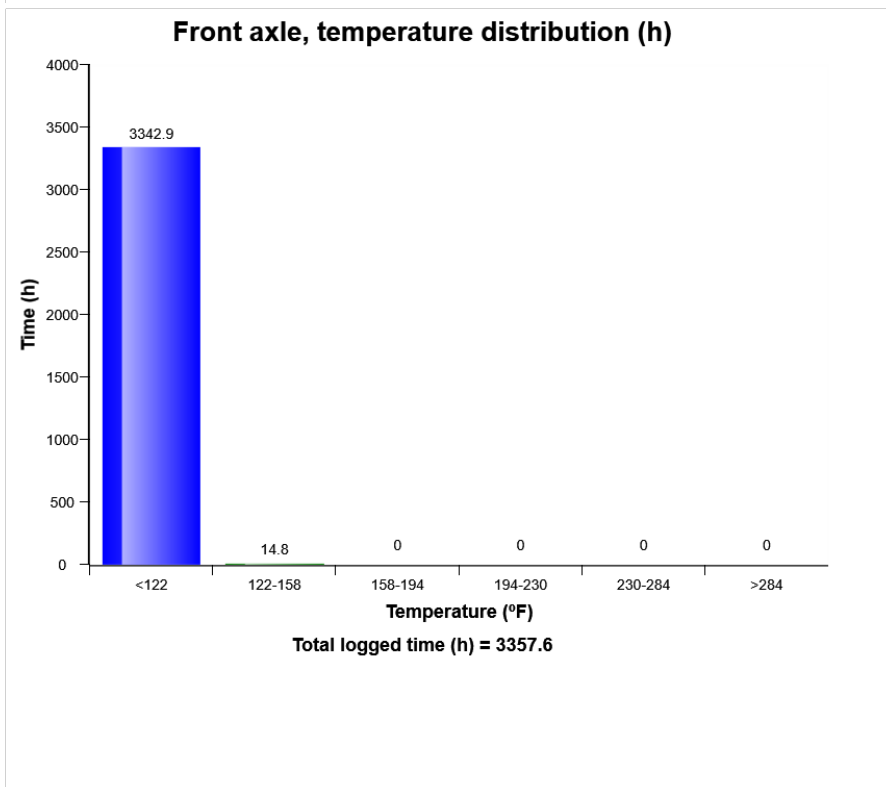
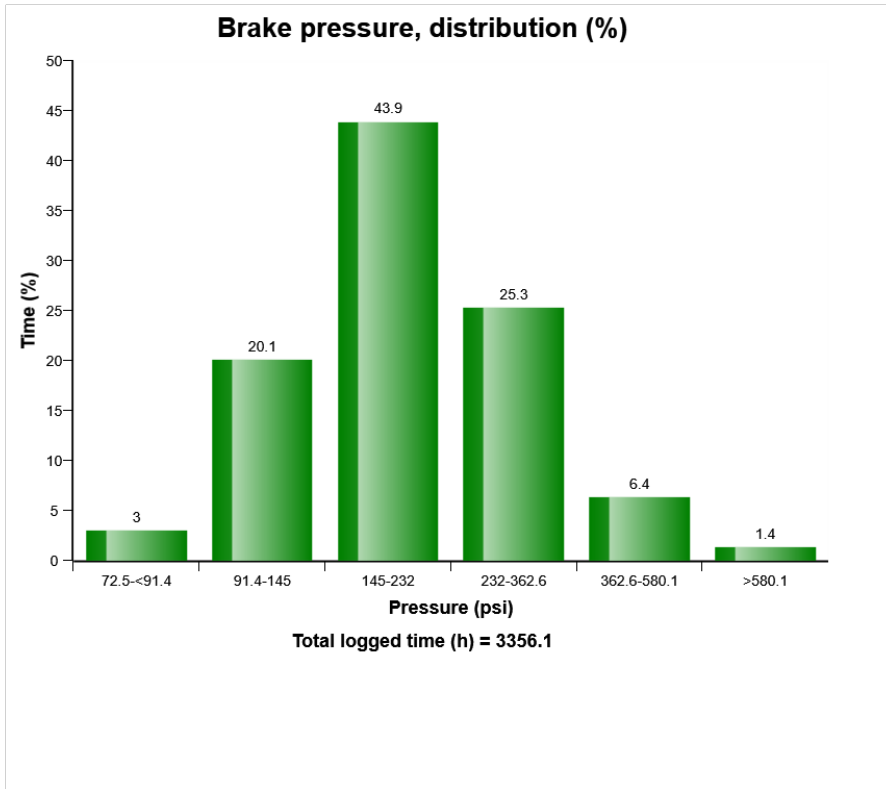
Machine model	SerialNo	Operating Hours	Reading Date
L90H	624234	3345.1	30/01/2020



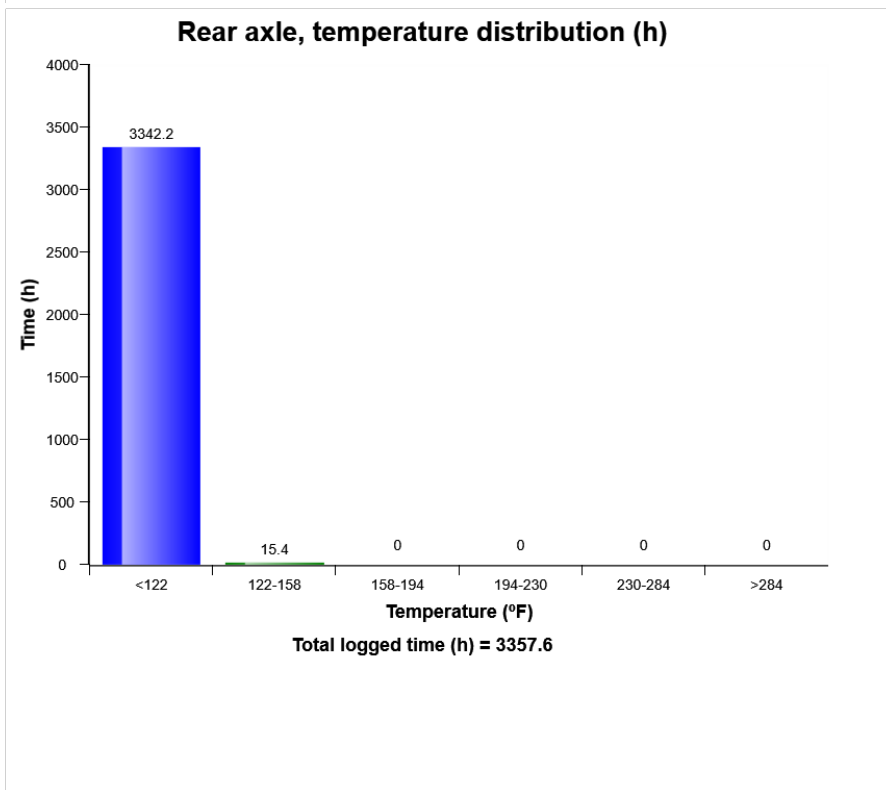
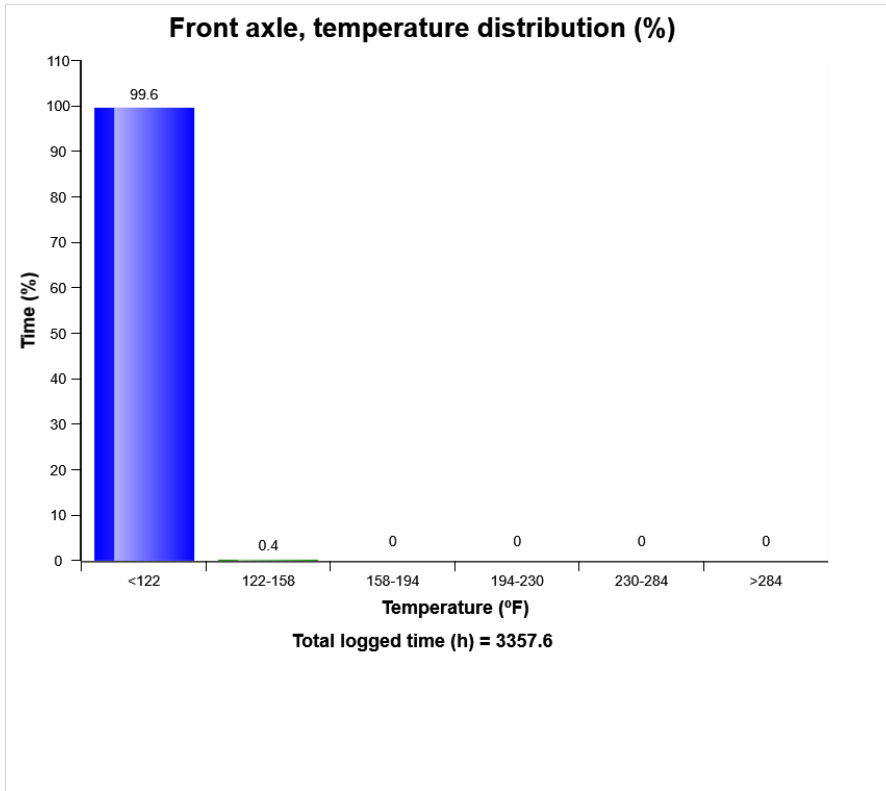
Machine model	SerialNo	Operating Hours	Reading Date
L90H	624234	3345.1	30/01/2020



Machine model	SerialNo	Operating Hours	Reading Date
L90H	624234	3345.1	30/01/2020



Machine model	SerialNo	Operating Hours	Reading Date
L90H	624234	3345.1	30/01/2020





Machine model	SerialNo	Operating Hours	Reading Date
L90H	624234	3345.1	30/01/2020

**Parking brake usage**  
**Total number of occurrences = 8830**

Op hours	Year	Month	Day	Hour	Minute	Duration (minutes)
0	2020	1	17	15	34	0
0	2020	1	14	10	24	1
0	2020	1	14	10	20	0
0	2020	1	10	16	29	0
0	2020	1	10	16	25	2
0	2020	1	10	16	17	1
0	2020	1	10	9	39	0
0	2020	1	10	9	34	4
0	2020	1	10	9	31	1
0	2020	1	30	11	26	5
0	2020	1	30	11	11	8
0	2020	1	30	11	9	0
0	2020	1	27	10	42	0
0	2020	1	27	10	40	0
0	2020	1	21	13	19	0
0	2020	1	21	13	18	0
0	2020	1	21	10	0	0
0	2020	1	21	9	58	0
0	2020	1	14	10	27	0
0	2020	1	16	10	27	2



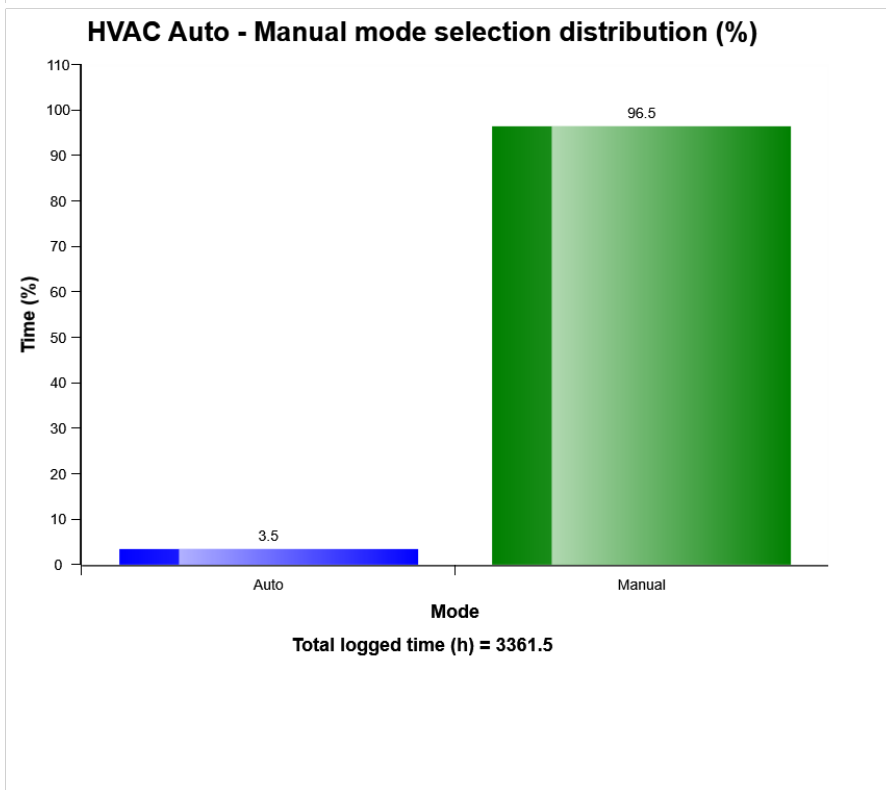
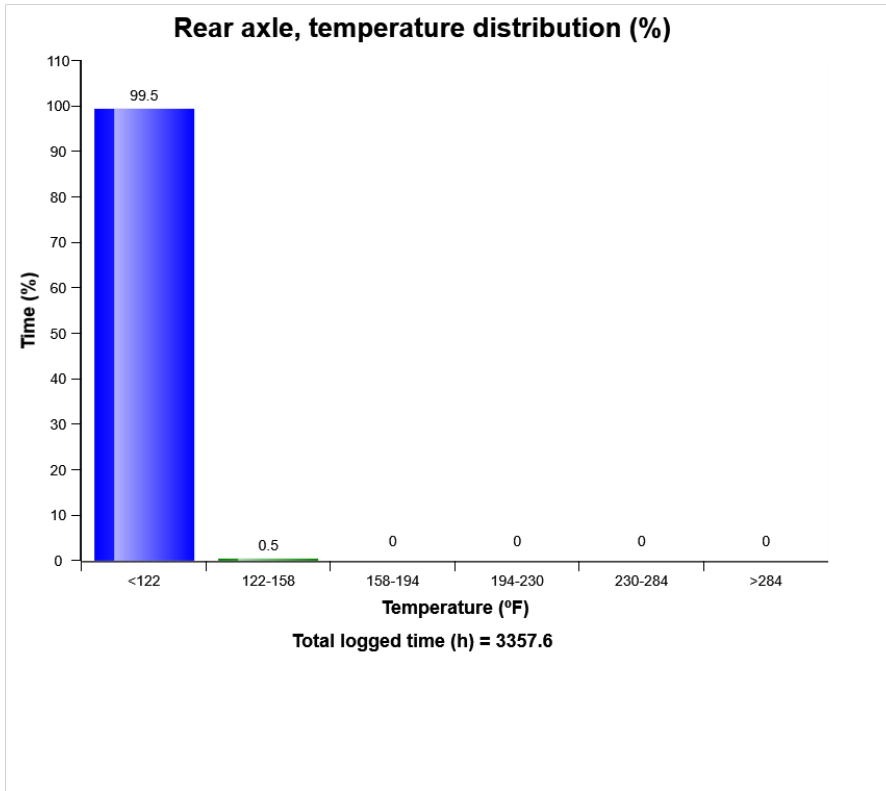
Machine model	SerialNo	Operating Hours	Reading Date
L90H	624234	3345.1	30/01/2020

**Parking brake abuse**  
**Total number of occurrences = 1**

Op hours	Year	Month	Day	Hour	Minute	Duration (seconds)	Extreme (km/h)
0	2019	7	31	6	6	0	4
0	2000	0	0	0	0	0	0
0	2000	0	0	0	0	0	0
0	2000	0	0	0	0	0	0
0	2000	0	0	0	0	0	0
0	2000	0	0	0	0	0	0
0	2000	0	0	0	0	0	0
0	2000	0	0	0	0	0	0
0	2000	0	0	0	0	0	0
0	2000	0	0	0	0	0	0
0	2000	0	0	0	0	0	0
0	2000	0	0	0	0	0	0
0	2000	0	0	0	0	0	0
0	2000	0	0	0	0	0	0
0	2000	0	0	0	0	0	0
0	2000	0	0	0	0	0	0
0	2000	0	0	0	0	0	0
0	2000	0	0	0	0	0	0
0	2000	0	0	0	0	0	0
0	2000	0	0	0	0	0	0
0	2000	0	0	0	0	0	0
0	2000	0	0	0	0	0	0
0	2000	0	0	0	0	0	0

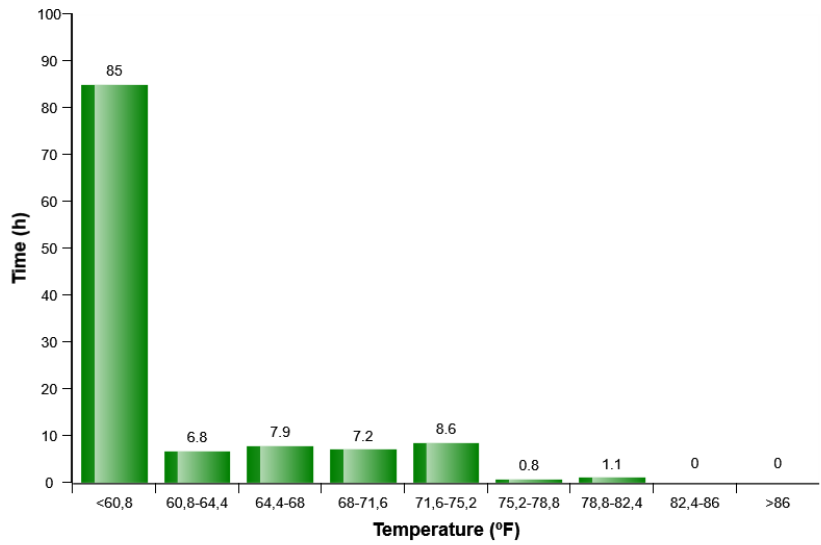


Machine model	SerialNo	Operating Hours	Reading Date
L90H	624234	3345.1	30/01/2020

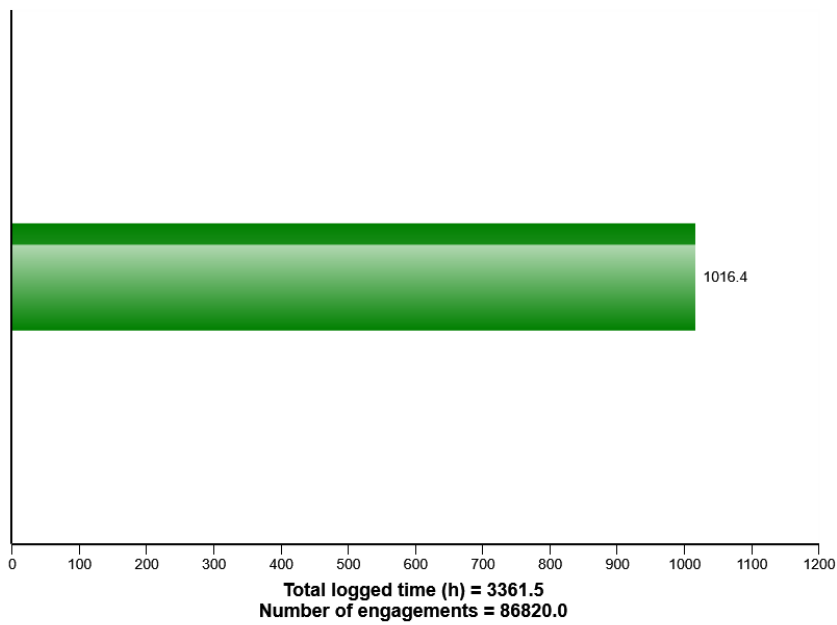


Machine model	SerialNo	Operating Hours	Reading Date
L90H	624234	3345.1	30/01/2020

### HVAC air temperature setting in auto control mode distribution (h)

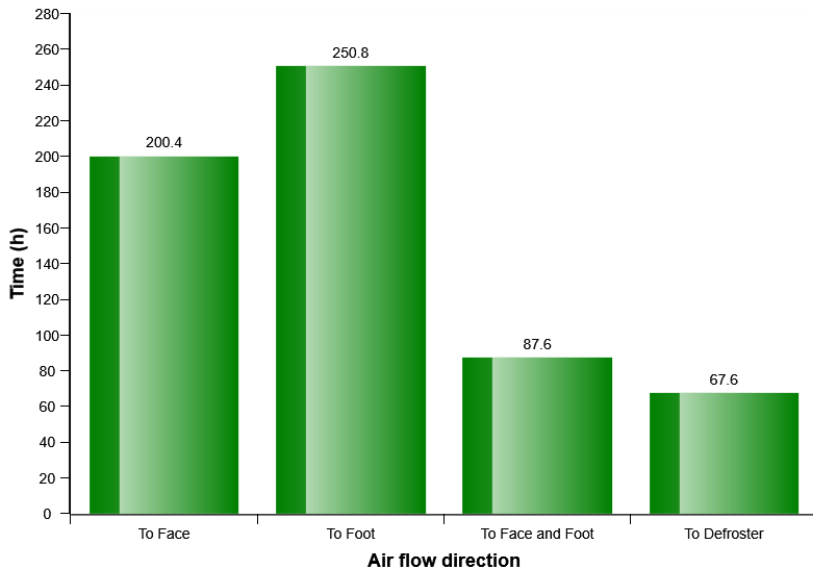


### AC Compressor usage

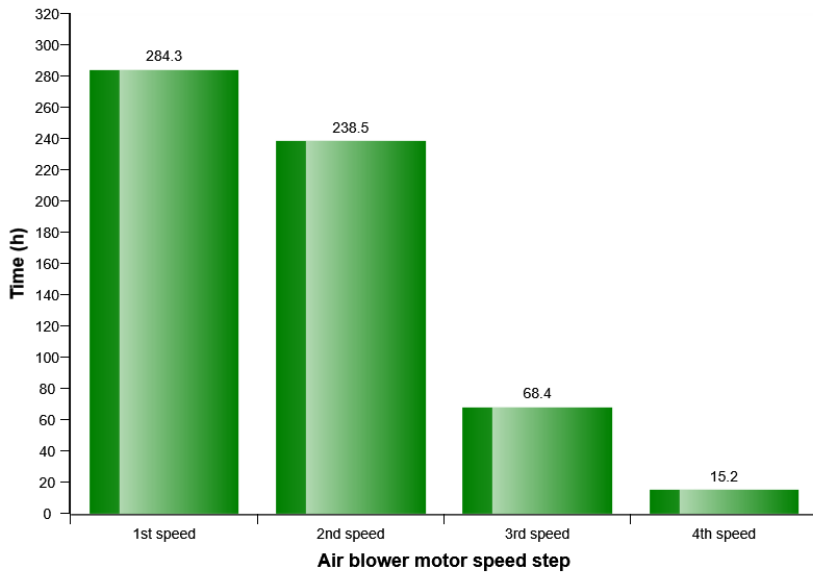


Machine model	SerialNo	Operating Hours	Reading Date
L90H	624234	3345.1	30/01/2020

### HVAC air flow direction in manual mode distribution (h)



### HVAC air blower motor speed in manual mode distribution (h)



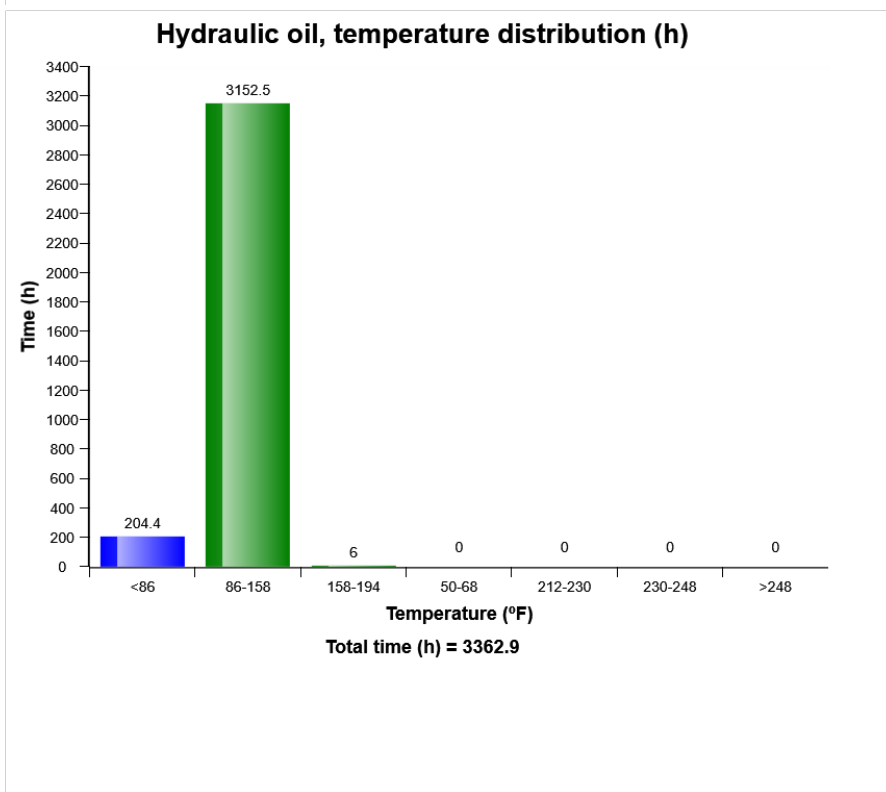
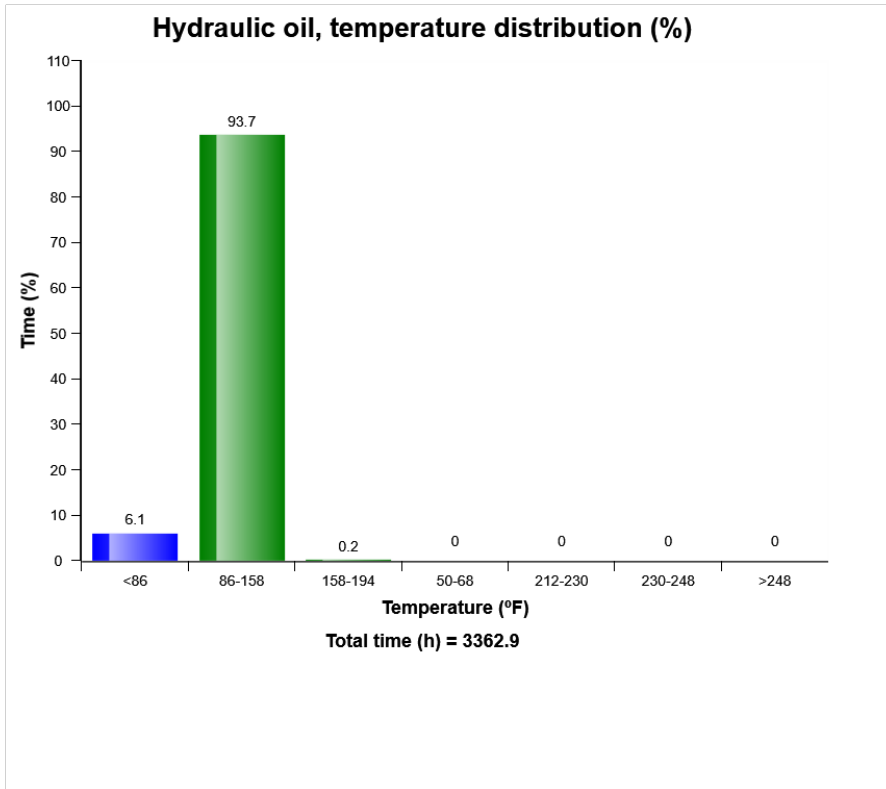
Machine model	SerialNo	Operating Hours	Reading Date
L90H	624234	3345.1	30/01/2020

**AC High Pressure**  
**Total number of occurrences = 0**

Op hours	Year	Month	Day	Hour	Minute	Duration (seconds)	Ambient temperature (°F)
0	2000	0	0	0	0	0	32
0	2000	0	0	0	0	0	32
0	2000	0	0	0	0	0	32
0	2000	0	0	0	0	0	32
0	2000	0	0	0	0	0	32
0	2000	0	0	0	0	0	32
0	2000	0	0	0	0	0	32
0	2000	0	0	0	0	0	32
0	2000	0	0	0	0	0	32
0	2000	0	0	0	0	0	32
0	2000	0	0	0	0	0	32
0	2000	0	0	0	0	0	32
0	2000	0	0	0	0	0	32
0	2000	0	0	0	0	0	32
0	2000	0	0	0	0	0	32
0	2000	0	0	0	0	0	32
0	2000	0	0	0	0	0	32
0	2000	0	0	0	0	0	32
0	2000	0	0	0	0	0	32
0	2000	0	0	0	0	0	32
0	2000	0	0	0	0	0	32
0	2000	0	0	0	0	0	32
0	2000	0	0	0	0	0	32
0	2000	0	0	0	0	0	32
0	2000	0	0	0	0	0	32
0	2000	0	0	0	0	0	32
0	2000	0	0	0	0	0	32
0	2000	0	0	0	0	0	32
0	2000	0	0	0	0	0	32
0	2000	0	0	0	0	0	32
0	2000	0	0	0	0	0	32
0	2000	0	0	0	0	0	32



Machine model	SerialNo	Operating Hours	Reading Date
L90H	624234	3345.1	30/01/2020



Machine model L90H	SerialNo 624234	Operating Hours 3345.1	Reading Date 30/01/2020
-----------------------	--------------------	---------------------------	----------------------------

**High hydraulic oil temperature  
Total number of occurrences = 0**

Op hours	Year	Month	Day	Hour	Minute	Duration (seconds)	Extreme (° F)
0	2000	0	0	0	0	0	32
0	2000	0	0	0	0	0	32
0	2000	0	0	0	0	0	32
0	2000	0	0	0	0	0	32
0	2000	0	0	0	0	0	32
0	2000	0	0	0	0	0	32
0	2000	0	0	0	0	0	32
0	2000	0	0	0	0	0	32
0	2000	0	0	0	0	0	32
0	2000	0	0	0	0	0	32
0	2000	0	0	0	0	0	32
0	2000	0	0	0	0	0	32
0	2000	0	0	0	0	0	32
0	2000	0	0	0	0	0	32
0	2000	0	0	0	0	0	32
0	2000	0	0	0	0	0	32
0	2000	0	0	0	0	0	32
0	2000	0	0	0	0	0	32
0	2000	0	0	0	0	0	32
0	2000	0	0	0	0	0	32
0	2000	0	0	0	0	0	32
0	2000	0	0	0	0	0	32
0	2000	0	0	0	0	0	32
0	2000	0	0	0	0	0	32
0	2000	0	0	0	0	0	32
0	2000	0	0	0	0	0	32
0	2000	0	0	0	0	0	32
0	2000	0	0	0	0	0	32
0	2000	0	0	0	0	0	32
0	2000	0	0	0	0	0	32
0	2000	0	0	0	0	0	32
0	2000	0	0	0	0	0	32
0	2000	0	0	0	0	0	32
0	2000	0	0	0	0	0	32
0	2000	0	0	0	0	0	32
0	2000	0	0	0	0	0	32
0	2000	0	0	0	0	0	32
0	2000	0	0	0	0	0	32
0	2000	0	0	0	0	0	32

