

VOLVO CONSTRUCTION EQUIPMENT MATRIS REPORT

Machine model EC750E	SerialNo 310069	Operating Hours 4518.5	Reading Date 03/12/2019
Company name Elmore Sand & Gravel	Dealer	Report Issuer	
Contact name	Technician Brandon Hallowell	Primary Application Mining	
Site	Workorder	Ground Condition	

MATRIS Reading, Summary / Recommendation



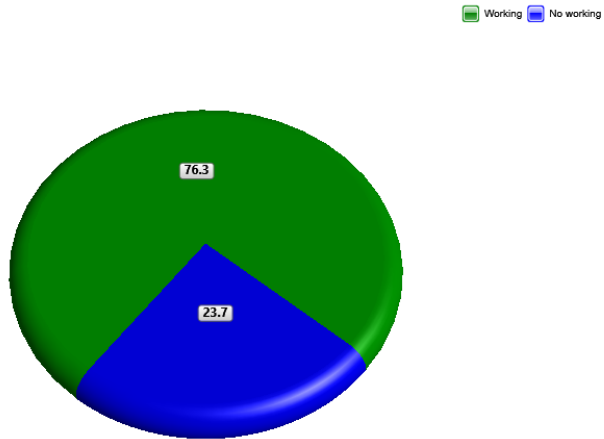
Machine model	SerialNo	Operating Hours	Reading Date
EC750E	310069	4518.5	03/12/2019

Main equipment	Type	Equipment
	Track chain	
	X3 piping	
	Attachment Interface	
	Hydraulic Fluid	
	X1 Piping	
	Main Attachment	
	Hose Rupture Valve on Boom	
	Hose Rupture Valve on Arm	
	X1 return filter	



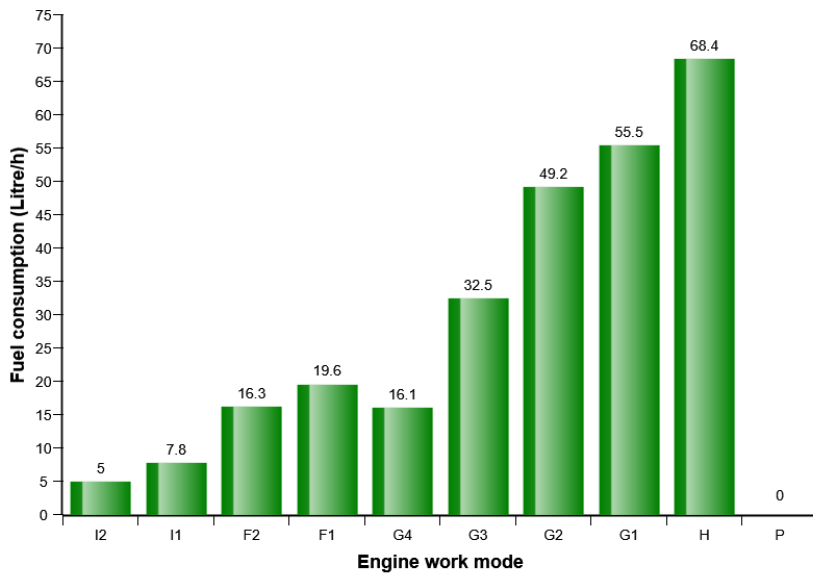
Machine model	SerialNo	Operating Hours	Reading Date
EC750E	310069	4518.5	03/12/2019

Machine utilization (%)



Total logged time (h) = 4518.6

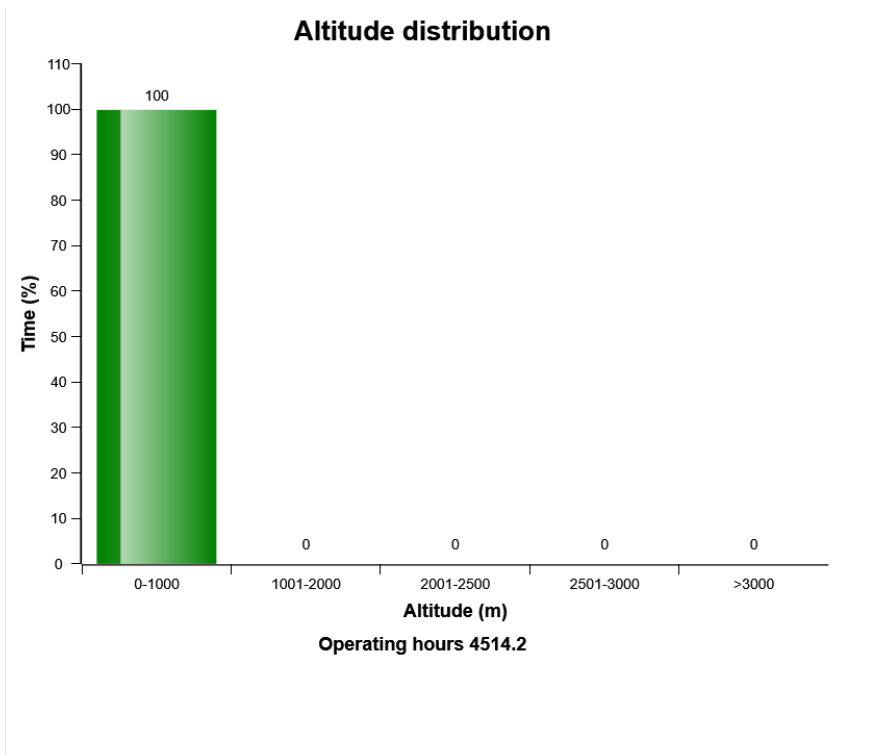
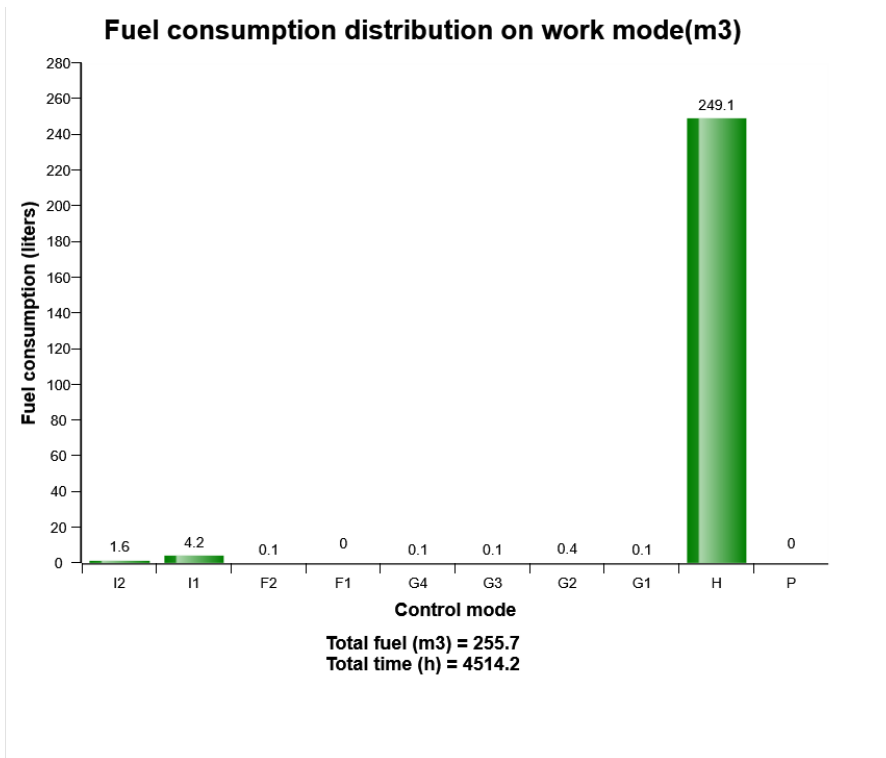
Average fuel consumption per work mode



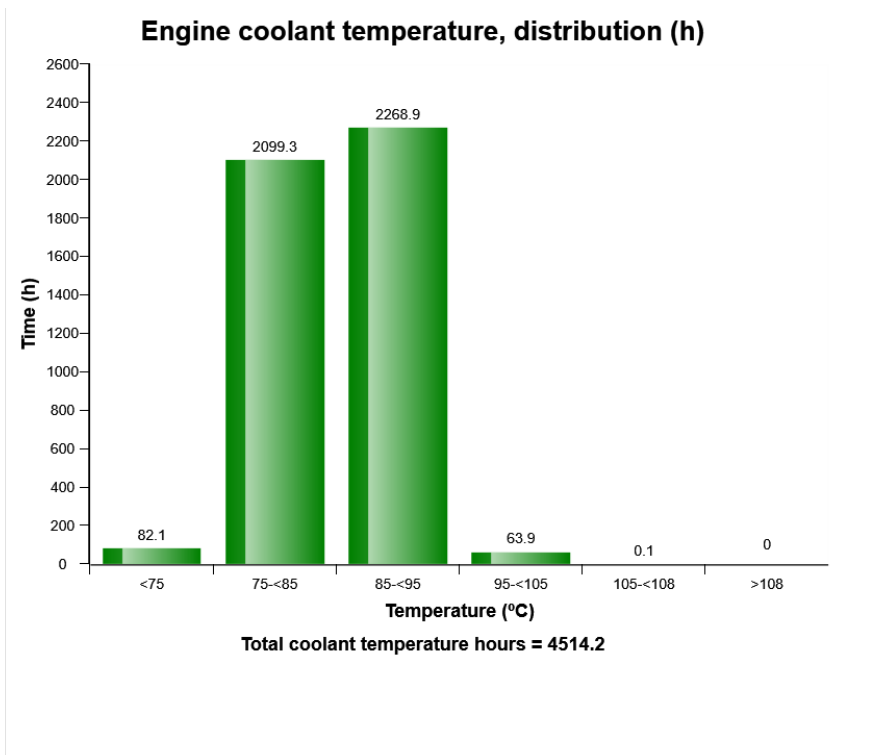
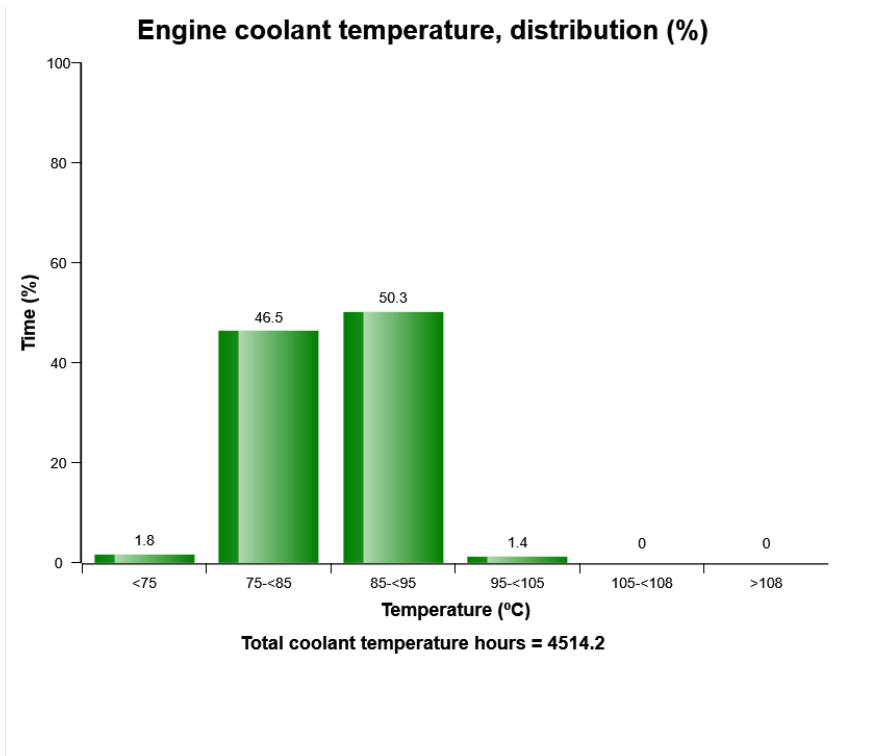
Fuel consumption (L/h) = 56.6
Amount of fuel used (m3) = 255.7



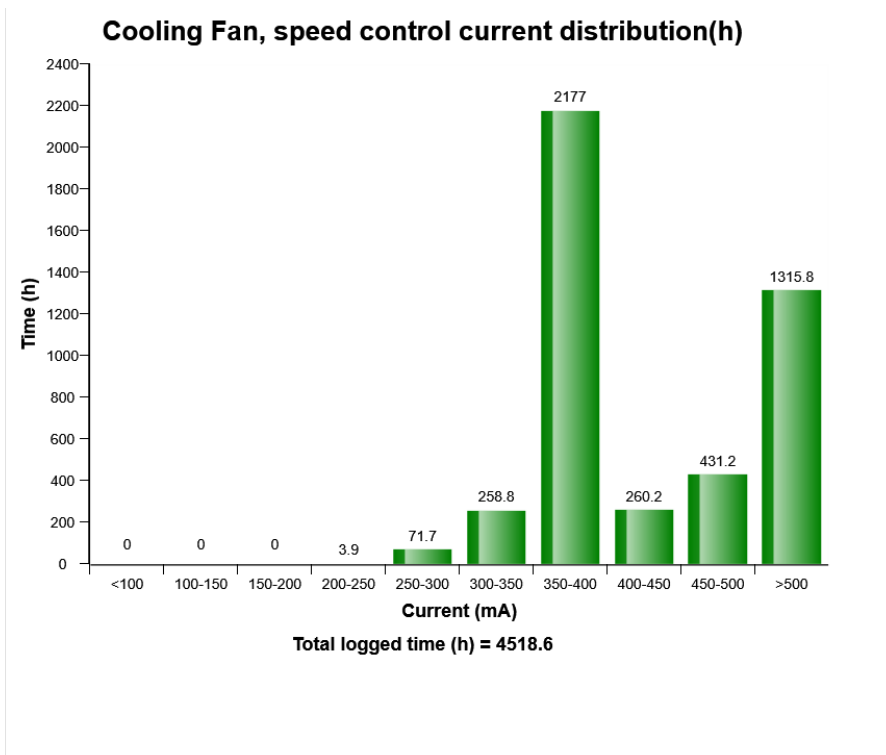
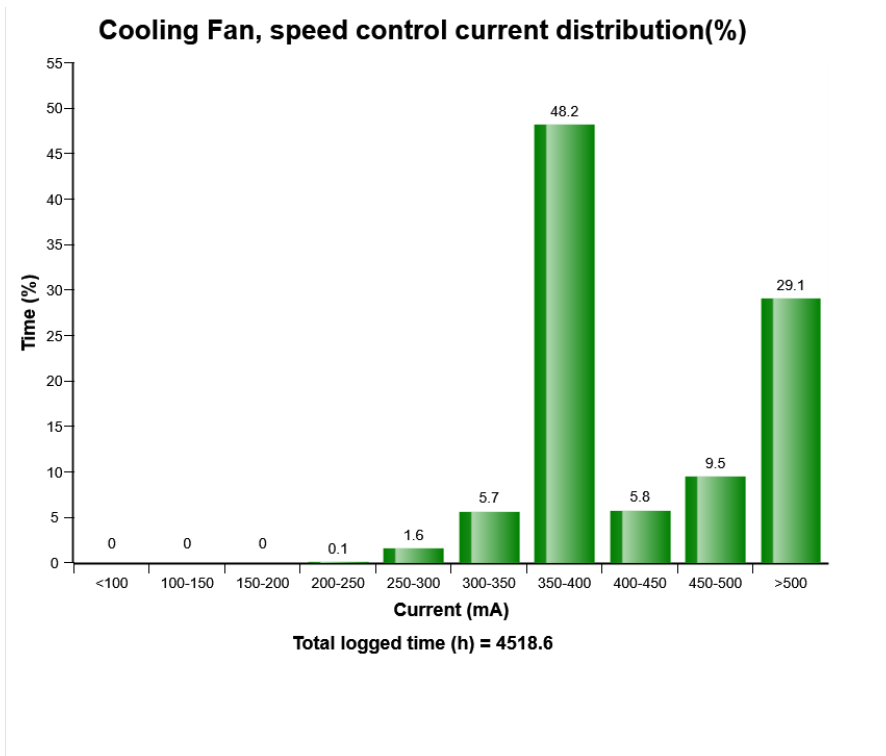
Machine model	SerialNo	Operating Hours	Reading Date
EC750E	310069	4518.5	03/12/2019



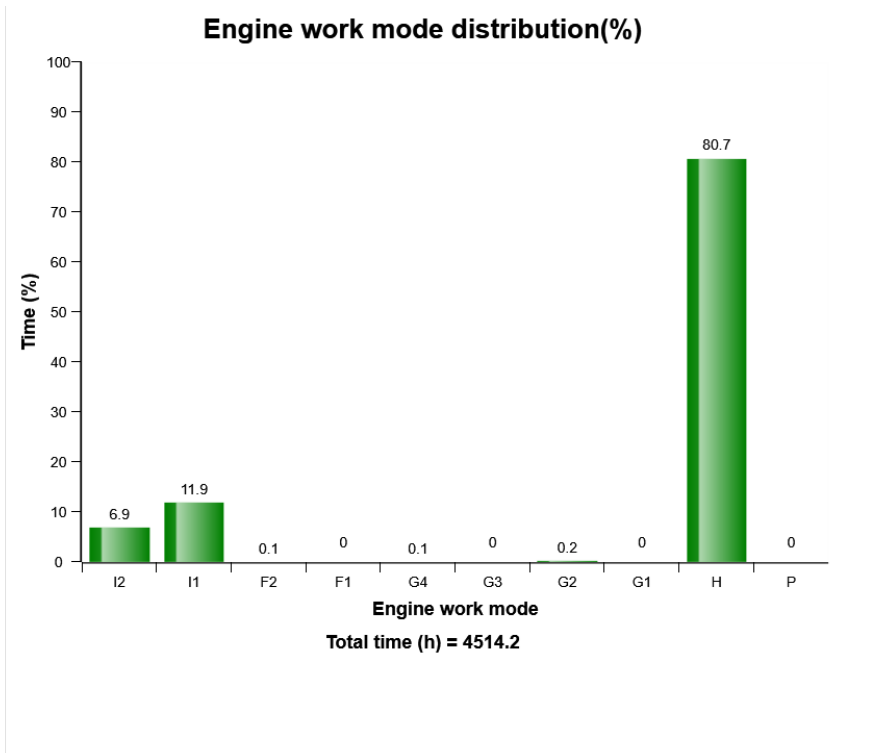
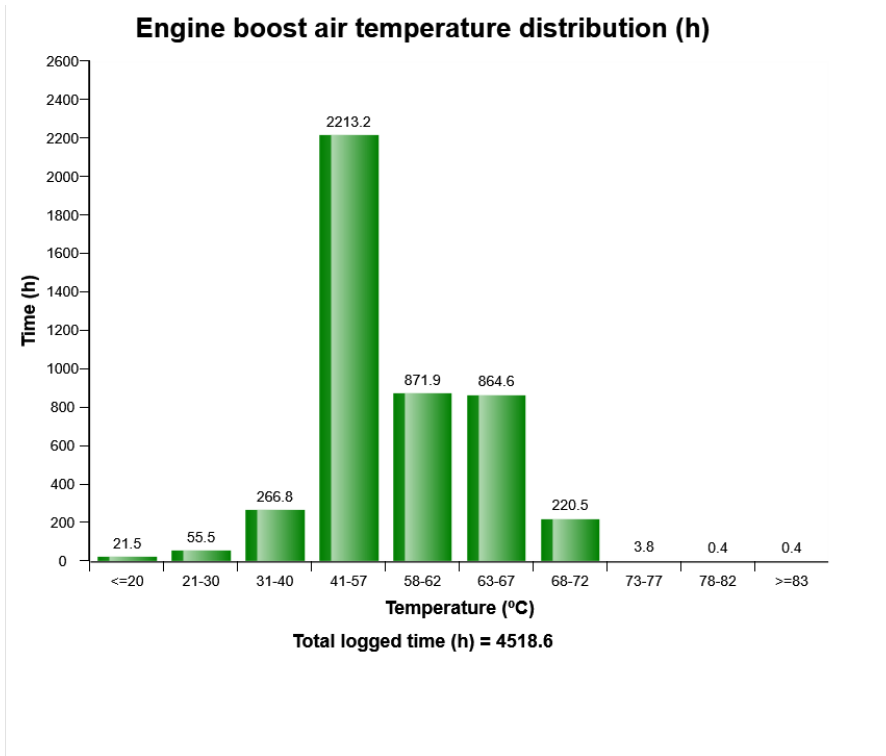
Machine model	SerialNo	Operating Hours	Reading Date
EC750E	310069	4518.5	03/12/2019



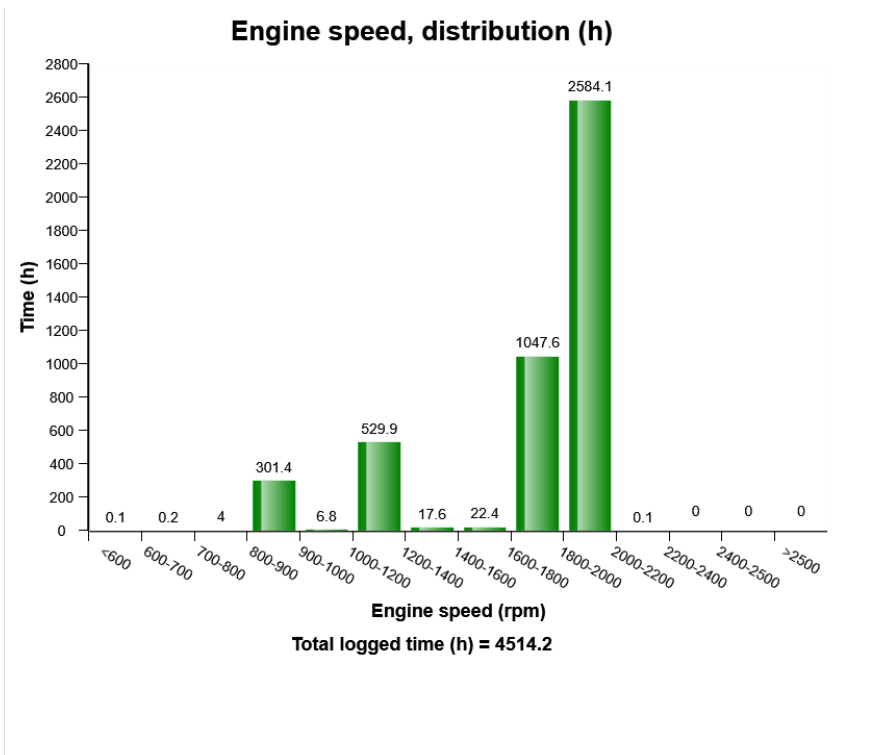
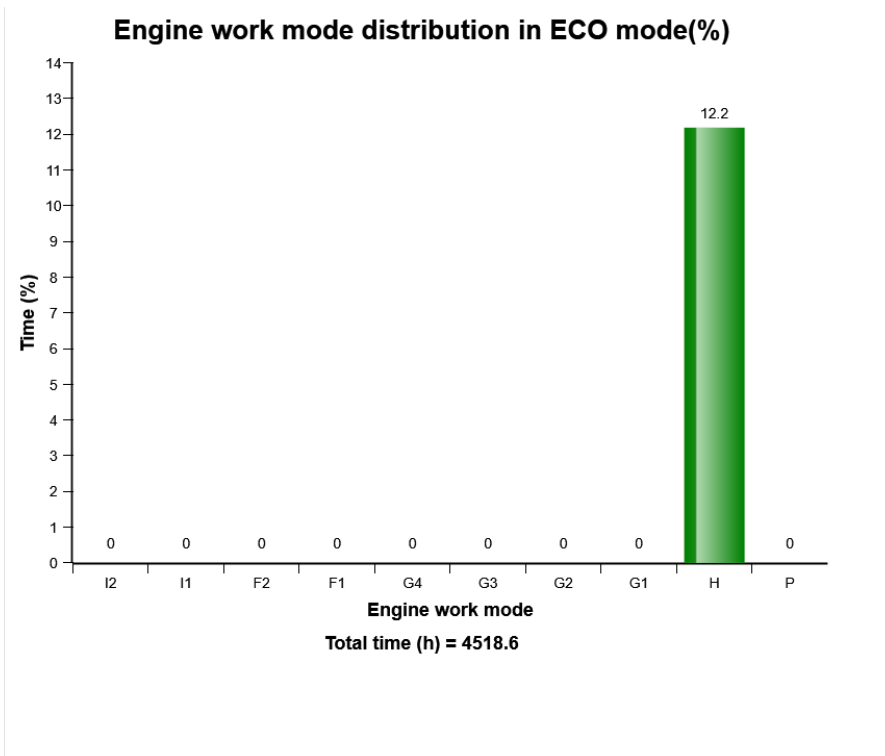
Machine model	SerialNo	Operating Hours	Reading Date
EC750E	310069	4518.5	03/12/2019



Machine model	SerialNo	Operating Hours	Reading Date
EC750E	310069	4518.5	03/12/2019

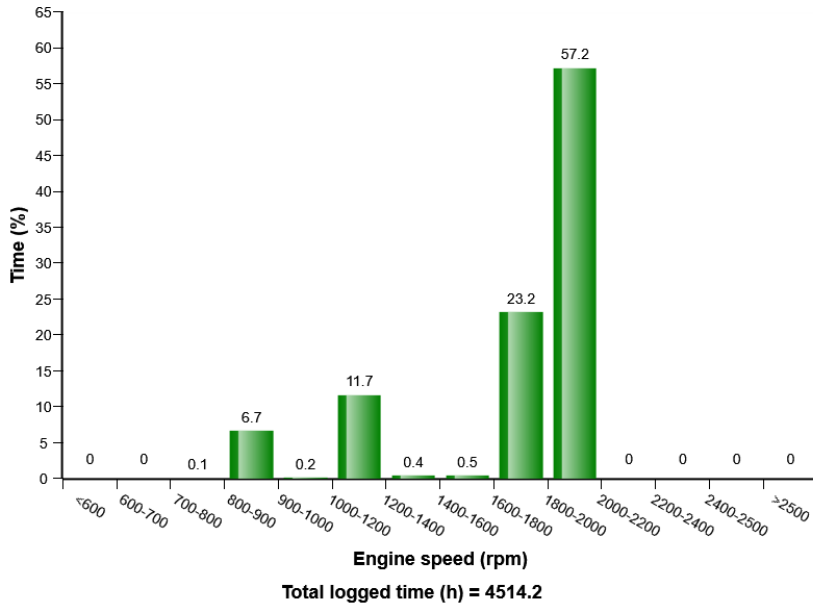


Machine model	SerialNo	Operating Hours	Reading Date
EC750E	310069	4518.5	03/12/2019

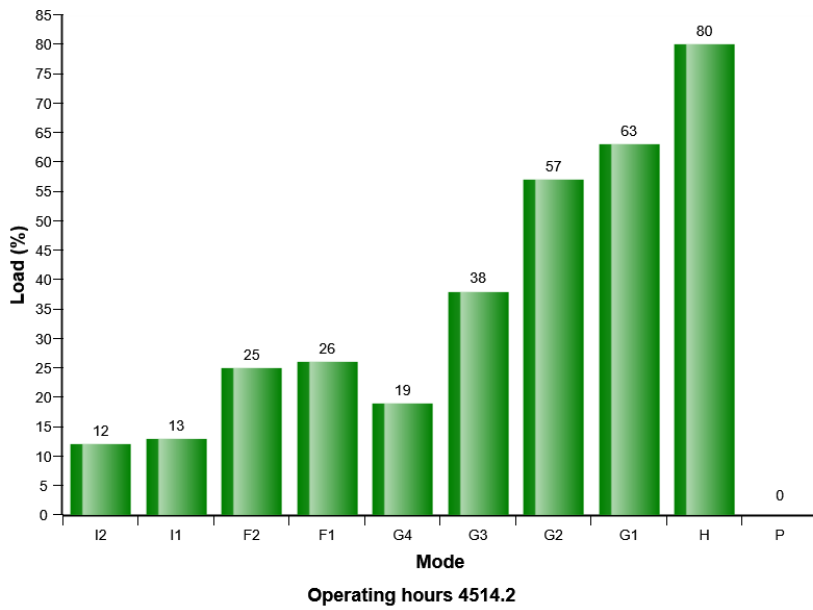


Machine model	SerialNo	Operating Hours	Reading Date
EC750E	310069	4518.5	03/12/2019

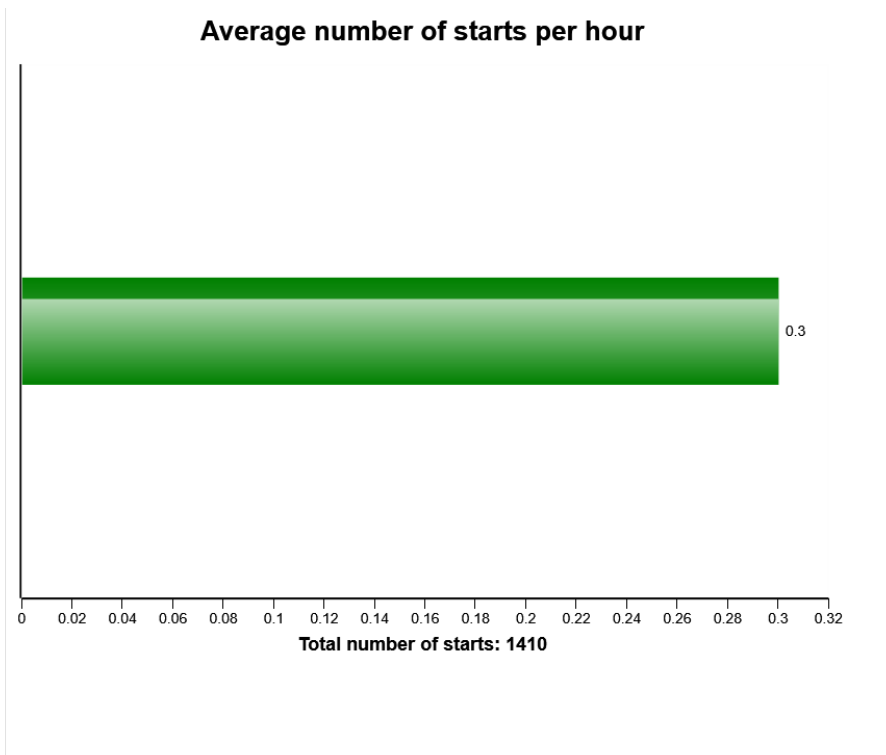
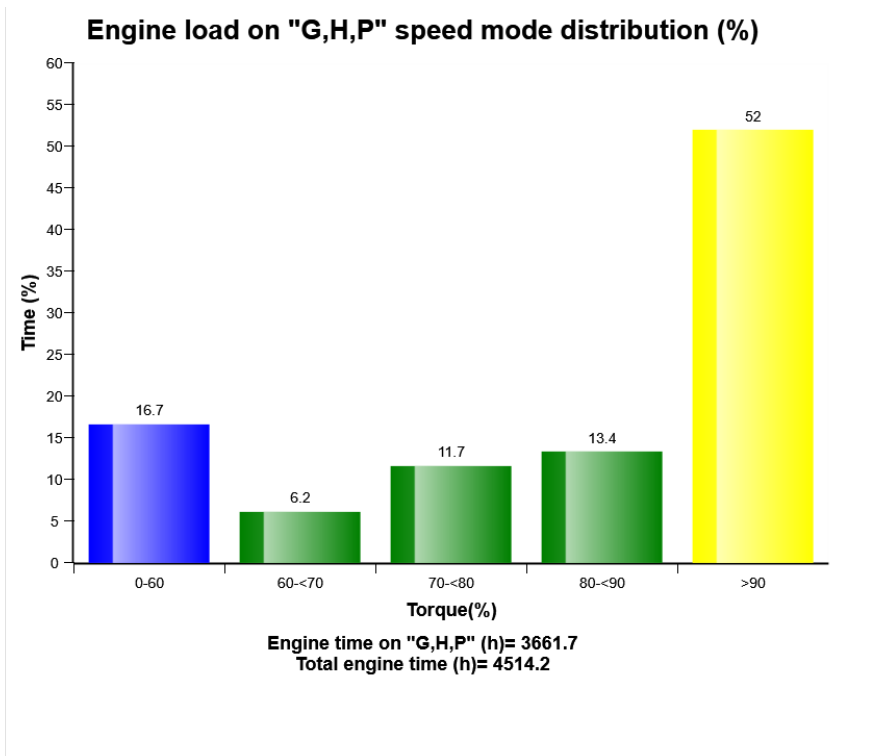
Engine speed, distribution (%)



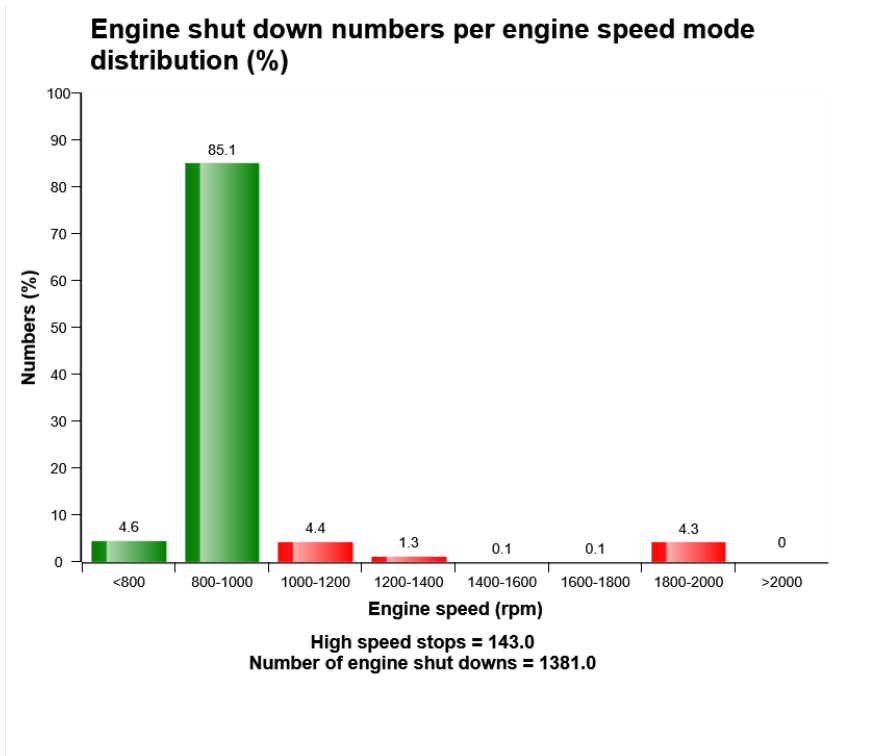
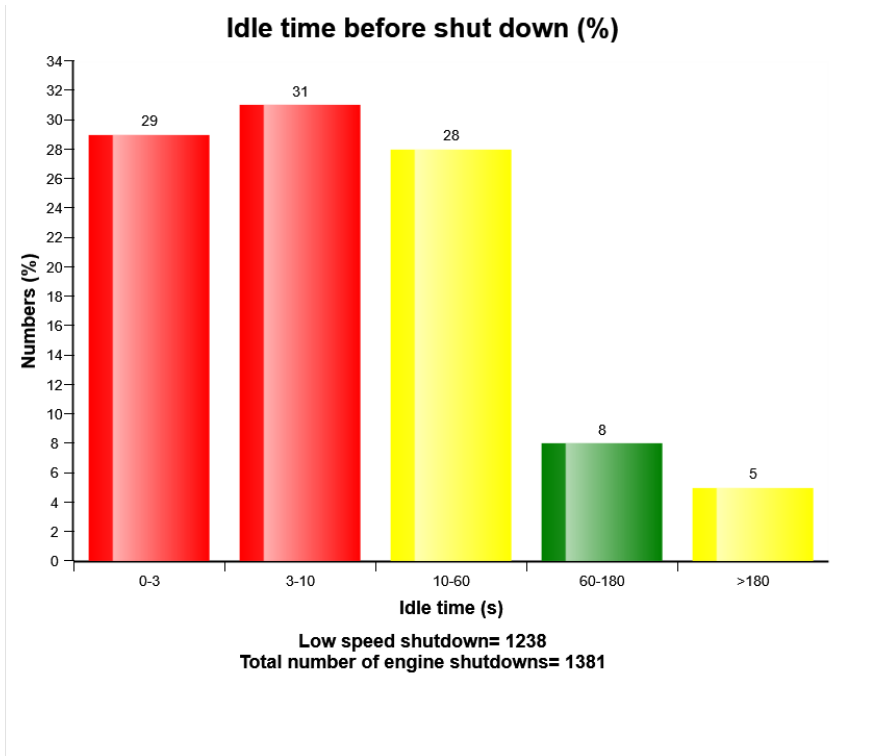
Average engine load per mode distribution (%)



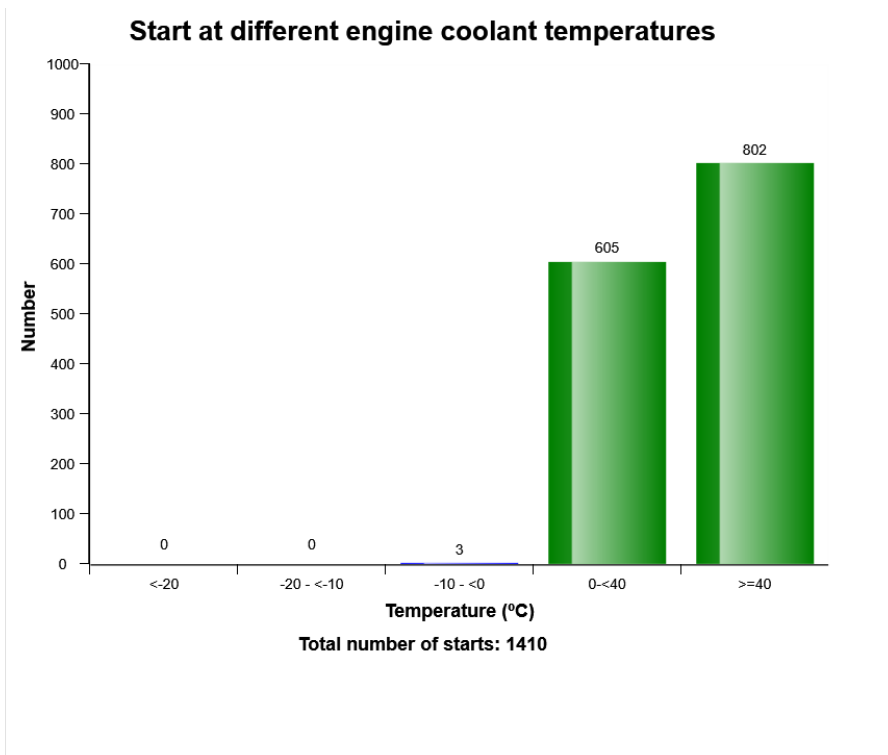
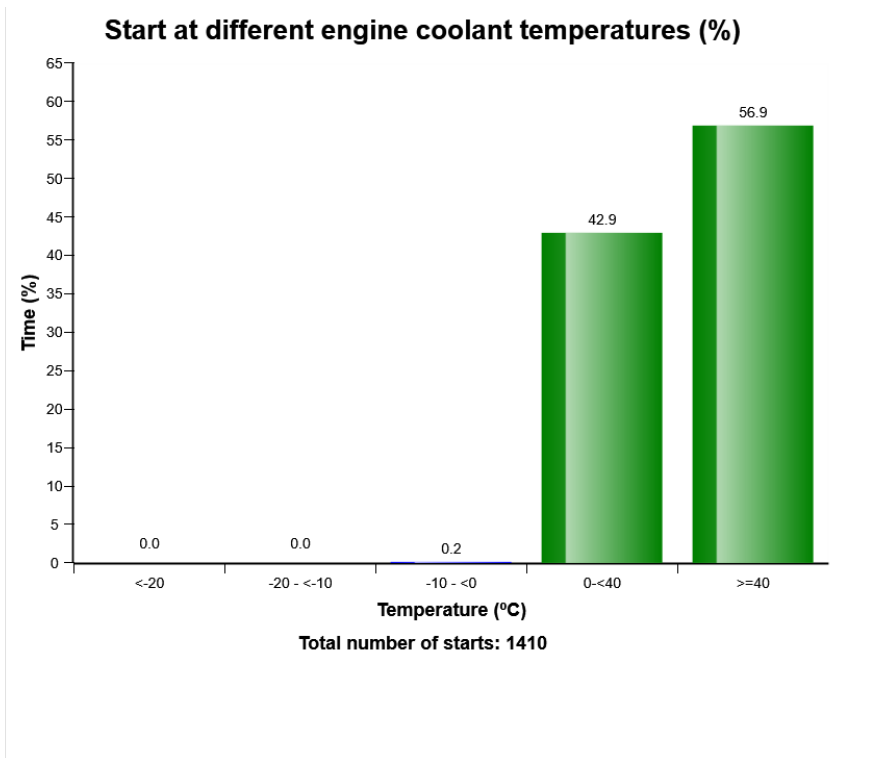
Machine model	SerialNo	Operating Hours	Reading Date
EC750E	310069	4518.5	03/12/2019



Machine model	SerialNo	Operating Hours	Reading Date
EC750E	310069	4518.5	03/12/2019



Machine model	SerialNo	Operating Hours	Reading Date
EC750E	310069	4518.5	03/12/2019



Machine model	SerialNo	Operating Hours	Reading Date
EC750E	310069	4518.5	03/12/2019

Low coolant level
Total number of occurrences = 192

	Op hours	Year	Month	Day	Hour	Minute
*	2614	2019	2	5	19	52
*	2615	2019	2	5	20	5
*	2617	2019	2	5	22	21
*	2618	2019	2	6	9	56
*	2618	2019	2	6	6	31
*	2619	2019	2	6	11	37
*	2650	2019	2	9	8	13
*	2663	2019	2	10	10	55
*	3204	2019	4	10	8	53
*	3204	2019	4	10	14	58
*	3204	2019	4	10	13	10
*	3204	2019	4	10	12	27
*	3204	2019	4	10	12	11
*	3204	2019	4	10	12	7
*	3204	2019	4	10	12	4
*	3256	2019	4	16	6	9
*	3256	2019	4	16	11	56
*	3256	2019	4	16	11	58
*	3256	2019	4	16	6	14
*	3256	2019	4	16	11	12



**Duration
(minutes)**

0
0
0
1
1
0
0
0
3
0
0
0
4
2
1
1
0
20
13
1



Machine model	SerialNo	Operating Hours	Reading Date
EC750E	310069	4518.5	03/12/2019

Fuel Filter Clogging
Total number Fuel filter clogging = 1

	Op hours	Year	Month	Day	Hour	Minute
*	2509	2019	1	28	8	3
*	0	2000	0	0	0	0
*	0	2000	0	0	0	0
*	0	2000	0	0	0	0
*	0	2000	0	0	0	0
*	0	2000	0	0	0	0
*	0	2000	0	0	0	0
*	0	2000	0	0	0	0
*	0	2000	0	0	0	0
*	0	2000	0	0	0	0
*	0	2000	0	0	0	0
*	0	2000	0	0	0	0
*	0	2000	0	0	0	0
*	0	2000	0	0	0	0
*	0	2000	0	0	0	0
*	0	2000	0	0	0	0
*	0	2000	0	0	0	0
*	0	2000	0	0	0	0
*	0	2000	0	0	0	0
*	0	2000	0	0	0	0
*	0	2000	0	0	0	0
*	0	2000	0	0	0	0
*	0	2000	0	0	0	0
*	0	2000	0	0	0	0



**Duration
(minutes)**

0

0

0

0

0

0

0

0

0

0

0

0

0

0

0

0

0

0

0

0



Machine model	SerialNo	Operating Hours	Reading Date
EC750E	310069	4518.5	03/12/2019

**Regeneration ignored
Total number of occurrences = 6**

	Op hours	Year	Month	Day	Hour	Minute
*	0	2000	0	0	0	0
*	0	2000	0	0	0	0
*	0	2000	0	0	0	0
*	0	2000	0	0	0	0
*	0	2000	0	0	0	0
*	0	2000	0	0	0	0
*	0	2000	0	0	0	0
*	0	2000	0	0	0	0
*	0	2000	0	0	0	0
*	0	2000	0	0	0	0
*	0	2000	0	0	0	0
*	0	2000	0	0	0	0
*	0	2000	0	0	0	0
*	0	2000	0	0	0	0
*	0	2000	0	0	0	0
*	0	2000	0	0	0	0
*	4103	2019	8	7	16	48
*	4104	2019	8	8	6	1
*	4104	2019	8	7	18	40
*	4116	2019	8	9	9	47
*	4120	2019	8	9	13	28
*	4130	2019	8	10	9	53



Duration (min)
0
0
0
0
0
0
0
0
0
0
0
0
0
0
0
0
0
0
0
60
15
2
1
201
99



Machine model	SerialNo	Operating Hours	Reading Date
EC750E	310069	4518.5	03/12/2019

Regeneration duration
Total number of occurrences = 4

	Op hours	Year	Month	Day	Hour	Minute
*	0	2000	0	0	0	0
*	0	2000	0	0	0	0
*	0	2000	0	0	0	0
*	0	2000	0	0	0	0
*	0	2000	0	0	0	0
*	0	2000	0	0	0	0
*	0	2000	0	0	0	0
*	0	2000	0	0	0	0
*	0	2000	0	0	0	0
*	0	2000	0	0	0	0
*	0	2000	0	0	0	0
*	0	2000	0	0	0	0
*	0	2000	0	0	0	0
*	0	2000	0	0	0	0
*	0	2000	0	0	0	0
*	0	2000	0	0	0	0
*	0	2000	0	0	0	0
*	0	2000	0	0	0	0
*	0	2000	0	0	0	0
*	0	2000	0	0	0	0
*	0	2000	0	0	0	0
*	4104	2019	8	8	6	16
*	4116	2019	8	9	9	48
*	4123	2019	8	9	16	49
*	4132	2019	8	10	11	32



**Duration
(min)**

0
0
0
0
0
0
0
0
0
0
0
0
0
0
0
0
0
0
0
0
0
50
49
48
48



Machine model	SerialNo	Operating Hours	Reading Date
EC750E	310069	4518.5	03/12/2019

Water level warning in water separator
Total number of occurrences = 841

	Op hours	Year	Month	Day	Hour	Minute
*	2726	2019	2	18	8	13
*	2726	2019	2	18	8	21
*	2726	2019	2	18	8	26
*	2726	2019	2	18	8	33
*	2726	2019	2	18	8	38
*	2726	2019	2	18	8	41
*	2726	2019	2	18	8	44
*	2727	2019	2	18	8	58
*	2727	2019	2	18	9	45
*	2727	2019	2	18	9	41
*	2727	2019	2	18	8	53
*	2728	2019	2	18	9	56
*	2728	2019	2	18	9	47
*	2728	2019	2	18	9	49
*	2728	2019	2	18	9	53
*	2728	2019	2	18	12	28
*	2730	2019	2	18	14	59
*	2730	2019	2	18	15	8
*	2730	2019	2	18	15	6
*	2731	2019	2	18	15	12



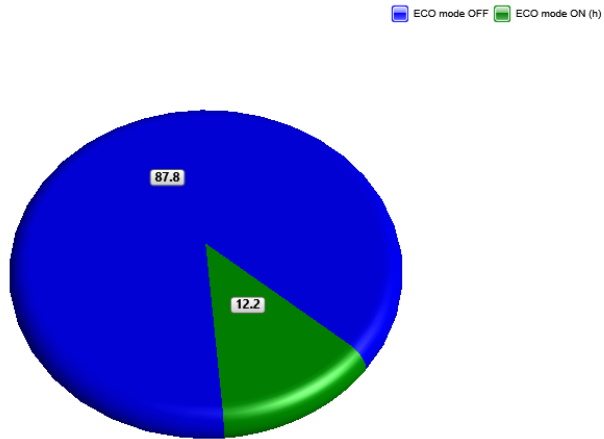
**Duration
(min)**

2
0
0
0
0
1
3
41
0
2
4
10
0
2
1
149
6
2
1
50



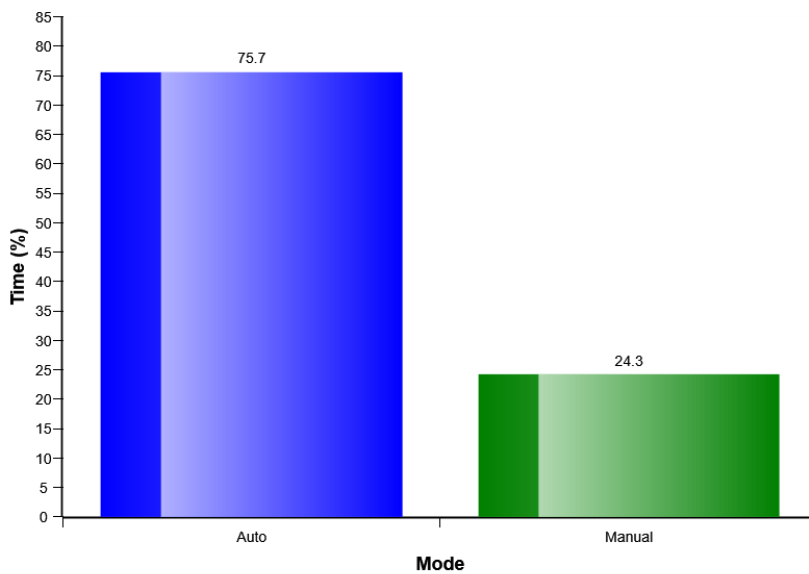
Machine model	SerialNo	Operating Hours	Reading Date
EC750E	310069	4518.5	03/12/2019

ECO mode distribution (%)



Total engine time (h) = 4518.6

HVAC Auto - Manual mode selection distribution (%)

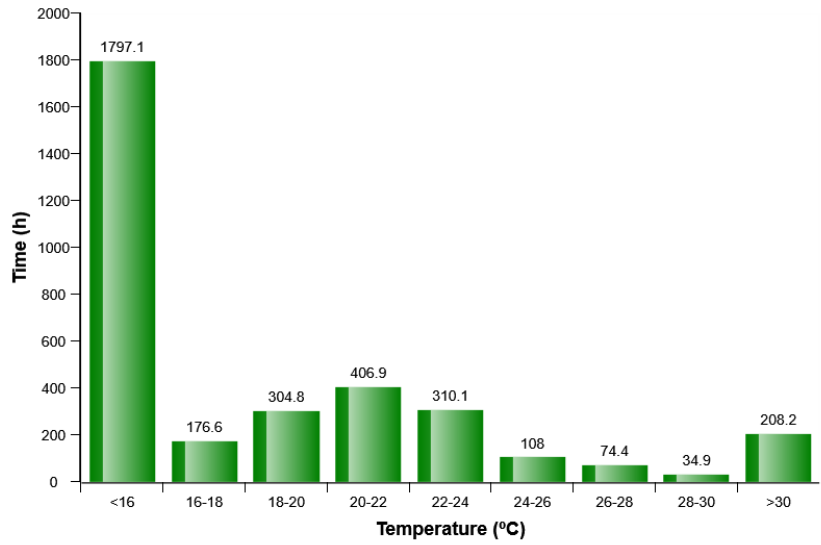


Total logged time (h) = 4518.0

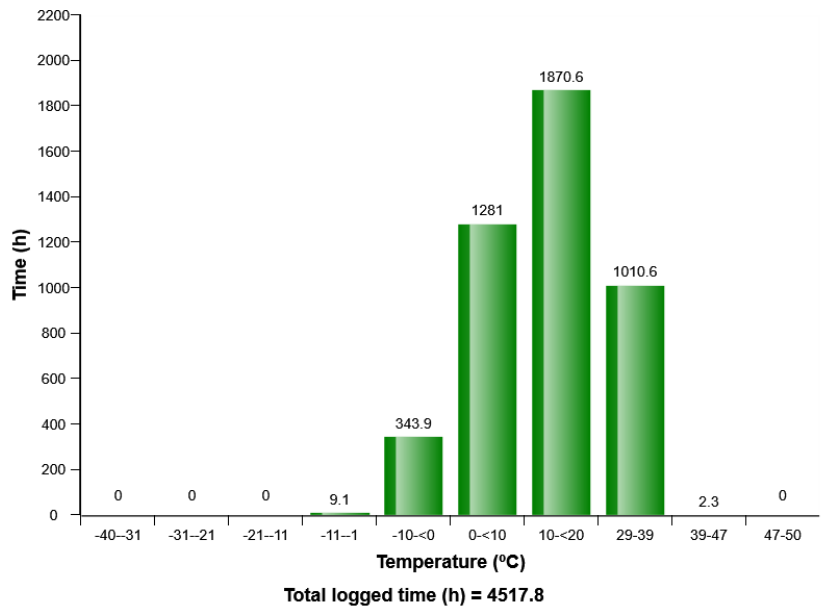


Machine model	SerialNo	Operating Hours	Reading Date
EC750E	310069	4518.5	03/12/2019

HVAC air temperature setting in auto control mode distribution (h)

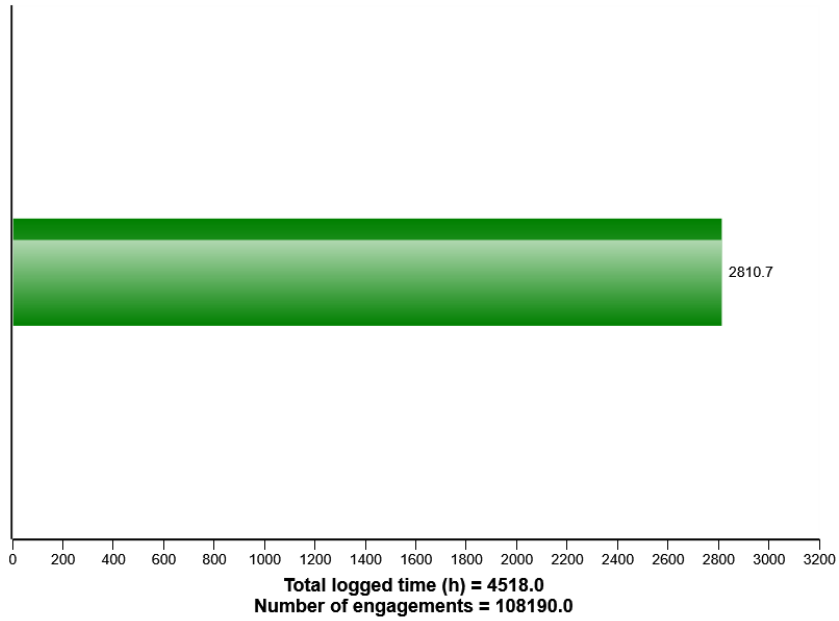


Machine ambient temperature distribution (h)

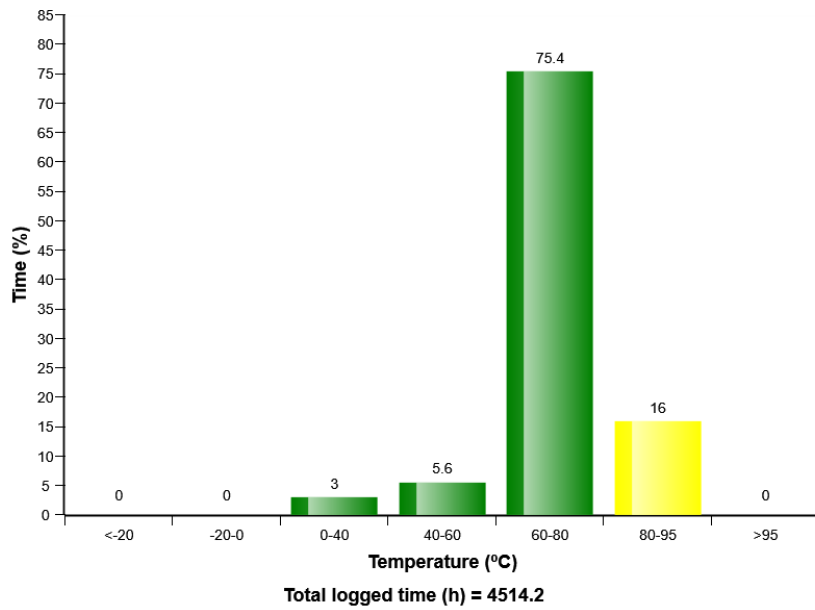


Machine model	SerialNo	Operating Hours	Reading Date
EC750E	310069	4518.5	03/12/2019

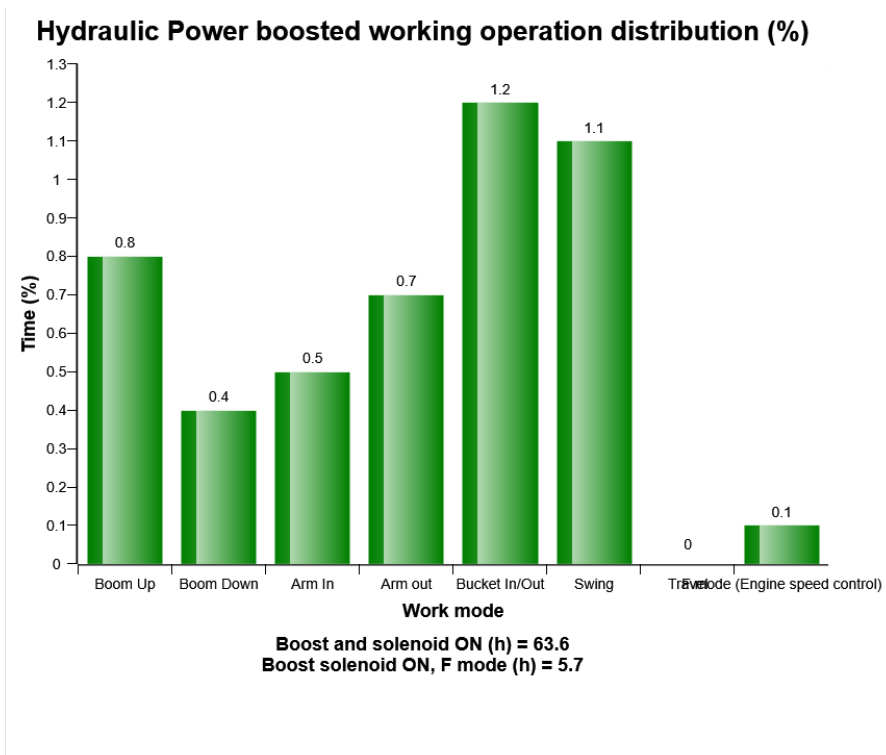
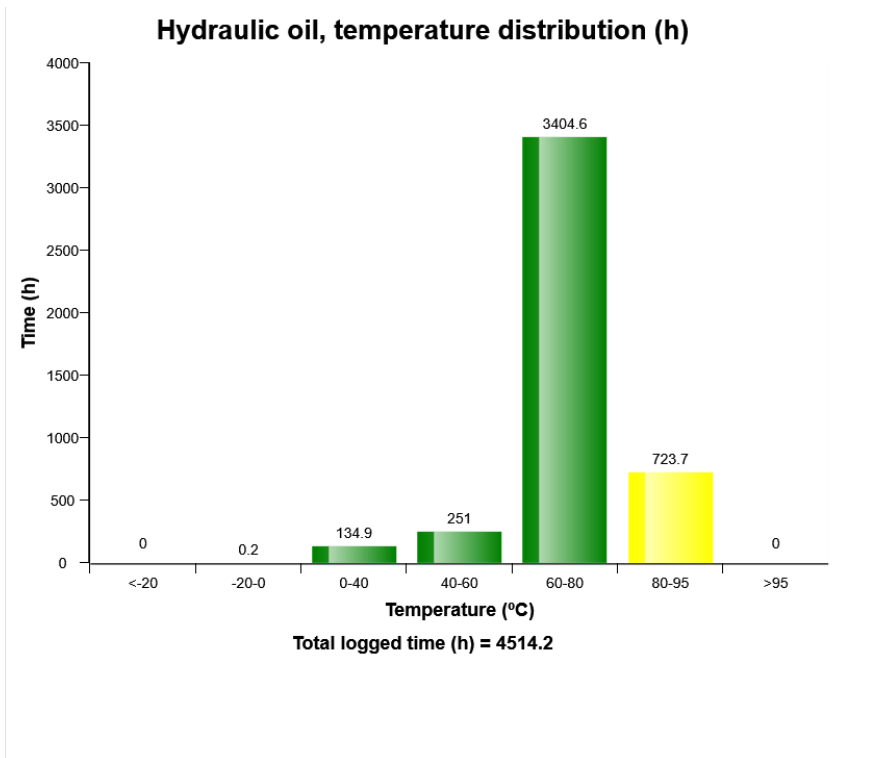
AC Compressor usage



Hydraulic oil, temperature distribution (%)

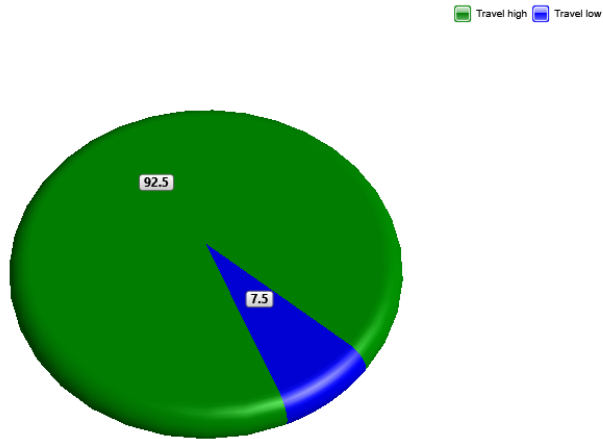


Machine model	SerialNo	Operating Hours	Reading Date
EC750E	310069	4518.5	03/12/2019



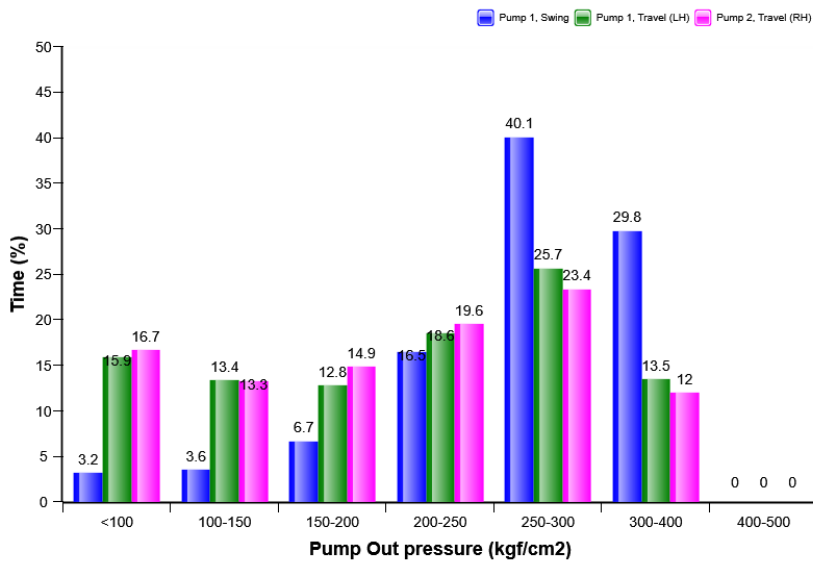
Machine model	SerialNo	Operating Hours	Reading Date
EC750E	310069	4518.5	03/12/2019

Travel speed, high/low (%)



Total travel time (h) = 287.6
 Travel time / Operating hours (%) = 6.4

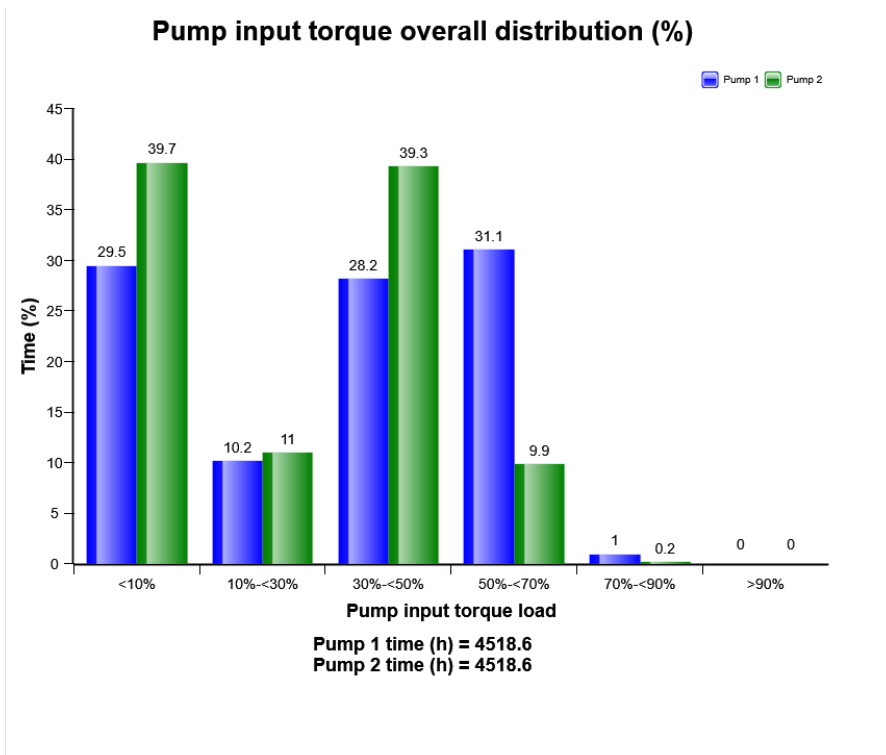
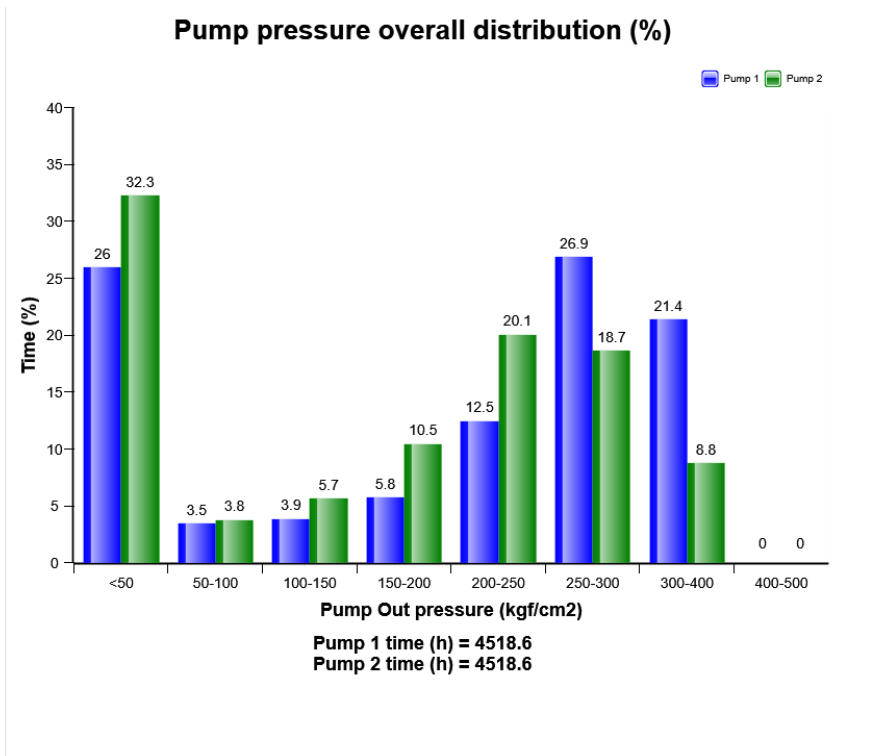
Pump pressure on travel and swing distribution (%)



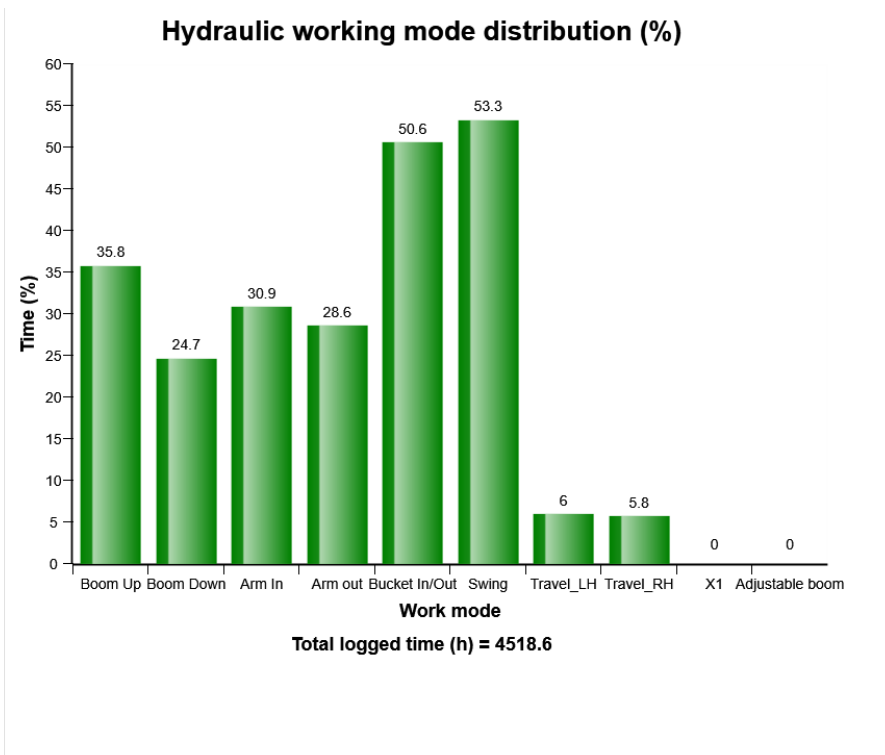
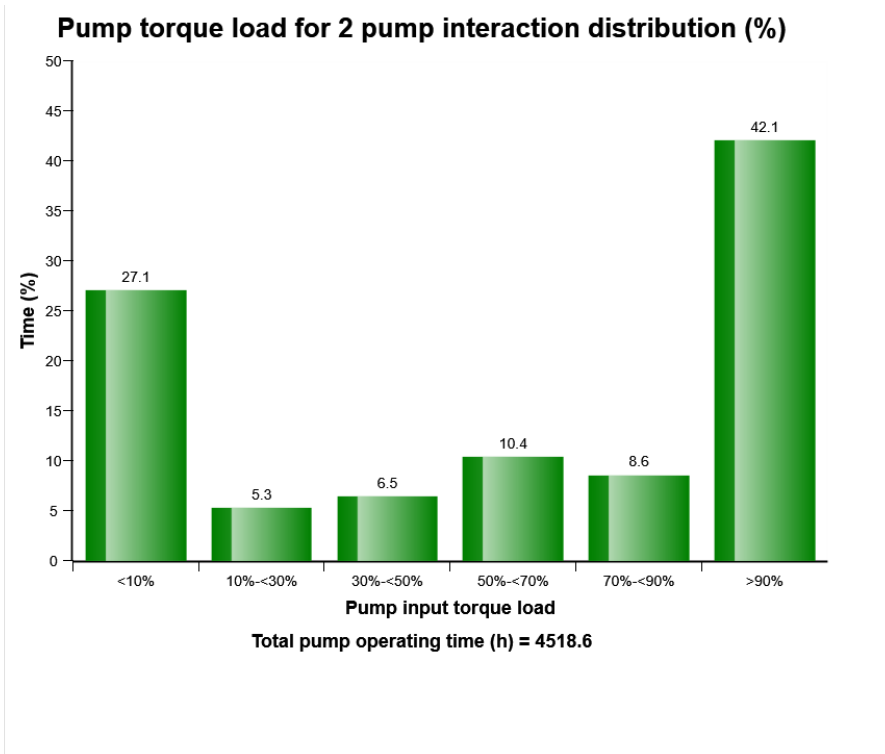
Swing time (h) = 2540.3
 Travel (RH) time (h) = 262.6



Machine model	SerialNo	Operating Hours	Reading Date
EC750E	310069	4518.5	03/12/2019

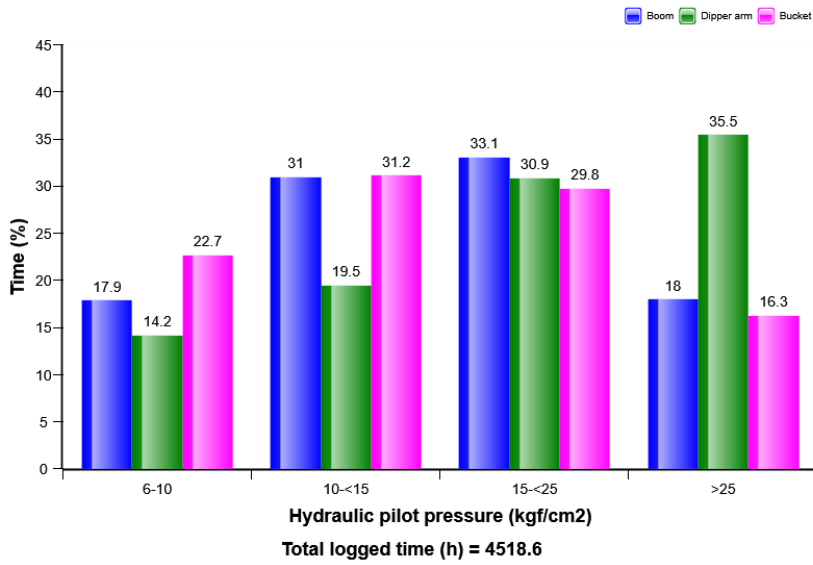


Machine model	SerialNo	Operating Hours	Reading Date
EC750E	310069	4518.5	03/12/2019

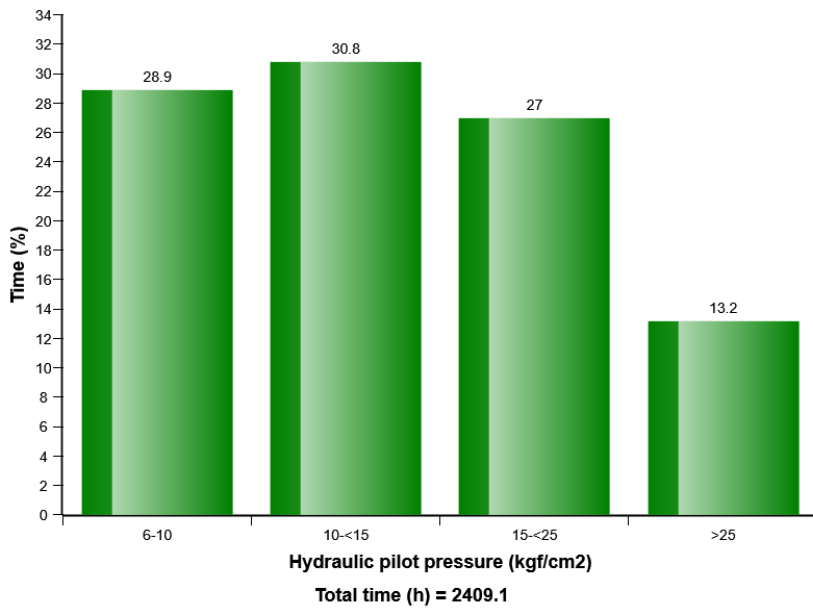


Machine model	SerialNo	Operating Hours	Reading Date
EC750E	310069	4518.5	03/12/2019

Hydraulic pilot pressure on bucket, boom and arm operation distribution (%)



Hydraulic pilot pressure on swing operation distribution (%)



Machine model	SerialNo	Operating Hours	Reading Date
EC750E	310069	4518.5	03/12/2019

