

VOLVO CONSTRUCTION EQUIPMENT MATRIS REPORT

Machine model L70H	SerialNo 622900	Operating Hours 2722.2	Reading Date 18/11/2019
Company name AAS	Dealer	Report Issuer	
Contact name	Technician cptacek	Primary Application Hard Virgin Bank	
Site	Workorder	Ground Condition	

MATRIS Reading, Summary / Recommendation



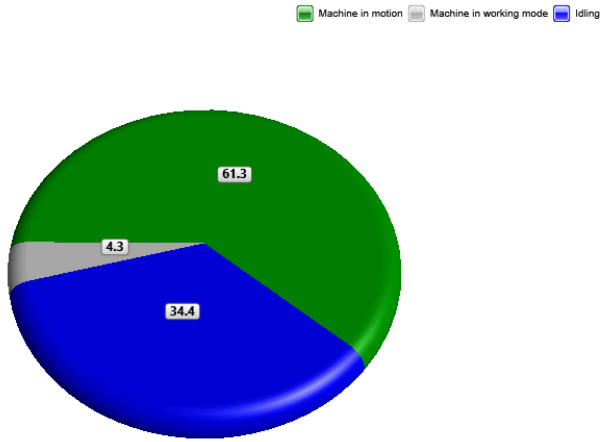
Machine model	SerialNo	Operating Hours	Reading Date
L70H	622900	2722.2	18/11/2019

Main equipment	Type	Equipment
	Tyre size/class	
	Main Attachment	
	Extra Counterweight	
	Ballast	
	Chains	
	Boom Suspension System	
	Attachment Interface	
	Volume m3 (yd3) / Area m2 (ft2)	
	Attachment make	



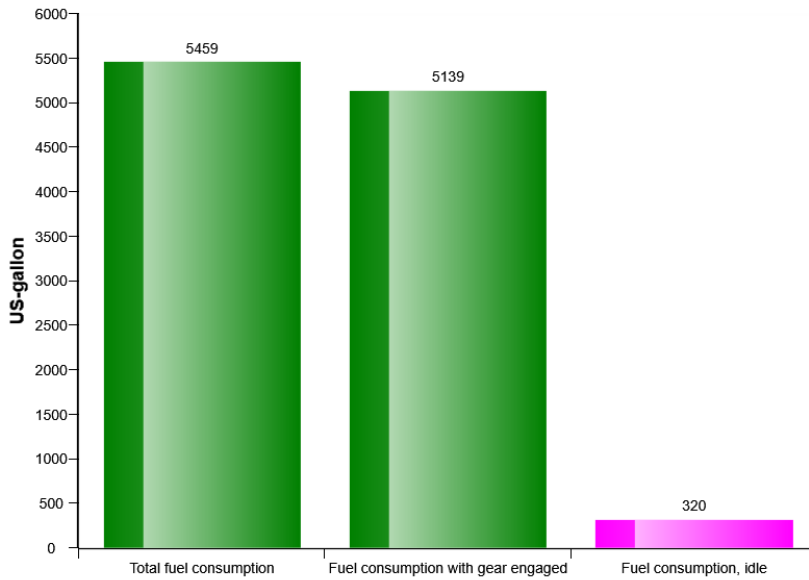
Machine model	SerialNo	Operating Hours	Reading Date
L70H	622900	2722.2	18/11/2019

Machine utilization (%)



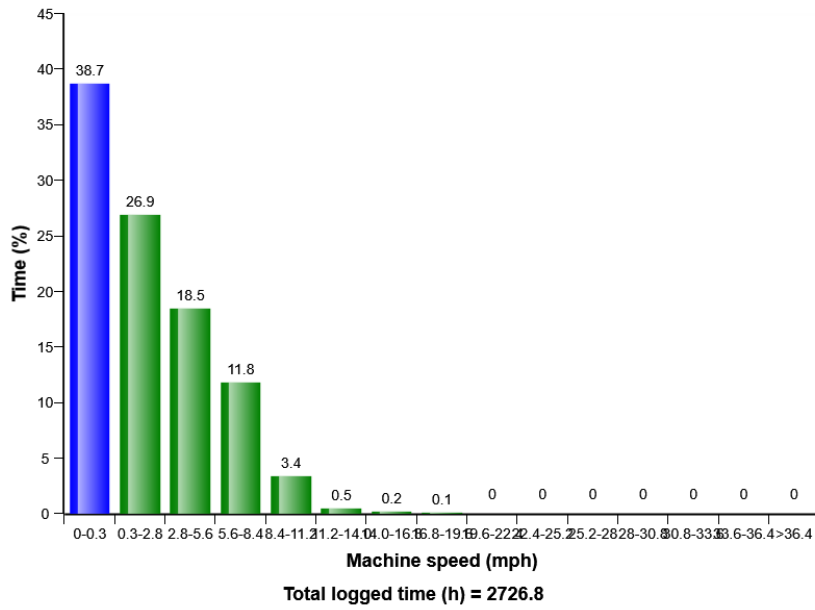
Total time (h) = 2726.8

Fuel consumption

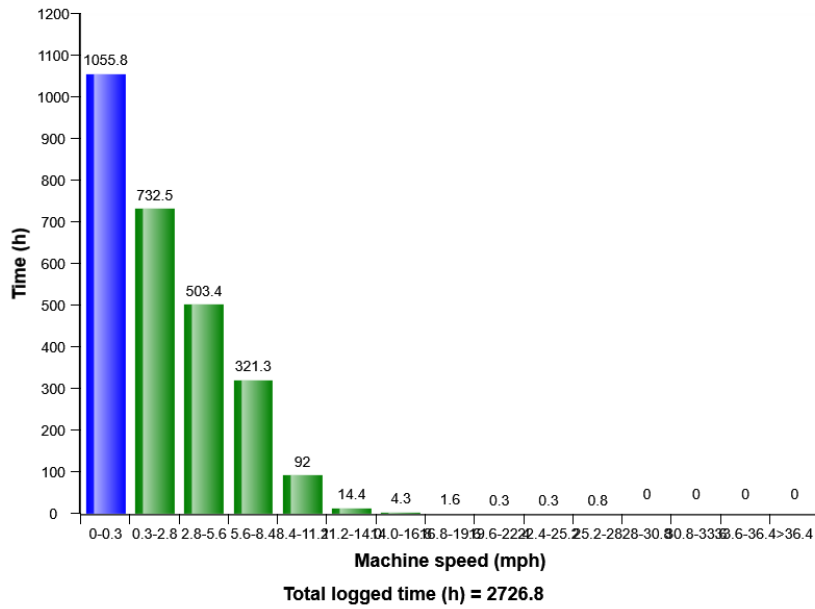


Machine model	SerialNo	Operating Hours	Reading Date
L70H	622900	2722.2	18/11/2019

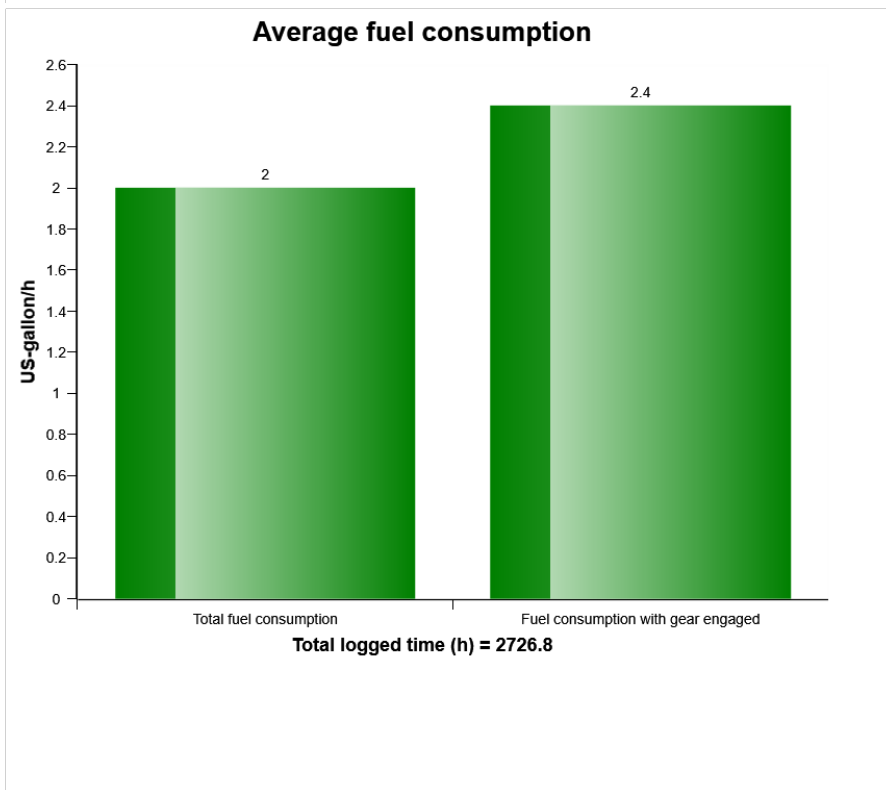
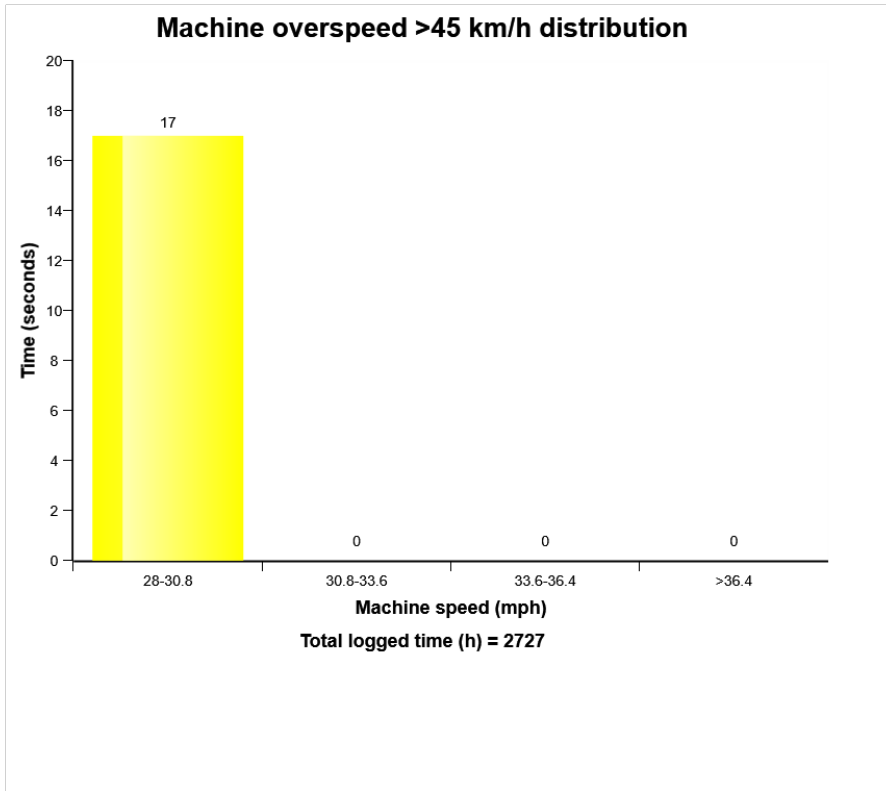
Machine speed, distribution (%)



Machine speed, distribution

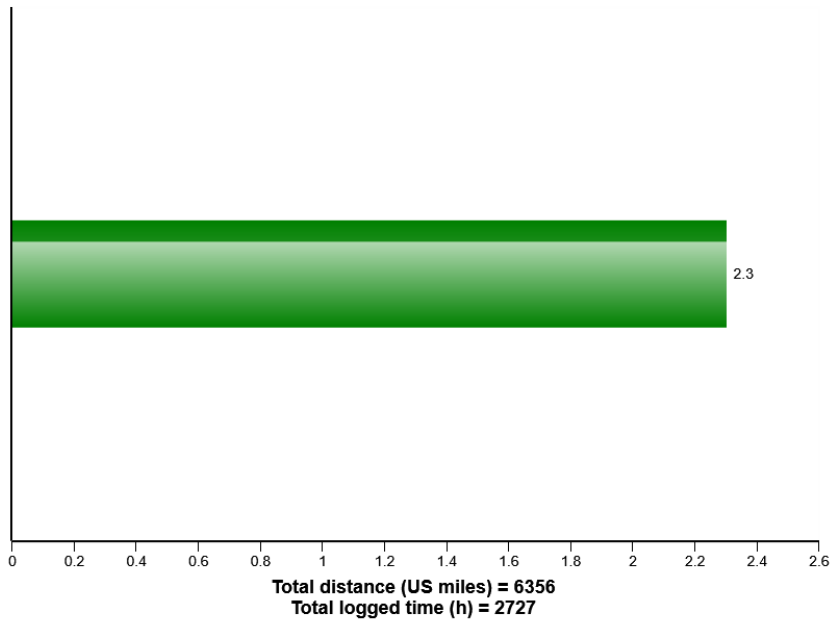


Machine model	SerialNo	Operating Hours	Reading Date
L70H	622900	2722.2	18/11/2019

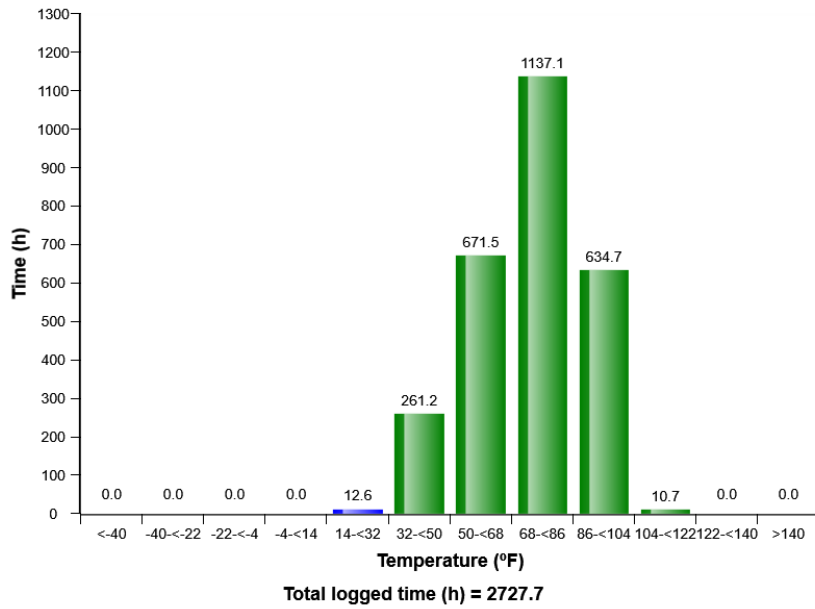


Machine model	SerialNo	Operating Hours	Reading Date
L70H	622900	2722.2	18/11/2019

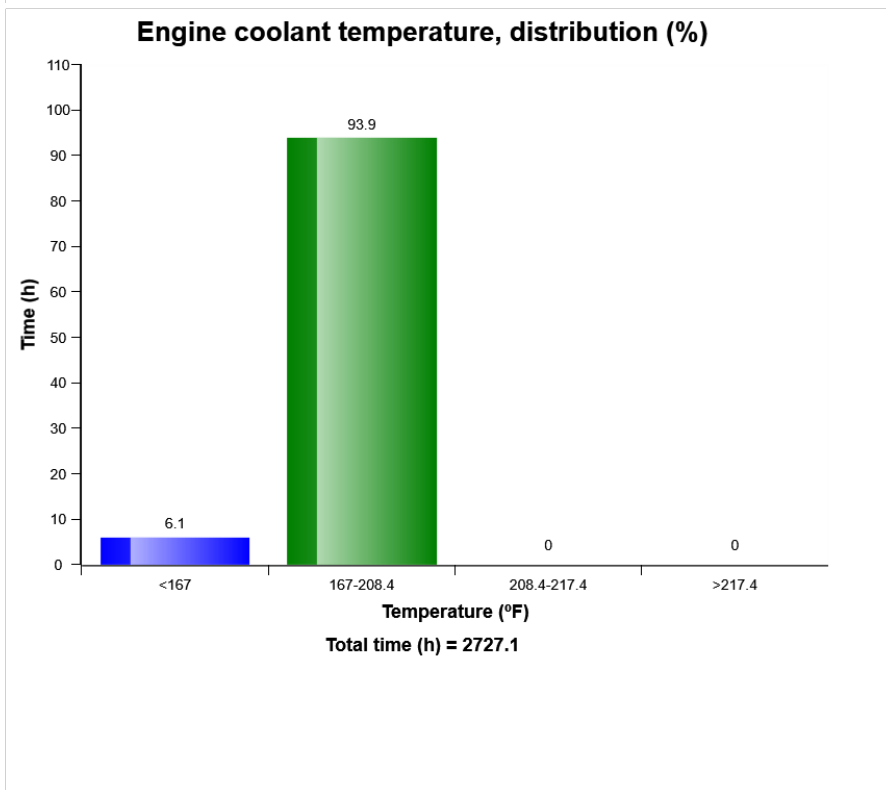
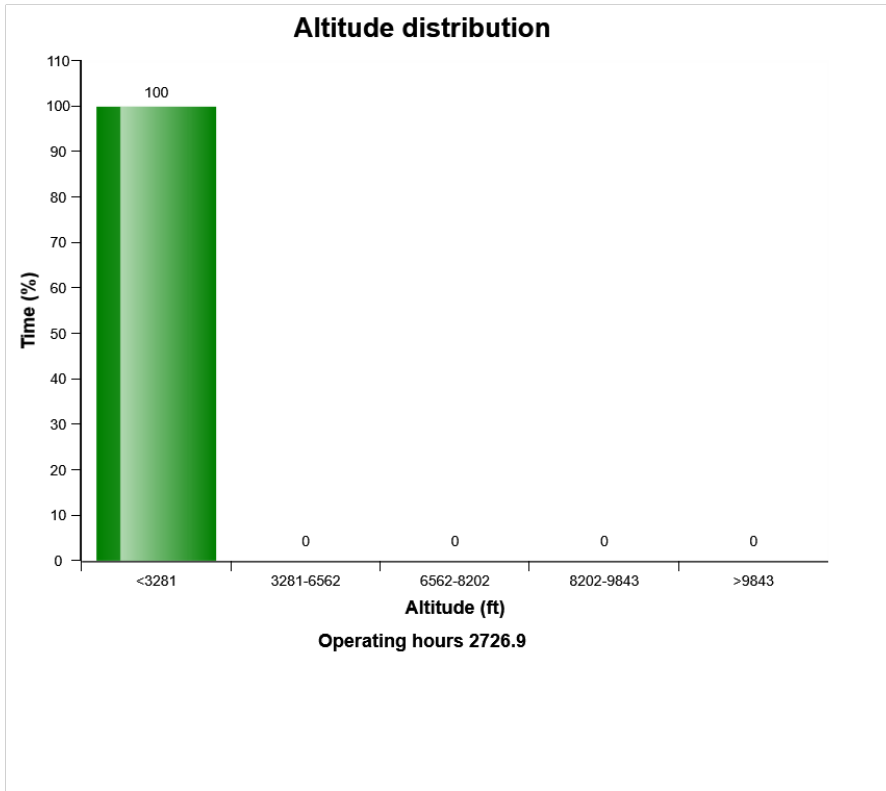
Average speed and distance



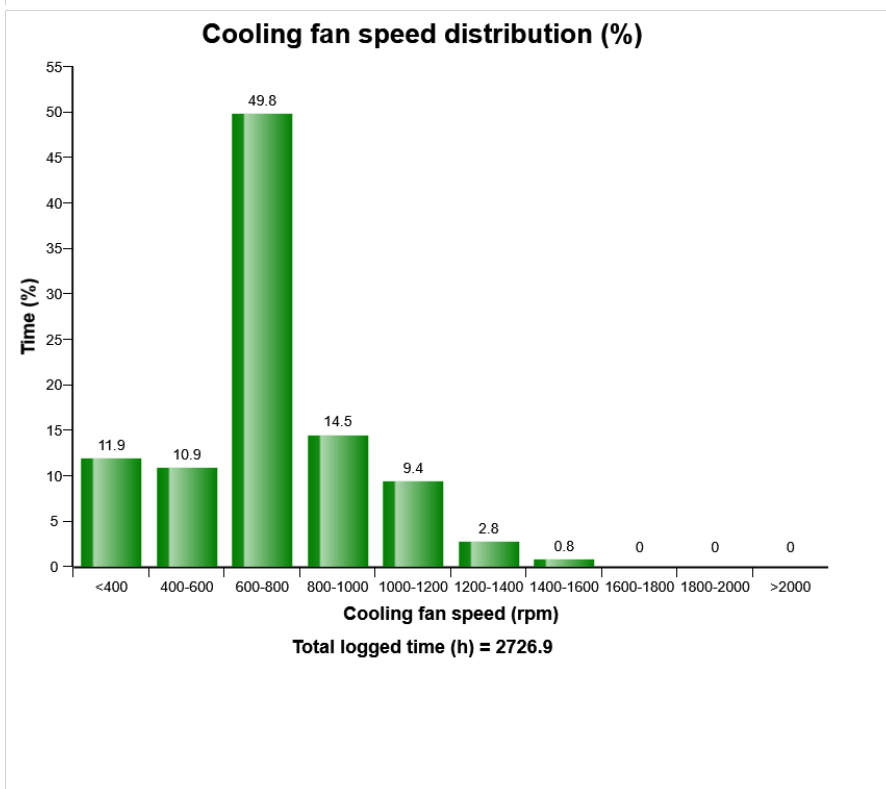
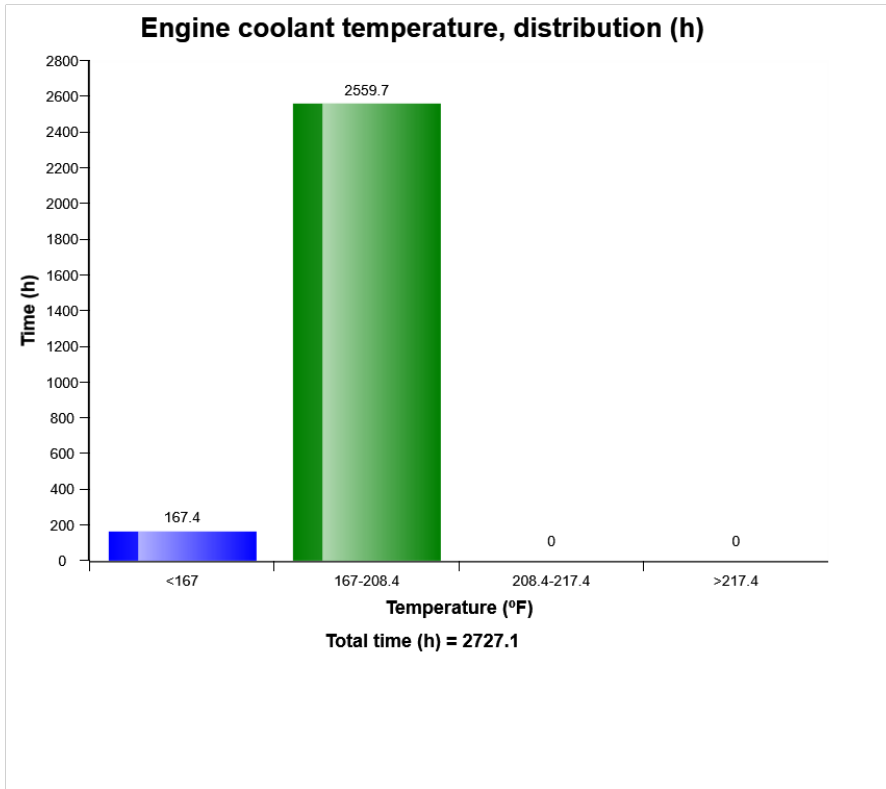
Machine ambient temperature distribution (h)



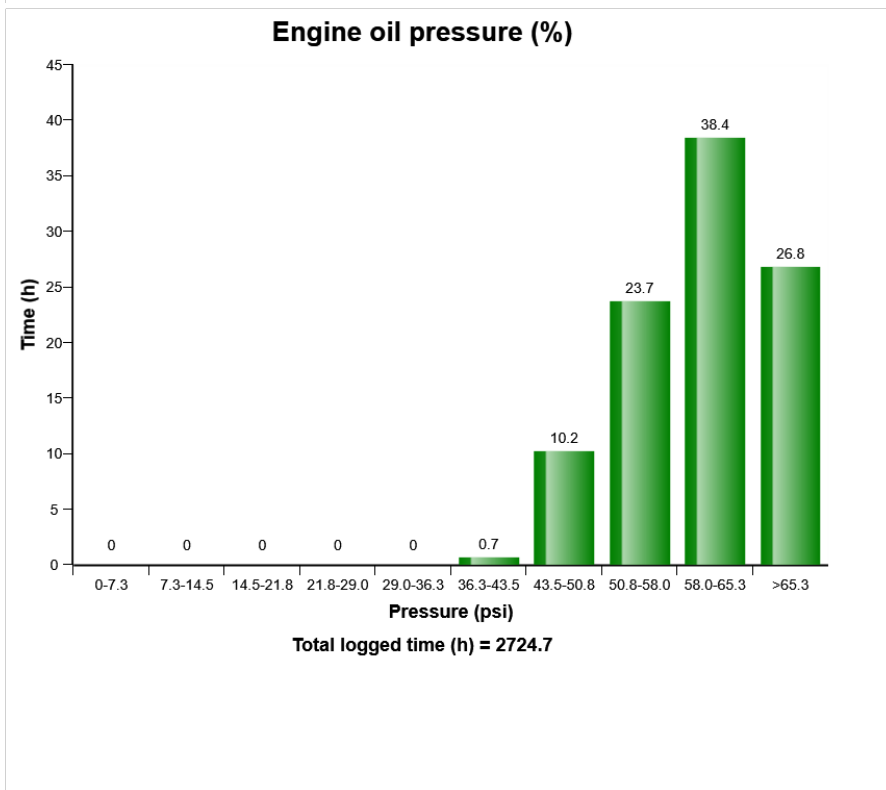
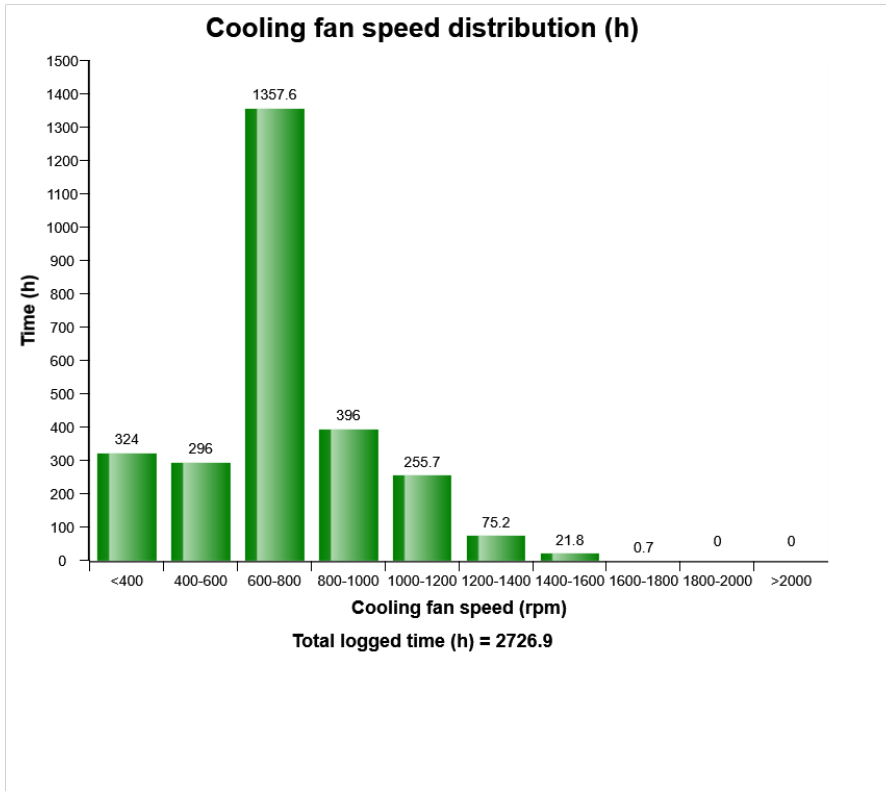
Machine model	SerialNo	Operating Hours	Reading Date
L70H	622900	2722.2	18/11/2019



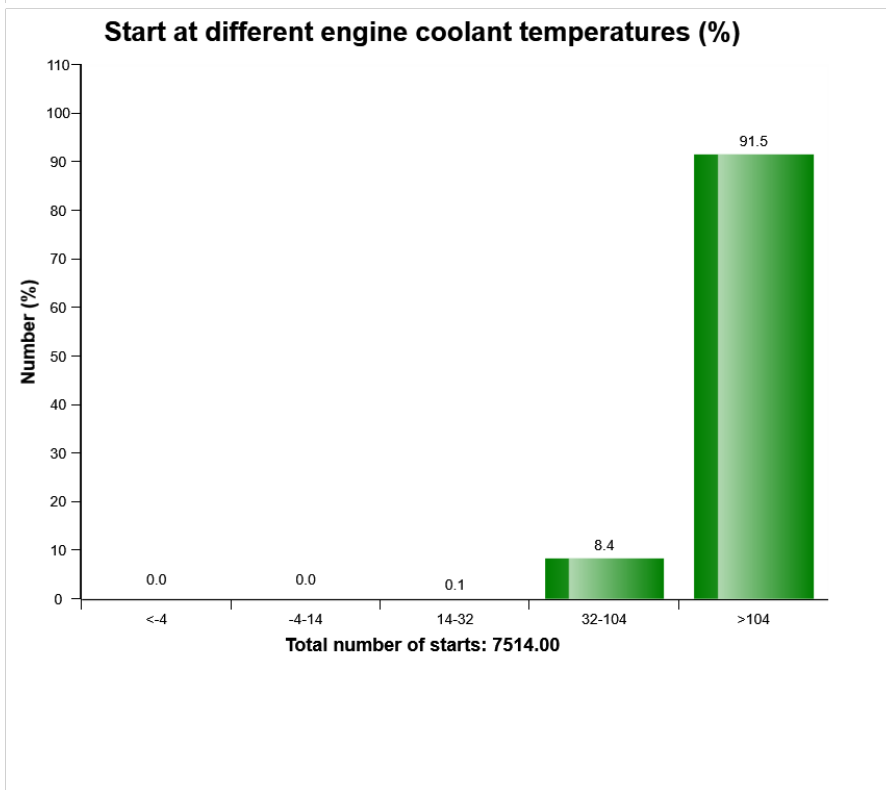
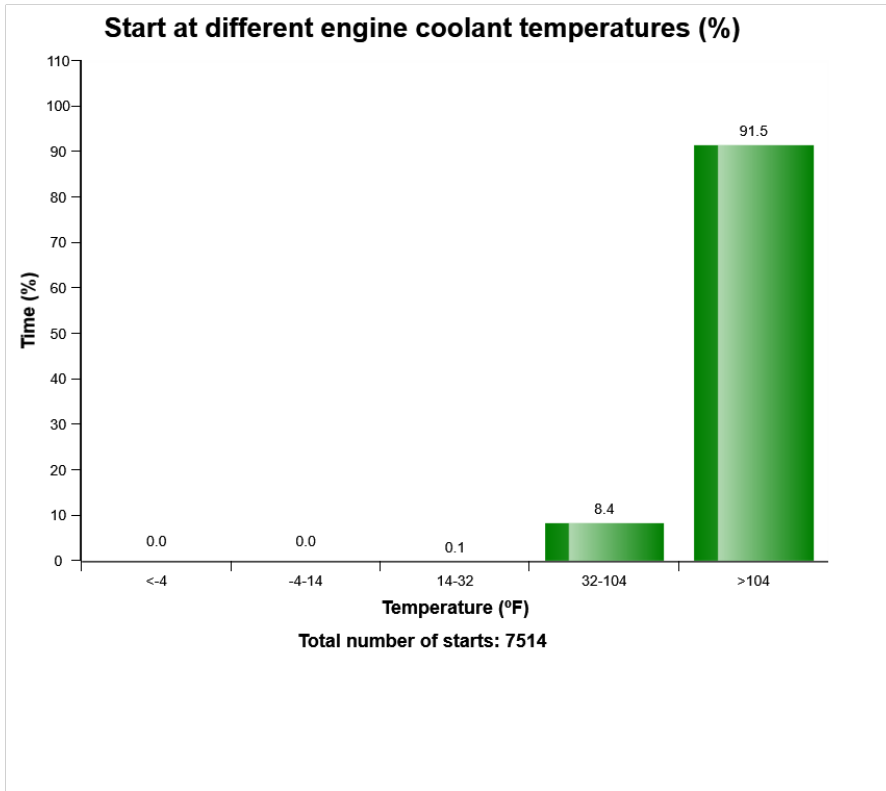
Machine model	SerialNo	Operating Hours	Reading Date
L70H	622900	2722.2	18/11/2019



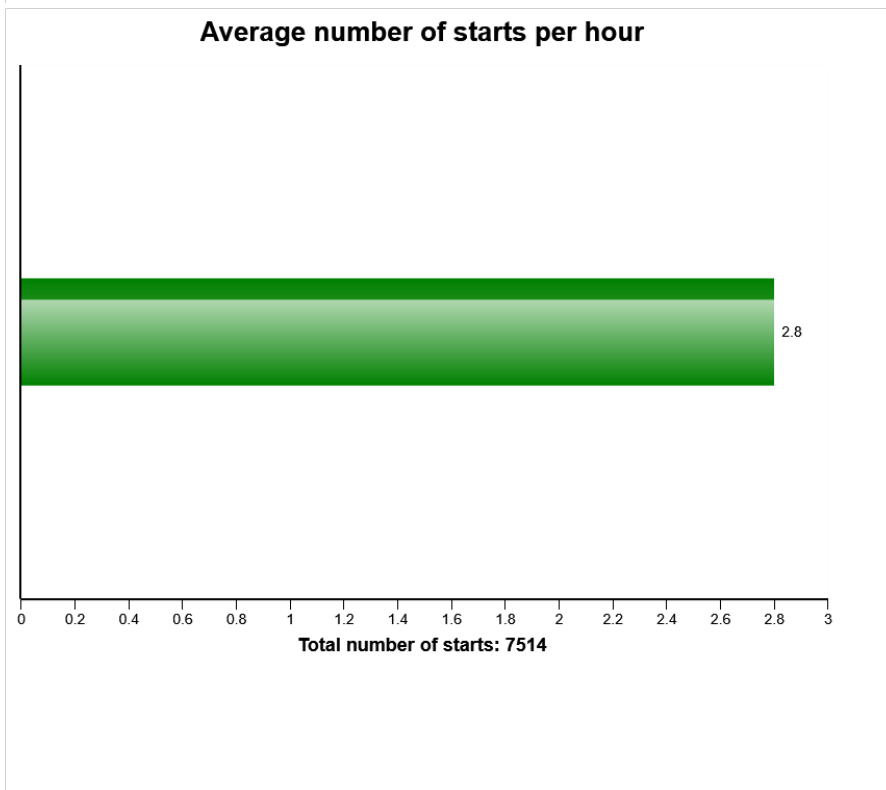
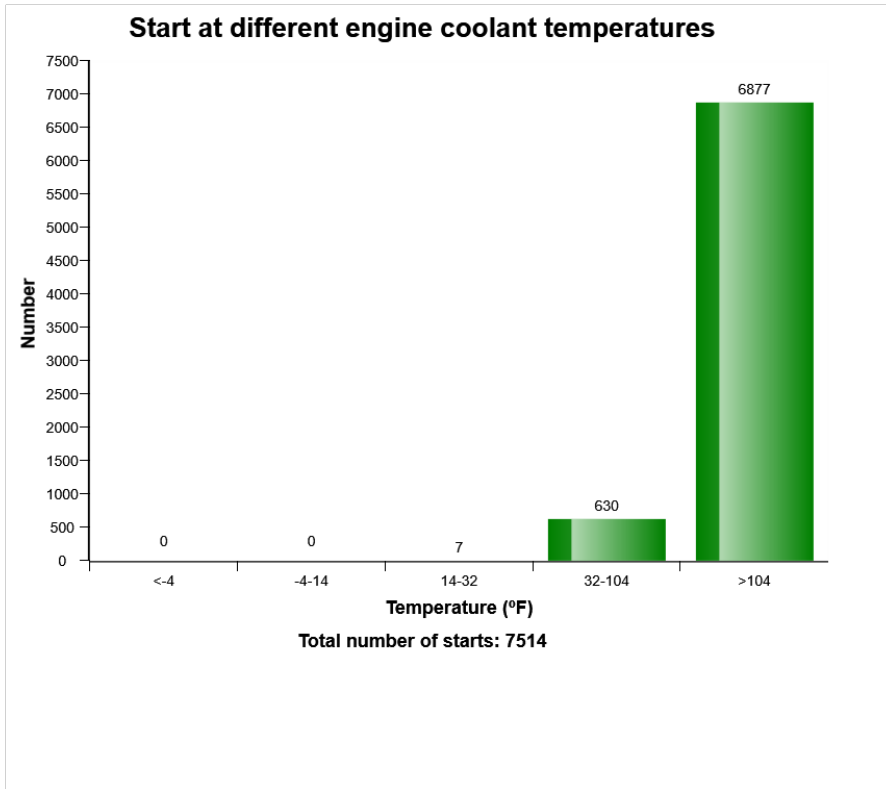
Machine model	SerialNo	Operating Hours	Reading Date
L70H	622900	2722.2	18/11/2019



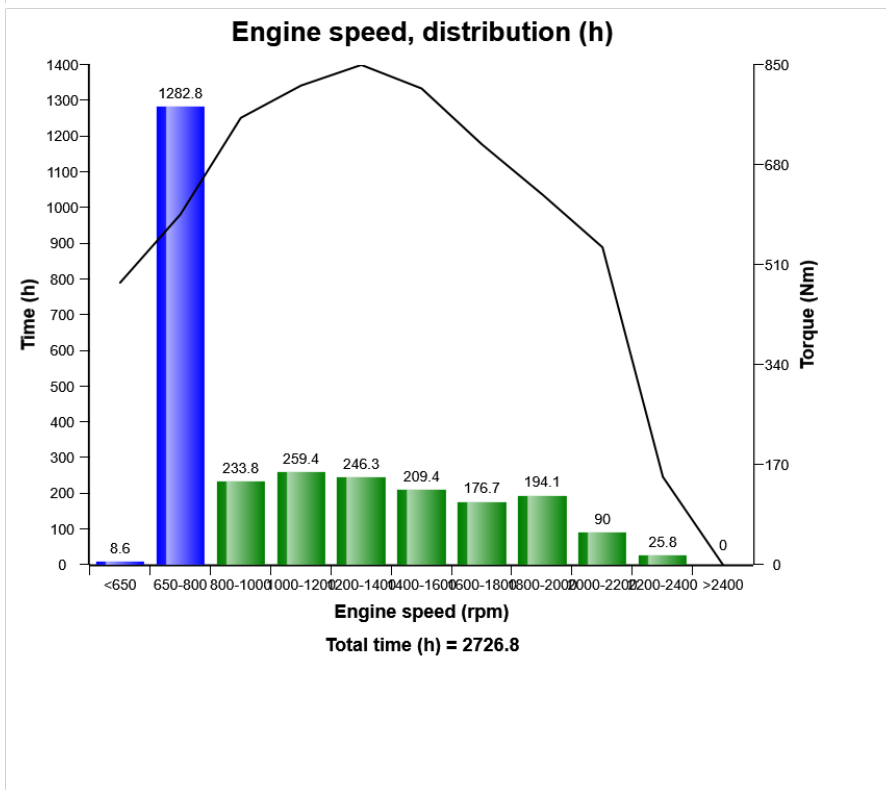
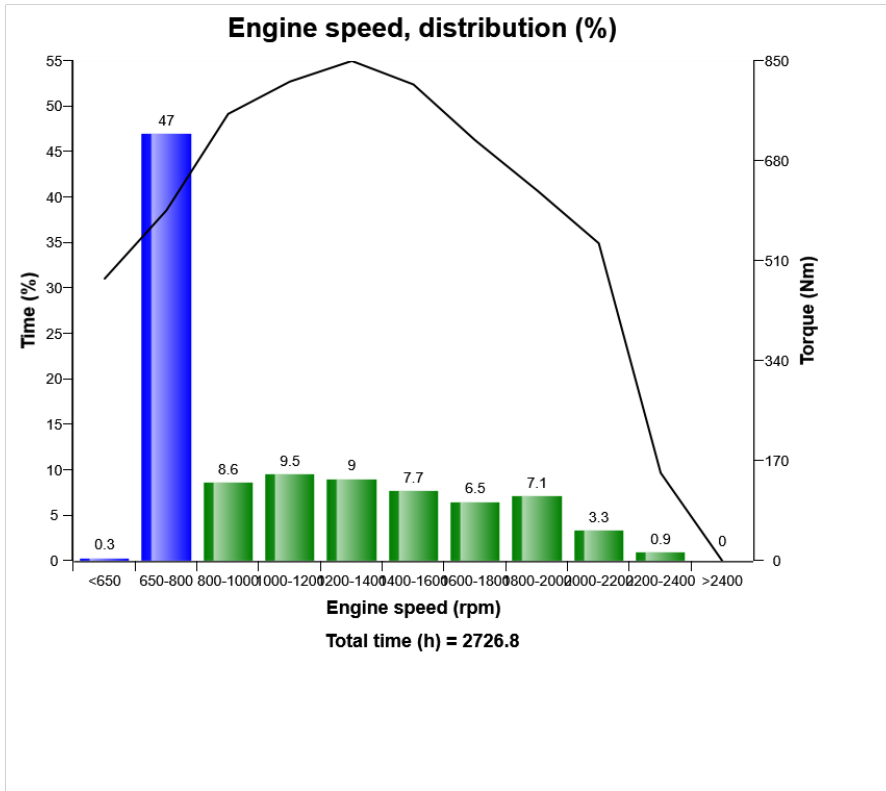
Machine model	SerialNo	Operating Hours	Reading Date
L70H	622900	2722.2	18/11/2019



Machine model	SerialNo	Operating Hours	Reading Date
L70H	622900	2722.2	18/11/2019



Machine model	SerialNo	Operating Hours	Reading Date
L70H	622900	2722.2	18/11/2019



Machine model	SerialNo	Operating Hours	Reading Date
L70H	622900	2722.2	18/11/2019

Low Engine Oil Pressure
Total number of occurrences = 5

Op hours	Year	Month	Day	Hour	Minute	Duration (seconds)	Extreme (psi)
* 0	2000	0	0	0	0	0	0
* 0	2000	0	0	0	0	0	0
* 0	2000	0	0	0	0	0	0
* 0	2000	0	0	0	0	0	0
* 0	2000	0	0	0	0	0	0
* 0	2000	0	0	0	0	0	0
* 0	2000	0	0	0	0	0	0
* 0	2000	0	0	0	0	0	0
* 0	2000	0	0	0	0	0	0
* 0	2000	0	0	0	0	0	0
* 0	2000	0	0	0	0	0	0
* 0	2000	0	0	0	0	0	0
* 0	2000	0	0	0	0	0	0
* 0	2000	0	0	0	0	0	0
* 0	2000	0	0	0	0	0	0
* 0	2000	0	0	0	0	0	0
* 0	2000	0	0	0	0	0	0
* 0	2000	0	0	0	0	0	0
* 0	2000	0	0	0	0	0	0
* 2724	2019	10	23	11	49	149	102
* 2724	2019	10	23	11	45	80	102
* 2724	2019	10	8	9	54	1	160
* 2724	2019	10	8	8	13	14	116
* 2724	2019	10	7	10	10	0	145



Machine model	SerialNo	Operating Hours	Reading Date
L70H	622900	2722.2	18/11/2019

Regeneration ignored
Total number of occurrences = 61

Op hours	Year	Month	Day	Hour	Minute	Duration (min)
* 1135	2018	8	21	13	21	23
* 1136	2018	8	22	7	18	17
* 1136	2018	8	22	10	21	17
* 1136	2018	8	22	10	42	8
* 1137	2018	8	23	6	32	12
* 1137	2018	8	22	11	18	15
* 1137	2018	8	22	15	30	12
* 1137	2018	8	22	16	29	16
* 1705	2019	5	14	16	18	31
* 1705	2019	5	14	13	9	46
* 1706	2019	5	14	17	16	20
* 1706	2019	5	14	18	32	6
* 1706	2019	5	14	20	30	52
* 1707	2019	5	15	0	19	31
* 1708	2019	5	15	1	44	1
* 1708	2019	5	15	1	34	5
* 1708	2019	5	15	4	2	3
* 1708	2019	5	15	3	29	8
* 2271	2019	8	5	5	10	9
* 2271	2019	8	3	12	10	10



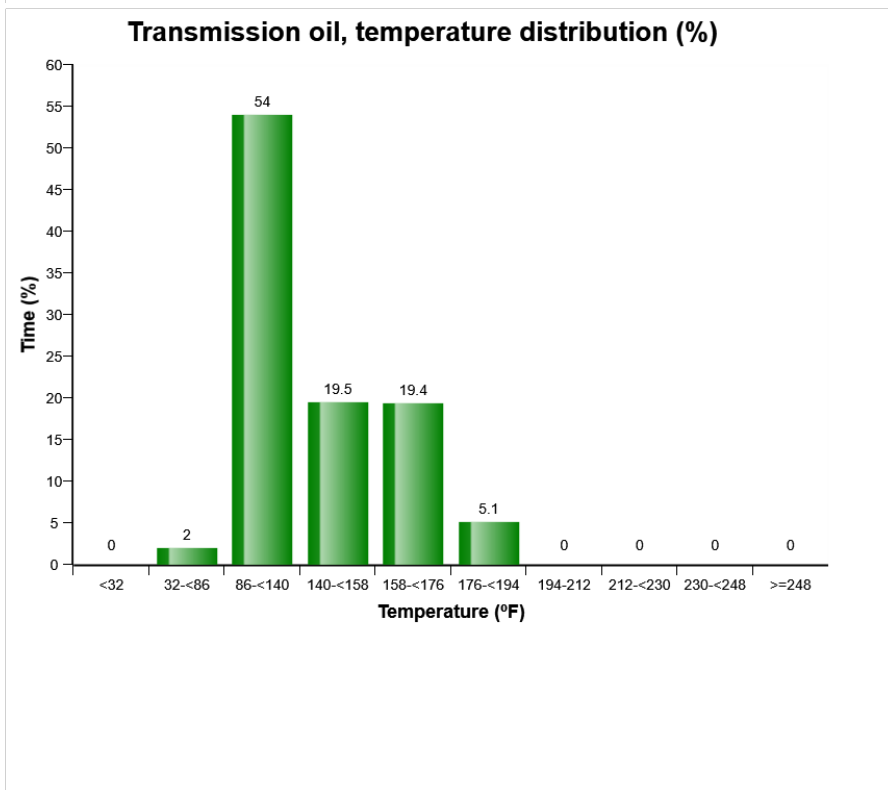
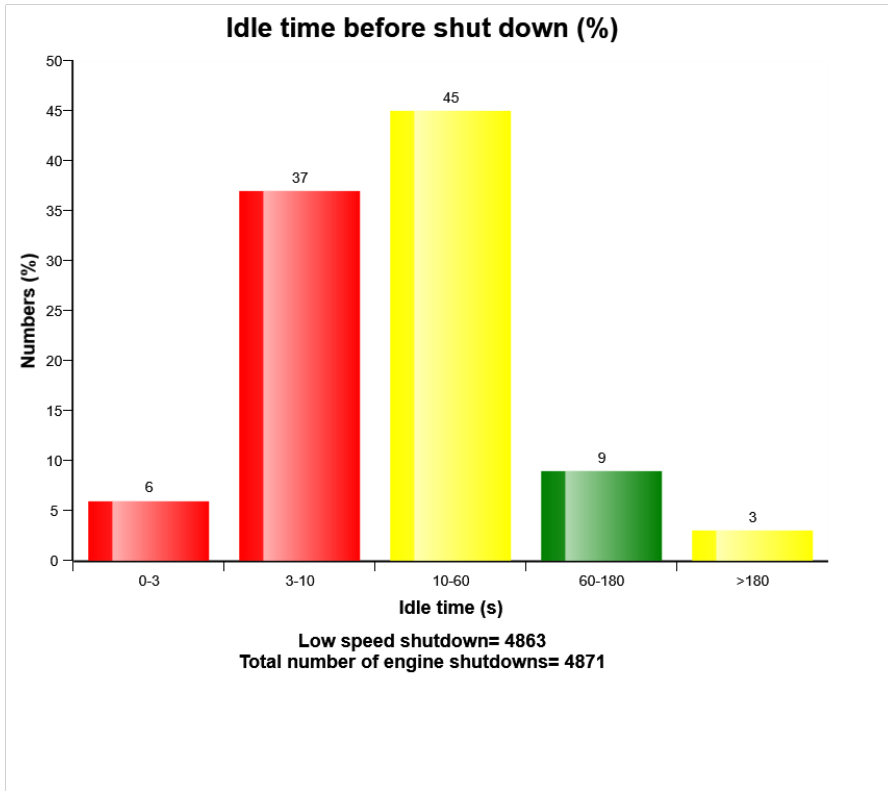
Machine model	SerialNo	Operating Hours	Reading Date
L70H	622900	2722.2	18/11/2019

Regeneration duration
Total number of occurrences = 8

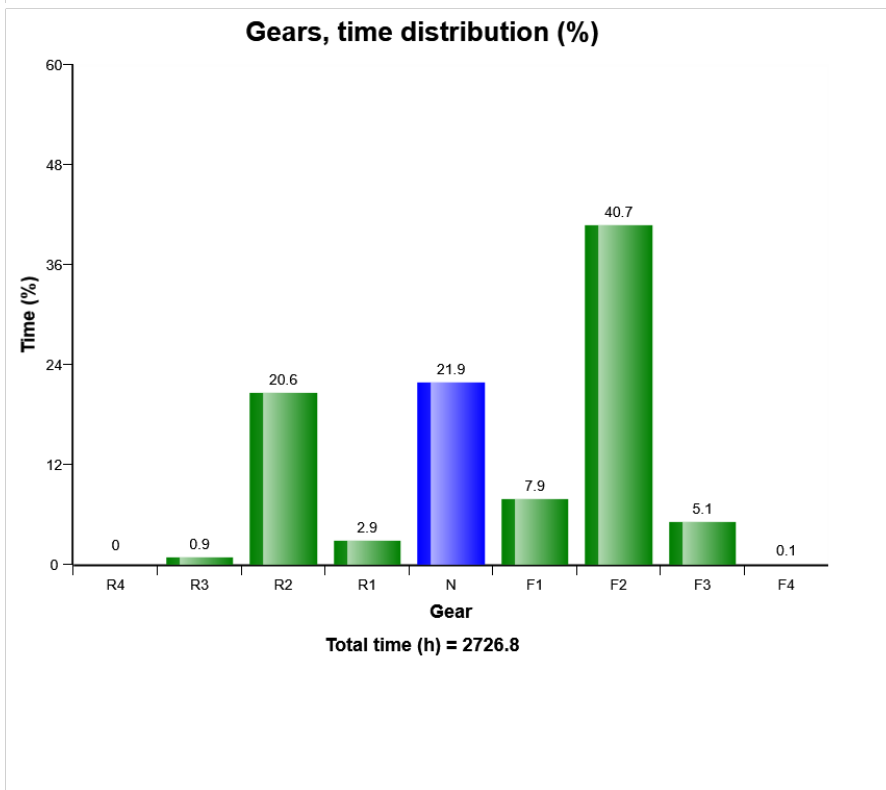
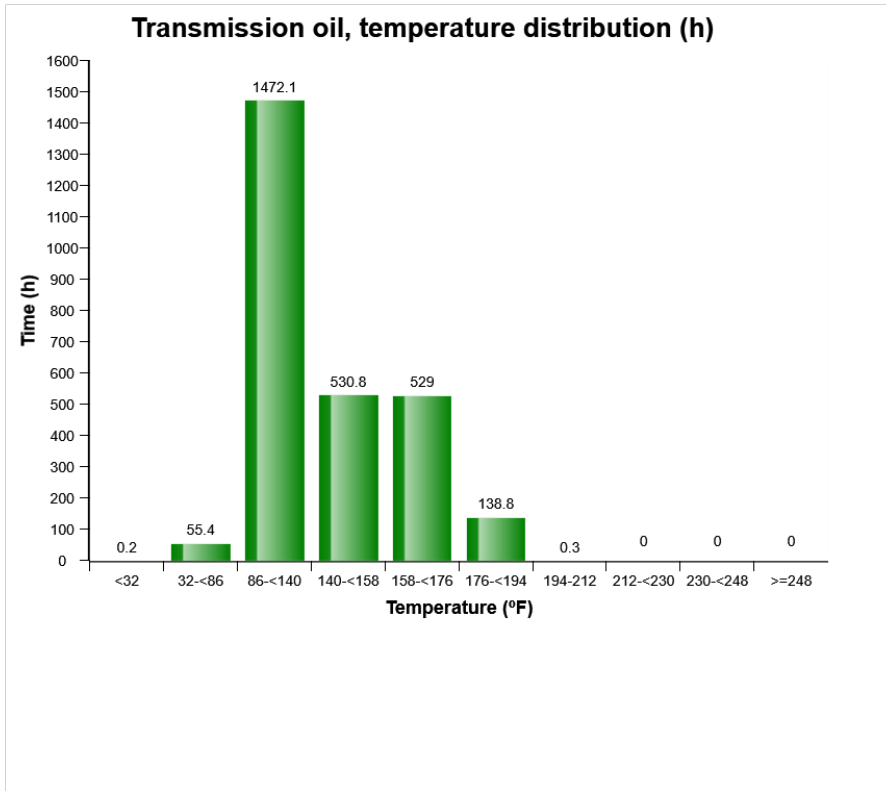
Op hours	Year	Month	Day	Hour	Minute	Duration (min)
* 0	2000	0	0	0	0	0
* 0	2000	0	0	0	0	0
* 0	2000	0	0	0	0	0
* 0	2000	0	0	0	0	0
* 0	2000	0	0	0	0	0
* 0	2000	0	0	0	0	0
* 0	2000	0	0	0	0	0
* 0	2000	0	0	0	0	0
* 0	2000	0	0	0	0	0
* 0	2000	0	0	0	0	0
* 0	2000	0	0	0	0	0
* 0	2000	0	0	0	0	0
* 0	2000	0	0	0	0	0
* 0	2000	0	0	0	0	0
* 0	2000	0	0	0	0	0
* 558	2018	2	14	10	11	14
* 560	2018	2	14	13	5	26
* 563	2018	2	15	7	17	15
* 565	2018	2	15	9	46	18
* 567	2018	2	15	12	57	42
* 1137	2018	8	23	6	43	45
* 1708	2019	5	15	4	5	45
* 2271	2019	8	5	5	19	45



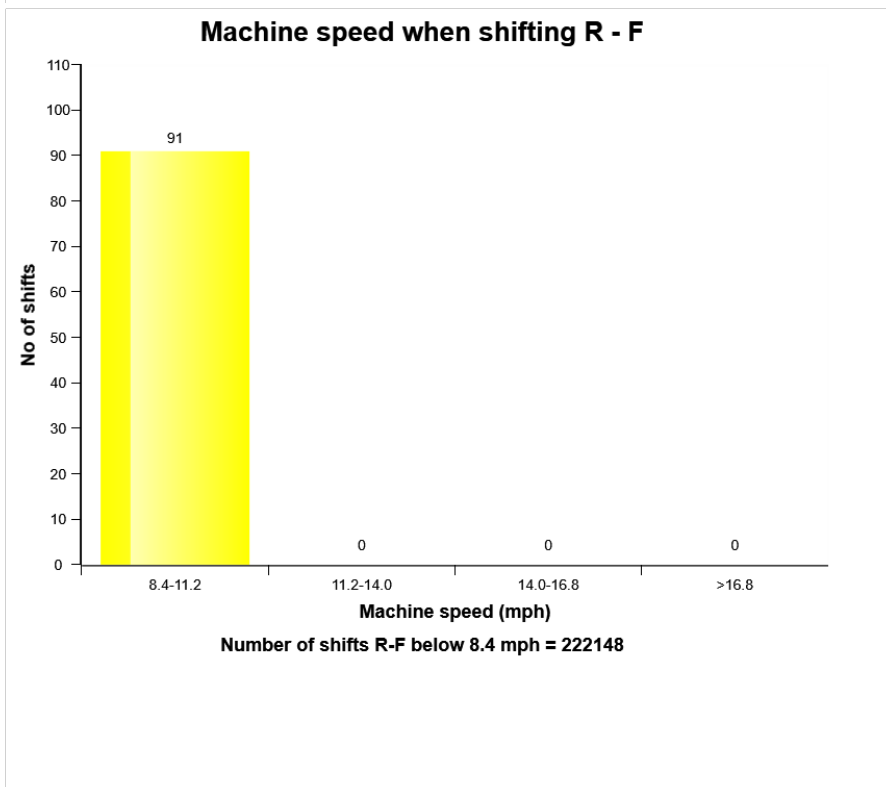
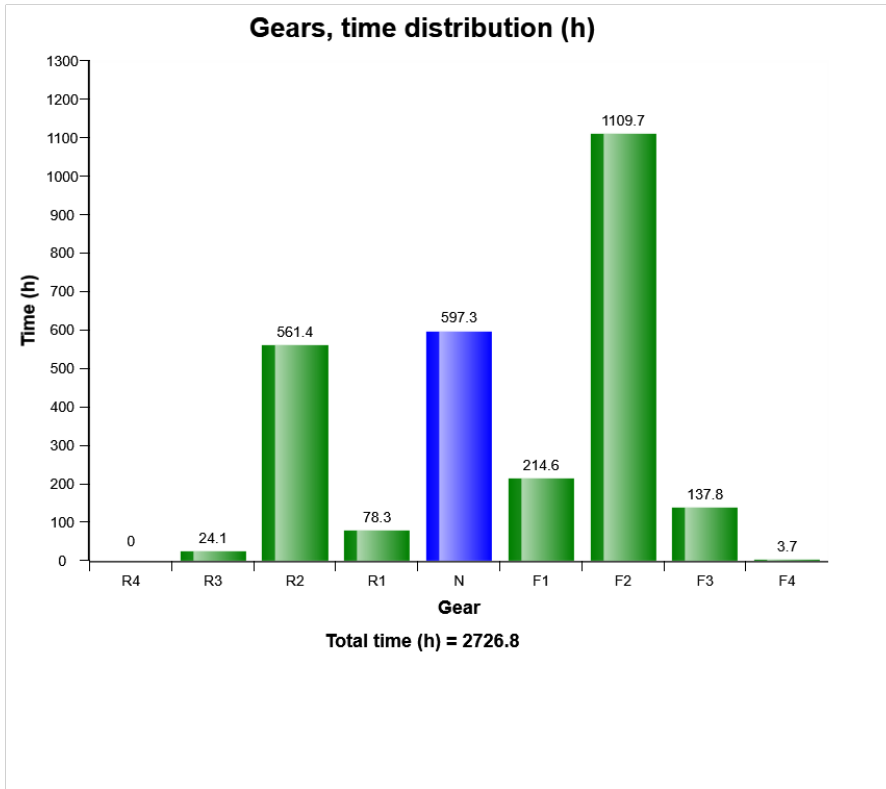
Machine model	SerialNo	Operating Hours	Reading Date
L70H	622900	2722.2	18/11/2019



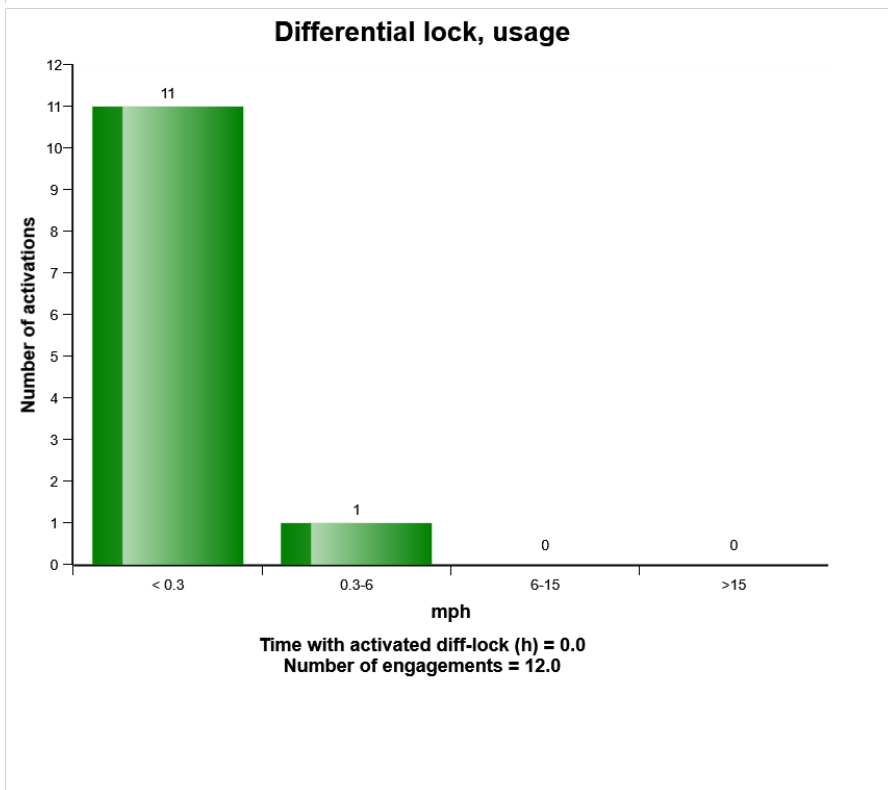
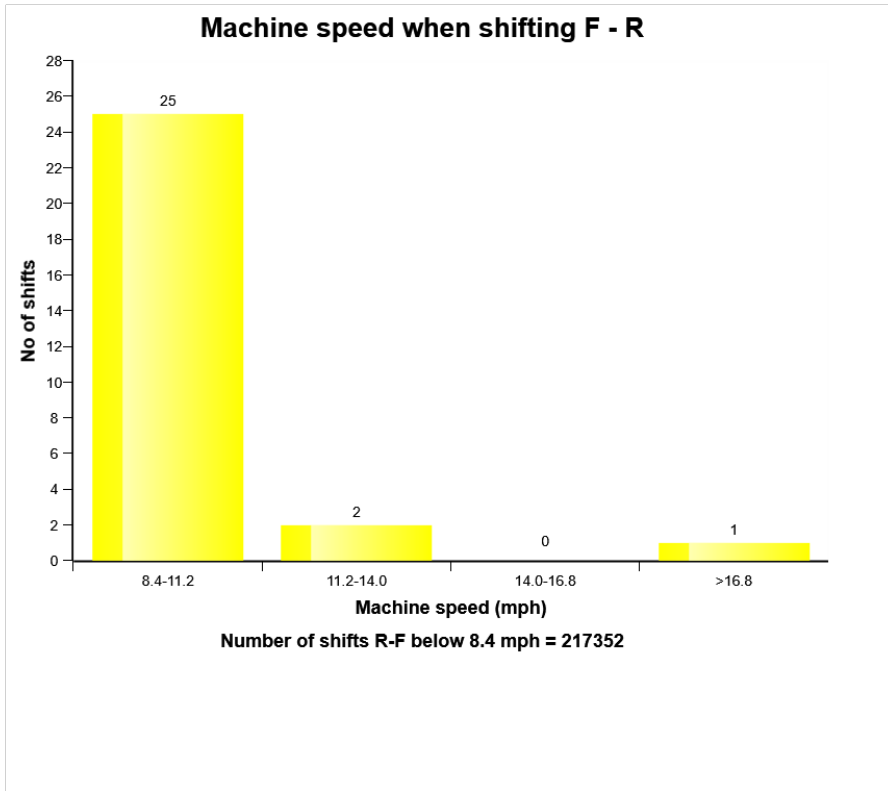
Machine model	SerialNo	Operating Hours	Reading Date
L70H	622900	2722.2	18/11/2019



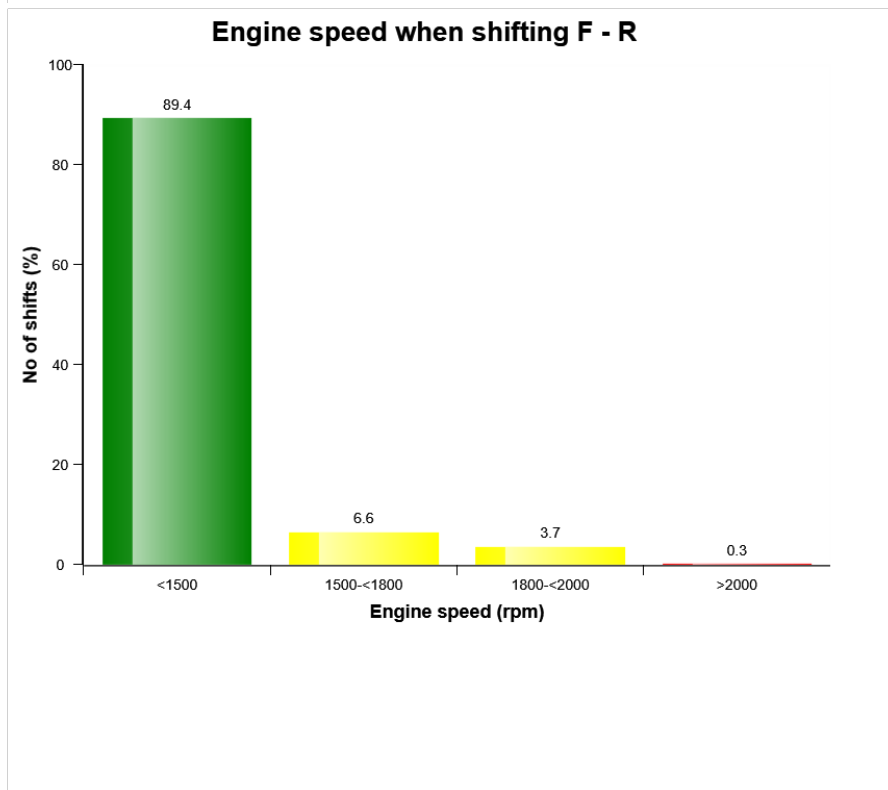
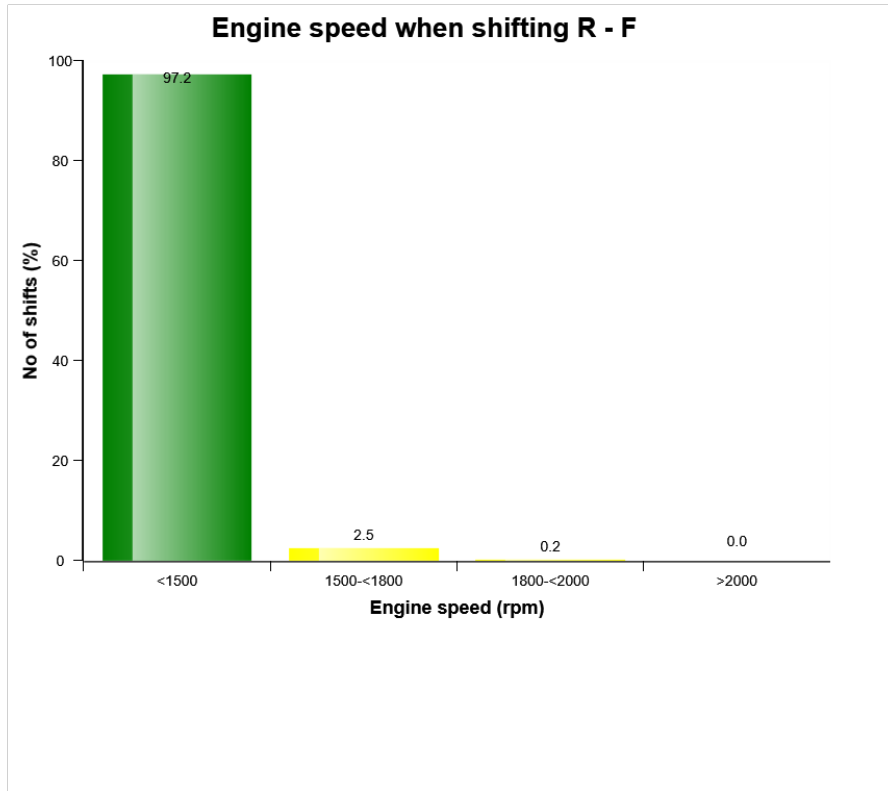
Machine model	SerialNo	Operating Hours	Reading Date
L70H	622900	2722.2	18/11/2019



Machine model	SerialNo	Operating Hours	Reading Date
L70H	622900	2722.2	18/11/2019

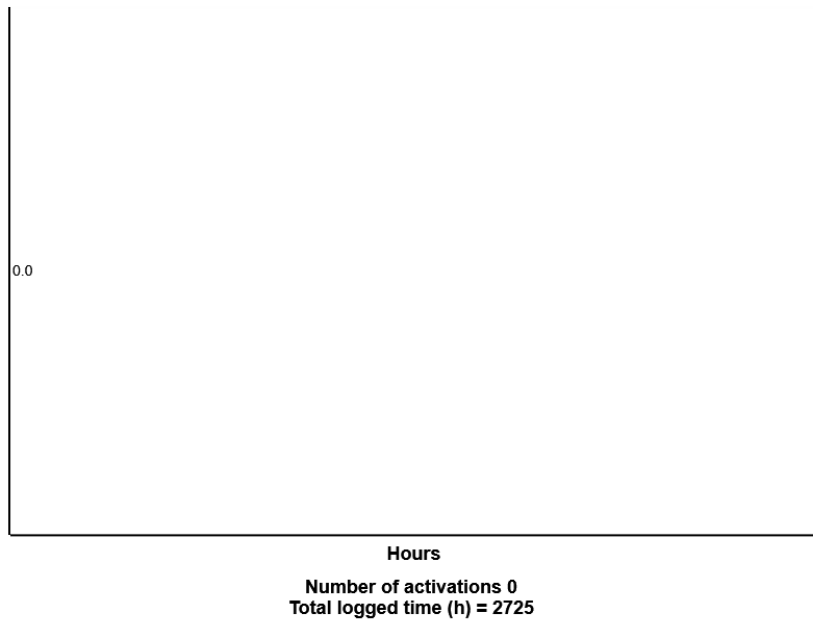


Machine model	SerialNo	Operating Hours	Reading Date
L70H	622900	2722.2	18/11/2019

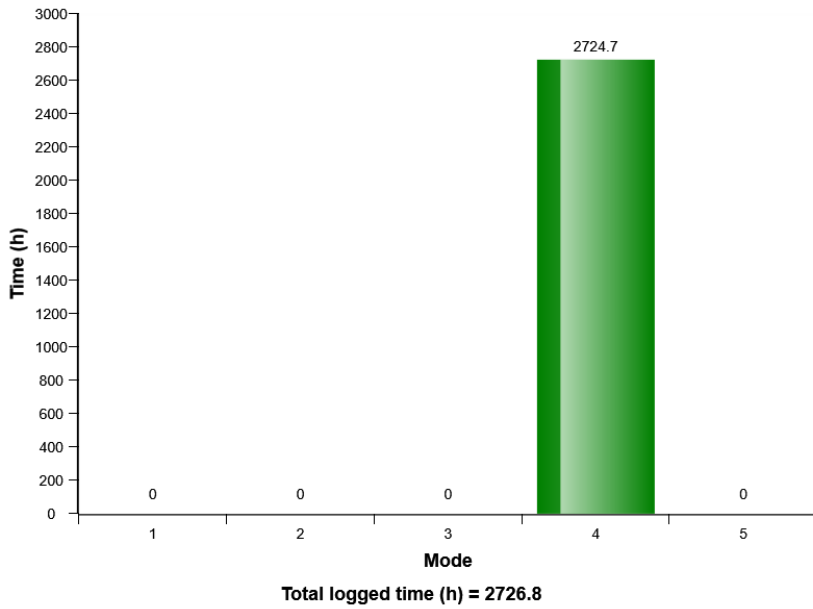


Machine model	SerialNo	Operating Hours	Reading Date
L70H	622900	2722.2	18/11/2019

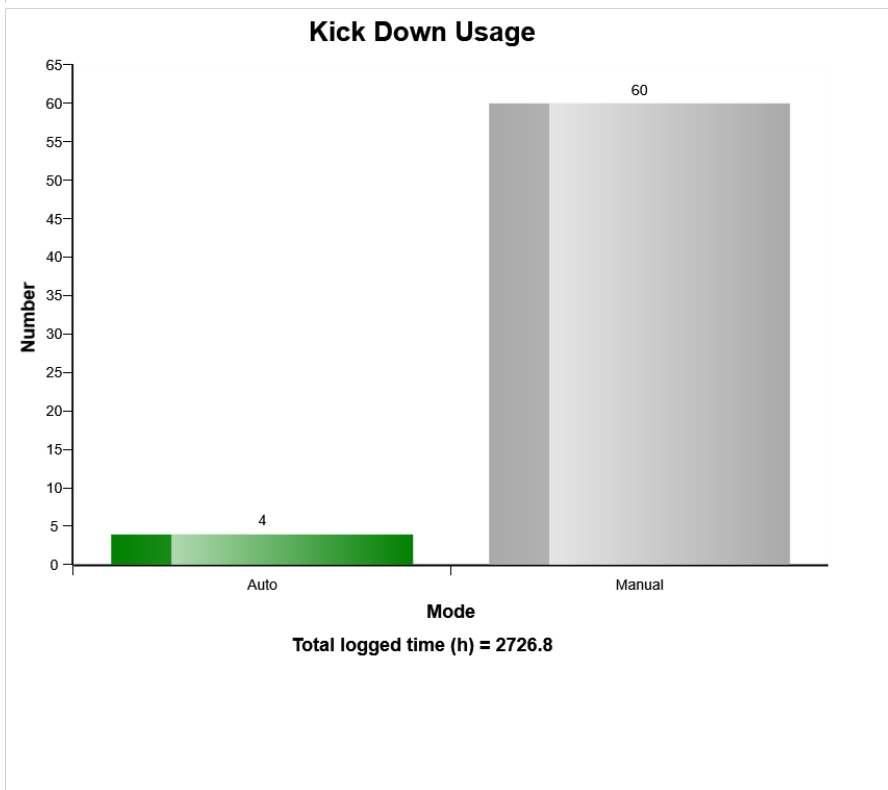
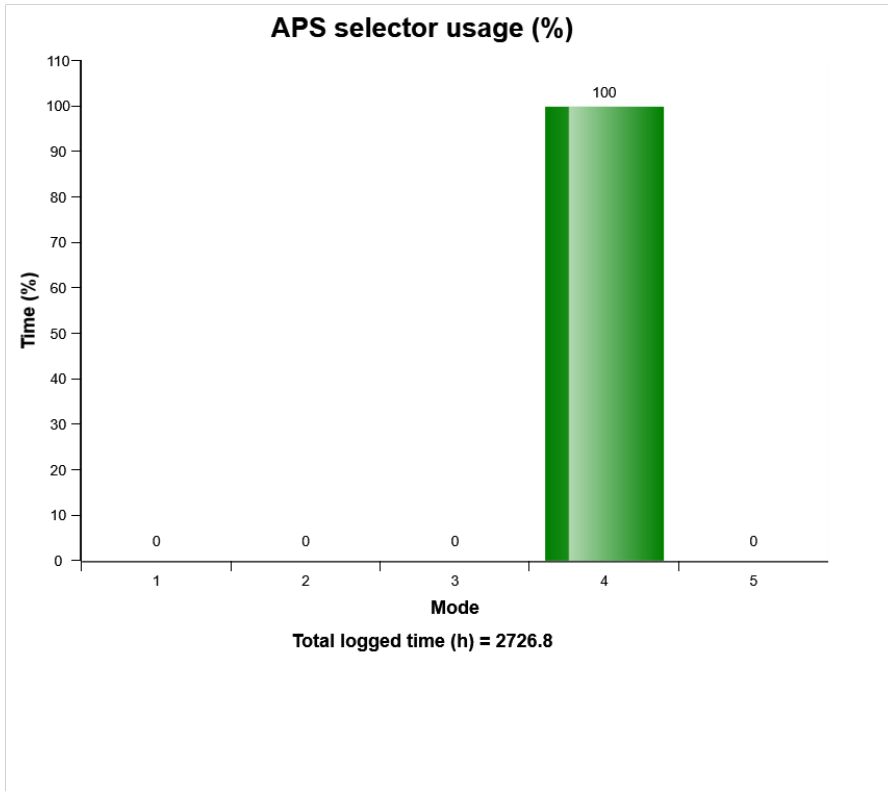
Usage of transmission cut off



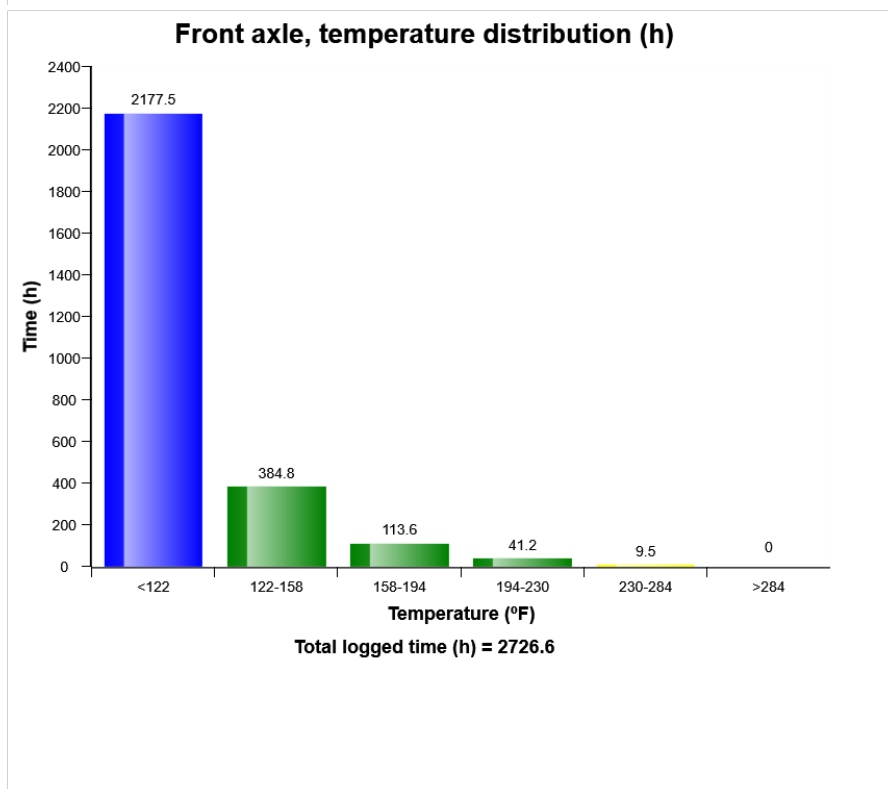
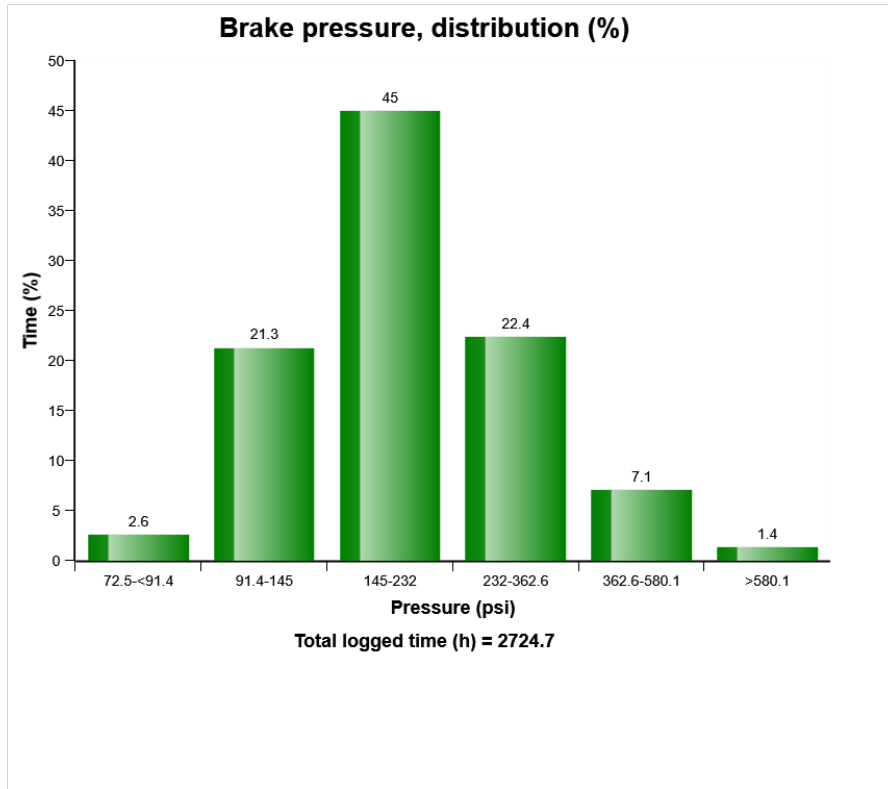
APS selector usage (h)



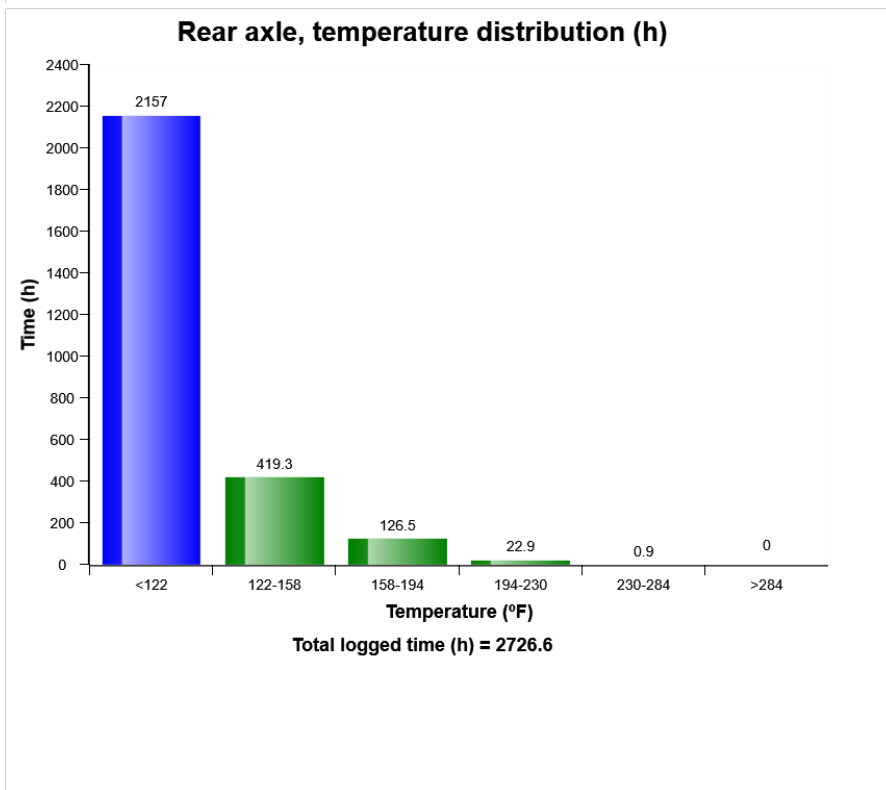
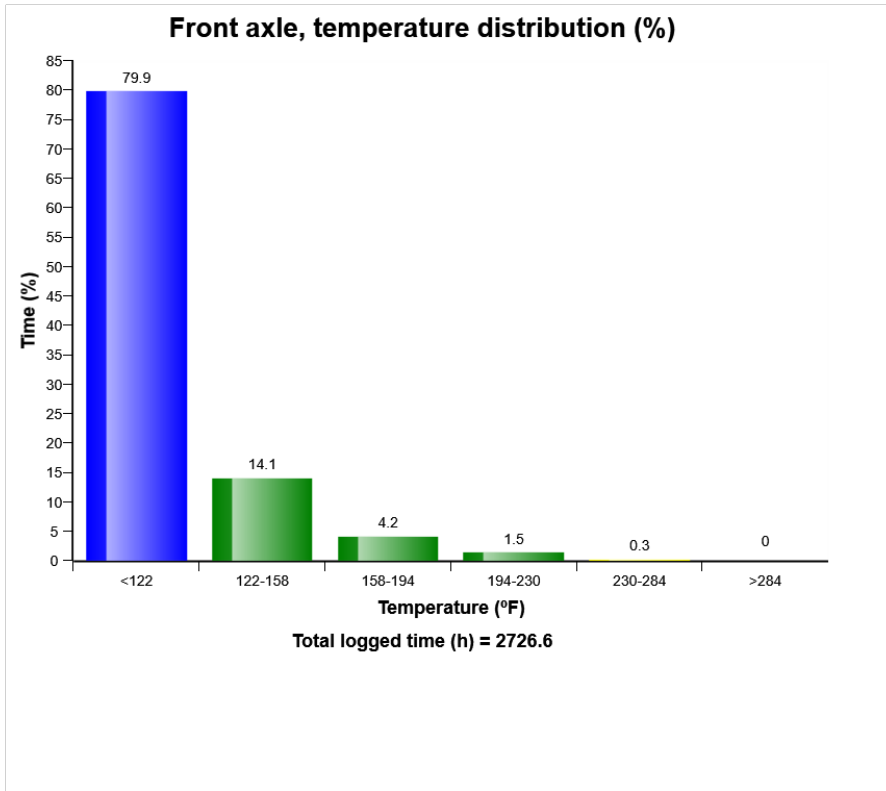
Machine model	SerialNo	Operating Hours	Reading Date
L70H	622900	2722.2	18/11/2019



Machine model	SerialNo	Operating Hours	Reading Date
L70H	622900	2722.2	18/11/2019



Machine model	SerialNo	Operating Hours	Reading Date
L70H	622900	2722.2	18/11/2019



Machine model	SerialNo	Operating Hours	Reading Date
L70H	622900	2722.2	18/11/2019

Parking brake usage
Total number of occurrences = 14808

Op hours	Year	Month	Day	Hour	Minute	Duration (minutes)
0	2019	11	14	15	58	1
0	2019	11	4	16	5	2
0	2019	11	4	15	47	17
0	2019	11	4	15	37	0
0	2019	11	4	15	36	0
0	2019	11	4	15	30	4
0	2019	11	4	15	26	0
0	2019	11	4	15	14	5
0	2019	11	4	12	58	6
0	2019	11	4	12	39	4
0	2019	11	4	12	30	4
0	2019	11	18	18	6	4
0	2019	11	18	17	57	7
0	2019	11	15	14	58	1
0	2019	11	15	13	5	17
0	2019	11	15	11	21	0
0	2019	11	15	10	6	0
0	2019	11	14	16	3	0
0	2019	11	4	17	5	0
0	2019	11	4	17	9	3



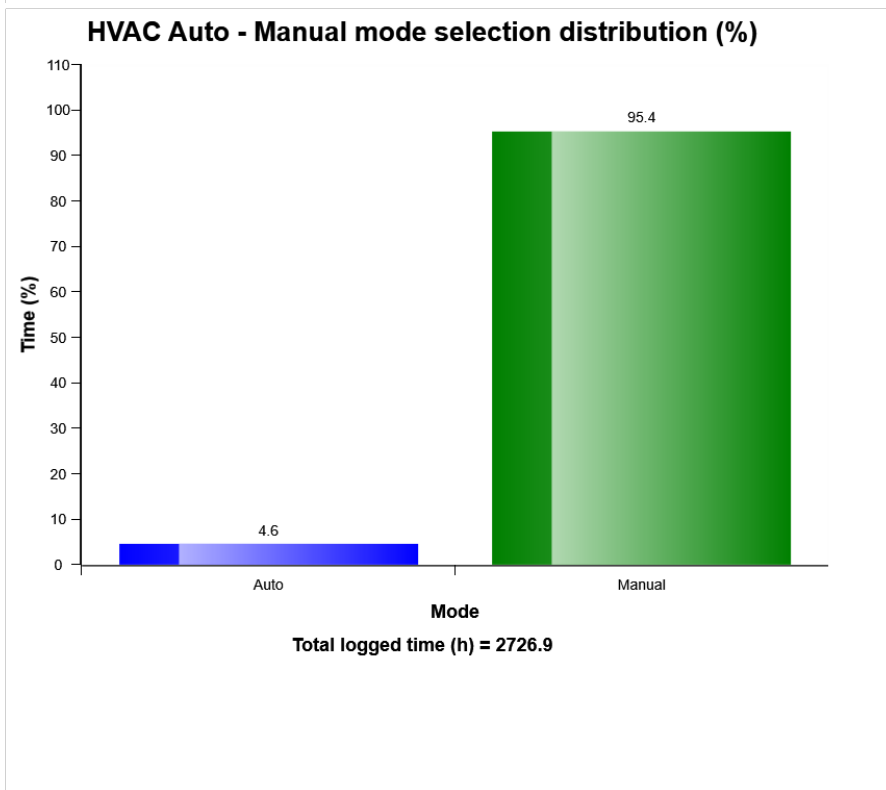
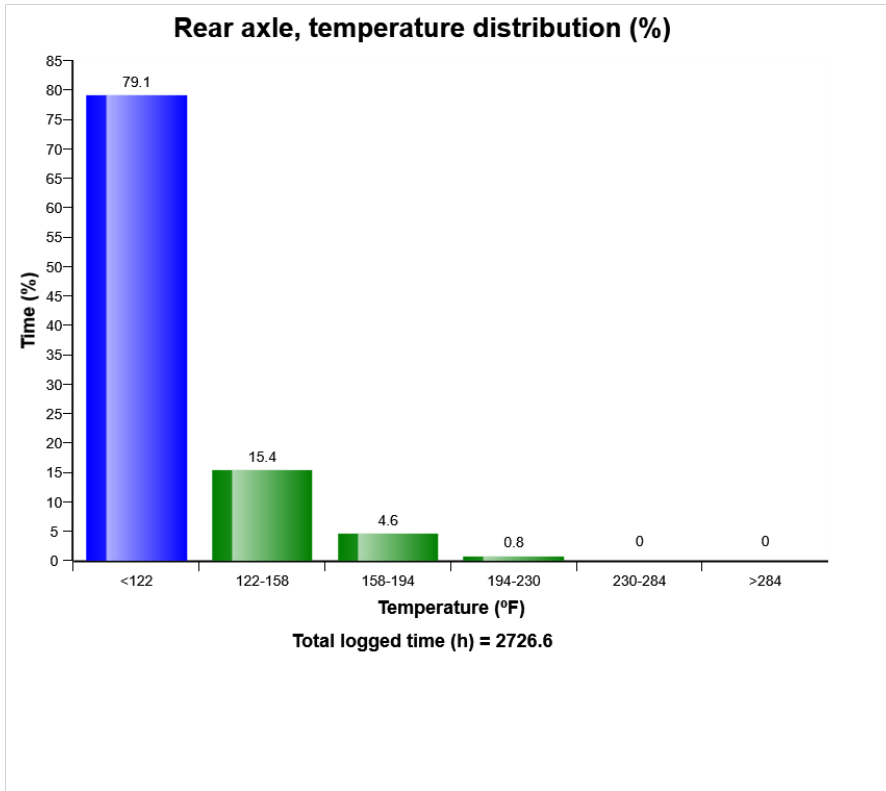
Machine model	SerialNo	Operating Hours	Reading Date
L70H	622900	2722.2	18/11/2019

Parking brake abuse
Total number of occurrences = 2

Op hours	Year	Month	Day	Hour	Minute	Duration (seconds)	Extreme (km/h)
0	2017	10	27	12	5	0	4
0	2000	0	0	0	0	0	0
0	2000	0	0	0	0	0	0
0	2000	0	0	0	0	0	0
0	2000	0	0	0	0	0	0
0	2000	0	0	0	0	0	0
0	2000	0	0	0	0	0	0
0	2000	0	0	0	0	0	0
0	2000	0	0	0	0	0	0
0	2000	0	0	0	0	0	0
0	2000	0	0	0	0	0	0
0	2000	0	0	0	0	0	0
0	2000	0	0	0	0	0	0
0	2000	0	0	0	0	0	0
0	2000	0	0	0	0	0	0
0	2000	0	0	0	0	0	0
0	2000	0	0	0	0	0	0
0	2000	0	0	0	0	0	0
0	2000	0	0	0	0	0	0
0	2000	0	0	0	0	0	0
0	2018	6	1	8	53	0	5
0	2000	0	0	0	0	0	0
0	2000	0	0	0	0	0	0

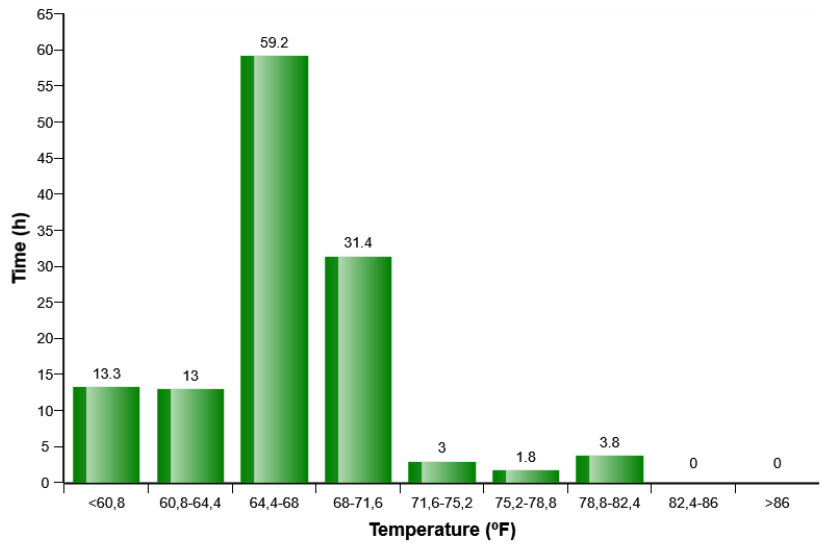


Machine model	SerialNo	Operating Hours	Reading Date
L70H	622900	2722.2	18/11/2019

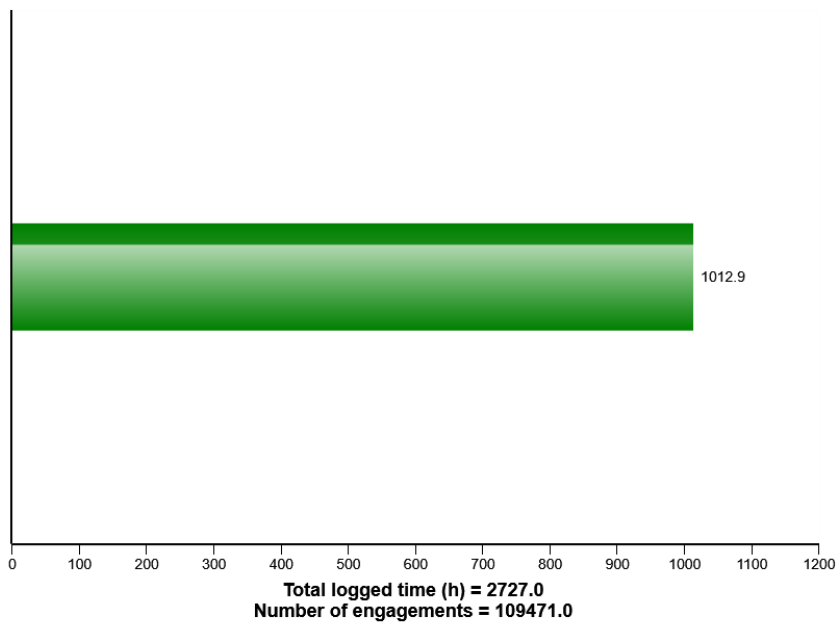


Machine model	SerialNo	Operating Hours	Reading Date
L70H	622900	2722.2	18/11/2019

HVAC air temperature setting in auto control mode distribution (h)

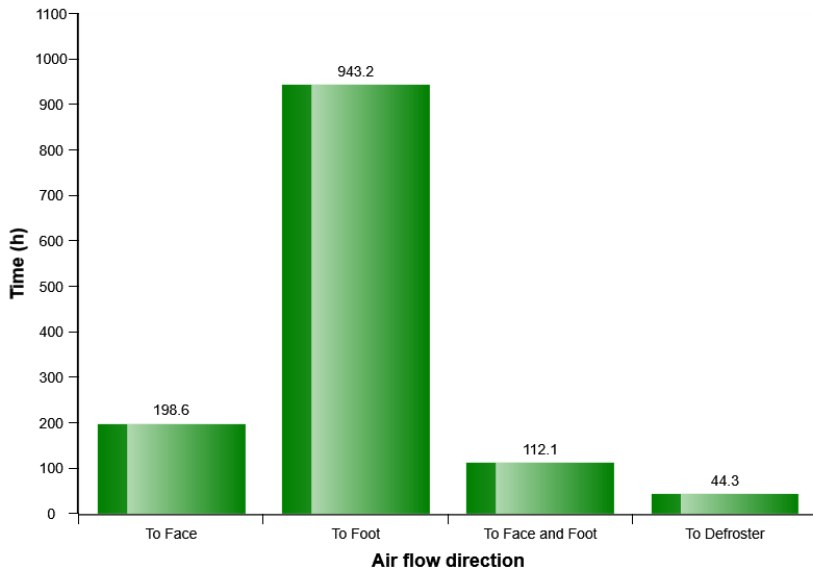


AC Compressor usage

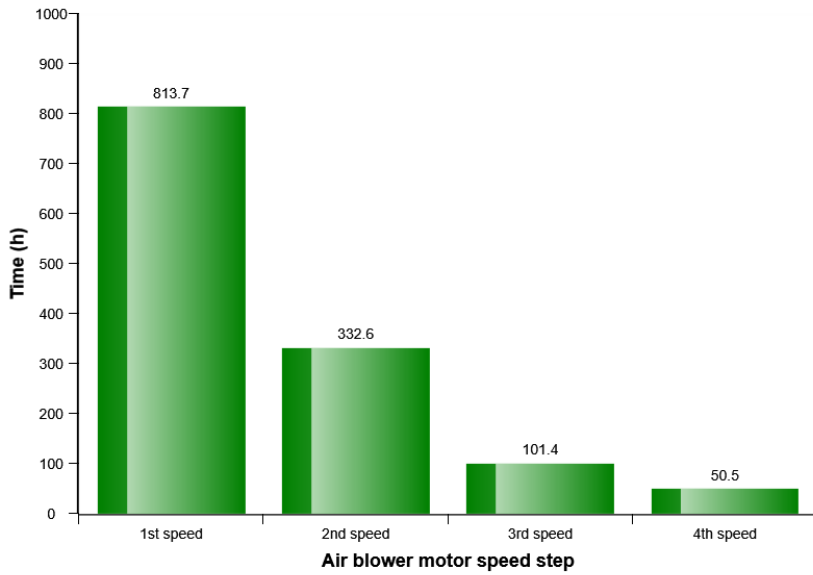


Machine model	SerialNo	Operating Hours	Reading Date
L70H	622900	2722.2	18/11/2019

HVAC air flow direction in manual mode distribution (h)



HVAC air blower motor speed in manual mode distribution (h)



Machine model	SerialNo	Operating Hours	Reading Date
L70H	622900	2722.2	18/11/2019

