

# VOLVO CONSTRUCTION EQUIPMENT MATRIS REPORT

Machine model <b>A25G</b>	SerialNo <b>740245</b>	Operating Hours <b>5130.8</b>	Reading Date <b>08/03/2020</b>
Company name <b>Ascendum</b>	Dealer	Report Issuer	
Contact name	Technician <b>Johnhornback</b>	Primary Application <b>Mining</b>	
Site	Workorder	Ground Condition	

MATRIS Reading, Summary / Recommendation

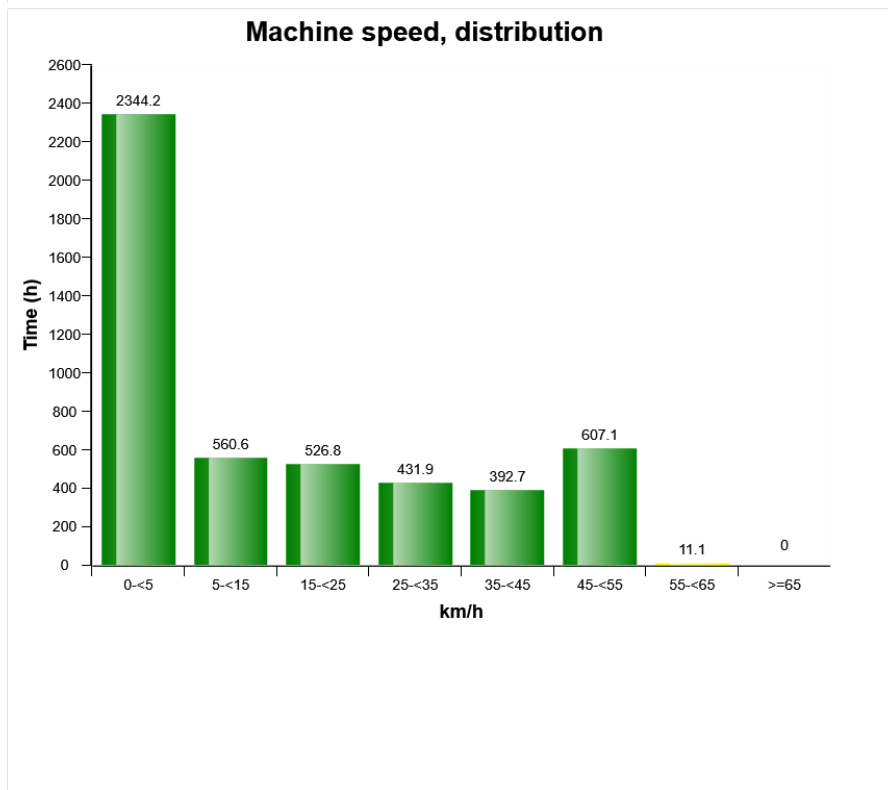
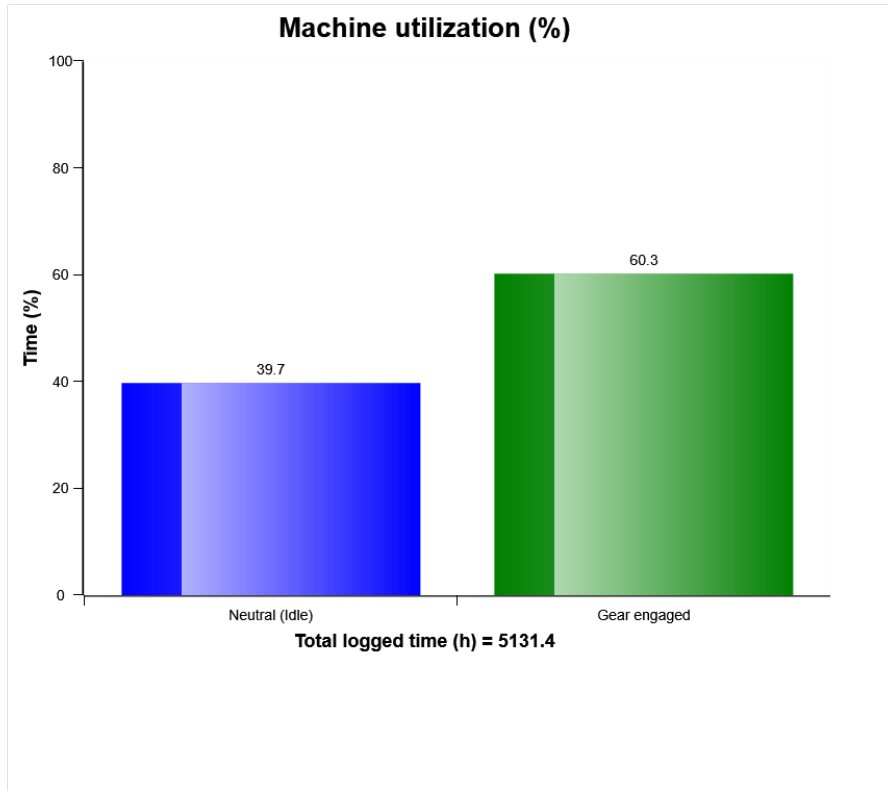


Machine model	SerialNo	Operating Hours	Reading Date
A25G	740245	5130.8	08/03/2020

Main equipment	Type	Equipment
	Tyre size/class	Sold without tyres
	Body extensions	Not mounted
	Tail-gate	Not mounted
	Extra spillguard	Not mounted
	Wear plates	Not mounted
	Pattern	None

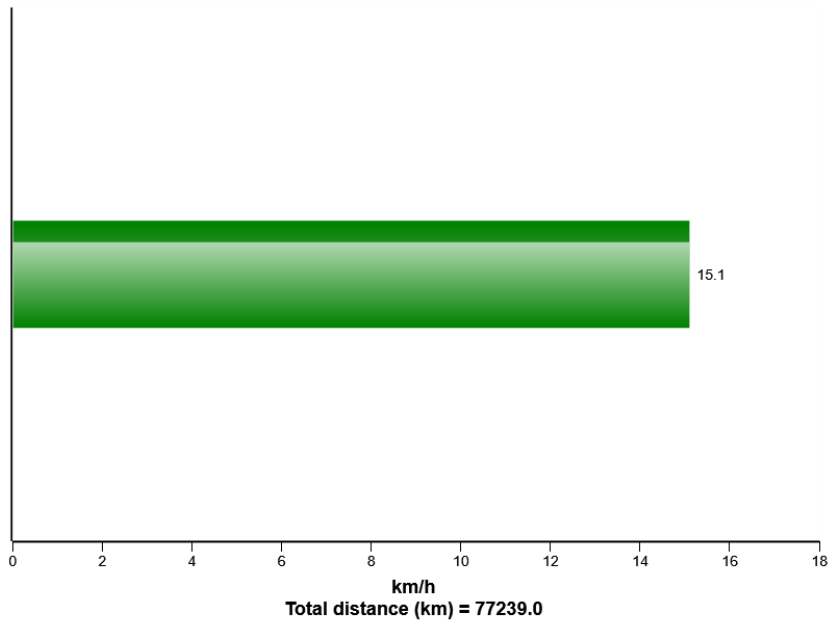


Machine model	SerialNo	Operating Hours	Reading Date
A25G	740245	5130.8	08/03/2020

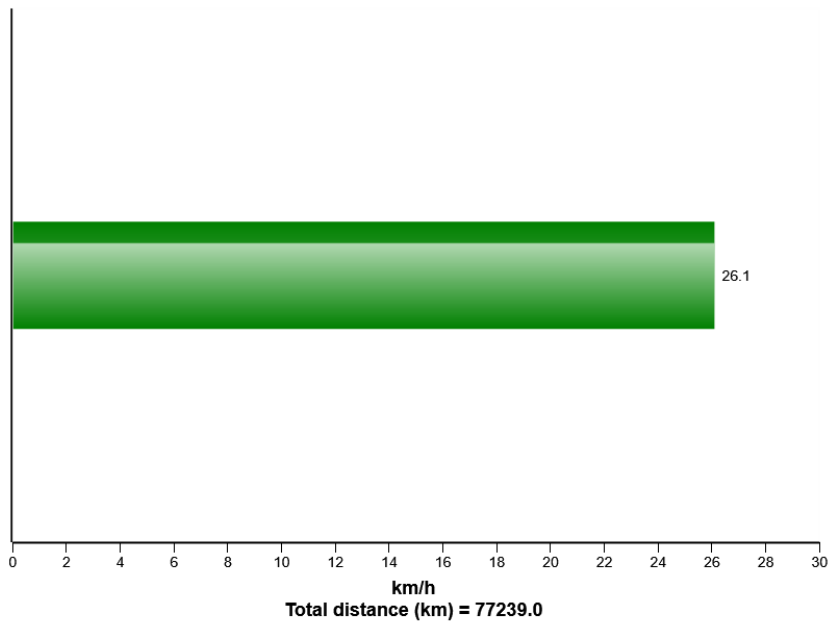


Machine model	SerialNo	Operating Hours	Reading Date
A25G	740245	5130.8	08/03/2020

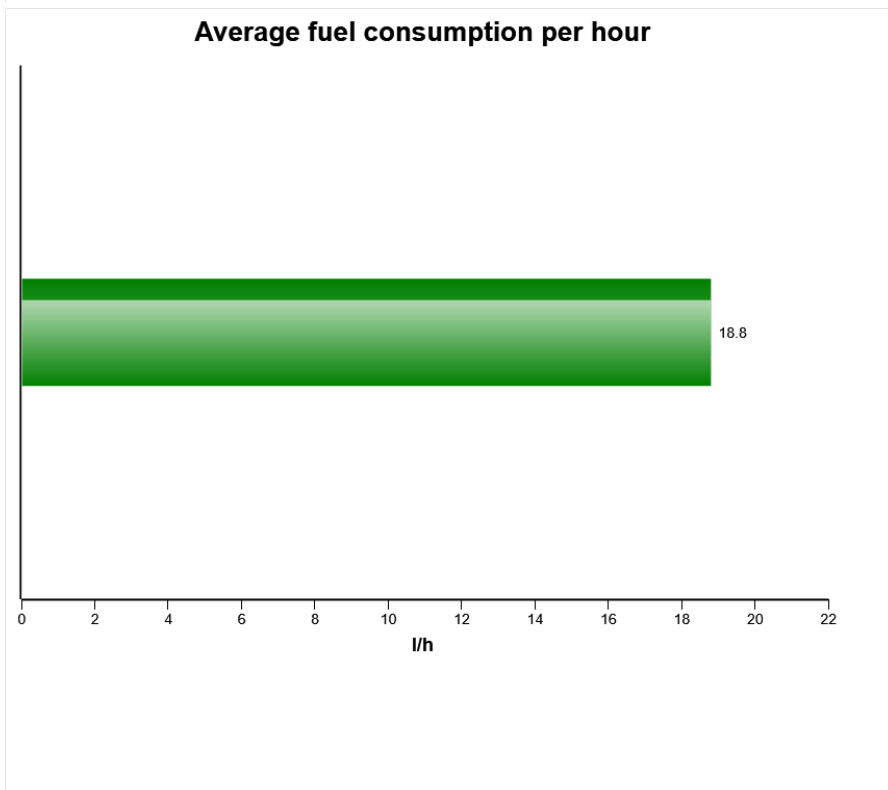
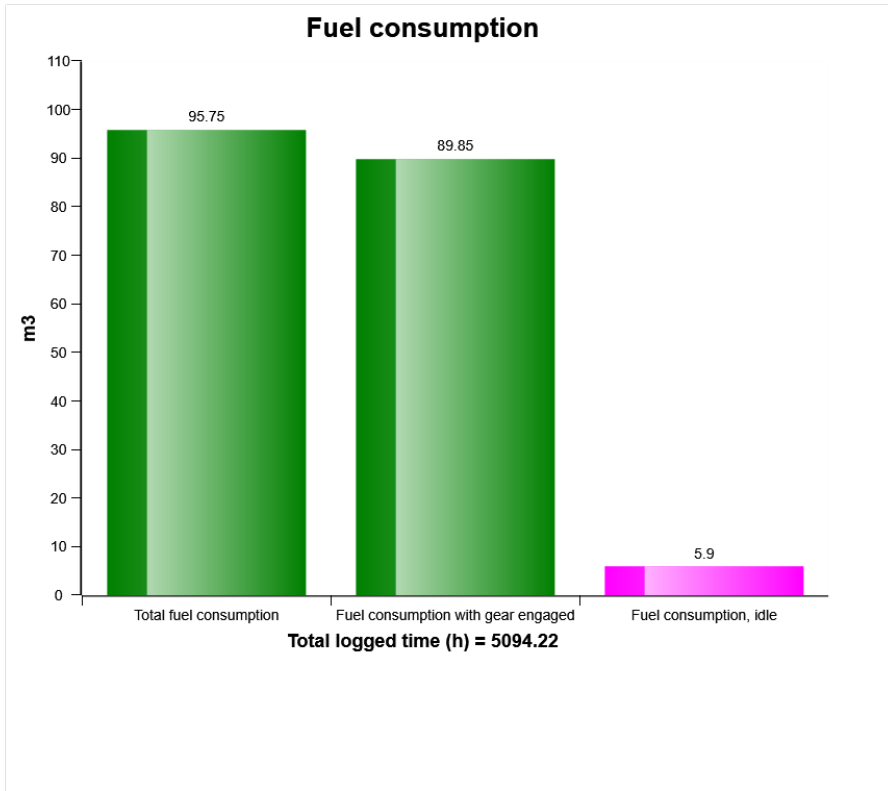
### Average speed over total operating hours



### Average speed with gear engaged

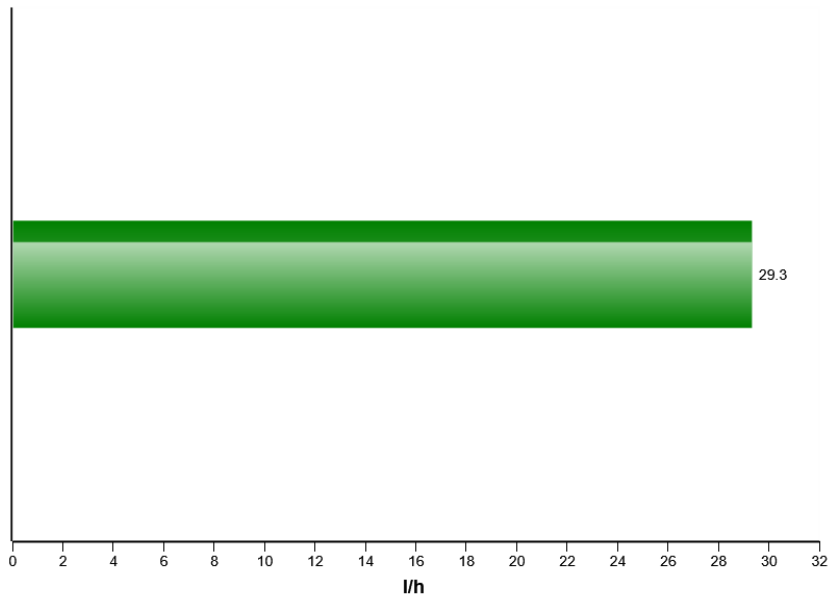


Machine model	SerialNo	Operating Hours	Reading Date
A25G	740245	5130.8	08/03/2020

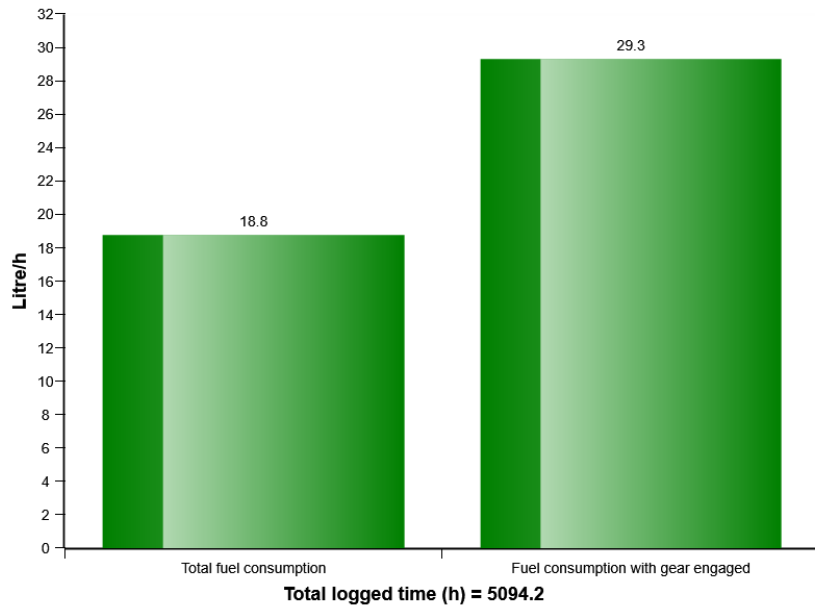


Machine model	SerialNo	Operating Hours	Reading Date
A25G	740245	5130.8	08/03/2020

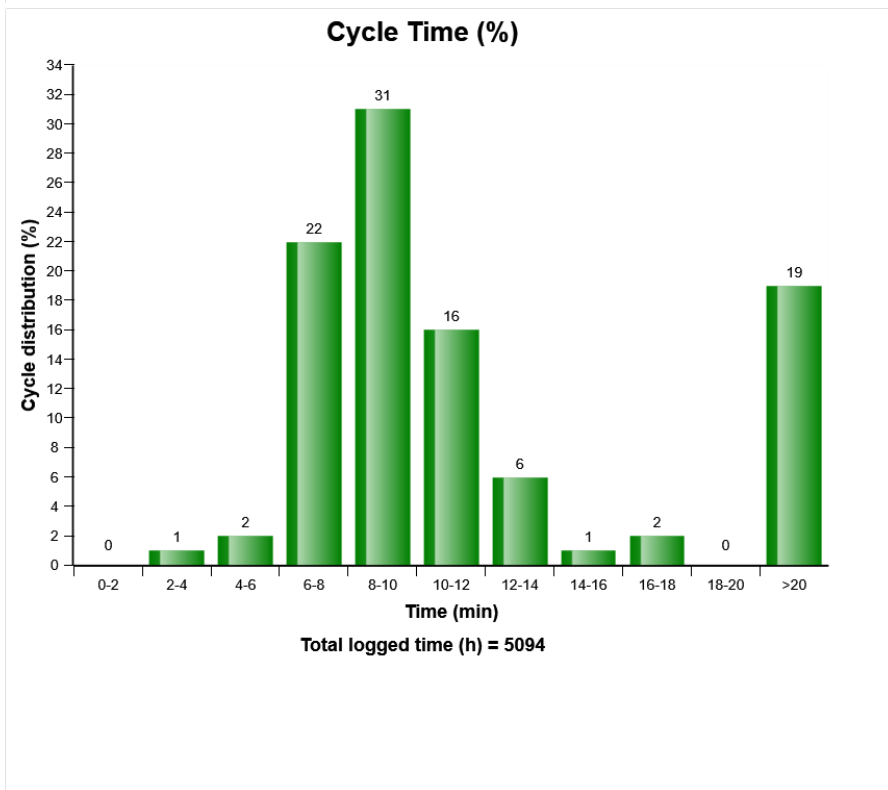
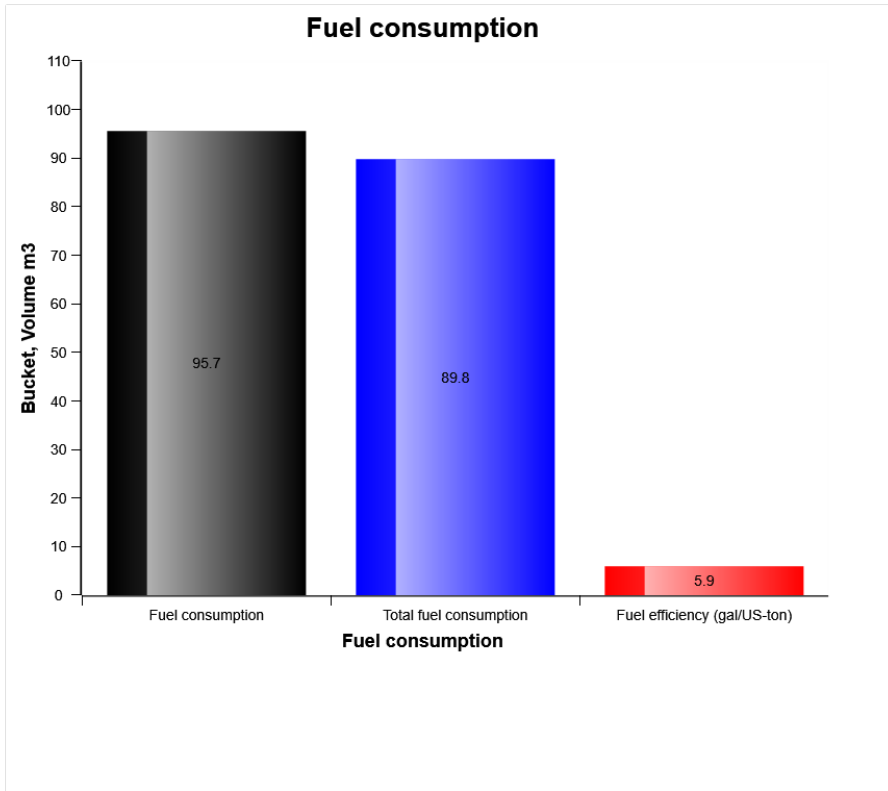
### Average fuel consumption per hour with gear engaged



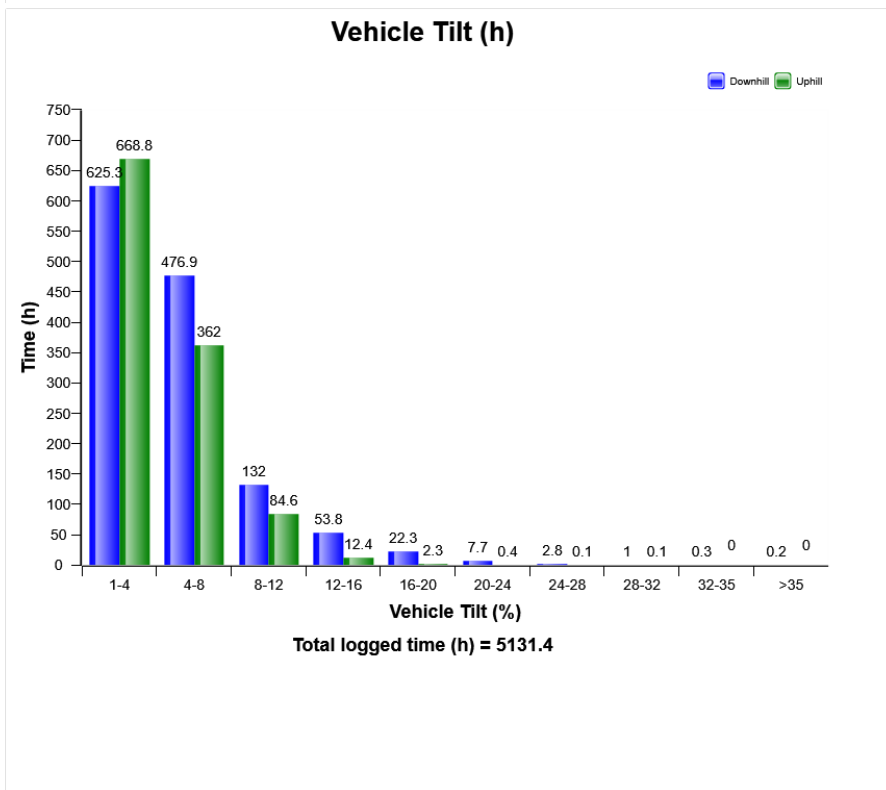
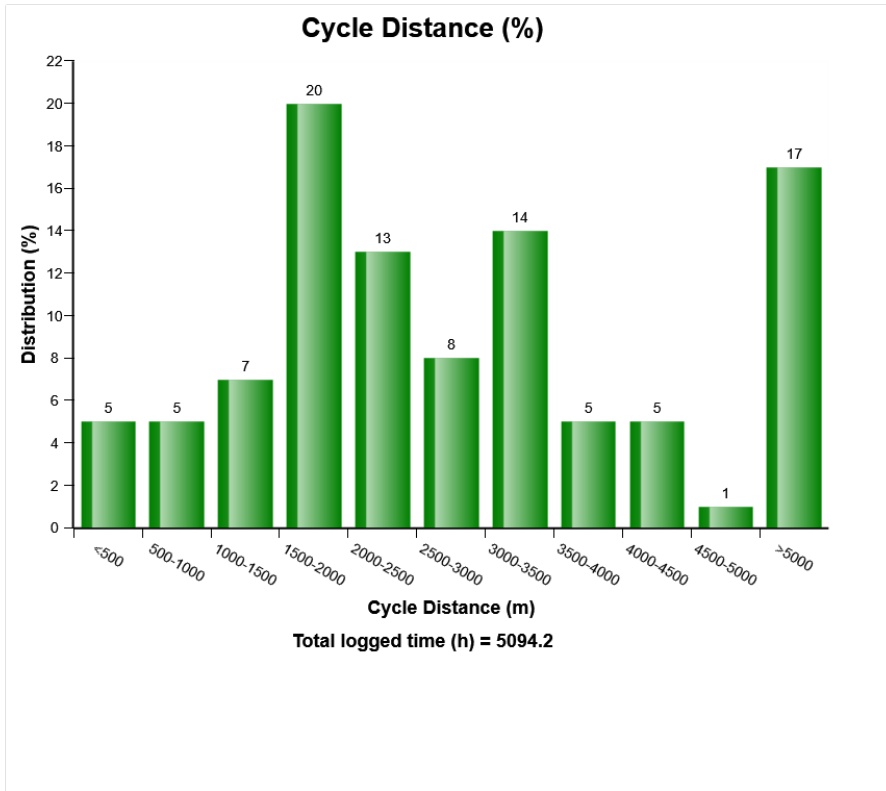
### Average fuel consumption



Machine model	SerialNo	Operating Hours	Reading Date
A25G	740245	5130.8	08/03/2020

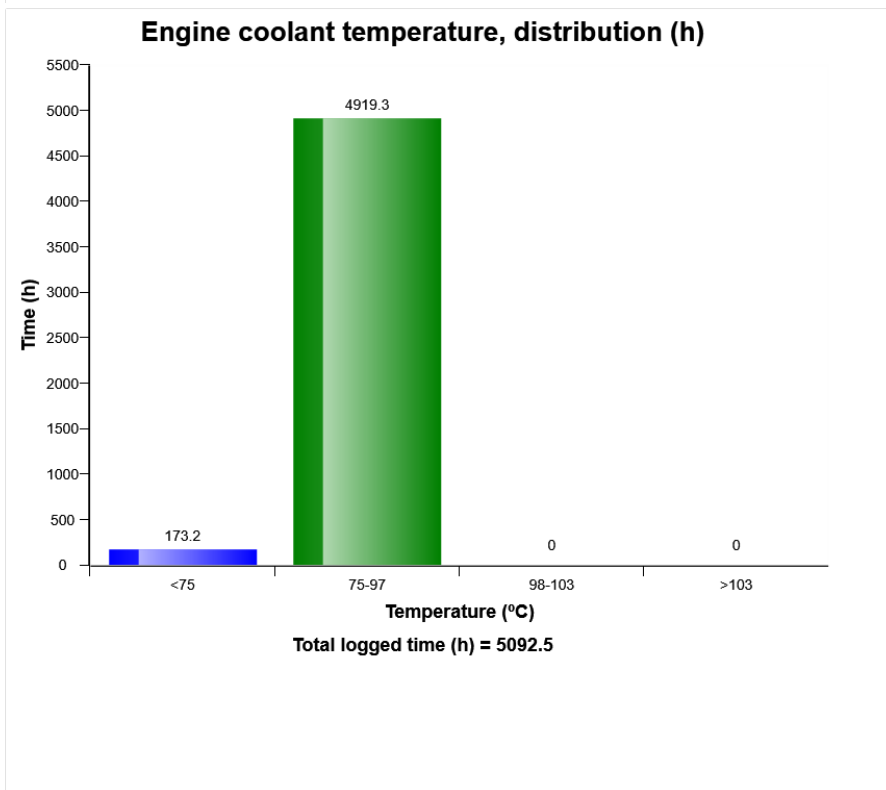
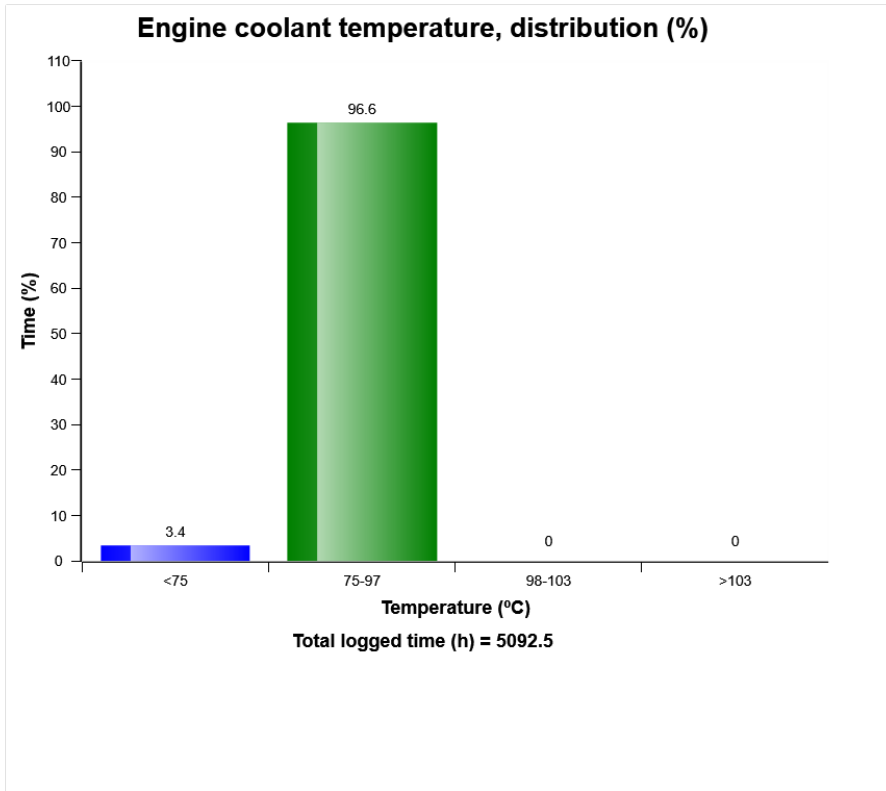


Machine model	SerialNo	Operating Hours	Reading Date
A25G	740245	5130.8	08/03/2020

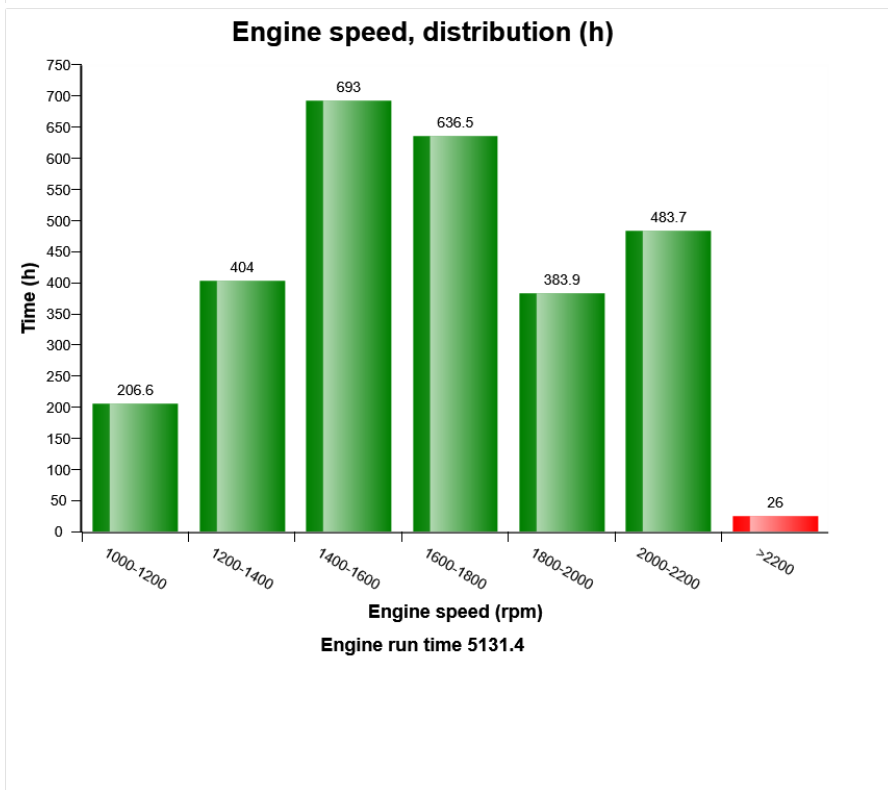
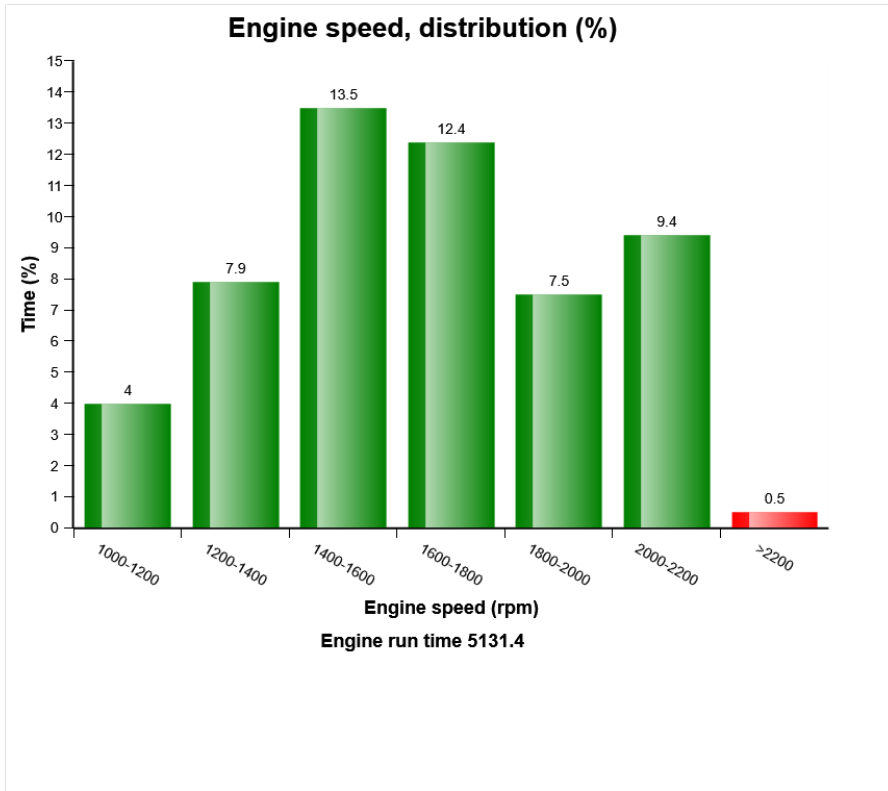




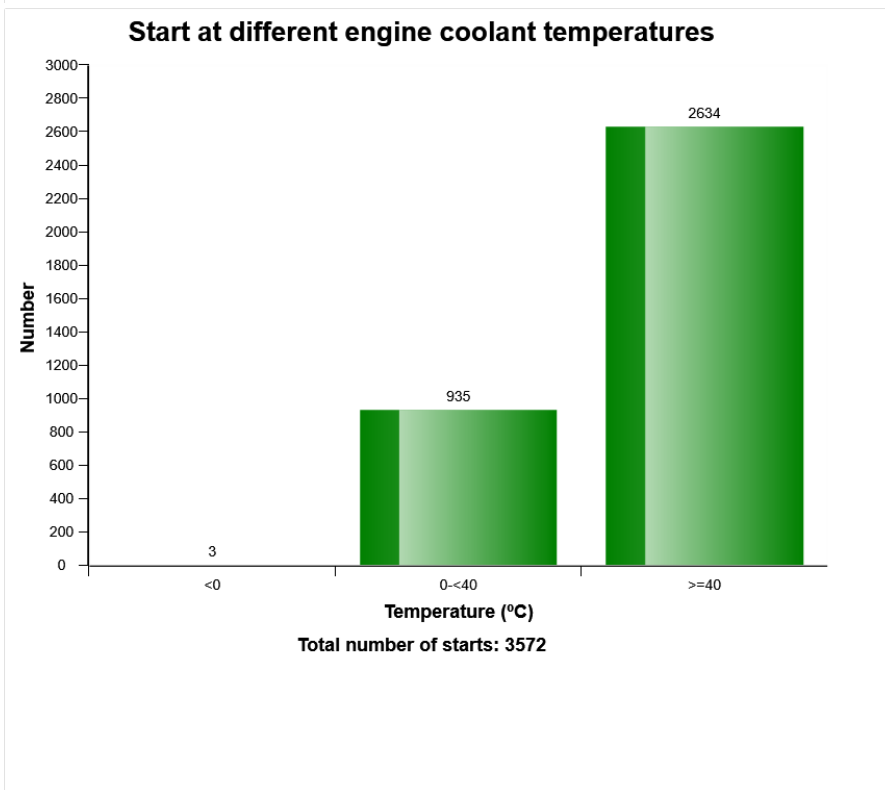
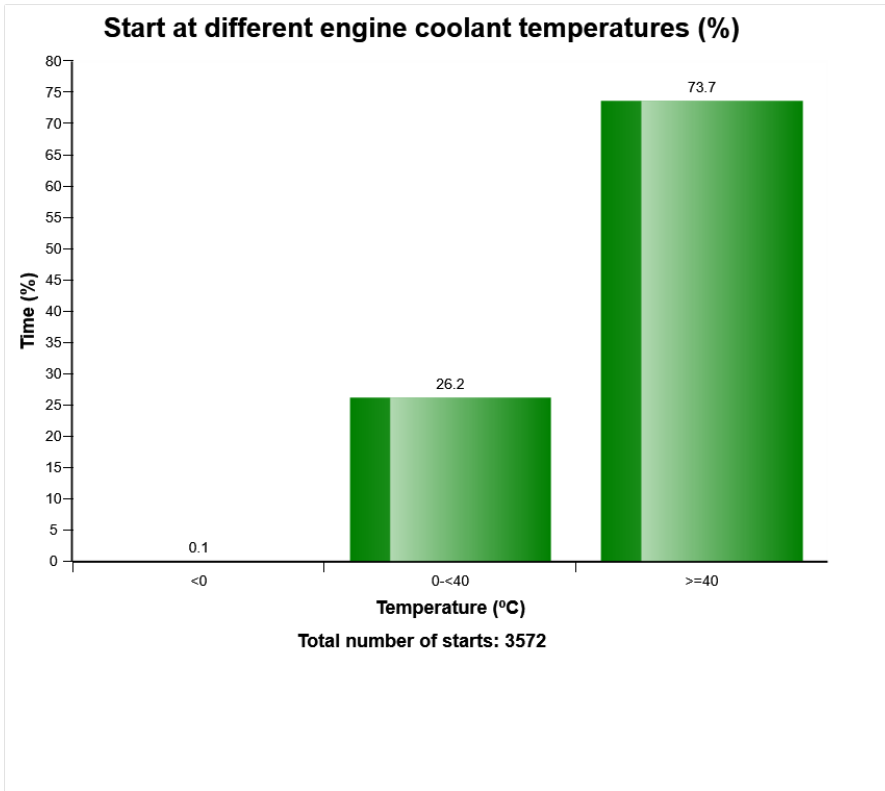
Machine model	SerialNo	Operating Hours	Reading Date
A25G	740245	5130.8	08/03/2020



Machine model	SerialNo	Operating Hours	Reading Date
A25G	740245	5130.8	08/03/2020

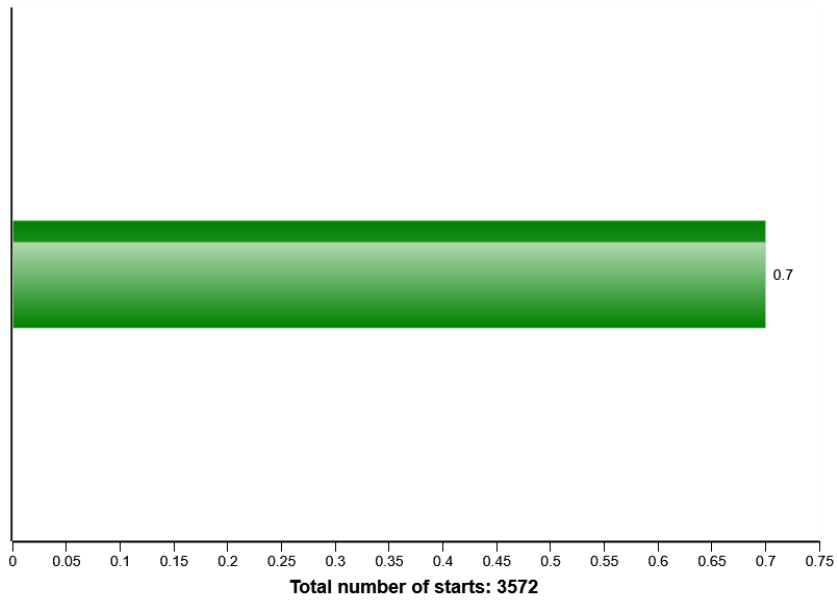


Machine model	SerialNo	Operating Hours	Reading Date
A25G	740245	5130.8	08/03/2020

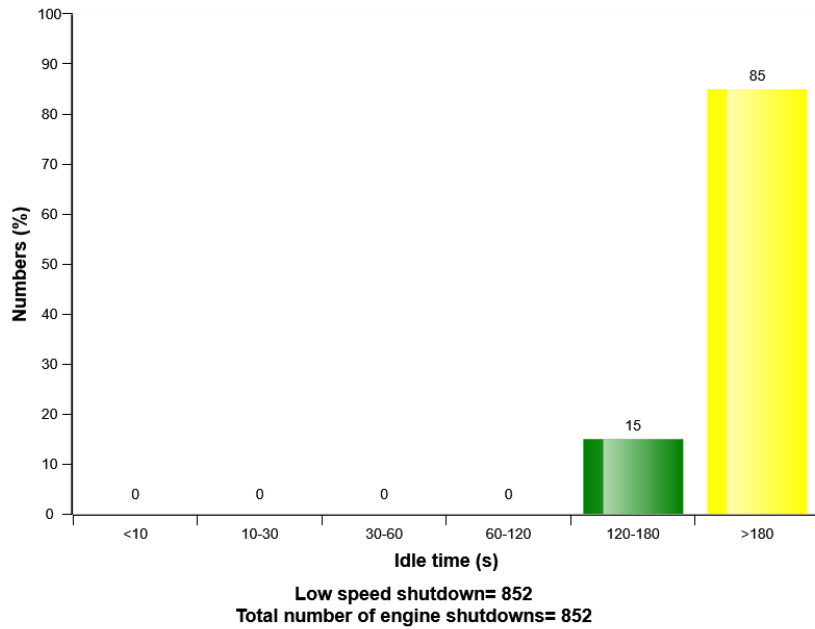


Machine model	SerialNo	Operating Hours	Reading Date
A25G	740245	5130.8	08/03/2020

### Average number of starts per hour



### Idle time before shut down (%)



Machine model	SerialNo	Operating Hours	Reading Date
A25G	740245	5130.8	08/03/2020

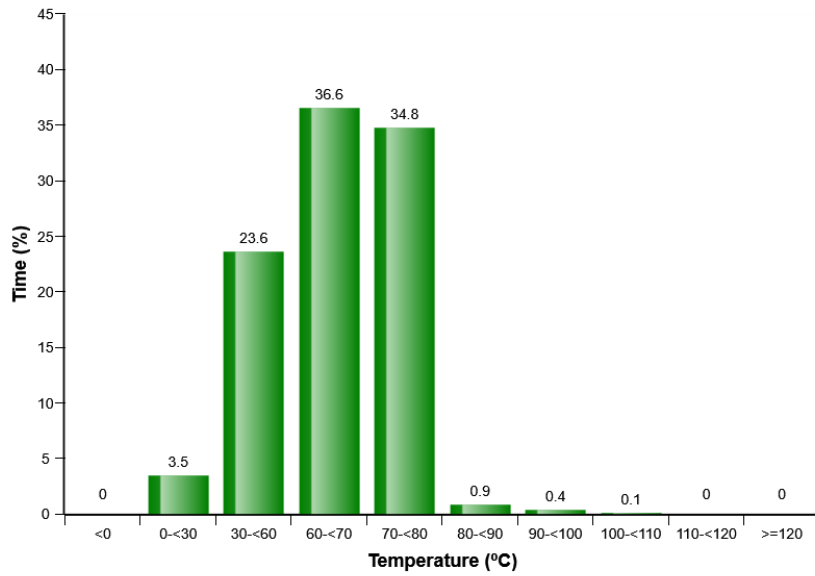
**Low voltage**  
**Total number of occurrences = 2**

Op hours	Year	Month	Day	Hour	Minute	Duration (sec)	Extreme value
2707	2018	3	21	18	16	9	18.6
2707	2018	3	21	19	44	9	17.8
0	2000	0	0	0	0	0	0.0
0	2000	0	0	0	0	0	0.0
0	2000	0	0	0	0	0	0.0
0	2000	0	0	0	0	0	0.0
0	2000	0	0	0	0	0	0.0
0	2000	0	0	0	0	0	0.0
0	2000	0	0	0	0	0	0.0
0	2000	0	0	0	0	0	0.0
0	2000	0	0	0	0	0	0.0
0	2000	0	0	0	0	0	0.0
0	2000	0	0	0	0	0	0.0
0	2000	0	0	0	0	0	0.0
0	2000	0	0	0	0	0	0.0
0	2000	0	0	0	0	0	0.0
0	2000	0	0	0	0	0	0.0
0	2000	0	0	0	0	0	0.0
0	2000	0	0	0	0	0	0.0
0	2000	0	0	0	0	0	0.0
0	2000	0	0	0	0	0	0.0
0	2000	0	0	0	0	0	0.0
0	2000	0	0	0	0	0	0.0
0	2000	0	0	0	0	0	0.0
0	2000	0	0	0	0	0	0.0

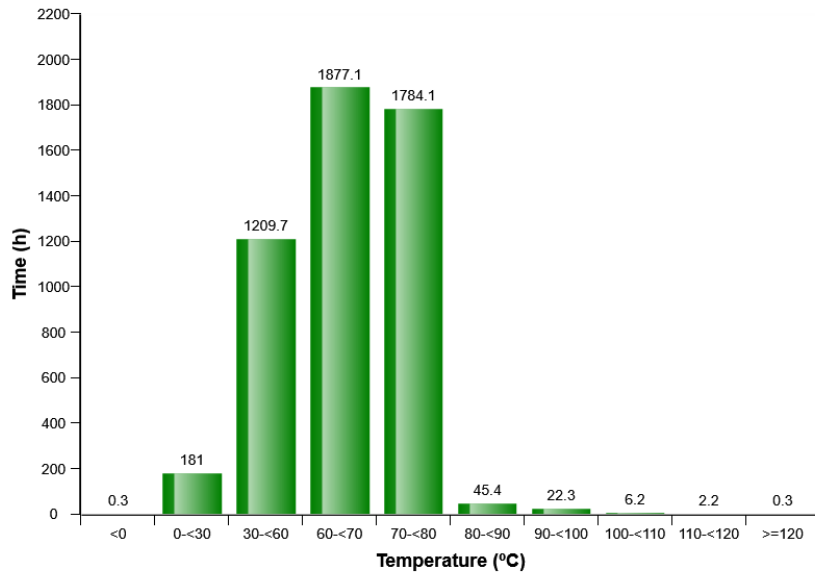


Machine model	SerialNo	Operating Hours	Reading Date
A25G	740245	5130.8	08/03/2020

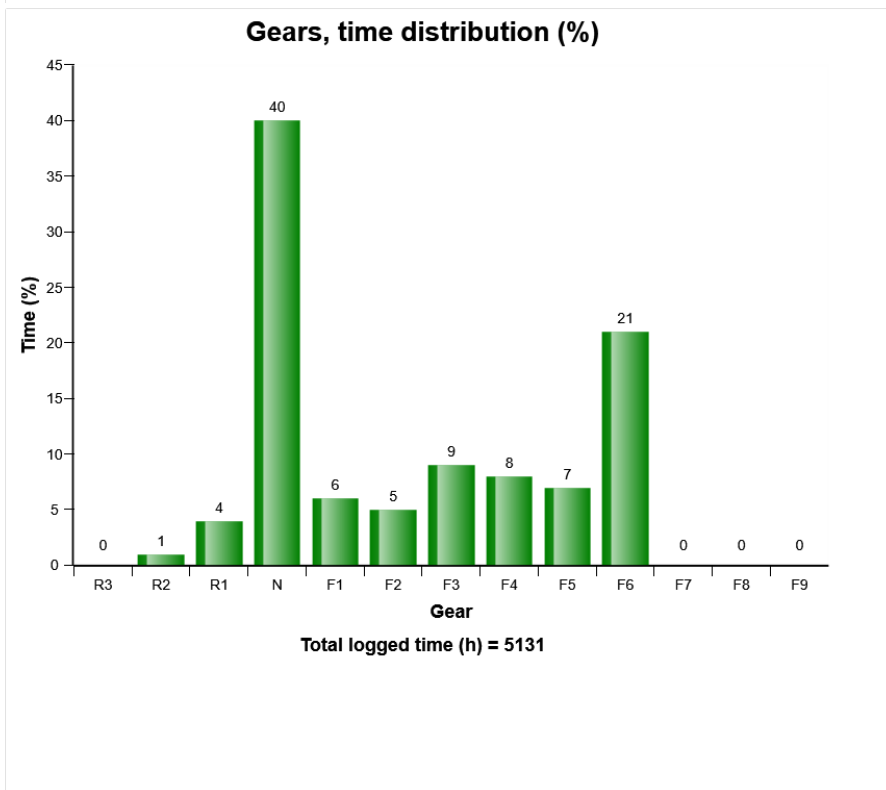
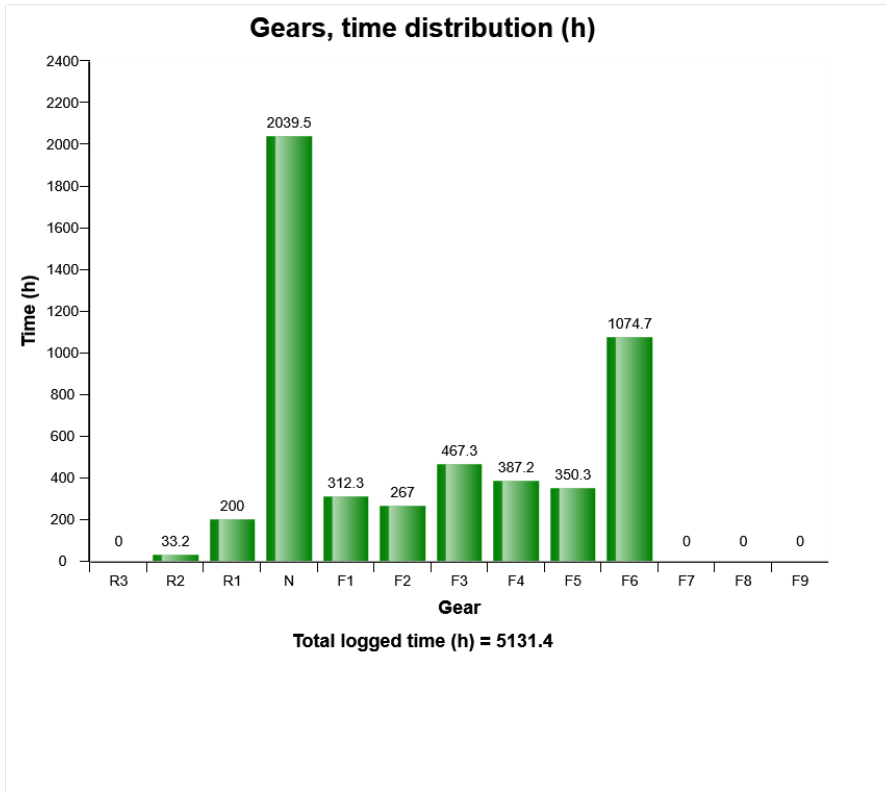
**Transmission oil, temperature distribution (%)**



**Transmission oil, temperature distribution (h)**

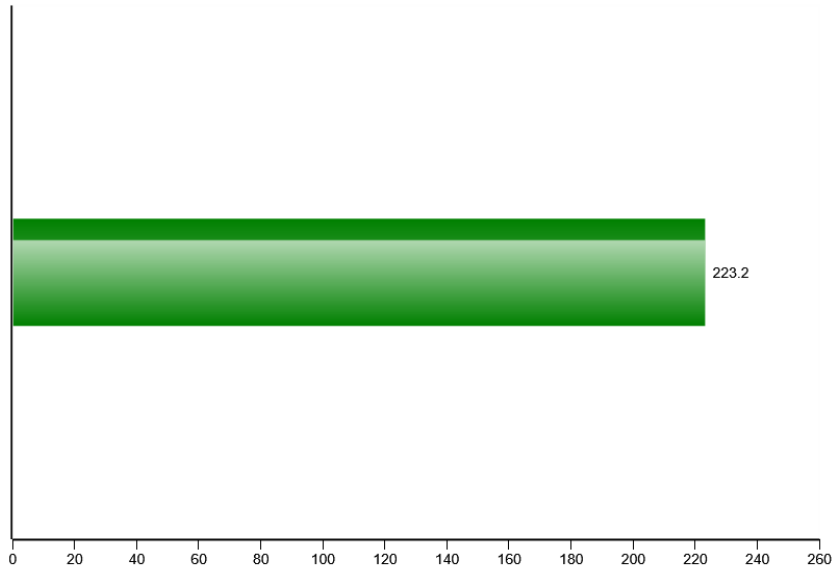


Machine model	SerialNo	Operating Hours	Reading Date
A25G	740245	5130.8	08/03/2020

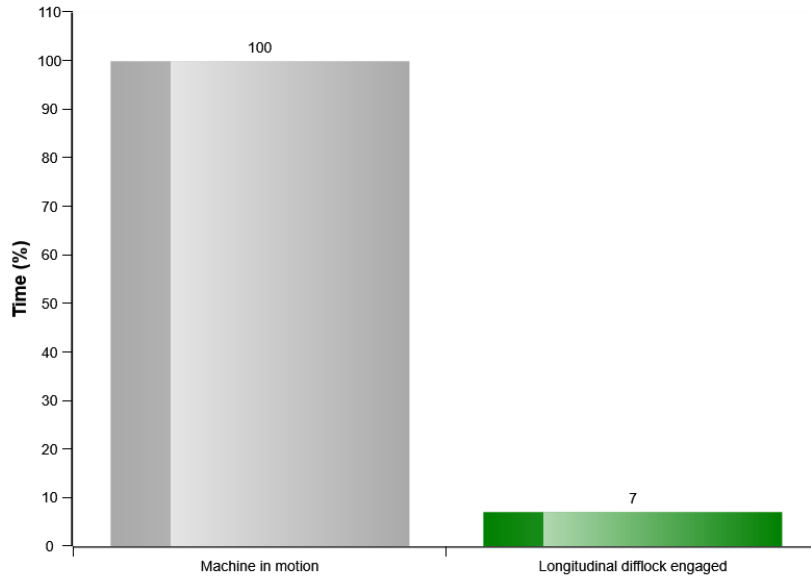


Machine model	SerialNo	Operating Hours	Reading Date
A25G	740245	5130.8	08/03/2020

**Longitudinal difflock engaged (h)**



**Longitudinal difflock use related to machine in motion (%)**





Machine model	SerialNo	Operating Hours	Reading Date
A25G	740245	5130.8	08/03/2020

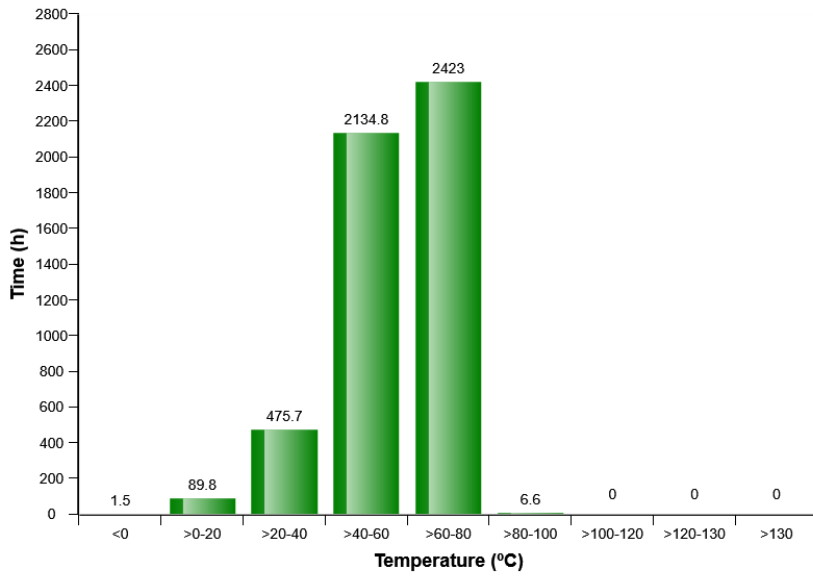
**Transmission oil pressure low  
Total number of occurrences = 127**

Op hours	Year	Month	Day	Hour	Minute	Duration (sec)	Extreme (bar)
3951	2019	2	4	11	23	0	66.7
3953	2019	2	4	15	0	0	69.6
3983	2019	2	11	11	18	0	88.3
4174	2019	4	9	10	57	10	100.4
4183	2019	4	10	15	16	0	95.2
4202	2019	4	13	11	33	0	61.9
4258	2019	4	27	14	36	10	84.6
4293	2019	5	4	7	56	0	72.5
4365	2019	5	16	11	32	0	111.7
4706	2019	8	2	10	54	0	68.1
4708	2019	8	5	8	34	0	94.5
4814	2019	8	23	11	16	0	76.2
4874	2019	9	6	10	52	0	82.4
4877	2019	9	9	9	29	0	65.2
4878	2019	9	9	11	8	0	71.4
4914	2019	9	16	8	58	0	84.2
4964	2019	9	24	8	49	0	94.1
4971	2019	9	24	15	4	0	87.5
5017	2019	11	7	9	16	10	70.3
5022	2019	11	7	15	9	10	64.5

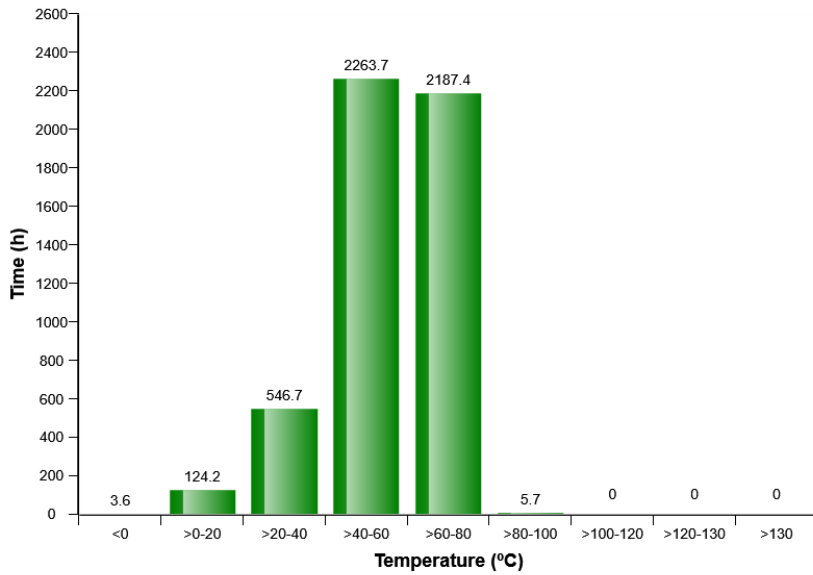


Machine model	SerialNo	Operating Hours	Reading Date
A25G	740245	5130.8	08/03/2020

### Service brake cooling oil, front axle temperature

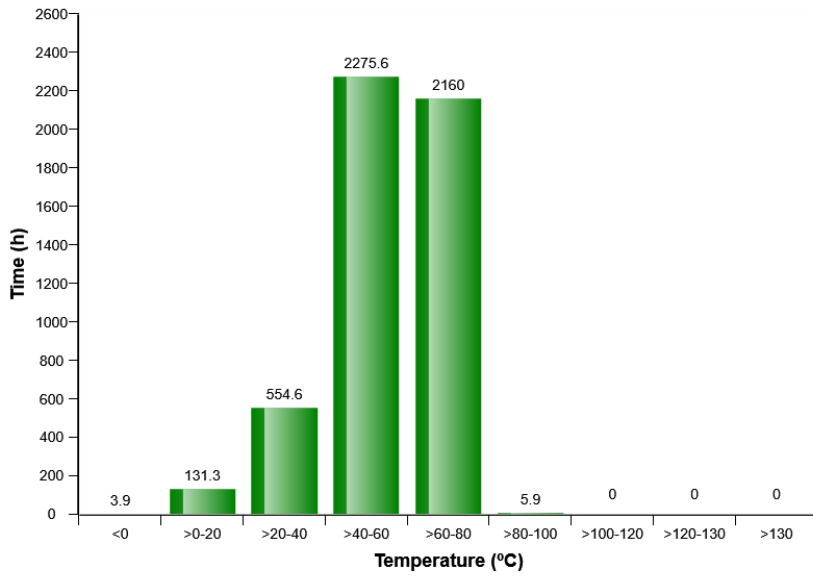


### Service brake cooling oil, first bogie axle temperature

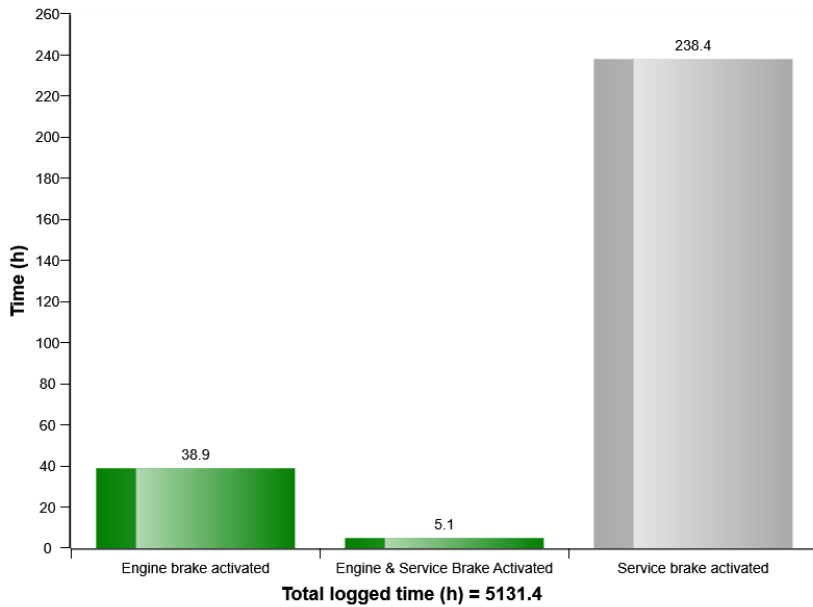


Machine model	SerialNo	Operating Hours	Reading Date
A25G	740245	5130.8	08/03/2020

### Service brake cooling oil, second bogie axle temperature



### Brake Usage (h)



Machine model	SerialNo	Operating Hours	Reading Date
A25G	740245	5130.8	08/03/2020

**Low Brake Servo Pressure**  
**Total number of occurrences = 1**

	Op hours	Year	Month	Day	Hour	Minute	Duration (sec)
<b>B</b>	0	2000	0	0	0	0	0
<b>C</b>	0	2000	0	0	0	0	0
<b>D</b>	0	2000	0	0	0	0	0
<b>E</b>	0	2000	0	0	0	0	0
<b>F</b>	0	2000	0	0	0	0	0
<b>G</b>	0	2000	0	0	0	0	0
<b>H</b>	0	2000	0	0	0	0	0
<b>I</b>	0	2000	0	0	0	0	0
<b>J</b>	0	2000	0	0	0	0	0
<b>A</b>	3	2016	3	31	16	15	0



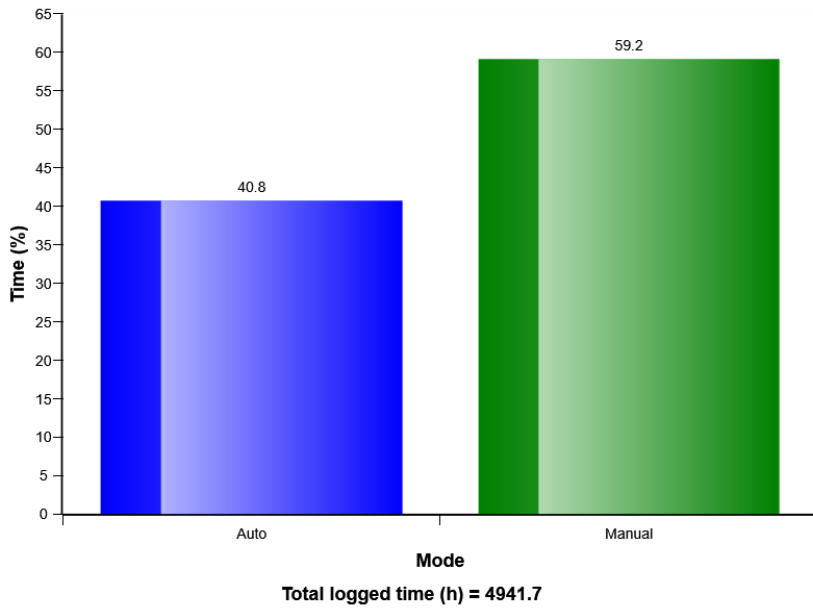
**Extreme  
(bar)**

0
0
0
0
0
0
0
0
0
0
148

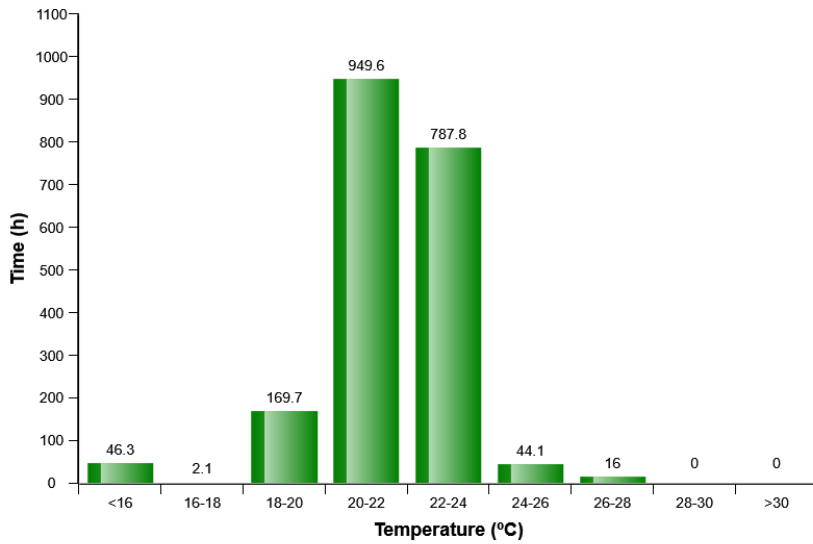


Machine model	SerialNo	Operating Hours	Reading Date
A25G	740245	5130.8	08/03/2020

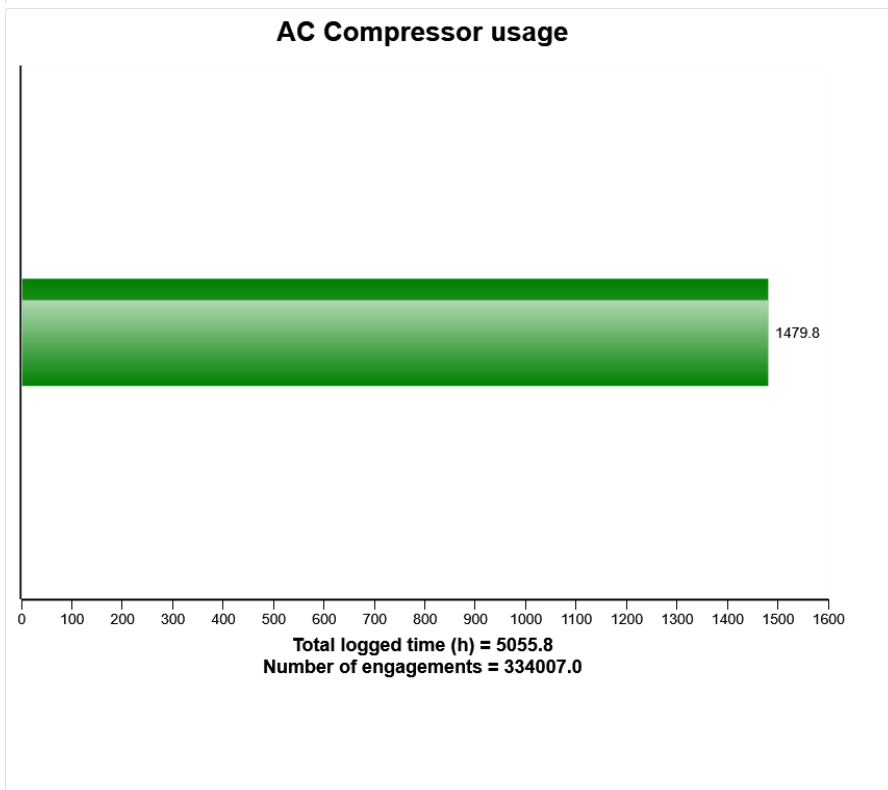
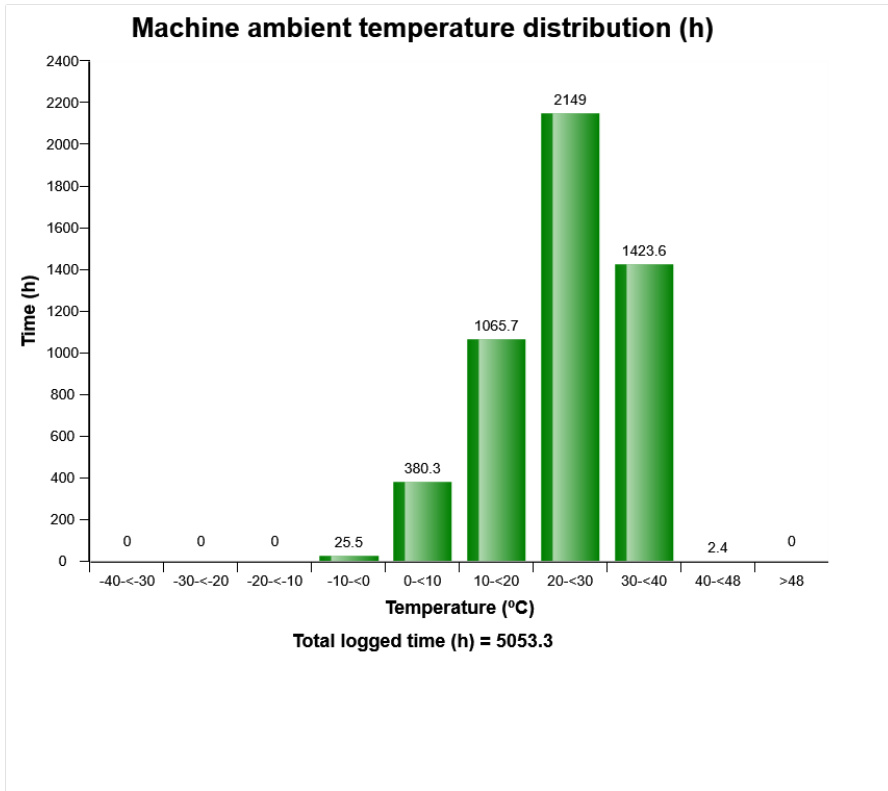
### HVAC Auto - Manual mode selection distribution (%)



### HVAC air temperature setting in auto control mode distribution (h)

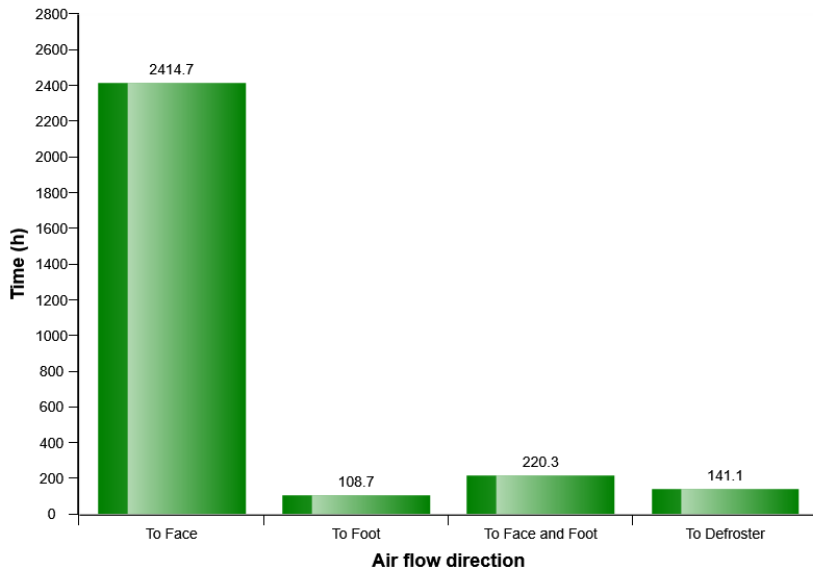


Machine model	SerialNo	Operating Hours	Reading Date
A25G	740245	5130.8	08/03/2020

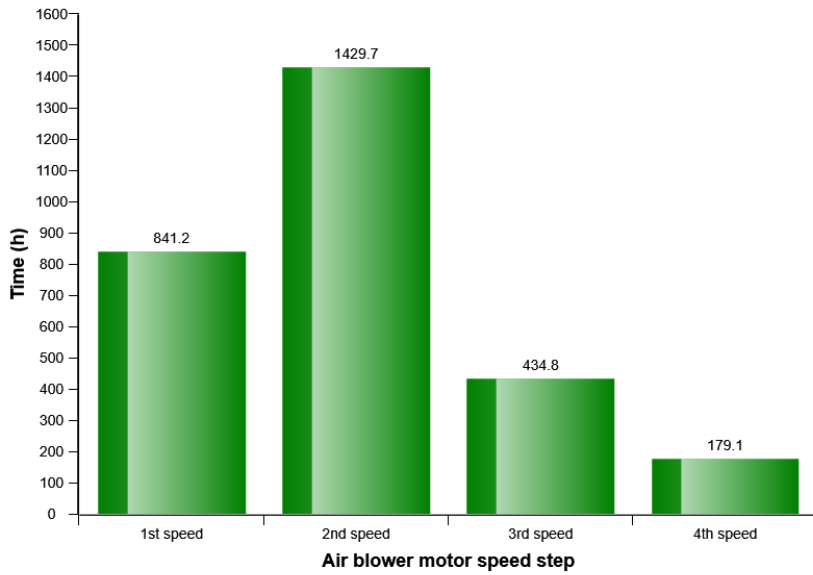


Machine model	SerialNo	Operating Hours	Reading Date
A25G	740245	5130.8	08/03/2020

### HVAC air flow direction in manual mode distribution (h)



### HVAC air blower motor speed in manual mode distribution (h)





Machine model	SerialNo	Operating Hours	Reading Date
A25G	740245	5130.8	08/03/2020

**AC High Pressure**  
**Total number of occurrences = 302**

Op hours	Year	Month	Day	Hour	Minute	Duration (sec)	Extreme (° C)
3154	2018	7	2	23	44	61	32
3183	2018	7	9	23	46	48	32
3191	2018	7	10	23	48	64	34
3207	2018	7	12	23	43	65	34
3239	2018	7	18	13	0	88	28
3274	2018	8	5	13	14	116	36
3453	2018	9	11	13	5	76	31
3481	2018	9	14	15	7	89	35
3503	2018	9	20	12	59	119	33
4367	2019	5	16	15	24	12	28
4455	2019	6	4	13	4	46	31
4579	2019	7	3	13	5	54	33
4619	2019	7	15	12	57	156	36
4697	2019	7	31	14	24	5	35
4744	2019	8	12	13	3	150	34
4862	2019	9	4	15	57	13	37
4976	2019	9	25	13	5	68	34
4976	2019	9	25	11	20	58	32
4985	2019	9	26	12	51	305	34
4986	2019	9	26	14	22	49	35



Machine model	SerialNo	Operating Hours	Reading Date
A25G	740245	5130.8	08/03/2020

**AC System Cut Out Pressure**  
**Total number of occurrences = 10**

Op hours	Year	Month	Day	Hour	Minute	Duration (sec)	Extreme (° C)
0	2255	11	5	2	57	1022485252	30
0	2000	0	0	0	0	0	0
0	2000	0	0	0	0	0	0
0	2000	0	0	0	0	0	0
0	2000	0	0	0	0	0	0
0	2000	0	0	0	0	0	0
0	2000	0	0	0	0	0	0
0	2000	0	0	0	0	0	0
0	2000	0	0	0	0	0	0
0	2000	0	0	0	0	0	0
0	2000	0	0	0	0	0	0
0	2000	0	0	0	0	0	0
15	2016	6	24	3	1	7	38
15	2016	6	24	2	54	28	38
16	2016	6	24	3	13	5	38
38	2016	6	30	2	36	8	32
1575	2017	6	15	16	0	5	32
1752	2017	7	19	16	8	5	26
1775	2017	7	24	11	19	12	36
1775	2017	7	24	11	16	35	35
1775	2017	7	24	11	20	21	35



Machine model	SerialNo	Operating Hours	Reading Date
A25G	740245	5130.8	08/03/2020

