

VOLVO CONSTRUCTION EQUIPMENT MATRIS REPORT

Machine model A40G	SerialNo 341067	Operating Hours 4968.8	Reading Date 25/02/2019
Company name Tomahawk const FT Myers FL	Dealer	Report Issuer	
Contact name	Technician rhilton	Primary Application Quarries	
Site	Workorder	Ground Condition	

MATRIS Reading, Summary / Recommendation

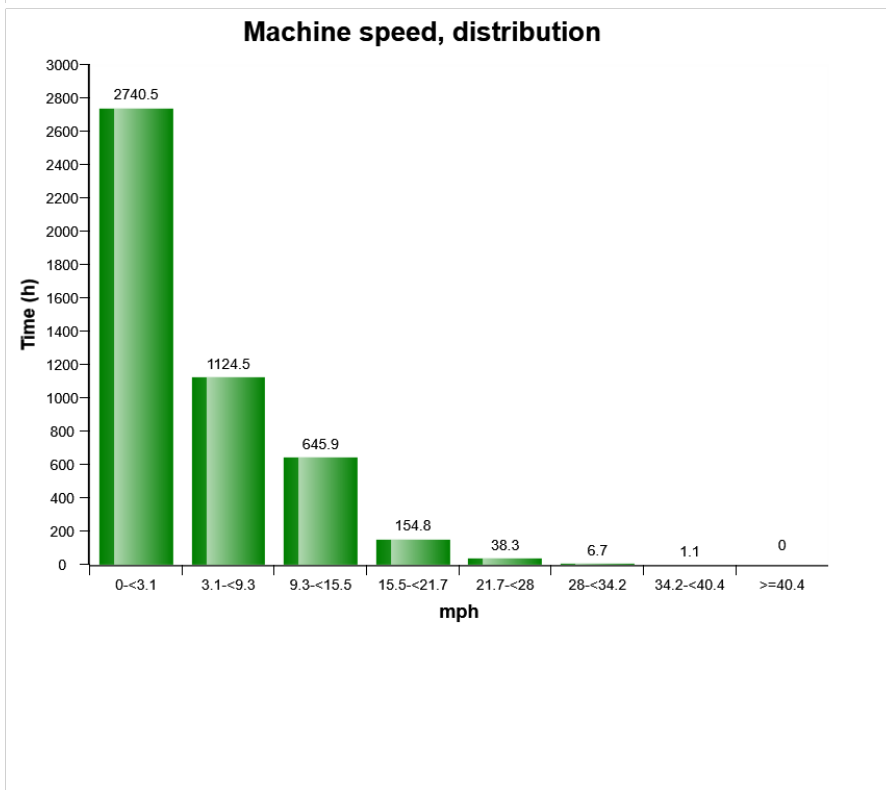
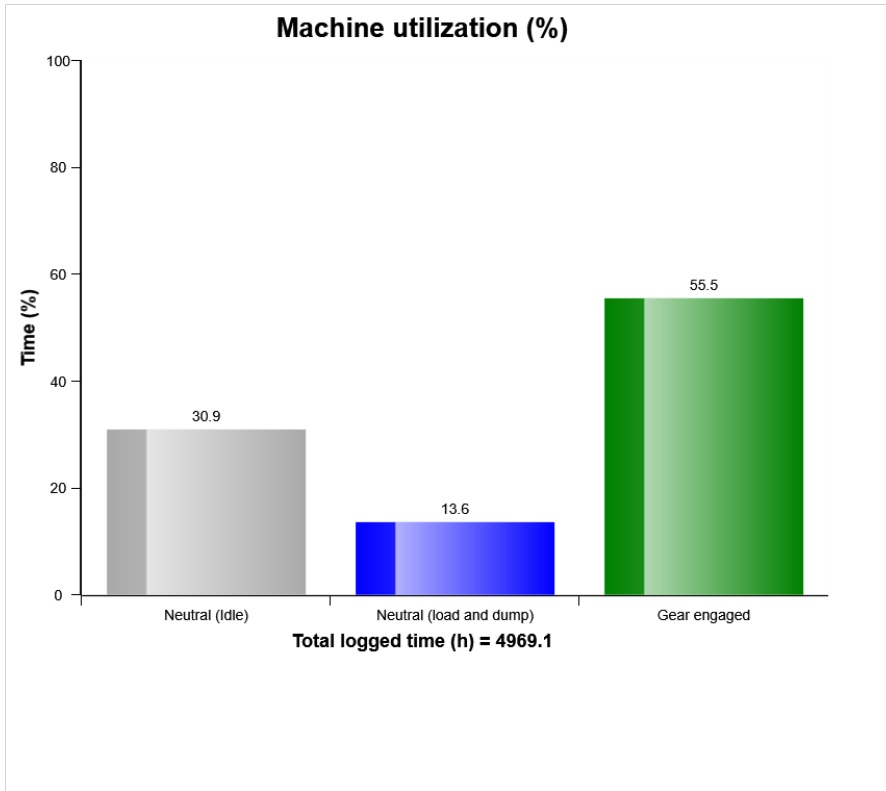


Machine model	SerialNo	Operating Hours	Reading Date
A40G	341067	4968.8	25/02/2019

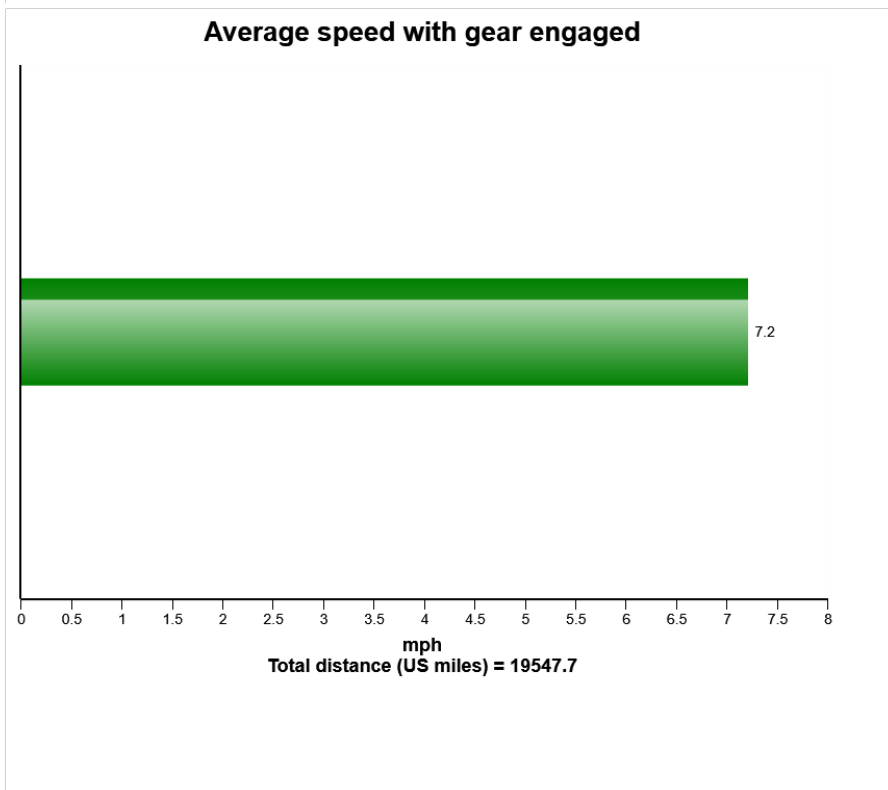
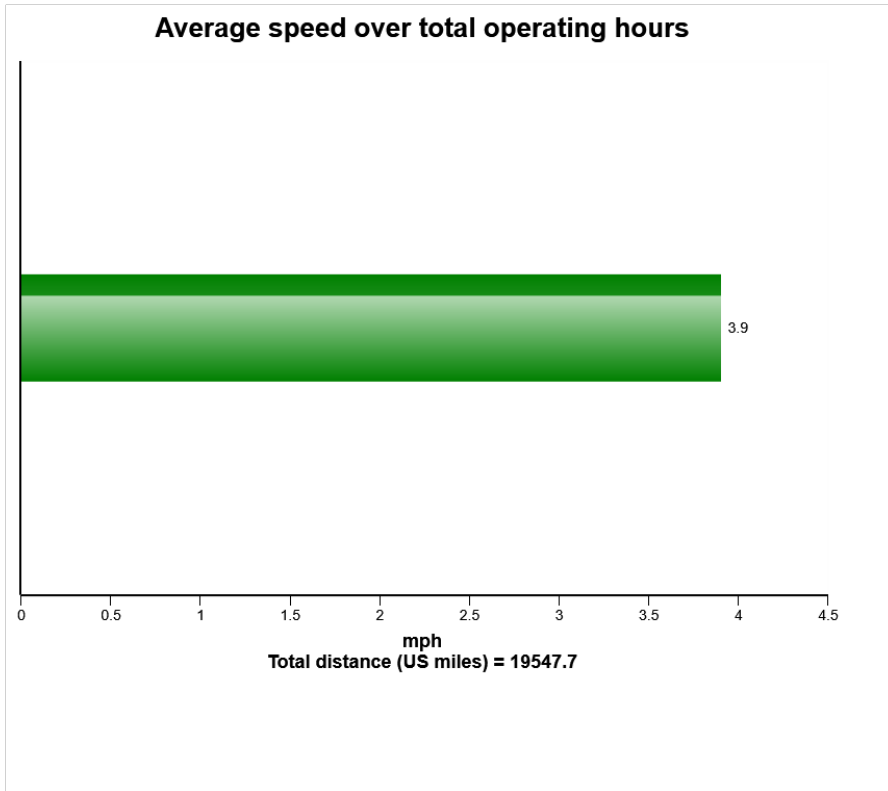
Main equipment	Type	Equipment
	Tyre size/class	Sold without tyres
	Body extensions	Not mounted
	Tail-gate	Not mounted
	Extra spillguard	Not mounted
	Wear plates	Not mounted
	Pattern	None



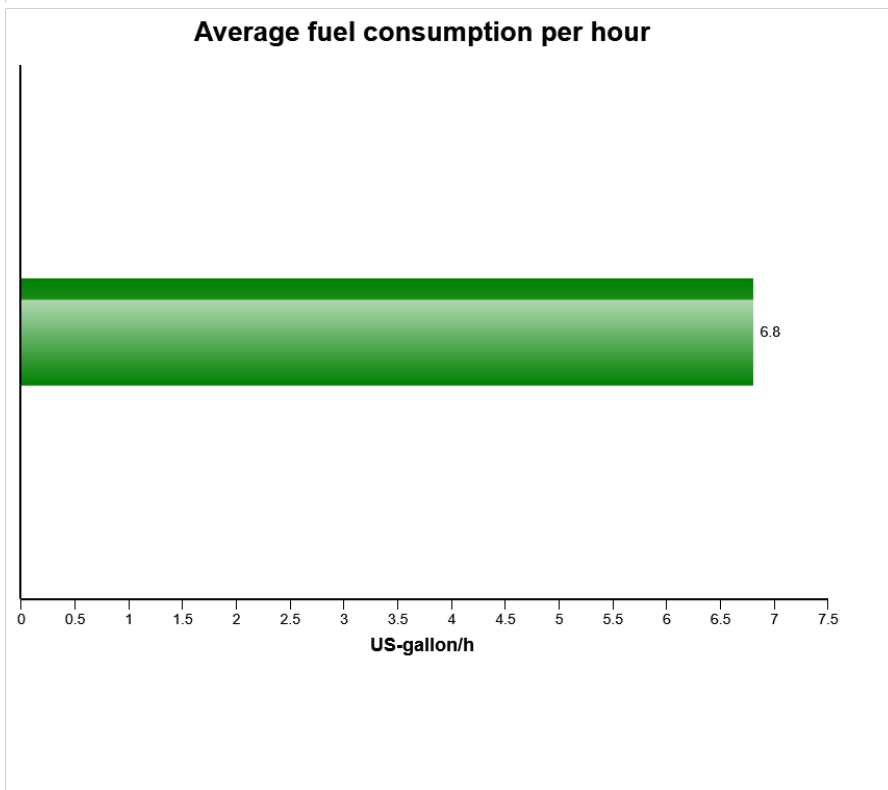
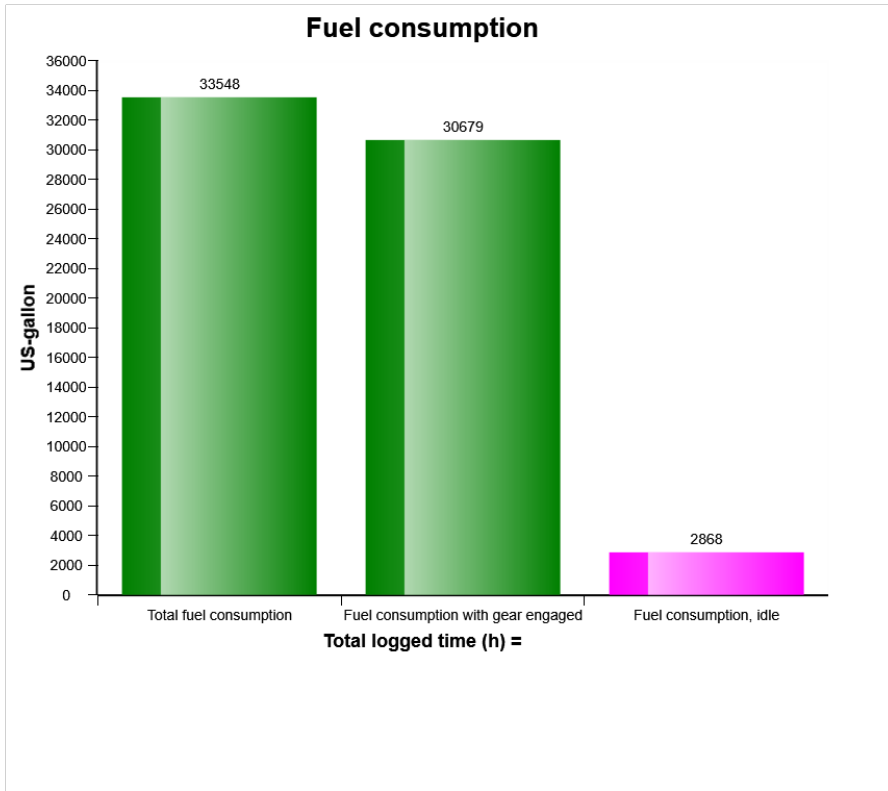
Machine model	SerialNo	Operating Hours	Reading Date
A40G	341067	4968.8	25/02/2019



Machine model	SerialNo	Operating Hours	Reading Date
A40G	341067	4968.8	25/02/2019

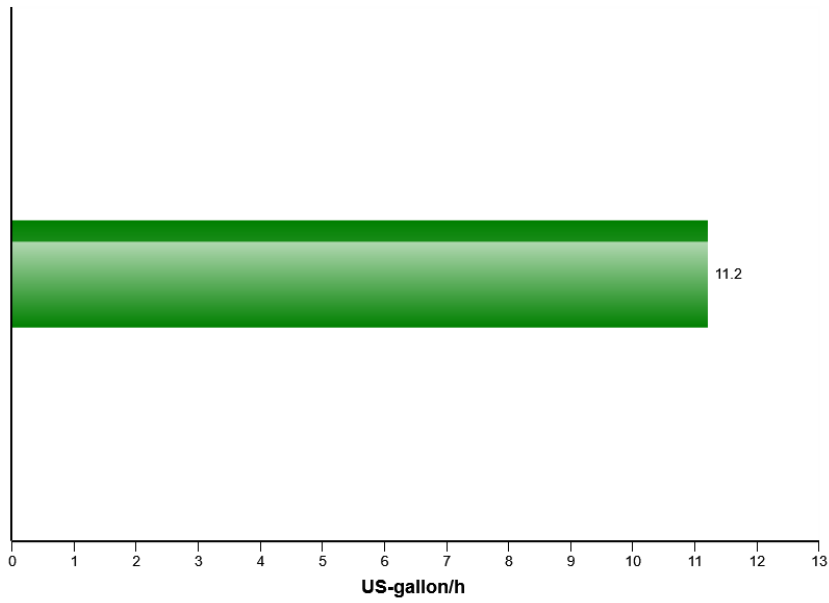


Machine model	SerialNo	Operating Hours	Reading Date
A40G	341067	4968.8	25/02/2019

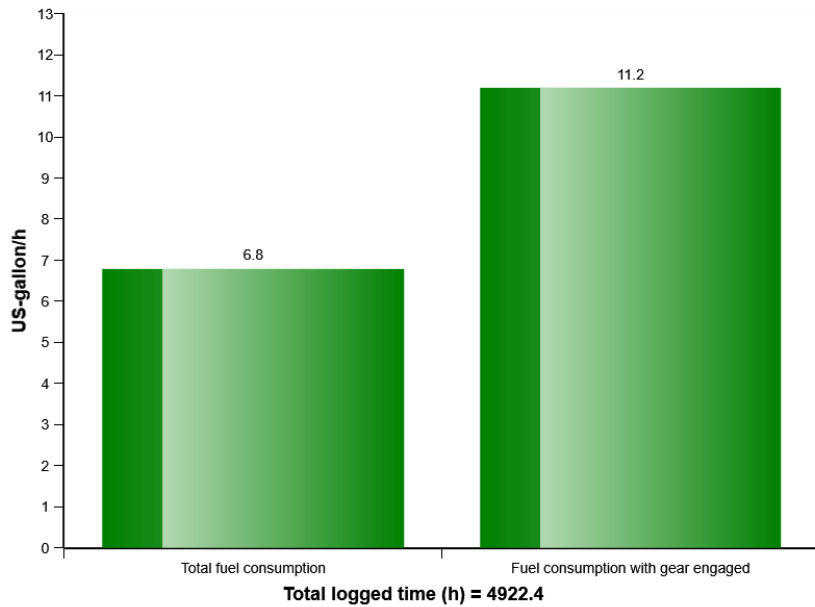


Machine model	SerialNo	Operating Hours	Reading Date
A40G	341067	4968.8	25/02/2019

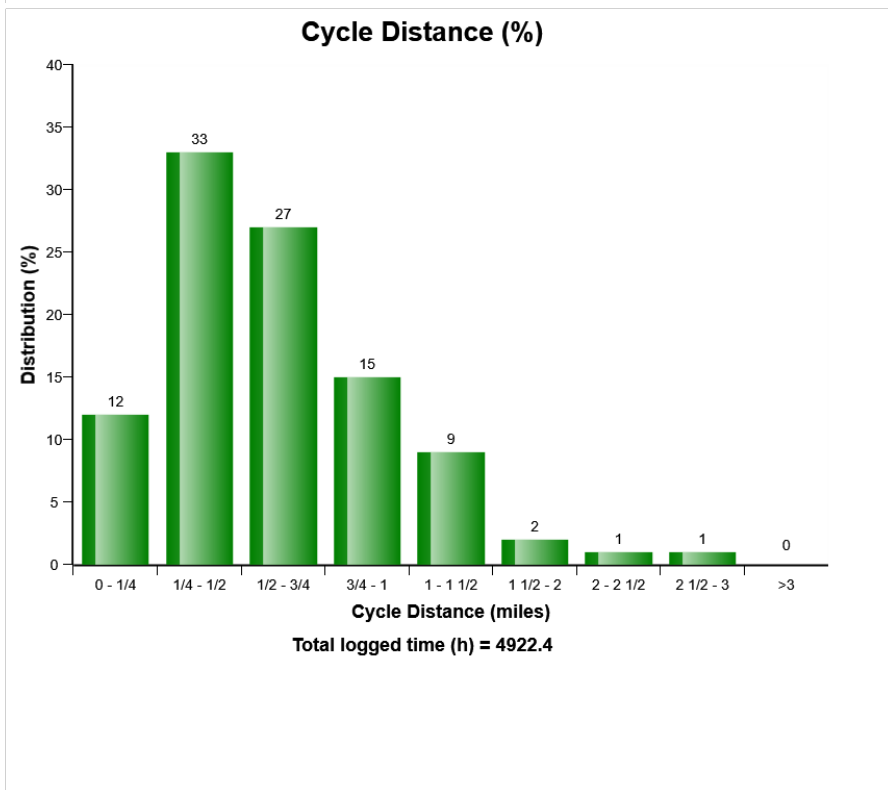
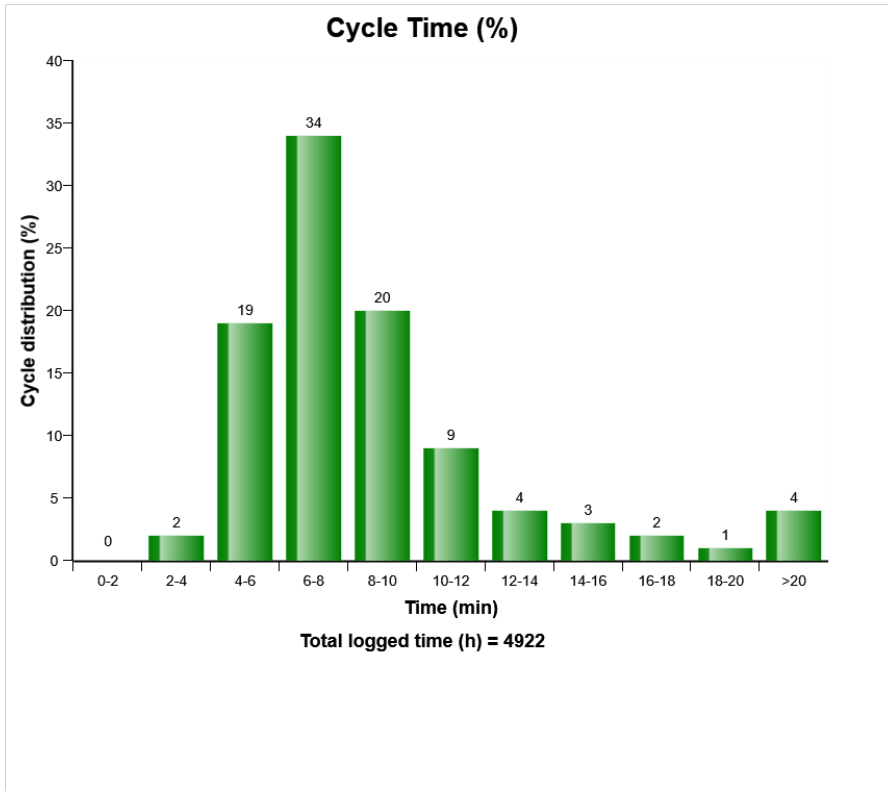
Average fuel consumption per hour with gear engaged



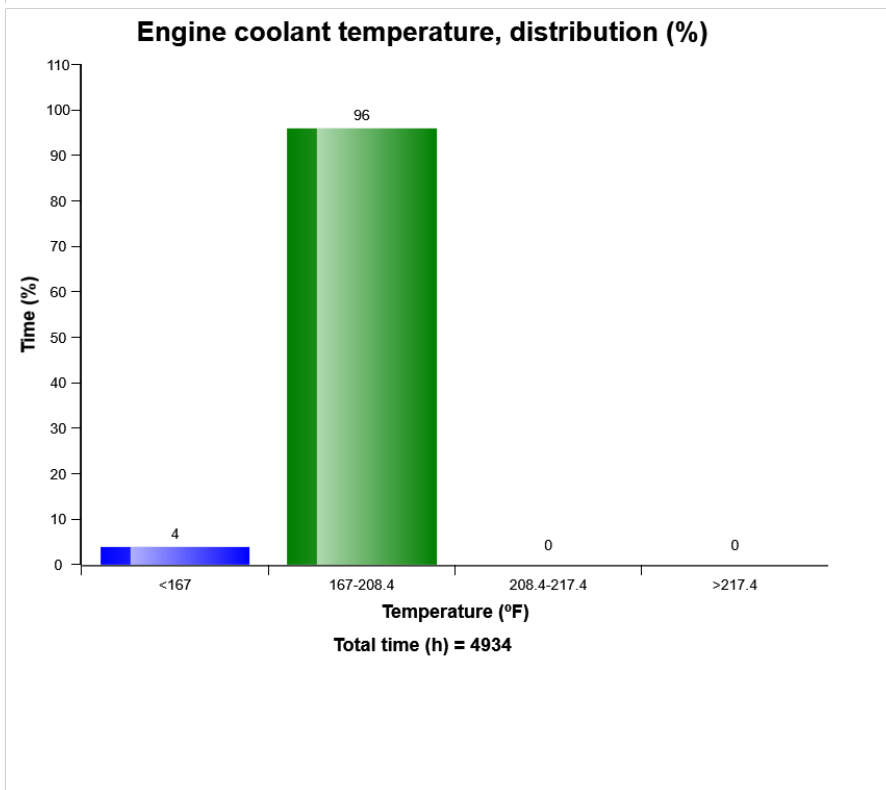
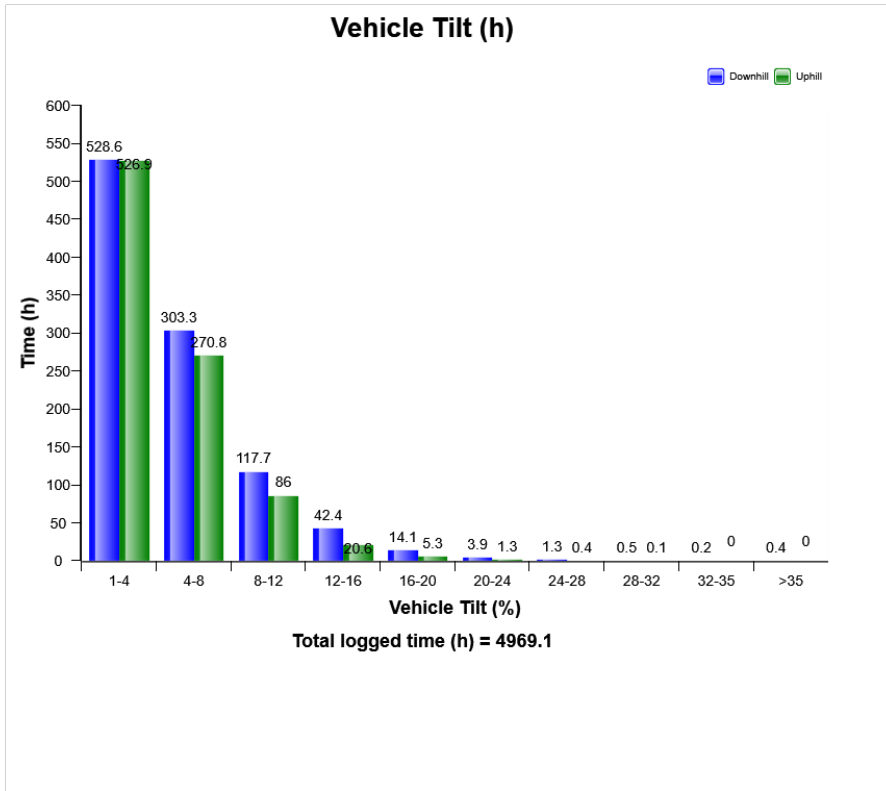
Average fuel consumption



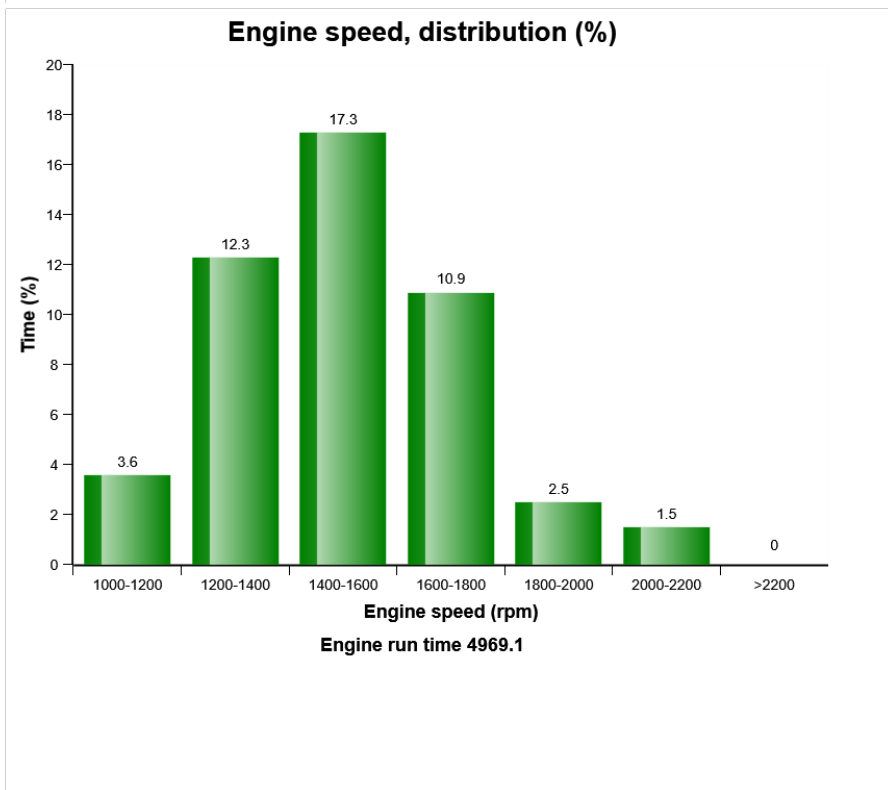
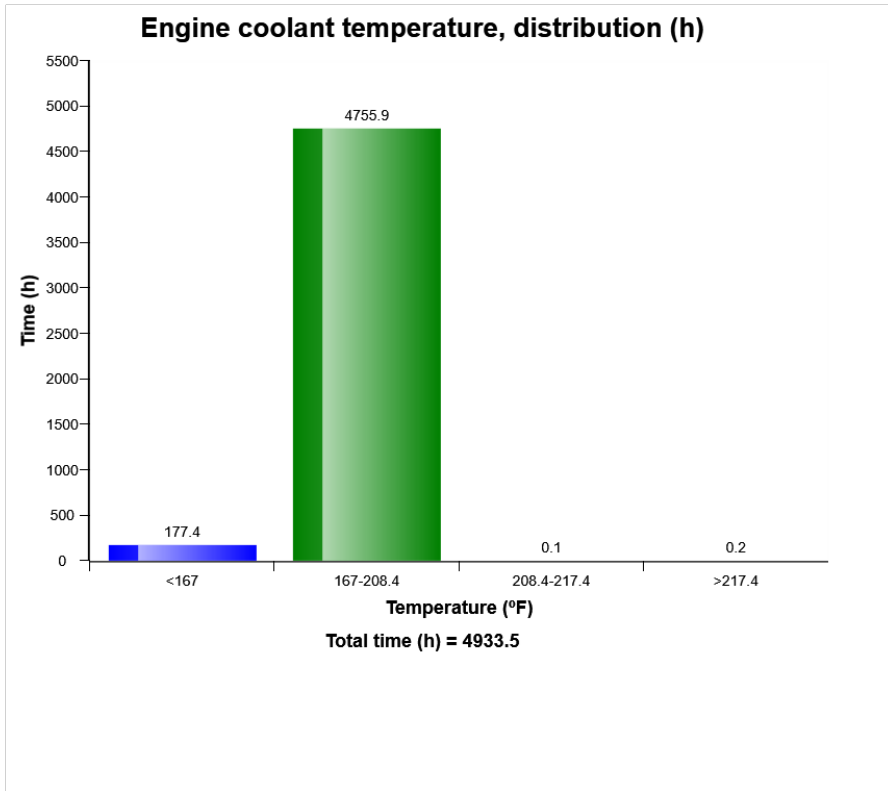
Machine model	SerialNo	Operating Hours	Reading Date
A40G	341067	4968.8	25/02/2019



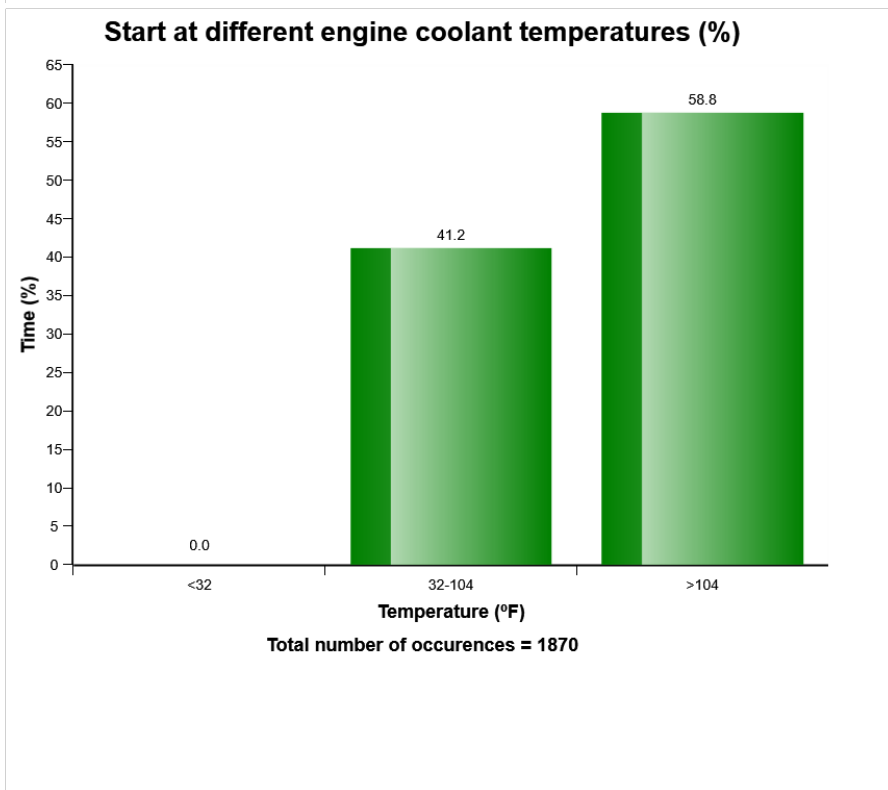
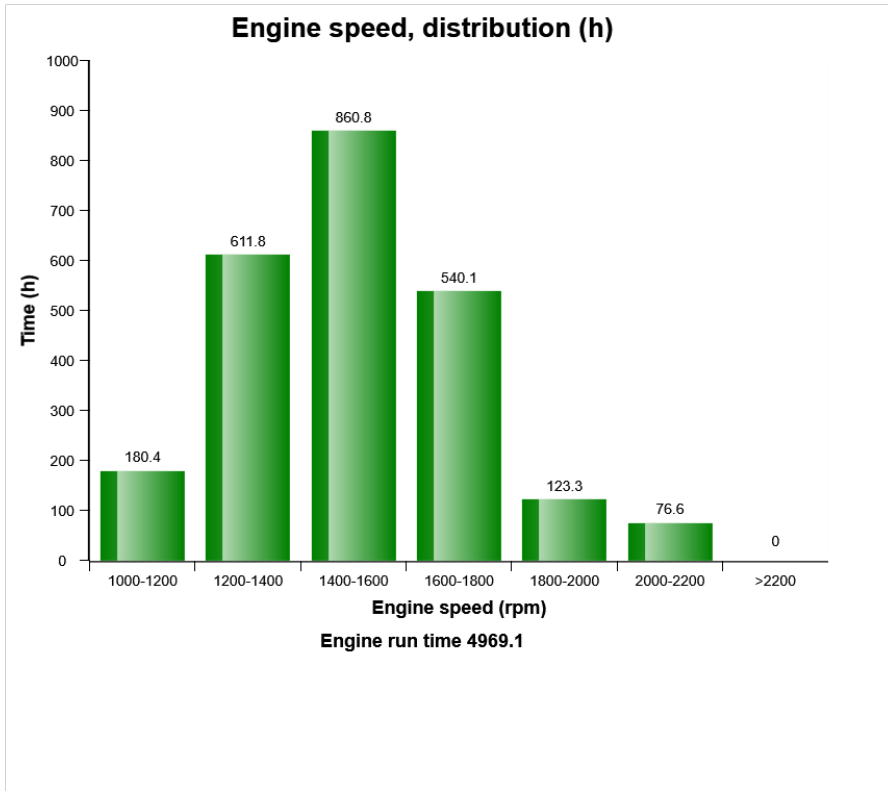
Machine model	SerialNo	Operating Hours	Reading Date
A40G	341067	4968.8	25/02/2019



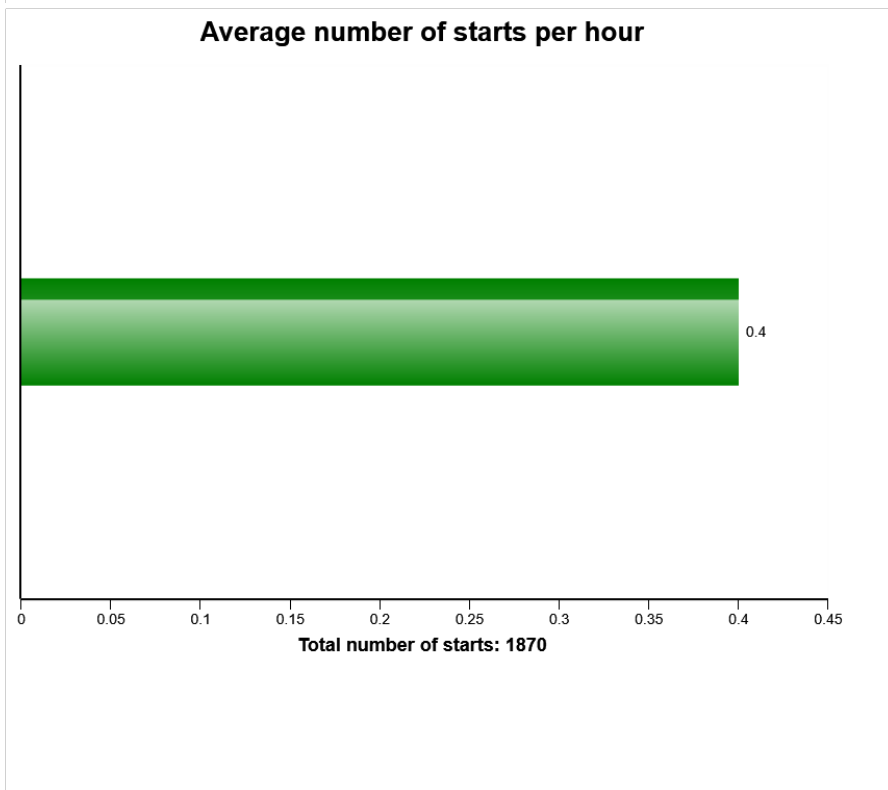
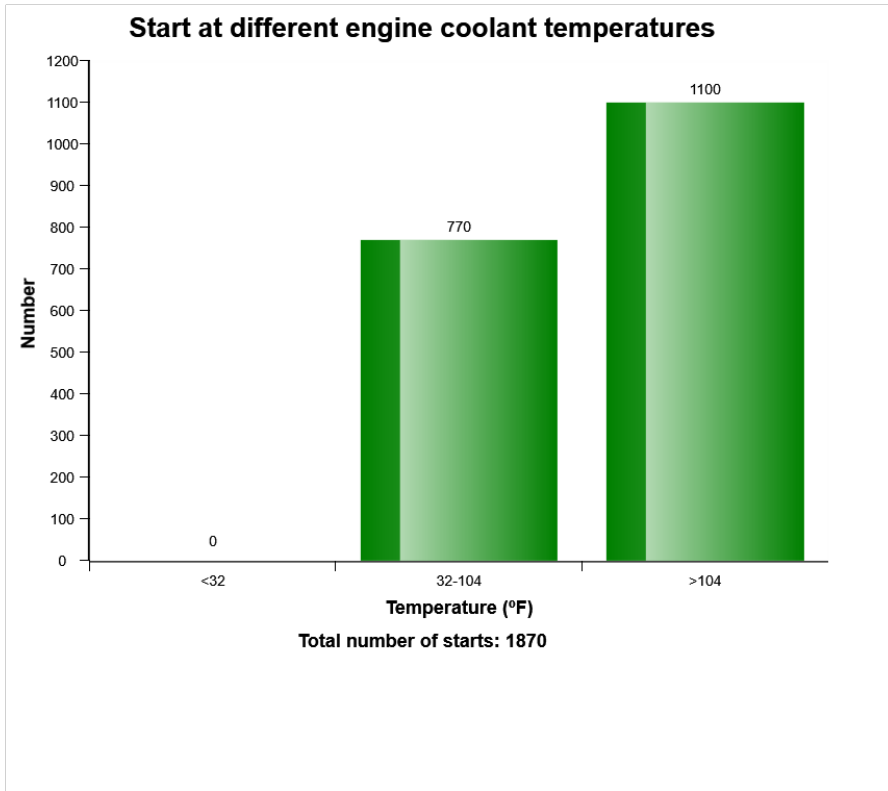
Machine model	SerialNo	Operating Hours	Reading Date
A40G	341067	4968.8	25/02/2019



Machine model	SerialNo	Operating Hours	Reading Date
A40G	341067	4968.8	25/02/2019



Machine model	SerialNo	Operating Hours	Reading Date
A40G	341067	4968.8	25/02/2019



Machine model	SerialNo	Operating Hours	Reading Date
A40G	341067	4968.8	25/02/2019

**High engine coolant temperature
Total number of occurrences = 3**

	Op hours	Year	Month	Day	Hour	Minute	Duration (sec)	Extreme (° F)
D	0	2000	0	0	0	0	0	32
E	0	2000	0	0	0	0	0	32
F	0	2000	0	0	0	0	0	32
G	0	2000	0	0	0	0	0	32
H	0	2000	0	0	0	0	0	32
I	0	2000	0	0	0	0	0	32
J	0	2000	0	0	0	0	0	32
A	1360	2016	12	12	9	45	400	235
B	1360	2016	12	12	9	55	303	242
C	1360	2016	12	12	10	27	152	246



Machine model	SerialNo	Operating Hours	Reading Date
A40G	341067	4968.8	25/02/2019

High engine oil temperature
Total number of occurrences = 0

	Op hours	Year	Month	Day	Hour	Minute	Duration (sec)	Extreme (° F)
A	0	2000	0	0	0	0	0	32
B	0	2000	0	0	0	0	0	32
C	0	2000	0	0	0	0	0	32
D	0	2000	0	0	0	0	0	32
E	0	2000	0	0	0	0	0	32
F	0	2000	0	0	0	0	0	32
G	0	2000	0	0	0	0	0	32
H	0	2000	0	0	0	0	0	32
I	0	2000	0	0	0	0	0	32
J	0	2000	0	0	0	0	0	32



Machine model	SerialNo	Operating Hours	Reading Date
A40G	341067	4968.8	25/02/2019

Starter overheating
Total number of occurrences = 0

Op hours	Year	Month	Day	Hour	Minute
0	2000	0	0	0	0
0	2000	0	0	0	0
0	2000	0	0	0	0
0	2000	0	0	0	0
0	2000	0	0	0	0
0	2000	0	0	0	0
0	2000	0	0	0	0
0	2000	0	0	0	0
0	2000	0	0	0	0
0	2000	0	0	0	0
0	2000	0	0	0	0
0	2000	0	0	0	0
0	2000	0	0	0	0
0	2000	0	0	0	0
0	2000	0	0	0	0
0	2000	0	0	0	0
0	2000	0	0	0	0
0	2000	0	0	0	0
0	2000	0	0	0	0
0	2000	0	0	0	0
0	2000	0	0	0	0
0	2000	0	0	0	0



Machine model	SerialNo	Operating Hours	Reading Date
A40G	341067	4968.8	25/02/2019

Low Air filter pressure
Total number of occurrences = 0

Op hours	Year	Month	Day	Hour	Minute	Duration (sec)
0	2000	0	0	0	0	0
0	2000	0	0	0	0	0
0	2000	0	0	0	0	0
0	2000	0	0	0	0	0
0	2000	0	0	0	0	0
0	2000	0	0	0	0	0
0	2000	0	0	0	0	0
0	2000	0	0	0	0	0
0	2000	0	0	0	0	0
0	2000	0	0	0	0	0
0	2000	0	0	0	0	0
0	2000	0	0	0	0	0
0	2000	0	0	0	0	0
0	2000	0	0	0	0	0
0	2000	0	0	0	0	0
0	2000	0	0	0	0	0
0	2000	0	0	0	0	0
0	2000	0	0	0	0	0
0	2000	0	0	0	0	0
0	2000	0	0	0	0	0



Machine model	SerialNo	Operating Hours	Reading Date
A40G	341067	4968.8	25/02/2019

Regeneration ignored
Total number of ignored regenerations 0

Op hours	Year	Month	Day	Hour	Minute	Duration (min)
* 0	2000	0	0	0	0	0
* 0	2000	0	0	0	0	0
* 0	2000	0	0	0	0	0
* 0	2000	0	0	0	0	0
* 0	2000	0	0	0	0	0
* 0	2000	0	0	0	0	0
* 0	2000	0	0	0	0	0
* 0	2000	0	0	0	0	0
* 0	2000	0	0	0	0	0
* 0	2000	0	0	0	0	0
* 0	2000	0	0	0	0	0
* 0	2000	0	0	0	0	0
* 0	2000	0	0	0	0	0
* 0	2000	0	0	0	0	0
* 0	2000	0	0	0	0	0
* 0	2000	0	0	0	0	0
* 0	2000	0	0	0	0	0
* 0	2000	0	0	0	0	0
* 0	2000	0	0	0	0	0
* 0	2000	0	0	0	0	0
* 0	2000	0	0	0	0	0
* 0	2000	0	0	0	0	0
* 0	2000	0	0	0	0	0



Machine model	SerialNo	Operating Hours	Reading Date
A40G	341067	4968.8	25/02/2019

Regeneration aborted
Total number of occurrences = 30

Op hours	Year	Month	Day	Hour	Minute	Reason
4805	2019	1	21	12	53	1
4806	2019	1	21	14	2	1
4808	2019	1	21	15	22	1
4814	2019	1	22	11	19	1
4815	2019	1	22	12	53	1
4817	2019	1	22	14	54	1
4818	2019	1	22	16	19	1
4821	2019	1	23	9	17	1
4827	2019	1	23	15	9	1
4828	2019	1	23	15	47	1
4828	2019	1	23	15	42	1
4828	2019	1	23	16	7	1
4828	2019	1	23	15	56	1
4836	2019	1	24	14	0	1
4837	2019	1	24	15	23	1
4837	2019	1	24	15	6	1
4862	2019	1	31	11	16	1
4871	2019	2	1	9	26	1
4872	2019	2	1	11	3	1
4879	2019	2	4	9	50	1



Machine model	SerialNo	Operating Hours	Reading Date
A40G	341067	4968.8	25/02/2019

Regeneration duration
Total number of occurrences = 86

Op hours	Year	Month	Day	Hour	Minute	Duration (min)
4821	2019	1	23	8	48	29
4827	2019	1	23	15	3	6
4828	2019	1	23	15	43	4
4828	2019	1	23	15	36	6
4828	2019	1	23	15	47	9
4828	2019	1	23	16	5	3
4828	2019	1	23	16	8	45
4829	2019	1	24	6	53	33
4836	2019	1	24	13	53	7
4837	2019	1	24	15	24	45
4837	2019	1	24	15	6	17
4837	2019	1	24	15	4	2
4848	2019	1	28	7	34	48
4862	2019	1	31	11	6	10
4864	2019	1	31	13	39	45
4871	2019	2	1	9	15	11
4872	2019	2	1	10	45	18
4878	2019	2	4	9	18	31
4883	2019	2	4	14	19	47
4902	2019	2	6	13	40	46



Machine model	SerialNo	Operating Hours	Reading Date
A40G	341067	4968.8	25/02/2019

Water level warning in water separator
Total number of occurrences = 2

Op hours	Year	Month	Day	Hour	Minute	Duration (min)
0	2000	0	0	0	0	0
0	2000	0	0	0	0	0
0	2000	0	0	0	0	0
0	2000	0	0	0	0	0
0	2000	0	0	0	0	0
0	2000	0	0	0	0	0
0	2000	0	0	0	0	0
0	2000	0	0	0	0	0
0	2000	0	0	0	0	0
0	2000	0	0	0	0	0
0	2000	0	0	0	0	0
0	2000	0	0	0	0	0
0	2000	0	0	0	0	0
0	2000	0	0	0	0	0
0	2000	0	0	0	0	0
0	2000	0	0	0	0	0
0	2000	0	0	0	0	0
0	2000	0	0	0	0	0
0	2000	0	0	0	0	0
0	2000	0	0	0	0	0
0	2000	0	0	0	0	0
0	2000	0	0	0	0	0
0	2000	0	0	0	0	0
0	2000	0	0	0	0	0
0	2000	0	0	0	0	0
0	2000	0	0	0	0	0
0	2000	0	0	0	0	0
0	2000	0	0	0	0	0
1756	2017	2	9	14	10	0
2067	2017	3	30	11	49	0



Machine model	SerialNo	Operating Hours	Reading Date
A40G	341067	4968.8	25/02/2019

**High voltage
Total number of occurrences = 0**

Op hours	Year	Month	Day	Hour	Minute	Duration (sec)	Extreme value
0	2000	0	0	0	0	0	0.0
0	2000	0	0	0	0	0	0.0
0	2000	0	0	0	0	0	0.0
0	2000	0	0	0	0	0	0.0
0	2000	0	0	0	0	0	0.0
0	2000	0	0	0	0	0	0.0
0	2000	0	0	0	0	0	0.0
0	2000	0	0	0	0	0	0.0
0	2000	0	0	0	0	0	0.0
0	2000	0	0	0	0	0	0.0
0	2000	0	0	0	0	0	0.0
0	2000	0	0	0	0	0	0.0
0	2000	0	0	0	0	0	0.0
0	2000	0	0	0	0	0	0.0
0	2000	0	0	0	0	0	0.0
0	2000	0	0	0	0	0	0.0
0	2000	0	0	0	0	0	0.0
0	2000	0	0	0	0	0	0.0
0	2000	0	0	0	0	0	0.0
0	2000	0	0	0	0	0	0.0
0	2000	0	0	0	0	0	0.0
0	2000	0	0	0	0	0	0.0
0	2000	0	0	0	0	0	0.0



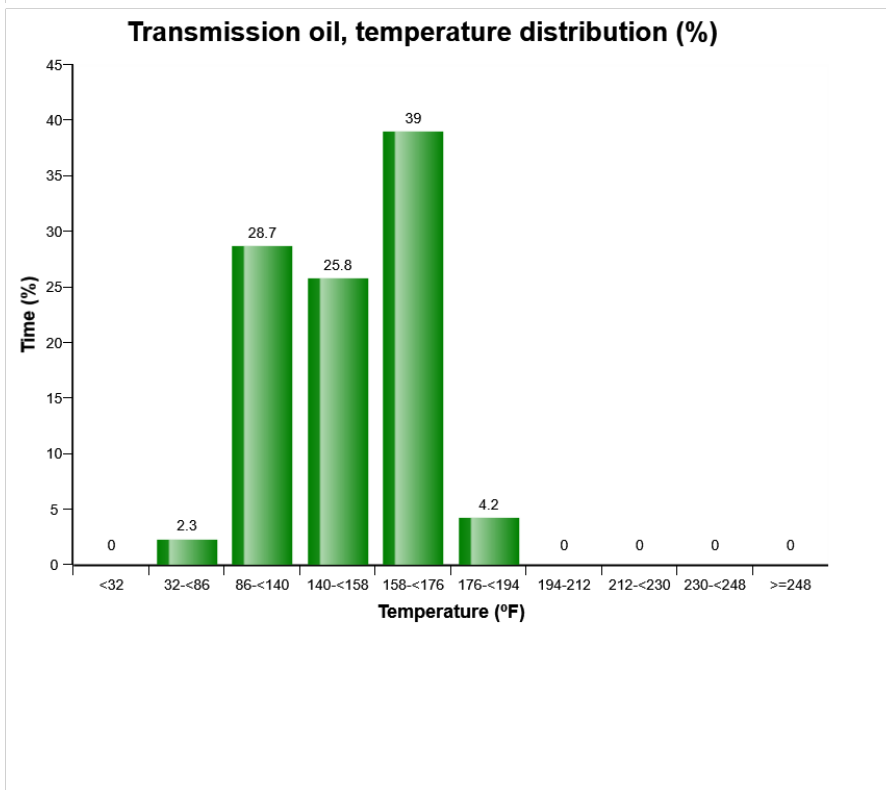
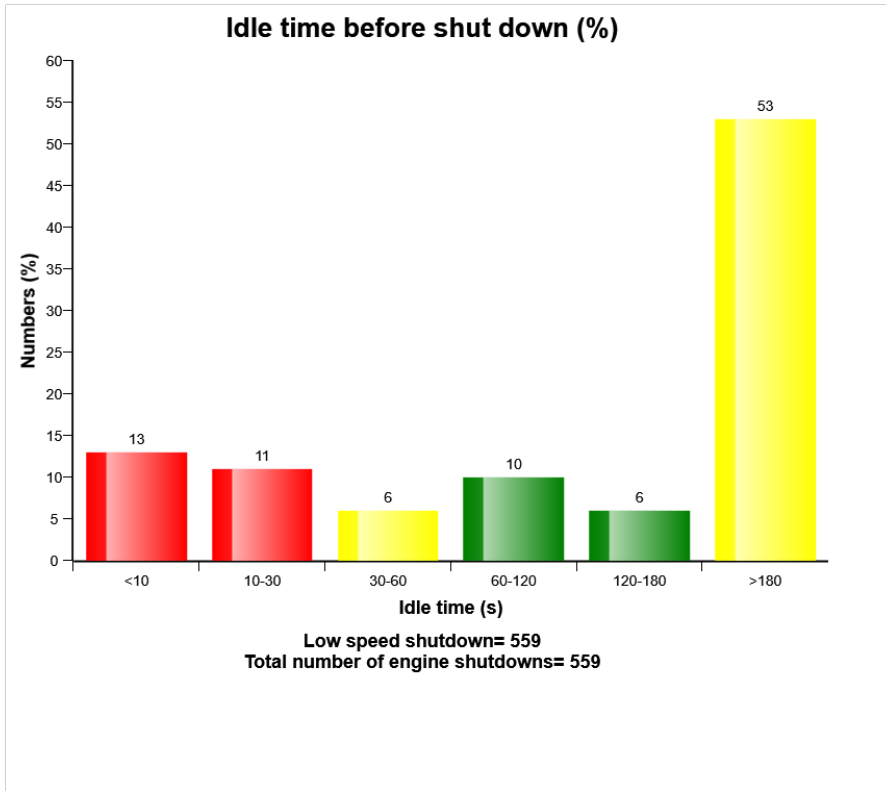
Machine model	SerialNo	Operating Hours	Reading Date
A40G	341067	4968.8	25/02/2019

**Low voltage
Total number of occurrences = 0**

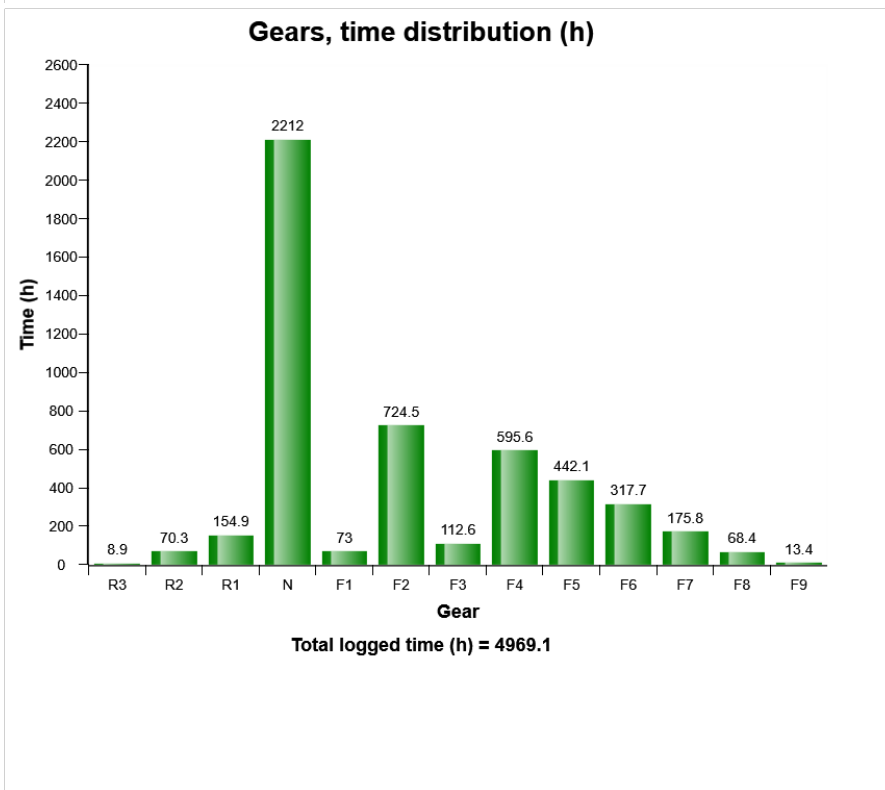
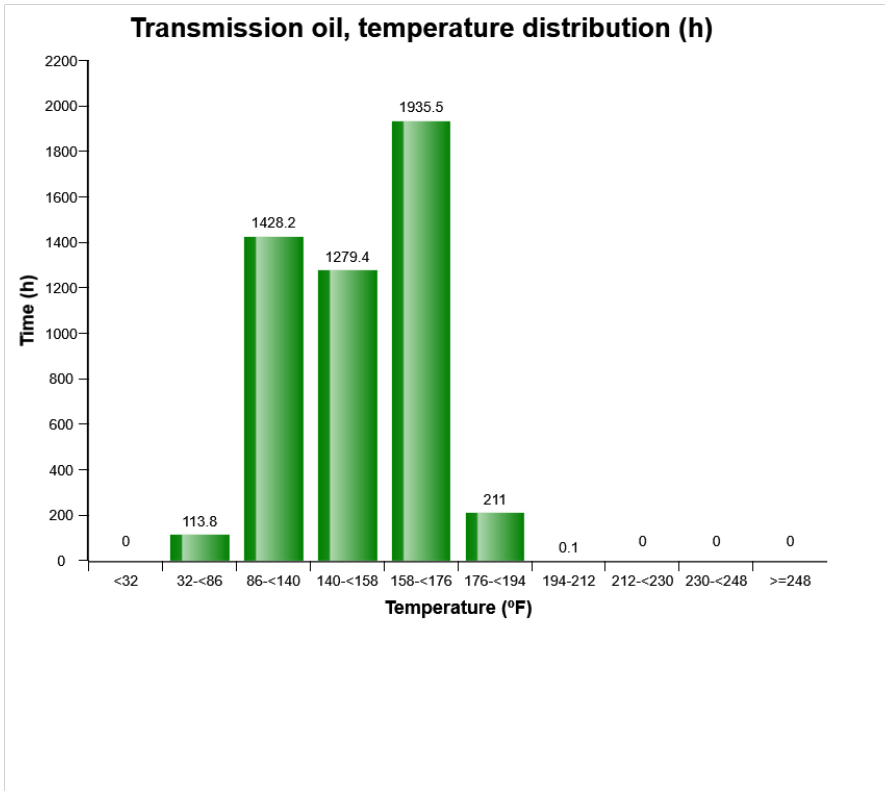
Op hours	Year	Month	Day	Hour	Minute	Duration (sec)	Extreme value
0	2000	0	0	0	0	0	0.0
0	2000	0	0	0	0	0	0.0
0	2000	0	0	0	0	0	0.0
0	2000	0	0	0	0	0	0.0
0	2000	0	0	0	0	0	0.0
0	2000	0	0	0	0	0	0.0
0	2000	0	0	0	0	0	0.0
0	2000	0	0	0	0	0	0.0
0	2000	0	0	0	0	0	0.0
0	2000	0	0	0	0	0	0.0
0	2000	0	0	0	0	0	0.0
0	2000	0	0	0	0	0	0.0
0	2000	0	0	0	0	0	0.0
0	2000	0	0	0	0	0	0.0
0	2000	0	0	0	0	0	0.0
0	2000	0	0	0	0	0	0.0
0	2000	0	0	0	0	0	0.0
0	2000	0	0	0	0	0	0.0
0	2000	0	0	0	0	0	0.0
0	2000	0	0	0	0	0	0.0
0	2000	0	0	0	0	0	0.0
0	2000	0	0	0	0	0	0.0
0	2000	0	0	0	0	0	0.0
0	2000	0	0	0	0	0	0.0
0	2000	0	0	0	0	0	0.0



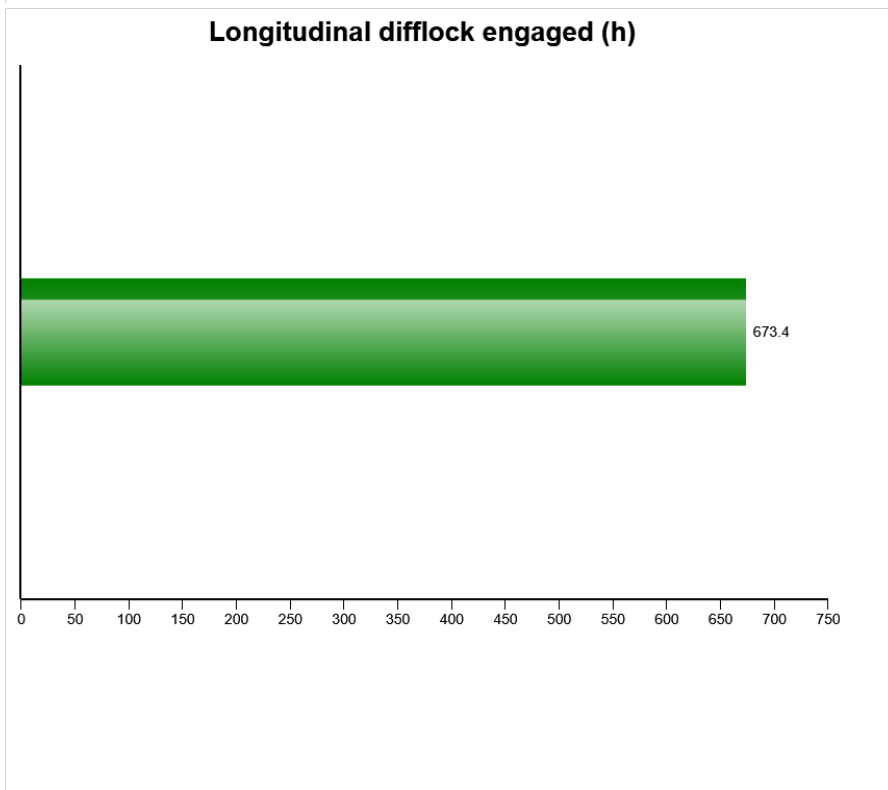
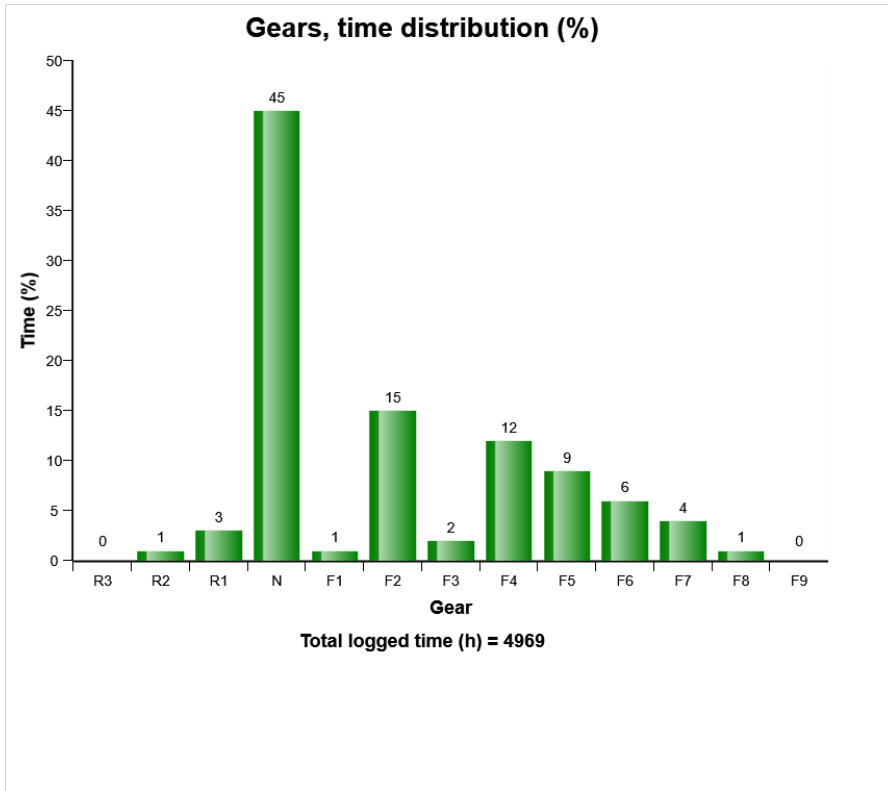
Machine model	SerialNo	Operating Hours	Reading Date
A40G	341067	4968.8	25/02/2019



Machine model	SerialNo	Operating Hours	Reading Date
A40G	341067	4968.8	25/02/2019



Machine model	SerialNo	Operating Hours	Reading Date
A40G	341067	4968.8	25/02/2019



Machine model	SerialNo	Operating Hours	Reading Date
A40G	341067	4968.8	25/02/2019

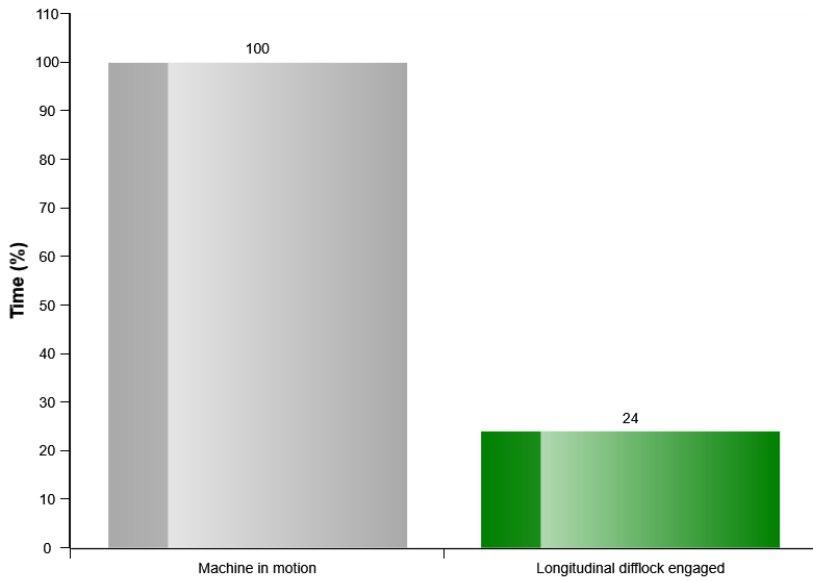
**Transmission oil pressure low
Total number of occurrences = 8**

Op hours	Year	Month	Day	Hour	Minute	Duration (sec)	Extreme (psi)
0	2000	0	0	0	0	0	0
0	2000	0	0	0	0	0	0
0	2000	0	0	0	0	0	0
0	2000	0	0	0	0	0	0
0	2000	0	0	0	0	0	0
0	2000	0	0	0	0	0	0
0	2000	0	0	0	0	0	0
0	2000	0	0	0	0	0	0
0	2000	0	0	0	0	0	0
0	2000	0	0	0	0	0	0
0	2000	0	0	0	0	0	0
0	2000	0	0	0	0	0	0
0	2000	0	0	0	0	0	0
0	2000	0	0	0	0	0	0
530	2016	4	18	11	51	0	1387
1200	2016	11	15	11	10	0	840
4045	2018	7	24	14	46	1	139
4077	2018	8	3	13	38	1	157
4286	2018	10	10	16	20	0	0
4288	2018	10	11	8	45	0	0
4289	2018	10	11	9	8	0	0
4928	2019	2	5	15	34	1	328

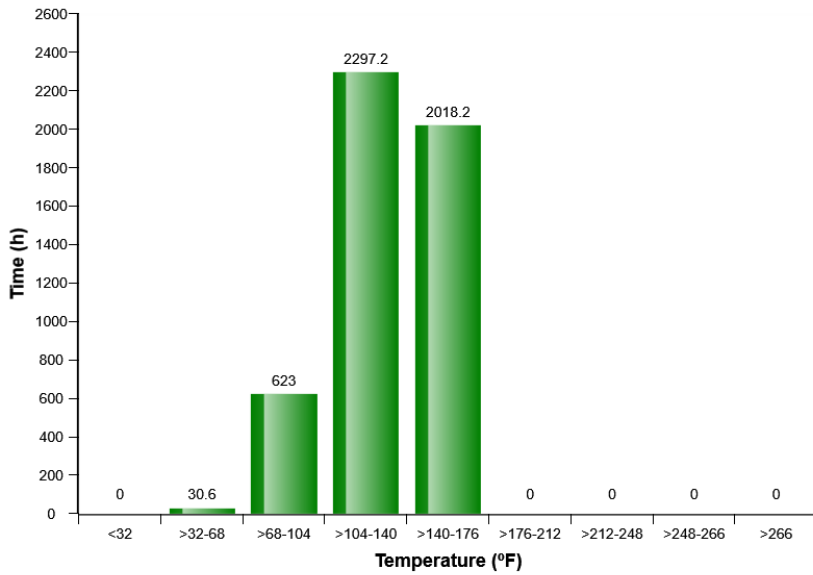


Machine model	SerialNo	Operating Hours	Reading Date
A40G	341067	4968.8	25/02/2019

Longitudinal difflock use related to machine in motion (%)

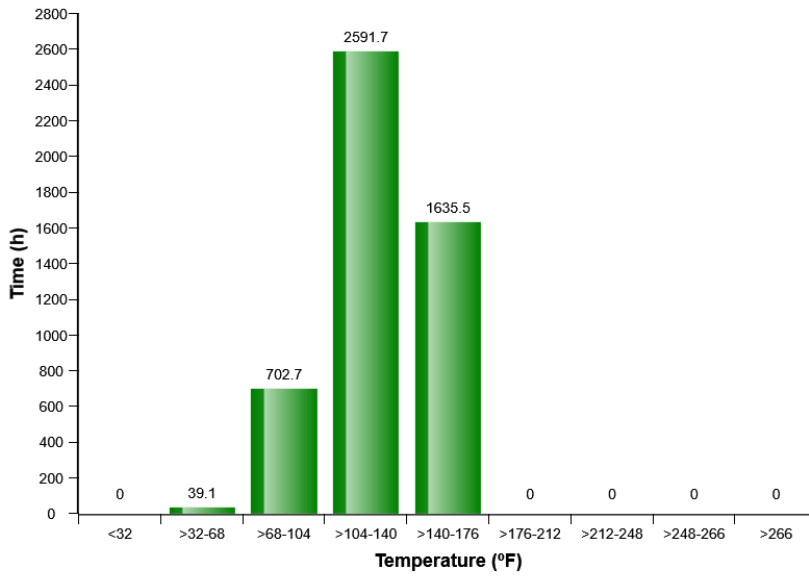


Service brake cooling oil, front axle temperature

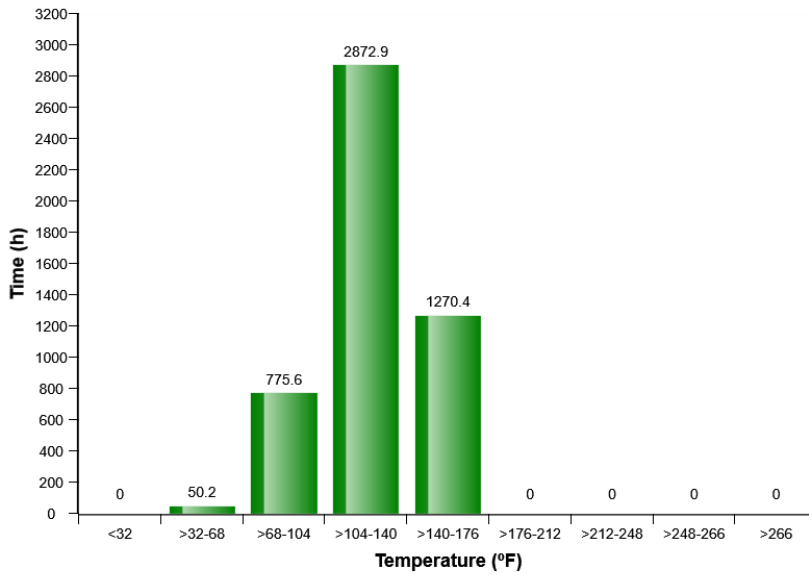


Machine model	SerialNo	Operating Hours	Reading Date
A40G	341067	4968.8	25/02/2019

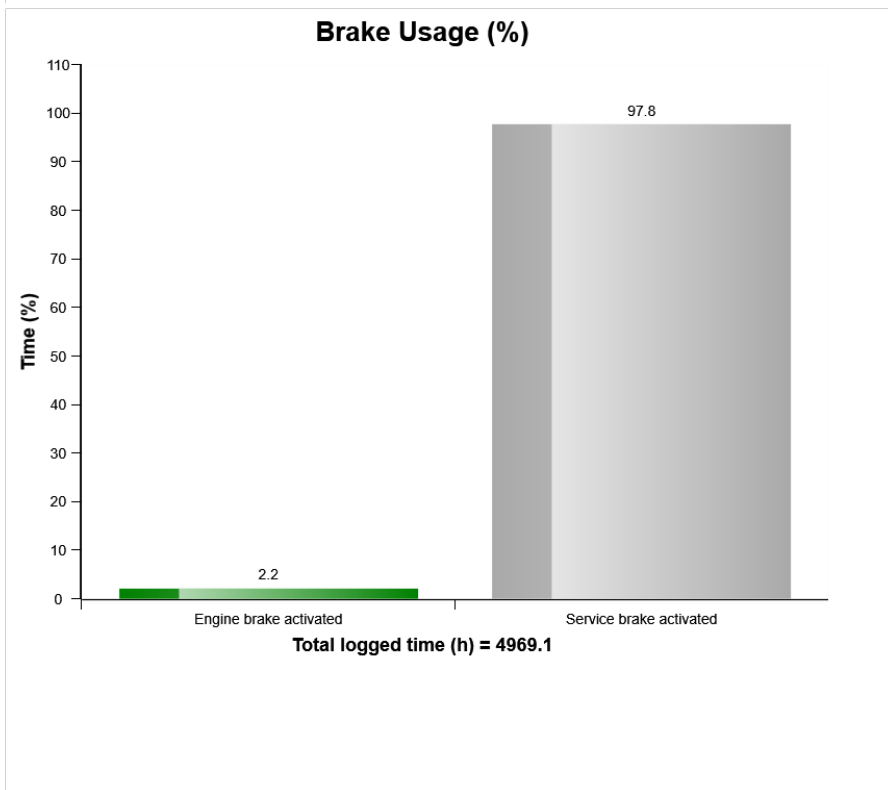
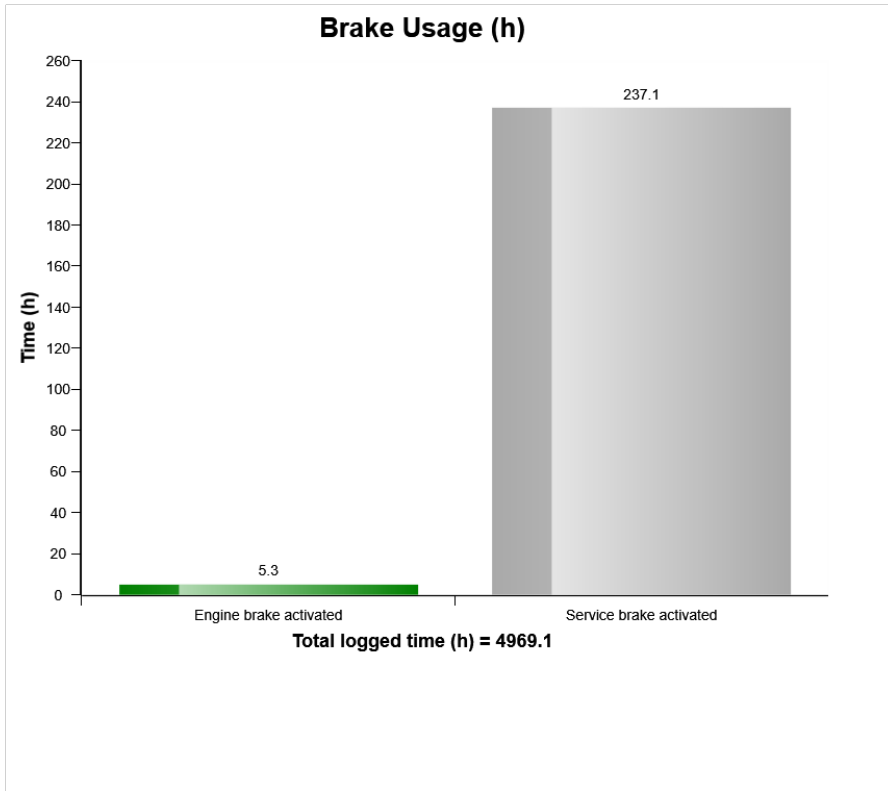
Service brake cooling oil, first bogie axle temperature



Service brake cooling oil, second bogie axle temperature



Machine model	SerialNo	Operating Hours	Reading Date
A40G	341067	4968.8	25/02/2019



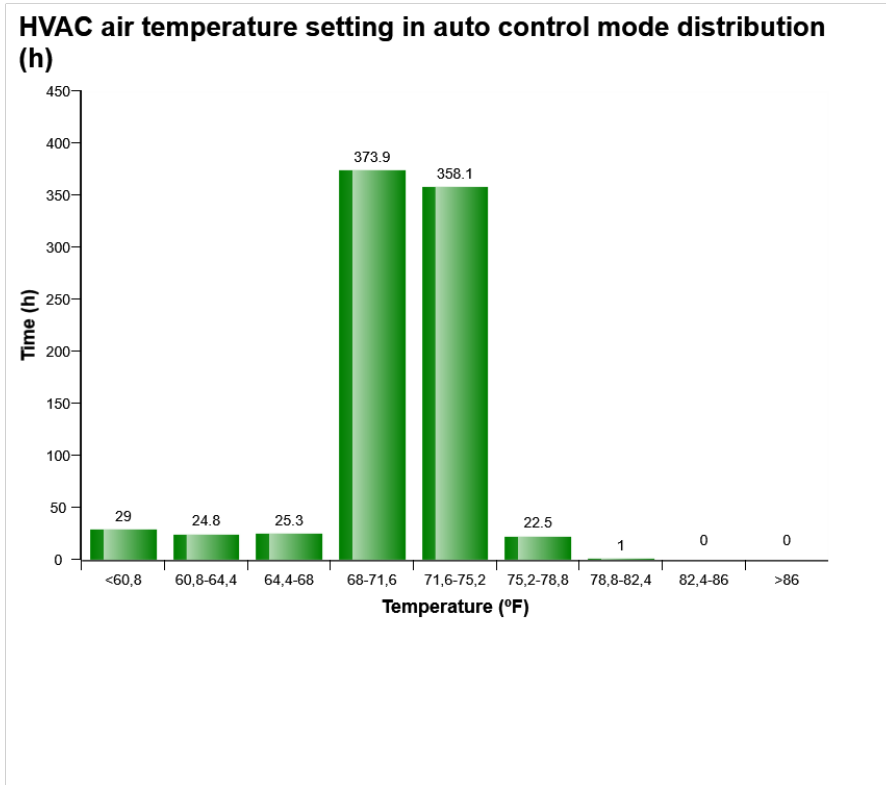
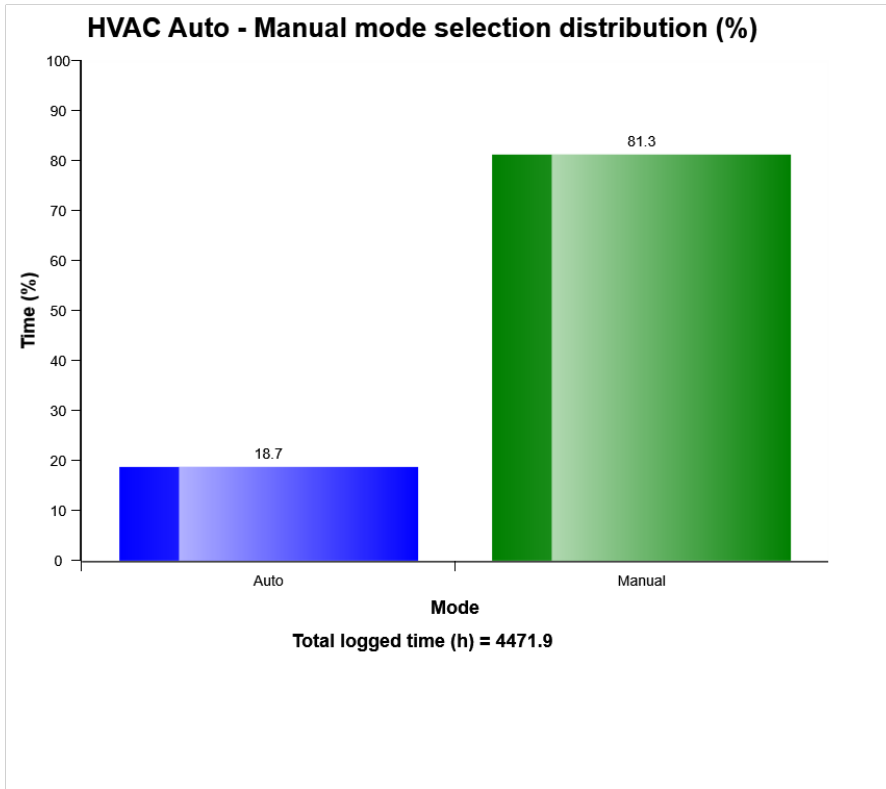
Machine model	SerialNo	Operating Hours	Reading Date
A40G	341067	4968.8	25/02/2019

Low Brake Servo Pressure
Total number of occurrences = 13

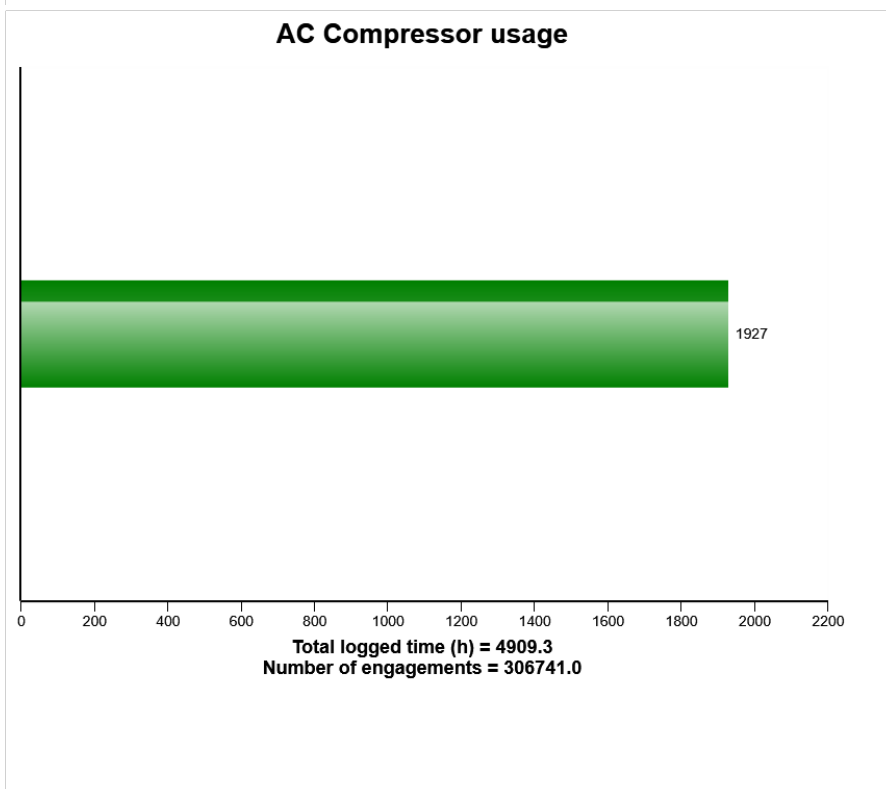
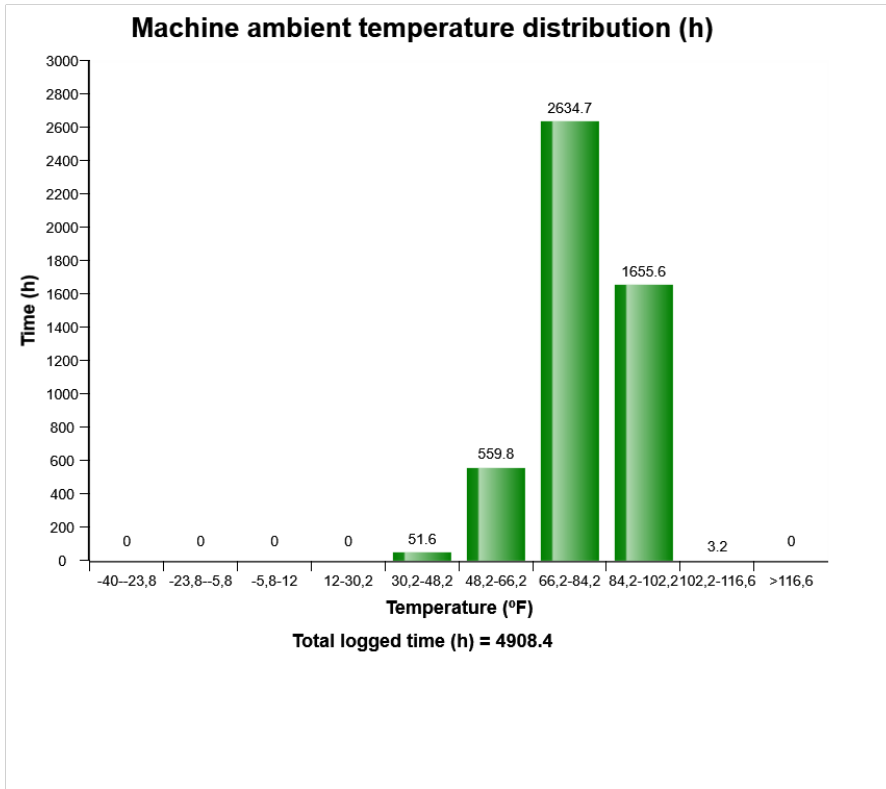
	Op hours	Year	Month	Day	Hour	Minute	Duration (sec)	Extreme (psi)
D	909	2016	7	3	14	10	0	2231
E	921	2016	7	6	9	9	0	2213
F	924	2016	7	7	13	33	0	2163
G	1056	2016	8	16	8	23	0	2138
H	1087	2016	8	25	13	3	0	2225
I	1087	2016	8	29	8	31	0	2095
J	2047	2017	3	25	1	15	0	2461
A	3546	2018	4	21	10	49	3	1742
B	4053	2018	7	28	7	27	2	1934
C	4103	2018	8	11	9	25	3	1636



Machine model	SerialNo	Operating Hours	Reading Date
A40G	341067	4968.8	25/02/2019

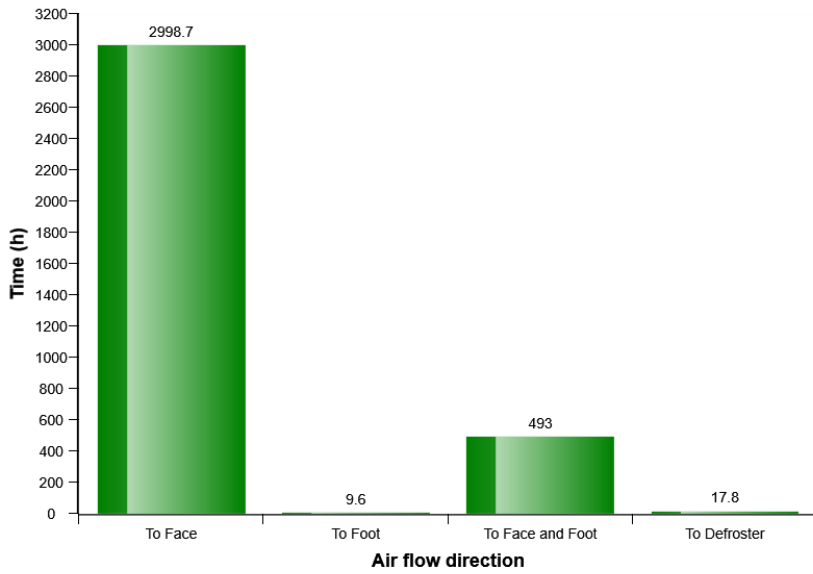


Machine model	SerialNo	Operating Hours	Reading Date
A40G	341067	4968.8	25/02/2019

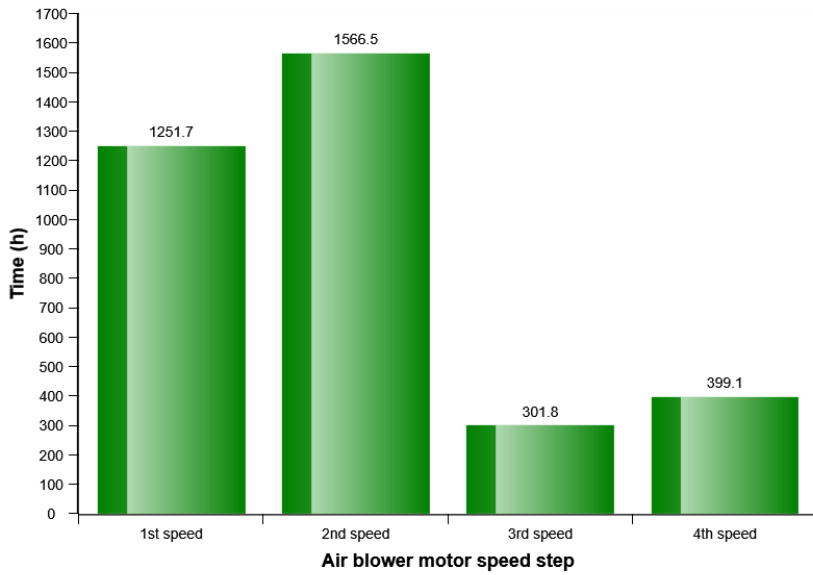


Machine model	SerialNo	Operating Hours	Reading Date
A40G	341067	4968.8	25/02/2019

HVAC air flow direction in manual mode distribution (h)



HVAC air blower motor speed in manual mode distribution (h)



Machine model	SerialNo	Operating Hours	Reading Date
A40G	341067	4968.8	25/02/2019

AC High Pressure
Total number of occurrences = 18

Op hours	Year	Month	Day	Hours	Minute	Duration (sec)	Extreme (° F)
0	2000	0	0	0	0	0	32
0	2000	0	0	0	0	0	32
2379	2017	5	16	12	44	13	99
2380	2017	5	16	14	8	11	100
2381	2017	5	16	14	53	22	104
2381	2017	5	16	14	58	68	104
2381	2017	5	16	15	4	31	102
2381	2017	5	16	15	10	15	102
2381	2017	5	16	15	15	72	102
2381	2017	5	16	15	20	124	100
2381	2017	5	16	14	38	8	100
2382	2017	5	16	16	1	15	99
2382	2017	5	16	15	39	135	99
2382	2017	5	16	15	32	84	99
2382	2017	5	16	15	54	68	100
2382	2017	5	16	15	27	92	100
2383	2017	5	16	16	29	64	97
4059	2018	7	30	13	4	26	81
4083	2018	8	7	12	33	66	97
4335	2018	10	19	13	58	11	95



Machine model	SerialNo	Operating Hours	Reading Date
A40G	341067	4968.8	25/02/2019

**AC Boiling Protection
Number of engagements = 0**

Op hours	Year	Month	Day	Hour	Minute	Duration (sec)	Extreme (° F)
0	2000	0	0	0	0	0	32
0	2000	0	0	0	0	0	32
0	2000	0	0	0	0	0	32
0	2000	0	0	0	0	0	32
0	2000	0	0	0	0	0	32
0	2000	0	0	0	0	0	32
0	2000	0	0	0	0	0	32
0	2000	0	0	0	0	0	32
0	2000	0	0	0	0	0	32
0	2000	0	0	0	0	0	32
0	2000	0	0	0	0	0	32
0	2000	0	0	0	0	0	32
0	2000	0	0	0	0	0	32
0	2000	0	0	0	0	0	32
0	2000	0	0	0	0	0	32
0	2000	0	0	0	0	0	32
0	2000	0	0	0	0	0	32
0	2000	0	0	0	0	0	32
0	2000	0	0	0	0	0	32
0	2000	0	0	0	0	0	32
0	2000	0	0	0	0	0	32
0	2000	0	0	0	0	0	32
0	2000	0	0	0	0	0	32



Machine model	SerialNo	Operating Hours	Reading Date
A40G	341067	4968.8	25/02/2019

