

VOLVO CONSTRUCTION EQUIPMENT MATRIS REPORT

Machine model L350F	SerialNo 1909	Operating Hours 3657.4	Reading Date 04/06/2019
Company name Asset Appraisal Services	Dealer	Report Issuer	
Contact name	Technician shabeck	Primary Application Rehandling	
Site	Workorder	Ground Condition	

MATRIS Reading, Summary / Recommendation



Machine model	SerialNo	Operating Hours	Reading Date
L350F	1909	3657.4	04/06/2019

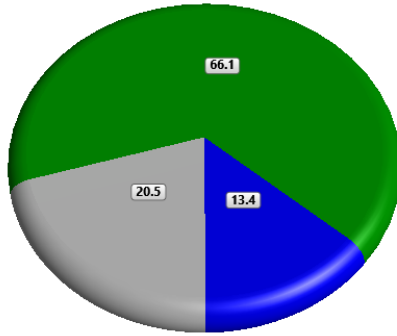
Main equipment	Type	Equipment
	Tyre size/class	Sold without tyres
	Main Attachment	Sold without attachment
	Extra Counterweight	None
	Ballast	None
	Chains	Not mounted
	Boom Suspension System	Not mounted
	Attachment Interface	Pin-on
	Volume m3 (yd3) / Area m2 (ft2)	
	Attachment make	



Machine model	SerialNo	Operating Hours	Reading Date
L350F	1909	3657.4	04/06/2019

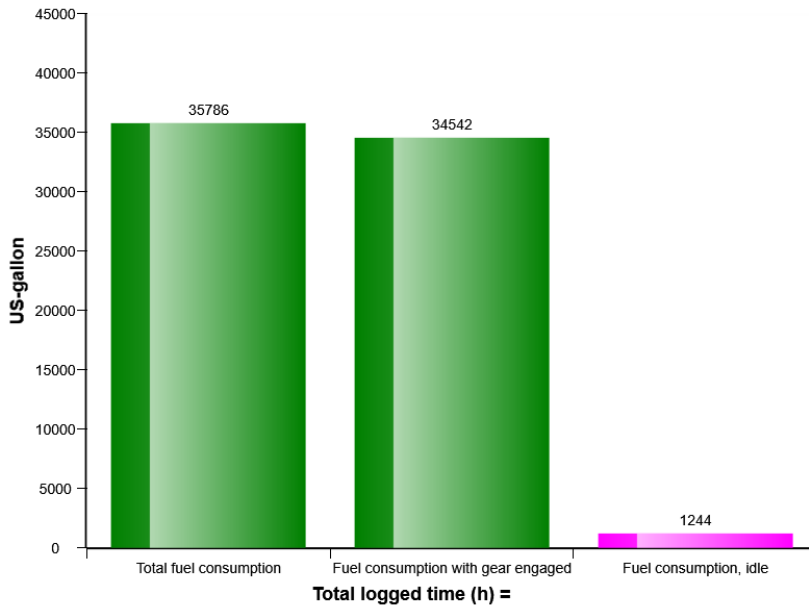
Machine utilization (%)

Machine in motion Machine in working mode Idling



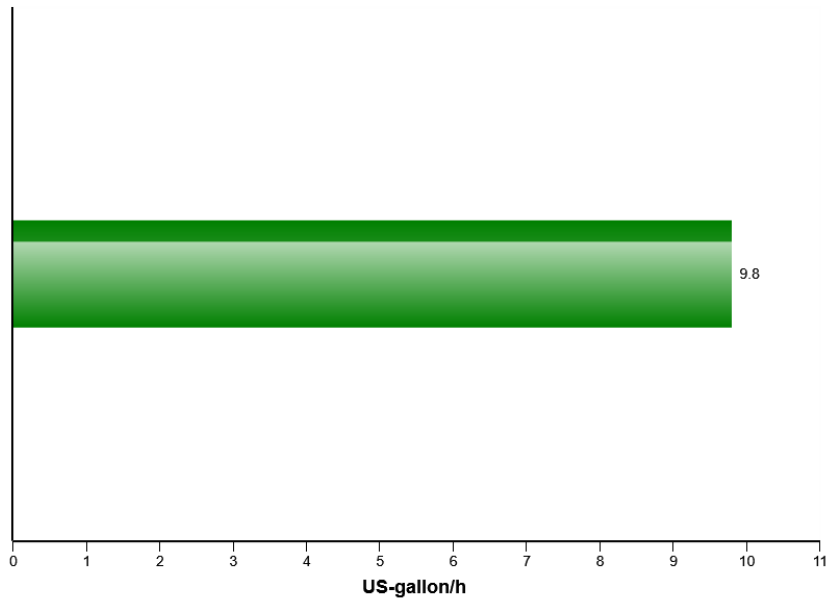
Total time (h) = 3651.3

Fuel consumption

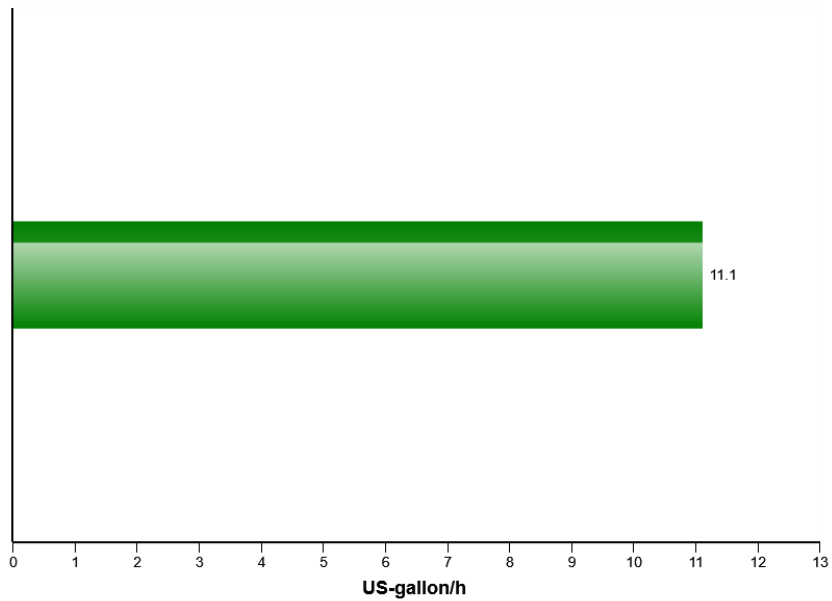


Machine model	SerialNo	Operating Hours	Reading Date
L350F	1909	3657.4	04/06/2019

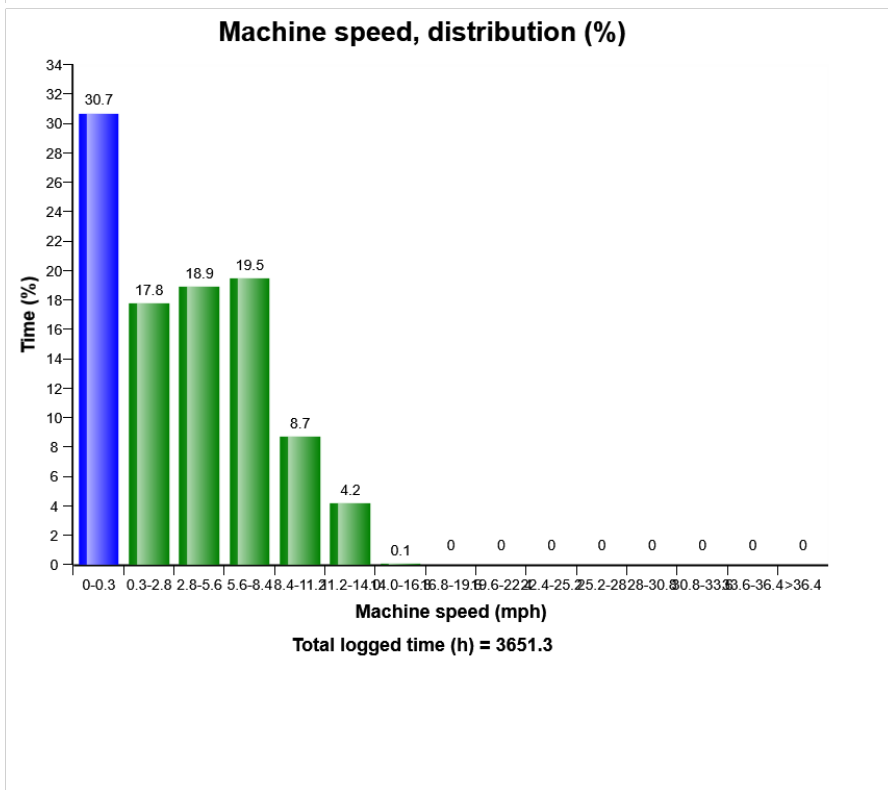
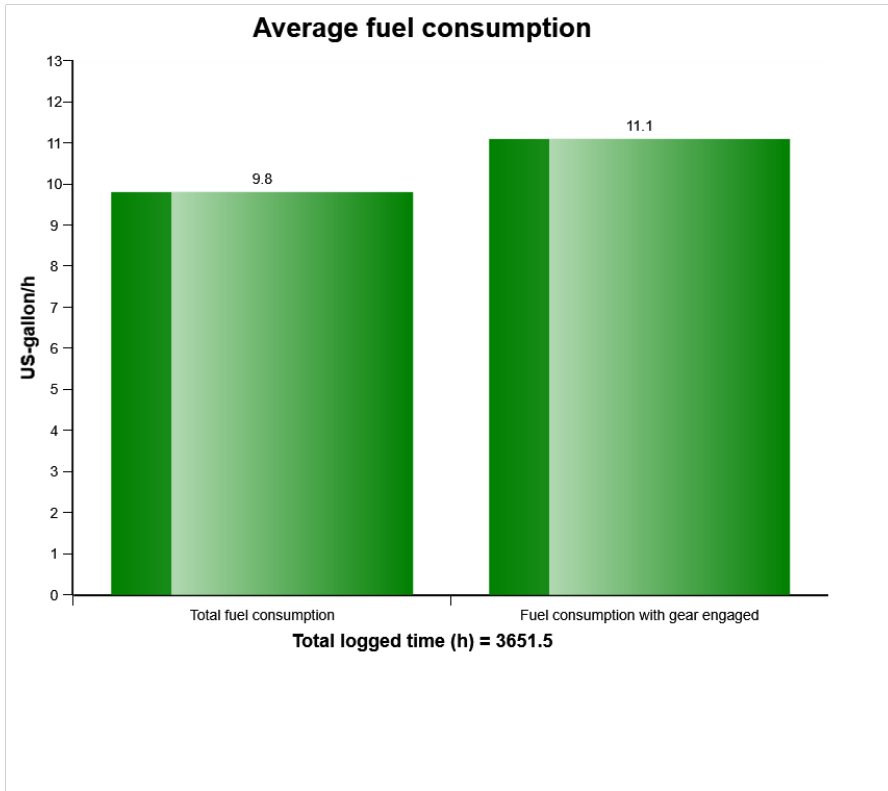
Average fuel consumption per hour



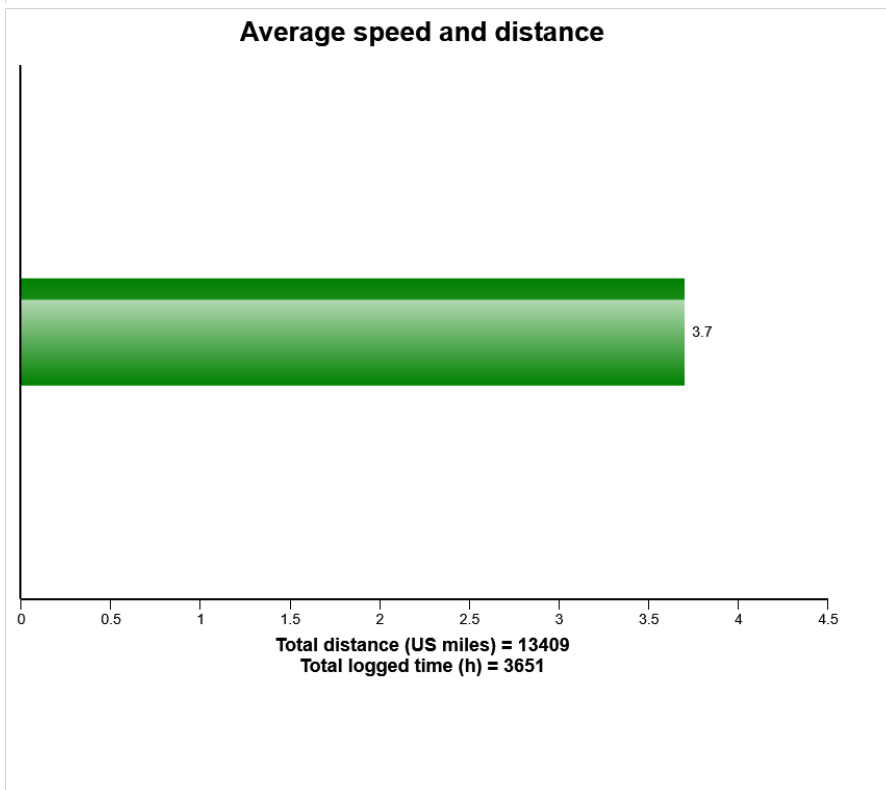
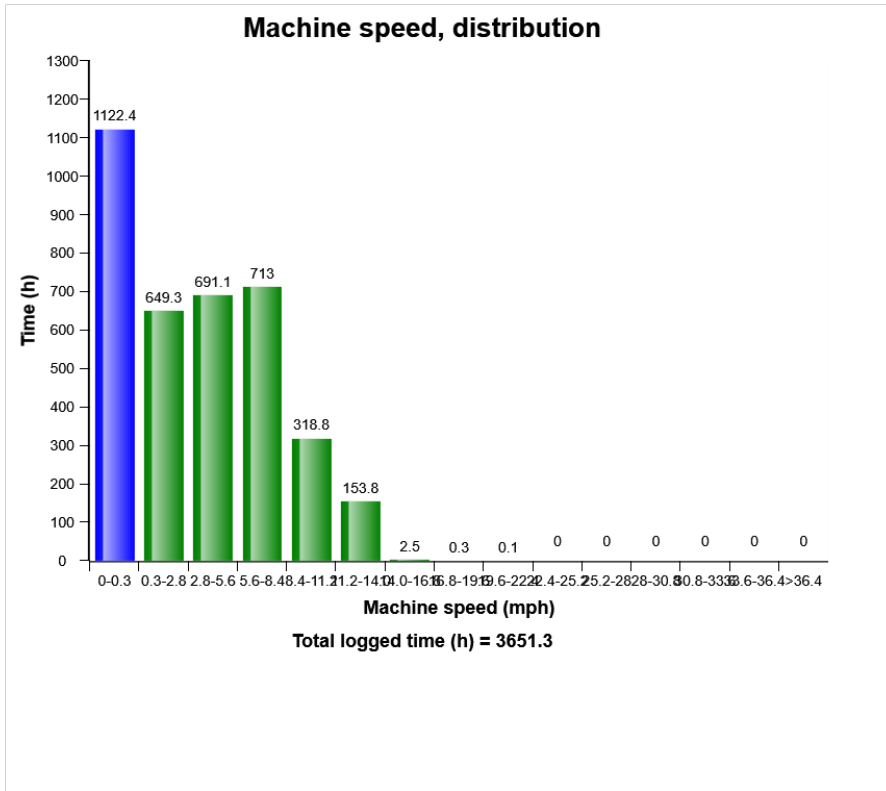
Average fuel consumption per hour with gear engaged



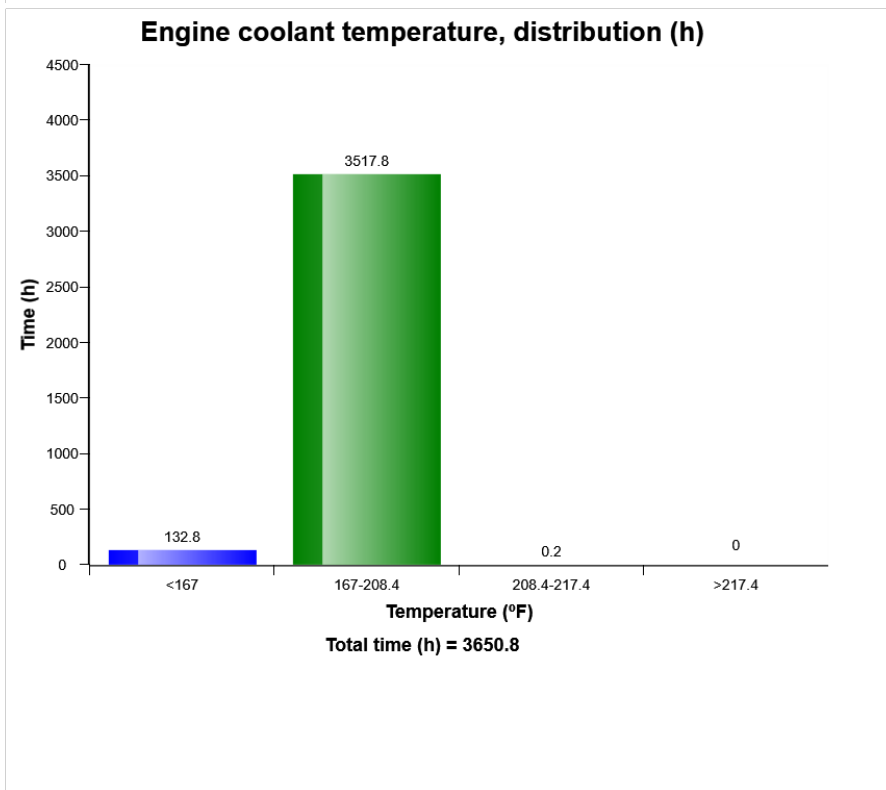
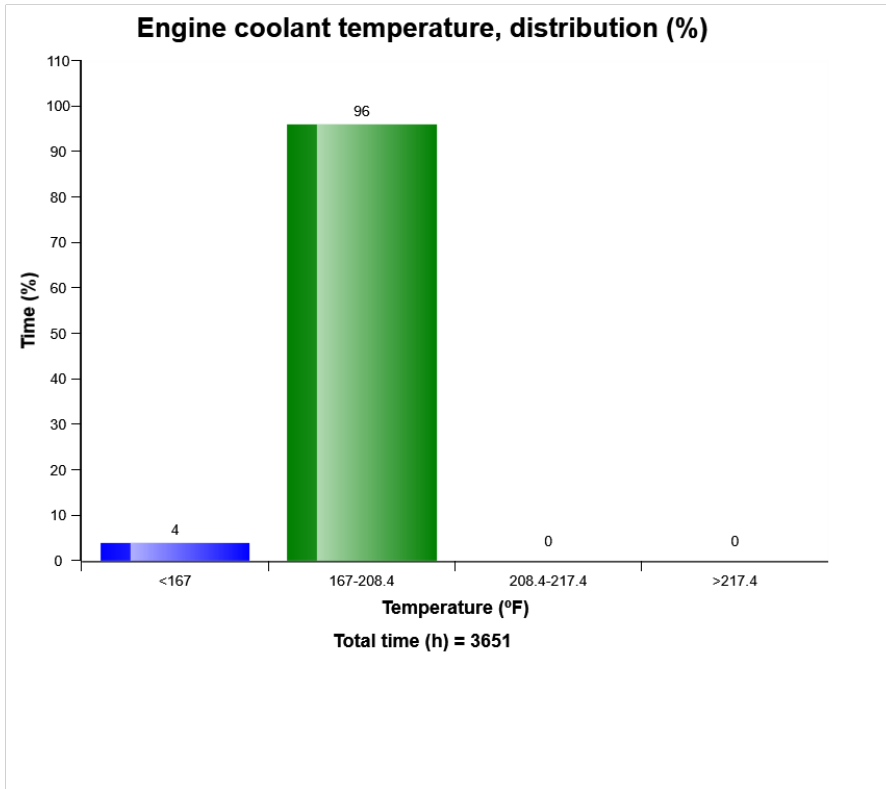
Machine model	SerialNo	Operating Hours	Reading Date
L350F	1909	3657.4	04/06/2019



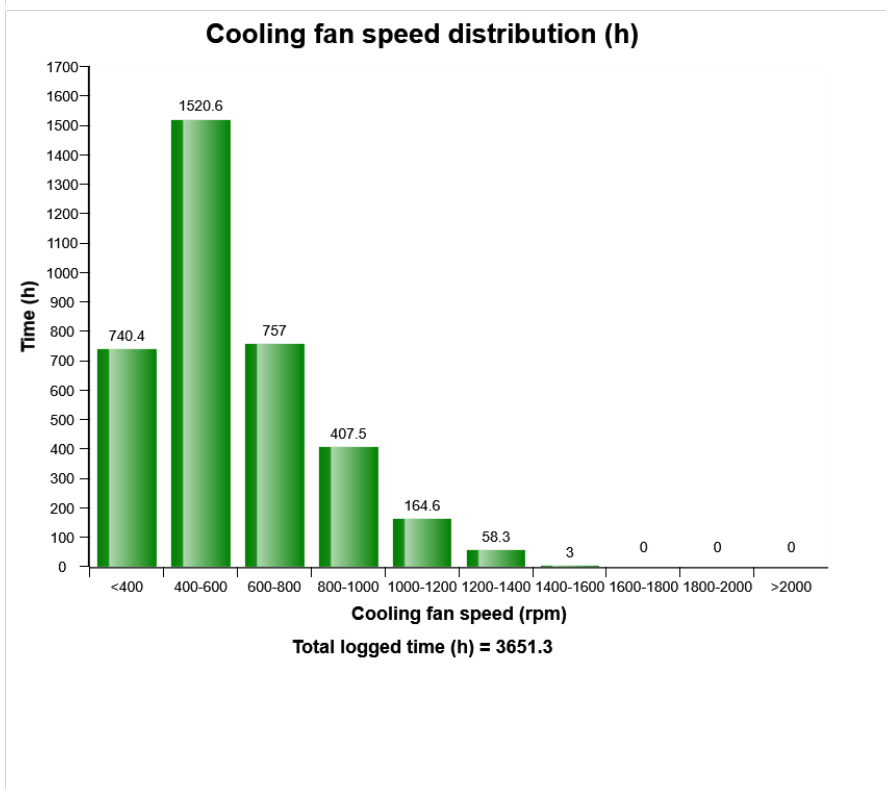
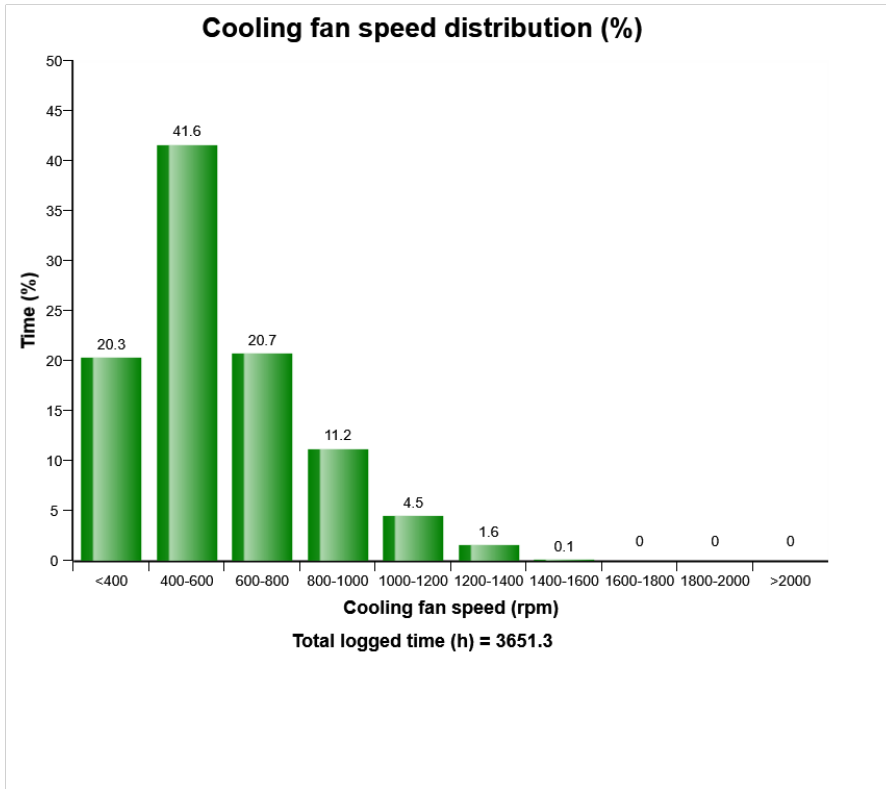
Machine model	SerialNo	Operating Hours	Reading Date
L350F	1909	3657.4	04/06/2019



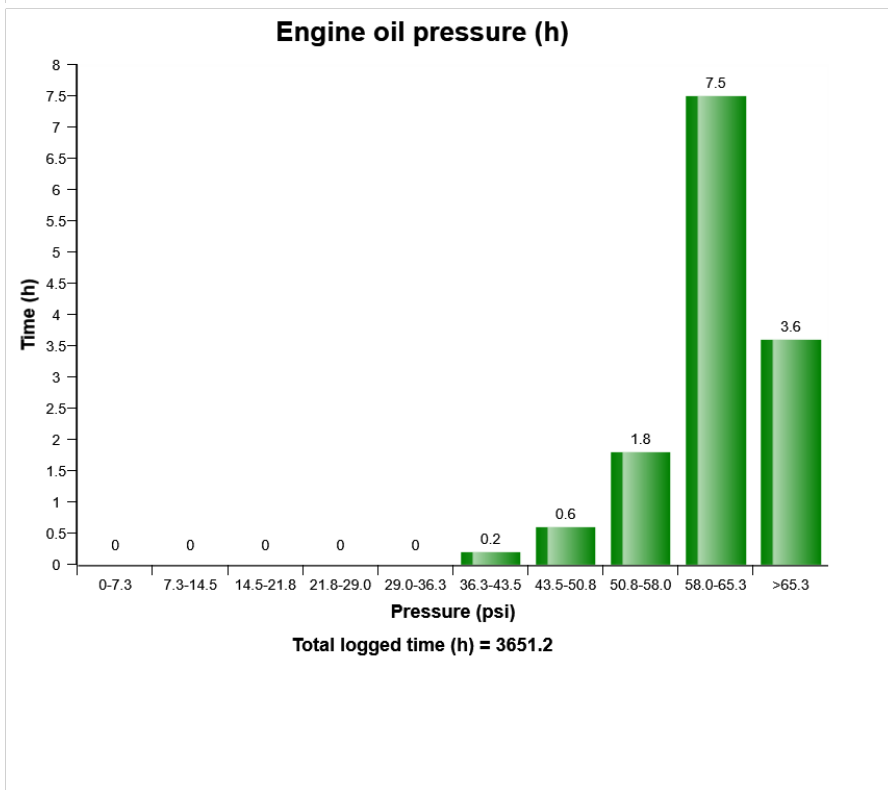
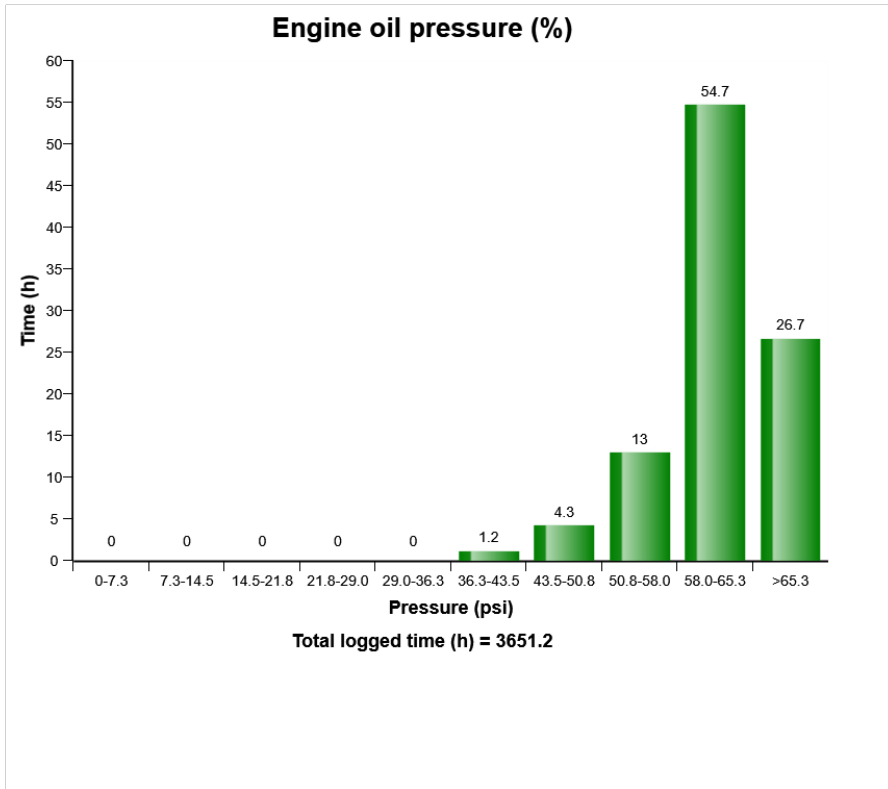
Machine model	SerialNo	Operating Hours	Reading Date
L350F	1909	3657.4	04/06/2019



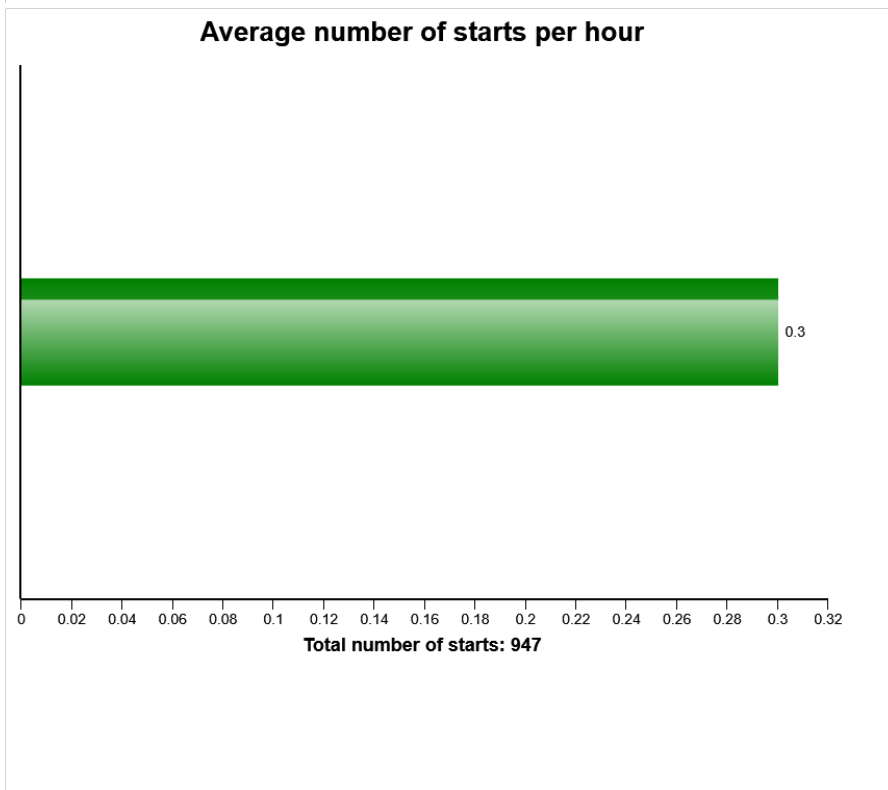
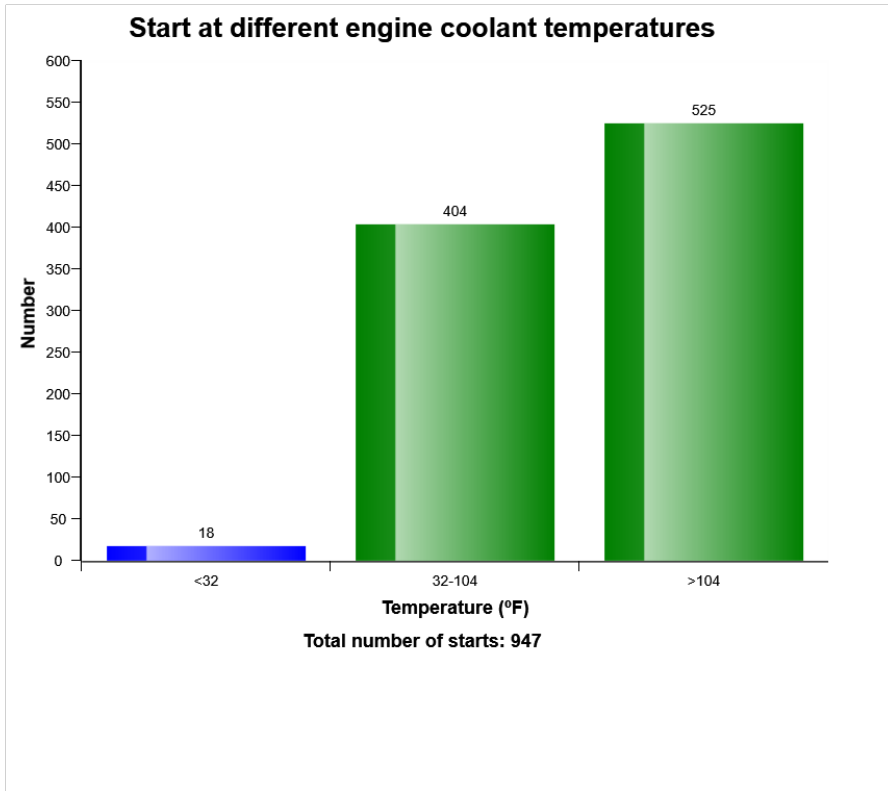
Machine model	SerialNo	Operating Hours	Reading Date
L350F	1909	3657.4	04/06/2019



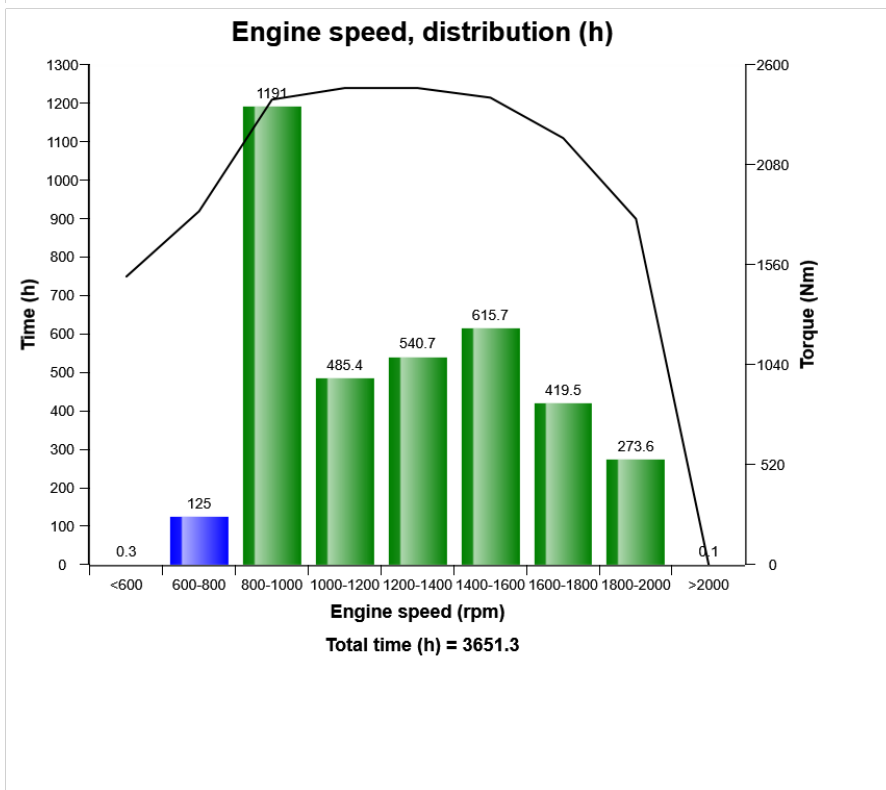
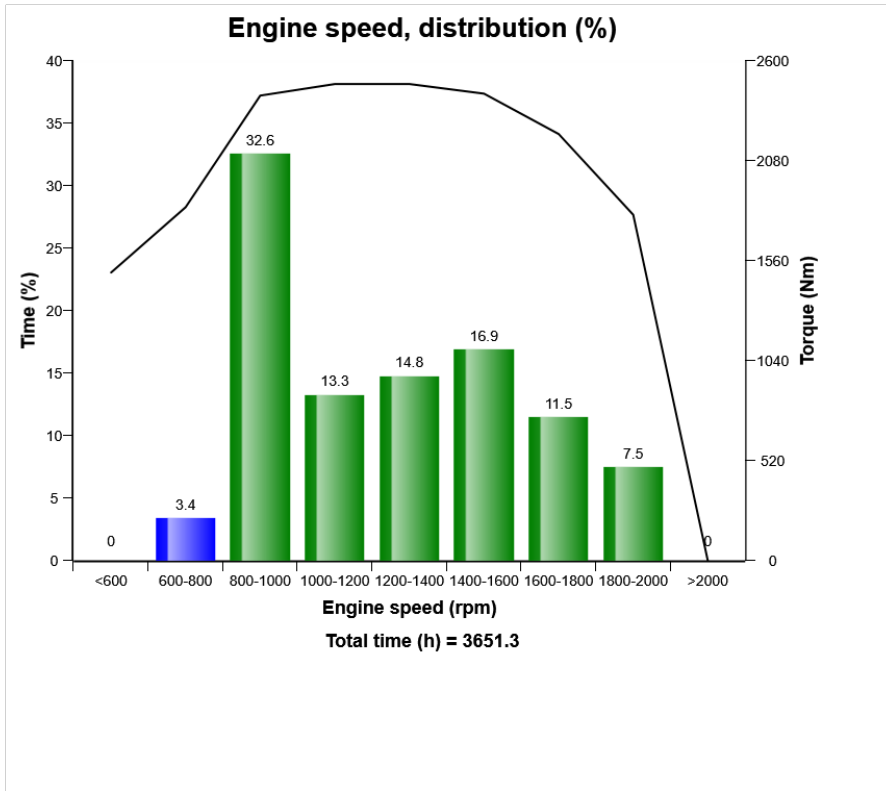
Machine model	SerialNo	Operating Hours	Reading Date
L350F	1909	3657.4	04/06/2019



Machine model	SerialNo	Operating Hours	Reading Date
L350F	1909	3657.4	04/06/2019



Machine model	SerialNo	Operating Hours	Reading Date
L350F	1909	3657.4	04/06/2019



Machine model L350F	SerialNo 1909	Operating Hours 3657.4	Reading Date 04/06/2019
------------------------	------------------	---------------------------	----------------------------

Low Engine Oil Pressure
Total number of occurrences = 1

Op hours	Year	Month	Day	Hour	Minute	Duration (sec)	Extreme (psi)
0	2000	0	0	0	0	0	0
0	2000	0	0	0	0	0	0
0	2000	0	0	0	0	0	0
0	2000	0	0	0	0	0	0
0	2000	0	0	0	0	0	0
0	2000	0	0	0	0	0	0
0	2000	0	0	0	0	0	0
0	2000	0	0	0	0	0	0
0	2000	0	0	0	0	0	0
0	2000	0	0	0	0	0	0
0	2000	0	0	0	0	0	0
0	2000	0	0	0	0	0	0
0	2000	0	0	0	0	0	0
0	2000	0	0	0	0	0	0
0	2000	0	0	0	0	0	0
0	2000	0	0	0	0	0	0
0	2000	0	0	0	0	0	0
0	2000	0	0	0	0	0	0
0	2000	0	0	0	0	0	0
0	2000	0	0	0	0	0	0
2026	2018	4	19	9	49	28	203



Machine model	SerialNo	Operating Hours	Reading Date
L350F	1909	3657.4	04/06/2019

**Low engine oil level at start
Total number of occurrences = 14**

Op hours	Year	Month	Day	Hour	Minute
* 0	2000	0	0	0	0
* 0	2000	0	0	0	0
* 0	2000	0	0	0	0
* 0	2000	0	0	0	0
* 0	2000	0	0	0	0
* 0	2000	0	0	0	0
* 0	2000	0	0	0	0
* 350	2017	8	8	14	11
* 350	2017	8	9	11	43
* 350	2017	8	9	7	55
* 350	2017	8	8	14	23
* 350	2017	8	8	14	17
* 350	2017	8	8	14	16
* 352	2017	8	9	17	43
* 715	2017	10	3	13	42
* 737	2017	10	6	7	7
* 1577	2018	2	5	17	51
* 1577	2018	2	5	17	40
* 1744	2018	2	28	5	21
* 1933	2018	4	5	9	44
* 3572	2019	5	10	11	21



Machine model	SerialNo	Operating Hours	Reading Date
L350F	1909	3657.4	04/06/2019

**Low Air filter pressure
Total number of occurrences = 0**

Op hours	Year	Month	Day	Hour	Minute	Duration (sec)
0	2000	0	0	0	0	0
0	2000	0	0	0	0	0
0	2000	0	0	0	0	0
0	2000	0	0	0	0	0
0	2000	0	0	0	0	0
0	2000	0	0	0	0	0
0	2000	0	0	0	0	0
0	2000	0	0	0	0	0
0	2000	0	0	0	0	0
0	2000	0	0	0	0	0
0	2000	0	0	0	0	0
0	2000	0	0	0	0	0
0	2000	0	0	0	0	0
0	2000	0	0	0	0	0
0	2000	0	0	0	0	0
0	2000	0	0	0	0	0
0	2000	0	0	0	0	0
0	2000	0	0	0	0	0
0	2000	0	0	0	0	0
0	2000	0	0	0	0	0



Machine model	SerialNo	Operating Hours	Reading Date
L350F	1909	3657.4	04/06/2019

**Starter overheating
Total number of occurrences = 2**

Op hours	Year	Month	Day	Hour	Minute
0	2000	0	0	0	0
0	2000	0	0	0	0
0	2000	0	0	0	0
0	2000	0	0	0	0
0	2000	0	0	0	0
0	2000	0	0	0	0
0	2000	0	0	0	0
0	2000	0	0	0	0
0	2000	0	0	0	0
0	2000	0	0	0	0
0	2000	0	0	0	0
0	2000	0	0	0	0
0	2000	0	0	0	0
0	2000	0	0	0	0
0	2000	0	0	0	0
0	2000	0	0	0	0
0	2000	0	0	0	0
0	2000	0	0	0	0
0	2000	0	0	0	0
0	2000	0	0	0	0
0	2000	0	0	0	0
0	2000	0	0	0	0
0	2000	0	0	0	0
0	2000	0	0	0	0
0	2000	0	0	0	0
182	2017	7	17	15	44
182	2017	7	17	15	42



Machine model	SerialNo	Operating Hours	Reading Date
L350F	1909	3657.4	04/06/2019

High voltage
Total number of occurrences = 0

Op hours	Year	Month	Day	Hour	Minute	Duration (sec)	Extreme value
0	2000	0	0	0	0	0	0.0
0	2000	0	0	0	0	0	0.0
0	2000	0	0	0	0	0	0.0
0	2000	0	0	0	0	0	0.0
0	2000	0	0	0	0	0	0.0
0	2000	0	0	0	0	0	0.0
0	2000	0	0	0	0	0	0.0
0	2000	0	0	0	0	0	0.0
0	2000	0	0	0	0	0	0.0
0	2000	0	0	0	0	0	0.0
0	2000	0	0	0	0	0	0.0
0	2000	0	0	0	0	0	0.0
0	2000	0	0	0	0	0	0.0
0	2000	0	0	0	0	0	0.0
0	2000	0	0	0	0	0	0.0
0	2000	0	0	0	0	0	0.0
0	2000	0	0	0	0	0	0.0
0	2000	0	0	0	0	0	0.0
0	2000	0	0	0	0	0	0.0
0	2000	0	0	0	0	0	0.0
0	2000	0	0	0	0	0	0.0
0	2000	0	0	0	0	0	0.0
0	2000	0	0	0	0	0	0.0
0	2000	0	0	0	0	0	0.0



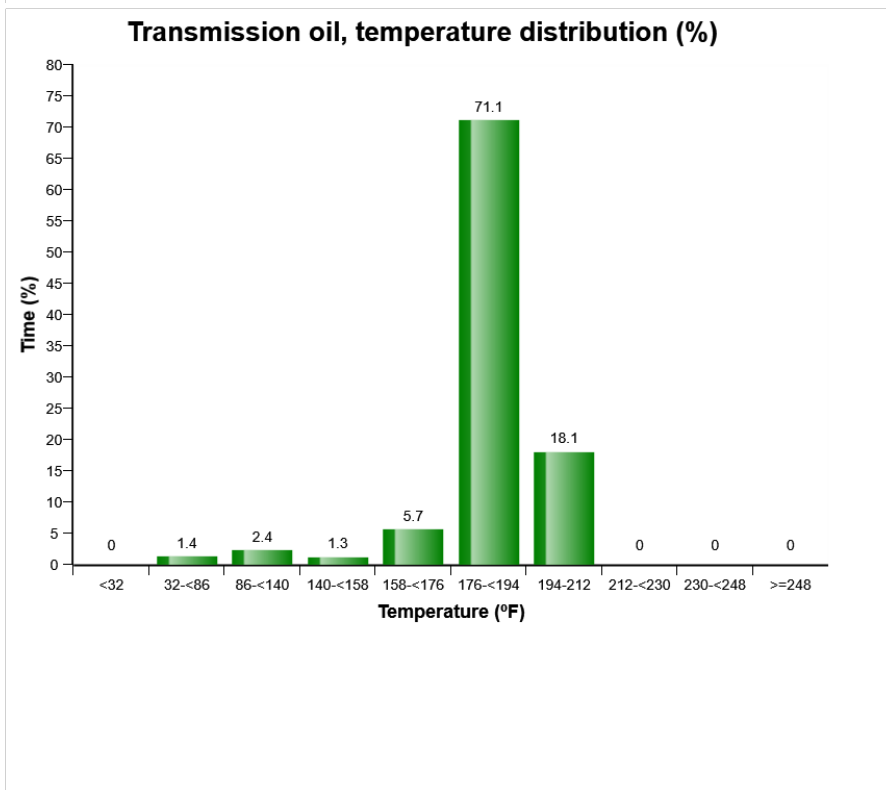
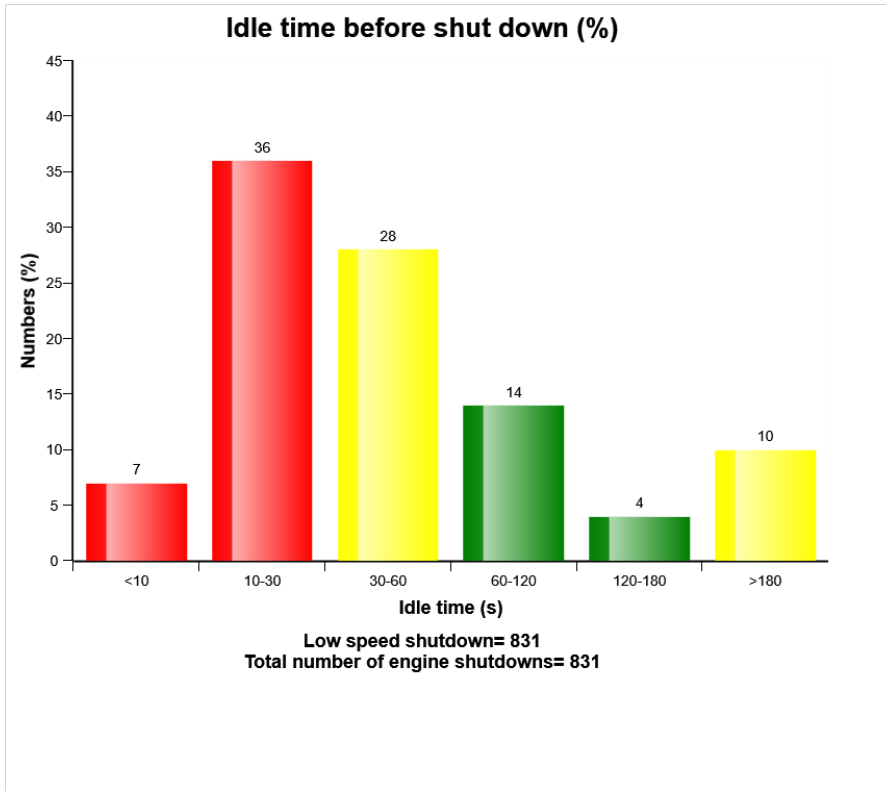
Machine model	SerialNo	Operating Hours	Reading Date
L350F	1909	3657.4	04/06/2019

Low voltage
Total number of occurrences = 0

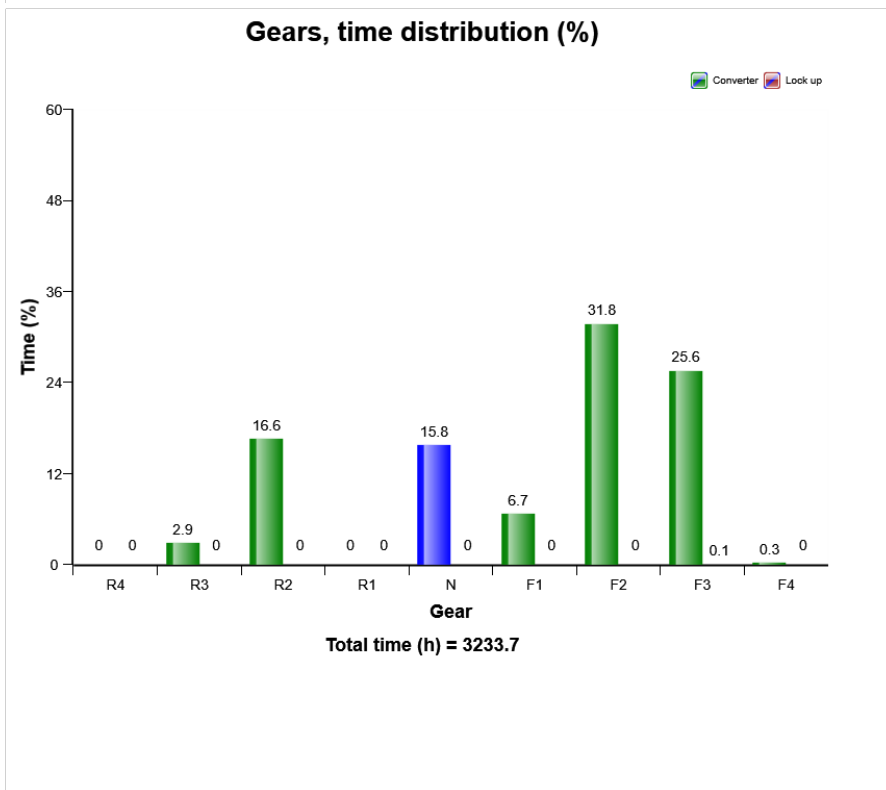
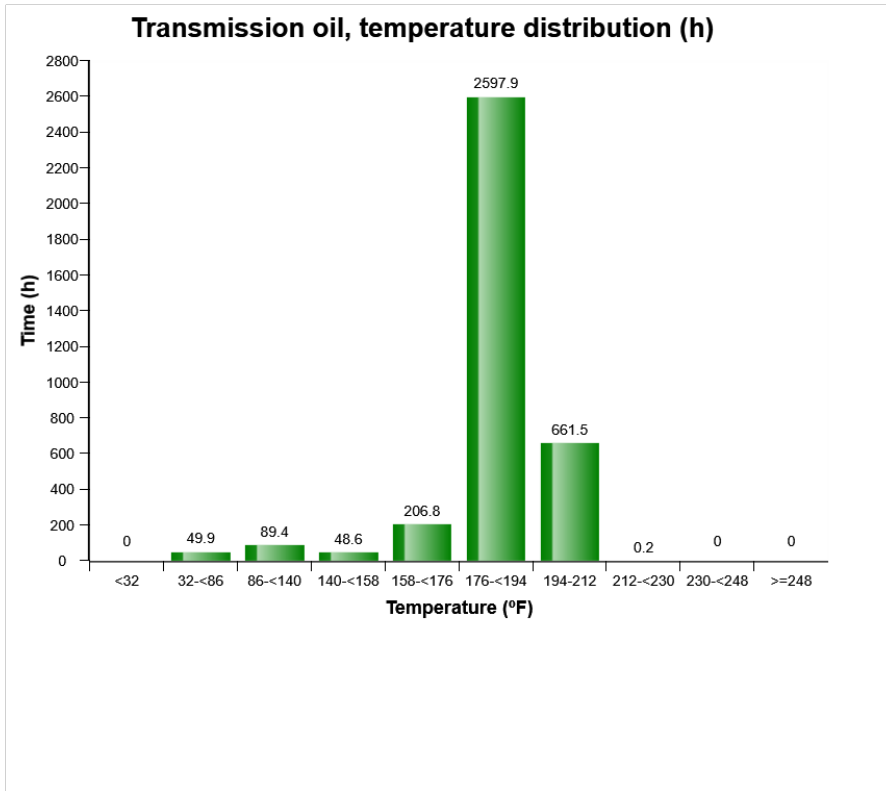
Op hours	Year	Month	Day	Hour	Minute	Duration (sec)	Extreme value
0	2000	0	0	0	0	0	0.0
0	2000	0	0	0	0	0	0.0
0	2000	0	0	0	0	0	0.0
0	2000	0	0	0	0	0	0.0
0	2000	0	0	0	0	0	0.0
0	2000	0	0	0	0	0	0.0
0	2000	0	0	0	0	0	0.0
0	2000	0	0	0	0	0	0.0
0	2000	0	0	0	0	0	0.0
0	2000	0	0	0	0	0	0.0
0	2000	0	0	0	0	0	0.0
0	2000	0	0	0	0	0	0.0
0	2000	0	0	0	0	0	0.0
0	2000	0	0	0	0	0	0.0
0	2000	0	0	0	0	0	0.0
0	2000	0	0	0	0	0	0.0
0	2000	0	0	0	0	0	0.0
0	2000	0	0	0	0	0	0.0
0	2000	0	0	0	0	0	0.0
0	2000	0	0	0	0	0	0.0
0	2000	0	0	0	0	0	0.0
0	2000	0	0	0	0	0	0.0



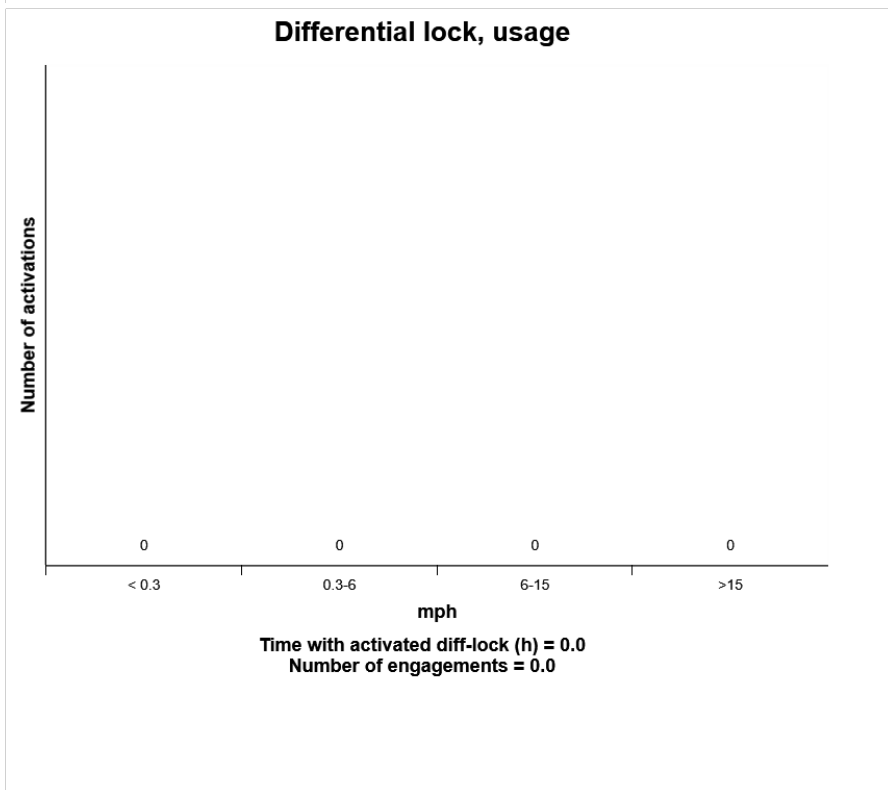
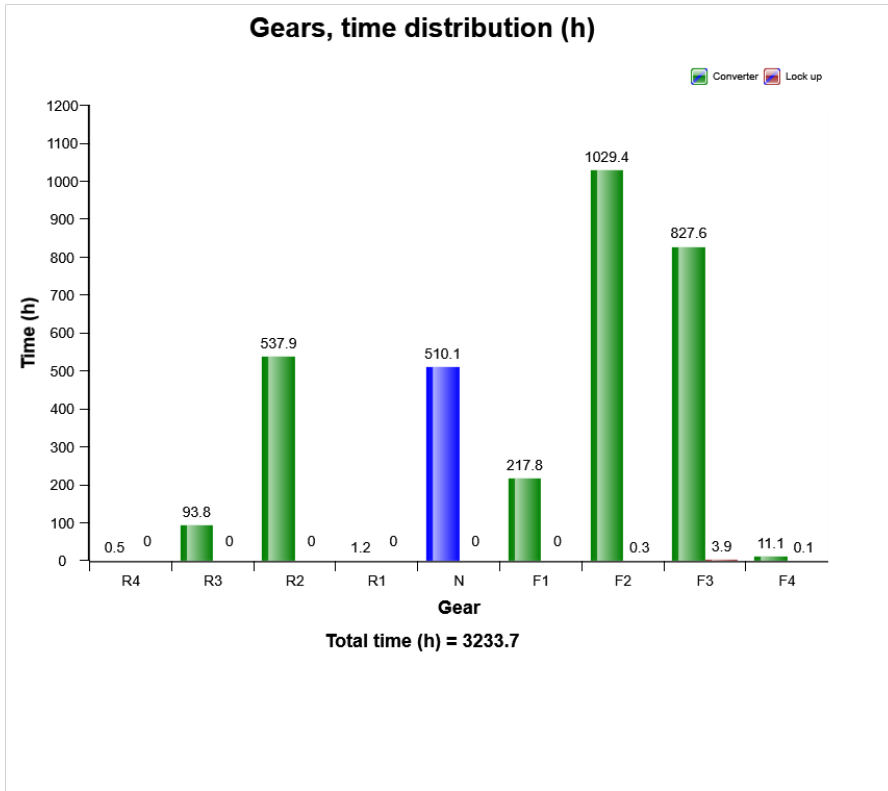
Machine model	SerialNo	Operating Hours	Reading Date
L350F	1909	3657.4	04/06/2019



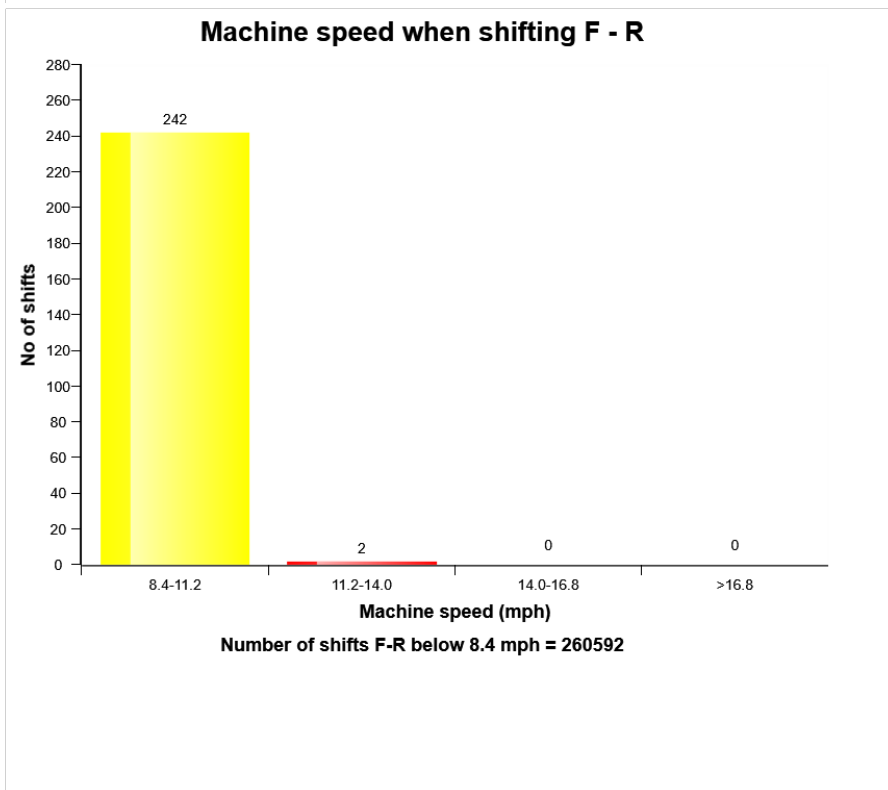
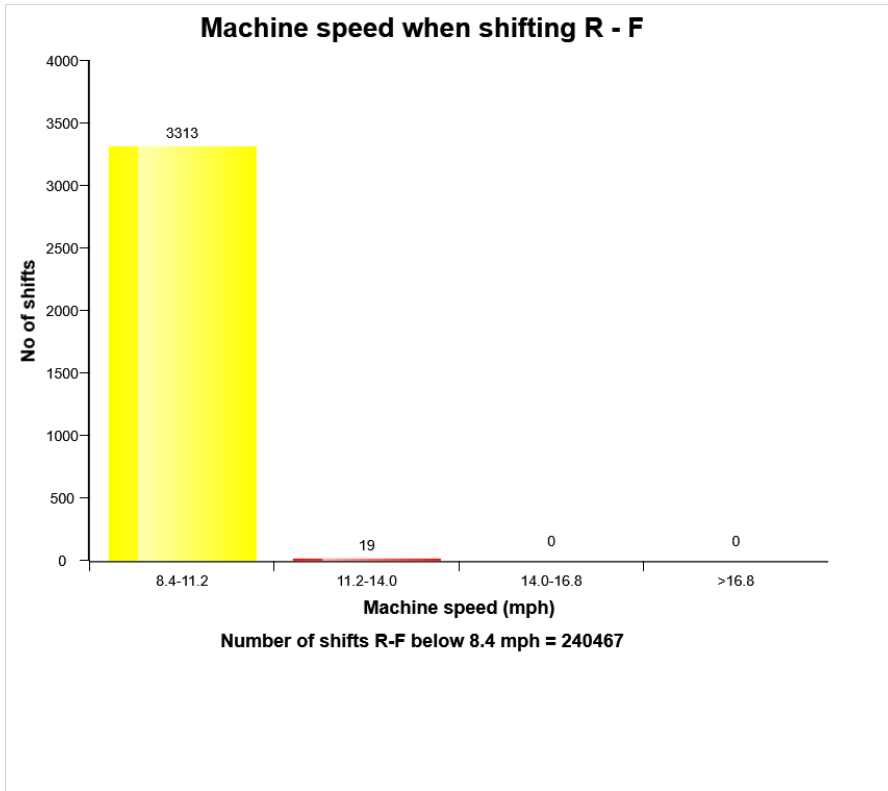
Machine model	SerialNo	Operating Hours	Reading Date
L350F	1909	3657.4	04/06/2019



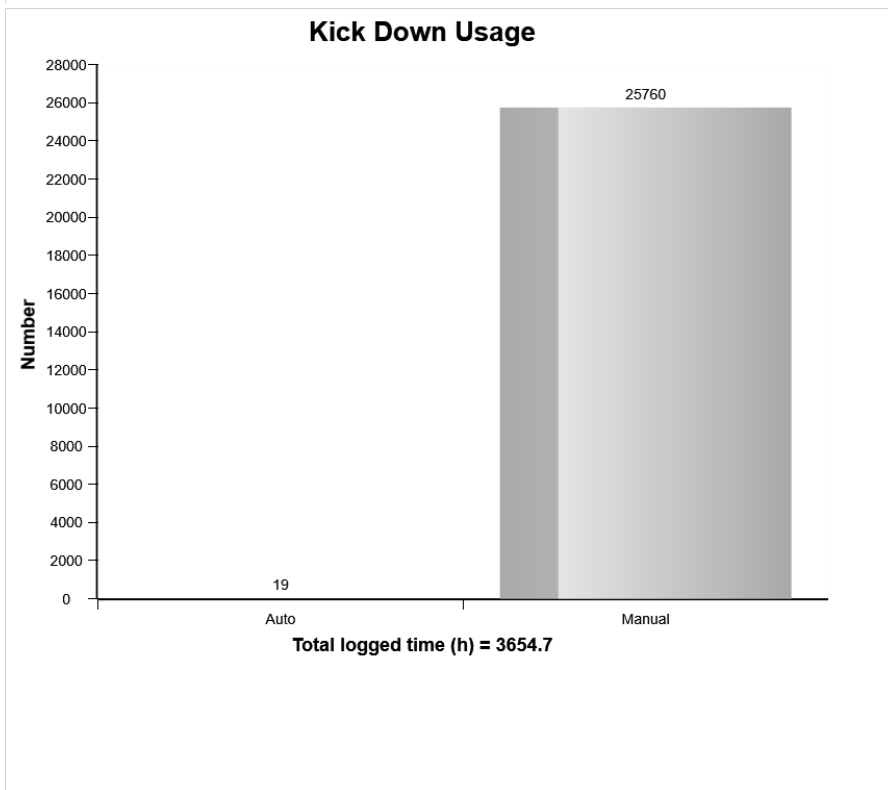
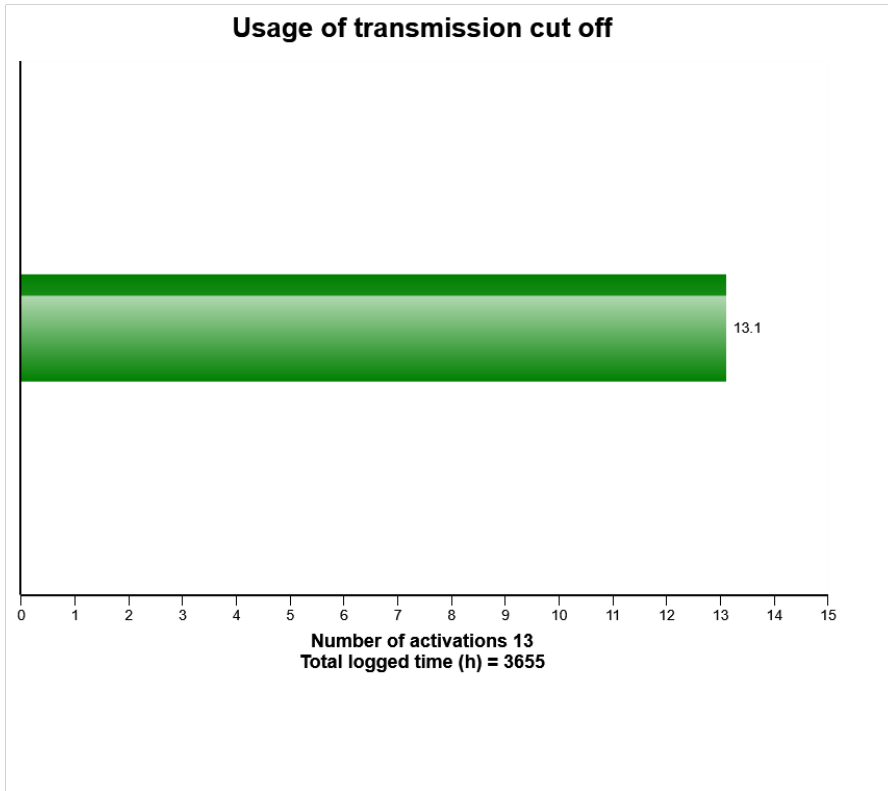
Machine model	SerialNo	Operating Hours	Reading Date
L350F	1909	3657.4	04/06/2019



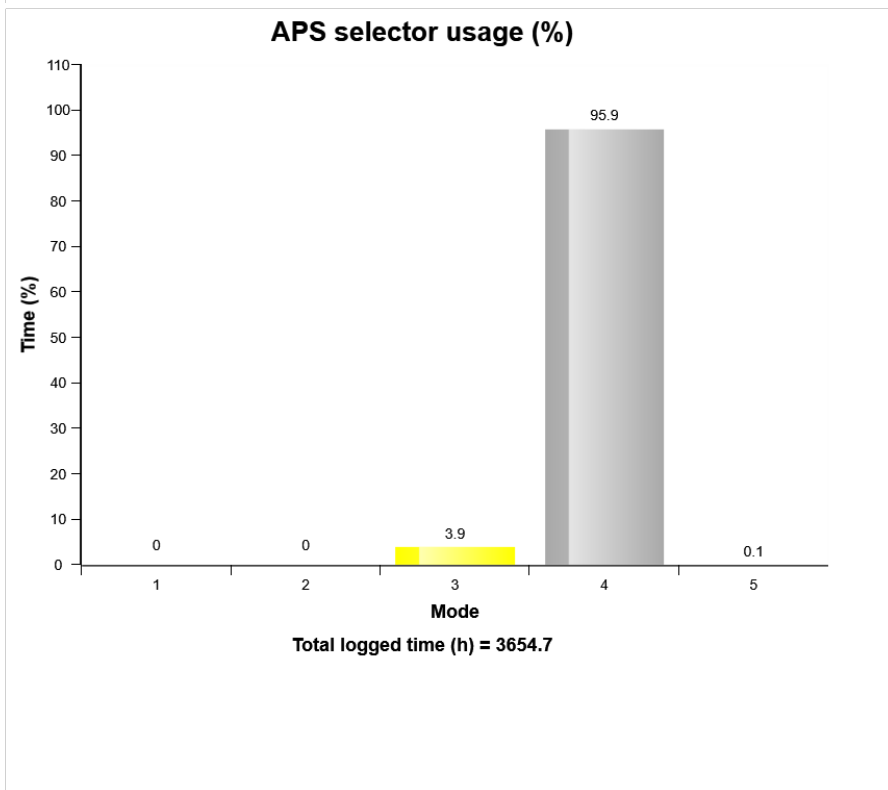
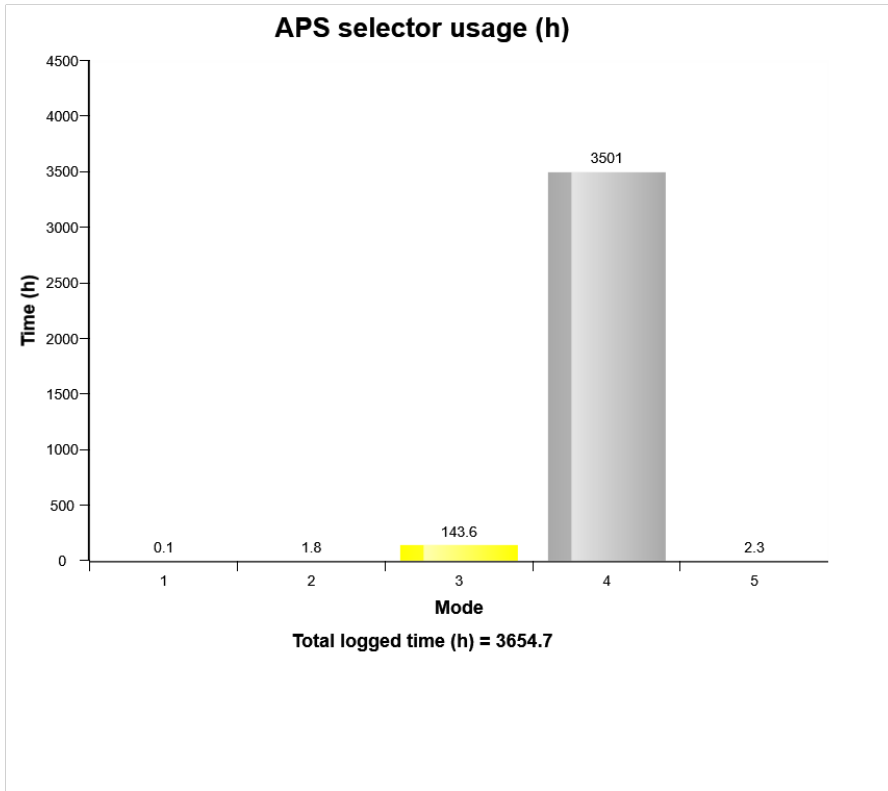
Machine model	SerialNo	Operating Hours	Reading Date
L350F	1909	3657.4	04/06/2019



Machine model	SerialNo	Operating Hours	Reading Date
L350F	1909	3657.4	04/06/2019



Machine model	SerialNo	Operating Hours	Reading Date
L350F	1909	3657.4	04/06/2019



Machine model L350F	SerialNo 1909	Operating Hours 3657.4	Reading Date 04/06/2019
------------------------	------------------	---------------------------	----------------------------

**Transmission oil temperature high
Total number of occurrences = 0**

Op hours	Year	Month	Day	Hour	Minute	Duration (sec)	Extreme (° F)
0	2000	0	0	0	0	0	32
0	2000	0	0	0	0	0	32
0	2000	0	0	0	0	0	32
0	2000	0	0	0	0	0	32
0	2000	0	0	0	0	0	32
0	2000	0	0	0	0	0	32
0	2000	0	0	0	0	0	32
0	2000	0	0	0	0	0	32
0	2000	0	0	0	0	0	32
0	2000	0	0	0	0	0	32
0	2000	0	0	0	0	0	32
0	2000	0	0	0	0	0	32
0	2000	0	0	0	0	0	32
0	2000	0	0	0	0	0	32
0	2000	0	0	0	0	0	32
0	2000	0	0	0	0	0	32
0	2000	0	0	0	0	0	32
0	2000	0	0	0	0	0	32
0	2000	0	0	0	0	0	32
0	2000	0	0	0	0	0	32
0	2000	0	0	0	0	0	32
0	2000	0	0	0	0	0	32
0	2000	0	0	0	0	0	32



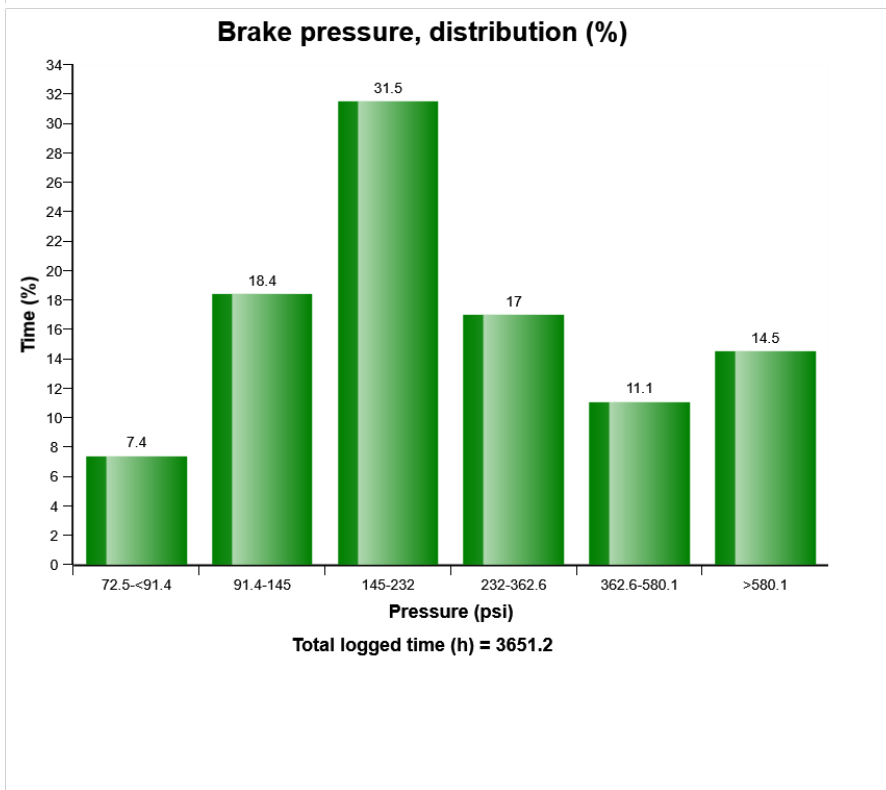
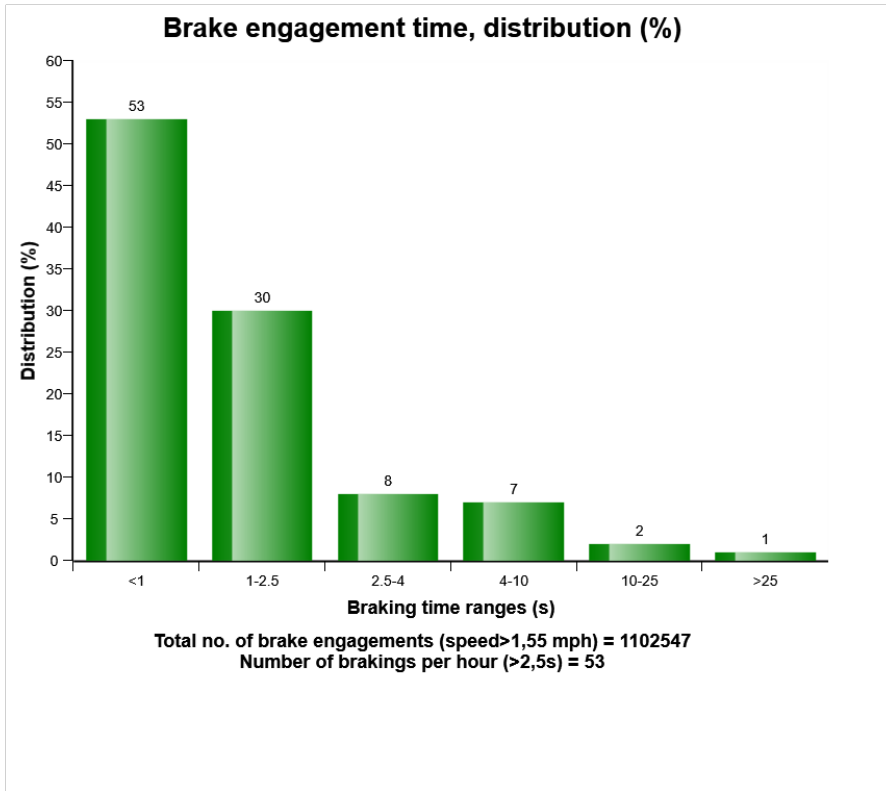
Machine model	SerialNo	Operating Hours	Reading Date
L350F	1909	3657.4	04/06/2019

**Transmission oil pressure low
Total number of occurrences = 69**

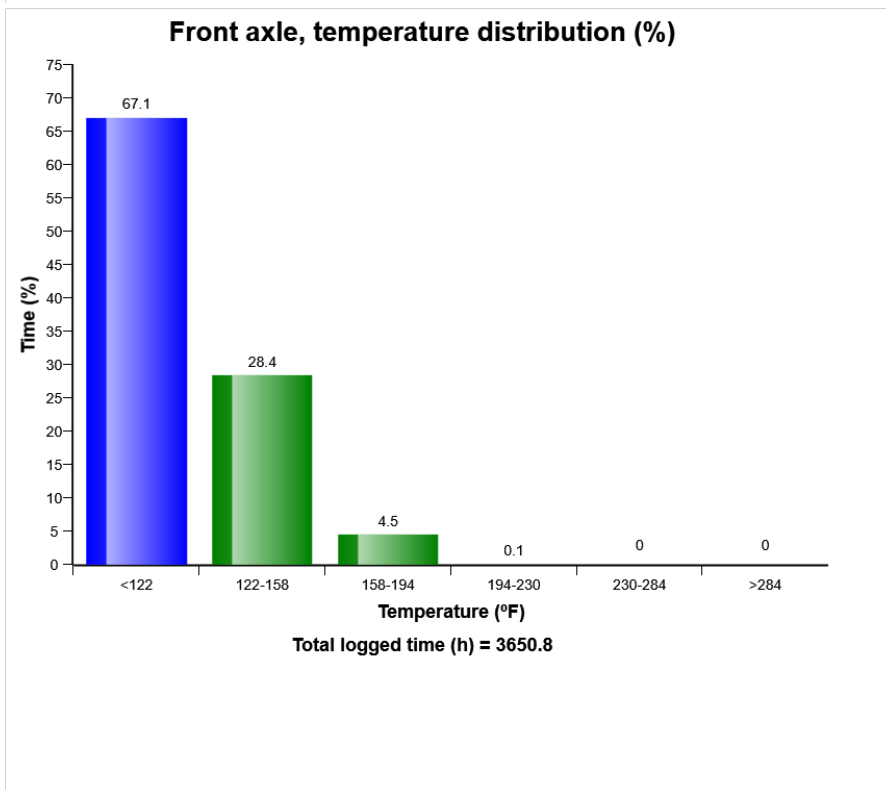
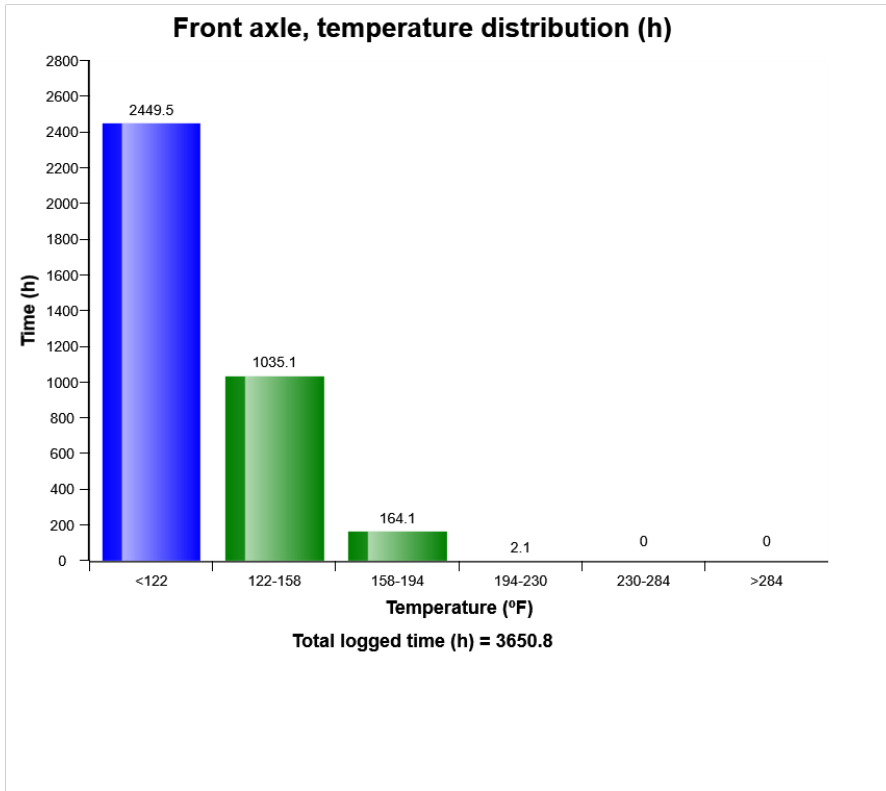
Op hours	Year	Month	Day	Hour	Minute	Duration (sec)	Extreme (psi)
2570	2018	7	17	11	39	0	400
2600	2018	7	23	11	37	0	418
2620	2018	7	25	8	53	0	493
2629	2018	7	26	5	8	0	508
2697	2018	8	3	11	47	0	441
2702	2018	8	7	9	12	0	474
2708	2018	8	7	15	11	0	466
2713	2018	8	8	8	41	0	453
2731	2018	8	9	15	24	0	464
2756	2018	8	14	9	43	0	376
2812	2018	8	22	7	41	0	471
2812	2018	8	22	7	32	0	477
2850	2018	8	28	11	12	0	477
2966	2018	9	18	11	11	0	486
2968	2018	9	18	15	7	0	482
2969	2018	9	18	15	39	0	468
2986	2018	9	20	14	41	0	482
3037	2018	9	28	14	46	1	58
3461	2019	4	24	16	29	0	544
3647	2019	5	22	12	36	0	461



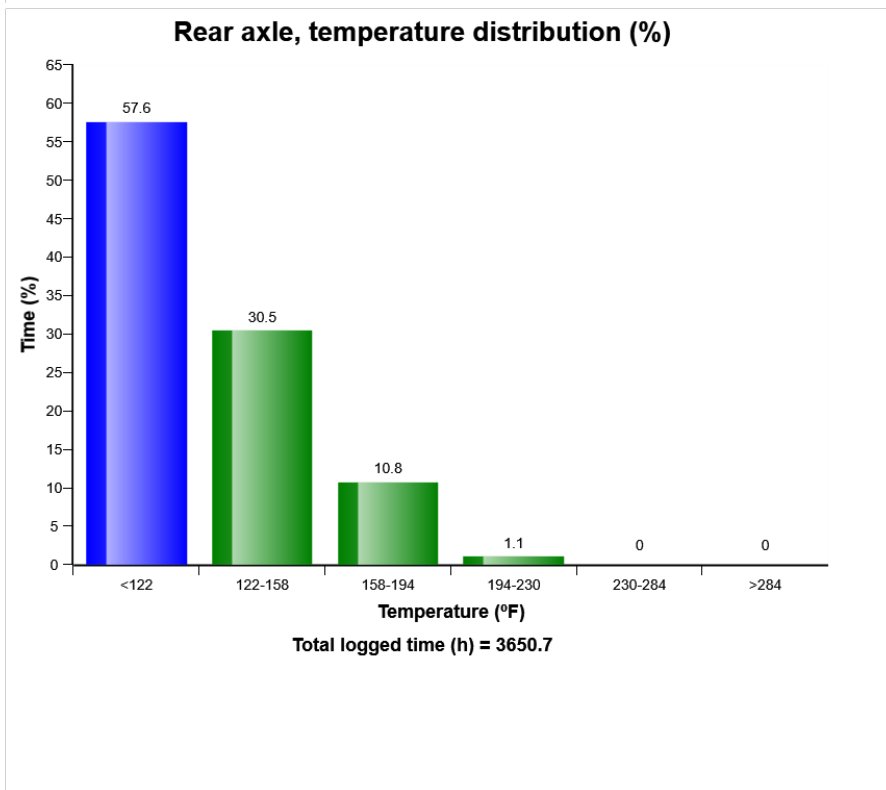
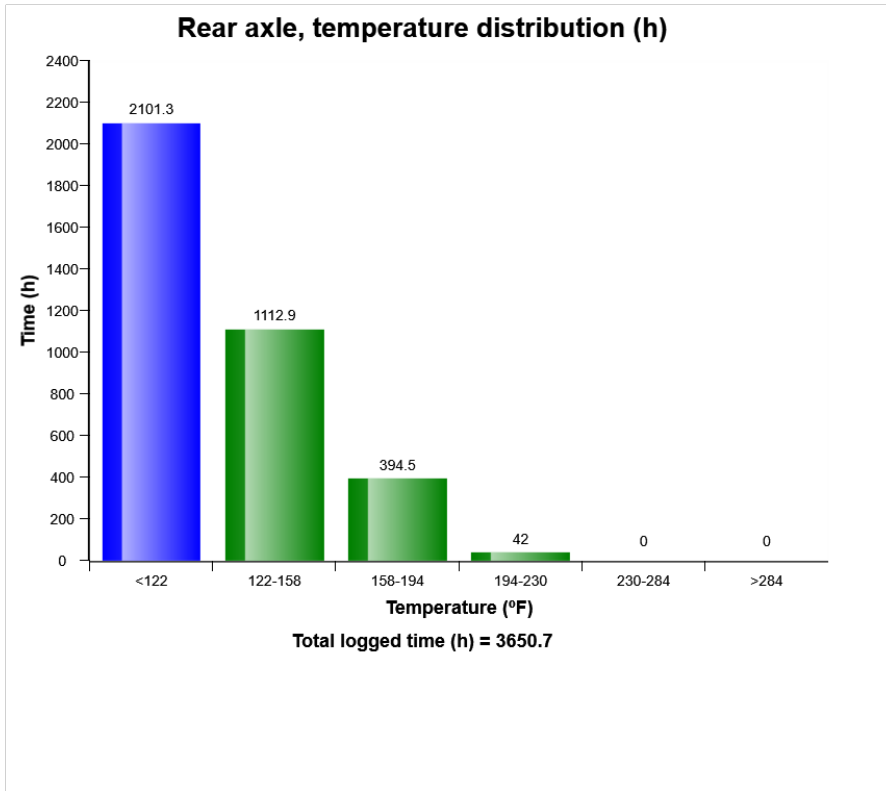
Machine model	SerialNo	Operating Hours	Reading Date
L350F	1909	3657.4	04/06/2019



Machine model	SerialNo	Operating Hours	Reading Date
L350F	1909	3657.4	04/06/2019

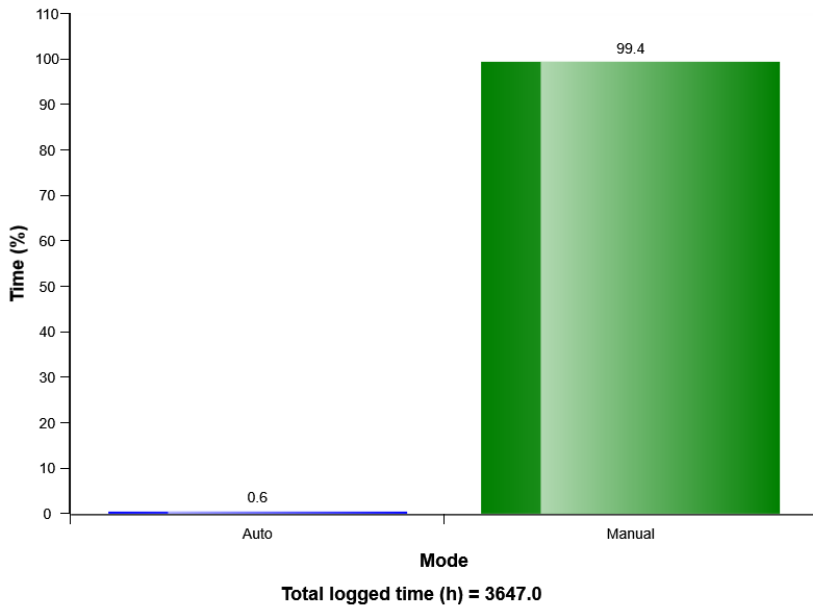


Machine model	SerialNo	Operating Hours	Reading Date
L350F	1909	3657.4	04/06/2019

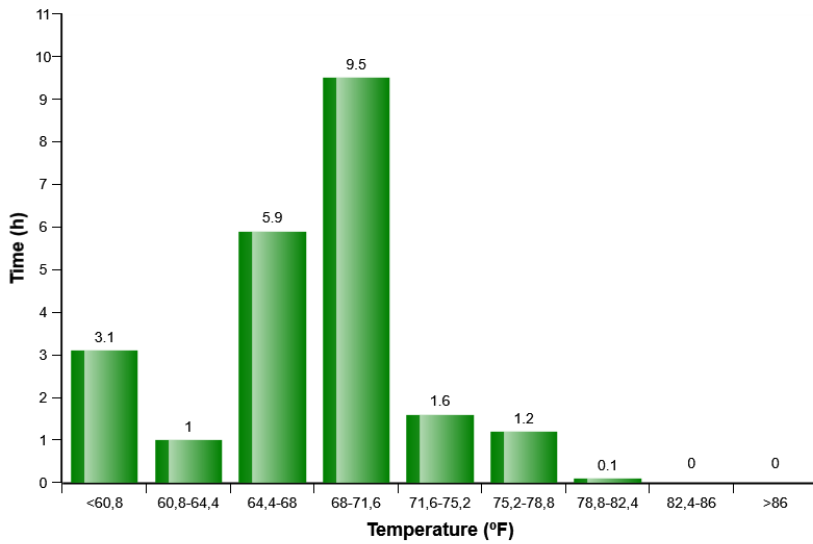


Machine model	SerialNo	Operating Hours	Reading Date
L350F	1909	3657.4	04/06/2019

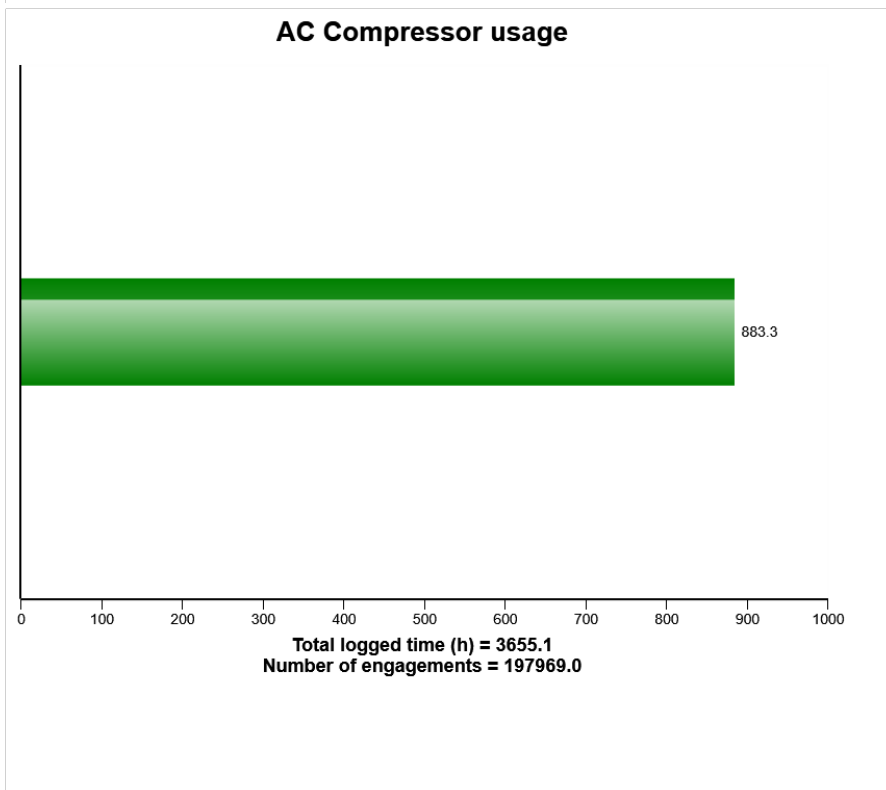
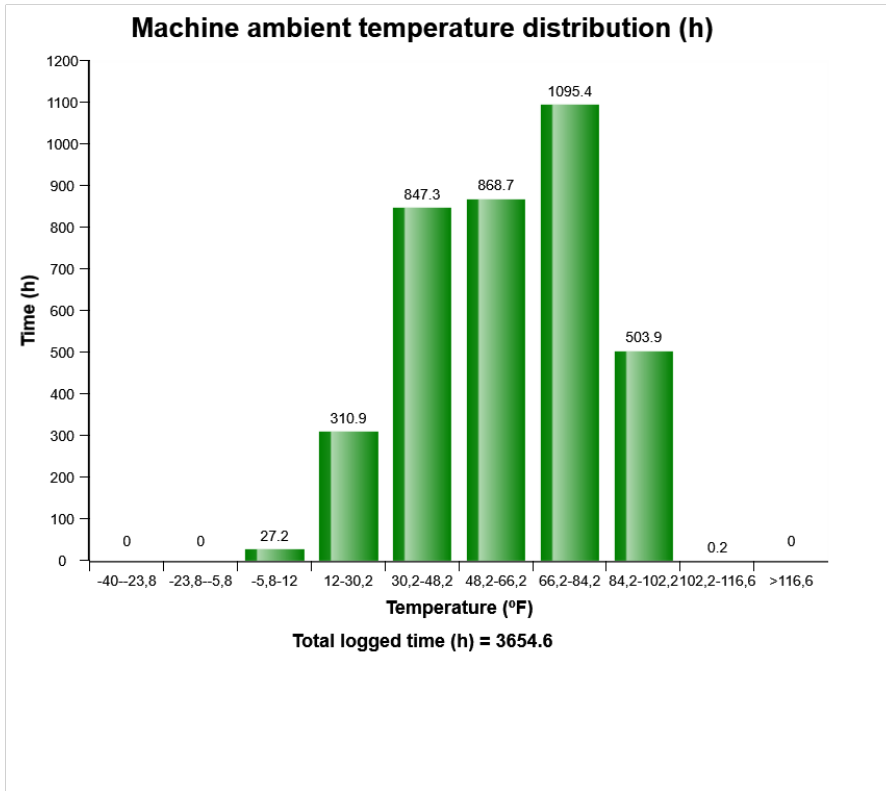
HVAC Auto - Manual mode selection distribution (%)



HVAC air temperature setting in auto control mode distribution (h)



Machine model	SerialNo	Operating Hours	Reading Date
L350F	1909	3657.4	04/06/2019



Machine model	SerialNo	Operating Hours	Reading Date
L350F	1909	3657.4	04/06/2019

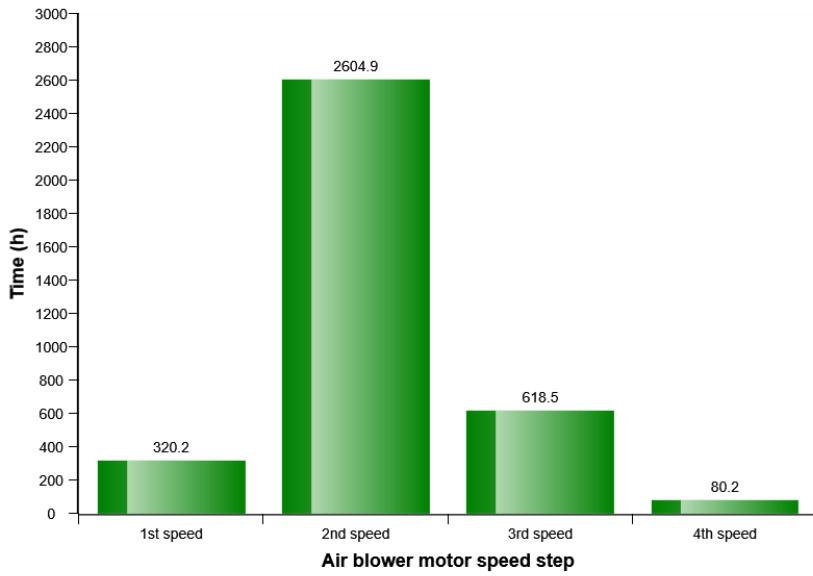
AC High Pressure
Total number of occurrences = 0

Op hours	Year	Month	Day	Hours	Minute	Duration (sec)	Extreme (° F)
0	2000	0	0	0	0	0	32
0	2000	0	0	0	0	0	32
0	2000	0	0	0	0	0	32
0	2000	0	0	0	0	0	32
0	2000	0	0	0	0	0	32
0	2000	0	0	0	0	0	32
0	2000	0	0	0	0	0	32
0	2000	0	0	0	0	0	32
0	2000	0	0	0	0	0	32
0	2000	0	0	0	0	0	32
0	2000	0	0	0	0	0	32
0	2000	0	0	0	0	0	32
0	2000	0	0	0	0	0	32
0	2000	0	0	0	0	0	32
0	2000	0	0	0	0	0	32
0	2000	0	0	0	0	0	32
0	2000	0	0	0	0	0	32
0	2000	0	0	0	0	0	32
0	2000	0	0	0	0	0	32
0	2000	0	0	0	0	0	32
0	2000	0	0	0	0	0	32
0	2000	0	0	0	0	0	32
0	2000	0	0	0	0	0	32
0	2000	0	0	0	0	0	32
0	2000	0	0	0	0	0	32
0	2000	0	0	0	0	0	32

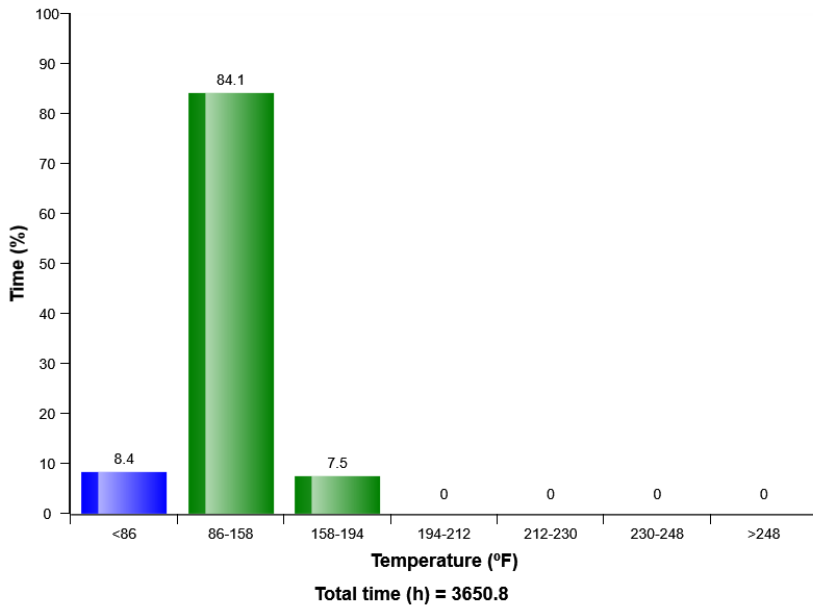


Machine model	SerialNo	Operating Hours	Reading Date
L350F	1909	3657.4	04/06/2019

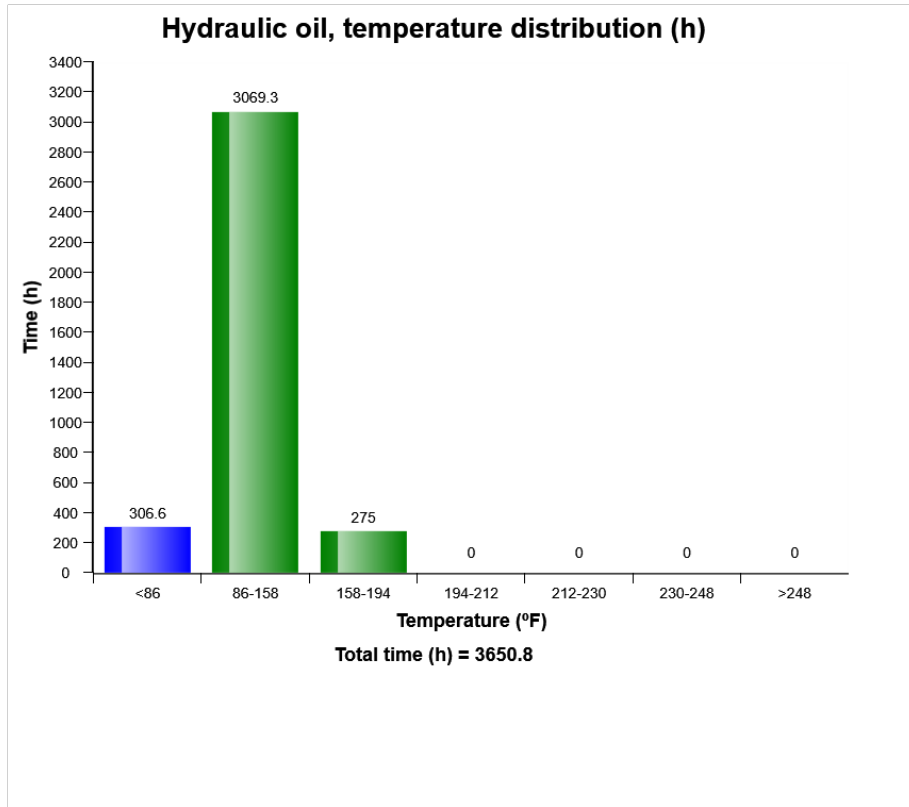
HVAC air blower motor speed in manual mode distribution (h)



Hydraulic oil, temperature distribution (%)



Machine model	SerialNo	Operating Hours	Reading Date
L350F	1909	3657.4	04/06/2019



Machine model	SerialNo	Operating Hours	Reading Date
L350F	1909	3657.4	04/06/2019

**High hydraulic oil temperature
Total number of occurrences = 0**

Op hours	Year	Month	Day	Hour	Minute	Duration (sec)	Extreme (° F)
0	2000	0	0	0	0	0	32
0	2000	0	0	0	0	0	32
0	2000	0	0	0	0	0	32
0	2000	0	0	0	0	0	32
0	2000	0	0	0	0	0	32
0	2000	0	0	0	0	0	32
0	2000	0	0	0	0	0	32
0	2000	0	0	0	0	0	32
0	2000	0	0	0	0	0	32
0	2000	0	0	0	0	0	32
0	2000	0	0	0	0	0	32
0	2000	0	0	0	0	0	32
0	2000	0	0	0	0	0	32
0	2000	0	0	0	0	0	32
0	2000	0	0	0	0	0	32
0	2000	0	0	0	0	0	32
0	2000	0	0	0	0	0	32
0	2000	0	0	0	0	0	32
0	2000	0	0	0	0	0	32
0	2000	0	0	0	0	0	32
0	2000	0	0	0	0	0	32
0	2000	0	0	0	0	0	32
0	2000	0	0	0	0	0	32
0	2000	0	0	0	0	0	32
0	2000	0	0	0	0	0	32
0	2000	0	0	0	0	0	32



Machine model	SerialNo	Operating Hours	Reading Date
L350F	1909	3657.4	04/06/2019

**Low Hydraulic Oil Level
Total number of occurrences = 0**

Op hours	Year	Month	Day	Hour	Minute	Duration (seconds)
0	2000	0	0	0	0	0
0	2000	0	0	0	0	0
0	2000	0	0	0	0	0
0	2000	0	0	0	0	0
0	2000	0	0	0	0	0
0	2000	0	0	0	0	0
0	2000	0	0	0	0	0
0	2000	0	0	0	0	0
0	2000	0	0	0	0	0
0	2000	0	0	0	0	0
0	2000	0	0	0	0	0
0	2000	0	0	0	0	0
0	2000	0	0	0	0	0
0	2000	0	0	0	0	0
0	2000	0	0	0	0	0
0	2000	0	0	0	0	0
0	2000	0	0	0	0	0
0	2000	0	0	0	0	0
0	2000	0	0	0	0	0
0	2000	0	0	0	0	0
0	2000	0	0	0	0	0

