

VOLVO CONSTRUCTION EQUIPMENT MATRIS REPORT

Machine model L180H	SerialNo 4304	Operating Hours 4892.6	Reading Date 08/08/2019
Company name Ascendum Machinery	Dealer	Report Issuer	
Contact name	Technician Brandon Hallowell	Primary Application Hard Virgin Bank	
Site	Workorder	Ground Condition	

MATRIS Reading, Summary / Recommendation



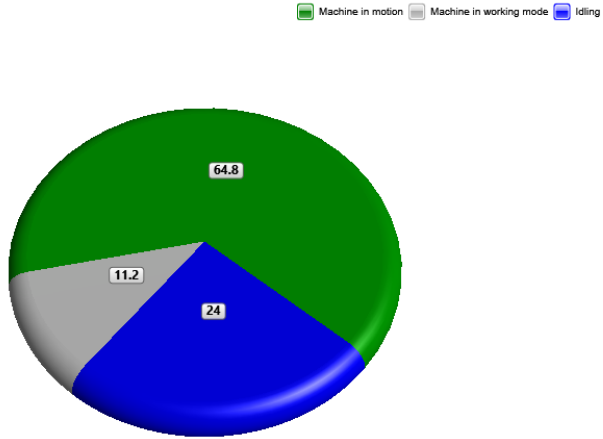
Machine model	SerialNo	Operating Hours	Reading Date
L180H	4304	4892.6	08/08/2019

Main equipment	Type	Equipment
	Tyre size/class	Sold without tyres
	Main Attachment	Sold without attachment
	Extra Counterweight	None
	Ballast	None
	Chains	Not mounted
	Boom Suspension System	Not mounted
	Attachment Interface	Pin-on
	Volume m3 (yd3) / Area m2 (ft2)	
	Attachment make	
	Brake	
	Transmission	



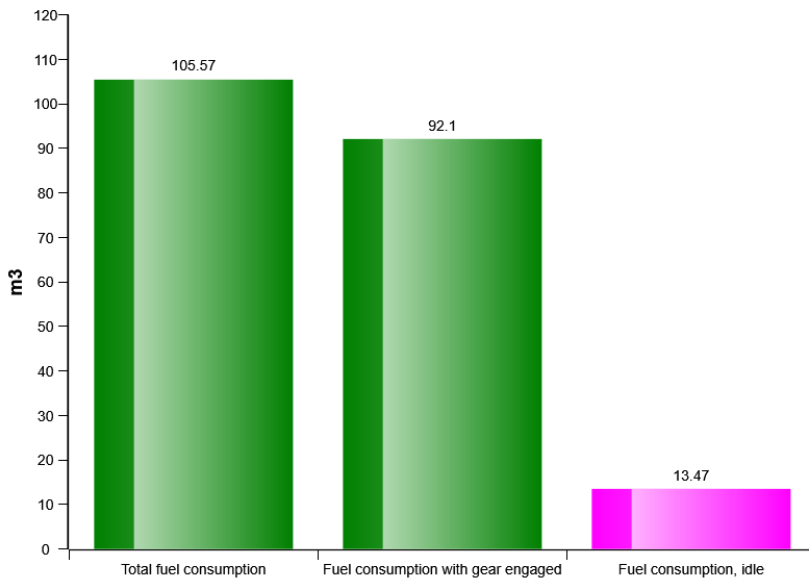
Machine model	SerialNo	Operating Hours	Reading Date
L180H	4304	4892.6	08/08/2019

Machine utilization (%)

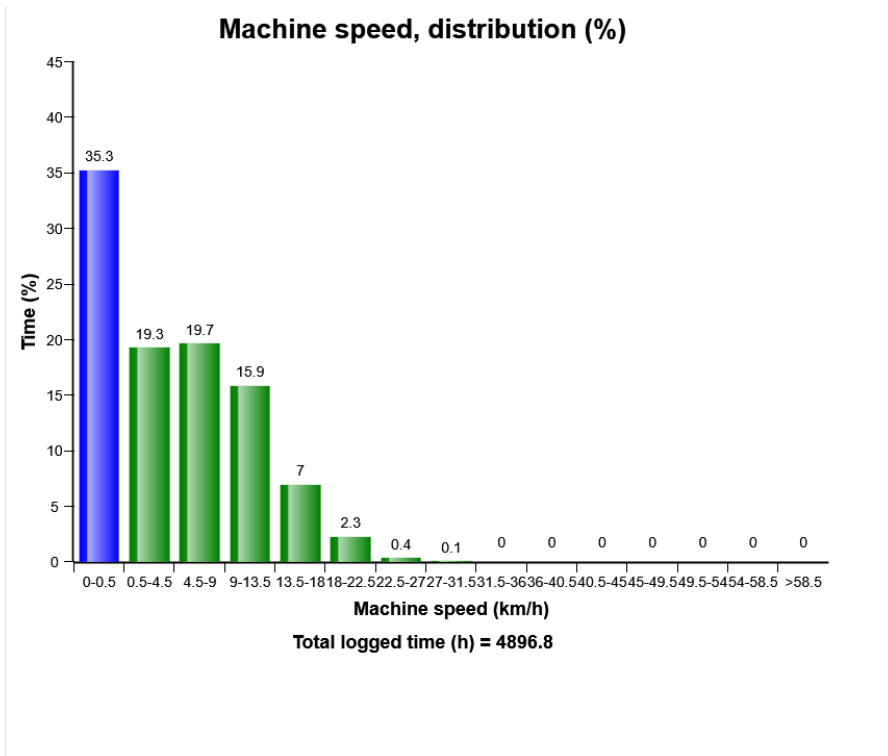
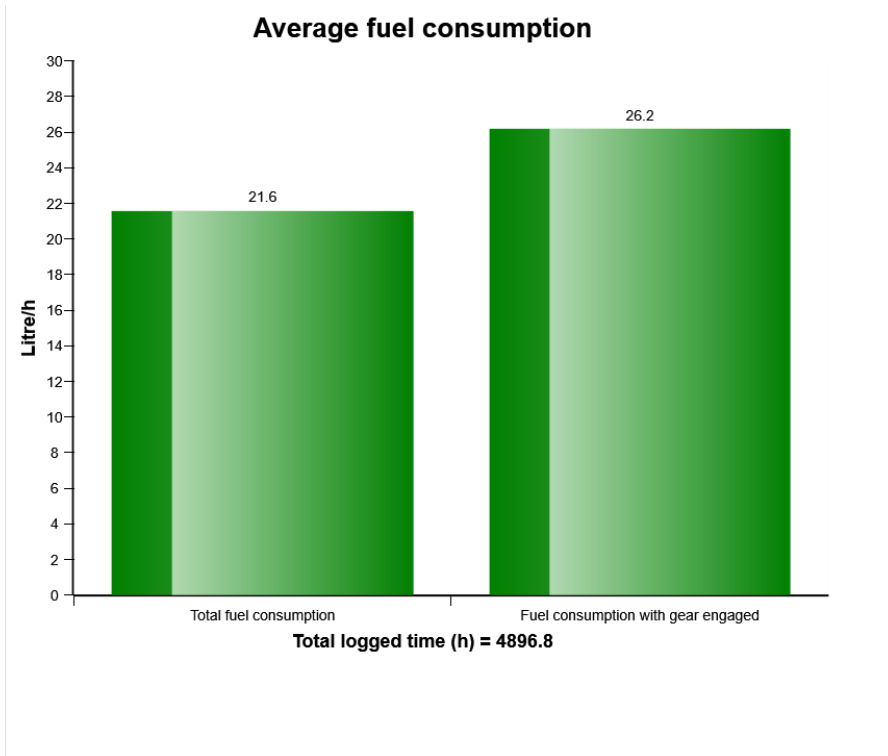


Total time (h) = 4896.8

Fuel consumption

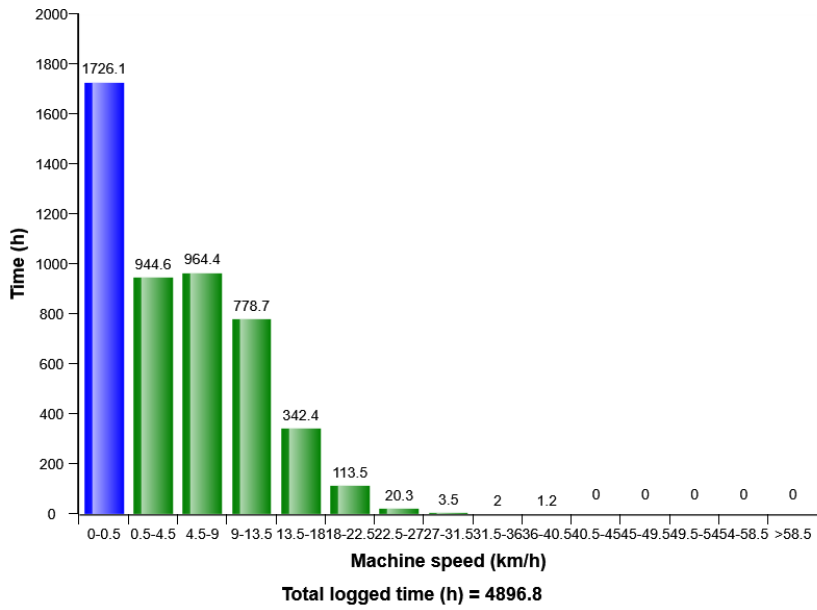


Machine model	SerialNo	Operating Hours	Reading Date
L180H	4304	4892.6	08/08/2019

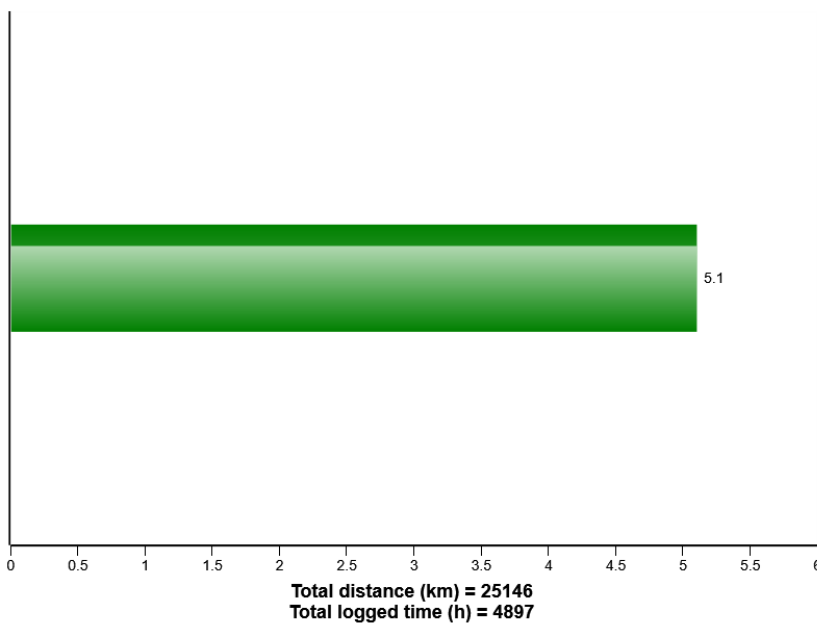


Machine model	SerialNo	Operating Hours	Reading Date
L180H	4304	4892.6	08/08/2019

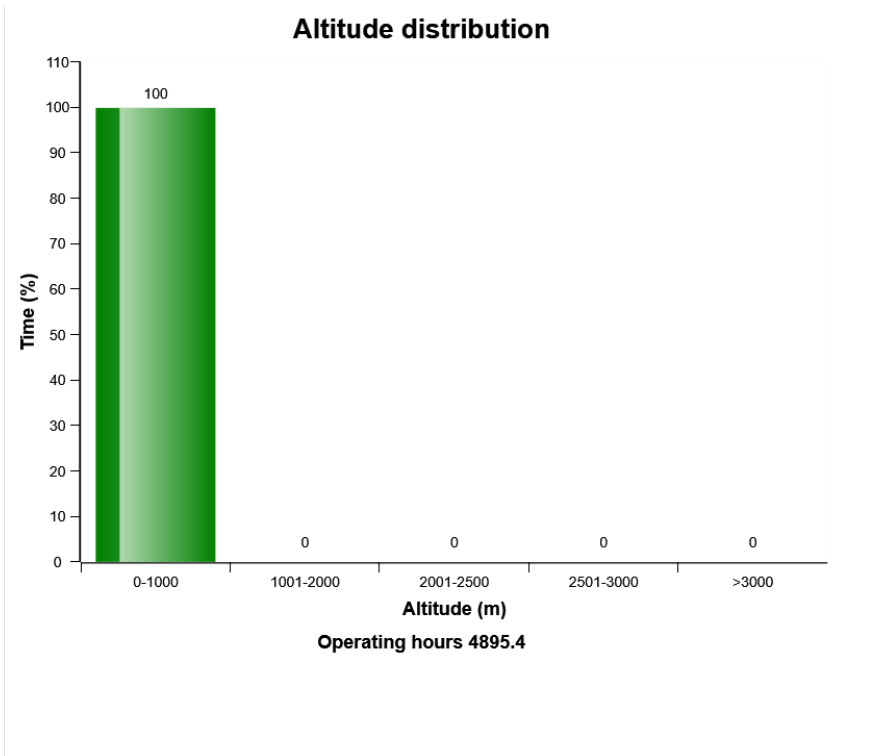
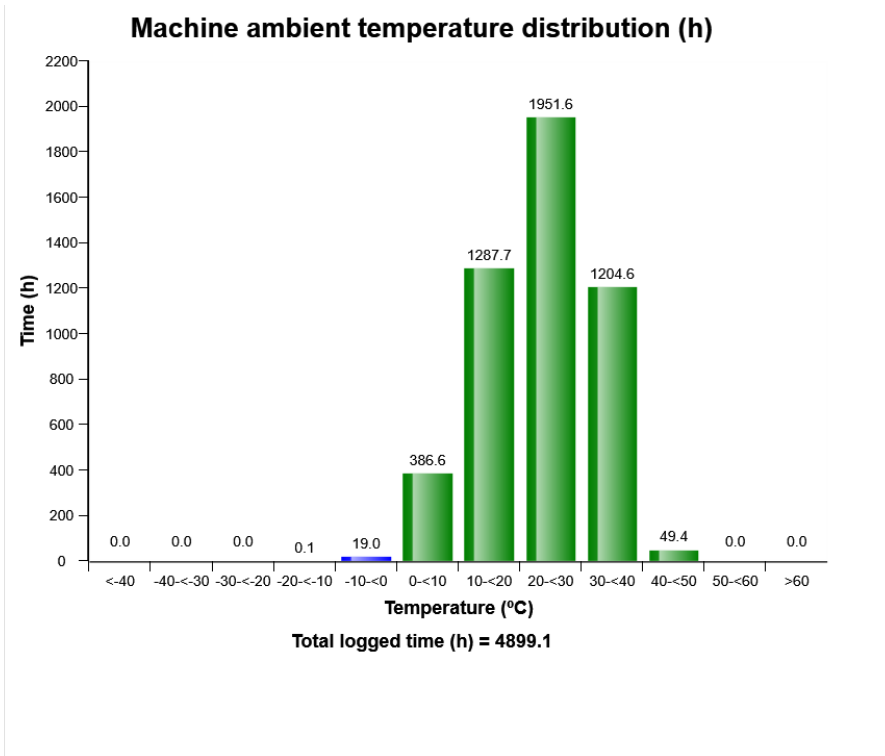
Machine speed, distribution



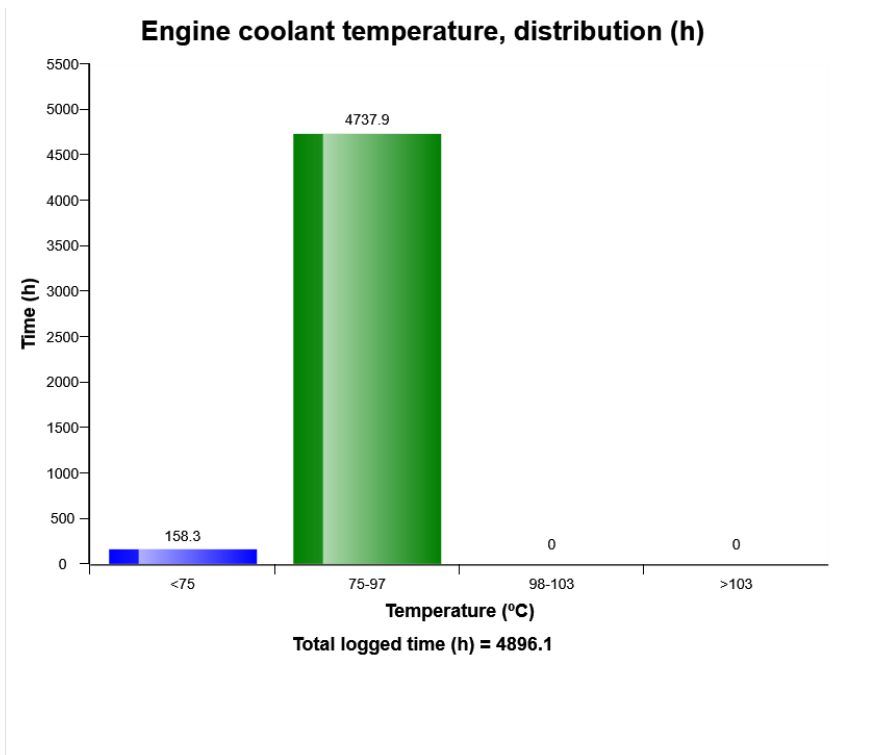
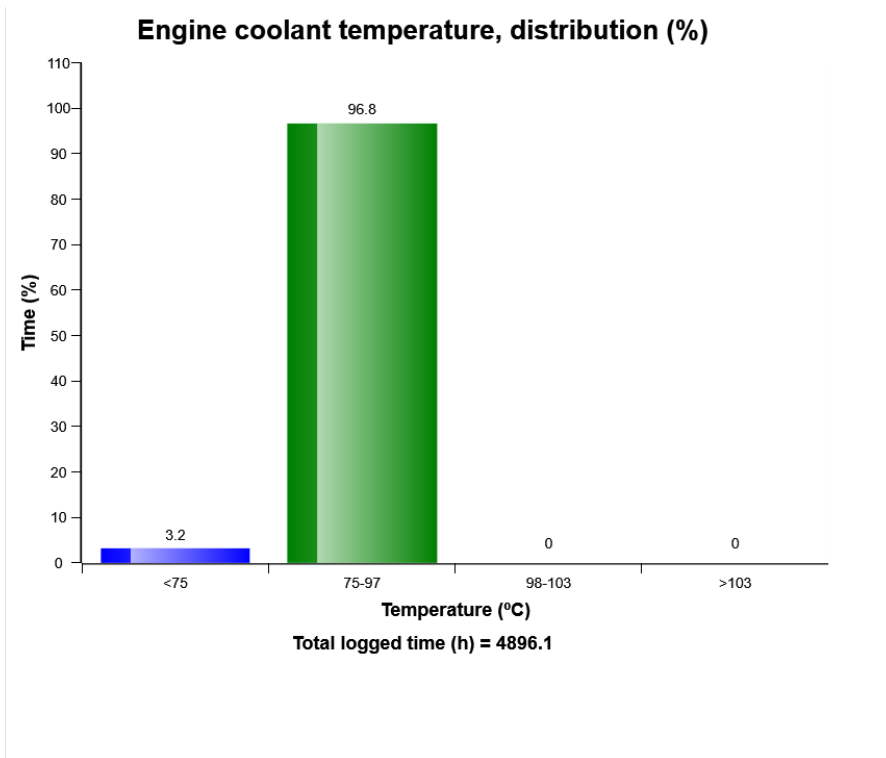
Average speed and distance



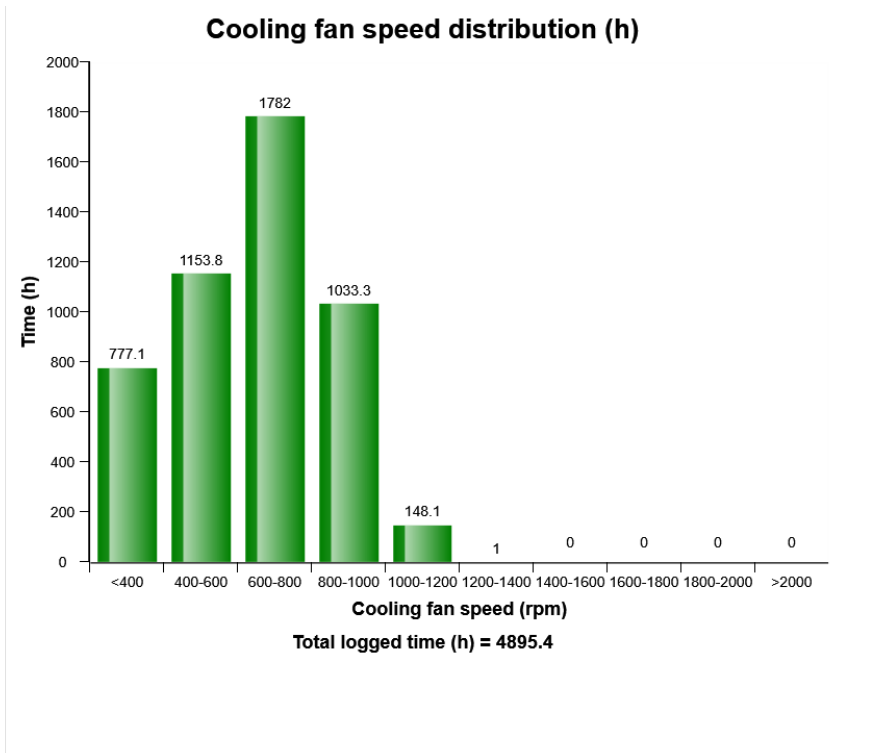
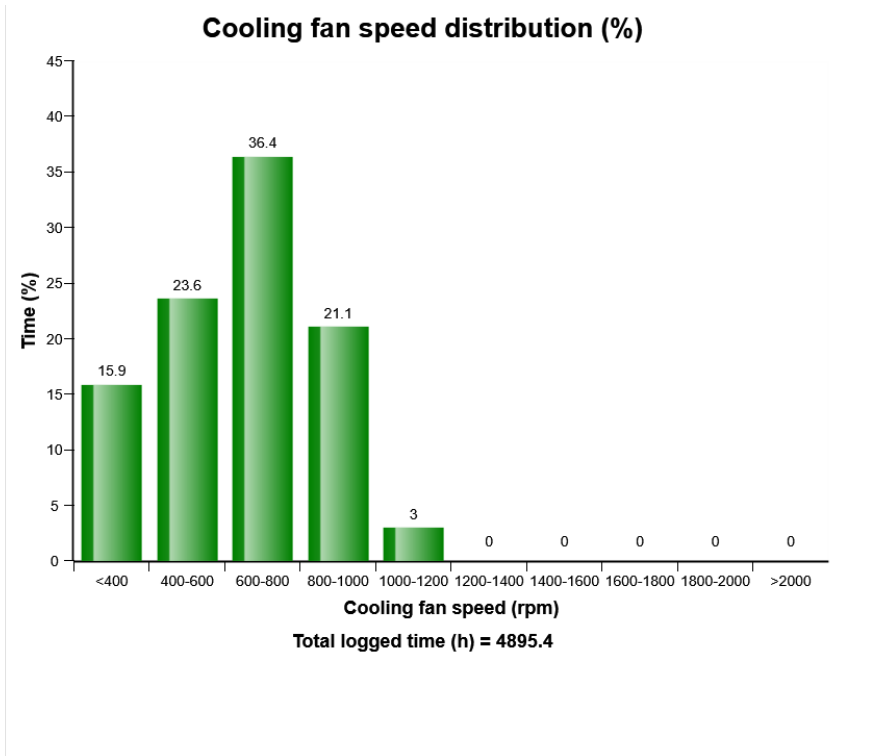
Machine model	SerialNo	Operating Hours	Reading Date
L180H	4304	4892.6	08/08/2019



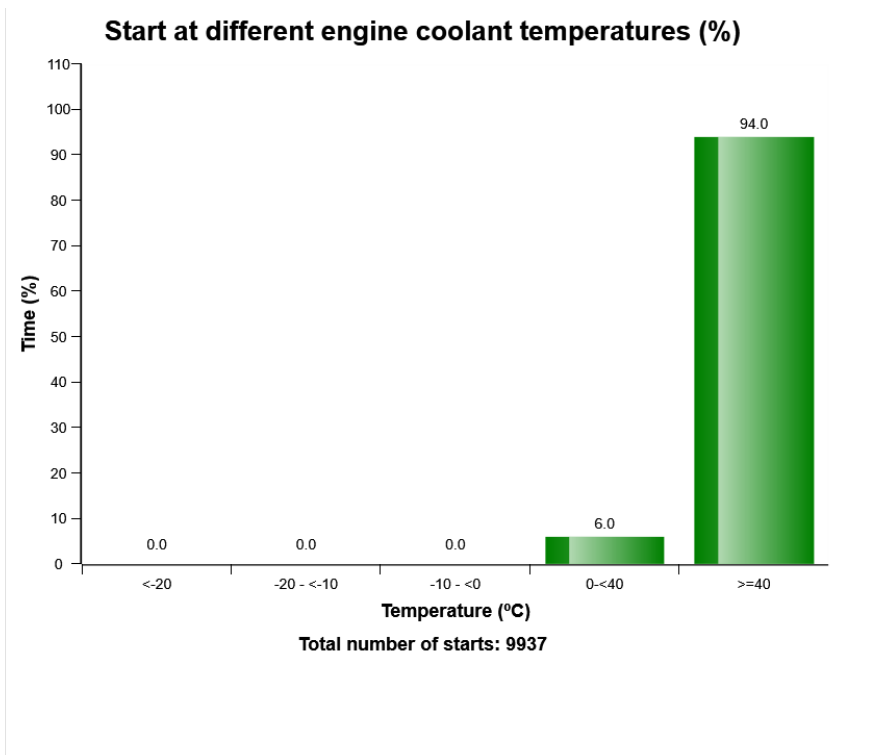
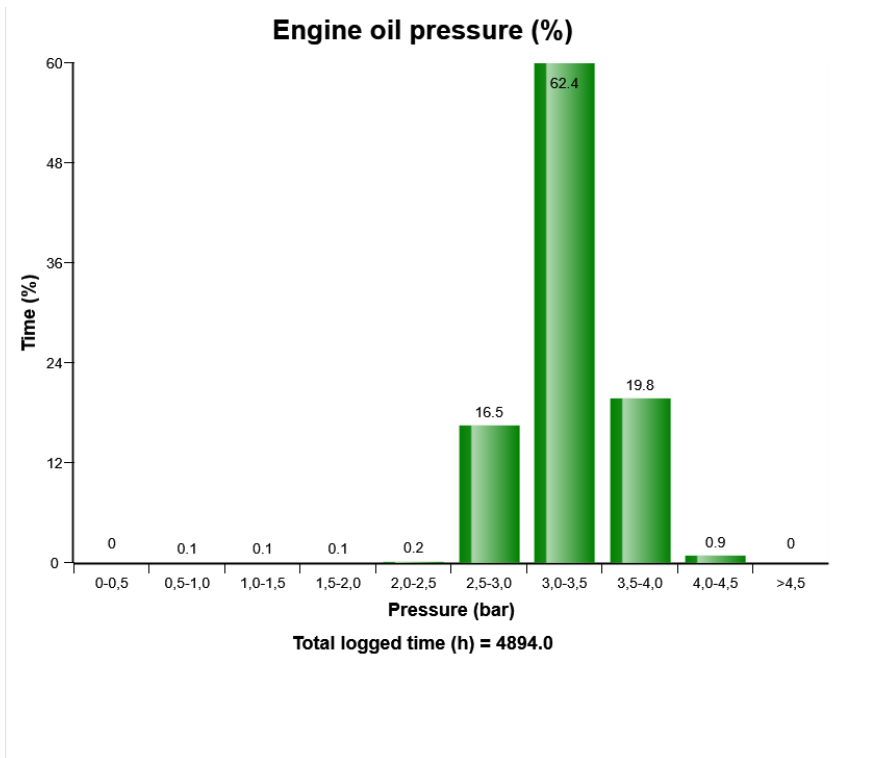
Machine model	SerialNo	Operating Hours	Reading Date
L180H	4304	4892.6	08/08/2019



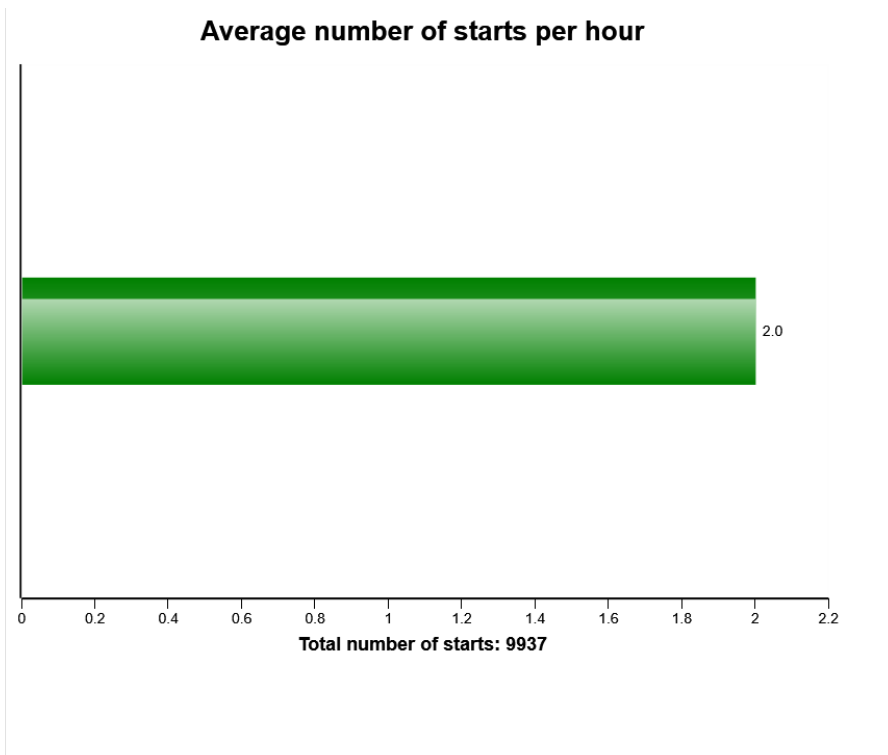
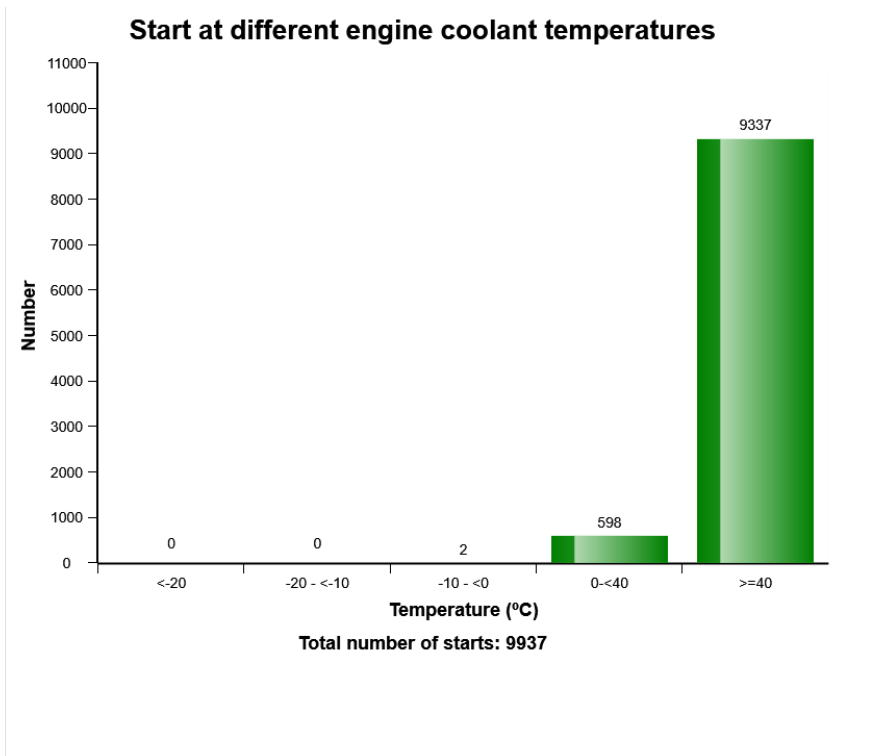
Machine model	SerialNo	Operating Hours	Reading Date
L180H	4304	4892.6	08/08/2019



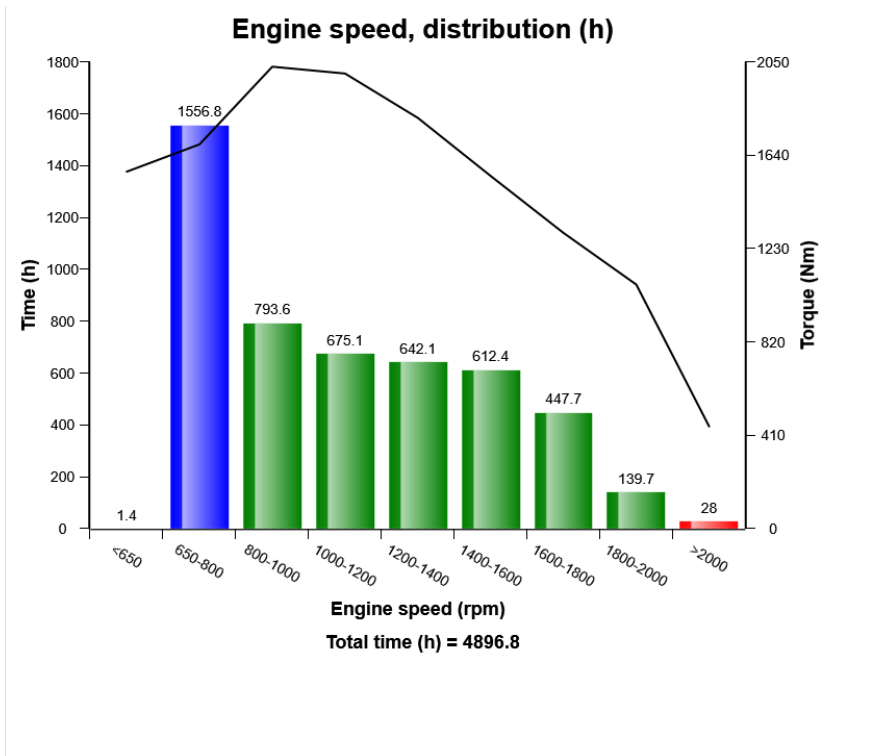
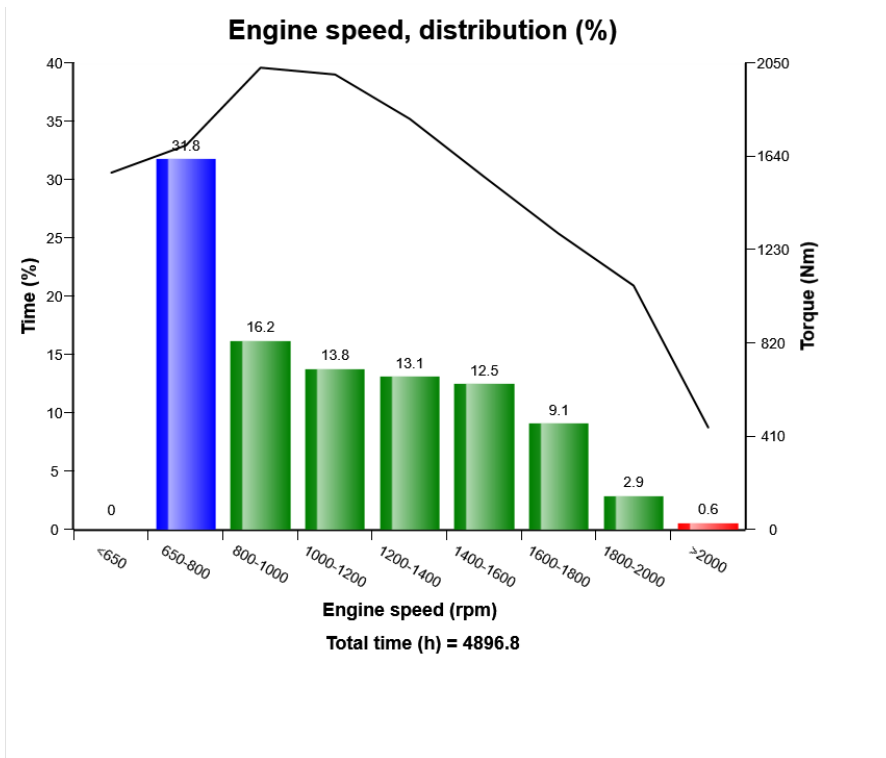
Machine model	SerialNo	Operating Hours	Reading Date
L180H	4304	4892.6	08/08/2019



Machine model	SerialNo	Operating Hours	Reading Date
L180H	4304	4892.6	08/08/2019



Machine model	SerialNo	Operating Hours	Reading Date
L180H	4304	4892.6	08/08/2019



Machine model	SerialNo	Operating Hours	Reading Date
L180H	4304	4892.6	08/08/2019

Starter overheating
Total number of occurrences = 14

Op hours	Year	Month	Day	Hour	Minute
0	2000	0	0	0	0
0	2000	0	0	0	0
0	2000	0	0	0	0
0	2000	0	0	0	0
0	2000	0	0	0	0
0	2000	0	0	0	0
1286	2017	12	20	20	6
1286	2017	12	20	20	6
1286	2017	12	20	20	6
1287	2017	12	20	23	52
1287	2017	12	20	23	52
1287	2017	12	20	23	52
1287	2017	12	20	23	53
1287	2017	12	20	23	52
1287	2017	12	20	23	51
1287	2017	12	20	23	52
1287	2017	12	20	23	53
3585	2018	11	20	5	17
3585	2018	11	20	5	20
3585	2018	11	20	5	20



Machine model	SerialNo	Operating Hours	Reading Date
L180H	4304	4892.6	08/08/2019

**Low engine oil level at start
Total number of occurrences = 1**

	Op hours	Year	Month	Day	Hour
*	0	2000	0	0	0
*	0	2000	0	0	0
*	0	2000	0	0	0
*	0	2000	0	0	0
*	0	2000	0	0	0
*	0	2000	0	0	0
*	0	2000	0	0	0
*	0	2000	0	0	0
*	0	2000	0	0	0
*	0	2000	0	0	0
*	0	2000	0	0	0
*	0	2000	0	0	0
*	0	2000	0	0	0
*	0	2000	0	0	0
*	0	2000	0	0	0
*	0	2000	0	0	0
*	0	2000	0	0	0
*	0	2000	0	0	0
*	0	2000	0	0	0
*	0	2000	0	0	0
*	0	2000	0	0	0
*	2431	2018	5	31	1



Minute

0

0

0

0

0

0

0

0

0

0

0

0

0

0

0

0

0

0

0

55



Machine model	SerialNo	Operating Hours	Reading Date
L180H	4304	4892.6	08/08/2019

Regeneration aborted
Total number of occurrences = 747

	Op hours	Year	Month	Day	Hour	Minute
*	3352	2018	10	16	6	56
*	3584	2018	11	20	3	40
*	3585	2018	11	20	6	21
*	3829	2019	1	3	6	42
*	3829	2019	1	2	19	17
*	3829	2019	1	2	17	11
*	3829	2019	1	2	18	14
*	3907	2019	1	15	9	8
*	3987	2019	1	27	12	1
*	4127	2019	2	13	16	5
*	4185	2019	2	21	8	57
*	4256	2019	3	1	14	19
*	4257	2019	3	1	15	19
*	4606	2019	4	23	11	46
*	4677	2019	5	2	15	34
*	4678	2019	5	3	4	22
*	4678	2019	5	3	4	12
*	4678	2019	5	2	16	13
*	4758	2019	5	14	10	10
*	4833	2019	5	23	13	41



Reason

1

1

1

1

1

1

1

2

1

1

1

1

1

1

1

1

1

1

1

1



Machine model	SerialNo	Operating Hours	Reading Date
L180H	4304	4892.6	08/08/2019

Regeneration ignored
Total number of occurrences = 137

	Op hours	Year	Month	Day	Hour	Minute
*	2292	2018	5	13	17	56
*	2292	2018	5	13	16	57
*	2292	2018	5	13	17	8
*	2292	2018	5	13	17	33
*	2292	2018	5	13	18	32
*	2293	2018	5	13	19	55
*	2293	2018	5	13	18	42
*	2293	2018	5	13	19	1
*	2294	2018	5	13	20	41
*	2296	2018	5	13	21	55
*	2296	2018	5	13	22	4
*	2296	2018	5	13	22	21
*	2296	2018	5	13	22	34
*	2297	2018	5	13	23	21
*	2297	2018	5	13	23	48
*	2297	2018	5	13	23	53
*	2298	2018	5	14	0	20
*	2298	2018	5	14	0	38
*	2298	2018	5	14	1	3
*	2298	2018	5	14	1	8



**Duration
(min)**

29
8
12
7
7
1
5
49
5
5
0
5
42
24
1
25
10
13
1
29



Machine model	SerialNo	Operating Hours	Reading Date
L180H	4304	4892.6	08/08/2019

Regeneration duration
Total number of occurrences = 1055

	Op hours	Year	Month	Day	Hour	Minute
*	4126	2019	2	13	15	42
*	4127	2019	2	13	16	31
*	4185	2019	2	21	8	31
*	4185	2019	2	21	9	15
*	4256	2019	3	1	14	40
*	4256	2019	3	1	14	17
*	4257	2019	3	3	7	17
*	4331	2019	3	10	13	21
*	4401	2019	3	21	6	56
*	4469	2019	3	31	16	39
*	4531	2019	4	9	7	55
*	4606	2019	4	23	11	43
*	4606	2019	4	23	12	52
*	4676	2019	5	2	14	49
*	4678	2019	5	3	4	0
*	4678	2019	5	2	16	8
*	4758	2019	5	14	9	56
*	4758	2019	5	14	10	32
*	4833	2019	5	23	13	26
*	4834	2019	5	23	14	17



Duration (min)
22
37
26
29
39
3
37
51
45
60
66
3
48
45
54
5
15
68
16
53



Machine model	SerialNo	Operating Hours	Reading Date
L180H	4304	4892.6	08/08/2019

Water level warning in water separator
Total number of occurrences = 34

	Op hours	Year	Month	Day	Hour	Minute
*	2862	2018	8	8	7	50
*	2862	2018	8	8	7	32
*	2863	2018	8	8	11	35
*	2863	2018	8	8	9	42
*	2863	2018	8	8	9	24
*	2863	2018	8	8	10	37
*	2863	2018	8	8	10	56
*	2863	2018	8	8	15	11
*	2863	2018	8	8	14	29
*	2863	2018	8	8	11	50
*	2864	2018	8	8	16	22
*	2864	2018	8	8	15	38
*	2864	2018	8	8	17	22
*	2865	2018	8	8	18	10
*	2865	2018	8	8	18	21
*	2866	2018	8	8	19	9
*	2866	2018	8	8	19	16
*	2866	2018	8	8	19	30
*	2866	2018	8	8	19	37
*	2866	2018	8	8	18	47



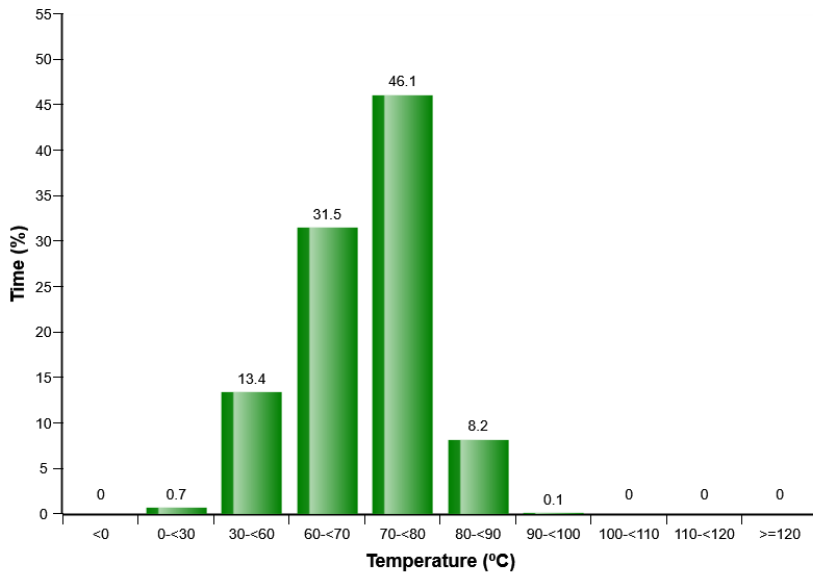
**Duration
(min)**

13
0
9
1
8
7
1
23
22
7
30
6
37
1
23
4
6
2
1
0

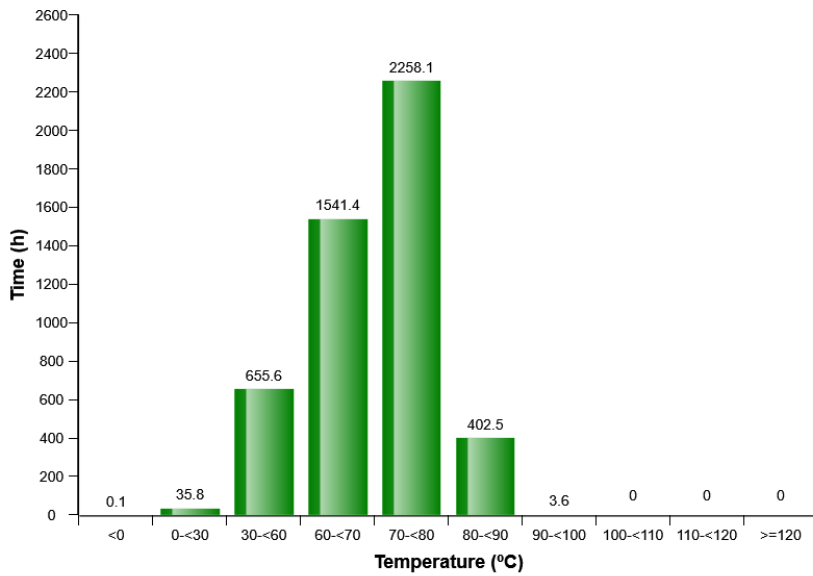


Machine model	SerialNo	Operating Hours	Reading Date
L180H	4304	4892.6	08/08/2019

Transmission oil, temperature distribution (%)

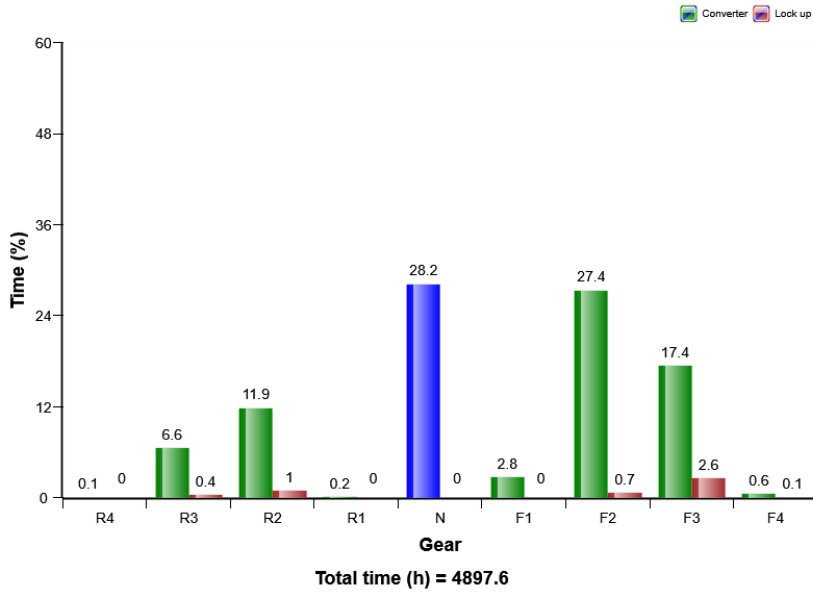


Transmission oil, temperature distribution (h)

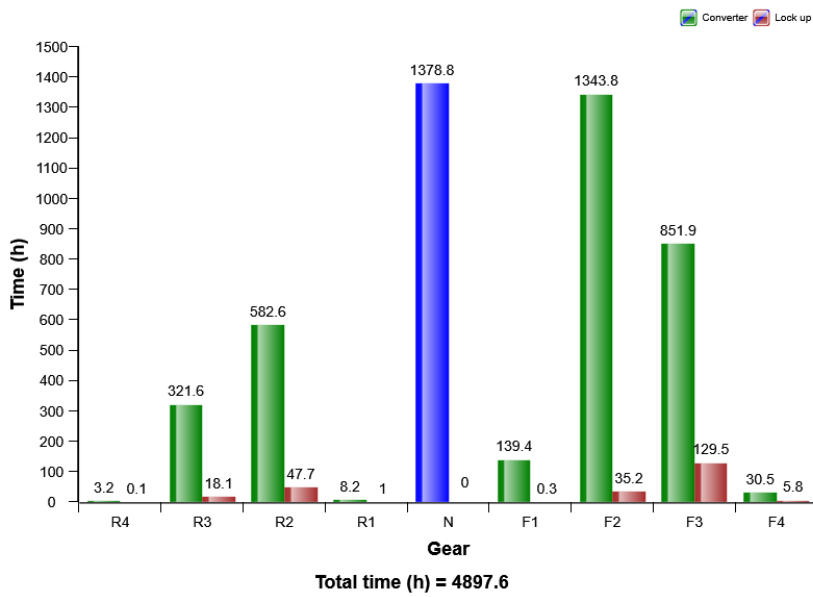


Machine model	SerialNo	Operating Hours	Reading Date
L180H	4304	4892.6	08/08/2019

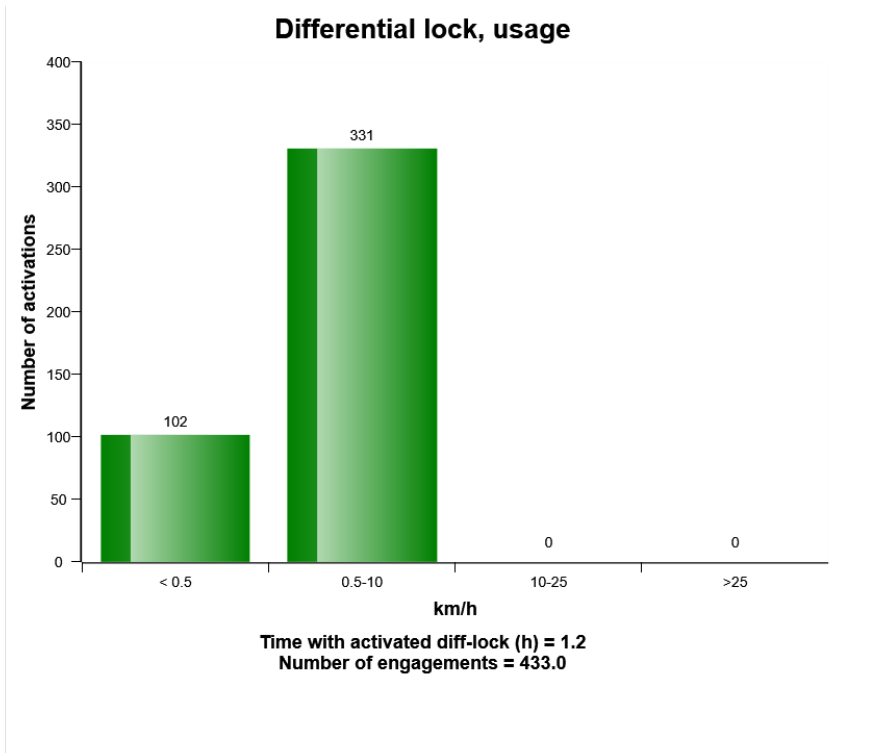
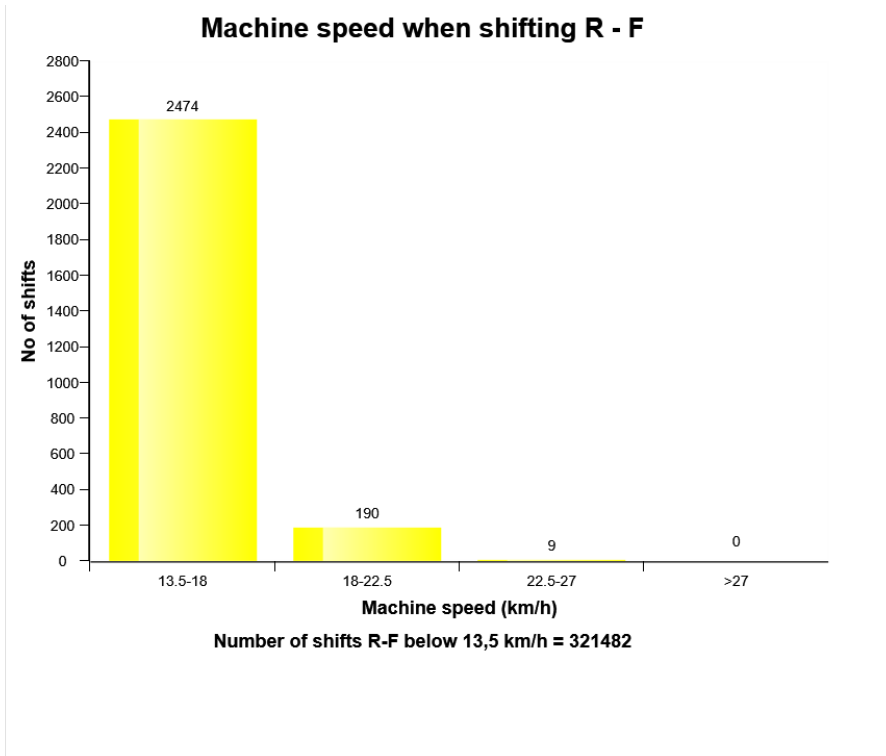
Gears, time distribution (%)



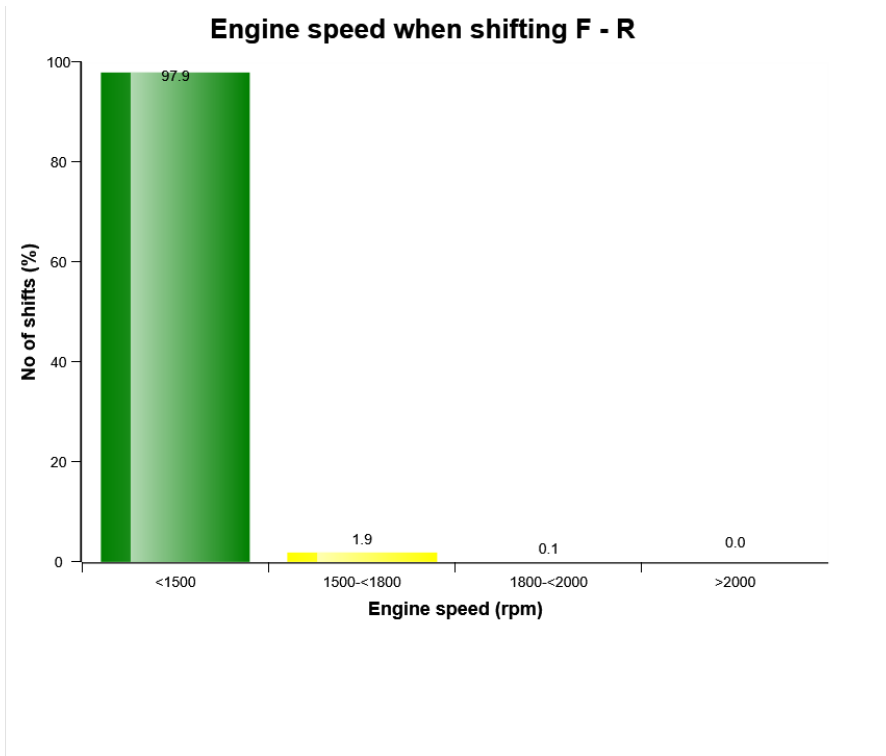
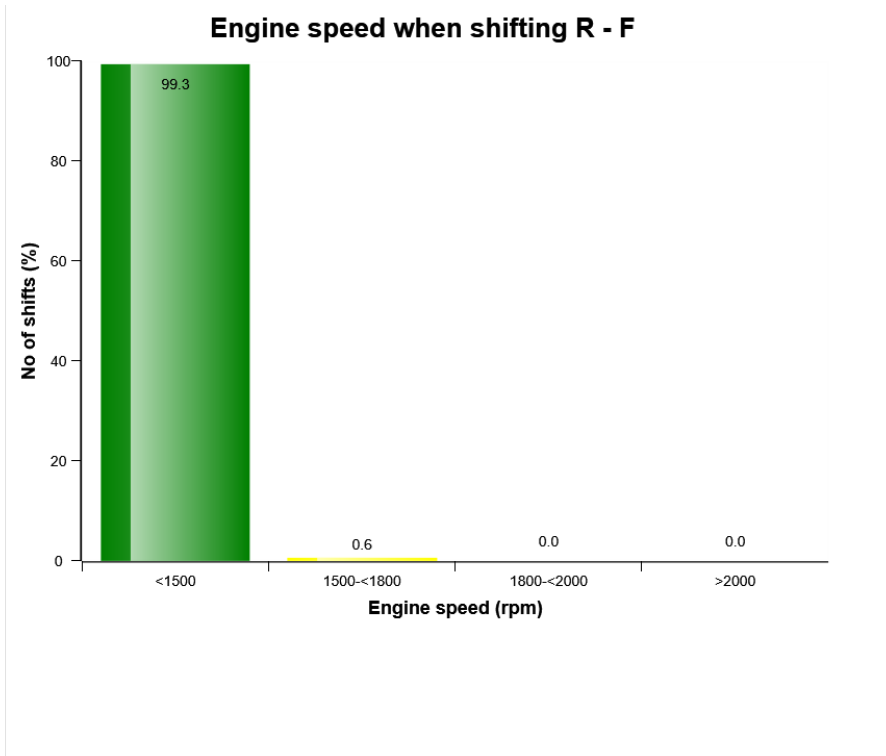
Gears, time distribution (h)



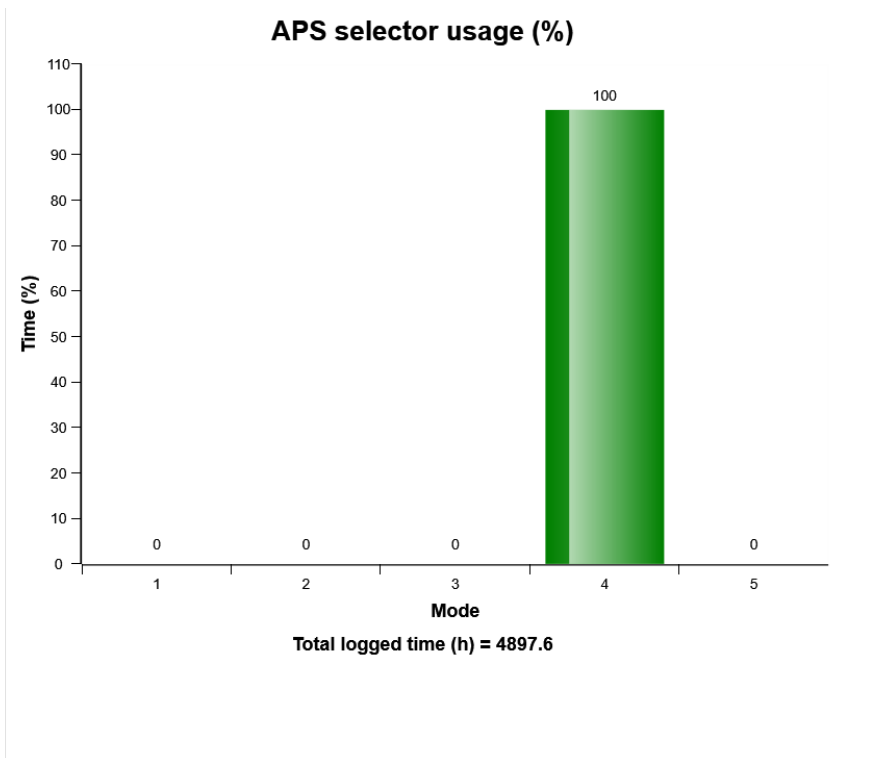
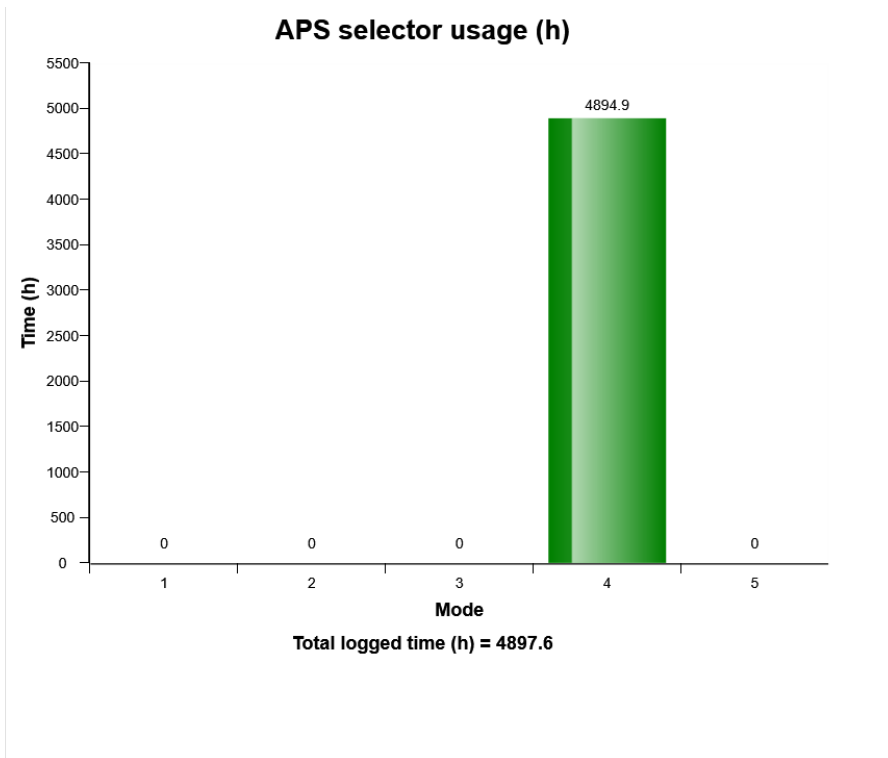
Machine model	SerialNo	Operating Hours	Reading Date
L180H	4304	4892.6	08/08/2019



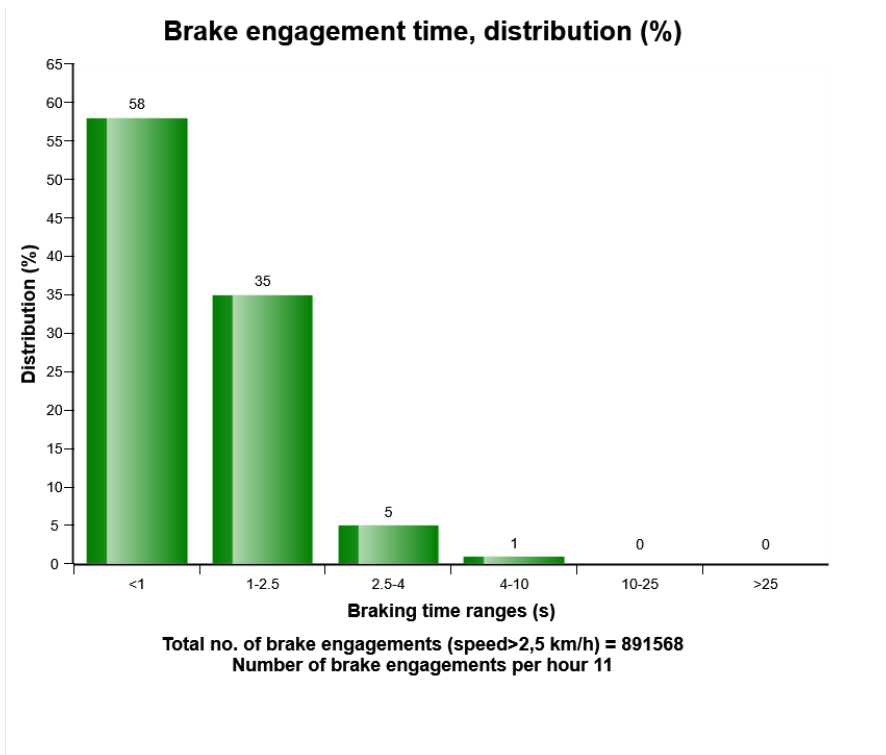
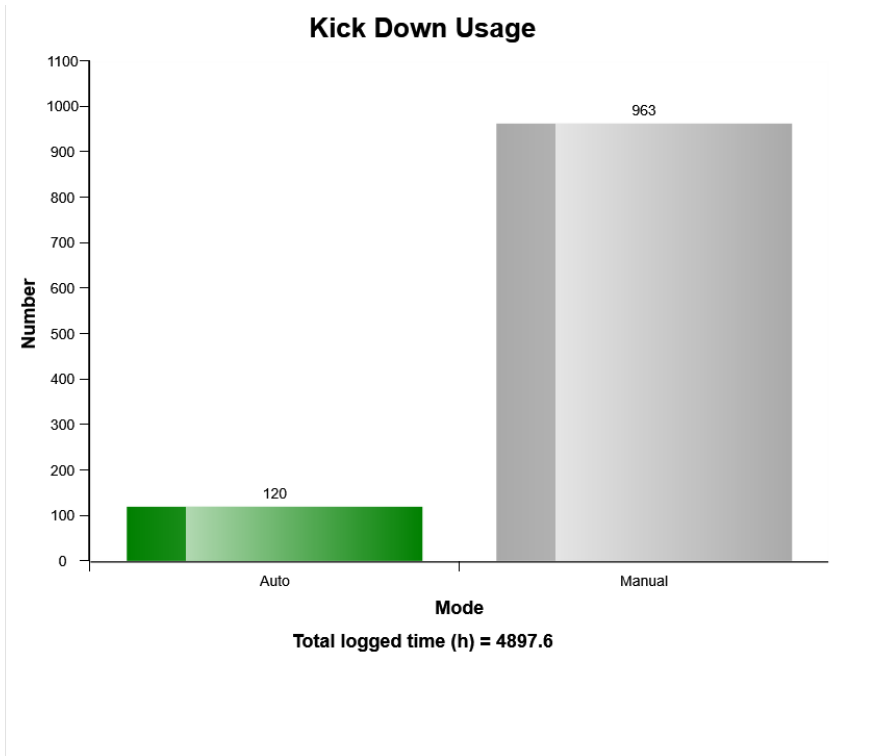
Machine model	SerialNo	Operating Hours	Reading Date
L180H	4304	4892.6	08/08/2019



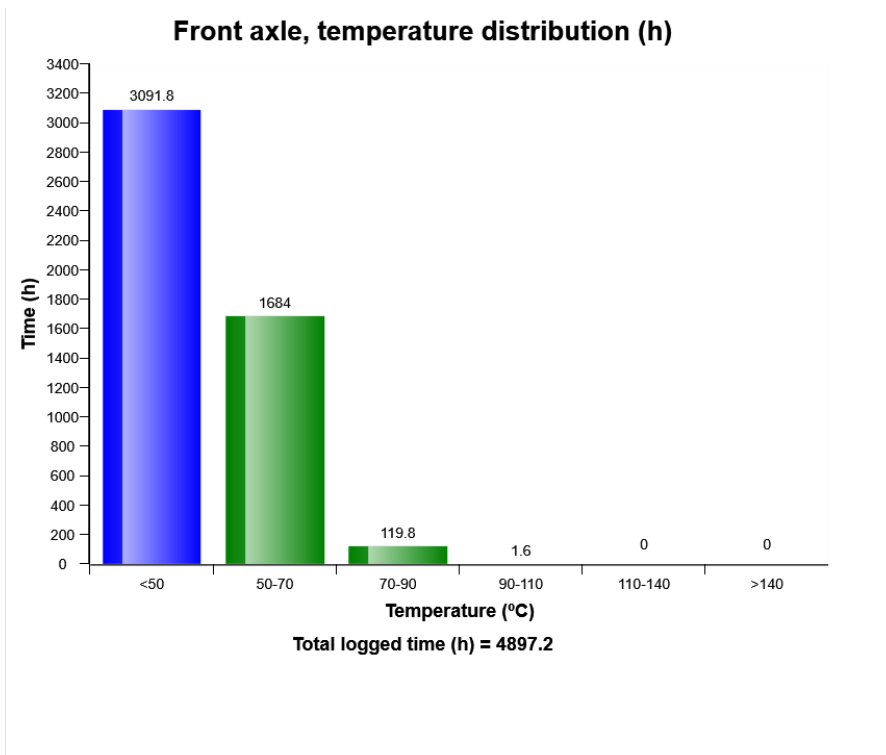
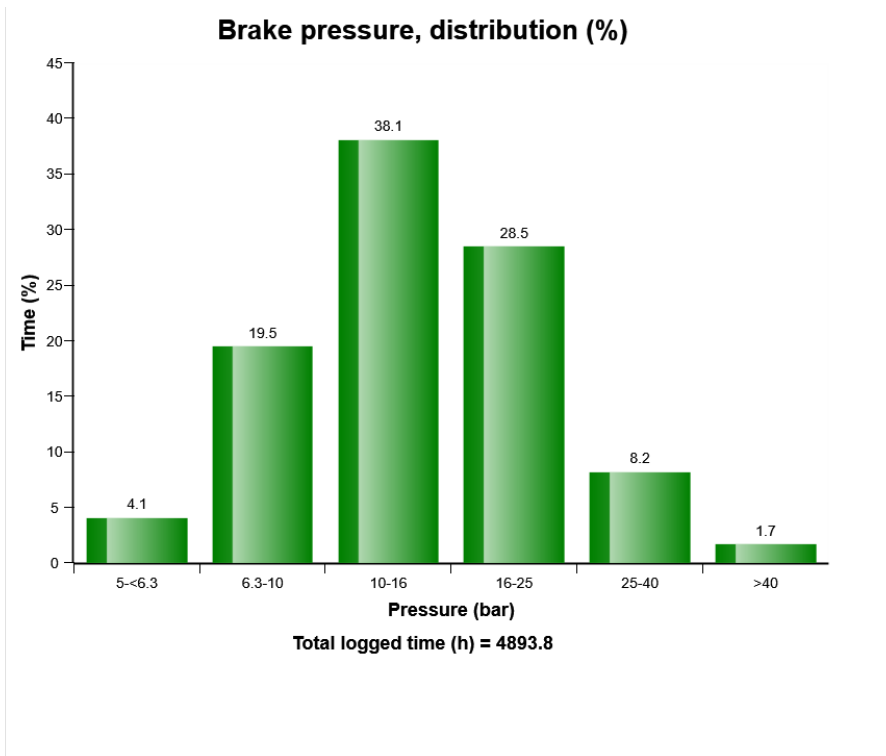
Machine model	SerialNo	Operating Hours	Reading Date
L180H	4304	4892.6	08/08/2019



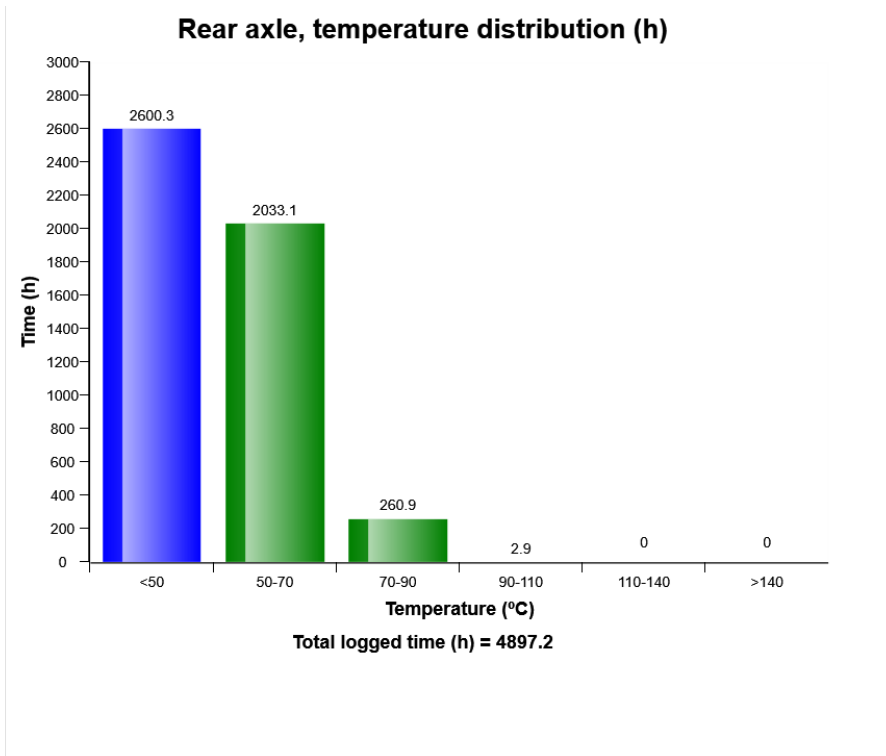
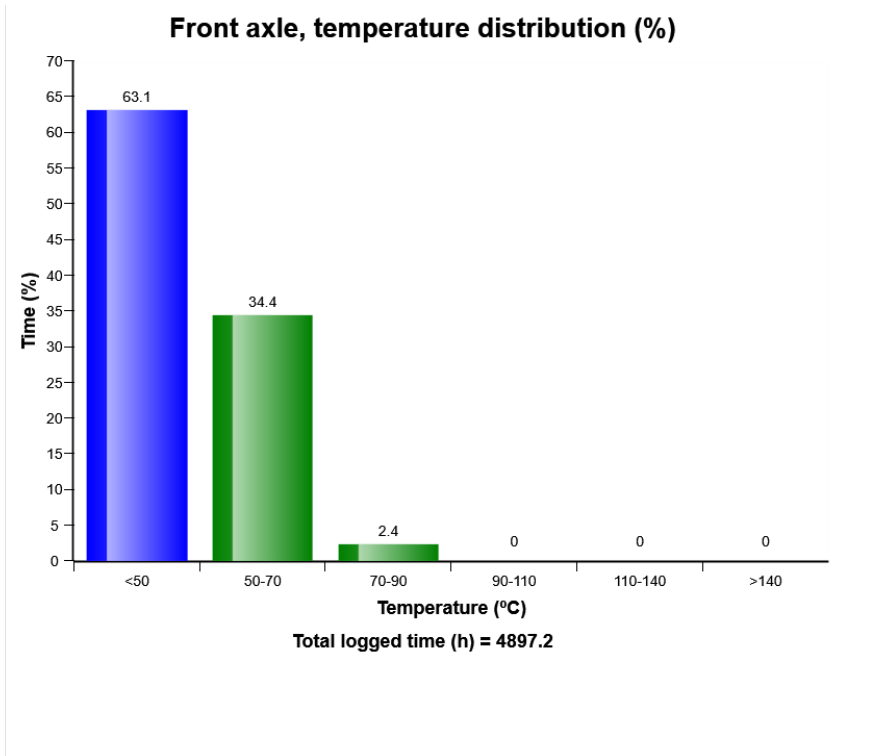
Machine model	SerialNo	Operating Hours	Reading Date
L180H	4304	4892.6	08/08/2019



Machine model	SerialNo	Operating Hours	Reading Date
L180H	4304	4892.6	08/08/2019



Machine model	SerialNo	Operating Hours	Reading Date
L180H	4304	4892.6	08/08/2019



Machine model	SerialNo	Operating Hours	Reading Date
L180H	4304	4892.6	08/08/2019

Parking brake usage
Total number of occurrences = 10434

Op hours	Year	Month	Day	Hour	Minute	Duration (minutes)
0	2019	7	22	9	6	0
0	2019	6	18	8	51	1
0	2019	6	13	16	26	1
0	2019	6	13	16	20	4
0	2019	6	13	16	16	0
0	2019	8	5	9	31	0
0	2019	8	5	9	30	0
0	2019	7	23	10	42	0
0	2019	7	23	10	38	2
0	2019	7	23	10	22	5
0	2019	7	22	17	27	4
0	2019	7	22	17	14	4
0	2019	7	22	16	51	17
0	2019	7	22	16	48	0
0	2019	7	22	9	44	0
0	2019	7	22	9	41	0
0	2019	7	22	9	24	0
0	2019	7	22	9	16	0
0	2019	6	18	9	41	1
0	2019	7	22	8	55	2



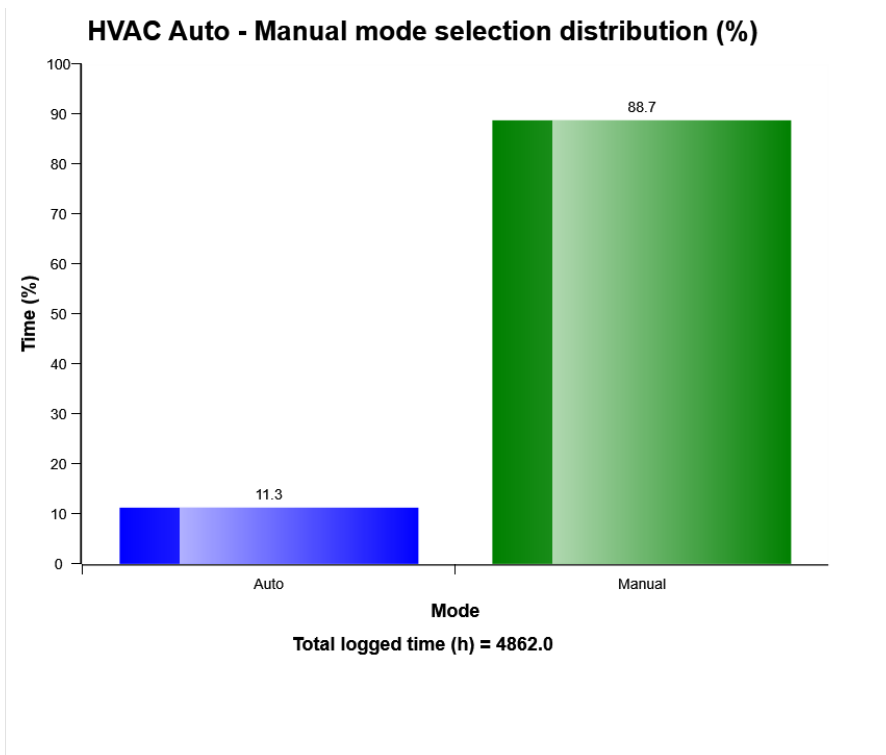
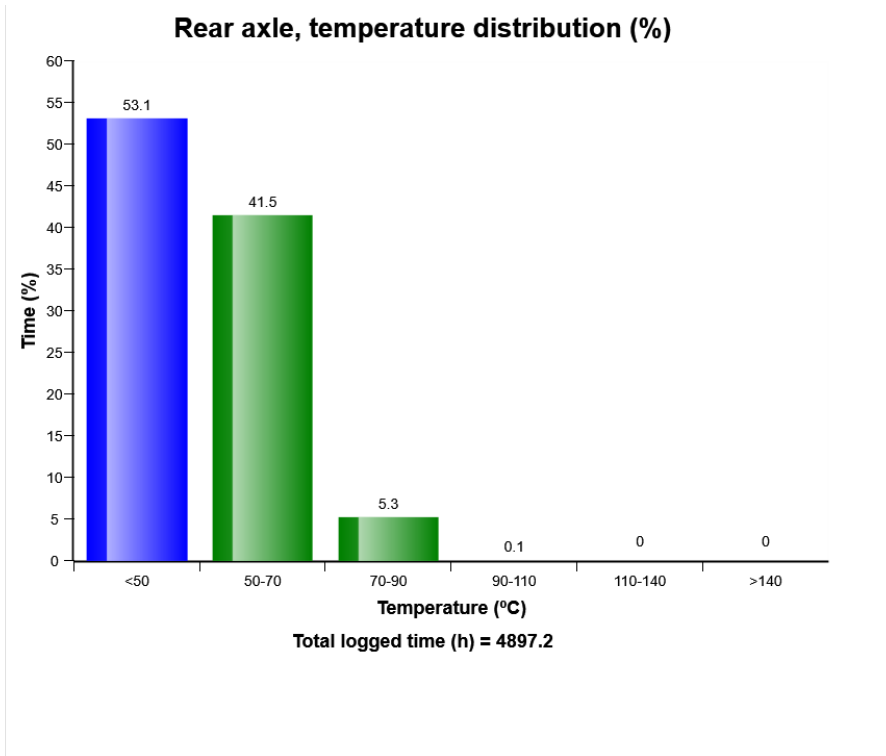
Machine model	SerialNo	Operating Hours	Reading Date
L180H	4304	4892.6	08/08/2019

Parking brake abuse
Total number of occurrences = 18

Op hours	Year	Month	Day	Hour	Minute	Duration (seconds)	Extreme (km/h)
0	2018	8	31	21	21	0	4
0	2019	5	22	9	13	0	3
0	2019	5	15	16	35	0	4
0	2019	5	14	14	27	0	7
0	2019	5	9	9	46	0	3
0	2019	4	14	7	48	0	6
0	2019	3	20	17	10	0	4
0	2019	3	20	14	38	0	4
0	2019	3	20	14	22	0	3
0	2019	3	19	8	53	0	3
0	2019	3	15	9	36	0	3
0	2019	3	15	8	29	0	5
0	2019	3	14	7	9	0	4
0	2019	3	6	20	22	0	3
0	2019	3	4	14	21	0	4
0	2019	3	4	12	52	0	3
0	2019	2	24	10	15	0	4
0	2018	10	4	6	4	0	4
0	2000	0	0	0	0	0	0
0	2000	0	0	0	0	0	0

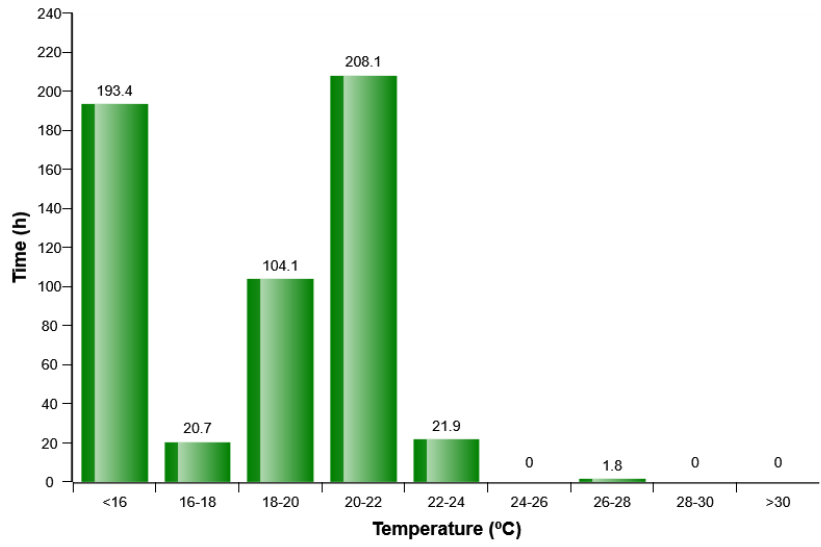


Machine model	SerialNo	Operating Hours	Reading Date
L180H	4304	4892.6	08/08/2019

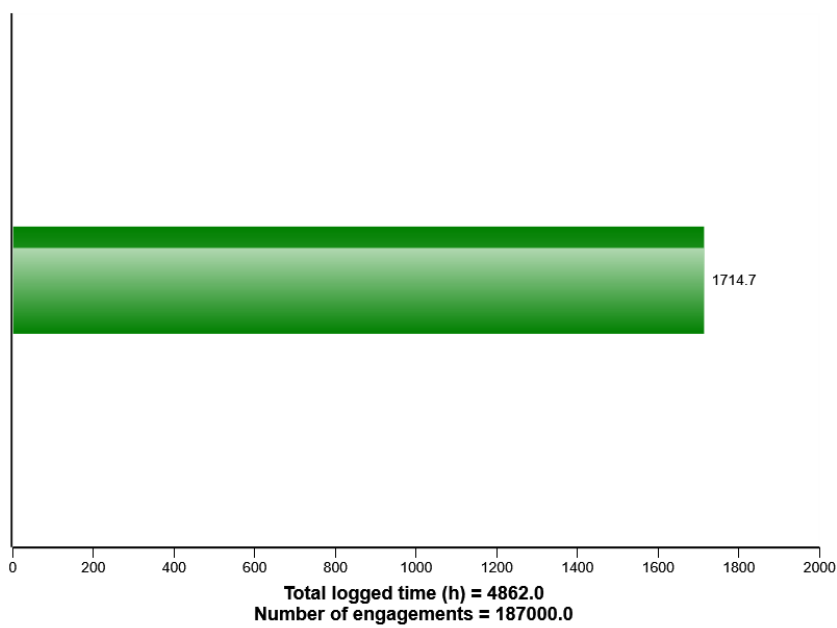


Machine model	SerialNo	Operating Hours	Reading Date
L180H	4304	4892.6	08/08/2019

HVAC air temperature setting in auto control mode distribution (h)

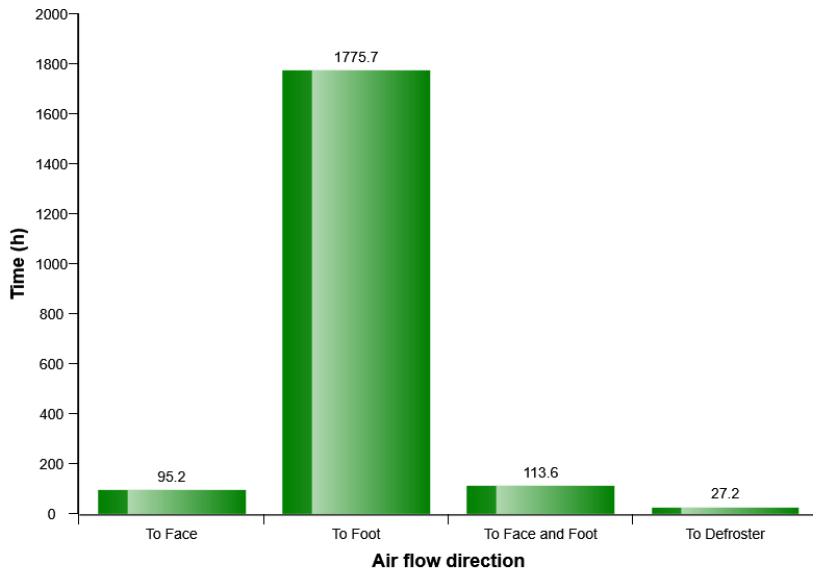


AC Compressor usage

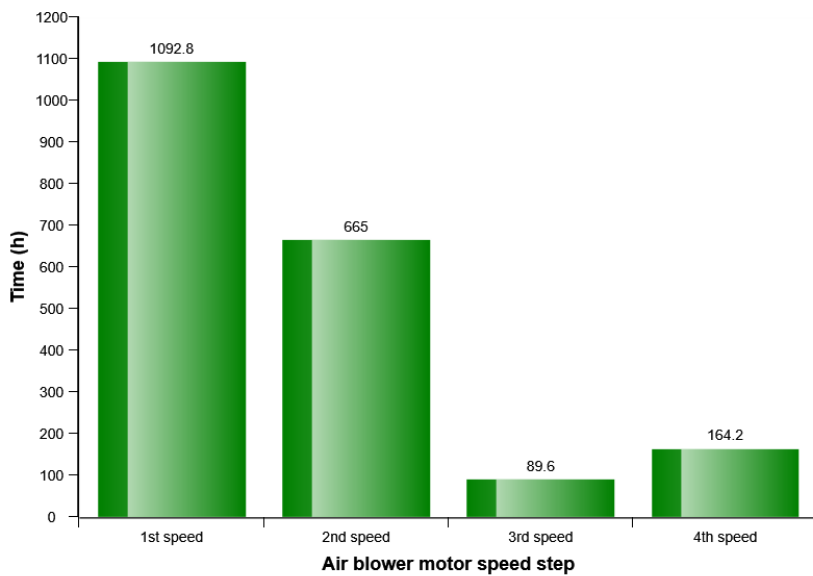


Machine model	SerialNo	Operating Hours	Reading Date
L180H	4304	4892.6	08/08/2019

HVAC air flow direction in manual mode distribution (h)



HVAC air blower motor speed in manual mode distribution (h)



Machine model	SerialNo	Operating Hours	Reading Date
L180H	4304	4892.6	08/08/2019

