

VOLVO CONSTRUCTION EQUIPMENT MATRIS REPORT

Machine model A40G	SerialNo 341571	Operating Hours 3979	Reading Date 11/09/2019
Company name Romco	Dealer	Report Issuer	
Contact name	Technician Brandon Hallowell	Primary Application Earth moving construction	
Site	Workorder	Ground Condition	

MATRIS Reading, Summary / Recommendation

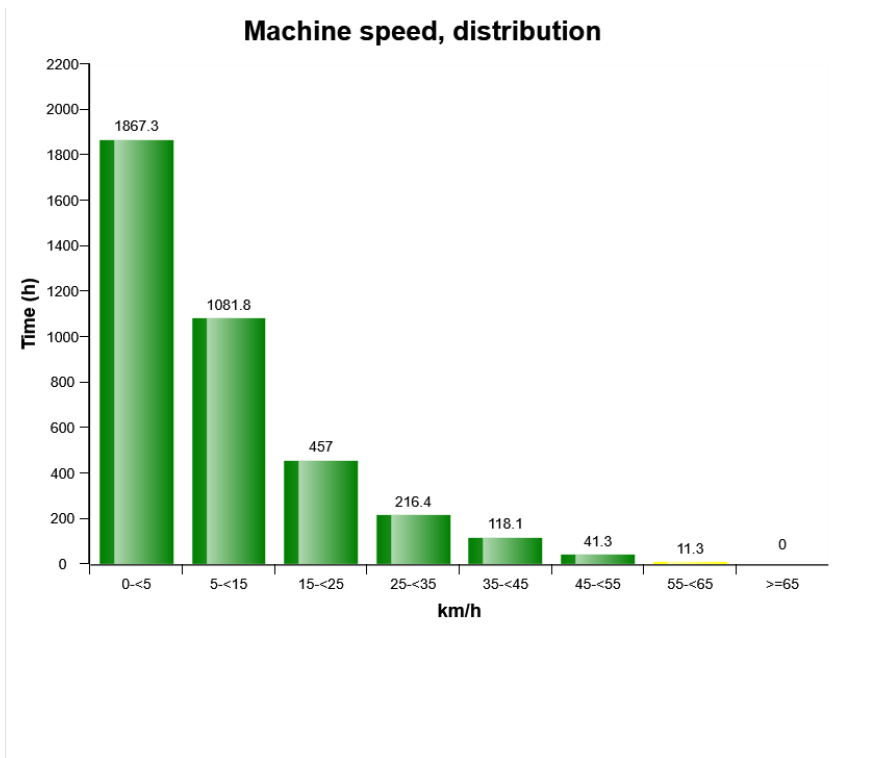
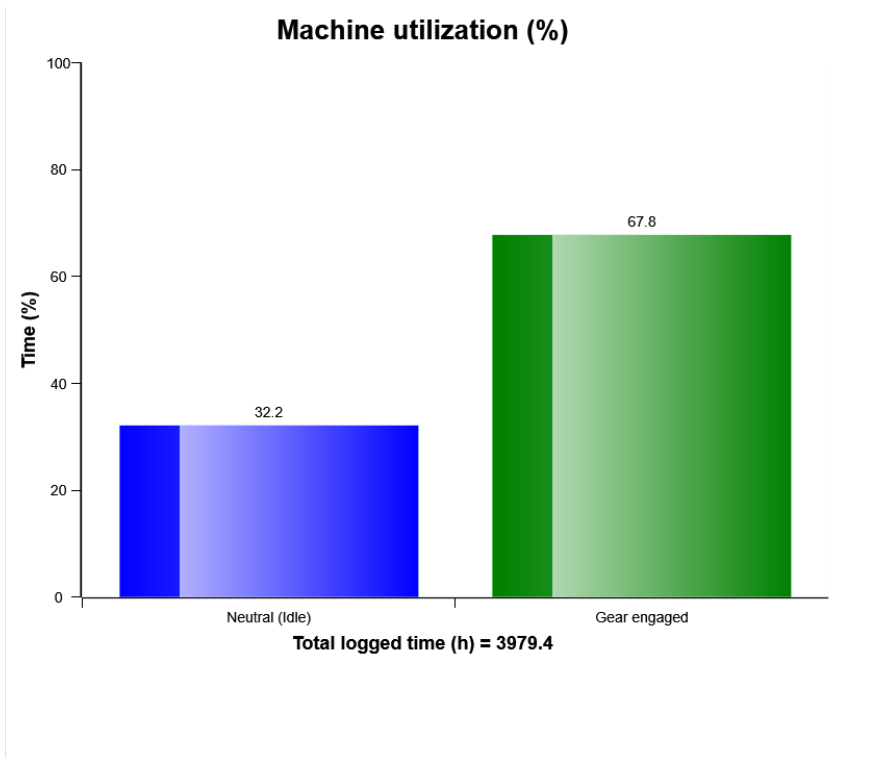


Machine model	SerialNo	Operating Hours	Reading Date
A40G	341571	3979	11/09/2019

Main equipment	Type	Equipment
	Tyre size/class	Sold without tyres
	Body extensions	Not mounted
	Tail-gate	Not mounted
	Extra spillguard	Not mounted
	Wear plates	Not mounted
	Pattern	None

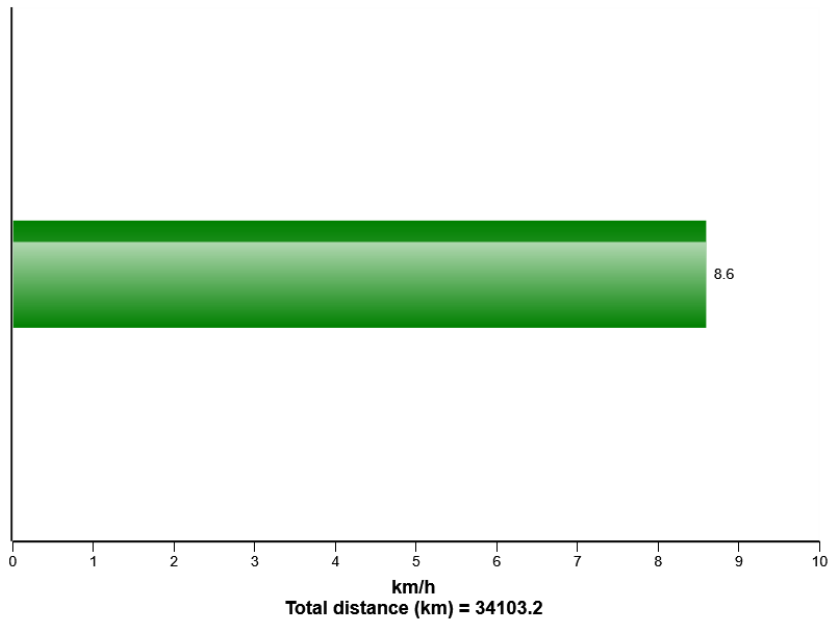


Machine model	SerialNo	Operating Hours	Reading Date
A40G	341571	3979	11/09/2019

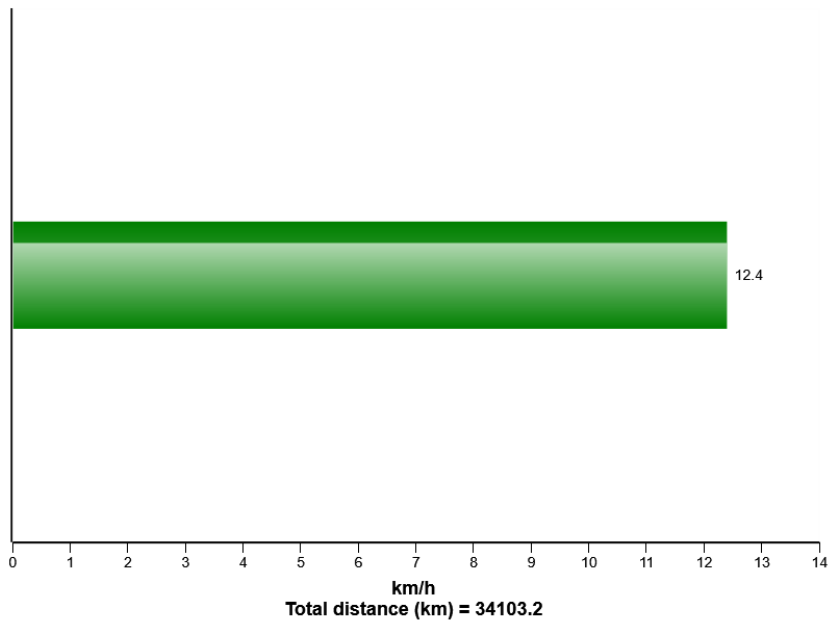


Machine model	SerialNo	Operating Hours	Reading Date
A40G	341571	3979	11/09/2019

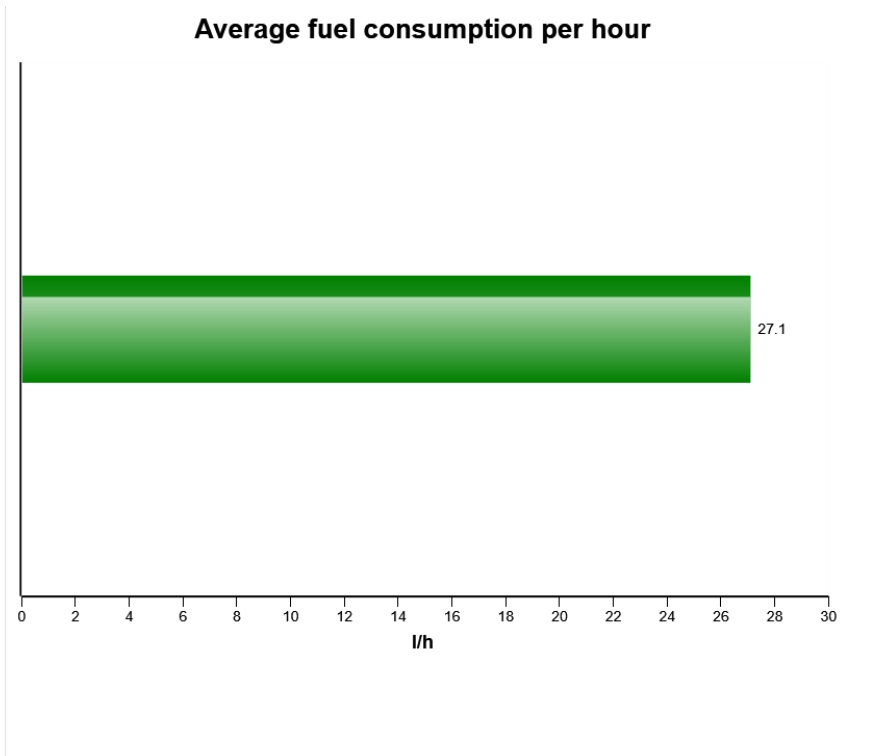
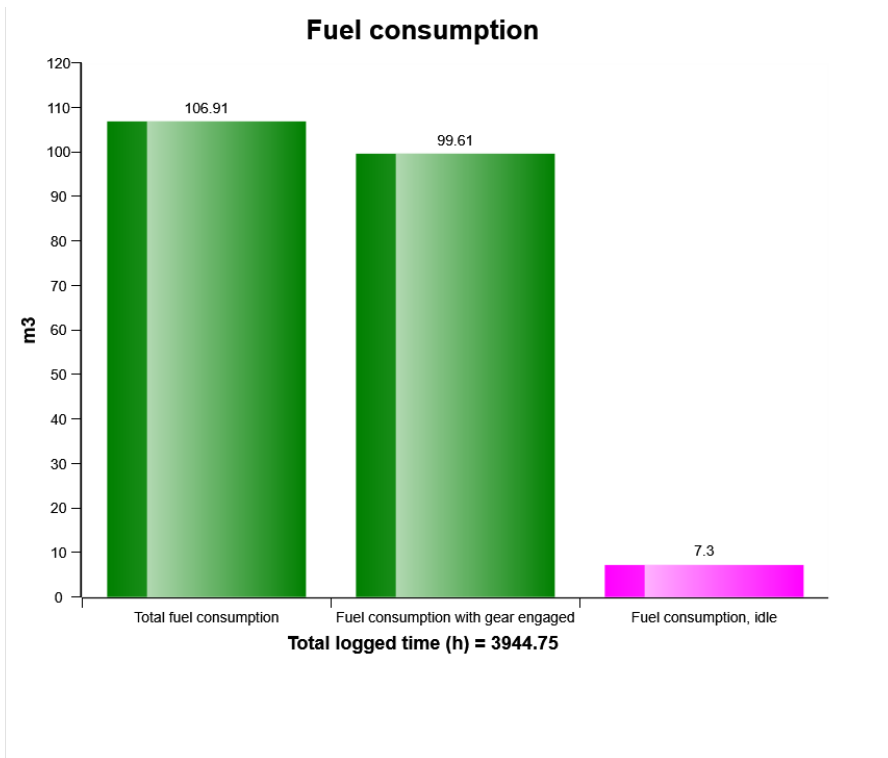
Average speed over total operating hours



Average speed with gear engaged

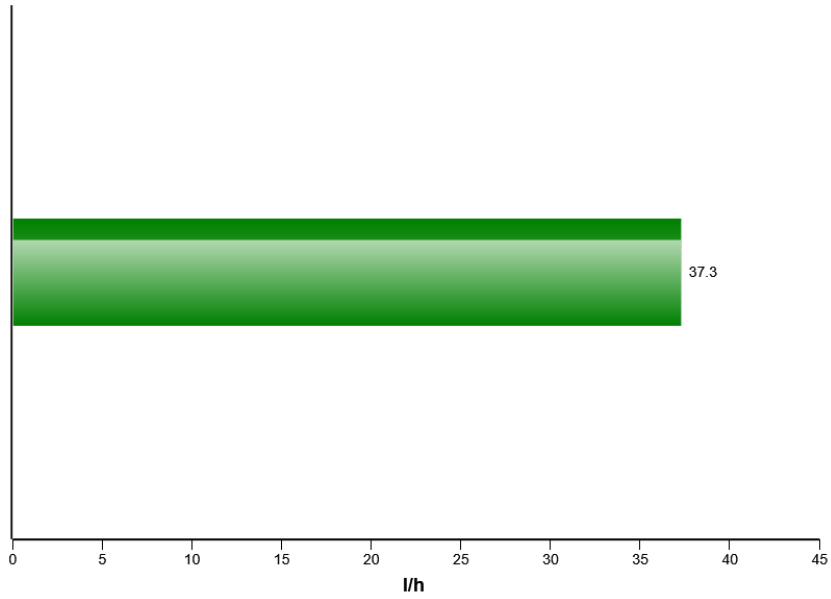


Machine model	SerialNo	Operating Hours	Reading Date
A40G	341571	3979	11/09/2019

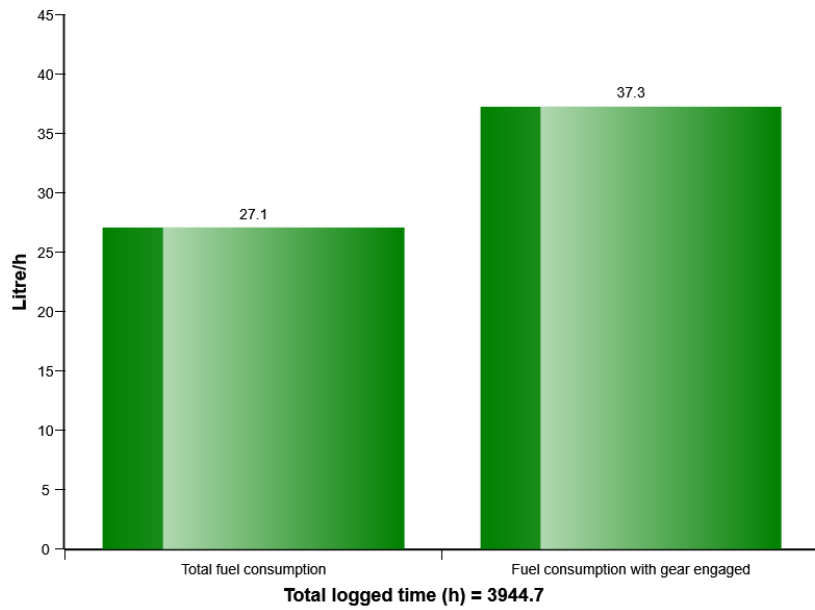


Machine model	SerialNo	Operating Hours	Reading Date
A40G	341571	3979	11/09/2019

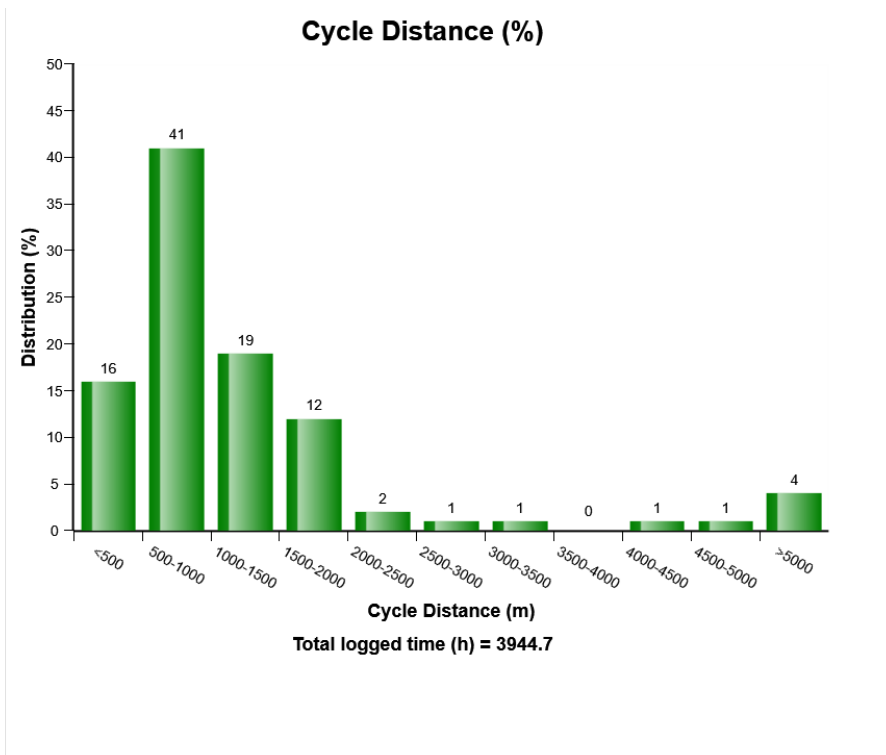
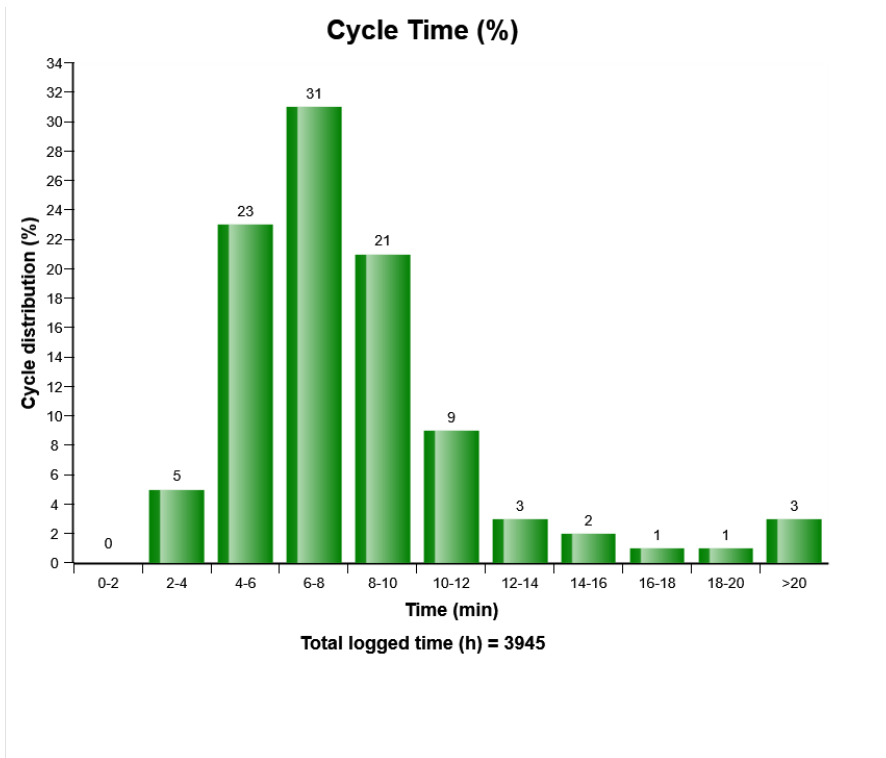
Average fuel consumption per hour with gear engaged



Average fuel consumption



Machine model	SerialNo	Operating Hours	Reading Date
A40G	341571	3979	11/09/2019



Machine model	SerialNo	Operating Hours	Reading Date
A40G	341571	3979	11/09/2019

Accumulated performance
Total logged time (h) =

Total logged time (h) =
Total fuel consumption
Production (tonne)
Tonne/h
Tonne/litre
Litre/tonne
Number of cycles
Cycles overloaded (%)
Load utilisation / cycle (%)



1623.1

43435.7

271596.3

167.3

6.3

0.2

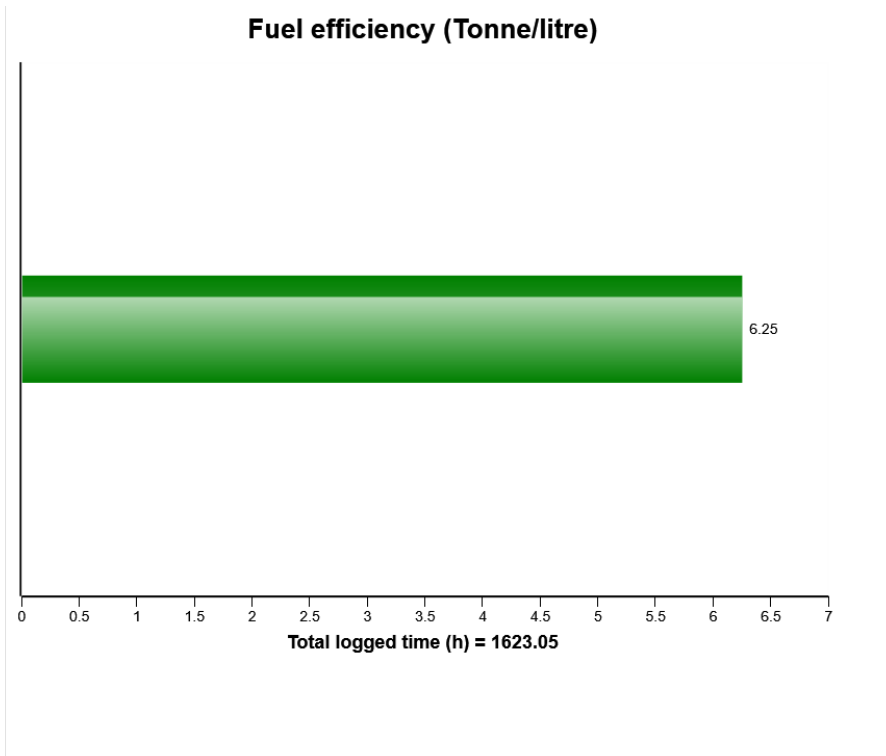
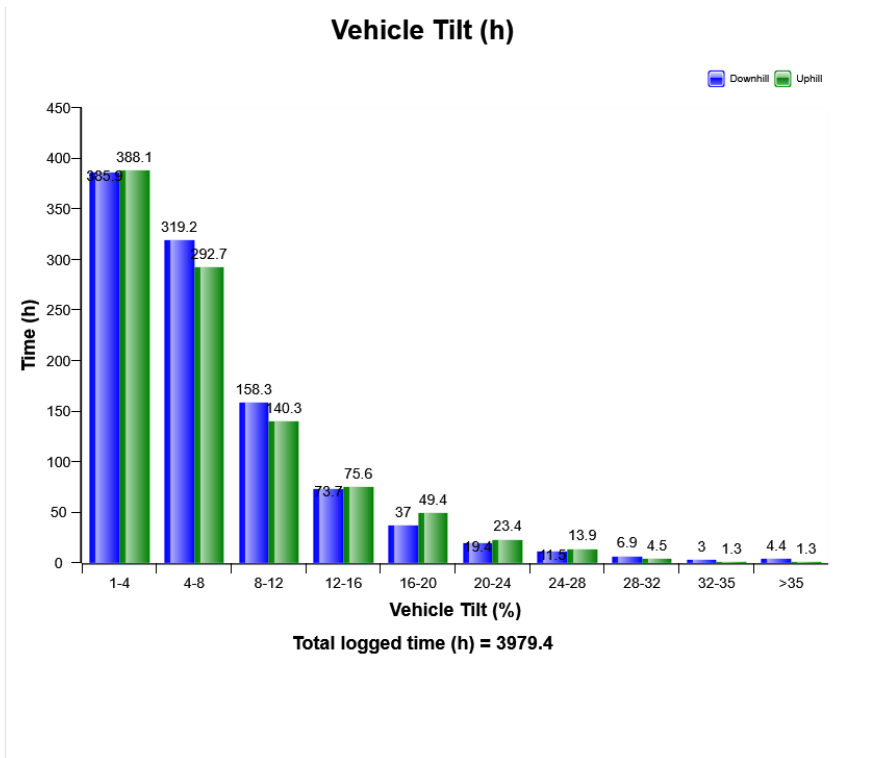
9885

0.2

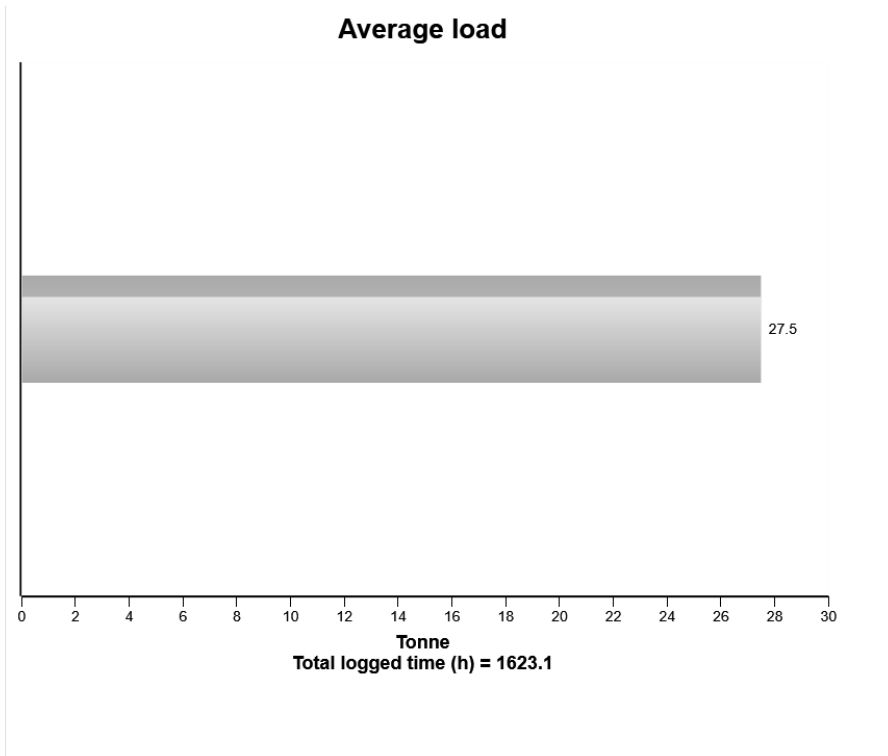
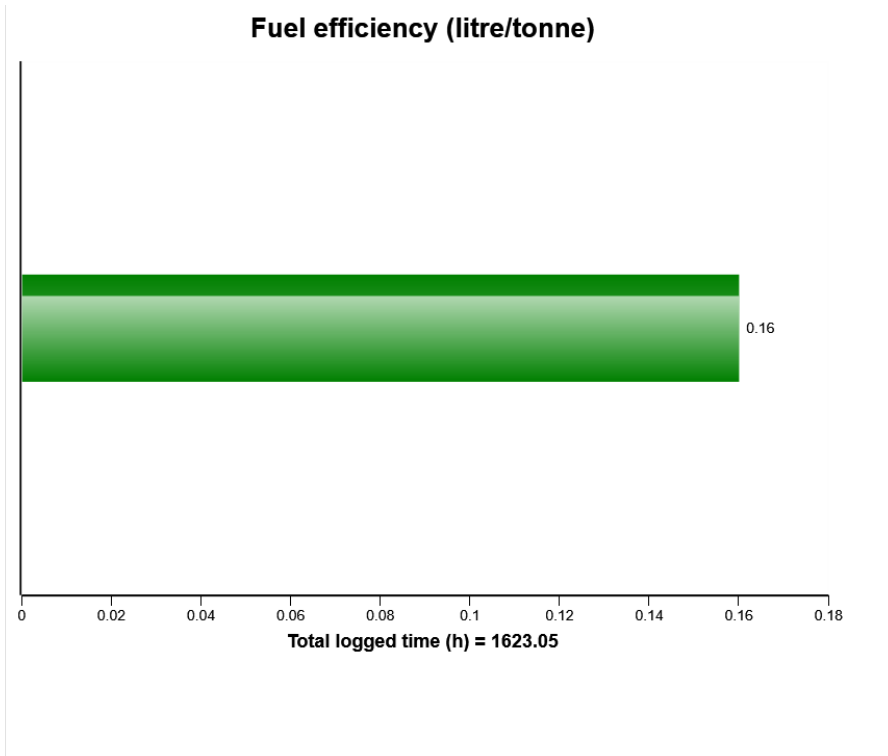
70.5



Machine model	SerialNo	Operating Hours	Reading Date
A40G	341571	3979	11/09/2019

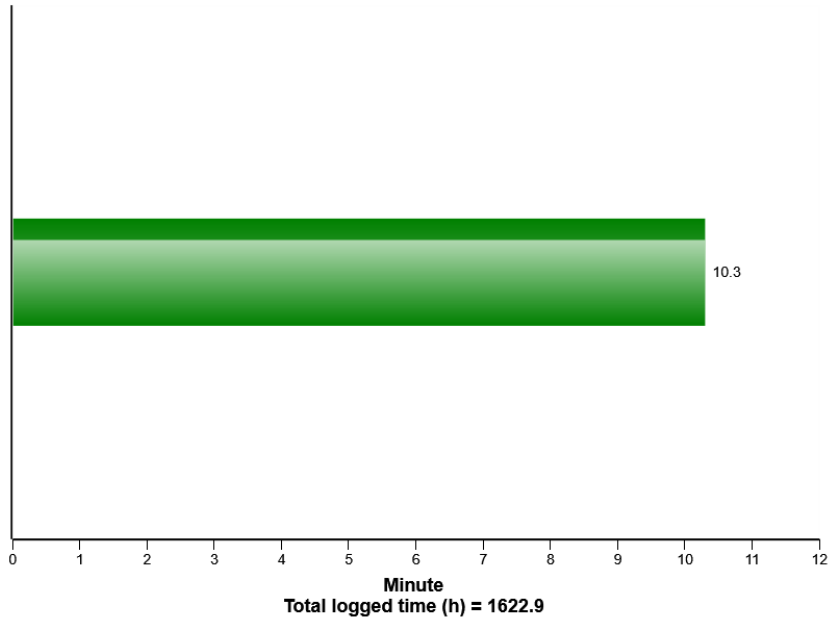


Machine model	SerialNo	Operating Hours	Reading Date
A40G	341571	3979	11/09/2019

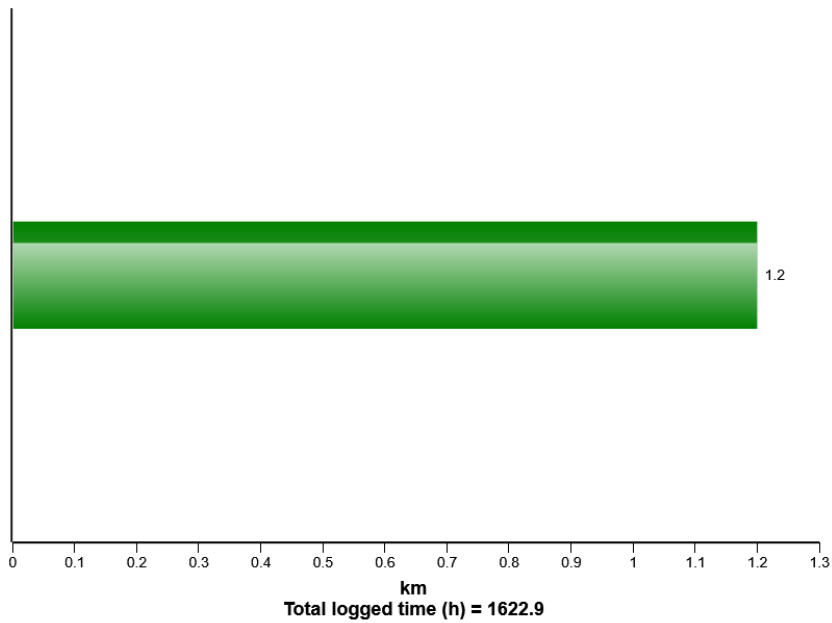


Machine model	SerialNo	Operating Hours	Reading Date
A40G	341571	3979	11/09/2019

Average cycle time

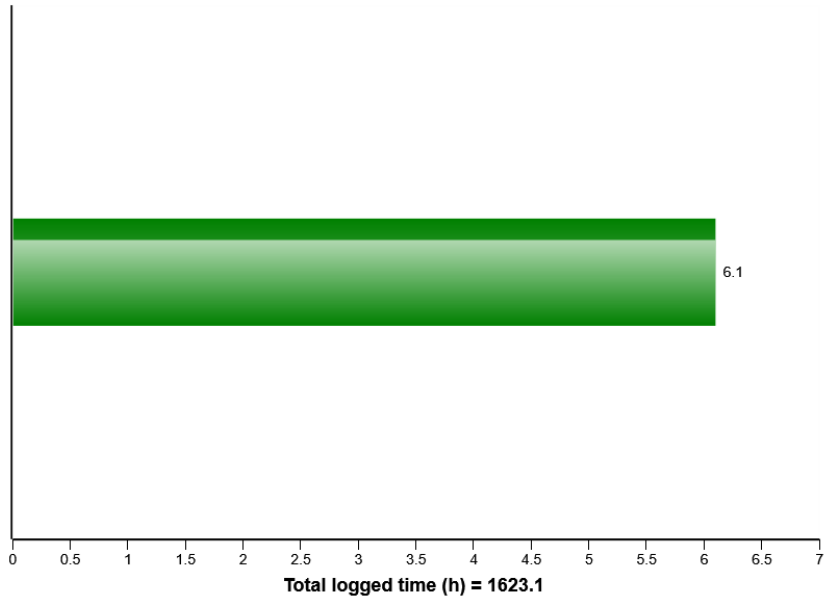


Average cycle distance

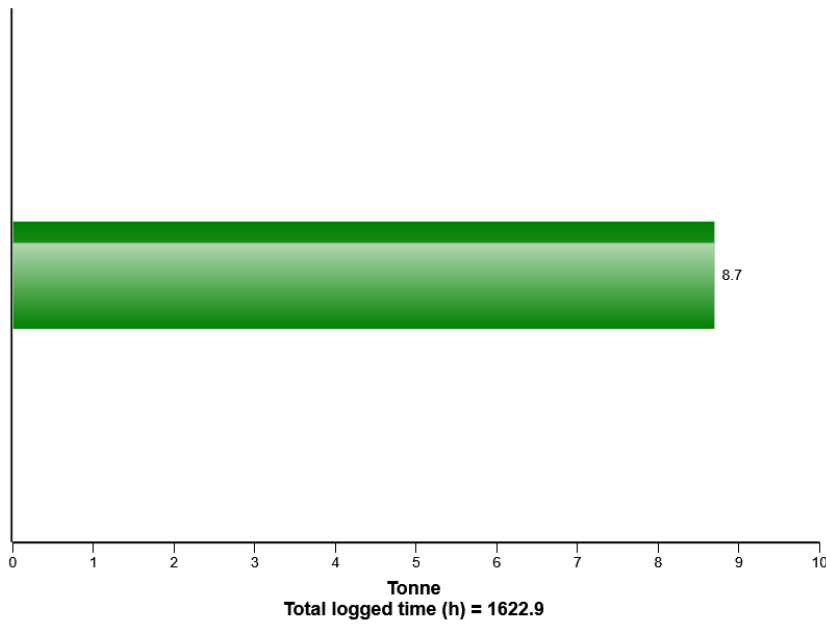


Machine model	SerialNo	Operating Hours	Reading Date
A40G	341571	3979	11/09/2019

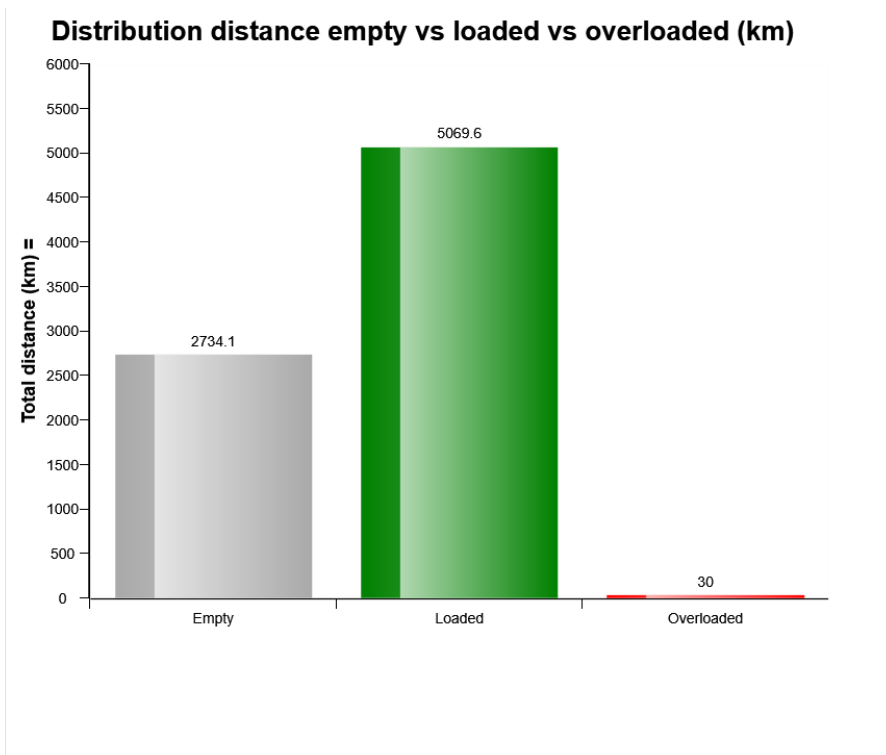
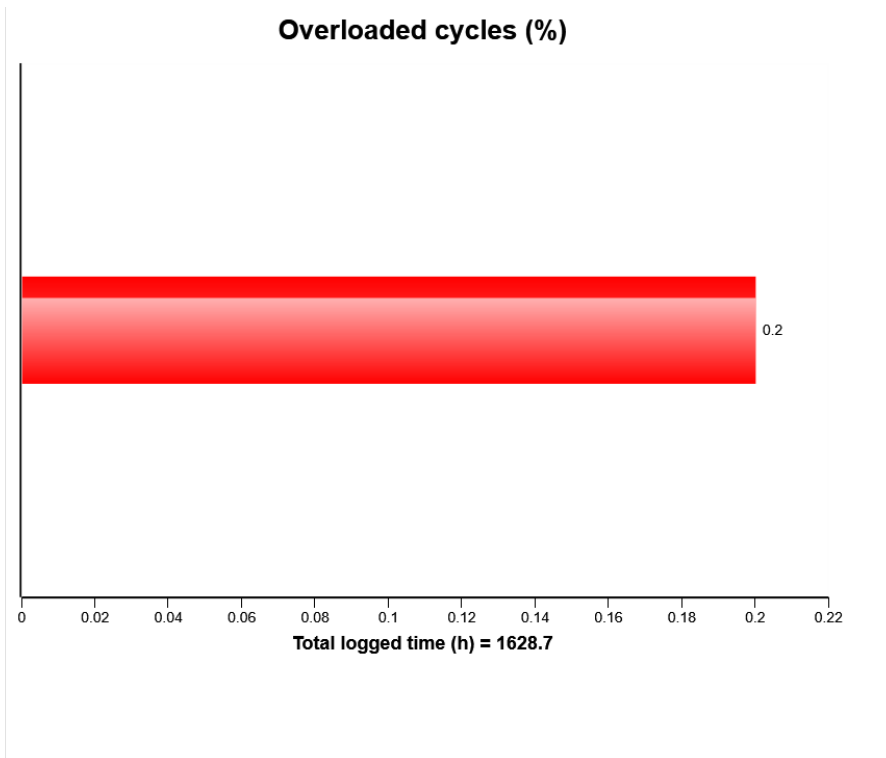
Average number of cycles per hour



Average carry back per cycle

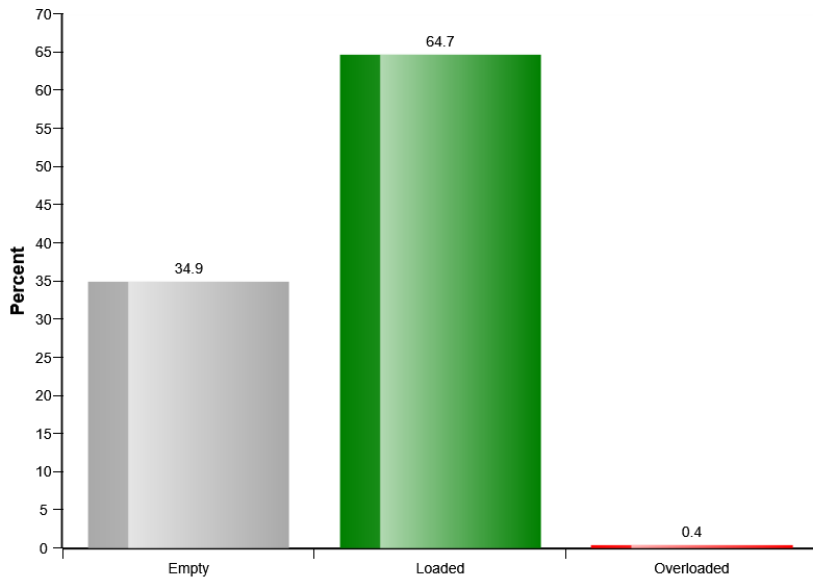


Machine model	SerialNo	Operating Hours	Reading Date
A40G	341571	3979	11/09/2019

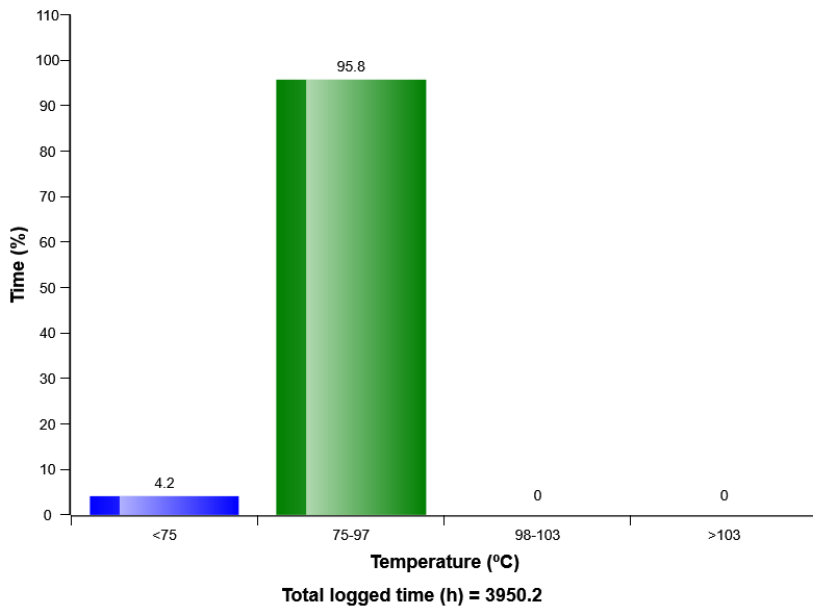


Machine model	SerialNo	Operating Hours	Reading Date
A40G	341571	3979	11/09/2019

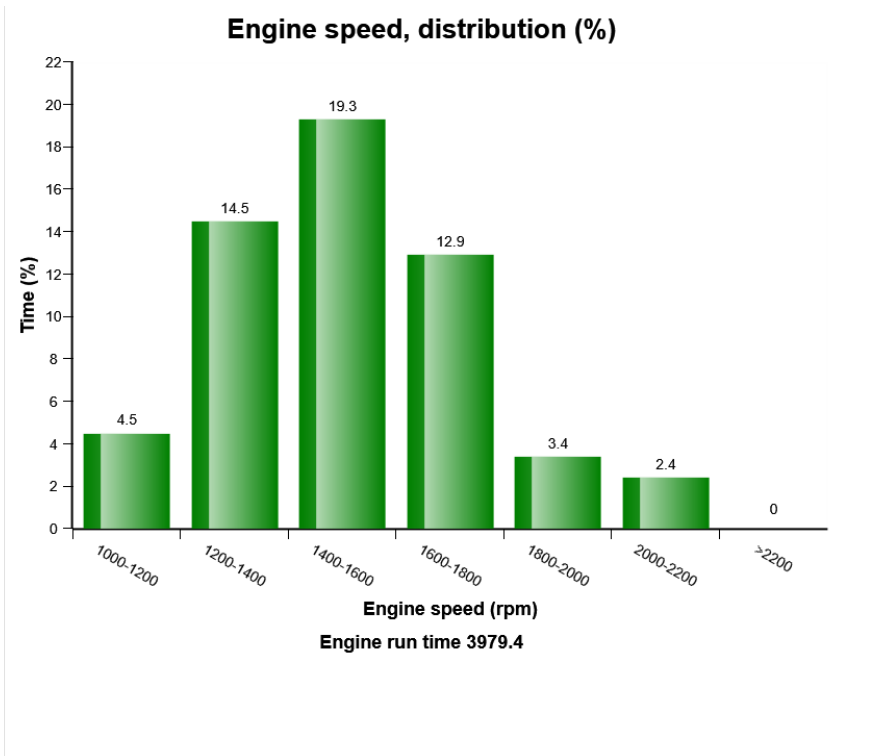
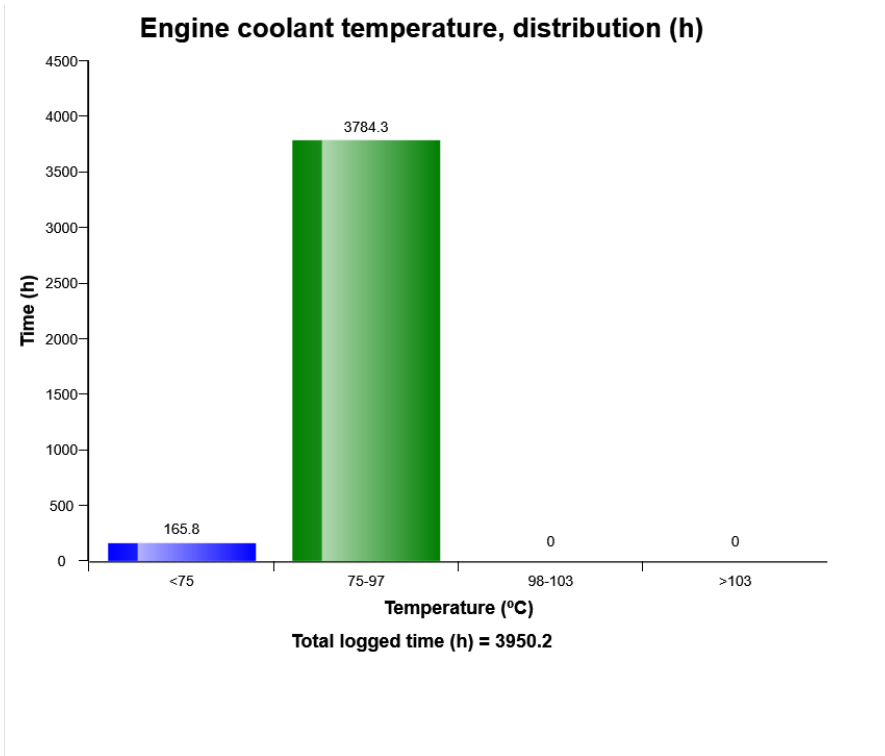
Distribution distance empty vs loaded vs overloaded (%)



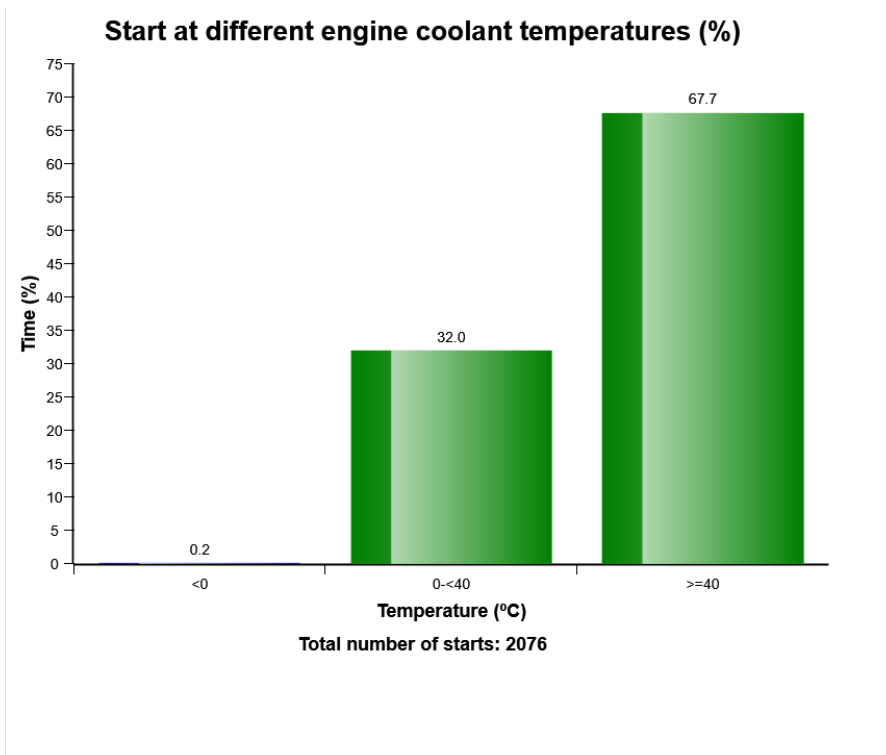
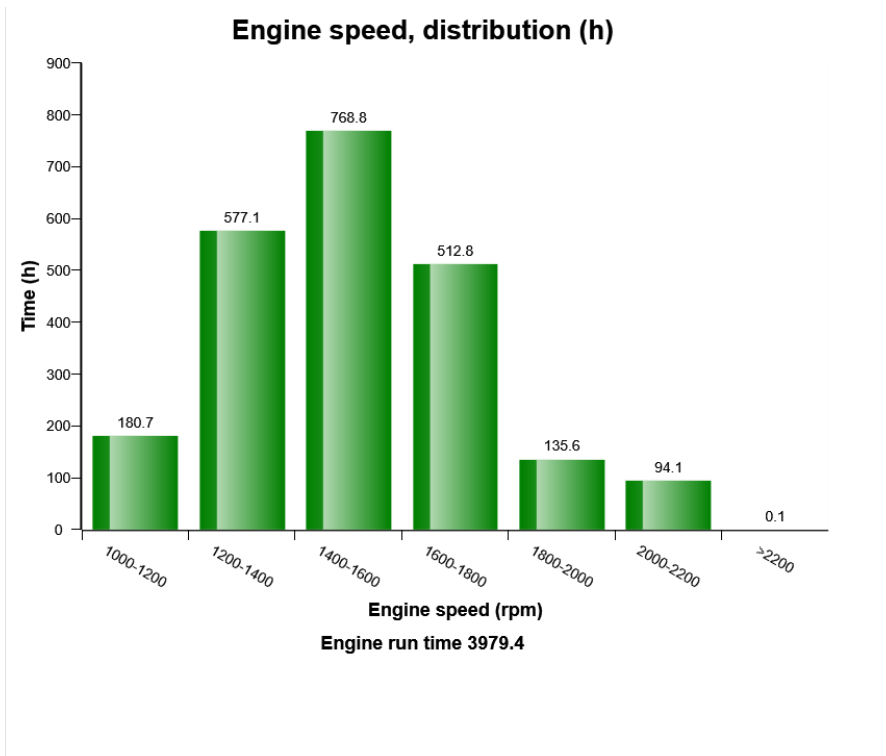
Engine coolant temperature, distribution (%)



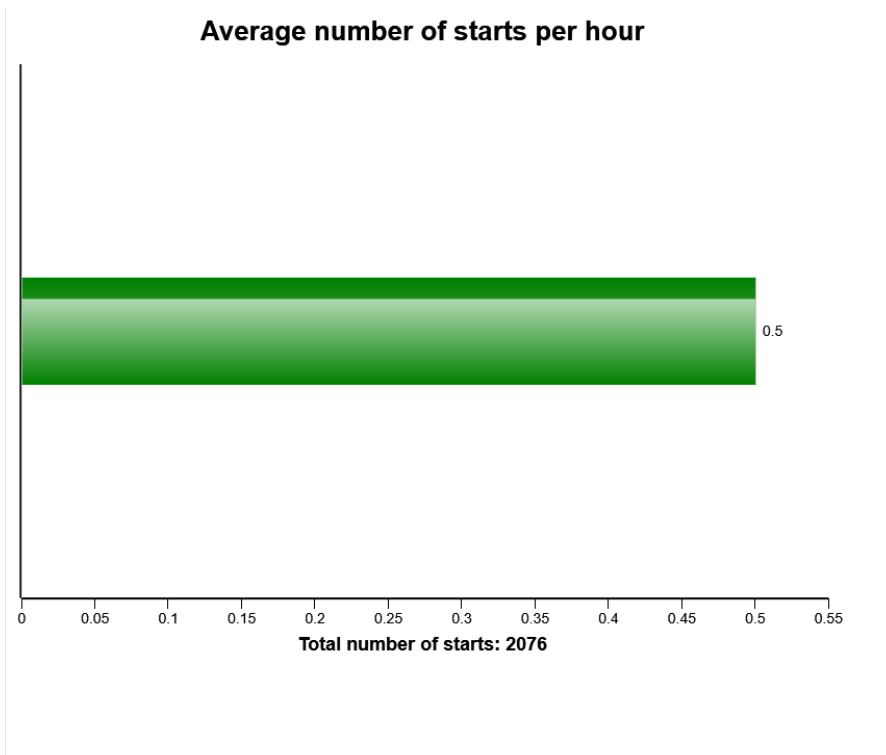
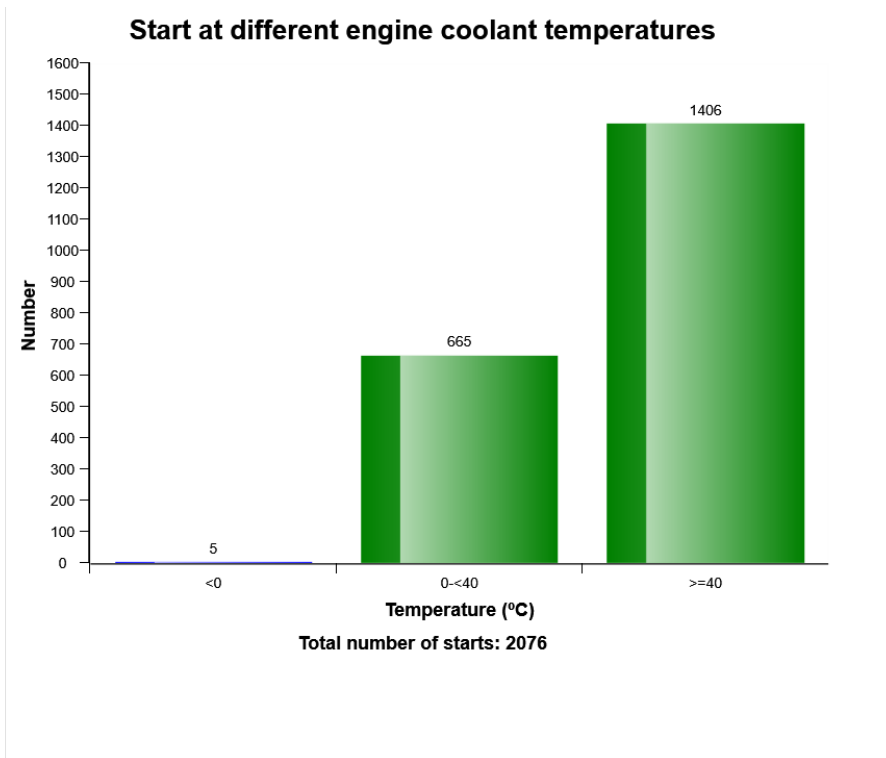
Machine model	SerialNo	Operating Hours	Reading Date
A40G	341571	3979	11/09/2019



Machine model	SerialNo	Operating Hours	Reading Date
A40G	341571	3979	11/09/2019



Machine model	SerialNo	Operating Hours	Reading Date
A40G	341571	3979	11/09/2019



Machine model	SerialNo	Operating Hours	Reading Date
A40G	341571	3979	11/09/2019

Low Air filter pressure
Total number of occurrences = 620

Op hours	Year	Month	Day	Hour	Minute	Duration (sec)
3612	2019	4	29	5	55	6
3612	2019	4	29	6	8	7642
3614	2019	4	29	9	17	5
3615	2019	4	29	14	47	13257
3618	2019	4	30	5	46	6
3619	2019	4	30	6	3	17631
3623	2019	4	30	11	39	2806
3624	2019	4	30	12	38	13501
3628	2019	5	1	6	11	7891
3628	2019	5	1	5	47	7
3631	2019	5	1	8	29	70
3631	2019	5	1	12	8	6
3631	2019	5	1	12	10	6615
3632	2019	5	1	14	8	4295
3634	2019	5	1	15	25	7385
3636	2019	5	2	9	59	6
3636	2019	5	2	10	2	3545
3637	2019	5	2	11	38	5218
3637	2019	5	2	11	32	7
3638	2019	5	2	13	5	6



Machine model	SerialNo	Operating Hours	Reading Date
A40G	341571	3979	11/09/2019

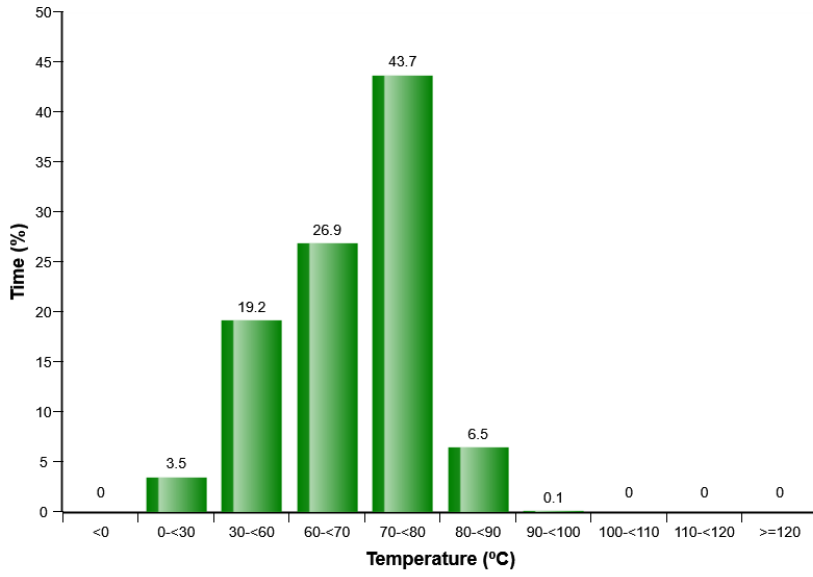
Regeneration duration
Total number of occurrences = 17

Op hours	Year	Month	Day	Hour	Minute	Duration (min)
0	2000	0	0	0	0	0
0	2000	0	0	0	0	0
0	2000	0	0	0	0	0
1	2016	10	6	23	19	53
502	2017	3	22	7	1	40
1002	2099	3	24	15	6	41
1535	2099	8	24	9	34	42
2038	2090	4	19	9	10	47
2149	2090	5	14	8	7	48
2238	2090	5	28	17	18	37
2239	2090	5	29	7	15	29
2331	2090	6	7	13	3	2
2332	2090	6	7	13	34	53
2332	2090	6	7	13	6	21
2833	2090	9	6	9	2	34
2834	2090	9	6	9	37	21
2834	2090	9	6	10	20	31
3335	2019	3	18	7	40	45
3860	2019	8	20	7	37	45
3942	2019	8	30	13	33	46

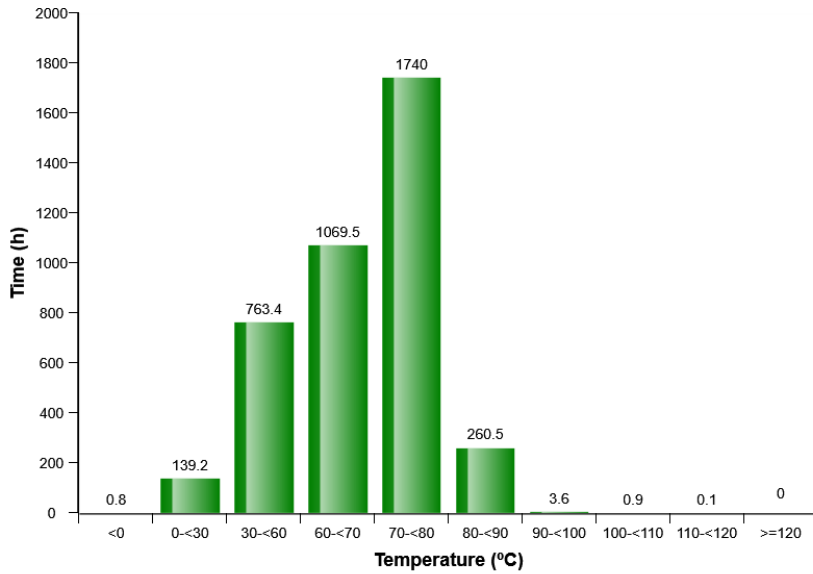


Machine model	SerialNo	Operating Hours	Reading Date
A40G	341571	3979	11/09/2019

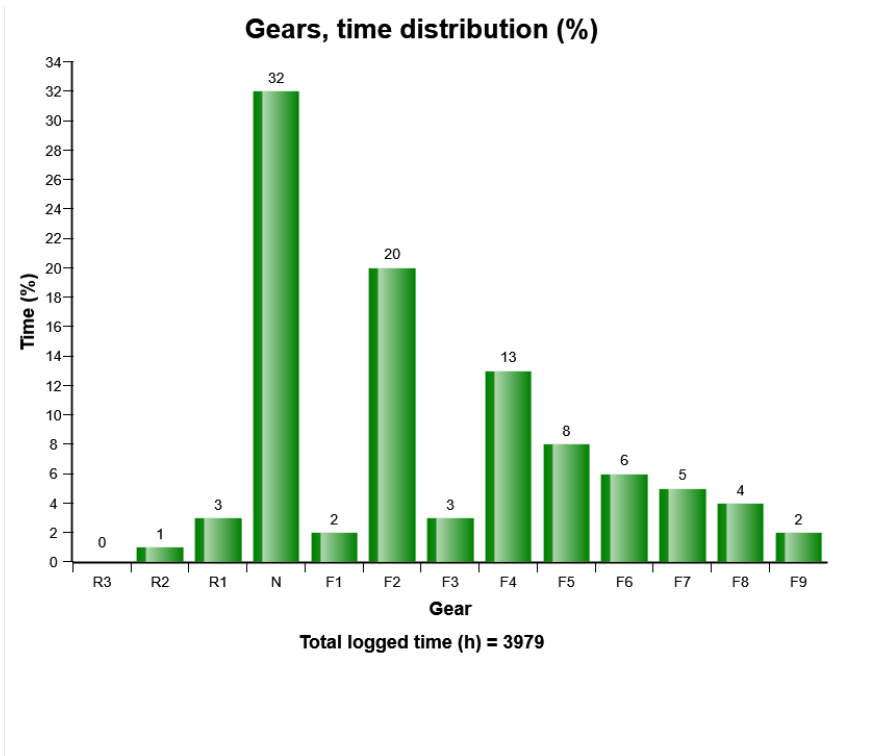
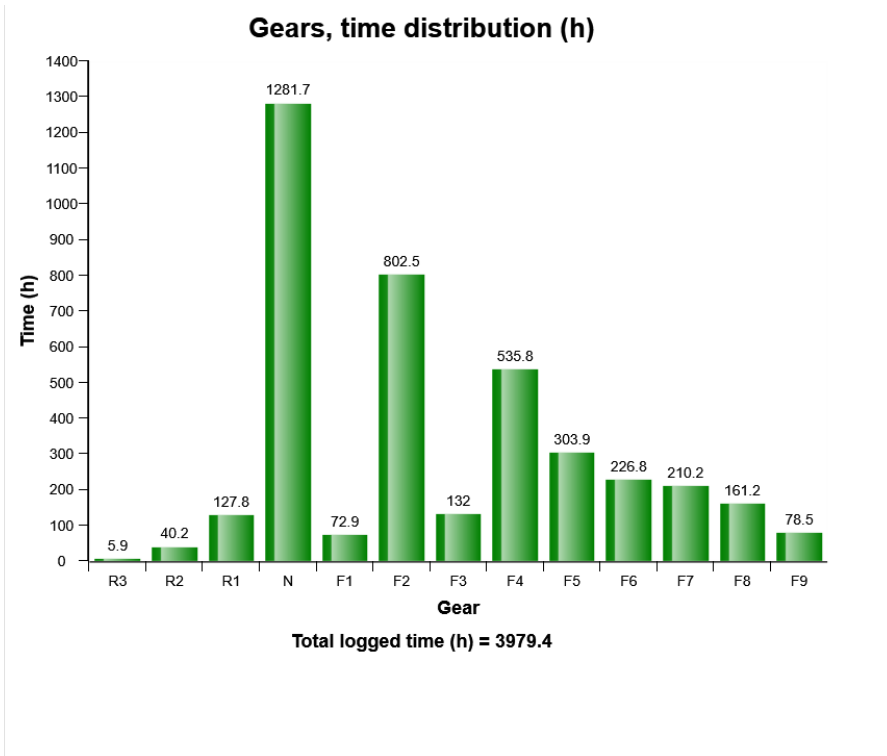
Transmission oil, temperature distribution (%)



Transmission oil, temperature distribution (h)

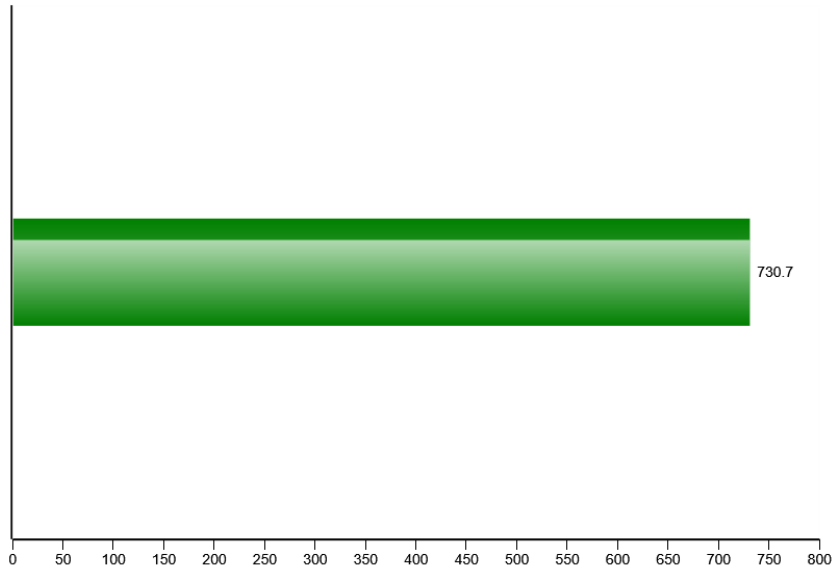


Machine model	SerialNo	Operating Hours	Reading Date
A40G	341571	3979	11/09/2019

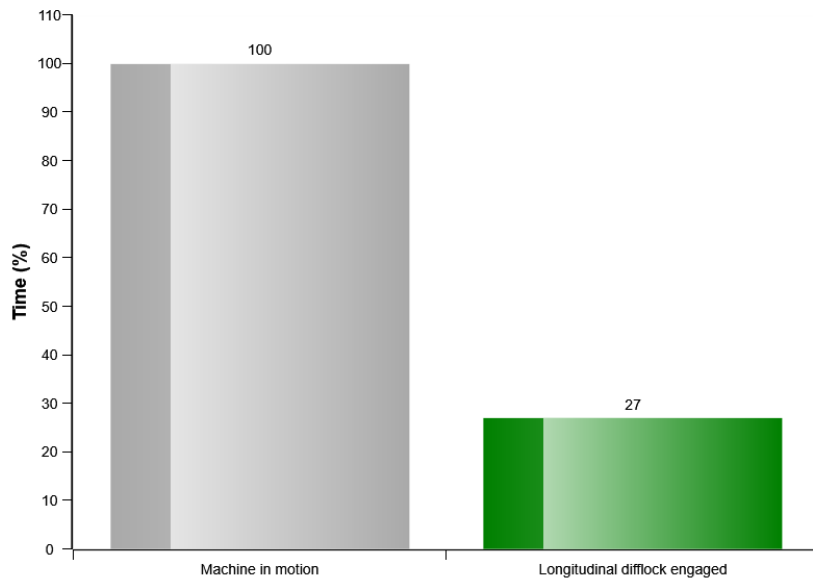


Machine model	SerialNo	Operating Hours	Reading Date
A40G	341571	3979	11/09/2019

Longitudinal difflock engaged (h)



Longitudinal difflock use related to machine in motion (%)



Machine model	SerialNo	Operating Hours	Reading Date
A40G	341571	3979	11/09/2019

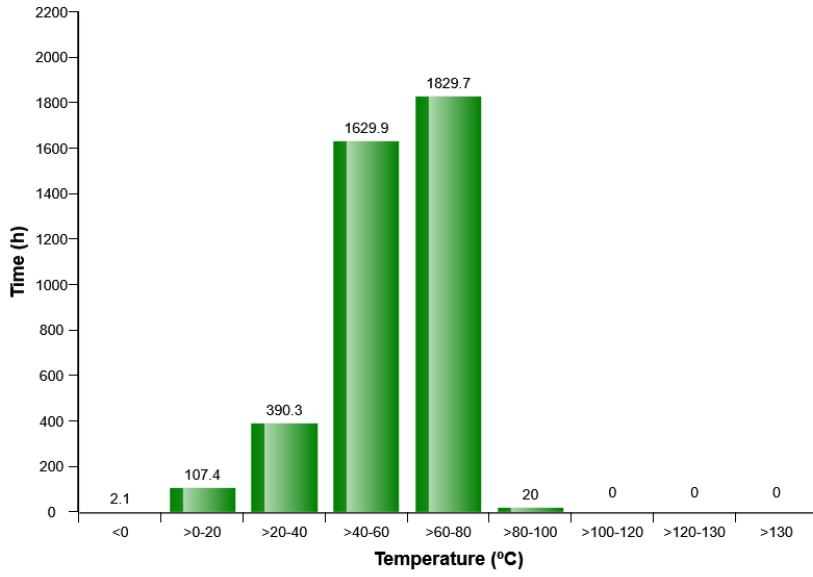
**Transmission oil pressure low
Total number of occurrences = 13**

Op hours	Year	Month	Day	Hour	Minute	Duration (sec)	Extreme (bar)
0	2000	0	0	0	0	0	0.0
0	2000	0	0	0	0	0	0.0
0	2000	0	0	0	0	0	0.0
0	2000	0	0	0	0	0	0.0
0	2000	0	0	0	0	0	0.0
0	2000	0	0	0	0	0	0.0
0	2000	0	0	0	0	0	0.0
0	2000	0	0	0	0	0	0.0
470	2017	3	16	7	59	0	231.9
652	2099	1	16	13	56	0	232.6
653	2099	1	16	15	5	0	229.7
655	2099	1	16	17	33	0	123.8
853	2099	2	21	15	19	0	102.9
981	2099	3	13	13	20	0	94.9
1021	2099	3	28	9	4	0	84.6
1024	2099	3	29	7	32	0	113.9
1099	2099	5	20	12	34	0	79.1
1938	2099	1	11	12	53	10	103.7
1985	2099	1	18	15	35	0	0.0
2035	2090	4	9	13	4	0	226.7
2893	2090	9	11	17	18	1	9.9

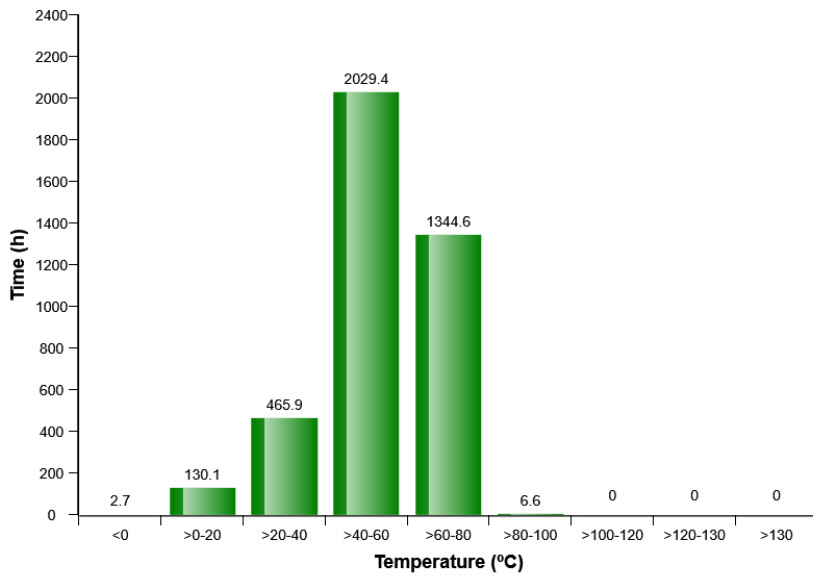


Machine model	SerialNo	Operating Hours	Reading Date
A40G	341571	3979	11/09/2019

Service brake cooling oil, front axle temperature

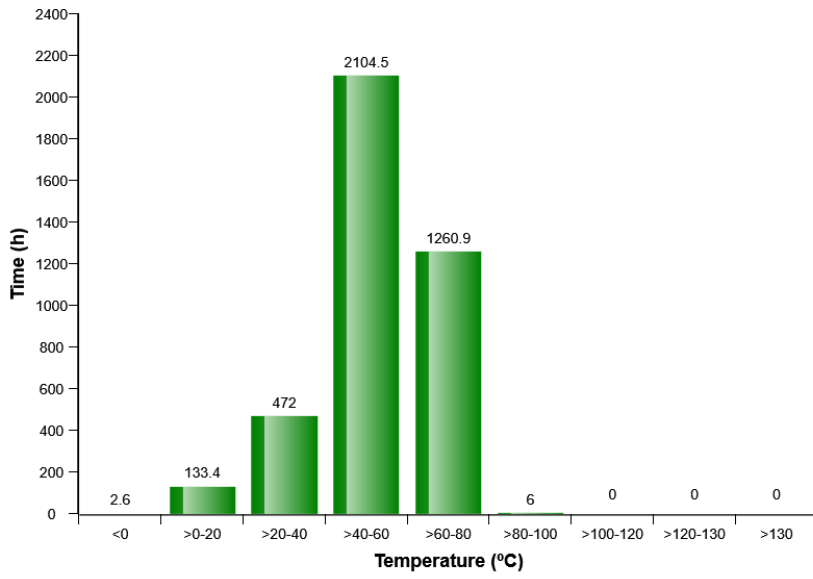


Service brake cooling oil, first bogie axle temperature

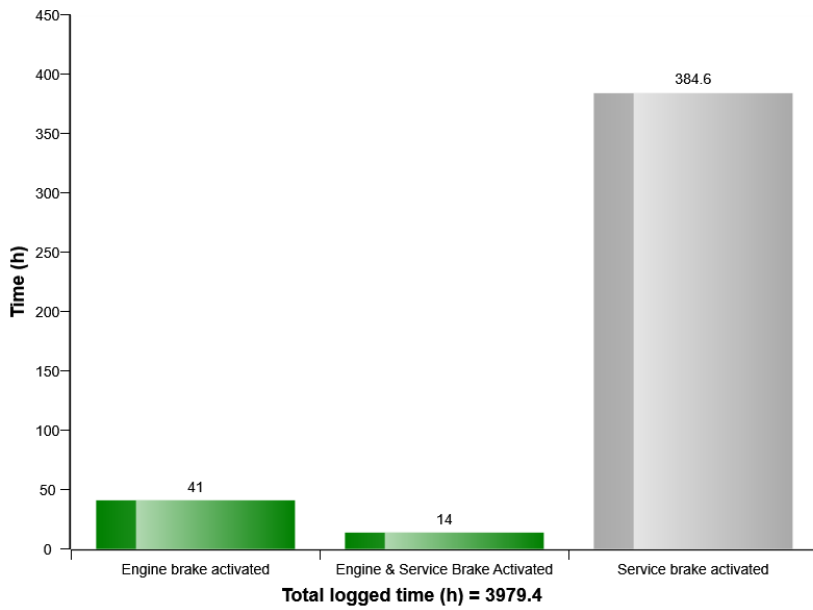


Machine model	SerialNo	Operating Hours	Reading Date
A40G	341571	3979	11/09/2019

Service brake cooling oil, second bogie axle temperature



Brake Usage (h)



Machine model	SerialNo	Operating Hours	Reading Date
A40G	341571	3979	11/09/2019

**Low Brake Servo Pressure
Total number of occurrences = 10**

	Op hours	Year	Month	Day	Hour	Minute	Duration (sec)
A	505	2017	3	22	6	50	0
B	684	2099	1	20	6	59	0
C	785	2099	2	11	6	57	0
D	839	2099	2	20	9	8	0
E	846	2099	2	21	6	53	0
F	961	2099	3	9	6	51	0
G	1058	2099	4	28	7	36	0
H	1488	2099	8	11	7	13	0
I	2069	2090	4	27	9	21	0
J	3735	2019	6	5	6	7	1

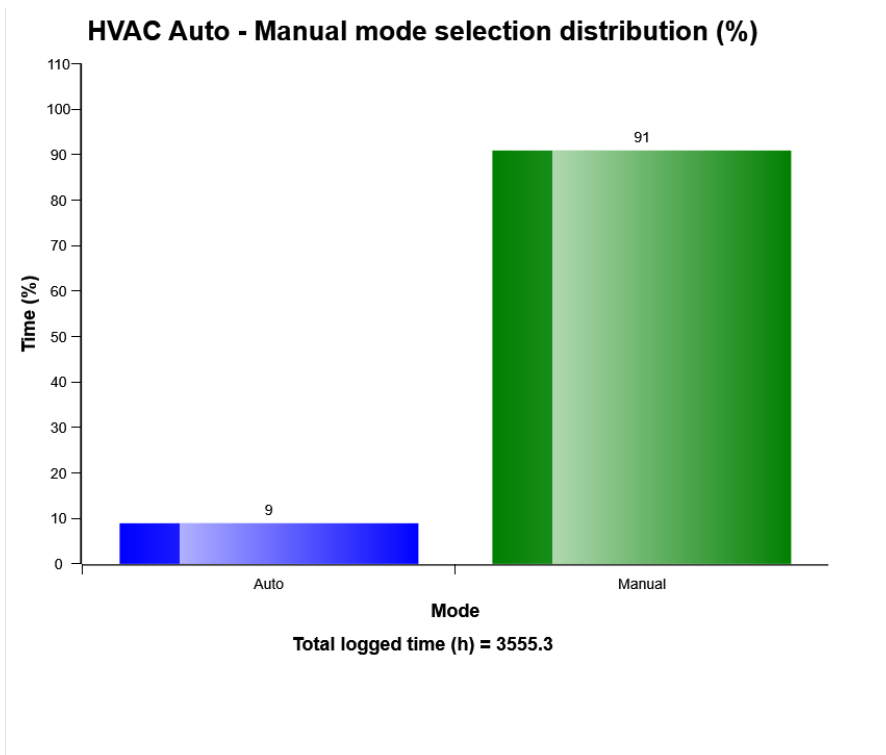
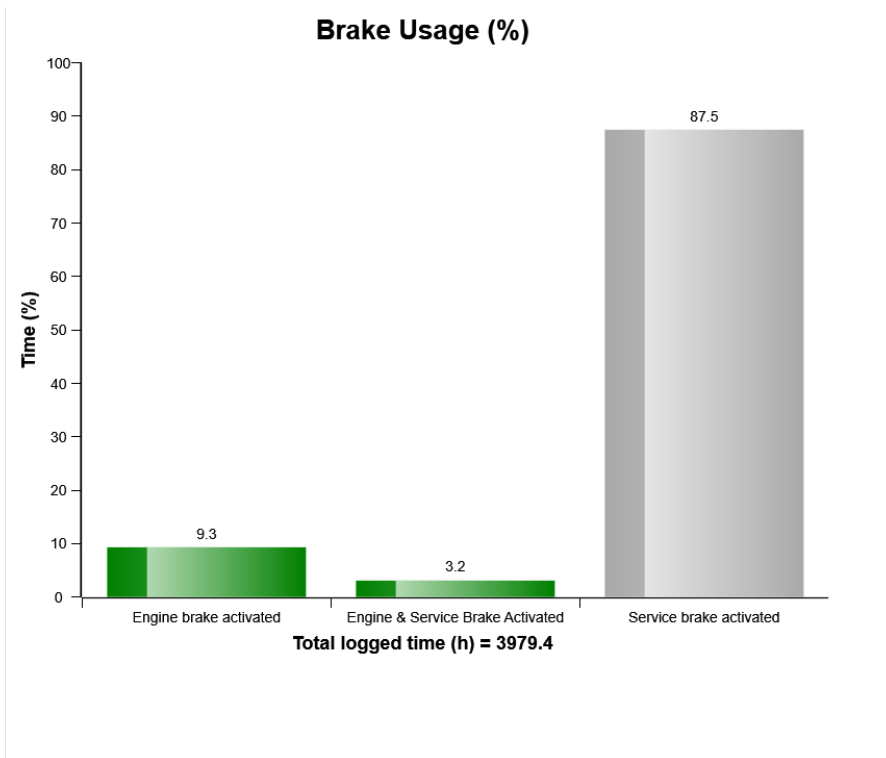


**Extreme
(bar)**

153
161
150
146
158
150
167
159
153
138

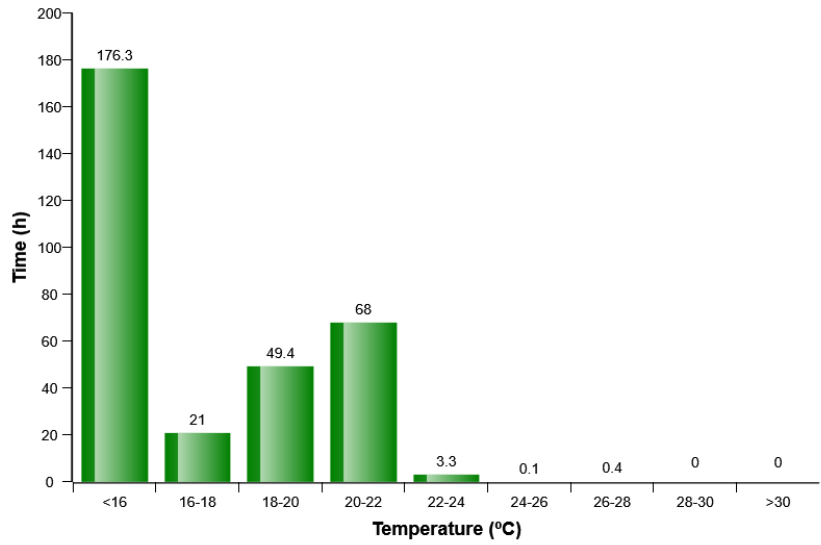


Machine model	SerialNo	Operating Hours	Reading Date
A40G	341571	3979	11/09/2019

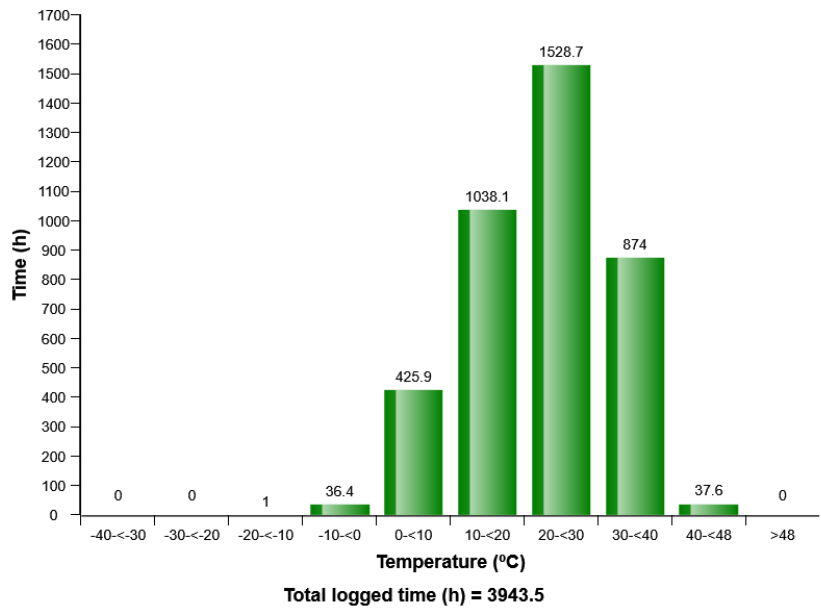


Machine model	SerialNo	Operating Hours	Reading Date
A40G	341571	3979	11/09/2019

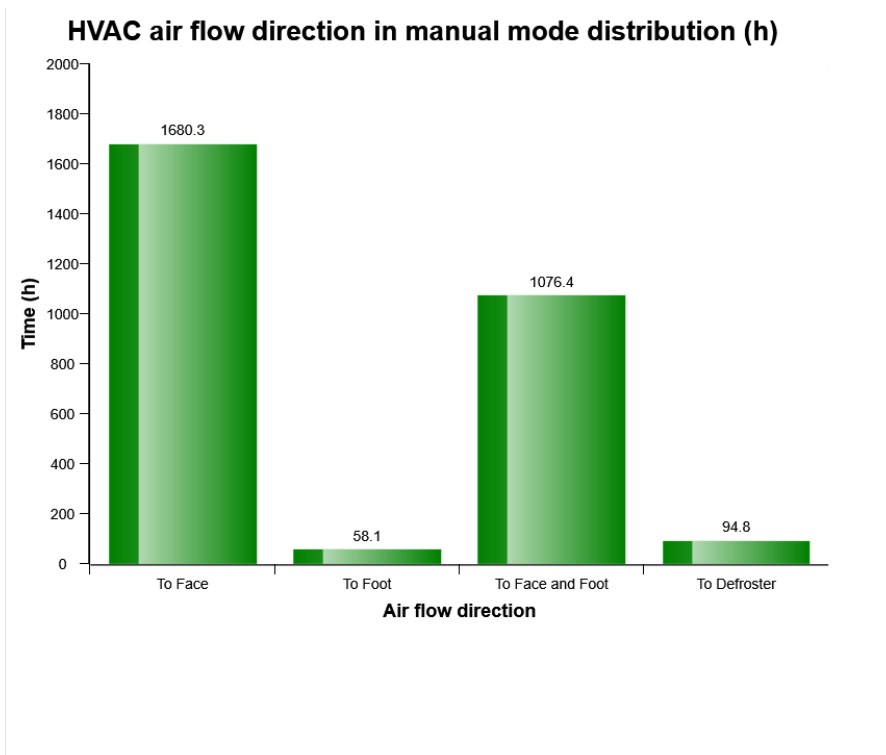
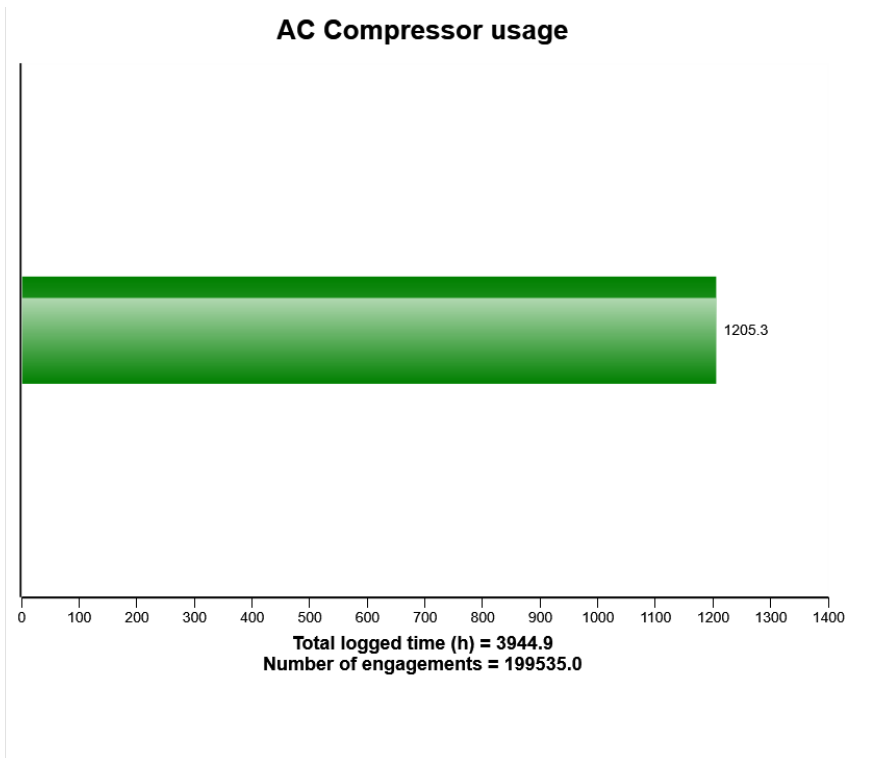
HVAC air temperature setting in auto control mode distribution (h)



Machine ambient temperature distribution (h)



Machine model	SerialNo	Operating Hours	Reading Date
A40G	341571	3979	11/09/2019



Machine model	SerialNo	Operating Hours	Reading Date
A40G	341571	3979	11/09/2019

AC High Pressure
Total number of occurrences = 269

Op hours	Year	Month	Day	Hour	Minute	Duration (sec)	Extreme (° C)
3716	2019	5	20	14	0	4	30
3716	2019	5	20	14	7	9	30
3717	2019	5	20	14	53	40	31
3717	2019	5	20	14	30	14	30
3772	2019	7	26	15	27	4	35
3792	2019	7	30	16	9	24	38
3792	2019	7	30	15	49	27	38
3793	2019	7	30	16	48	57	38
3793	2019	7	30	16	44	48	37
3793	2019	7	30	16	59	145	38
3799	2019	7	31	12	41	18	37
3802	2019	7	31	16	17	22	37
3826	2019	8	12	11	49	12	35
3828	2019	8	12	15	27	15	35
3829	2019	8	12	16	52	10	37
3835	2019	8	13	11	38	22	37
3835	2019	8	13	11	34	18	37
3837	2019	8	13	14	16	18	38
3837	2019	8	13	14	4	11	38
3837	2019	8	13	14	49	7	39



Machine model	SerialNo	Operating Hours	Reading Date
A40G	341571	3979	11/09/2019

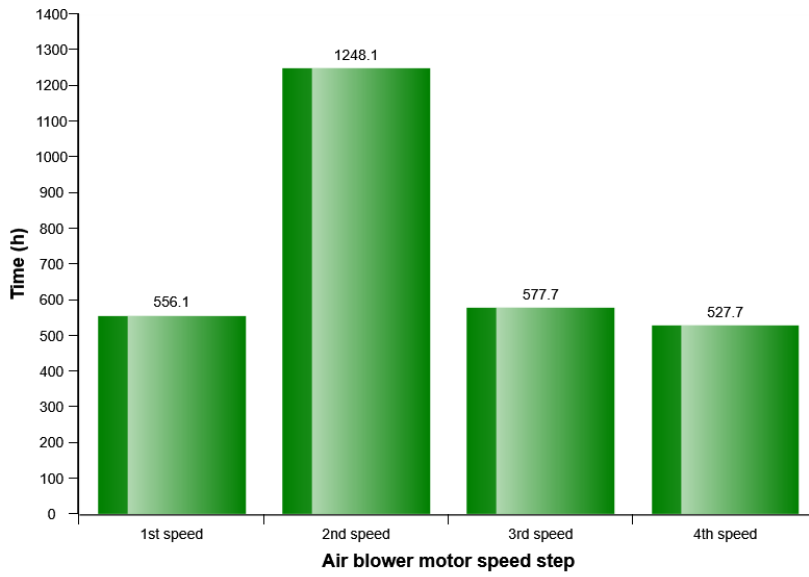
**AC System Cut Out Pressure
Total number of occurrences = 162**

Op hours	Year	Month	Day	Hour	Minute	Duration (sec)	Extreme (° C)
2042	2090	4	17	10	14	91	32
2042	2090	4	17	14	24	216	32
2042	2090	4	17	17	55	3818	33
2043	2090	4	18	11	19	2131	33
2043	2090	4	18	8	52	127	25
2043	2090	4	18	9	49	0	34
2044	2090	4	18	12	41	23401	0
2050	2090	4	19	7	17	-49219	32
2055	2090	4	19	12	38	183	34
2055	2090	4	19	13	25	150	36
2055	2090	4	19	17	57	5140	37
2057	2090	4	20	7	6	8806	31
2059	2090	4	23	11	54	17612	34
2059	2090	4	20	10	14	473	30
2064	2090	4	23	17	26	6877	35
2066	2090	4	24	7	14	4101	31
2067	2090	4	24	8	32	-59461	27
3274	2019	3	4	6	54	2	-7
3284	2019	3	5	6	50	17	-7
3647	2019	4	30	8	53	7	26

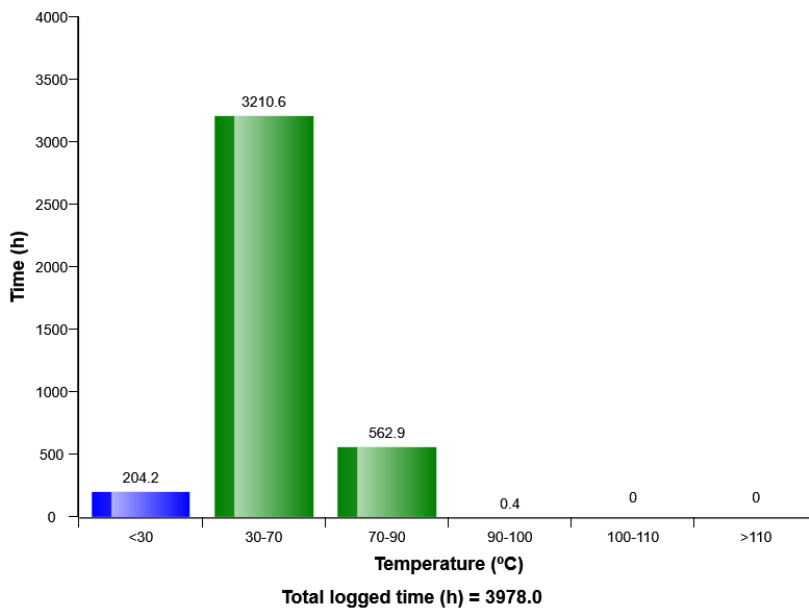


Machine model	SerialNo	Operating Hours	Reading Date
A40G	341571	3979	11/09/2019

HVAC air blower motor speed in manual mode distribution (h)



Hydraulic oil, temperature distribution (h)



Machine model	SerialNo	Operating Hours	Reading Date
A40G	341571	3979	11/09/2019

