

VOLVO CONSTRUCTION EQUIPMENT MATRIS REPORT

Machine model A45G	SerialNo 342069	Operating Hours 4930	Reading Date 10/09/2019
Company name Hoffman	Dealer	Report Issuer	
Contact name	Technician Edwin Cabrera	Primary Application Earth moving construction	
Site	Workorder	Ground Condition	

MATRIS Reading, Summary / Recommendation



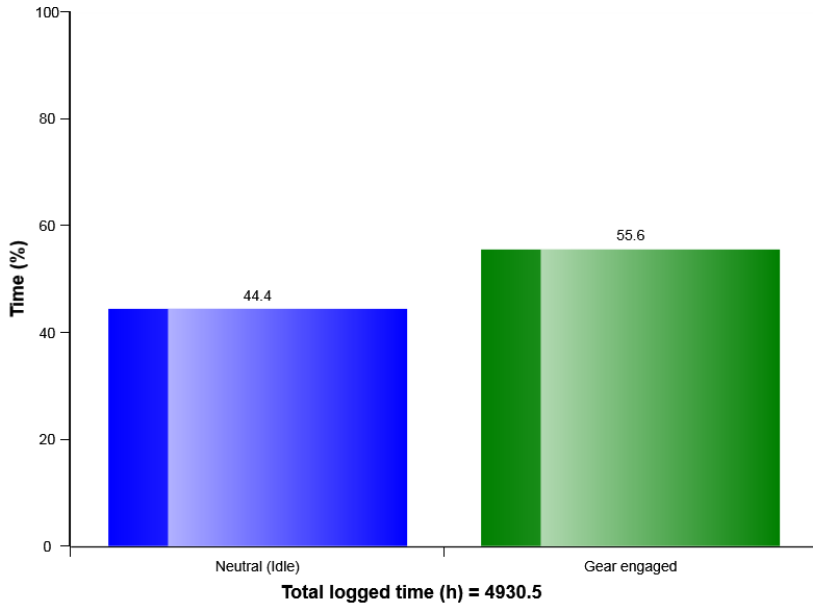
Machine model	SerialNo	Operating Hours	Reading Date
A45G	342069	4930	10/09/2019

Main equipment	Type	Equipment
	Tyre size/class	Sold without tyres
	Body extensions	Not mounted
	Tail-gate	Not mounted
	Extra spillguard	Not mounted
	Wear plates	Not mounted
	Pattern	None

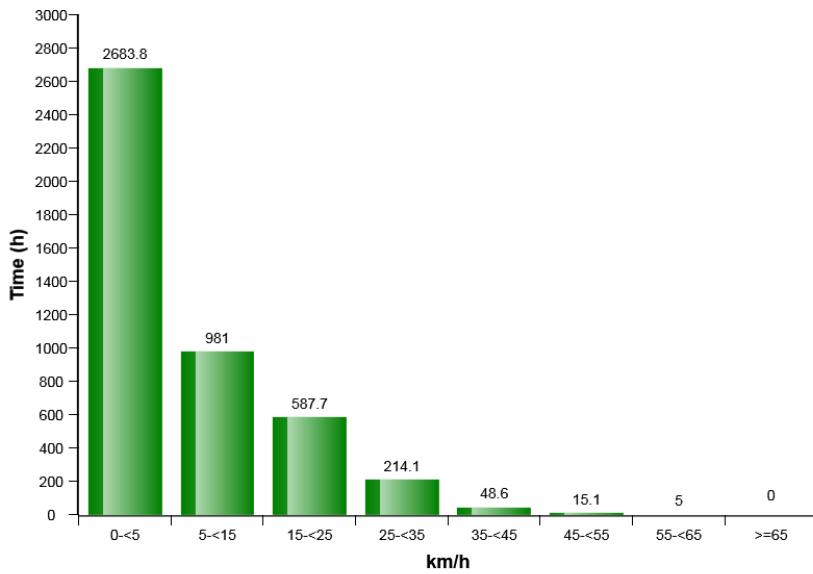


Machine model	SerialNo	Operating Hours	Reading Date
A45G	342069	4930	10/09/2019

Machine utilization (%)

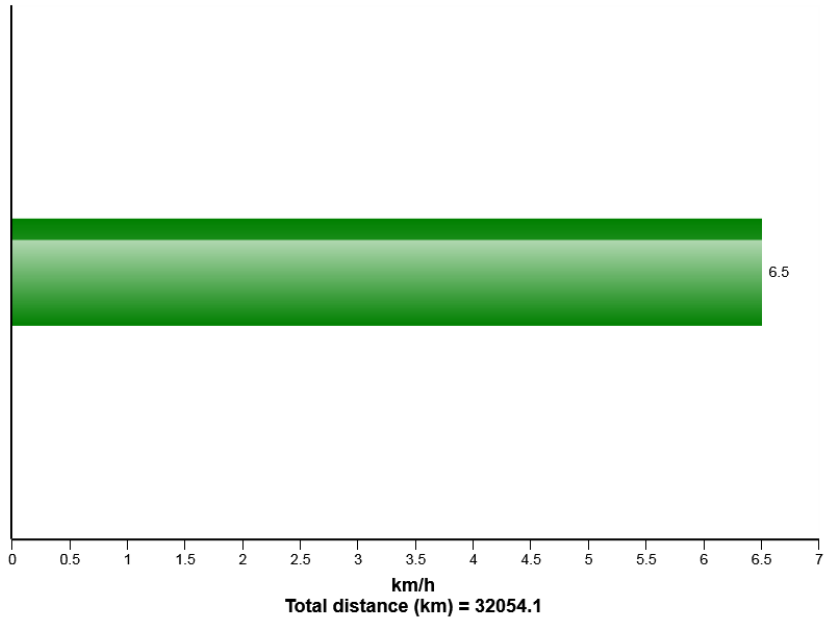


Machine speed, distribution

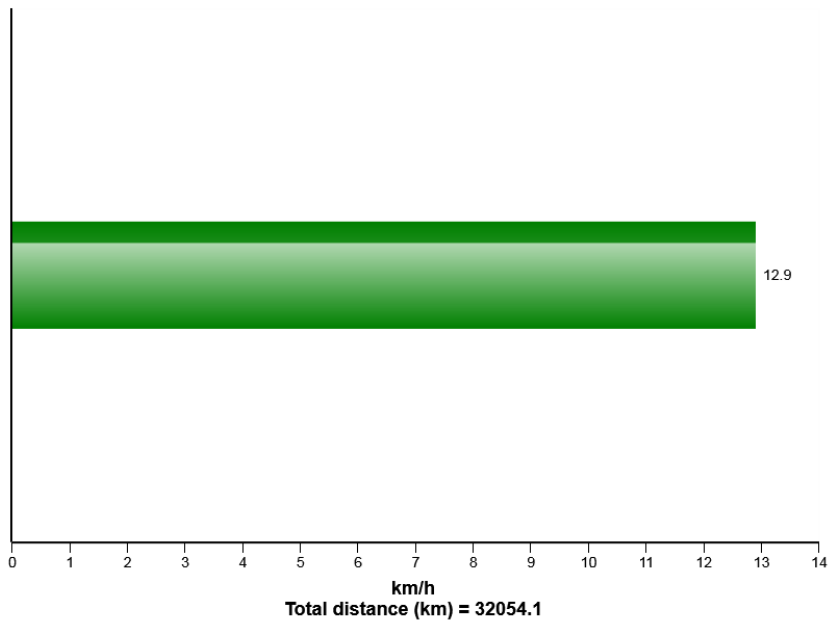


Machine model	SerialNo	Operating Hours	Reading Date
A45G	342069	4930	10/09/2019

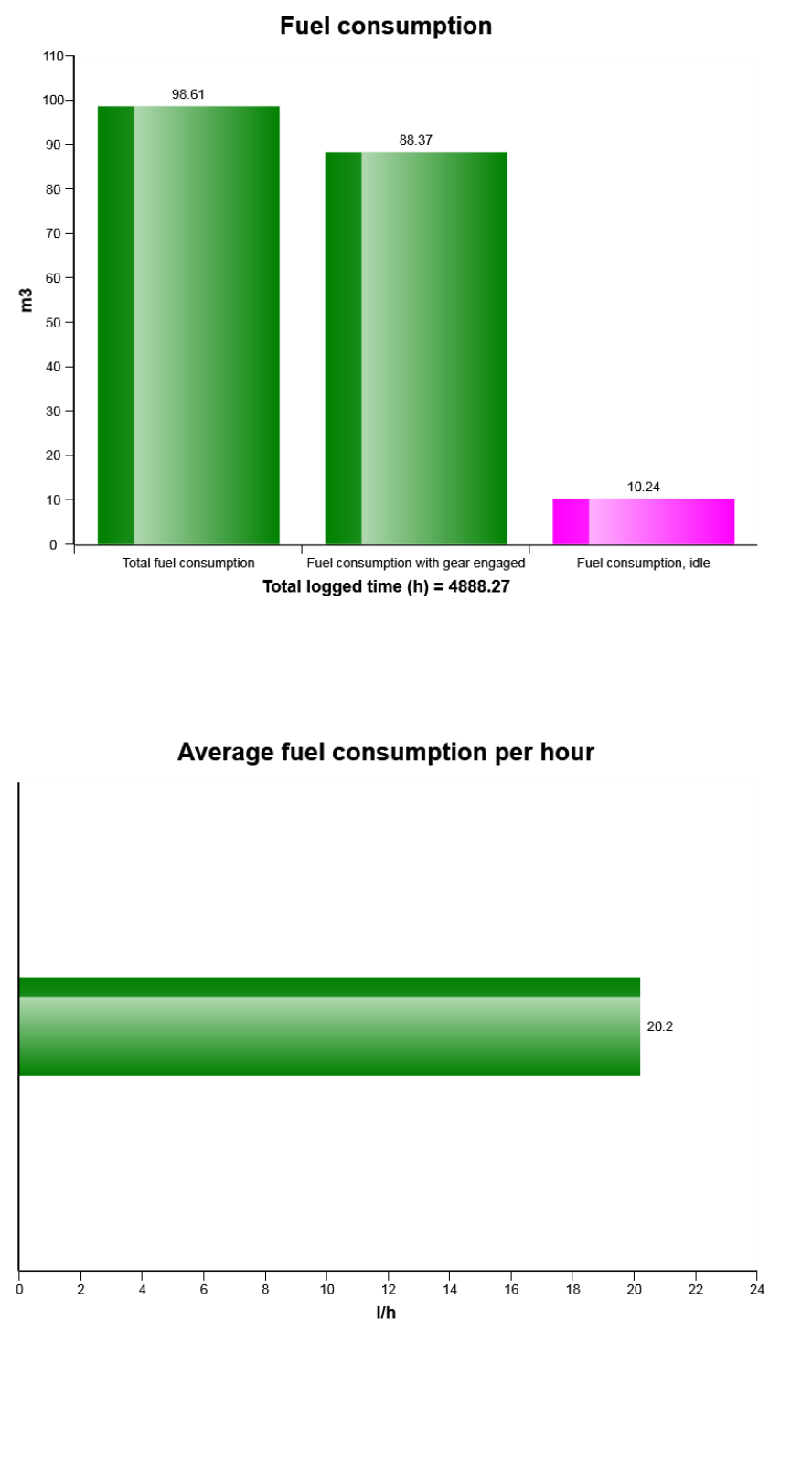
Average speed over total operating hours



Average speed with gear engaged

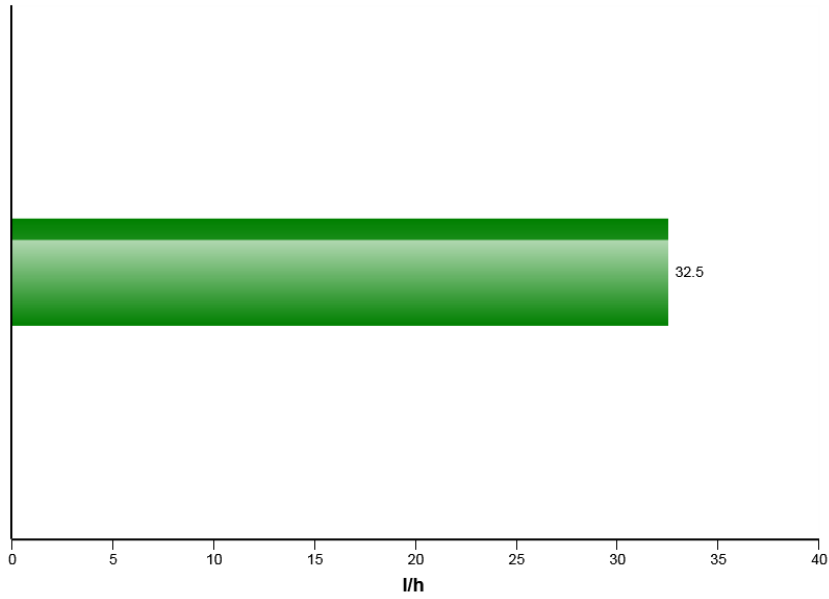


Machine model	SerialNo	Operating Hours	Reading Date
A45G	342069	4930	10/09/2019

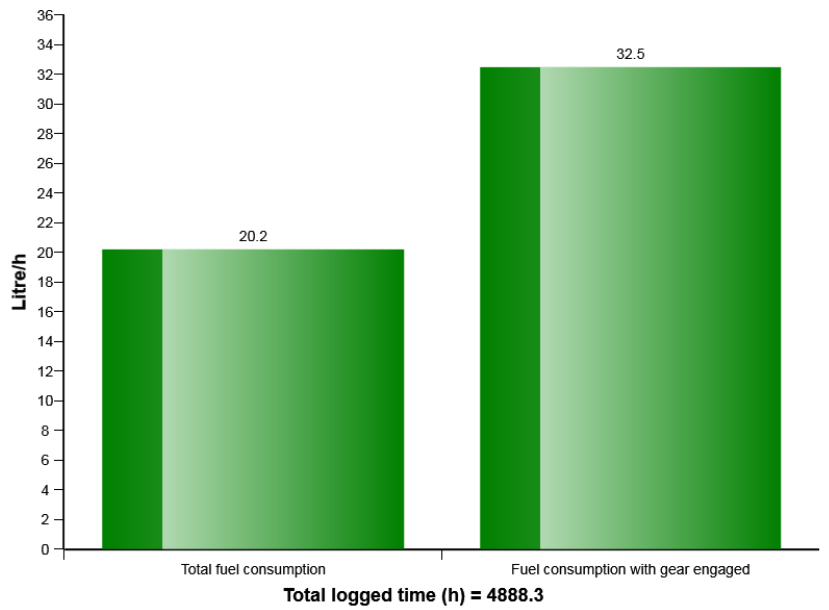


Machine model	SerialNo	Operating Hours	Reading Date
A45G	342069	4930	10/09/2019

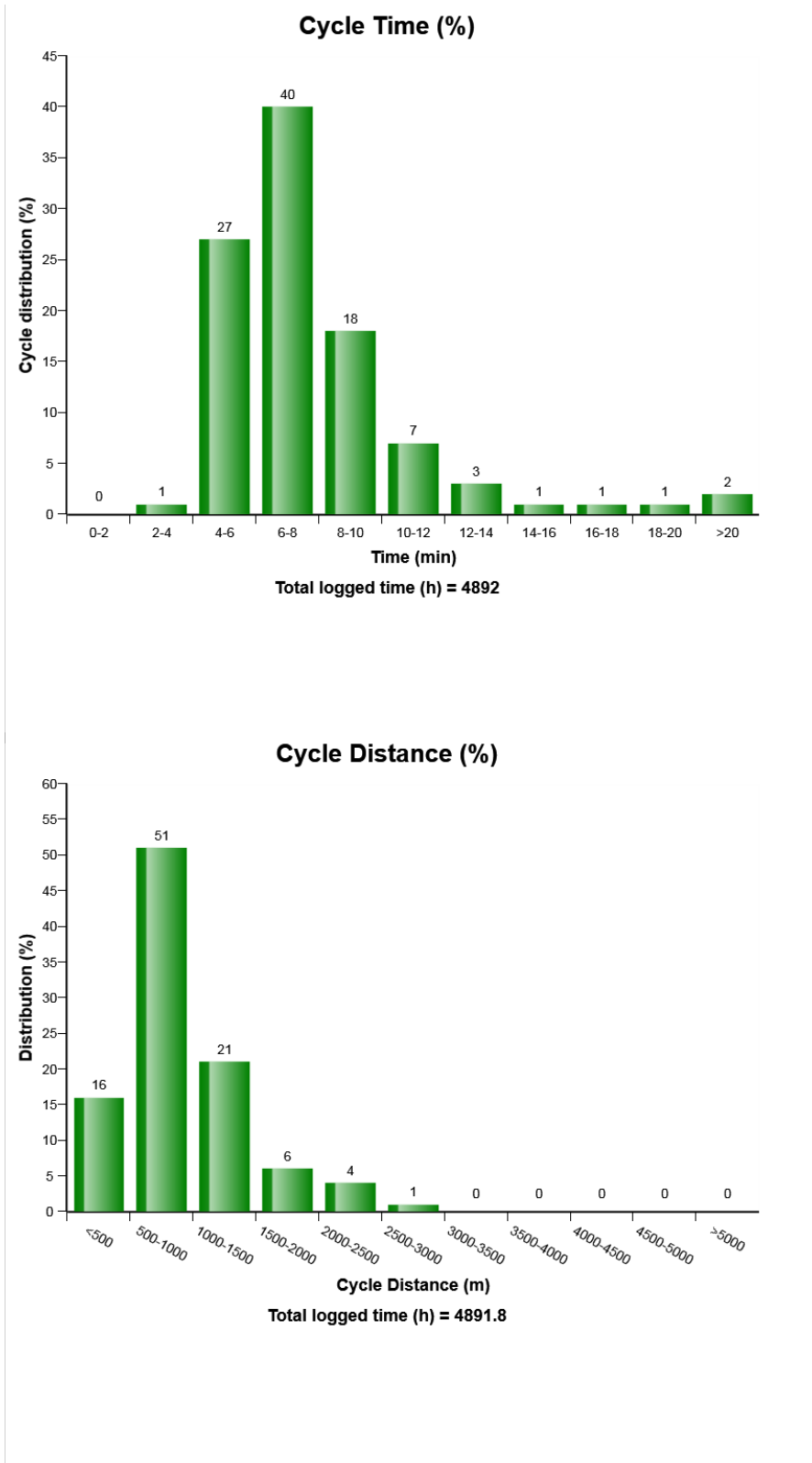
Average fuel consumption per hour with gear engaged



Average fuel consumption



Machine model	SerialNo	Operating Hours	Reading Date
A45G	342069	4930	10/09/2019



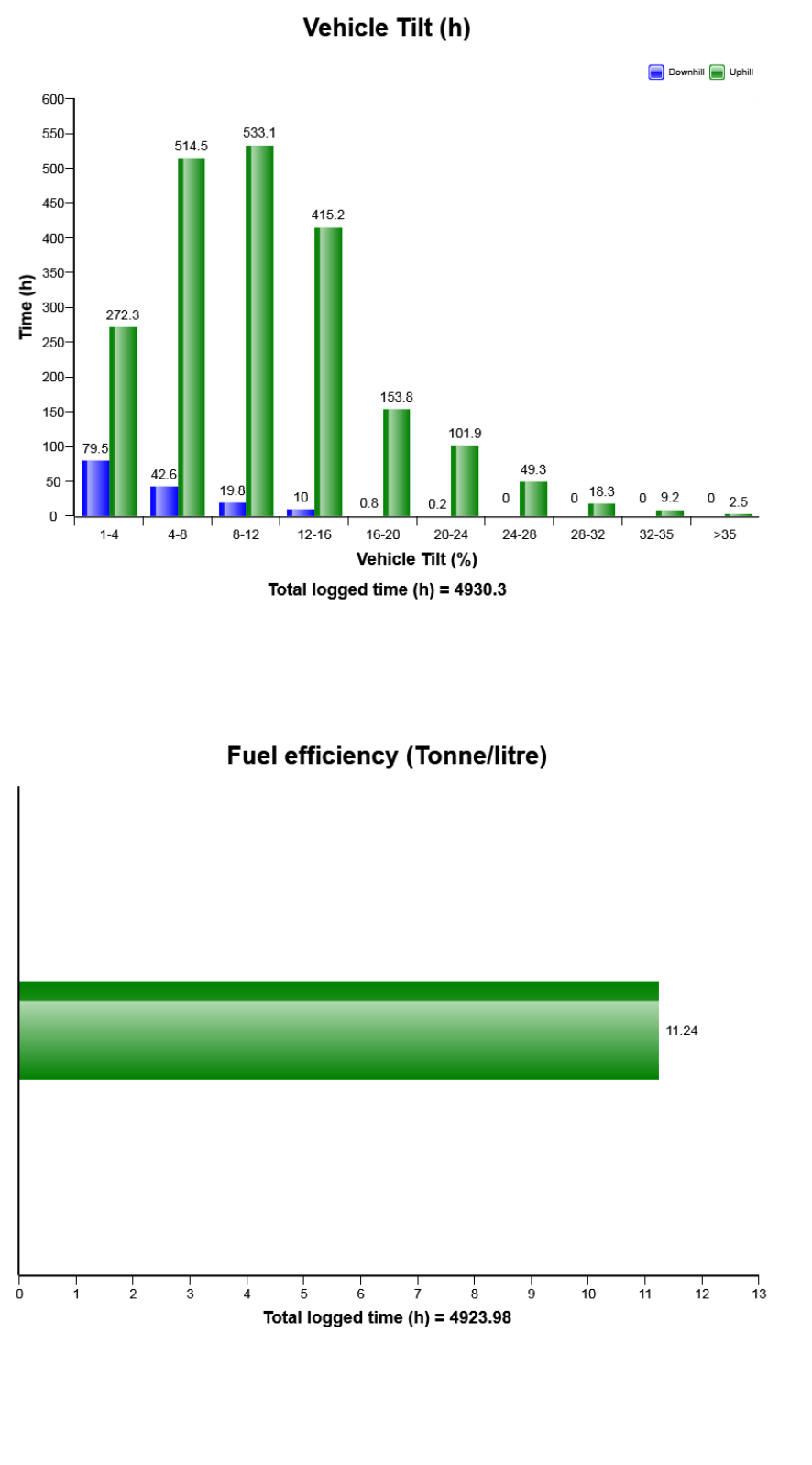
Machine model	SerialNo	Operating Hours	Reading Date
A45G	342069	4930	10/09/2019

Accumulated performance
Total logged time (h) =

Total logged time (h) =	4924.0
Total fuel consumption	98636.8
Production (tonne)	1108563.0
Tonne/h	225.1
Tonne/litre	11.2
Litre/tonne	0.1
Number of cycles	32192
Cycles overloaded (%)	11.4
Load utilisation / cycle (%)	84.0

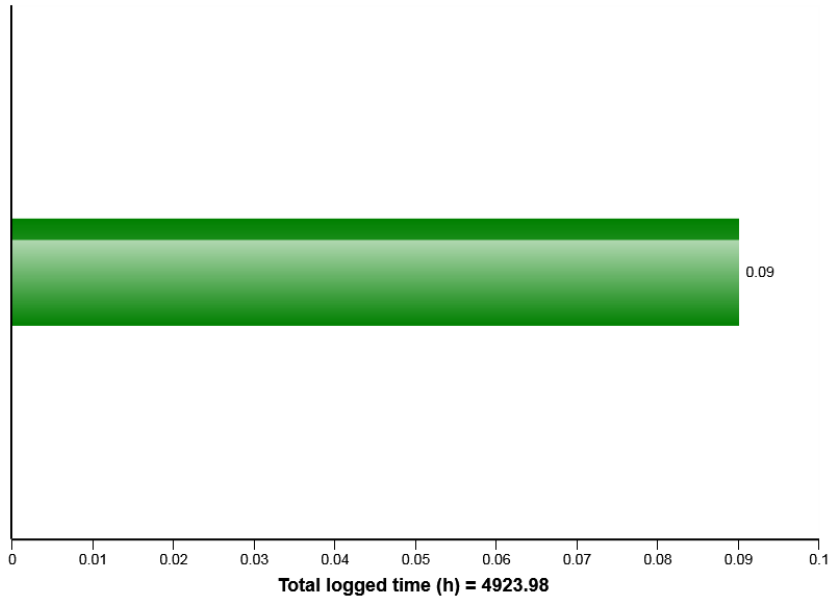


Machine model	SerialNo	Operating Hours	Reading Date
A45G	342069	4930	10/09/2019

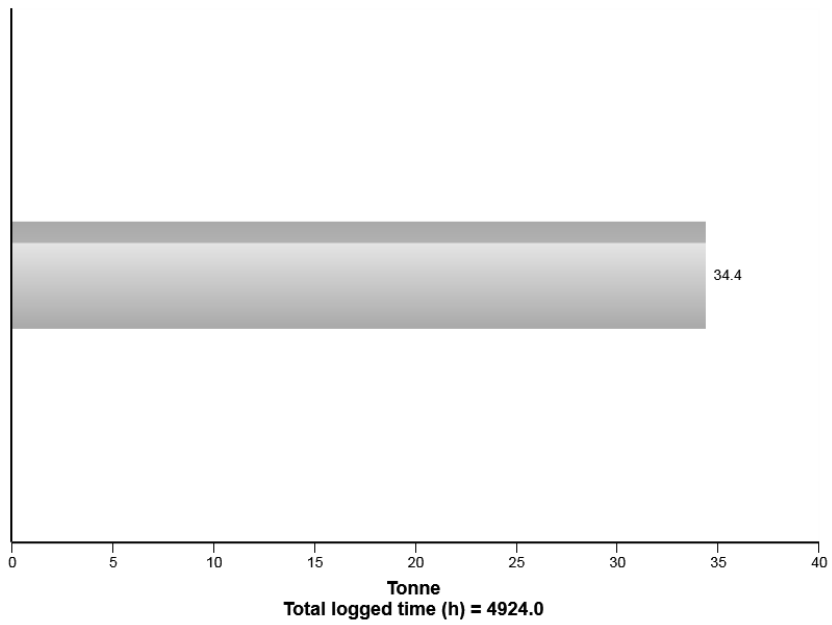


Machine model	SerialNo	Operating Hours	Reading Date
A45G	342069	4930	10/09/2019

Fuel efficiency (litre/tonne)

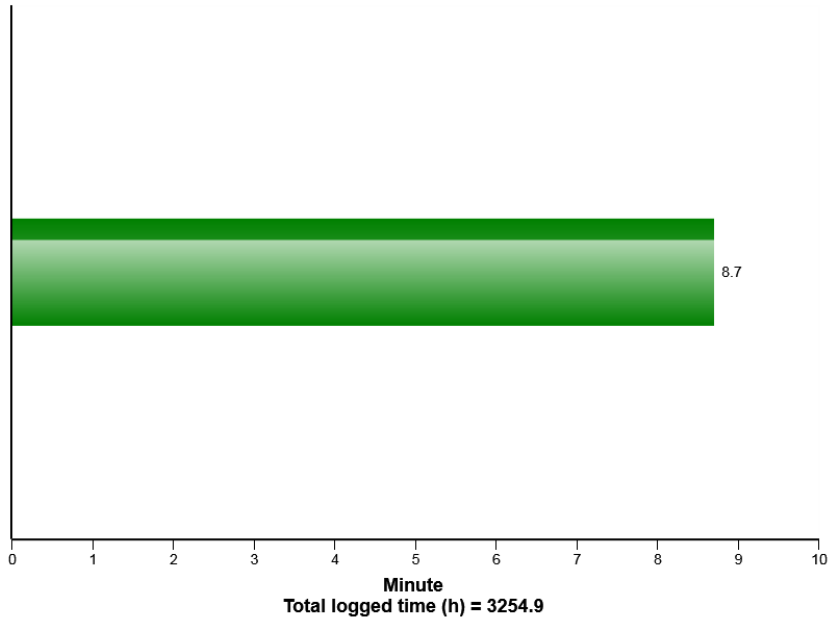


Average load

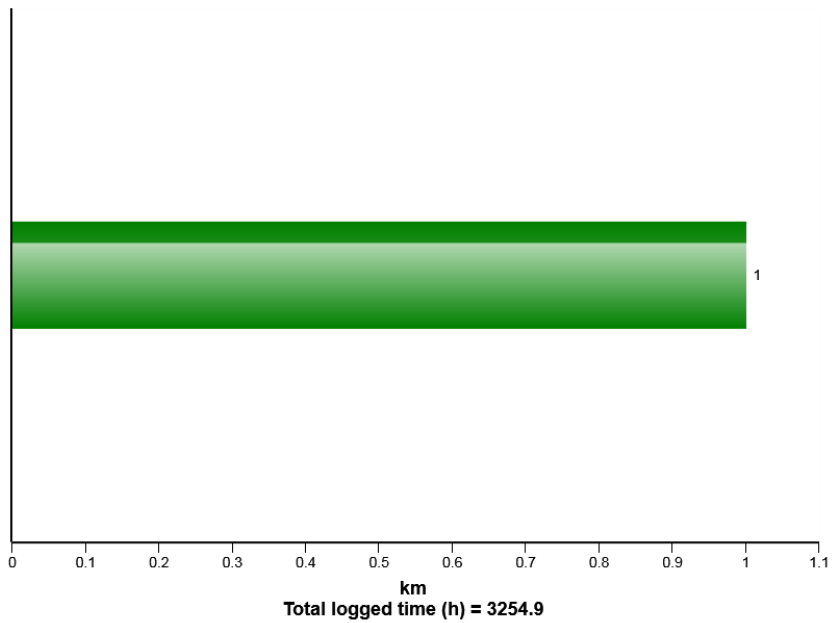


Machine model	SerialNo	Operating Hours	Reading Date
A45G	342069	4930	10/09/2019

Average cycle time

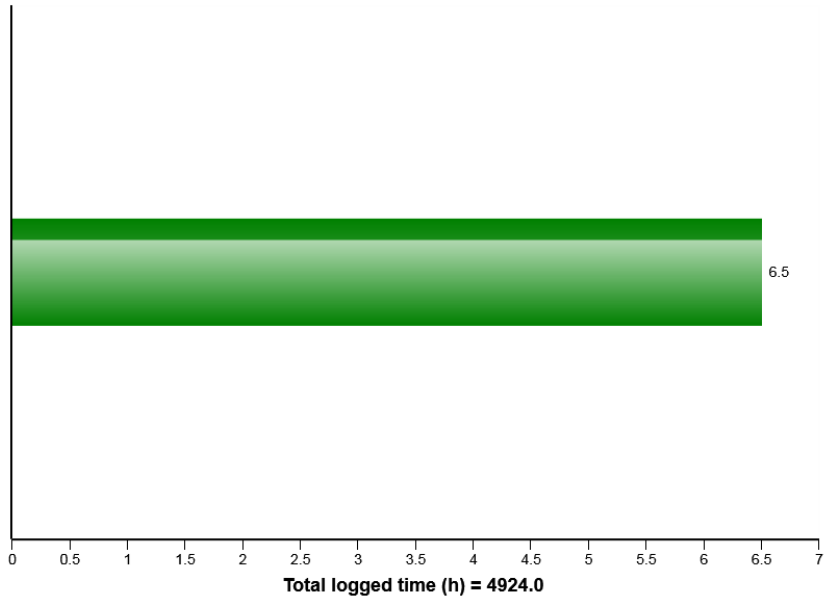


Average cycle distance

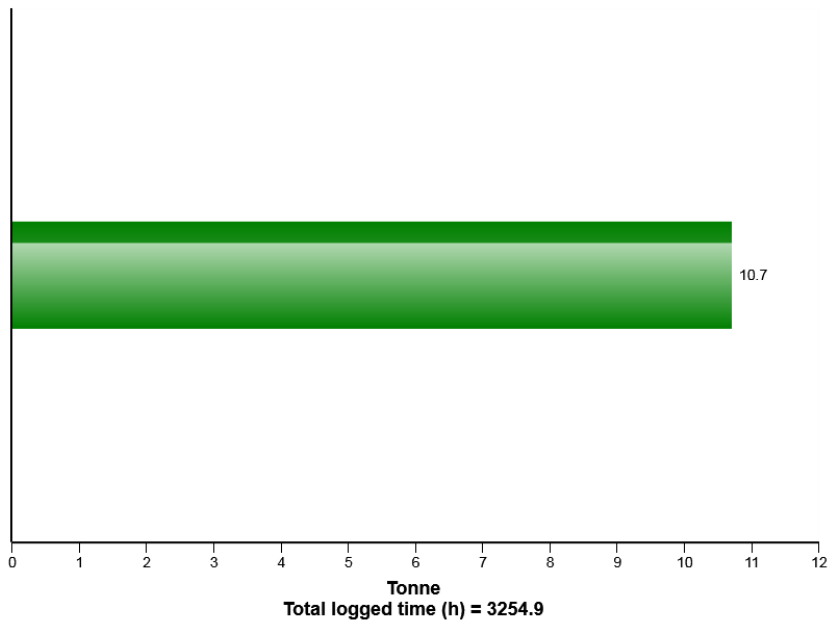


Machine model	SerialNo	Operating Hours	Reading Date
A45G	342069	4930	10/09/2019

Average number of cycles per hour

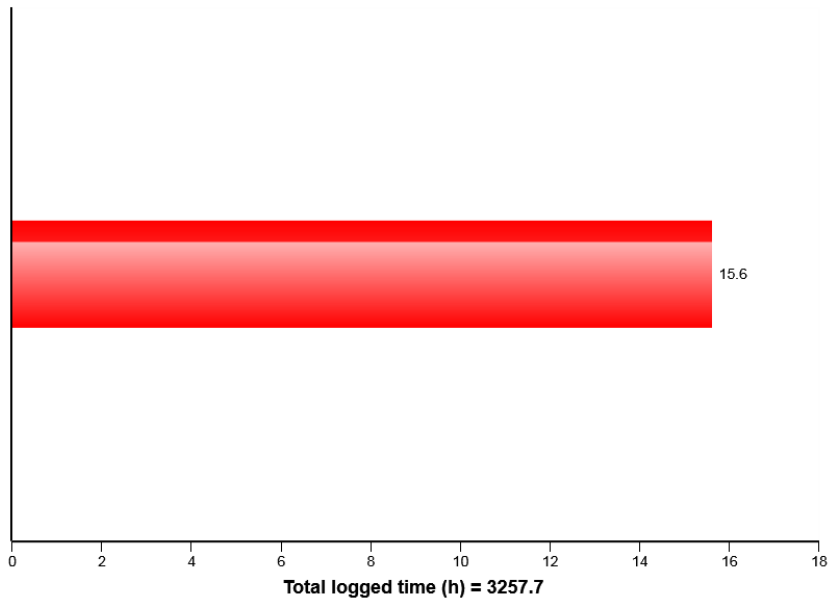


Average carry back per cycle

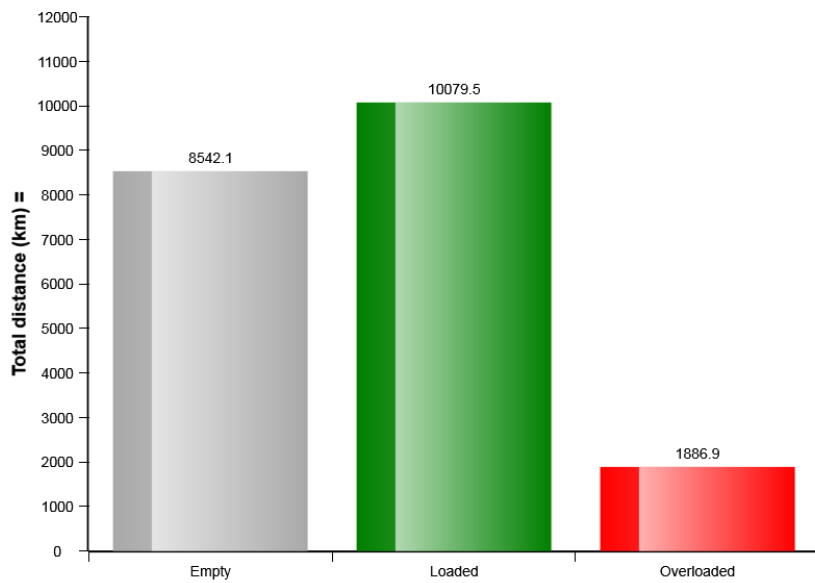


Machine model	SerialNo	Operating Hours	Reading Date
A45G	342069	4930	10/09/2019

Overloaded cycles (%)

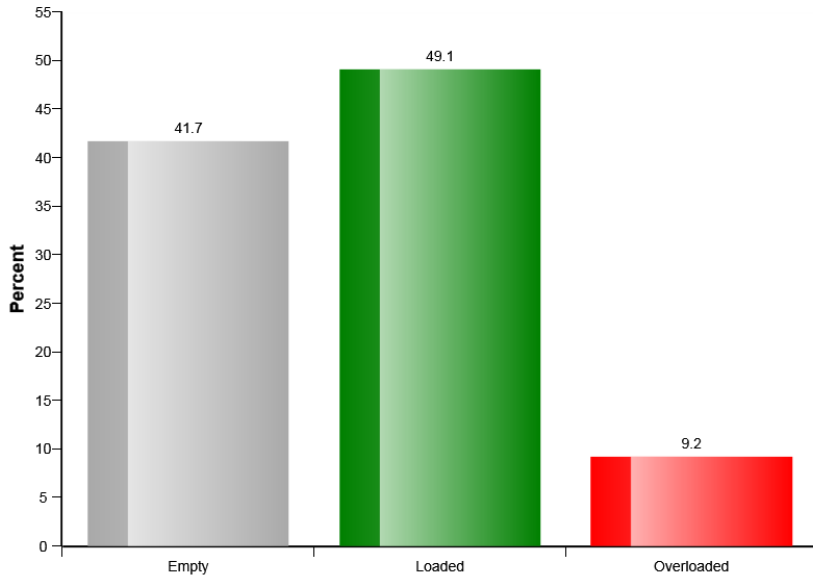


Distribution distance empty vs loaded vs overloaded (km)

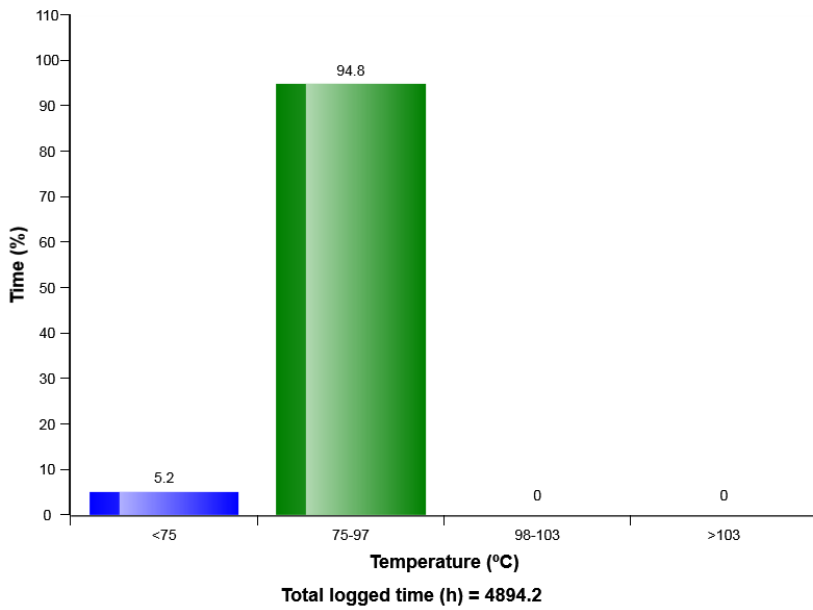


Machine model	SerialNo	Operating Hours	Reading Date
A45G	342069	4930	10/09/2019

Distribution distance empty vs loaded vs overloaded (%)

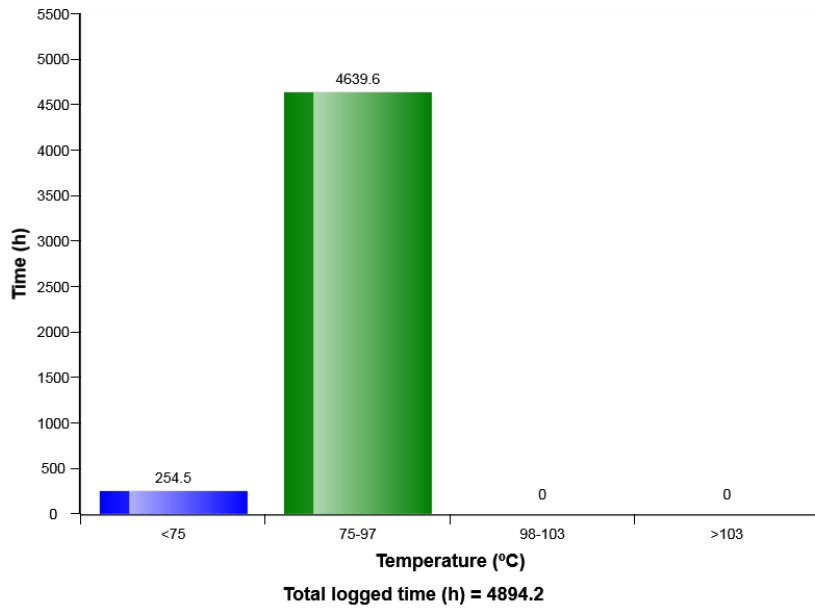


Engine coolant temperature, distribution (%)

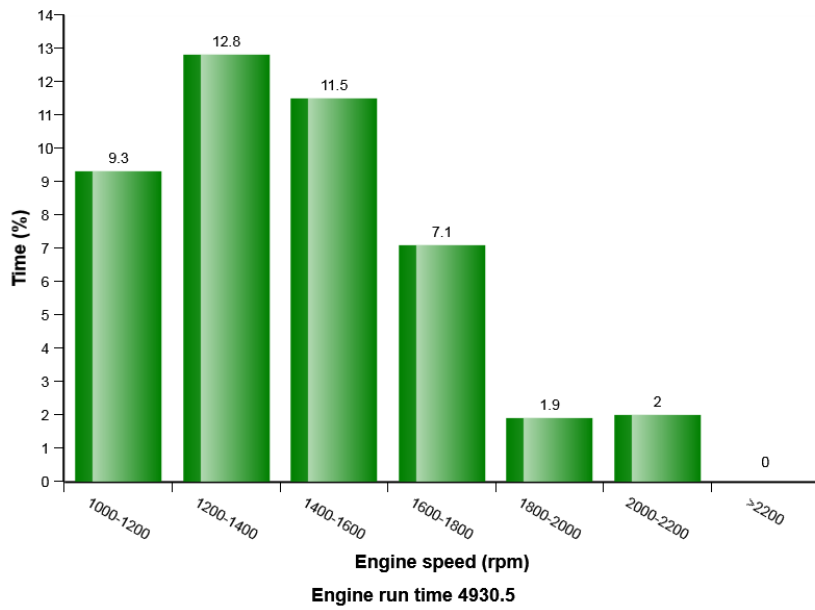


Machine model	SerialNo	Operating Hours	Reading Date
A45G	342069	4930	10/09/2019

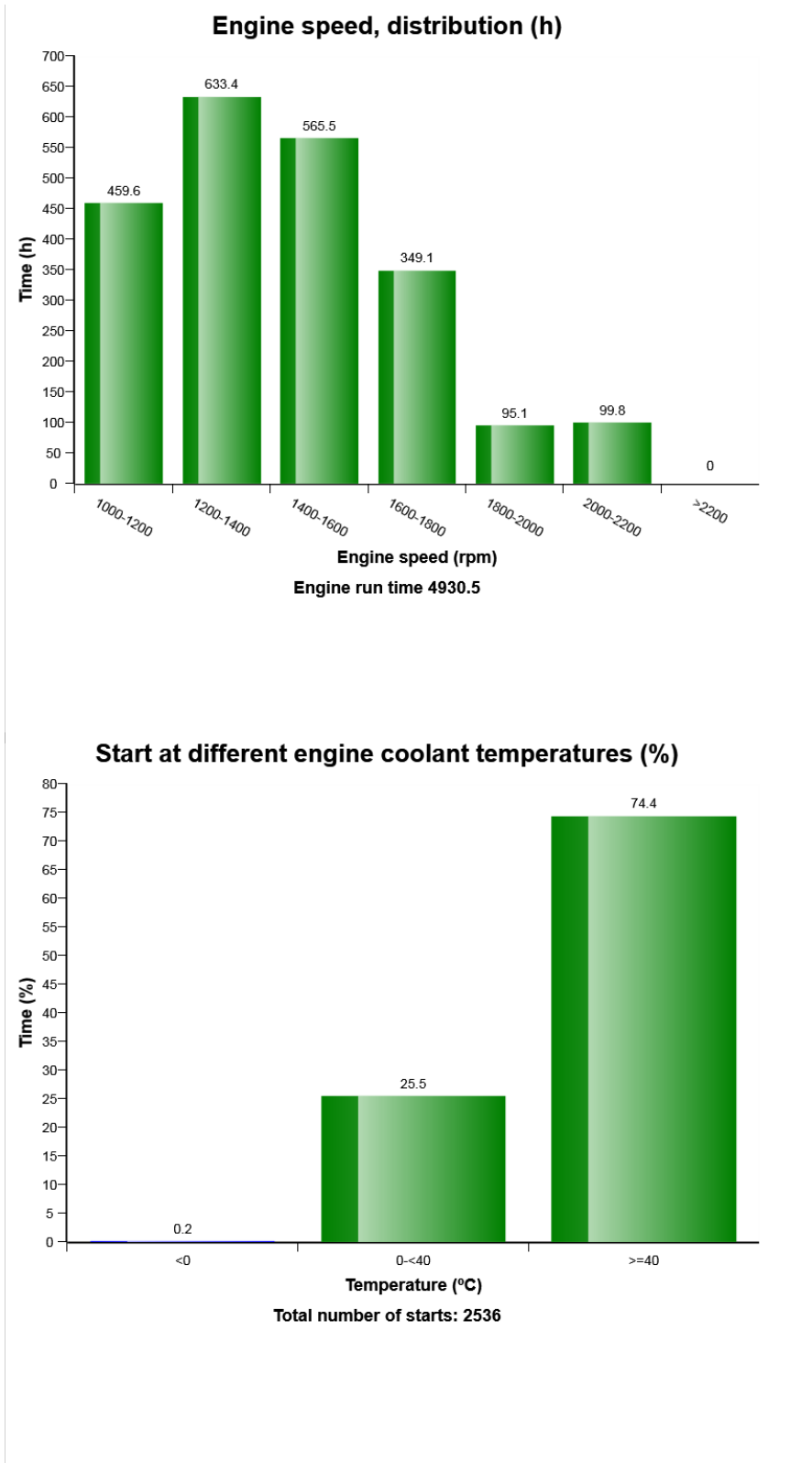
Engine coolant temperature, distribution (h)



Engine speed, distribution (%)

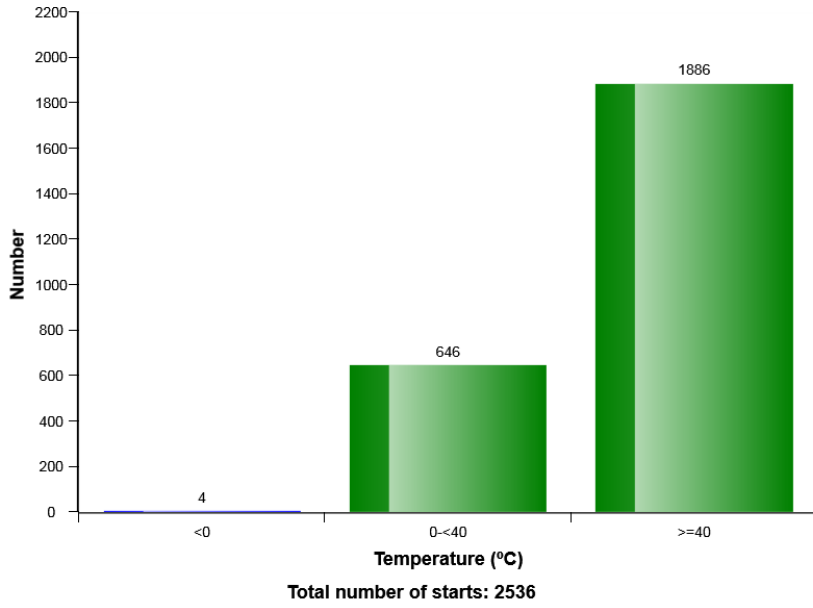


Machine model	SerialNo	Operating Hours	Reading Date
A45G	342069	4930	10/09/2019

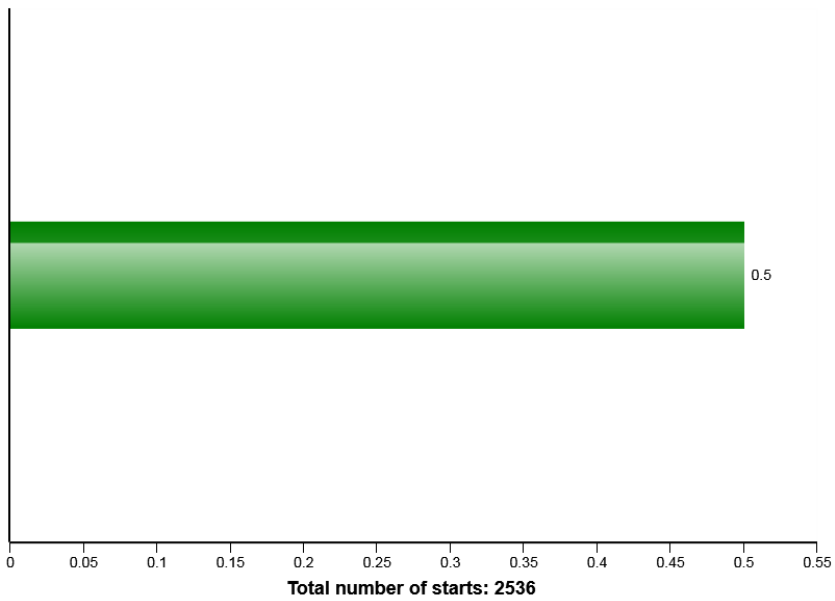


Machine model	SerialNo	Operating Hours	Reading Date
A45G	342069	4930	10/09/2019

Start at different engine coolant temperatures



Average number of starts per hour



Machine model	SerialNo	Operating Hours	Reading Date
A45G	342069	4930	10/09/2019

Regeneration aborted
Total number of occurrences = 21

Op hours	Year	Month	Day	Hour	Minute	Reason
2082	2017	12	15	16	50	1
2220	2018	1	8	16	21	2
2393	2018	2	2	11	4	1
2468	2018	2	13	13	29	1
2550	2018	2	27	12	9	1
3281	2018	6	12	16	31	1
3611	2018	7	30	11	21	1
3856	2018	9	17	10	6	2
3966	2018	10	4	9	38	2
4051	2018	10	18	8	44	2
4147	2018	11	5	10	29	2
4231	2018	11	26	15	11	2
4306	2018	12	6	11	20	2
4385	2018	12	26	8	12	2
4460	2019	1	11	11	5	2
4538	2019	1	23	8	50	2
4612	2019	2	5	11	5	2
4701	2019	2	19	8	42	2
4781	2019	3	6	9	8	2
4840	2019	3	14	16	24	2



Machine model	SerialNo	Operating Hours	Reading Date
A45G	342069	4930	10/09/2019

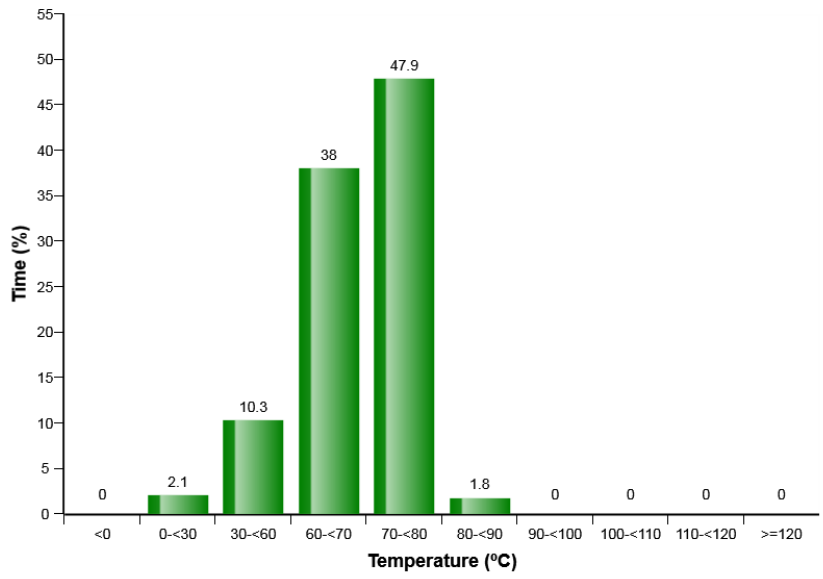
Regeneration duration
Total number of occurrences = 59

Op hours	Year	Month	Day	Hour	Minute	Duration (min)
3641	2018	8	6	15	6	47
3647	2018	8	8	8	47	46
3668	2018	8	13	9	32	32
3755	2018	8	30	11	28	27
3755	2018	8	30	12	36	1
3755	2018	8	30	13	42	29
3855	2018	9	17	9	18	48
3965	2018	10	4	8	48	50
4050	2018	10	18	7	58	47
4146	2018	11	5	9	42	48
4230	2018	11	26	14	25	46
4305	2018	12	6	10	34	47
4385	2018	12	26	7	26	47
4459	2019	1	11	10	15	49
4538	2019	1	23	8	5	45
4611	2019	2	5	10	19	46
4700	2019	2	19	7	55	47
4780	2019	3	6	8	22	46
4839	2019	3	14	15	34	49
4879	2019	3	25	11	55	49

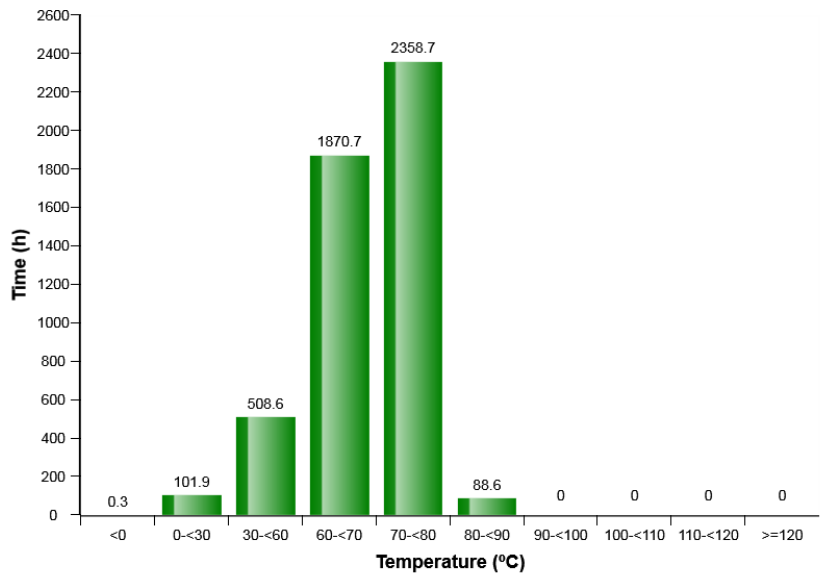


Machine model	SerialNo	Operating Hours	Reading Date
A45G	342069	4930	10/09/2019

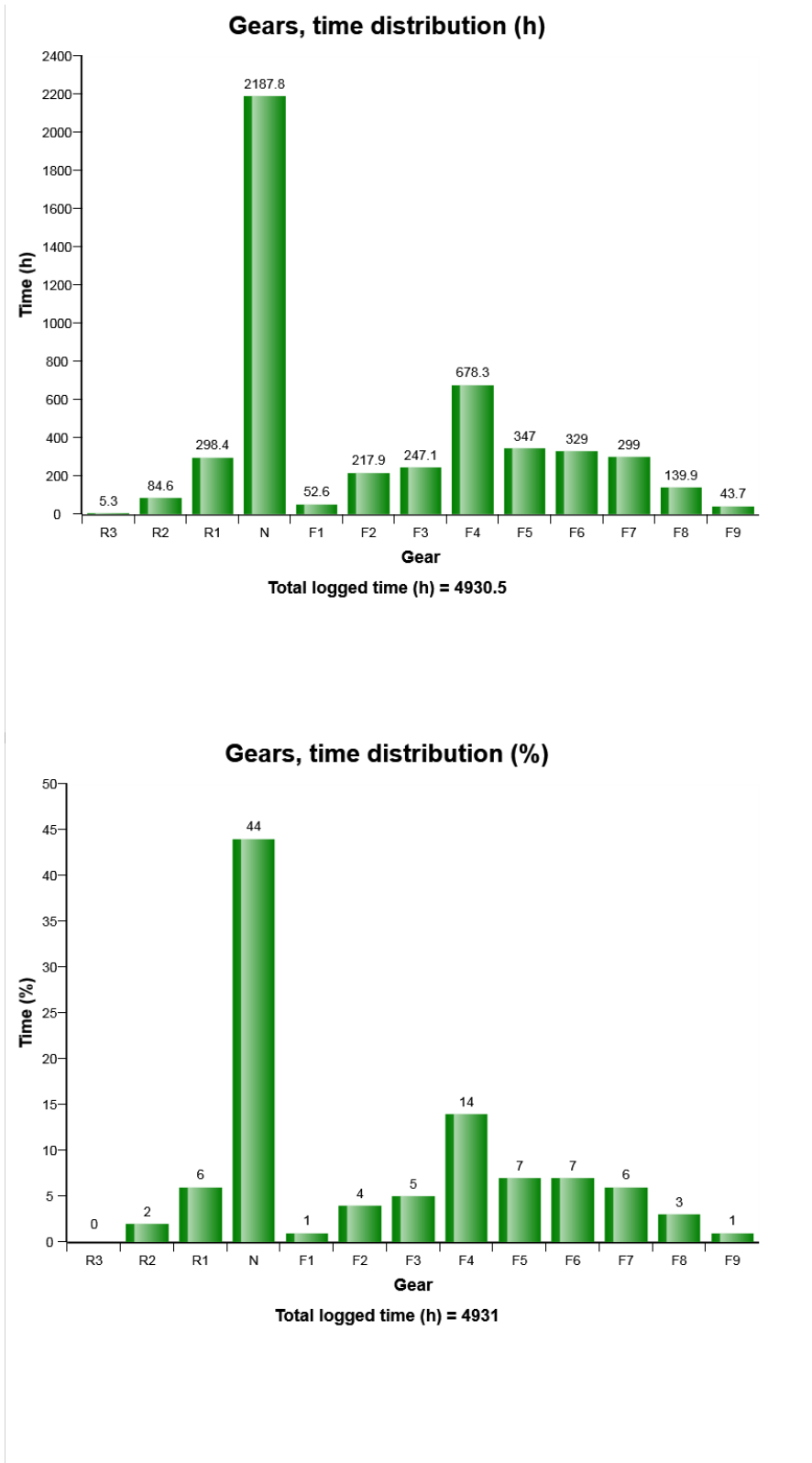
Transmission oil, temperature distribution (%)



Transmission oil, temperature distribution (h)

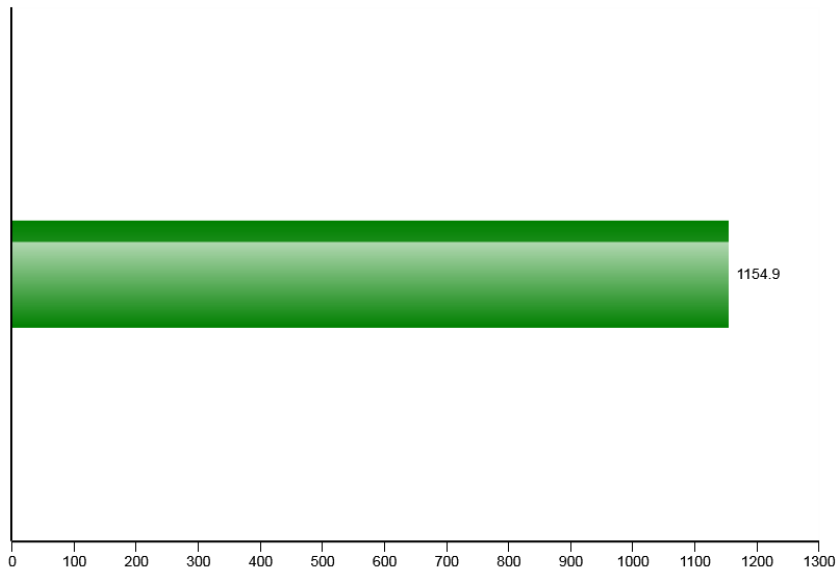


Machine model	SerialNo	Operating Hours	Reading Date
A45G	342069	4930	10/09/2019

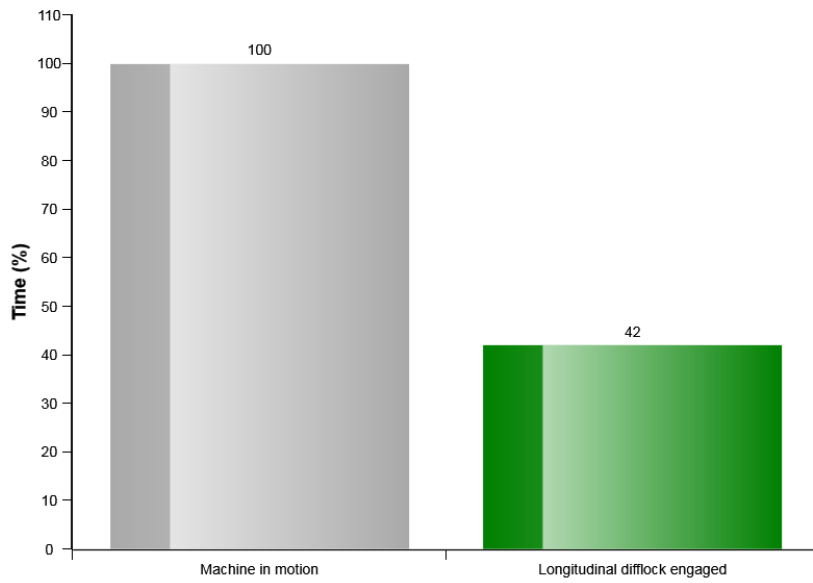


Machine model	SerialNo	Operating Hours	Reading Date
A45G	342069	4930	10/09/2019

Longitudinal difflock engaged (h)



Longitudinal difflock use related to machine in motion (%)



Machine model	SerialNo	Operating Hours	Reading Date
A45G	342069	4930	10/09/2019

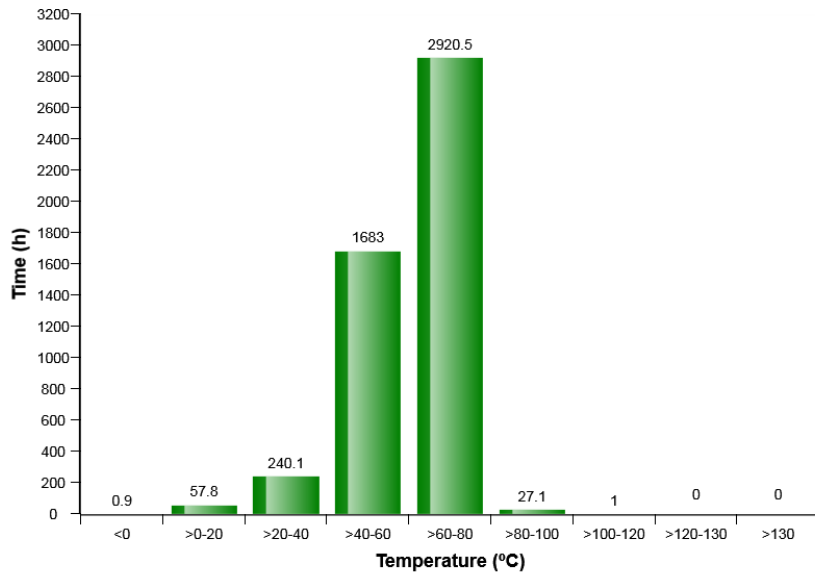
**Transmission oil pressure low
Total number of occurrences = 30**

Op hours	Year	Month	Day	Hour	Minute	Duration (sec)	Extreme (bar)
971	2017	8	7	16	54	0	67.4
971	2017	8	7	16	47	0	69.2
971	2017	8	7	16	43	0	58.2
971	2017	8	7	16	39	120	53.5
971	2017	8	7	16	36	0	80.6
971	2017	8	7	16	33	0	85.3
971	2017	8	7	16	28	0	61.5
971	2017	8	7	16	26	0	49.1
971	2017	8	7	16	16	0	120.1
971	2017	8	7	16	51	70	64.1
971	2017	8	7	16	49	0	78.8
972	2017	8	7	17	34	0	76.6
972	2017	8	7	17	29	220	26.7
972	2017	8	7	17	25	0	69.2
972	2017	8	7	17	22	30	45.1
972	2017	8	7	17	21	0	59.0
972	2017	8	7	17	20	30	35.9
972	2017	8	7	17	16	0	55.3
2118	2017	12	18	8	55	10	24.2
4025	2018	10	9	10	40	0	100.0

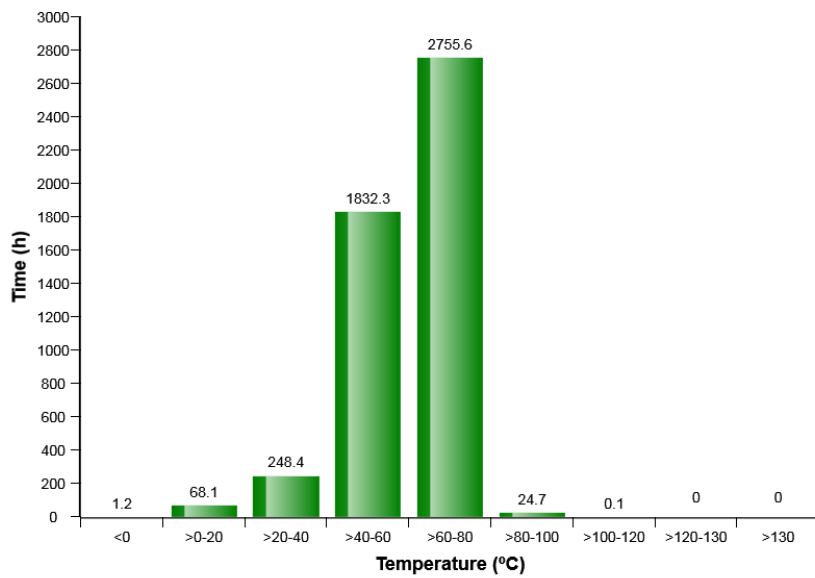


Machine model	SerialNo	Operating Hours	Reading Date
A45G	342069	4930	10/09/2019

Service brake cooling oil, front axle temperature

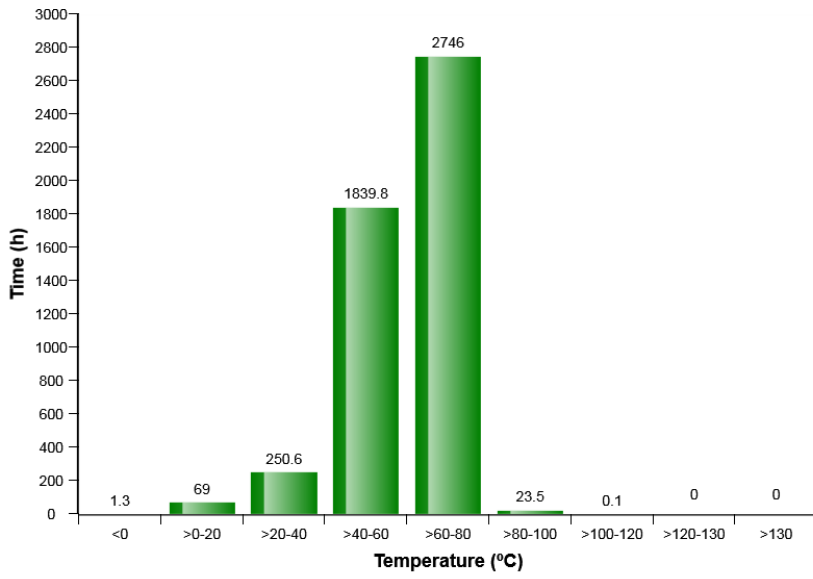


Service brake cooling oil, first bogie axle temperature

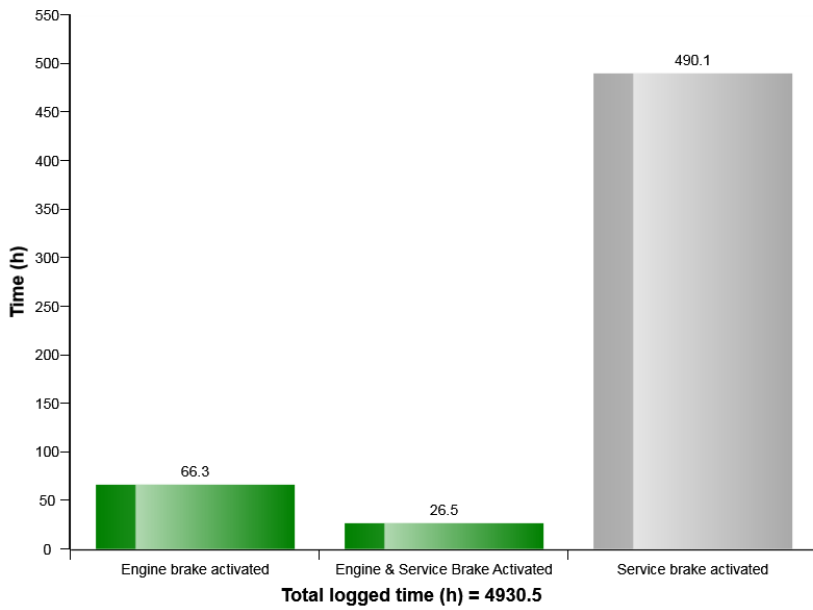


Machine model	SerialNo	Operating Hours	Reading Date
A45G	342069	4930	10/09/2019

Service brake cooling oil, second bogie axle temperature



Brake Usage (h)



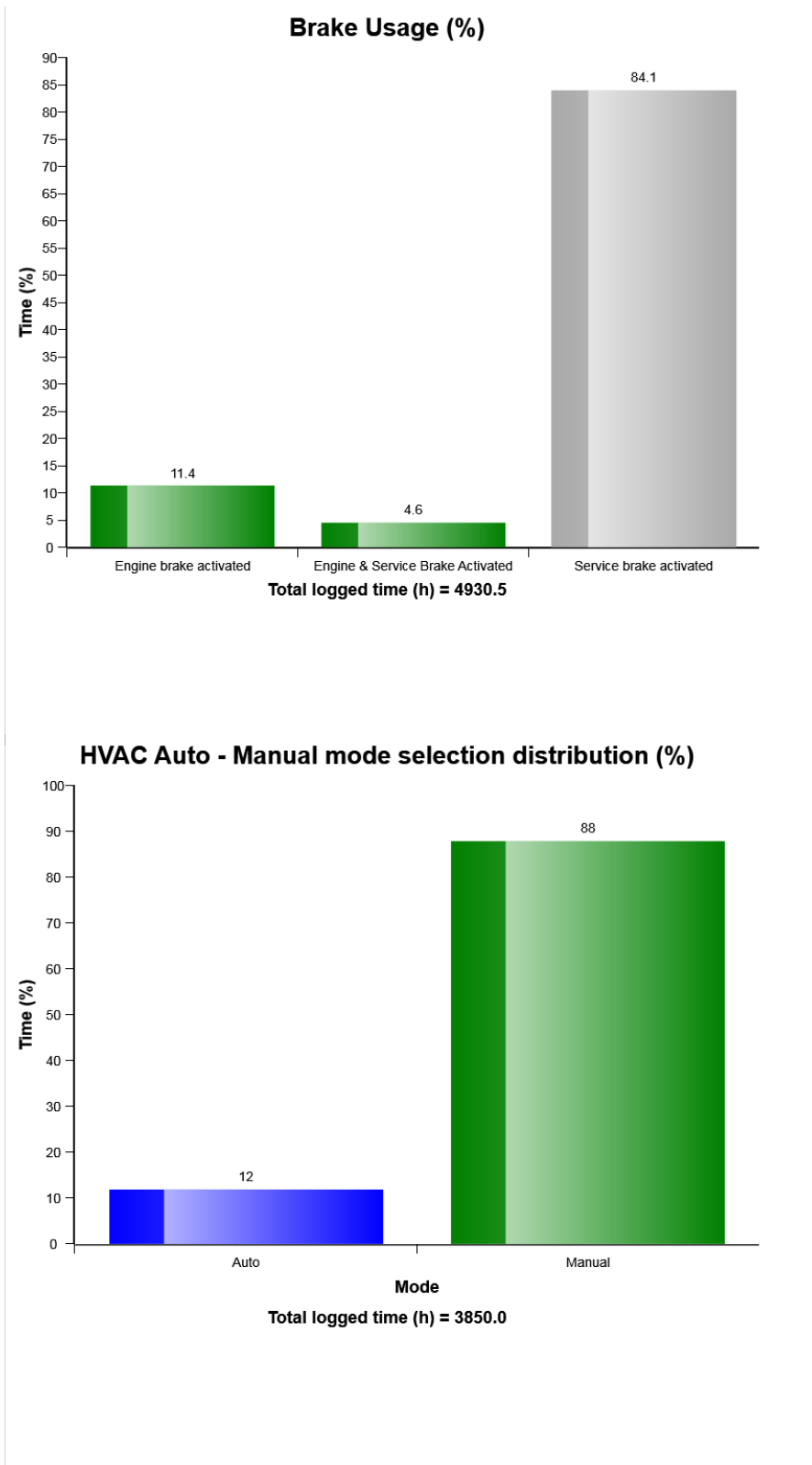
Machine model	SerialNo	Operating Hours	Reading Date
A45G	342069	4930	10/09/2019

Low Brake Servo Pressure
Total number of occurrences = 13

	Op hours	Year	Month	Day	Hour	Minute	Duration (sec)	Extreme (bar)
D	906	2017	8	1	6	34	0	151
E	2630	2018	3	9	10	29	0	127
F	2923	2018	4	18	18	14	0	143
G	3219	2018	6	1	6	32	9	31
H	3590	2018	7	20	9	22	0	141
I	3652	2018	8	5	6	38	10	106
J	3782	2018	8	30	13	38	0	144
A	4010	2018	10	6	9	53	10	126
B	4874	2019	3	16	8	18	0	138
C	4929	2019	8	31	5	59	9	114

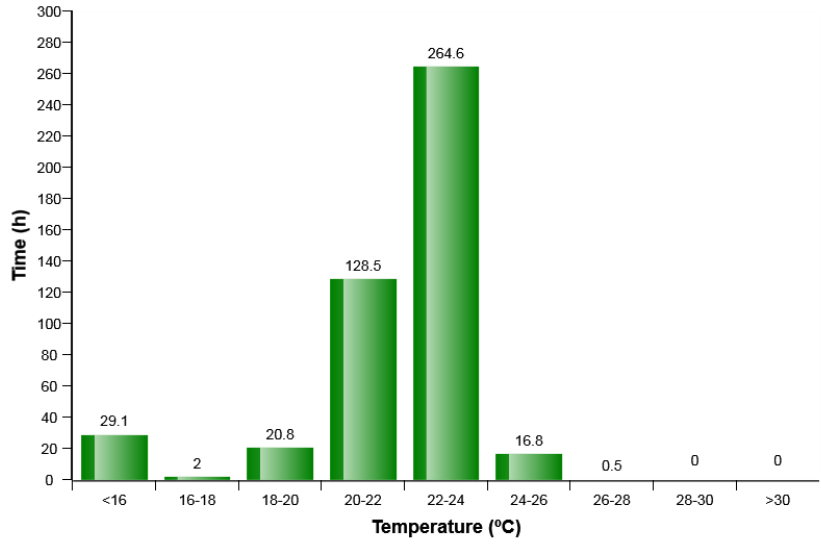


Machine model	SerialNo	Operating Hours	Reading Date
A45G	342069	4930	10/09/2019

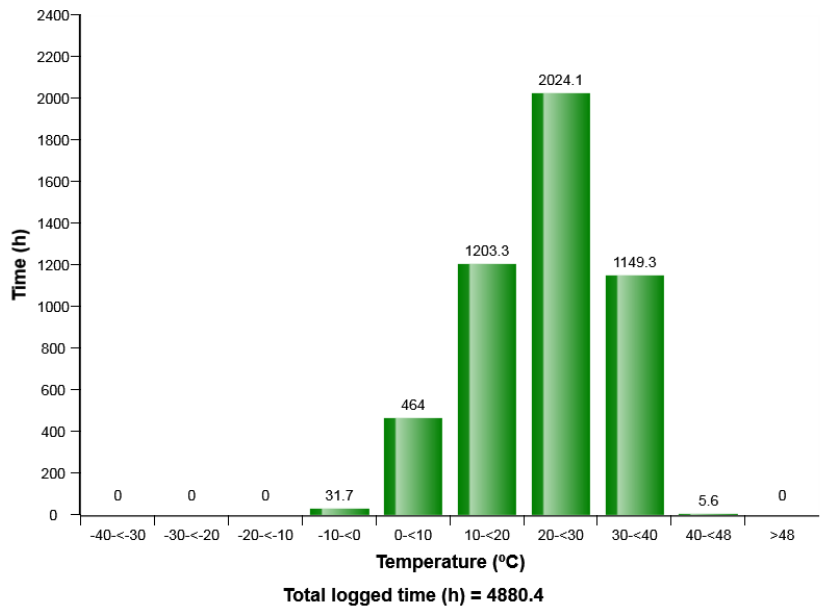


Machine model	SerialNo	Operating Hours	Reading Date
A45G	342069	4930	10/09/2019

HVAC air temperature setting in auto control mode distribution (h)

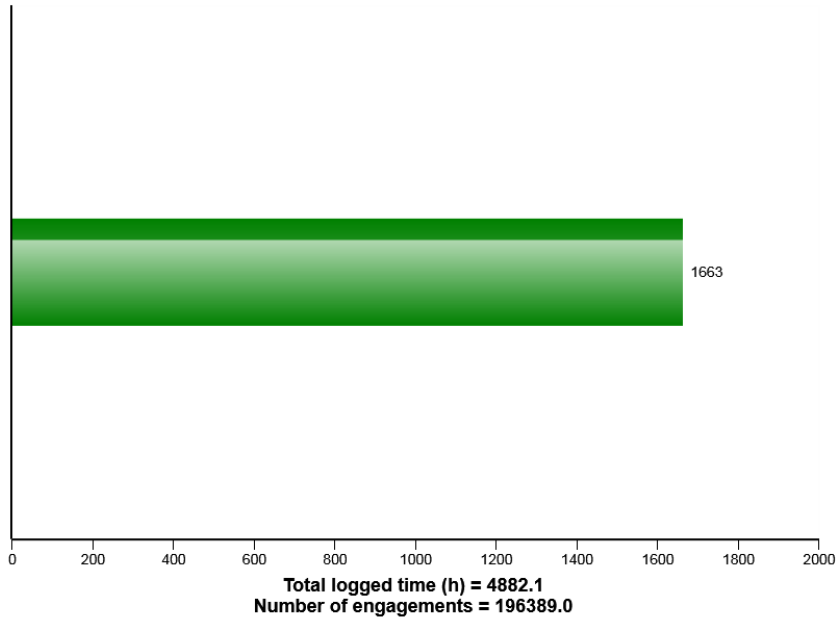


Machine ambient temperature distribution (h)

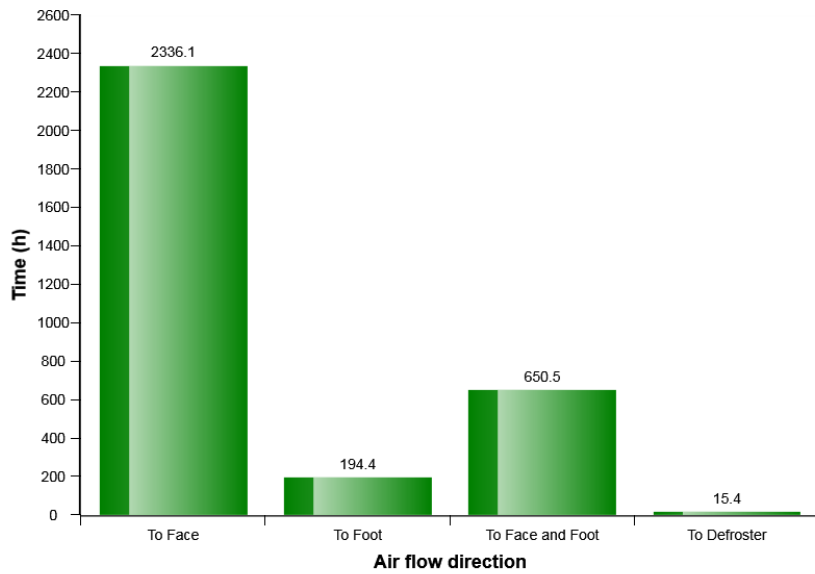


Machine model	SerialNo	Operating Hours	Reading Date
A45G	342069	4930	10/09/2019

AC Compressor usage



HVAC air flow direction in manual mode distribution (h)



Machine model	SerialNo	Operating Hours	Reading Date
A45G	342069	4930	10/09/2019

AC High Pressure
Total number of occurrences = 172

Op hours	Year	Month	Day	Hour	Minute	Duration (sec)	Extreme (° C)
3667	2018	8	6	15	39	47	37
3668	2018	8	6	15	44	374	37
3685	2018	8	9	14	53	53	35
3686	2018	8	9	15	55	7	33
3696	2018	8	13	15	43	525	36
3697	2018	8	13	16	35	44	35
3697	2018	8	13	16	11	42	35
3697	2018	8	13	16	31	88	35
3769	2018	8	28	16	19	35	35
3859	2018	9	12	14	34	26	36
3859	2018	9	12	14	6	23	36
3876	2018	9	14	13	51	13	36
3876	2018	9	14	13	31	28	36
3878	2018	9	14	15	44	10	37
3905	2018	9	19	14	54	9	38
3906	2018	9	19	15	46	6	39
3906	2018	9	19	15	55	18	40
3914	2018	9	20	14	28	14	37
3915	2018	9	20	15	16	13	38
3915	2018	9	20	15	33	26	37



Machine model	SerialNo	Operating Hours	Reading Date
A45G	342069	4930	10/09/2019

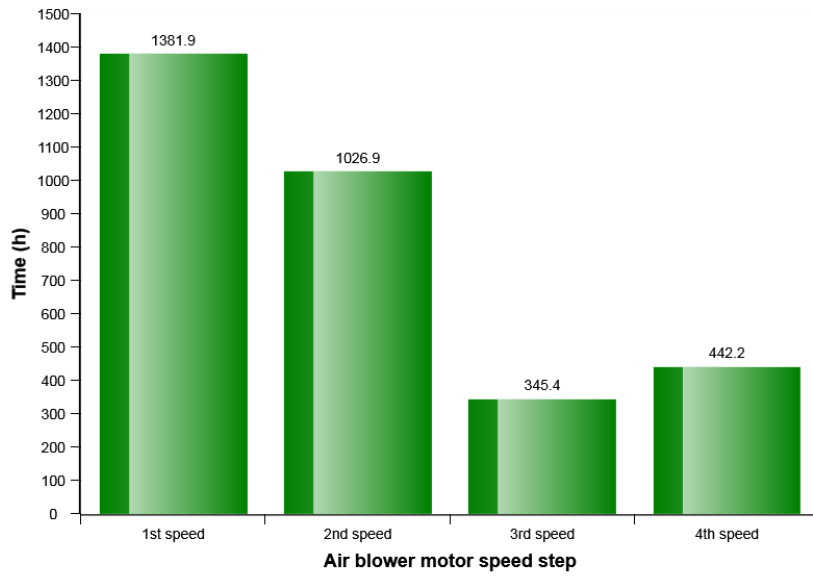
AC System Cut Out Pressure
Total number of occurrences = 4

Op hours	Year	Month	Day	Hour	Minute	Duration (sec)	Extreme (° C)
0	2000	11	3	17	14	1199	-9
0	2000	0	0	0	0	0	0
0	2000	0	0	0	0	0	0
0	2000	0	0	0	0	0	0
0	2000	0	0	0	0	0	0
0	2000	0	0	0	0	0	0
0	2000	0	0	0	0	0	0
0	2000	0	0	0	0	0	0
0	2000	0	0	0	0	0	0
0	2000	0	0	0	0	0	0
0	2000	0	0	0	0	0	0
0	2000	0	0	0	0	0	0
0	2000	0	0	0	0	0	0
0	2000	0	0	0	0	0	0
0	2000	0	0	0	0	0	0
0	2000	0	0	0	0	0	0
0	2000	0	0	0	0	0	0
0	2000	0	0	0	0	0	0
0	2000	0	0	0	0	0	0
2182	2001	10	19	17	5	763	-10
2183	2001	10	19	18	41	211	-11
2211	2001	10	22	17	40	104	-7

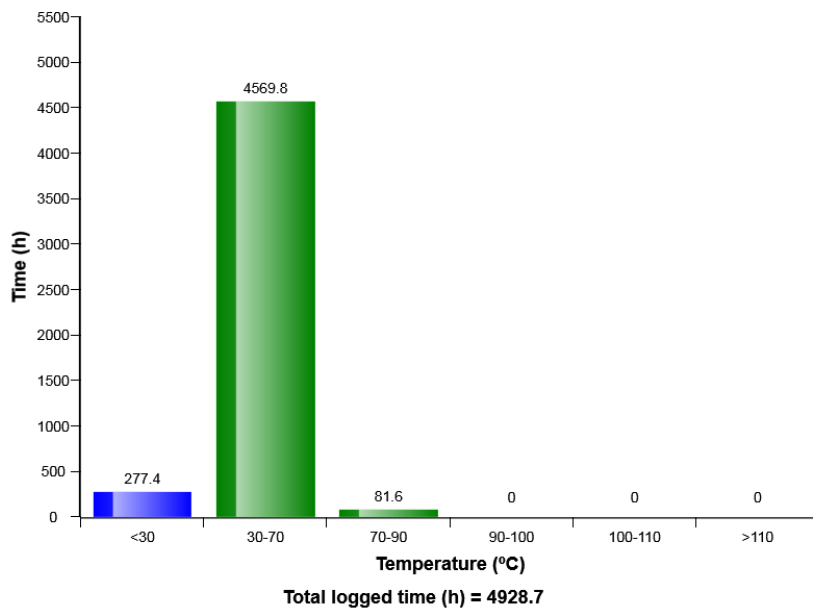


Machine model	SerialNo	Operating Hours	Reading Date
A45G	342069	4930	10/09/2019

HVAC air blower motor speed in manual mode distribution (h)



Hydraulic oil, temperature distribution (h)



Machine model	SerialNo	Operating Hours	Reading Date
A45G	342069	4930	10/09/2019

